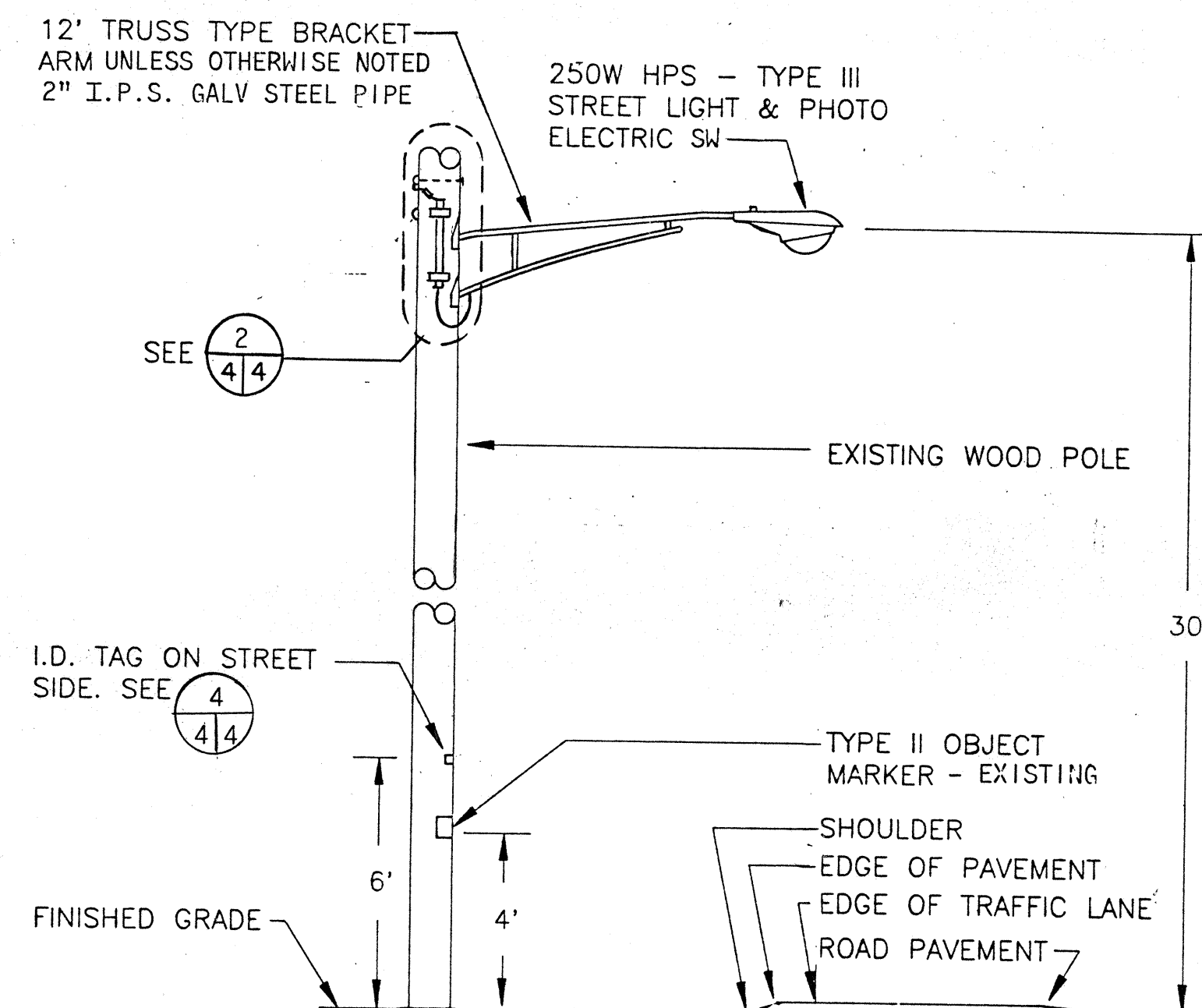
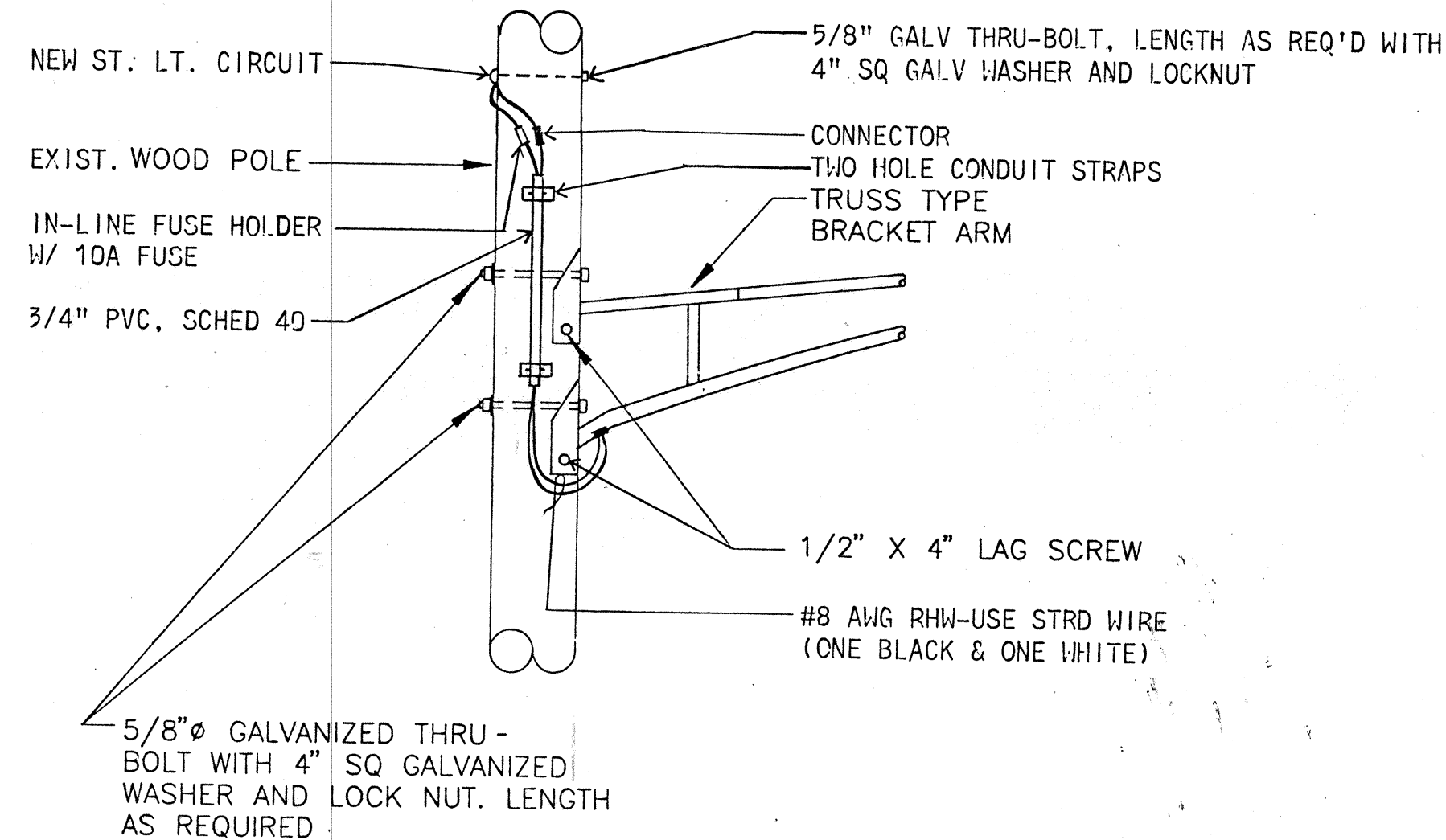


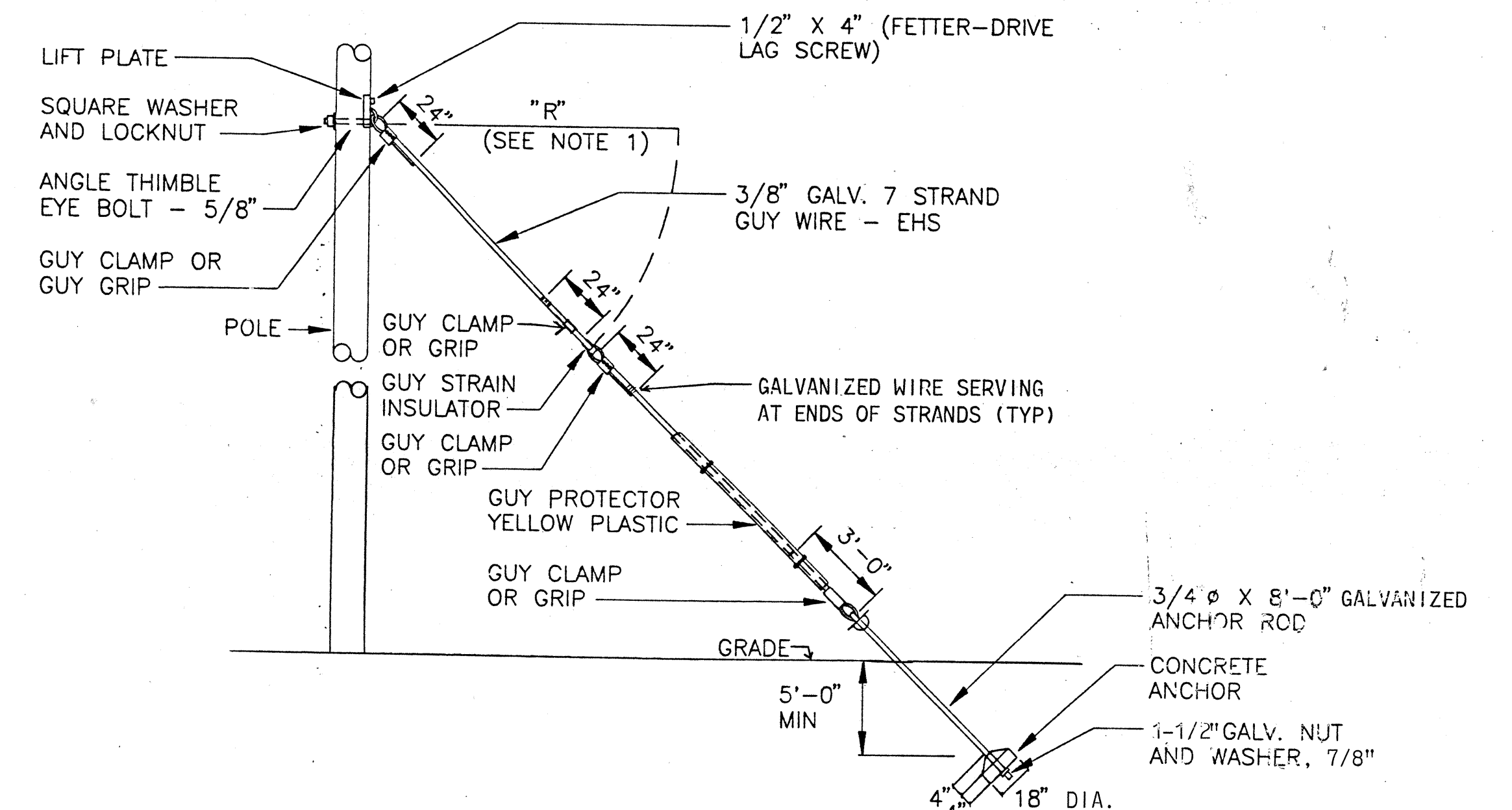
FED. ROAD DIST. NO.	STATE	FED. AID PROJ. NO.	FISCAL YEAR	SHEET NO.	TOTAL SHEETS
HAWAII	HAW.	NH-061-1(29)	1996	4	5



1 JP DETAIL  
2/4 NTS

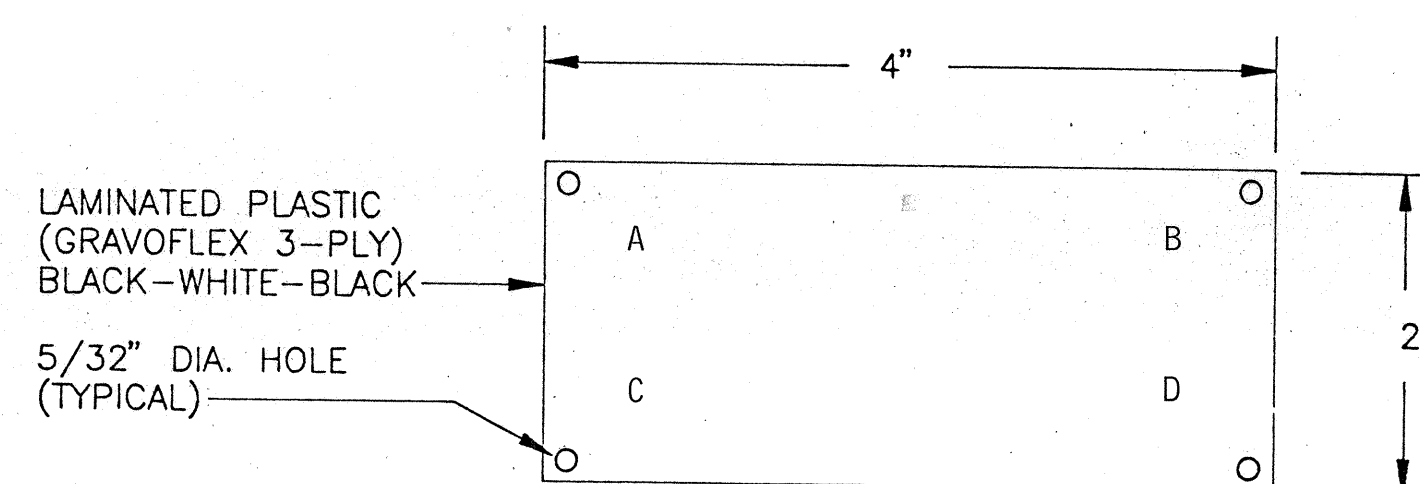


2 DETAIL  
4/4 NTS



3 DETAIL  
2,3 5/4 NTS

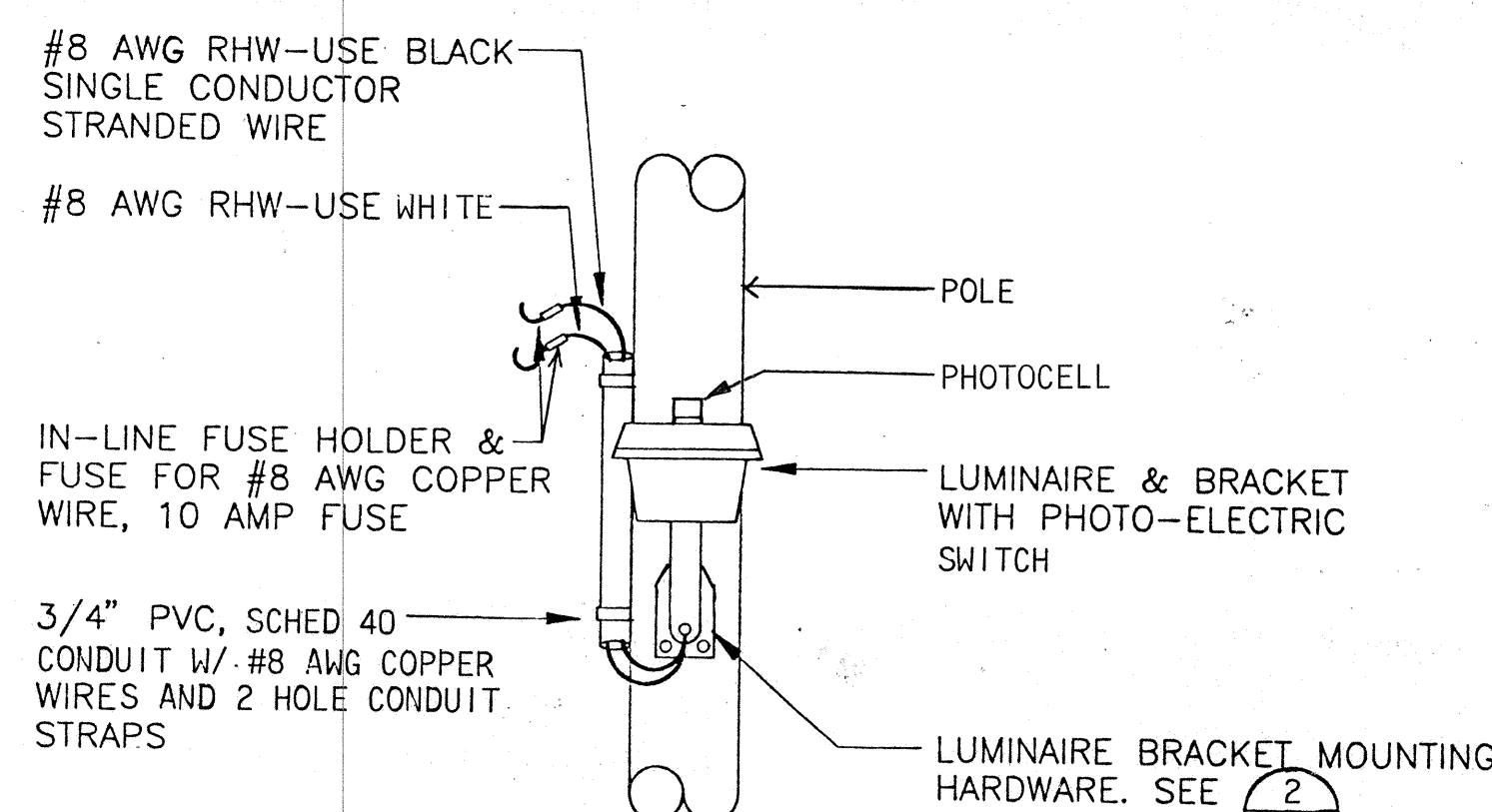
NOTE: 1. RADIUS "R" TO BE LENGTH REQUIRED TO LOCATE GUY INSULATOR 4 FEET BELOW TELEPHONE LINE LEVEL MIN. "R" = 6 FT



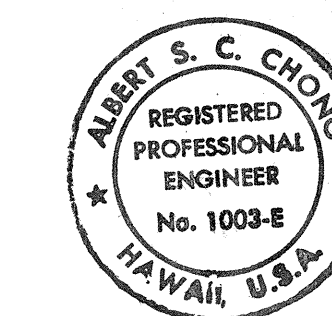
A=CONTRACT NO. (OBTAIN FROM STATE OR HECO)  
B=LT. NO. FROM STATE  
C=N250 (250W HPS)  
D=III (IES TYPE DISTRIBUTION)

1. ATTACH TAG TO POLE WITH 4 CADMIUM PLATED SCREWS AT 6' ABOVE GRADE
2. LETTERS TO BE NO.5 REDUCTION, 1/5" ENGRAVED OR STENCILED

4 DETAIL  
4/4 NTS



5 DETAIL  
5/4 NTS



THIS WORK WAS PREPARED BY ME  
OR UNDER MY SUPERVISION  
*Albert S. C. Chong*

STATE OF HAWAII  
DEPARTMENT OF TRANSPORTATION  
HIGHWAYS DIVISION

MISCELLANEOUS DETAILS

HIGHWAY LIGHTING IMPROVEMENTS AND REHABILITATION  
KAILUA ROAD  
KALANIANA'OLE HIGHWAY TO KAWANUI BRIDGE

SHEET No. 4 OF 5 SHEETS