

GENERAL NOTES FOR TRAFFIC CONTROL PLAN

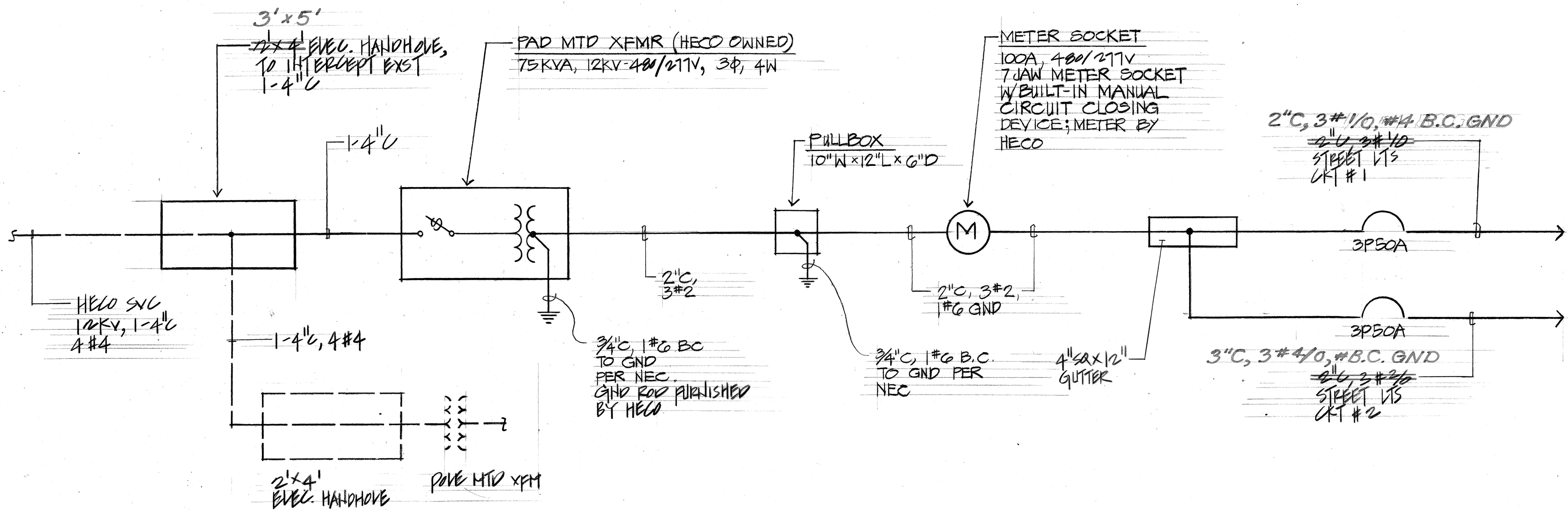
1. THE CONTRACTOR SHALL OBTAIN PERMITS FROM THE STATE HIGHWAYS DIVISION, OAHU DISTRICT OFFICE 5 DAYS PRIOR TO COMMENCING WORK.
2. ALL PROTECTIVE FACILITIES AND PRECAUTIONS TO BE TAKEN SHALL CONFORM WITH THE "HAWAII ADMINISTRATION RULES GOVERNING THE USE OF TRAFFIC CONTROL DEVICES AT WORK SITES ON OR ADJACENT TO PUBLIC STREETS AND HIGHWAYS" ADOPTED BY THE DIRECTOR OF TRANSPORTATION AND CURRENT U.S. FEDERAL HIGHWAY ADMINISTRATION'S "MANUAL ON UNIFORM TRAFFIC CONTROL DEVICES FOR STREETS AND HIGHWAYS, PART VI, TRAFFIC CONTROLS FOR STREET AND HIGHWAY CONSTRUCTION AND MAINTENANCE OPERATIONS."
3. THE CONTRACTOR SHALL NOT WORK ON WEEKENDS OR HOLIDAYS, UNLESS SPECIFICALLY AUTHORIZED BY THE ENGINEER IN WRITING.
4. THE CONTRACTOR SHALL CHECK & MAINTAIN THE TRAFFIC CONTROL DEVICES PERIODICALLY DURING WORKING HOURS AT NO ADDITIONAL COST TO THE STATE.
5. TRAFFIC CONES SHALL BE 18 INCHES (MINIMUM) HIGH.
6. ALL TRAFFIC CONTROL SIGNS AND DEVICES INCLUDING BARRICADES, ARROW BOARDS, TRAFFIC CONES AND OTHER APPROPRIATE TRAFFIC CONTROL APPURTENANCES SHALL BE VERIFIED AND APPROVED BY THE ENGINEER PRIOR TO THE ISSUANCES OF THE PUBLIC NOTICE FOR THE LIGHTING WORK AND DETOUR.
7. THE PERMITTEE SHALL MAKE MINOR ADJUSTMENTS AT INTERSECTIONS, DRIVEWAYS, BRIDGES, STRUCTURES, ETC., TO FIT FIELD CONDITIONS.
8. TRAFFIC CONTROL DEVICES SHALL BE INSTALLED SUCH THAT THE SIGN OR DEVICES FARTHEST FROM THE WORK AREA SHALL BE PLACED FIRST. THE OTHERS SHALL THEN BE PLACED PROGRESSIVELY TOWARD THE WORK AREA.
9. FLAGGERS AND/OR POLICE OFFICERS SHALL BE IN SIGHT OF EACH OTHER OR IN DIRECT COMMUNICATION AT ALL TIMES.
10. ALL TRAFFIC LANES SHALL BE A MINIMUM OF 10 FEET WIDE.
11. ALL CONSTRUCTION WARNING SIGNS SHALL BE PROMPTLY REMOVED OR COVERED WHENEVER THE MESSAGE IS NOT APPLICABLE OR NOT IN USE.
12. THE BACK OF ALL SIGNS USED FOR TRAFFIC CONTROL SHALL BE APPROPRIATELY COVERED TO PRECLUDE THE DISPLAY OF INAPPLICABLE SIGN MESSAGES (I.E., WHEN SIGNS HAVE MESSAGES ON BOTH FACES).
13. AT THE END OF EACH DAY'S WORK OR AS SOON AS THE WORK IS COMPLETED, THE PERMITTEE SHALL REMOVE ALL TRAFFIC CONTROL DEVICES NO LONGER NEEDED TO PERMIT FREE AND SAFE PASSAGE OF PUBLIC TRAFFIC. REMOVAL SHALL BE IN THE REVERSE ORDER OF INSTALLATION.

CONSTRUCTION NOTES: STATE RIGHT-OF-WAY

1. THE CONTRACTOR SHALL OBTAIN A CONSTRUCTION PERMIT FROM THE STATE'S HIGHWAY DISTRICT ENGINEER AT 727 KAKOI STREET PRIOR TO THE COMMENCEMENT OF WORK WITHIN STATE HIGHWAY RIGHT-OF-WAY.
2. CONSTRUCTION AND RESTORATION OF ALL EXISTING HIGHWAY FACILITIES WITHIN STATE RIGHT-OF-WAY SHALL BE DONE IN ACCORDANCE WITH ALL APPLICABLE SECTIONS OF THE "STANDARD SPECIFICATIONS FOR ROAD AND BRIDGE CONSTRUCTION," DATED 1985, AND THE "SPECIFICATIONS FOR INSTALLATION OF MISCELLANEOUS IMPROVEMENTS WITHIN STATE HIGHWAYS," DATED MAY, 1984 OF THE STATE HIGHWAYS DIVISION.
3. THE CONTRACTOR SHALL PROVIDE, INSTALL, AND MAINTAIN ALL NECESSARY SIGNS, LIGHTS, FLARES, BARRICADES, MARKERS, CONES, AND OTHER PROTECTIVE FACILITIES AND SHALL TAKE ALL NECESSARY PRECAUTIONS FOR PROTECTION AND FOR THE CONVENIENCE AND SAFETY OF PUBLIC TRAFFIC. ALL SUCH PROTECTIVE FACILITIES AND PRECAUTIONS TO BE TAKEN SHALL CONFORM WITH THE "ADMINISTRATIVE RULES OF HAWAII GOVERNING THE USE OF TRAFFIC CONTROL DEVICES AT WORK SITES ON OR ADJACENT TO PUBLIC STREET AND HIGHWAYS" ADOPTED BY THE HIGHWAY SAFETY COORDINATOR, AND THE U.S. FEDERAL HIGHWAY ADMINISTRATION'S "MANUAL ON UNIFORM TRAFFIC CONTROL DEVICES FOR STREETS AND HIGHWAYS, PART VI - TRAFFIC CONTROLS FOR HIGHWAY CONSTRUCTION AND MAINTENANCE OPERATIONS." IF LANE CLOSURES ARE REQUIRED DURING CONSTRUCTION, A TRAFFIC CONTROL PLAN SHALL BE INCORPORATED INTO THE CONSTRUCTION PLANS AND MUST BE APPROVED BY THE ENGINEER PRIOR TO THE ISSUANCE OF THE PERMIT.
4. LONGITUDINAL DRAINAGE ALONG THE HIGHWAY SHALL BE MAINTAINED.
5. ALL SIGNS, PAVEMENT MARKINGS, STRIPING, GUARDRAILS, ETC. REMOVED OR DAMAGED BY THE CONTRACTOR SHALL BE REPLACED BY THE CONTRACTOR AT NO ADDITIONAL COST TO THE STATE.
6. ALL REGULATORY, GUIDE AND CONSTRUCTION SIGNS AND BARRICADES SHALL BE OF HIGH INTENSITY REFLECTIVE SHEETING.
7. NO MATERIAL AND/OR EQUIPMENT SHALL BE STOCKPILED OR OTHERWISE STORED WITHIN HIGHWAY RIGHT-OF-WAY EXCEPT AT LOCATIONS DESIGNATED IN WRITING AND APPROVED BY THE DISTRICT ENGINEER.
8. THE CONTRACTOR SHALL BE REQUIRED TO PROVIDE ADEQUATE, SAFE BRIDGING MATERIAL OVER THE TRENCH, INCLUDING SHORING, WHEN TRENCHING IN PAVEMENT AREAS TO HANDLE ALL TYPES OF VEHICULAR TRAFFIC.
9. NO TRENCH SHALL BE OPENED MORE THAN 50 FEET IN ADVANCE OF THE INSTALLED AND TESTED DUCT LINE. NO JUMPS OR SPACES WILL BE PERMITTED UNLESS APPROVED BY THE ENGINEER.

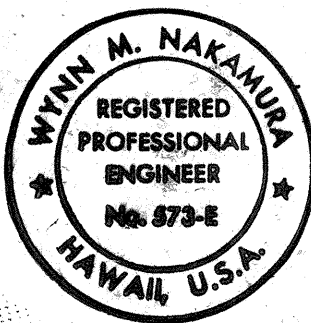
ELECTRICAL SYMBOLS

EXIST	NEW	DESCRIPTION
		HIGHWAY LIGHTING ASSEMBLY W/ 250W HPS, TWIN-HEAD, SINGLE
		PVC UNDERGROUND CONDUIT, SCHEDULE 80 OR 40 AS INDICATED
		STREET LVS POWERBOX, TRAFFIC BEARING TYPE
		PAD MTD TRANSFORMER SERVICE EQUIPMENT ENCLOSURE, DETAILS A+B/E-10
		INDICATOR
		STATION NUMBER
		CONCRETE BASE DETAIL
		POLE BASE
		LUMINAIRE ARM LENGTH
		CUT NO. & PHASE CONN.



ONE-LINE DIAGRAM

NOTE: DASHED LINES DENOTE EXIST CONDITION; SOLID LINES DENOTE NEW WORK.



THIS WORK WAS PREPARED BY ME OR UNDER MY SUPERVISION.
Wynn M. Nakamura
NAKAMURA, OYAMA & ASSOC., INC.
CONSULTING ENGINEERS

STATE OF HAWAII
DEPARTMENT OF TRANSPORTATION
HIGHWAYS DIVISION

GENERAL NOTES, CONSTRUCTION NOTES

ONE-LINE, ELECTRICAL SYMBOLS

PALI HIGHWAY ROADWAY LIGHTING

PALI TUNNEL TO WAKANAKA ST.

PROJECT NO. NH-001-1(20)

SCALE: NONE DATE: MAY 13, 1991

SHEET NO. E.1 OF 19 SHEETS

"AS-BUILT"