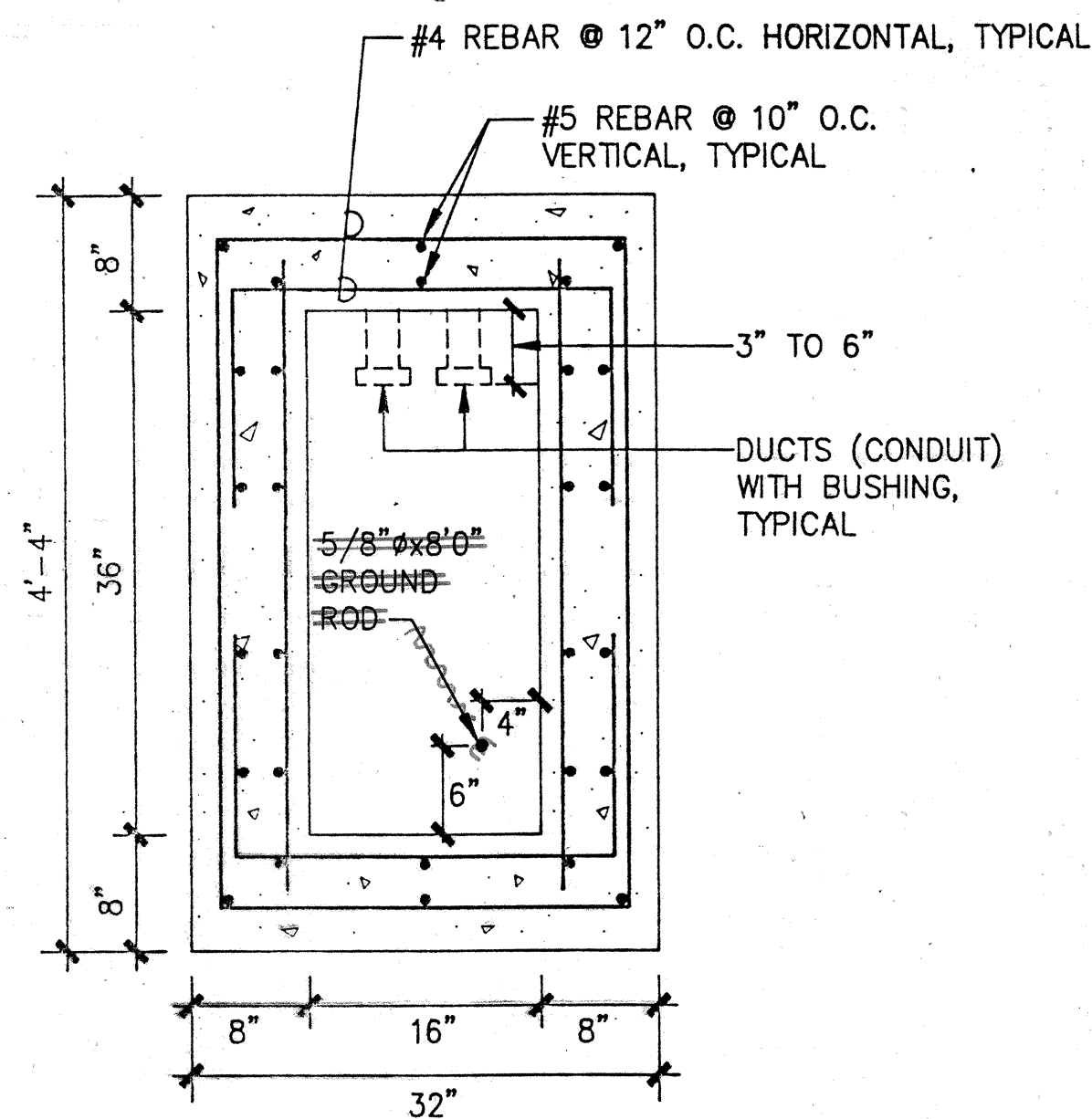
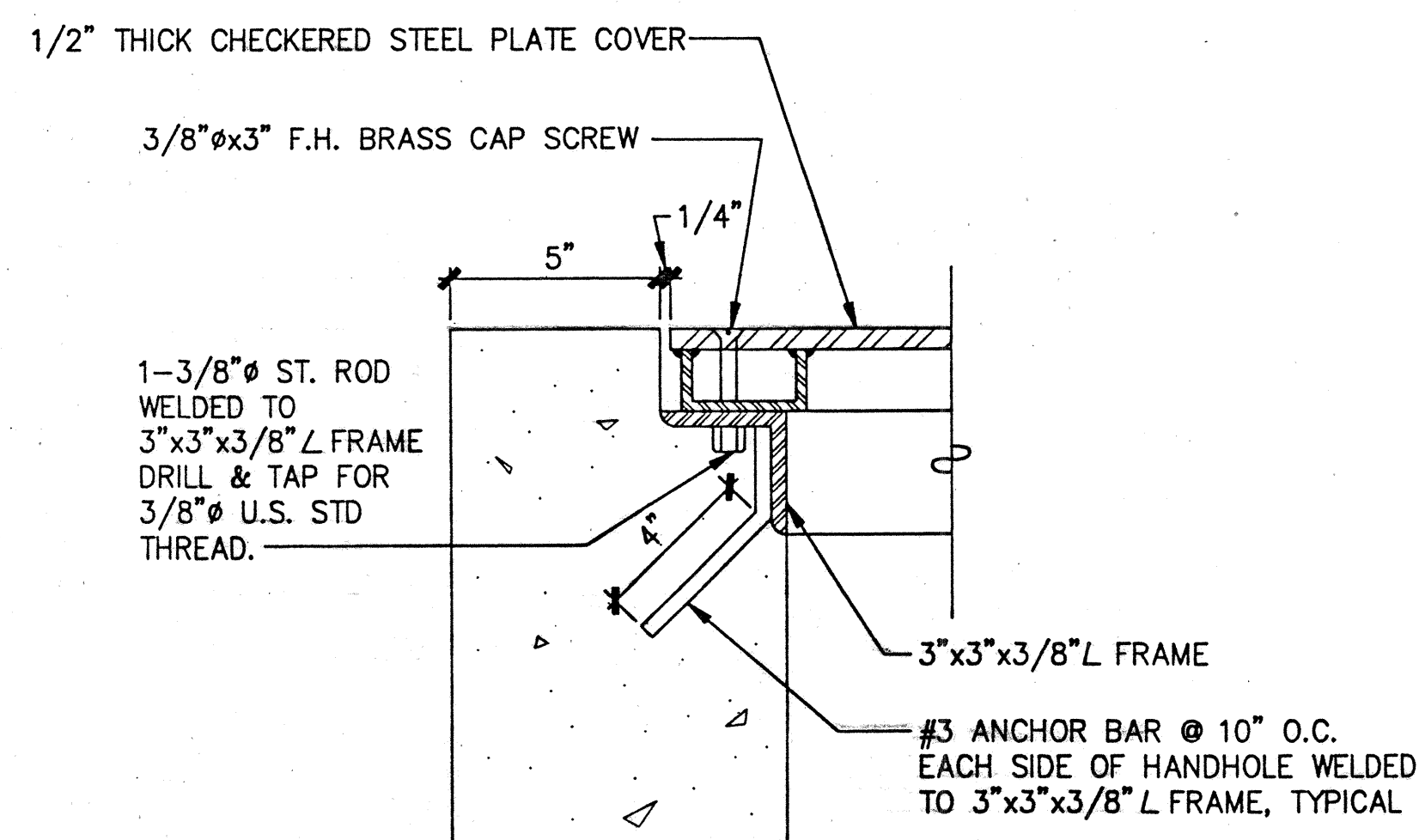


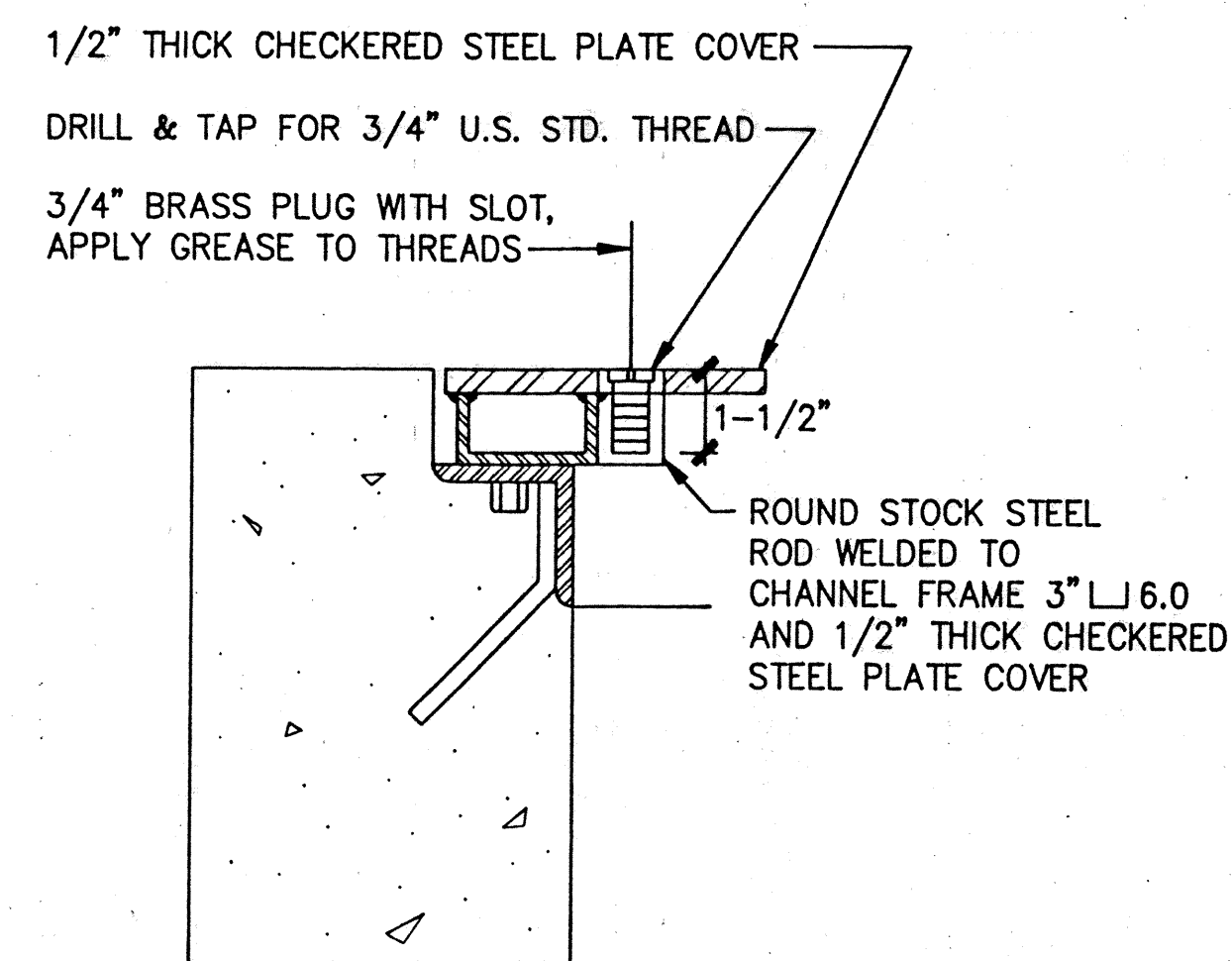
FED. ROAD DIST. NO.	STATE	FED. AID PROJ. NO.	FISCAL YEAR	SHEET NO.	TOTAL SHEETS
HAWAII	HAW.	NH-001-1(28)	1992	15	19



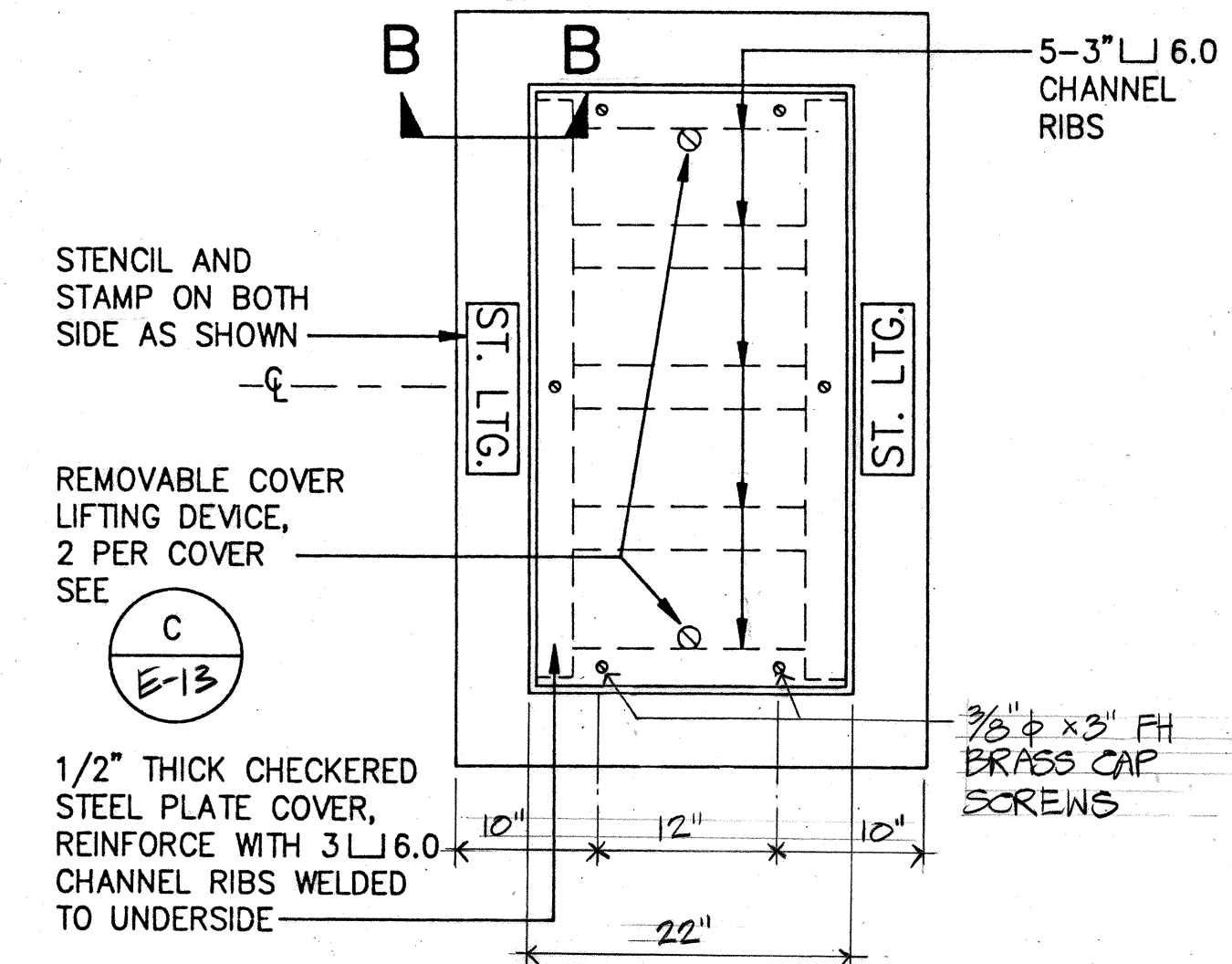
A SECTION "A-A"
E-13 NOT TO SCALE



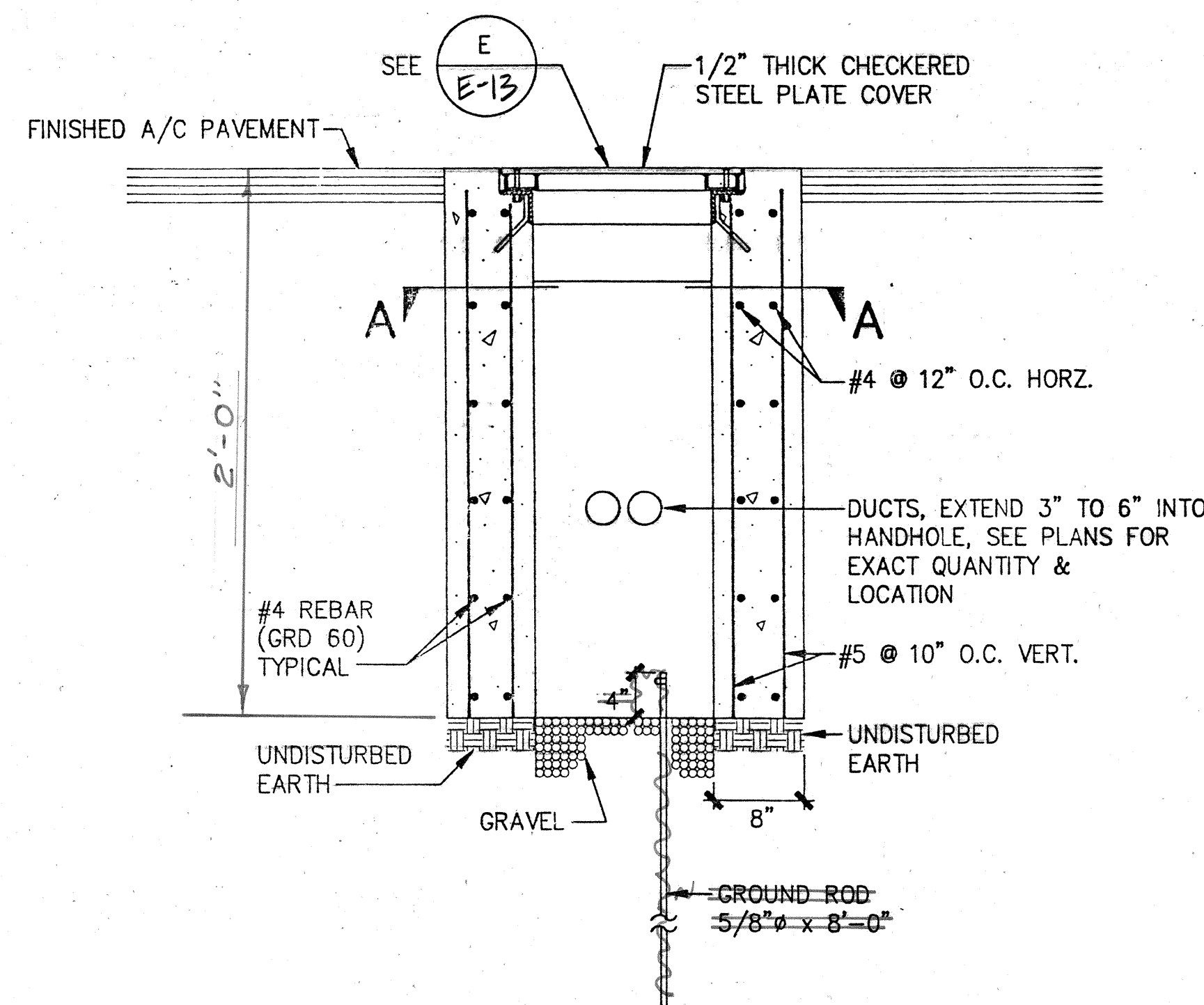
B SECTION "B-B"
E-13 NOT TO SCALE



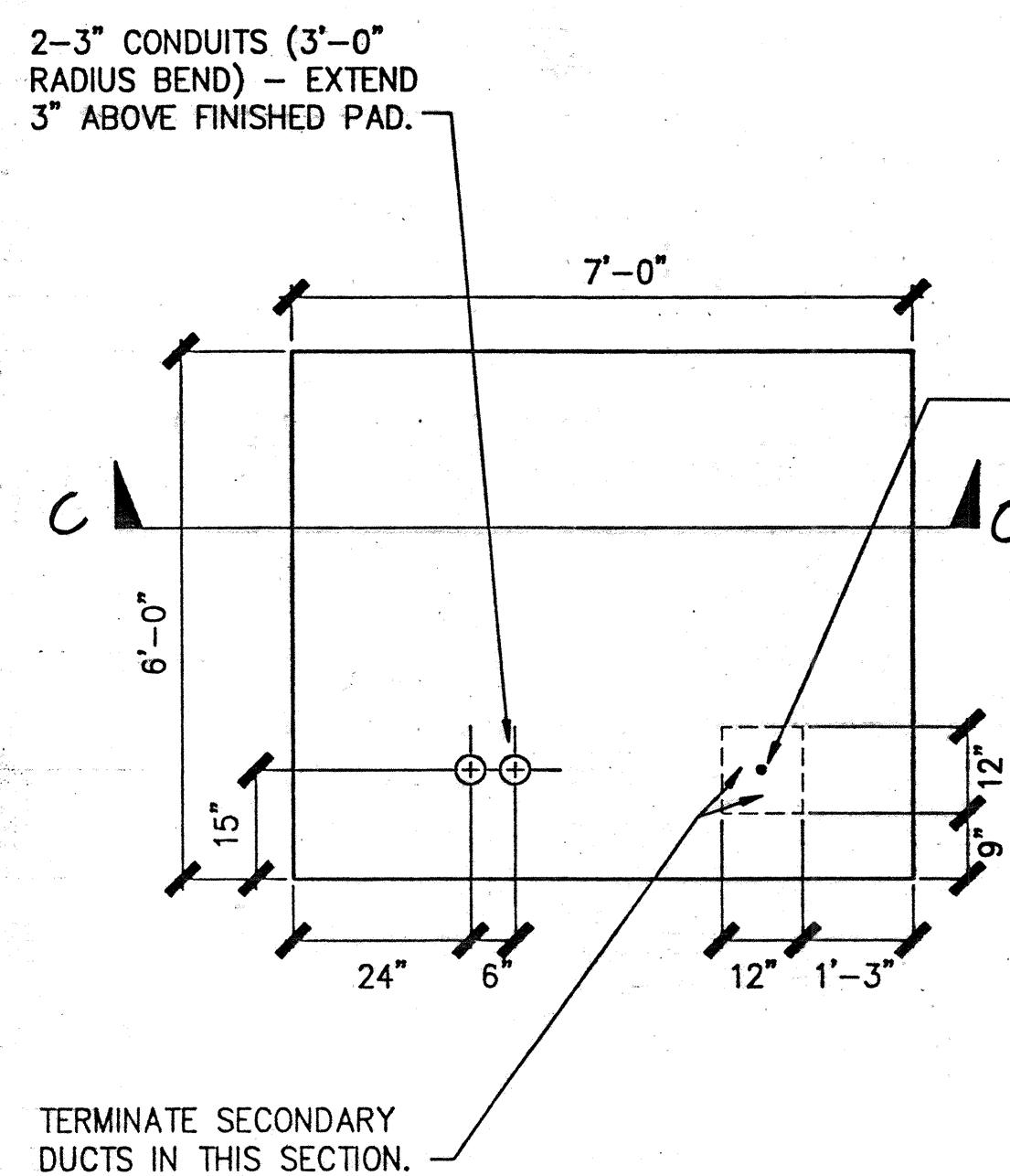
C REMOVABLE COVER LIFTING DEVICE DETAIL
E-13 NOT TO SCALE



E ELECTRIC HANDHOLE PLAN
E-13 NOT TO SCALE



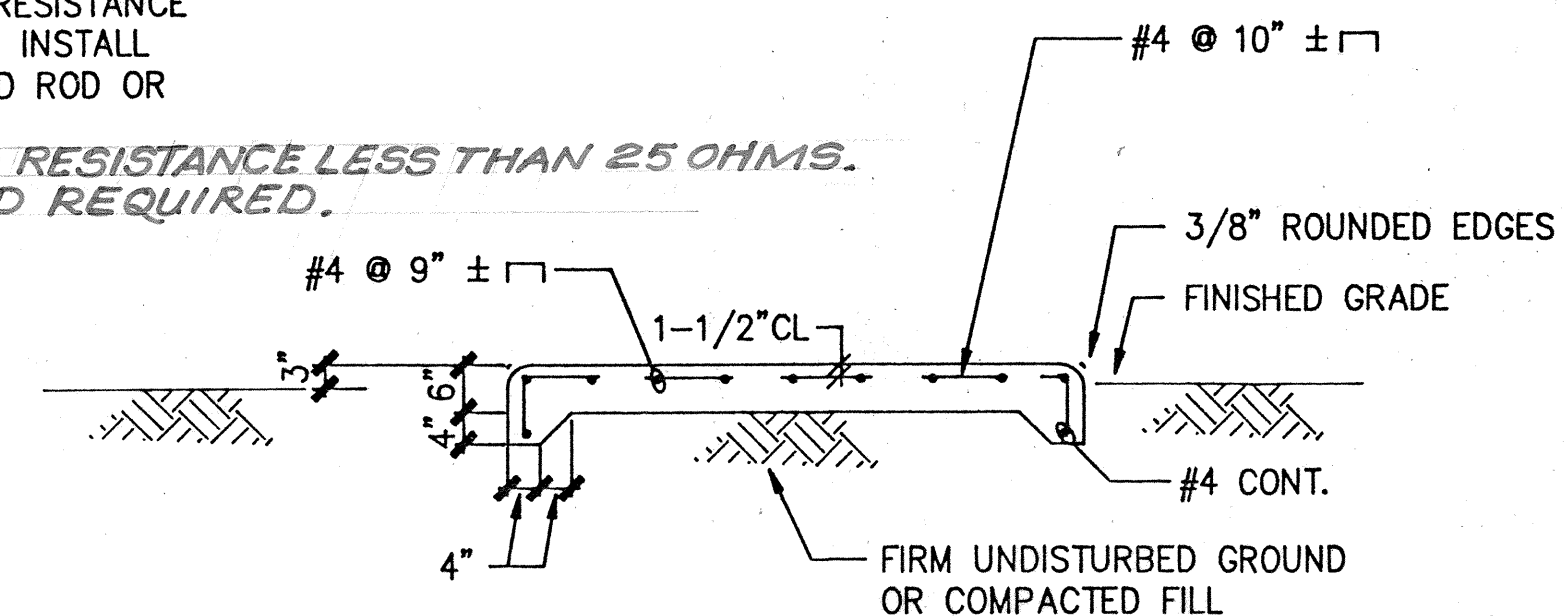
D SECTION AT NEW ELECTRIC HANDHOLE
E-13 NOT TO SCALE



PLAN VIEW

NOTE: TRANSFORMER PAD SHALL CONFORM TO ALL HECO REQUIREMENTS. COORDINATE REQUIREMENTS WITH HECO.

F TRANSFORMER PAD DETAIL
E-13 NOT TO SCALE

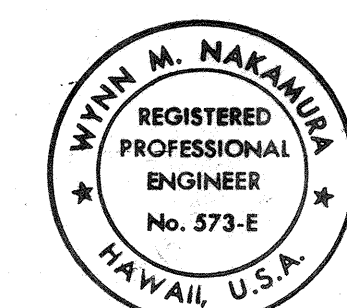


SECTION "C-C"

SURVEY PLOTTED BY	DATE
DRAWN BY	
CHECKED BY	
QUANTITIES	
NO.	

NOTES:

1. FINISHED STEEL WORK (ANGLE IRON FRAME, CHANNELS, 1/2" STEEL PLATE COVER) SHALL BE HOT DIPPED GALVANIZED AFTER FABRICATION.



THIS WORK WAS PREPARED BY ME OR UNDER MY SUPERVISION.
Winn M. Nakamura
NAKAMURA, OYAMA & ASSOC., INC.
CONSULTING ENGINEERS

STATE OF HAWAII
DEPARTMENT OF TRANSPORTATION
HIGHWAYS DIVISION

ELECTRIC HANDHOLE DETAIL
TRANSFORMER PAD DETAIL

PALI HIGHWAY ROADWAY LIGHTING
PALI TUNNEL TO HAKAHAKA ST.

PROJECT NO. NH-001-1(28)

SCALE: NONE DATE: MAY 13, 1992

SHEET NO. E13 OF 19 SHEETS

"AS-BUILT"

15