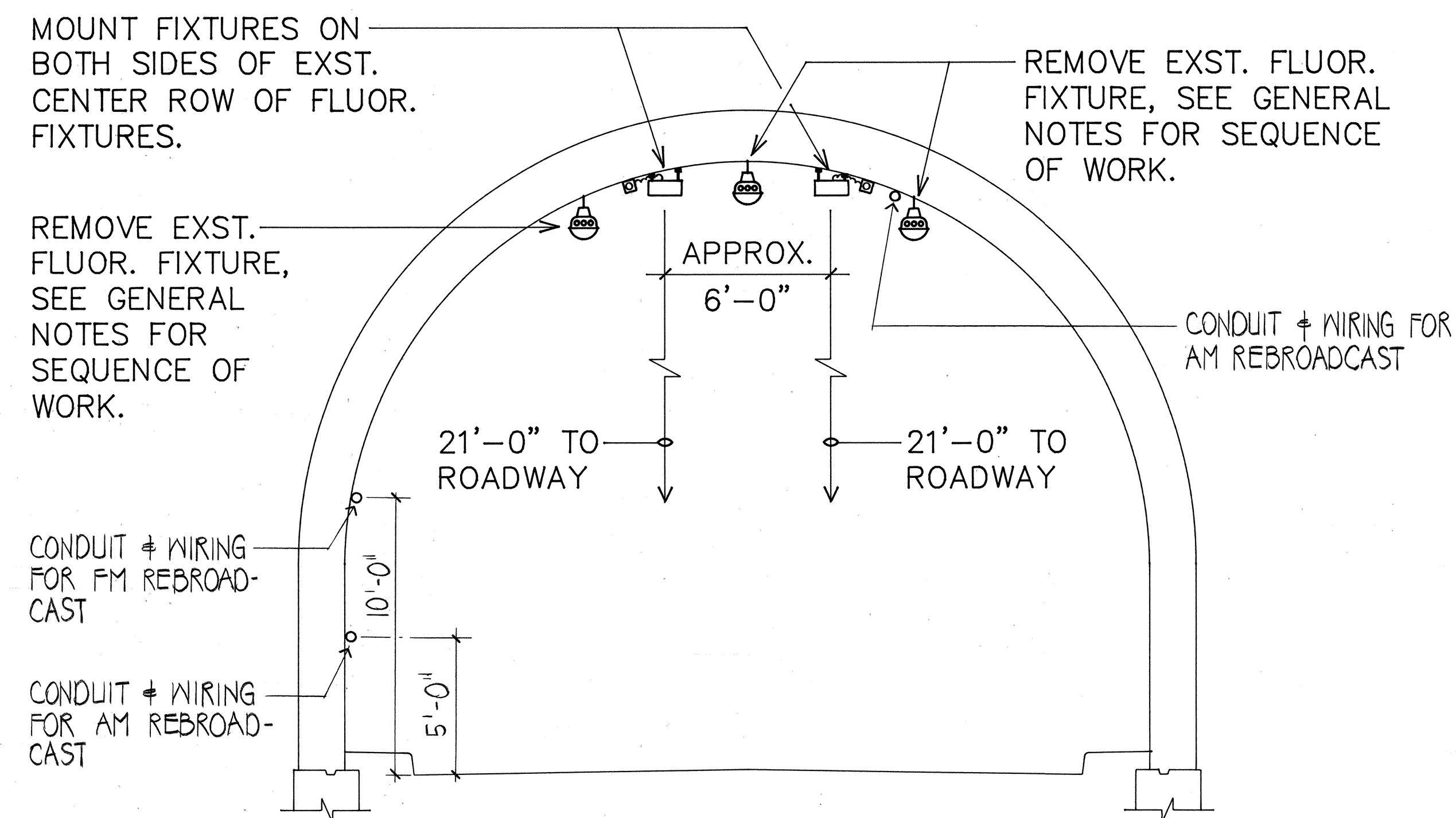
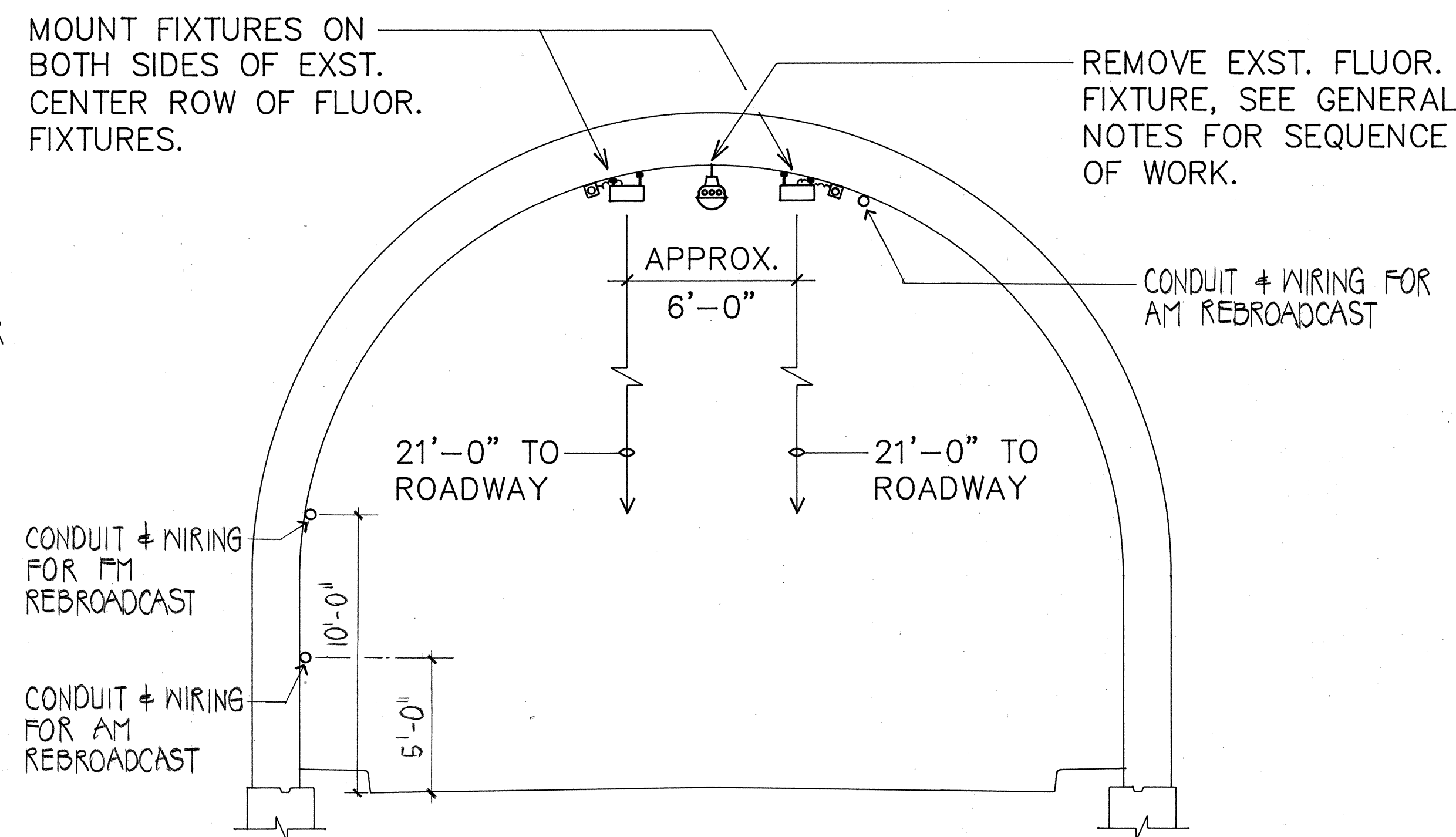


FED. ROAD DIST. NO.	STATE	FED. AID PROJ. NO.	FISCAL YEAR	SHEET NO.	TOTAL SHEETS
HAWAII	HAW.	61D-01-85	1988	21	29



SECTION A

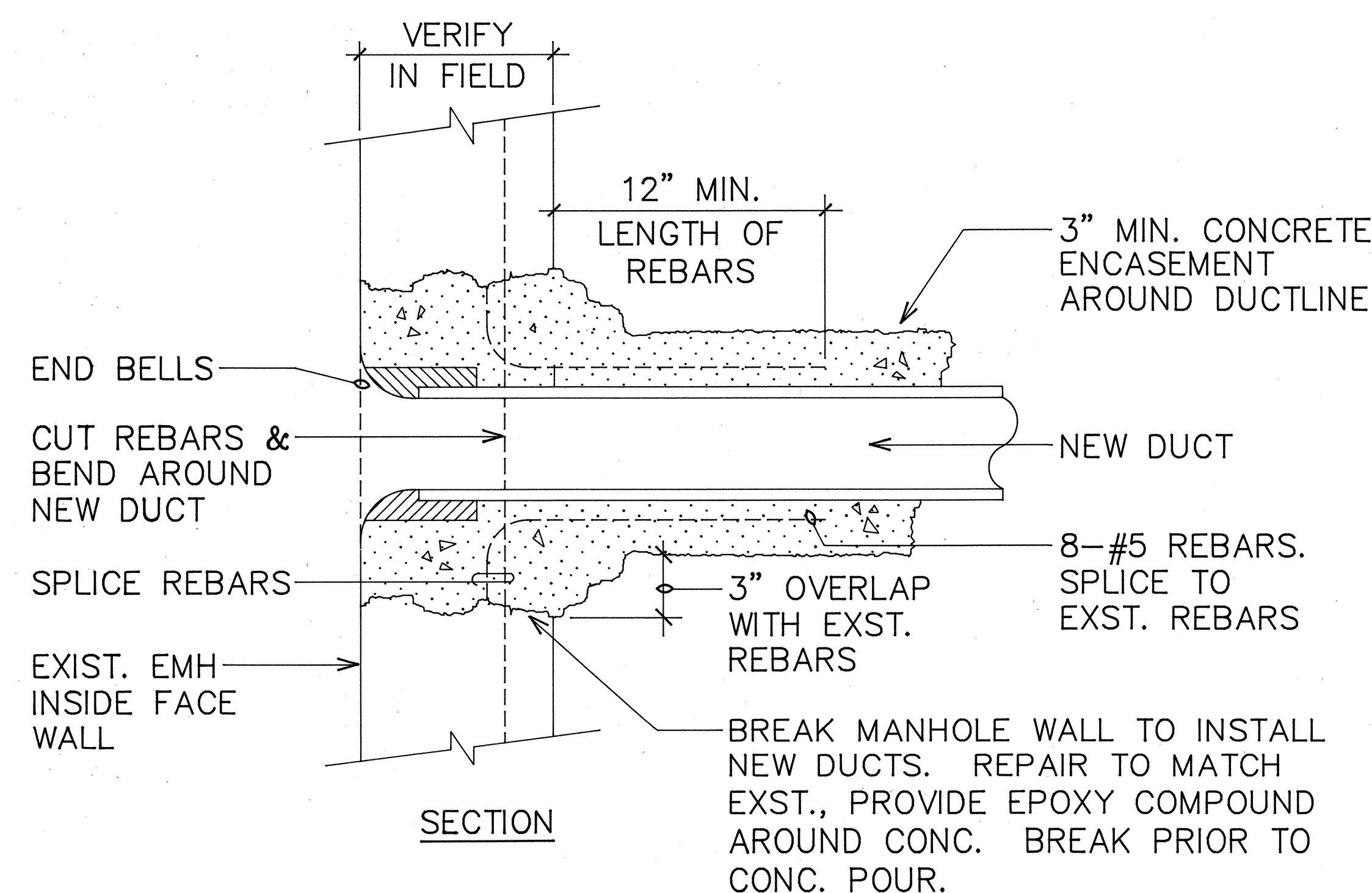
SECTION TAKEN THROUGH OUTBOUND TUNNEL, LOCATIONS FOR REBROADCAST CONDUITS AND WIRING OPPOSITE FOR INBOUND TUNNELS.



SECTION B

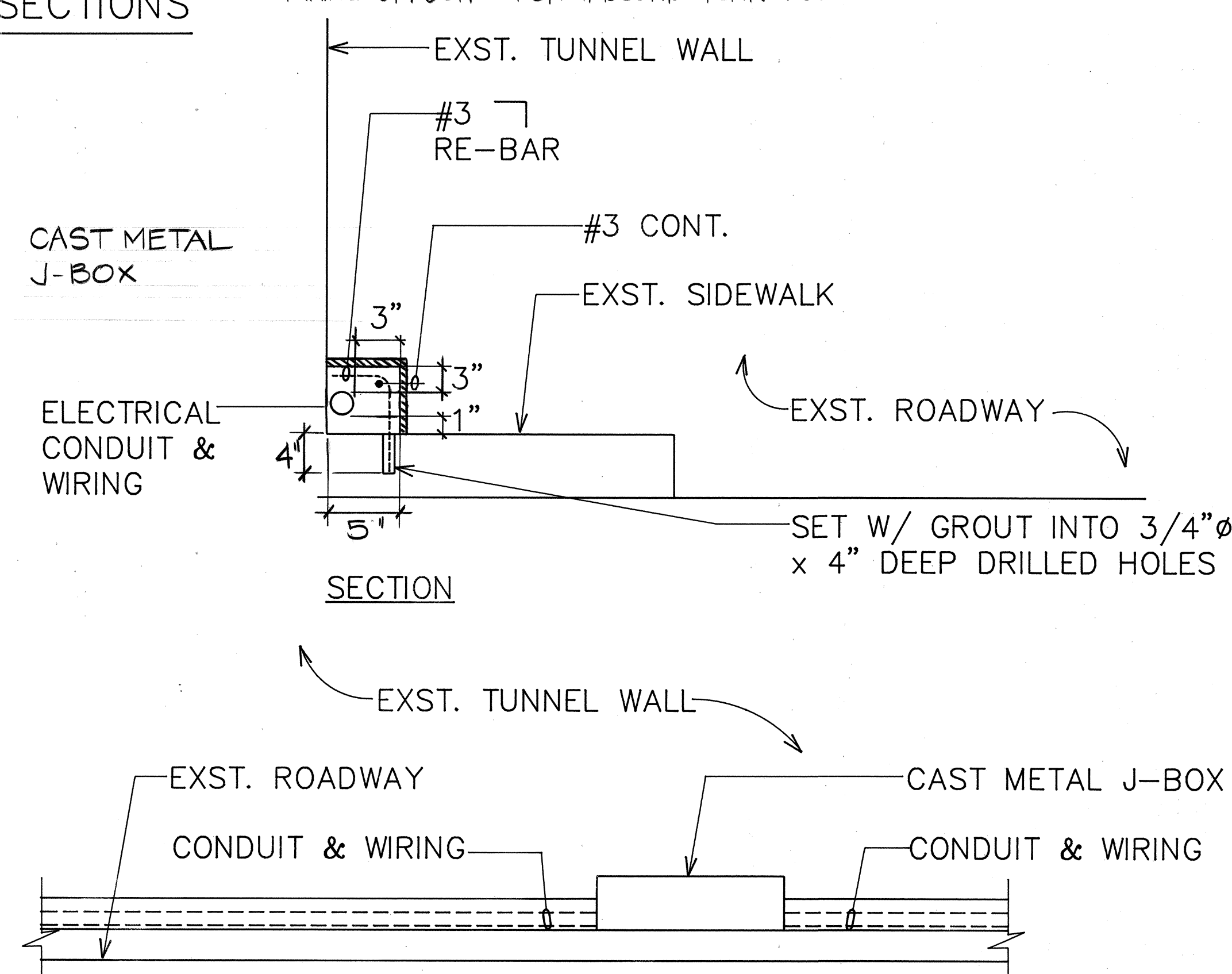
SECTION TAKEN THROUGH OUTBOUND TUNNEL, LOCATIONS FOR REBROADCAST CONDUITS AND WIRING OPPOSITE FOR INBOUND TUNNELS.

B TYPICAL TUNNEL SECTIONS
18E NOT TO SCALE



SECTION

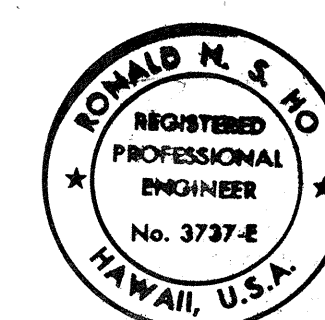
A DETAIL OF DUCT ENTRY INTO EXISTING MANHOLE
18E NOT TO SCALE



SECTION

ELEVATION

C CONCRETE ENCASEMENT DETAIL
18E NOT TO SCALE



THIS WORK WAS PREPARED BY ME
OR UNDER MY SUPERVISION.
Ronald M. S. Ho
12/30/87

STATE OF HAWAII
DEPARTMENT OF TRANSPORTATION
HIGHWAYS DIVISION

TUNNEL SECTIONS & DETAIL

PALI HIGHWAY TUNNELS
HIGHWAY LIGHTING IMPROVEMENTS
PROJECT NO. 61D-01-85

SCALE: NONE DATE: JUL., 1987

SHEET No. 18E OF 29 SHEETS