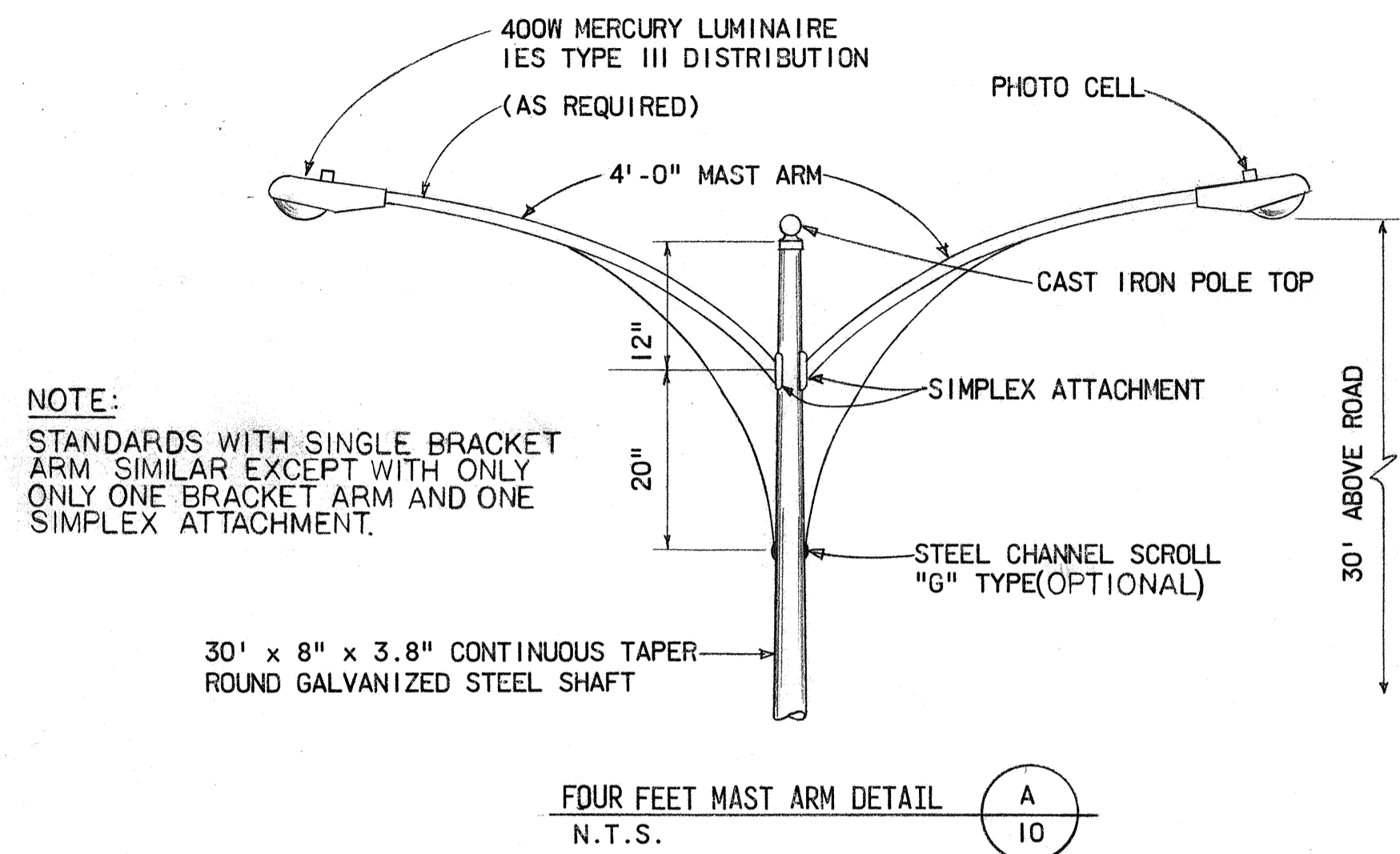
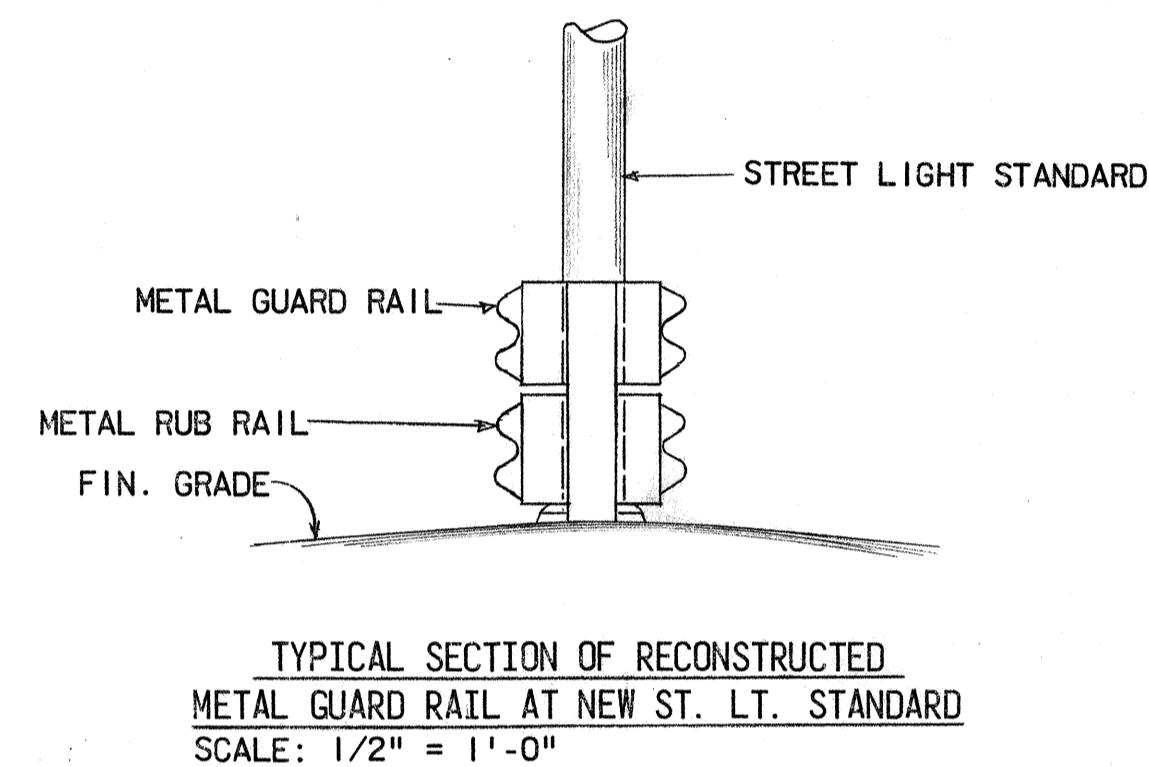
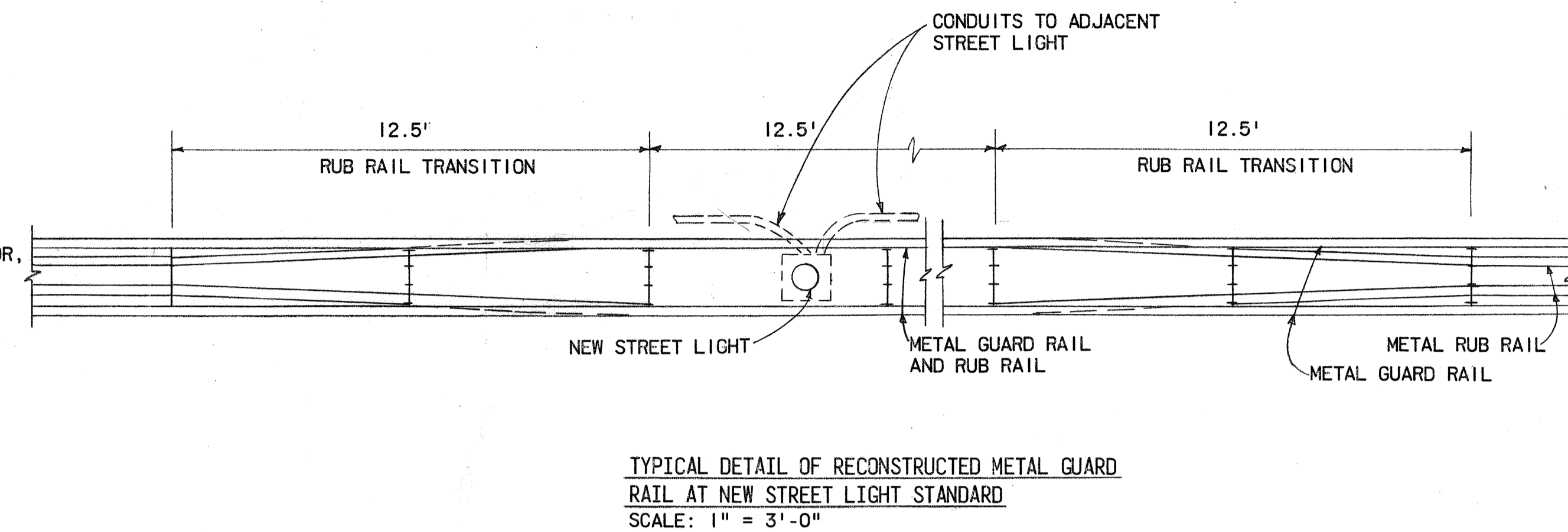
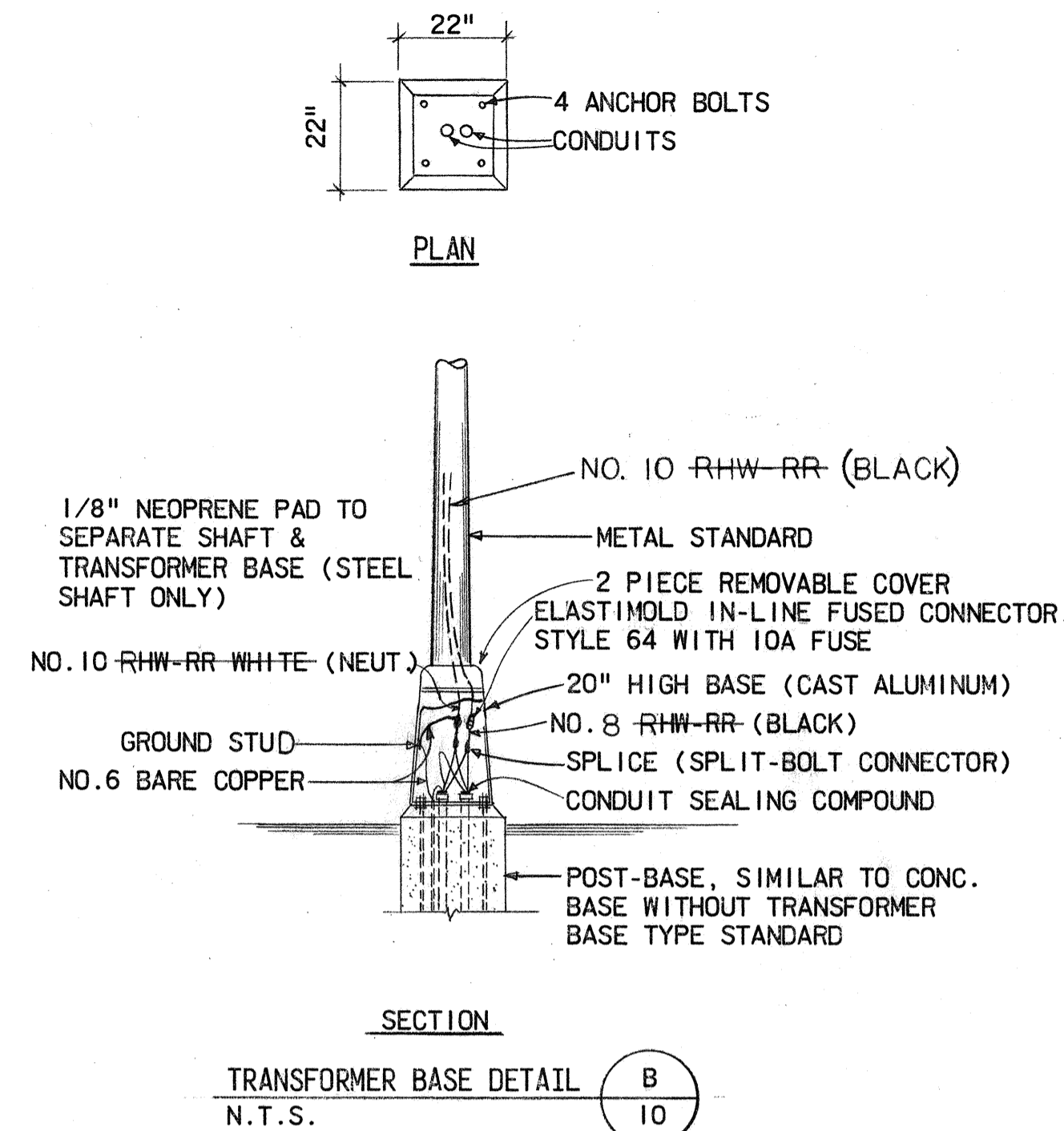
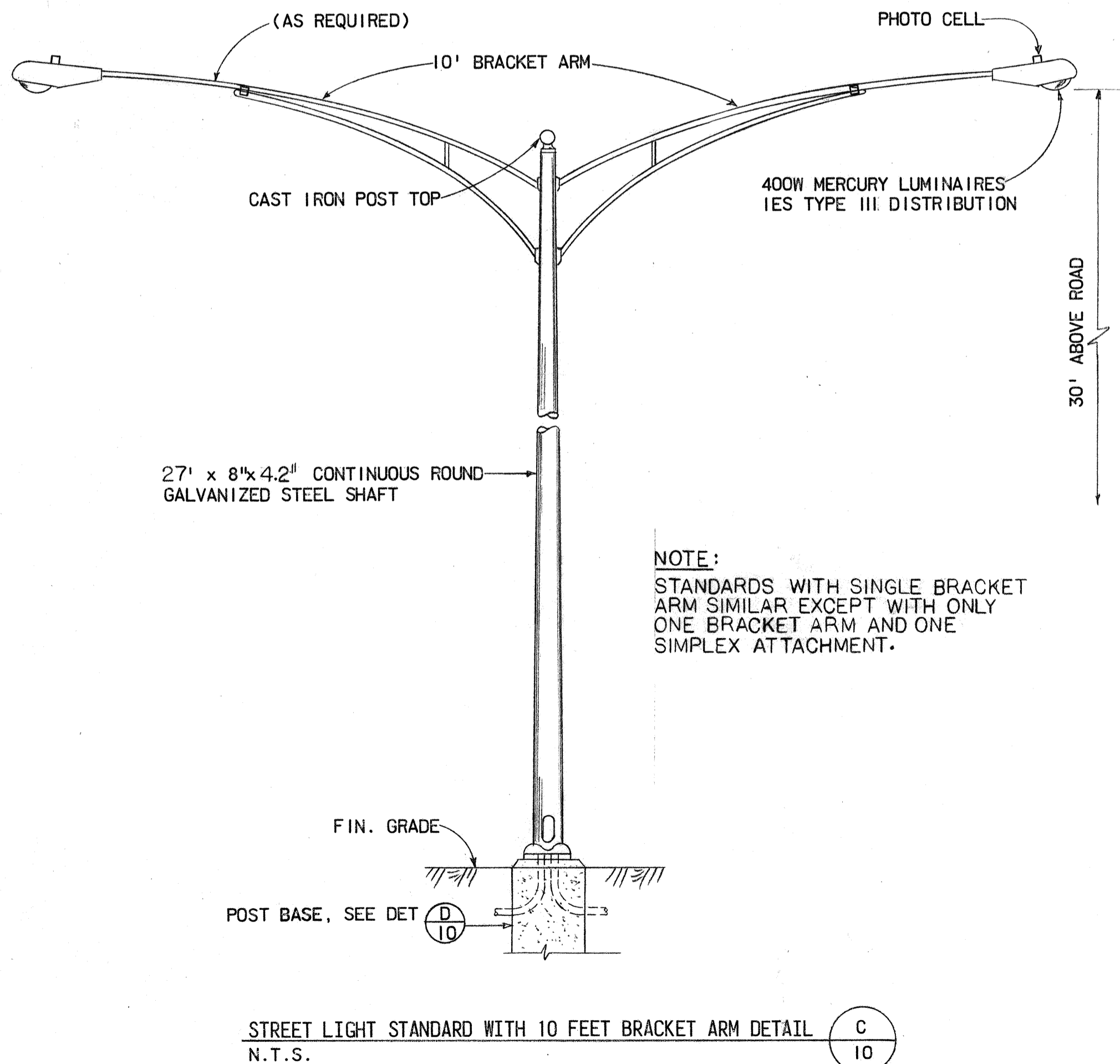


FED. ROAD DIST. NO.	STATE	FED. AID PROJ. NO.	FISCAL YEAR	SHEET NO.	TOTAL SHEETS
HAWAII	HAW.	61B-02-72	1974	10	13

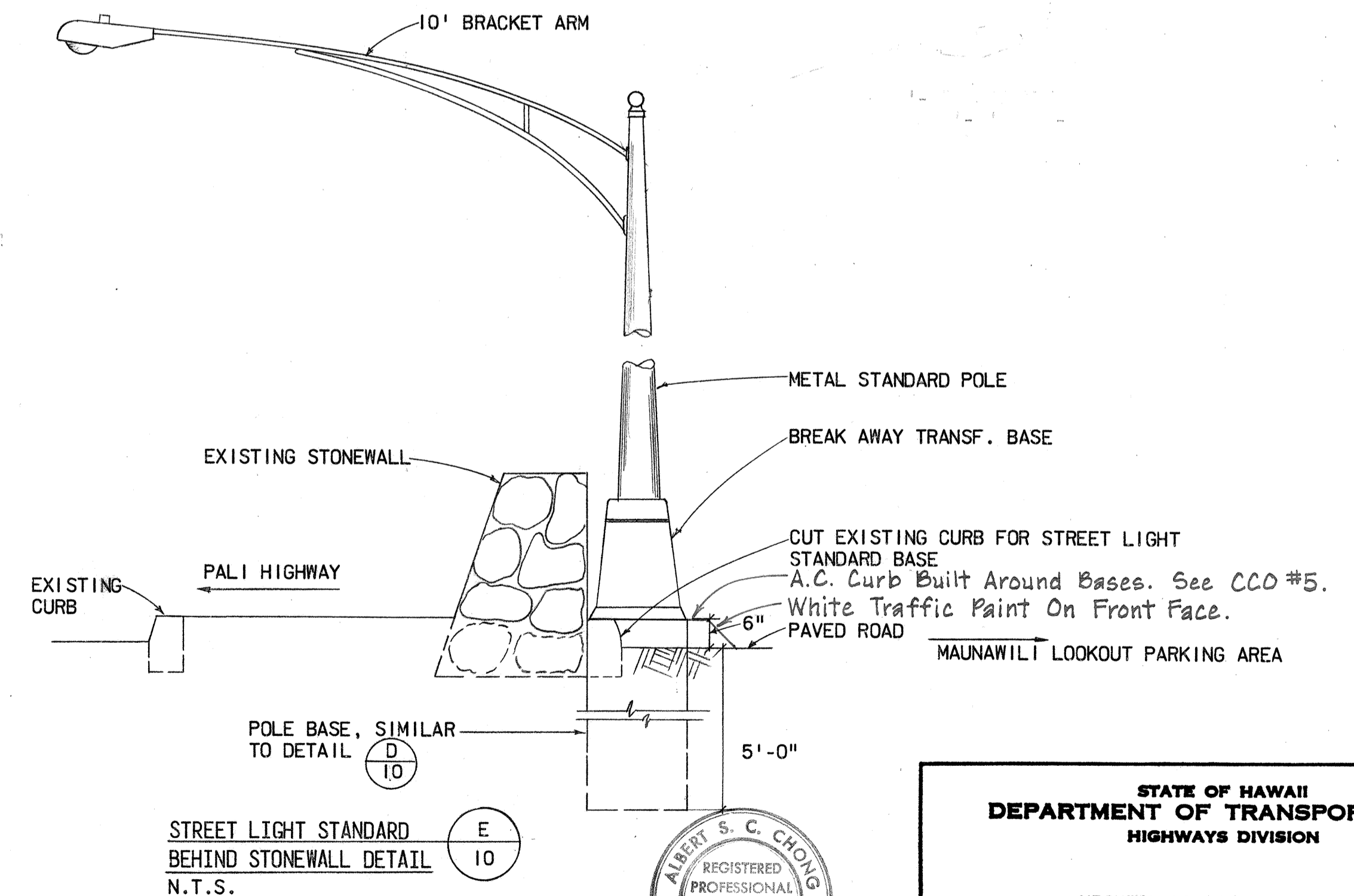
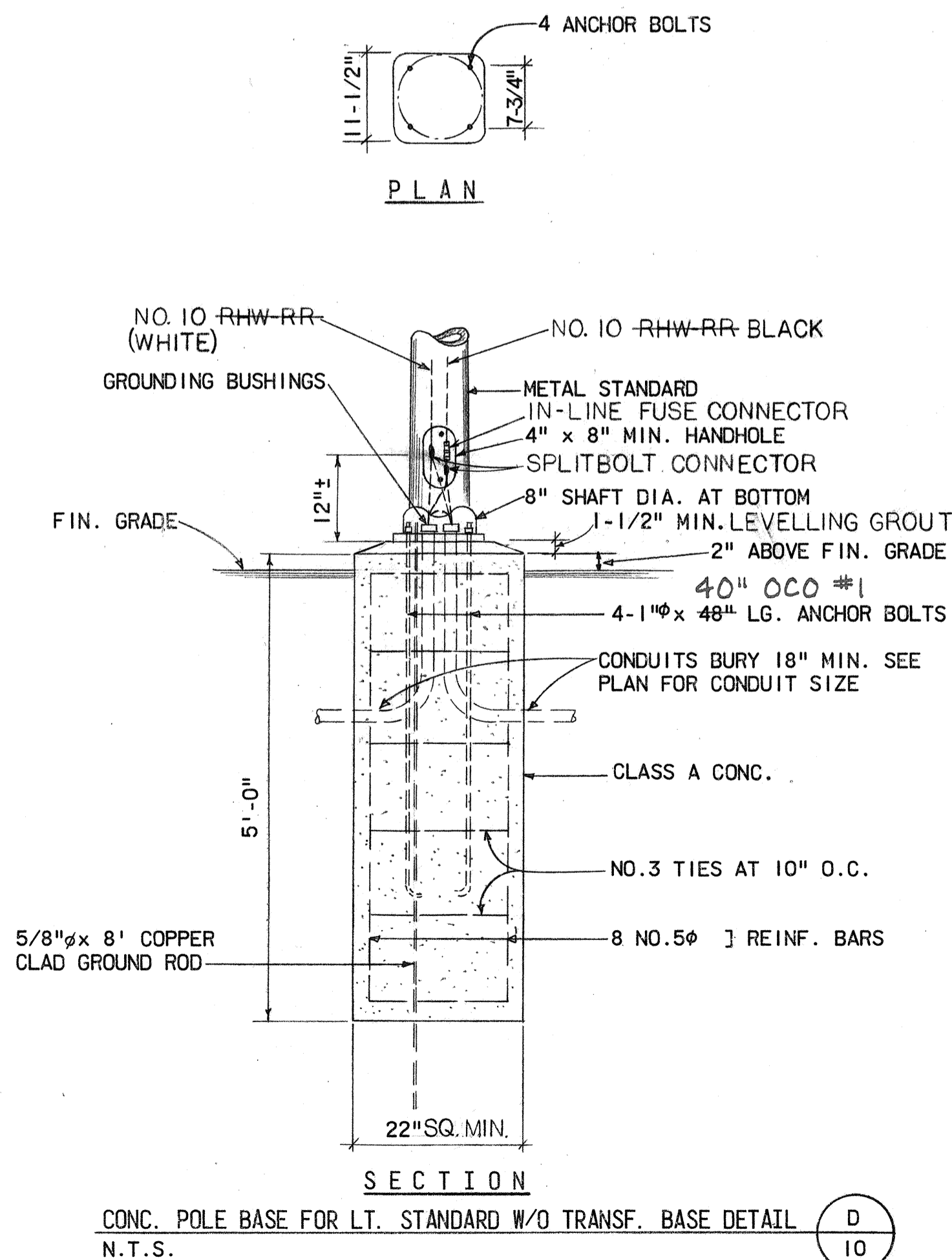


NOTE: Where Type RHW-RR Cables are Indicated, Substitute Cross-Linked Polyethylene, Type USE 600 Y Cables. Option Allowed By Addendum #1.



NOTES FOR RECONSTRUCTING GUARD RAILS

- IT IS INTENDED THAT THE CONTRACTOR SHALL MAKE USE OF ALL POST, RAILS, SPACER BLOCKS AND FITTINGS SALVAGED FROM THE EXISTING GUARD RAIL THAT HAVE NOT DETERIORATED, IN THE ENGINEER'S OPINION, TO AN EXTENT PRECLUDING THEIR USE IN THE RECONSTRUCTED GUARD RAIL.
- IF EXISTING POSTS ARE FOUND TO BE DAMAGED OR DEFORMED UPON REMOVAL, THE STATE WILL FURNISH REPLACEMENT POSTS TO BE INSTALLED BY THE CONTRACTOR. HOWEVER, ANY SALVAGEABLE MATERIALS DAMAGED THROUGH THE CONTRACTOR'S NEGLIGENCE, SHALL BE REPLACED AT HIS OWN EXPENSE.
- ADDITIONAL SPACER BLOCKS REQUIRED SHALL BE INCIDENTAL TO RECONSTRUCTION OF GUARD RAIL.



THIS WORK WAS PREPARED BY ME
OR UNDER MY SUPERVISION
Albert S. C. Chong
Albert S. C. Chong, PE

STATE OF HAWAII
DEPARTMENT OF TRANSPORTATION
HIGHWAYS DIVISION

HIGHWAY LIGHTING IMPROVEMENT
ON PALI HIGHWAY
BETWEEN PALI TUNNEL AND
WAIMANALO JUNCTION
PROJECT NO. 61B-02-72

SHEET No. 10 OF 13 SHEETS