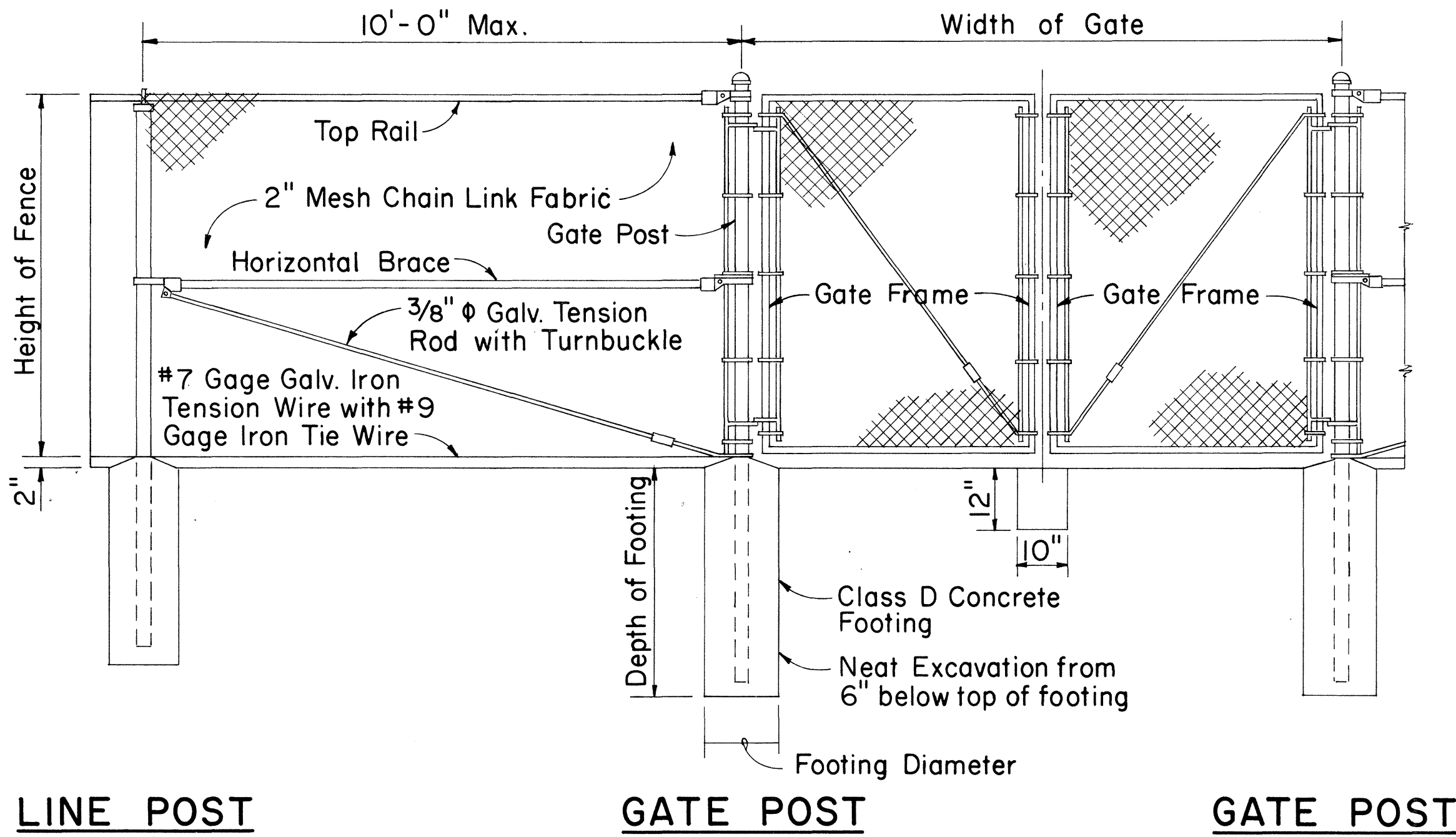


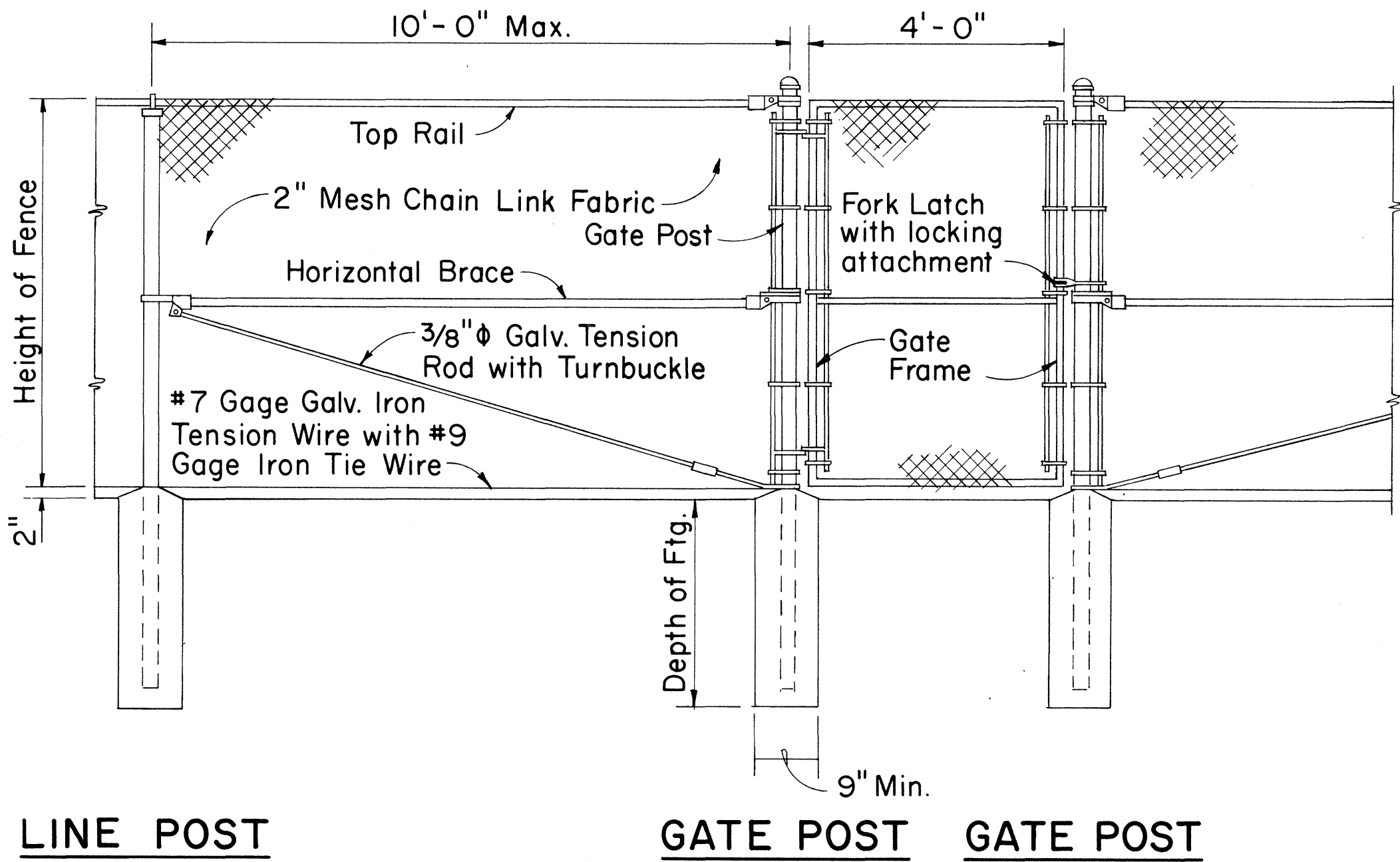
FED. ROAD DIST. NO.	STATE	FED. AID PROJ. NO.	FISCAL YEAR	SHEET NO.	TOTAL SHEETS
HAWAII	HAW.	F-061-1(15)	1969	22	37



LINE POST GATE POST GATE POST

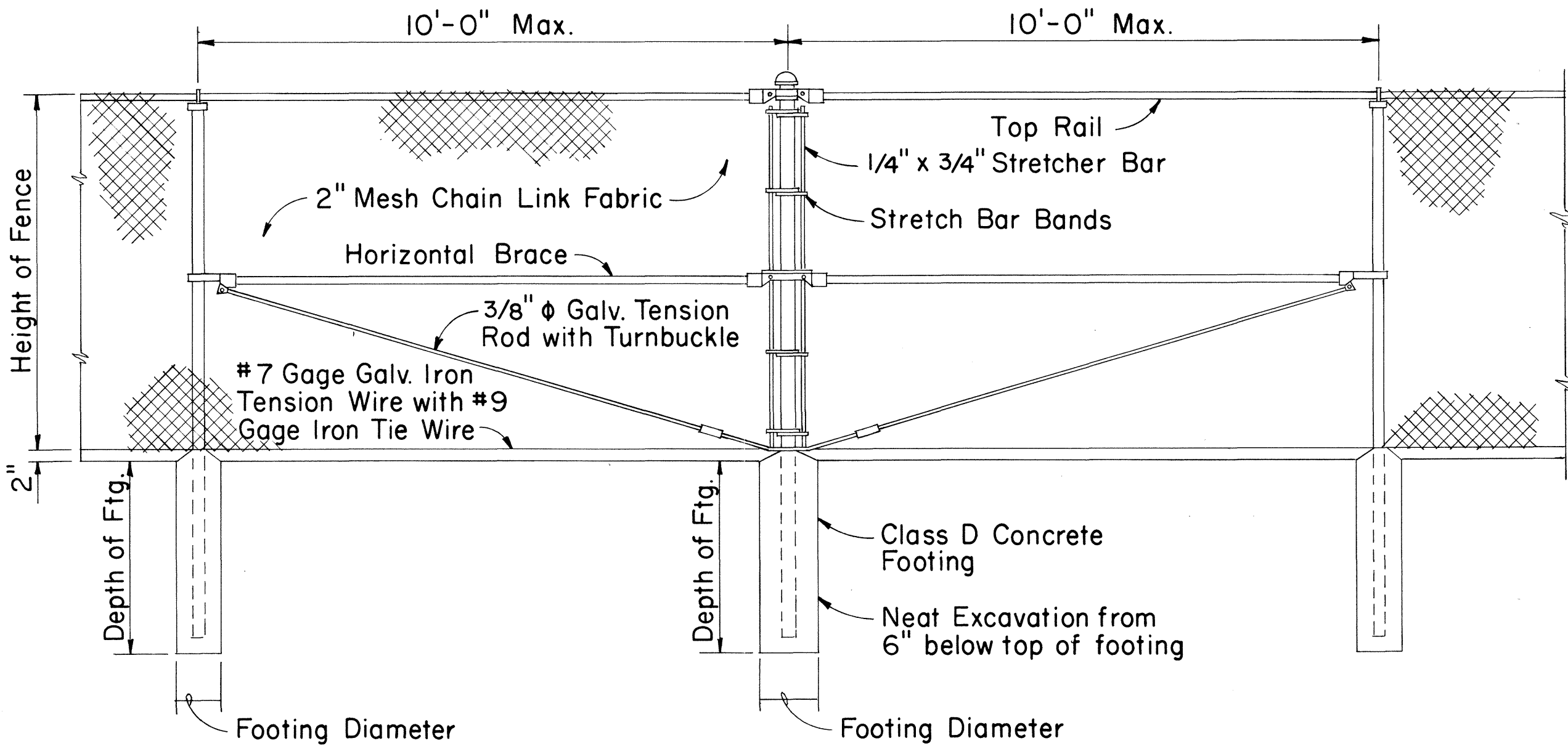
DETAIL OF CHAIN LINK GATE

NOTE: 1. Gate fork latch and lock, flush plate and anchor, and plunger shall be installed with Gates, and shall be considered as incidental to Chain Link Fence Gate.
2. Gate frames shall be mitered and welded at corners.
3. Fence detail not shown shall be in accordance with the Standard Specifications.



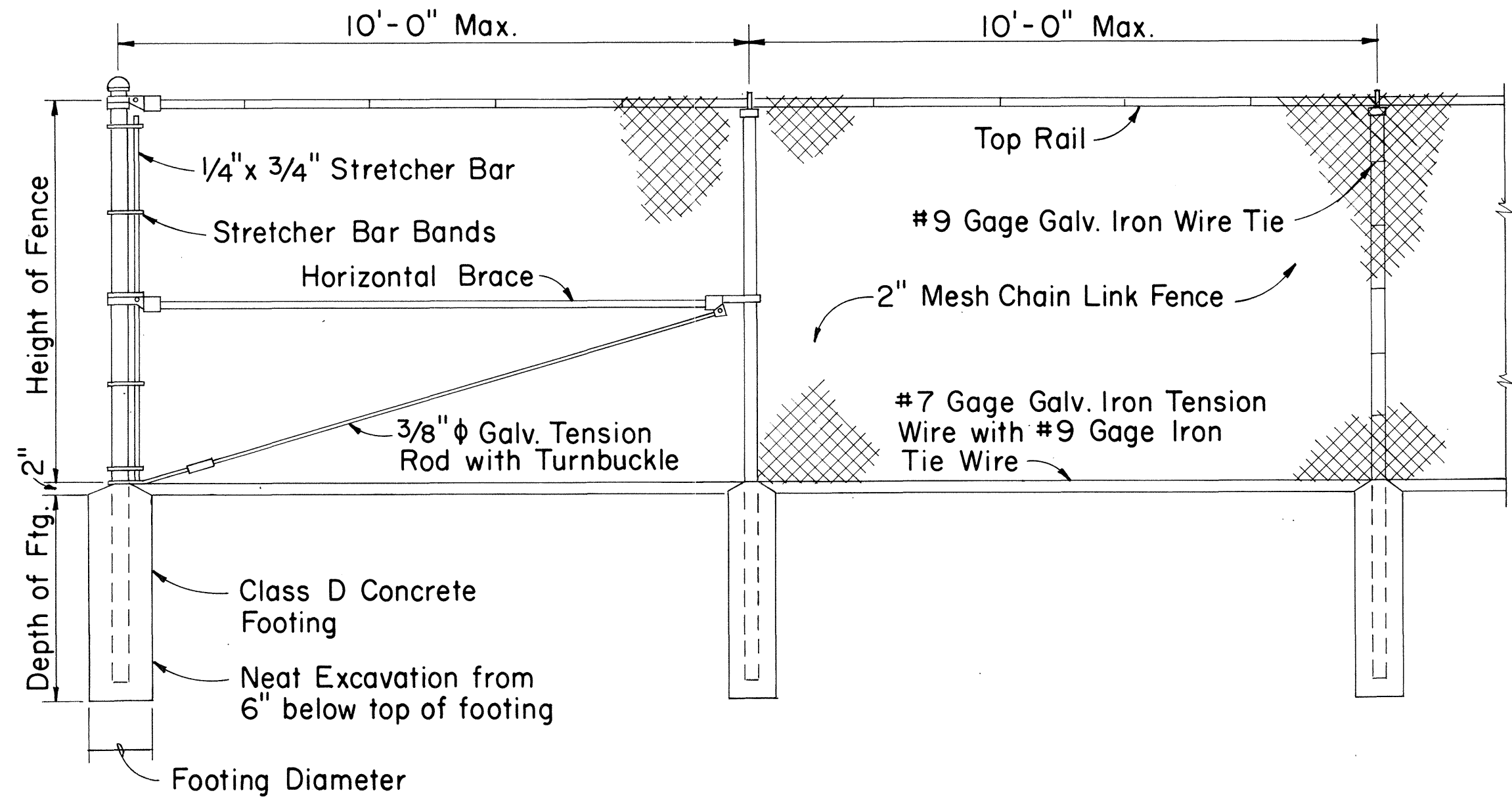
LINE POST GATE POST GATE POST

DETAIL OF 4 FT. CHAIN LINK GATE



LINE POST PULL POST LINE POST

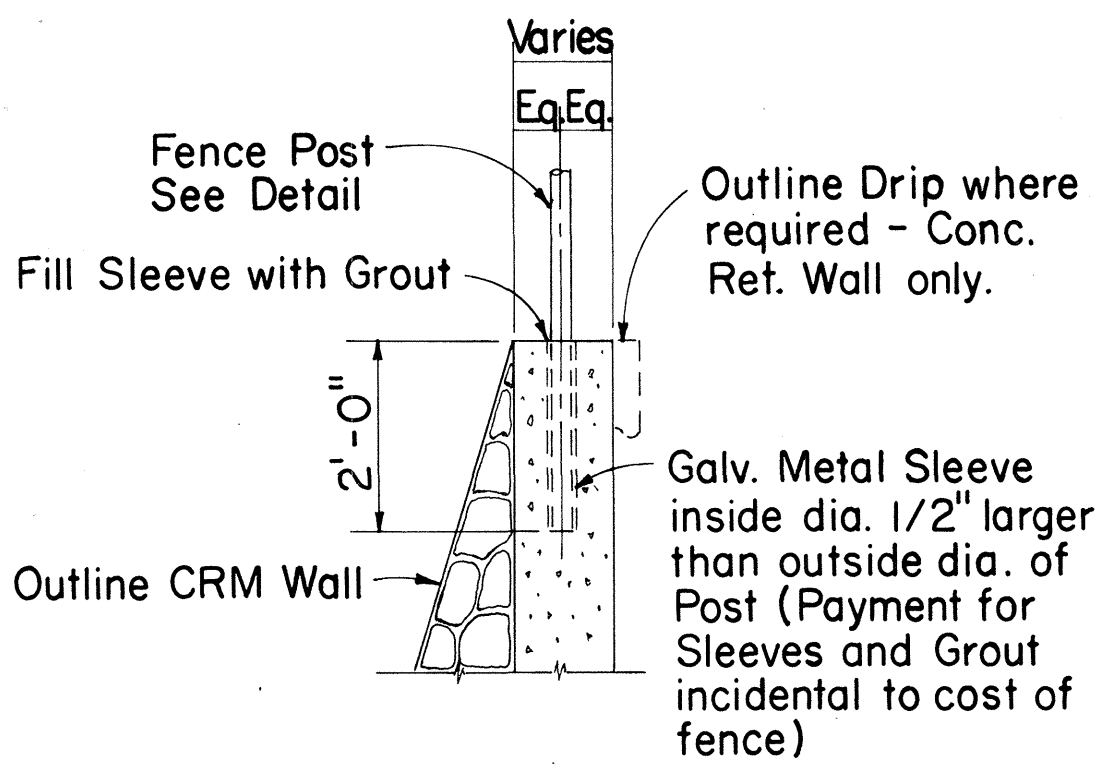
TYPICAL SECTION
(WITH CONCRETE FOOTING)



END POST LINE POST LINE POST

CHAIN LINK FENCE DETAILS

Height of Fence	Minimum Depth of Footing		Minimum Footing Diameter	
	Line Post	Corner, Pull, End and Gate Posts	Line Post	Corner, Pull and End Posts
3'	2'-0"	2'-6"	8"	8"
4'	2'-6"	2'-6"	8"	8"
5'	3'-0"	3'-0"	8"	8"
6'	3'-0"	3'-0"	8"	9"



TYPICAL SECTION
(ON CRM & CONC. RET. WALL)

STATE OF HAWAII
DEPARTMENT OF TRANSPORTATION
HIGHWAYS DIVISION

STANDARD DETAILS
CHAIN LINK FENCE

Scale: 1/2" = 1'-0" Date:

SHEET No. 1 OF 1 SHEETS

ORIGINAL PLAN	DATE
DESIGNED BY	
NOTED BY	
CHECKED BY	
NO.	