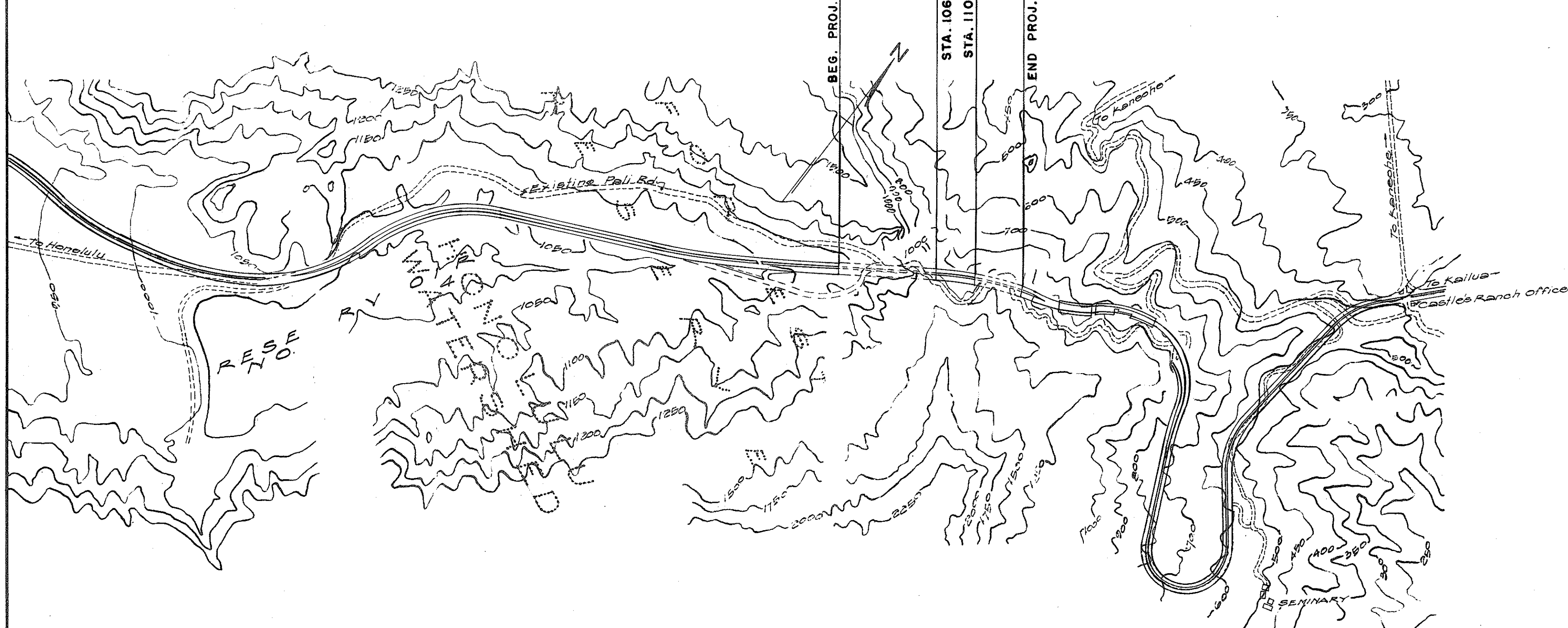


INDEX TO DRAWINGS	
SHEET NO.	DESCRIPTION
1	TITLE SHEET
2 & 3	TUNNEL LIGHTING IMPROVEMENT
4 & 5	SECONDARY GROUTING
5 & 6	REPAINTING
6 & 7	RESURFACING

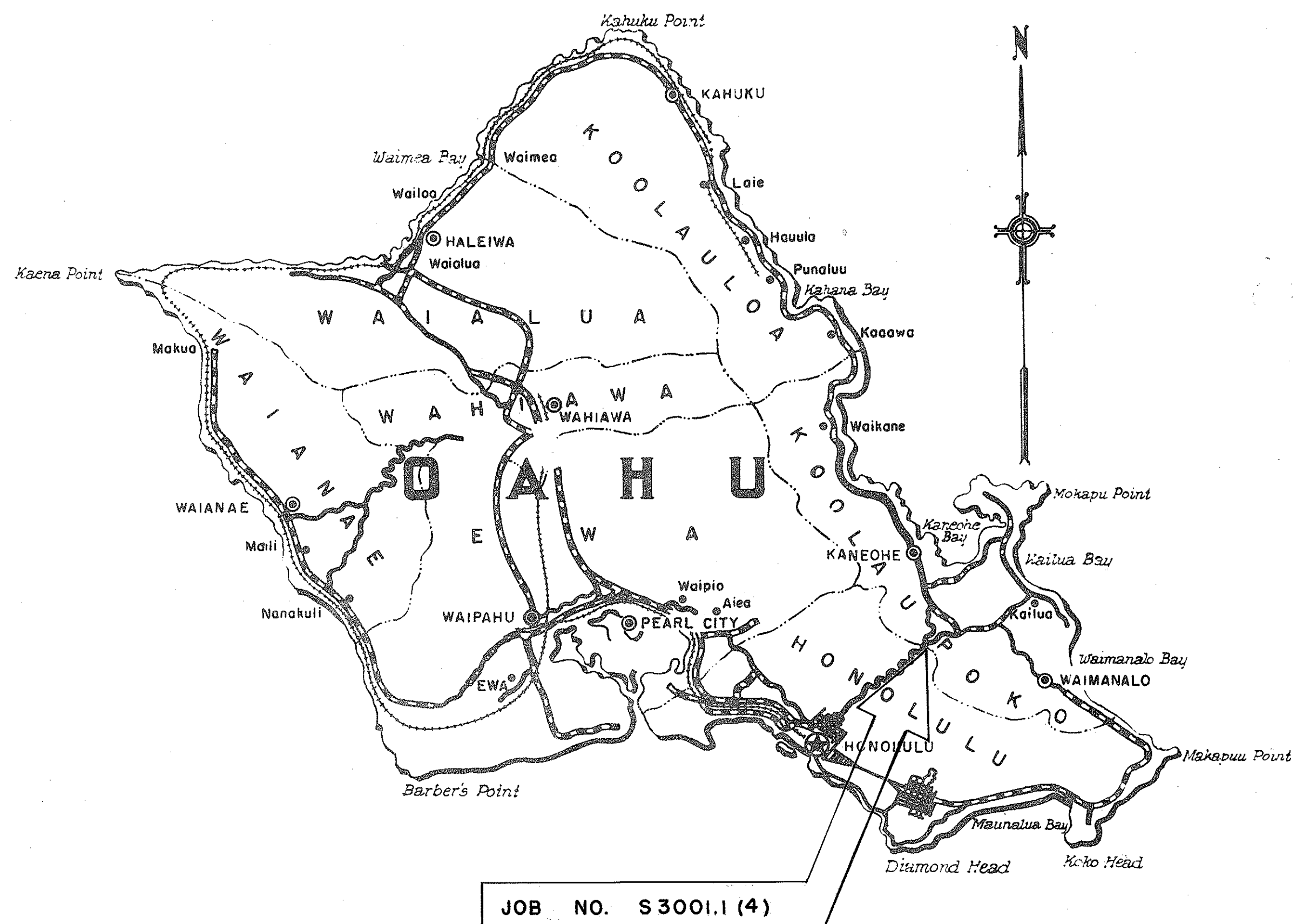
CONVENTIONAL SIGNS	
Centerline	125
Boundary Lines	or
Fences (Named)	
Existing Roadways	
Circular Culvert	
Box Culvert	
Bridge	
Telephone Pole	
Electric Power Pole	
Water Main	W ₂ W ₂ (W ₄ , 8, 12, Etc.)
Storm Drain	SD ₁₂ SD ₁₂ (SD ₁₈ , 24, Etc.)
Concrete Drop Intake	C.D.I.
Standard Catch Basin	S.C.B.
Standard Manhole	M.H.S.
Sewer Manhole	S.M.H.
Telephone Manhole	T.M.H.
Fire Hydrant	F.H.
Tree (Large, named)	Mango Coco
Railroad	
Telephone Underground Cable	TC
Water Meter	WM



LAYOUT OF PROJECT
SCALE : 1"= 10,000

Gross Length of Project..... 0.354 Mile
Tunnels 0.284 Mile

TERRITORY OF HAWAII
TERRITORIAL HIGHWAY DEPARTMENT
HONOLULU, OAHU, T. H.
**AS BUILT
PLANS FOR**
**CERTAIN IMPROVEMENT
AND
OTHER MISCELLANEOUS WORK
ON THE
PALI INBOUND TUNNELS**
DISTRICTS OF HONOLULU AND KOOLAUPOKO
ISLAND OF OAHU
JOB NO. S 3001.1(4)



Federal Aid Projects Previously Constructed Or Under Construction

NOTE:
ALL CHANGES MADE DURING CONSTRUCTION
HAVE BEEN NOTED IN RED ON THESE
TRACINGS AND CHECKED BY:

G. M. Hendry
DISTRICT ENGINEER
OCT 20 1959
DATE

APPROVED DATE 1/28/59
Wm. W. White
TERRITORIAL HIGHWAY ENGINEER