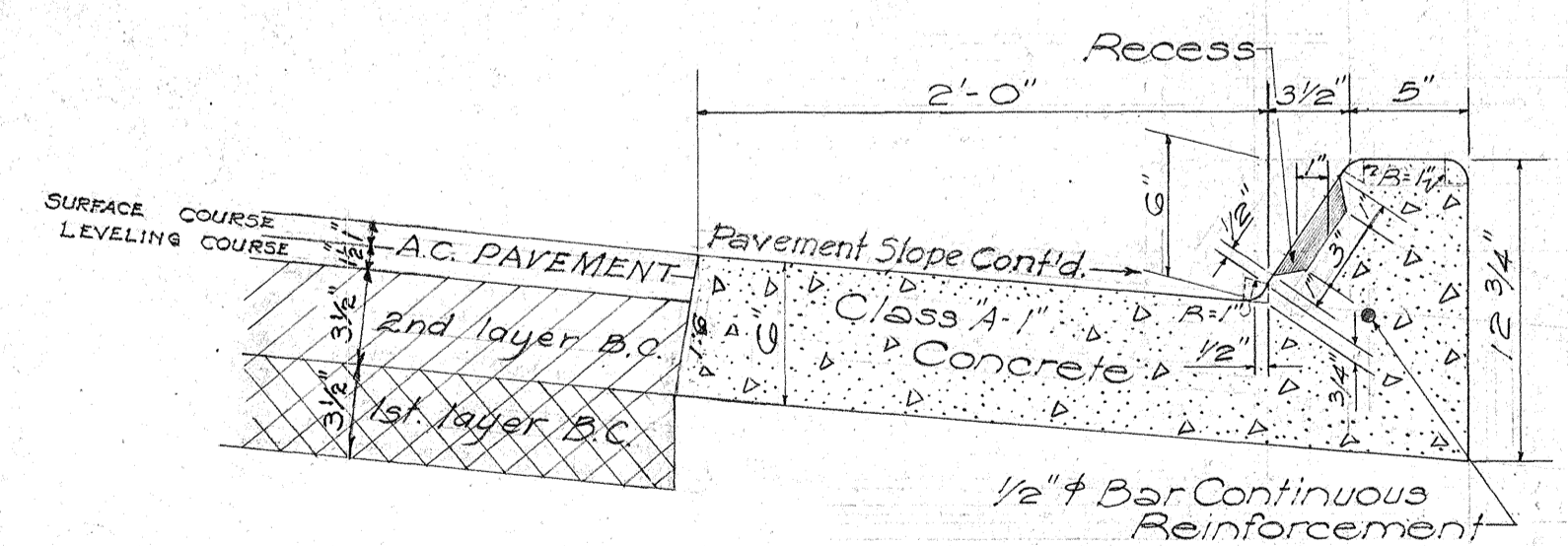
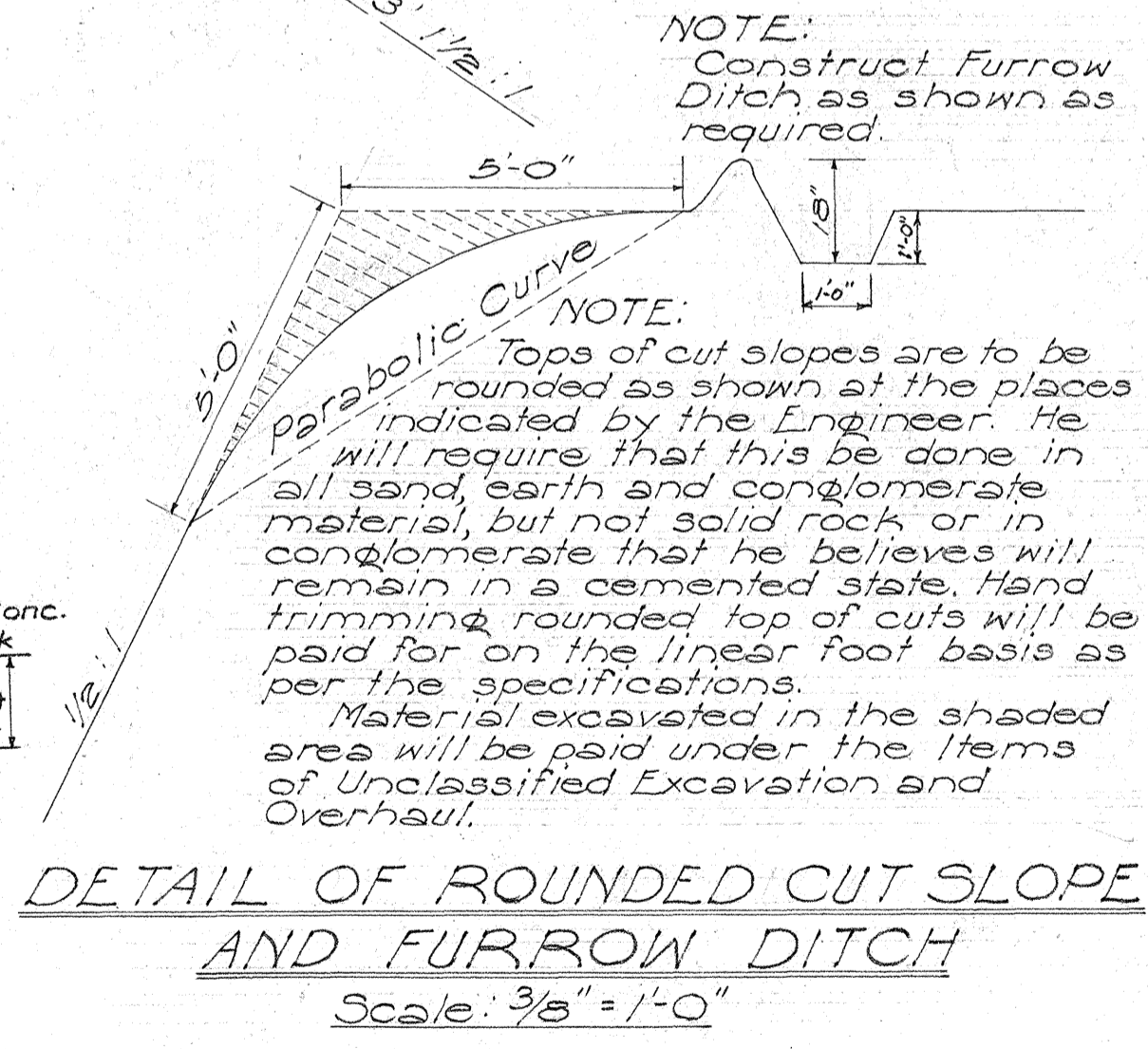
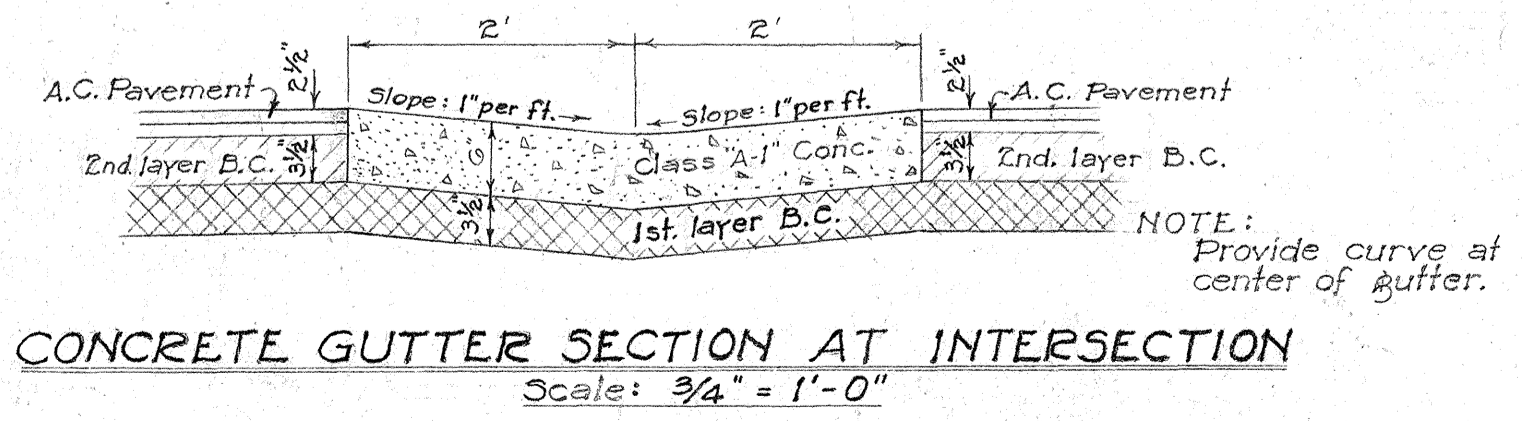
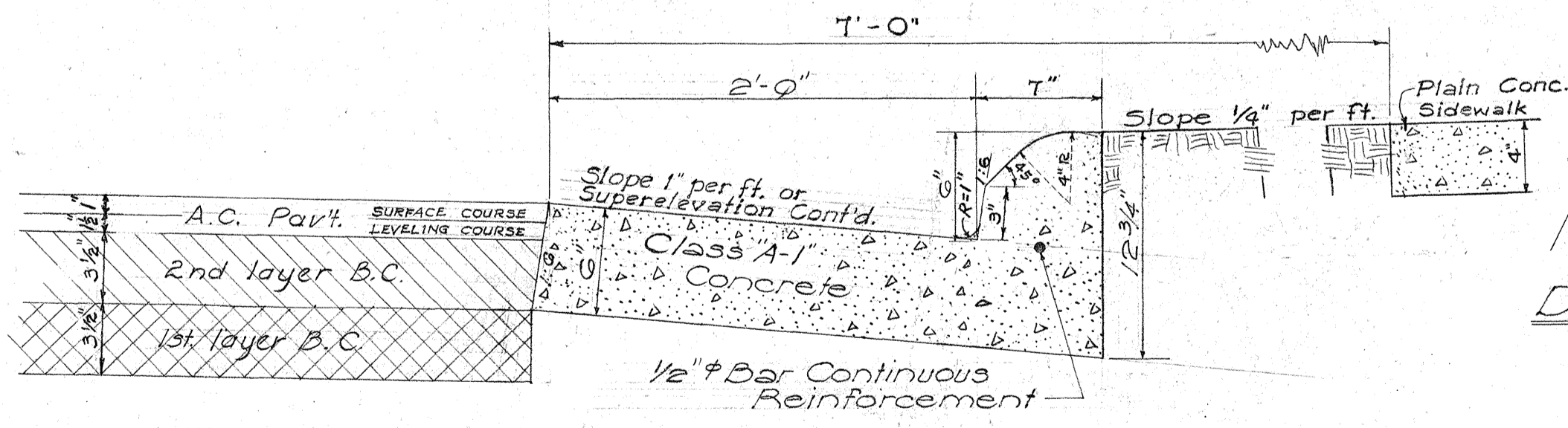


**GENERAL NOTES ON PAVEMENT AND BASE COURSE**

- (1) Pavement shall be Asphalt Concrete of 2 1/2" compacted thickness laid in two layers consisting of a 1 1/2" compacted thickness Asphalt Concrete leveling course, Mix III for the bottom layer and a compacted thickness Asphalt Concrete surface course Mix V for the top layer.
- (2) Base Course shall be Waterbound Macadam Base Course of 1" compacted thickness, laid in two layers of 3/2" compacted thickness each and consisting of Mineral Aggregate (Coarse Rock No. 2 and Filler (1/2" to No. 100)). Both above Courses subject to Specifications and Special Provisions.



NOTE: For detail and spacing of Recess See Detail of Median Strip Curb - Type "A"



DATE: \_\_\_\_\_  
DESIGNED BY: \_\_\_\_\_  
DRAWN BY: \_\_\_\_\_  
TRACED BY: \_\_\_\_\_  
QUANTITIES CHECKED BY: \_\_\_\_\_  
CHECKED BY: \_\_\_\_\_  
ORIGINAL PLAN NO. \_\_\_\_\_  
NOTE BOOK NO. \_\_\_\_\_

TERRITORIAL HIGHWAY DEPARTMENT  
TERRITORY OF HAWAII  
**TYPICAL SECTIONS**  
KAILUA ROAD  
PROJECT No. 3 230(2)  
& W.D.R. 9 (2)  
Scales: As noted Aug. 10, 40