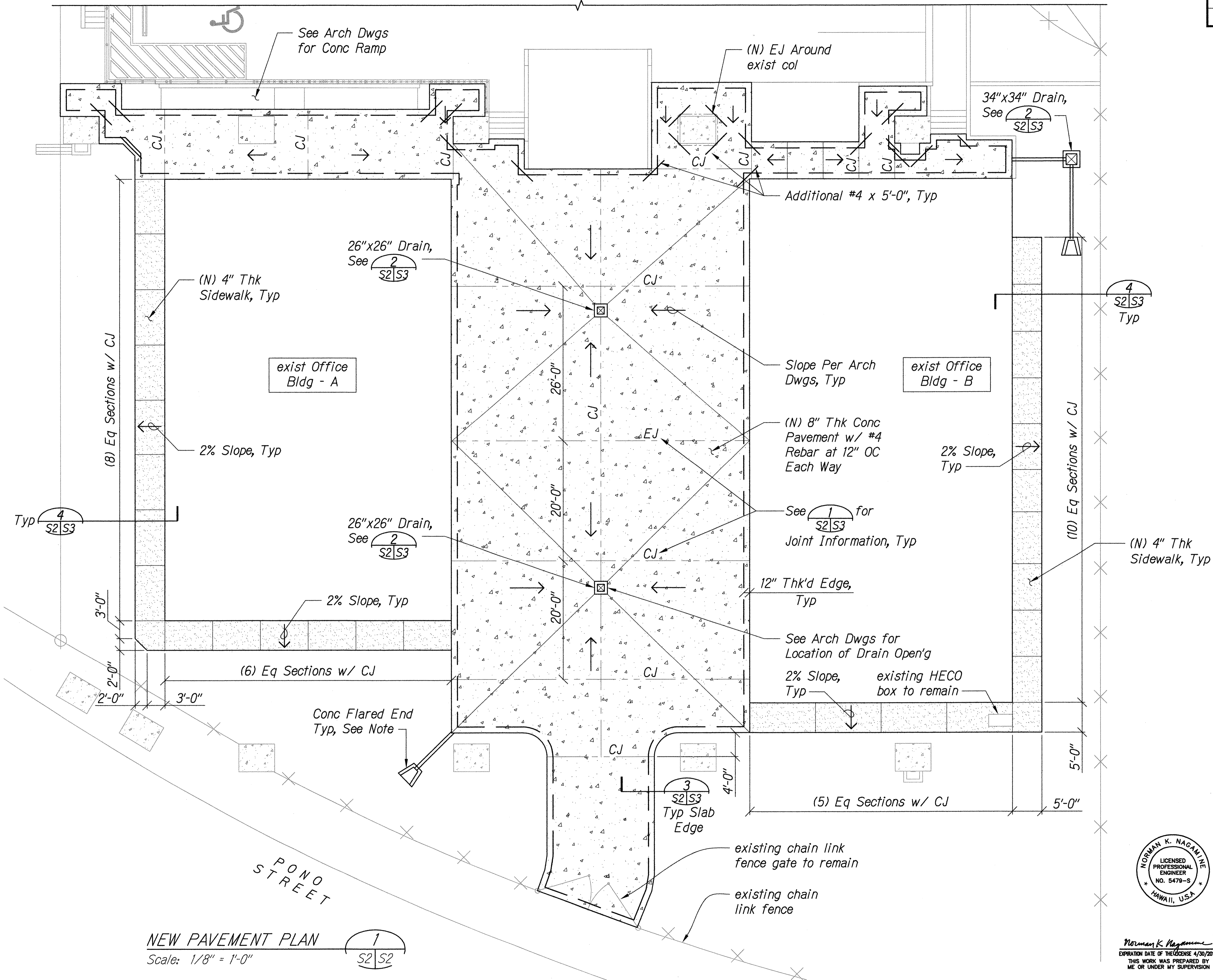
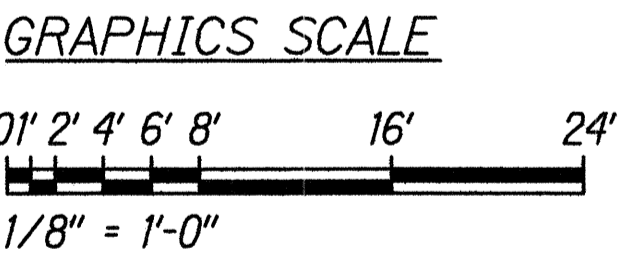




FED. ROAD DIST. NO.	STATE	PROJ. NO.	FISCAL YEAR	SHEET NO.	TOTAL SHEETS
HAWAII	HAW.	HWY-0-02-08R	2016	47	69



- Notes:
- Concrete flared end shall follow HDOT Standard Plans 2008 Drawing Standard Plan H-24, Flared End Section for Culverts, Type A for a 12" pipe diameter.
  - Concrete flared end shall be cast-in place.



SURVEY PLOTTED BY	DATE
DRAWN BY	
CHECKED BY	
NOTED BY	
ORIGINAL PLAN	
NOTE BOOK	
No.	

NEW PAVEMENT PLAN  
 Scale: 1/8" = 1'-0"



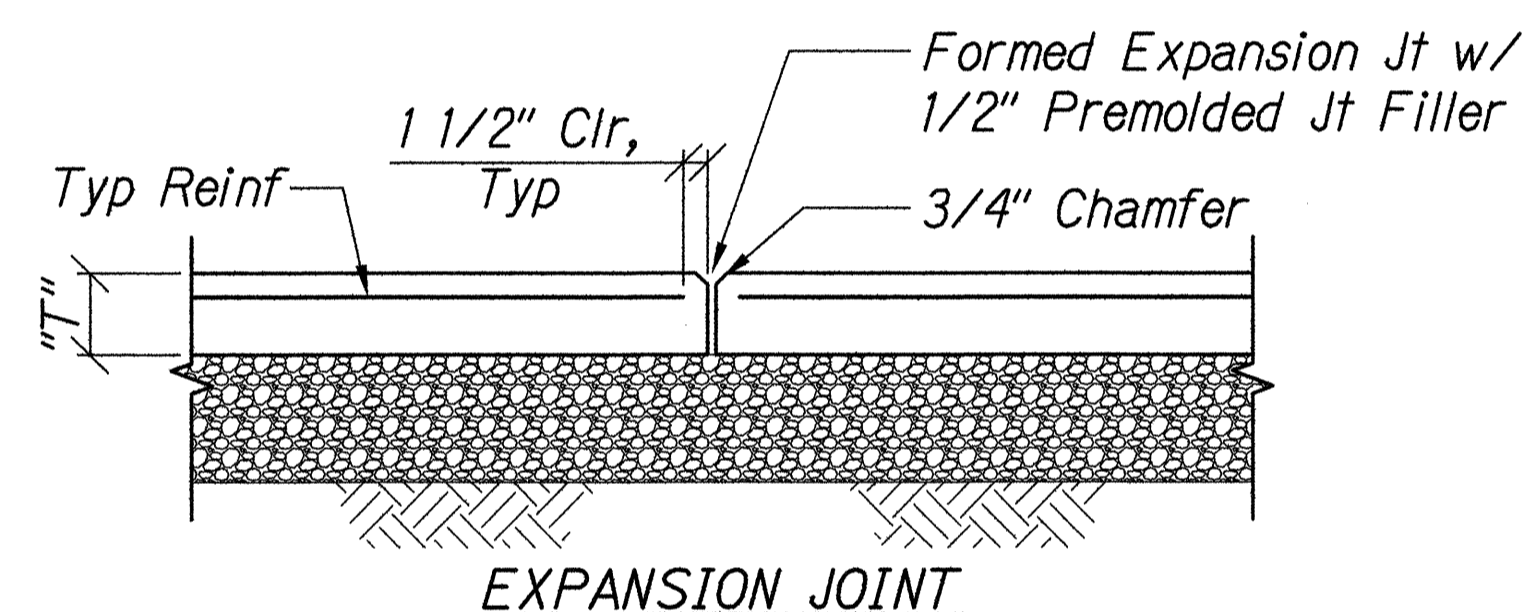
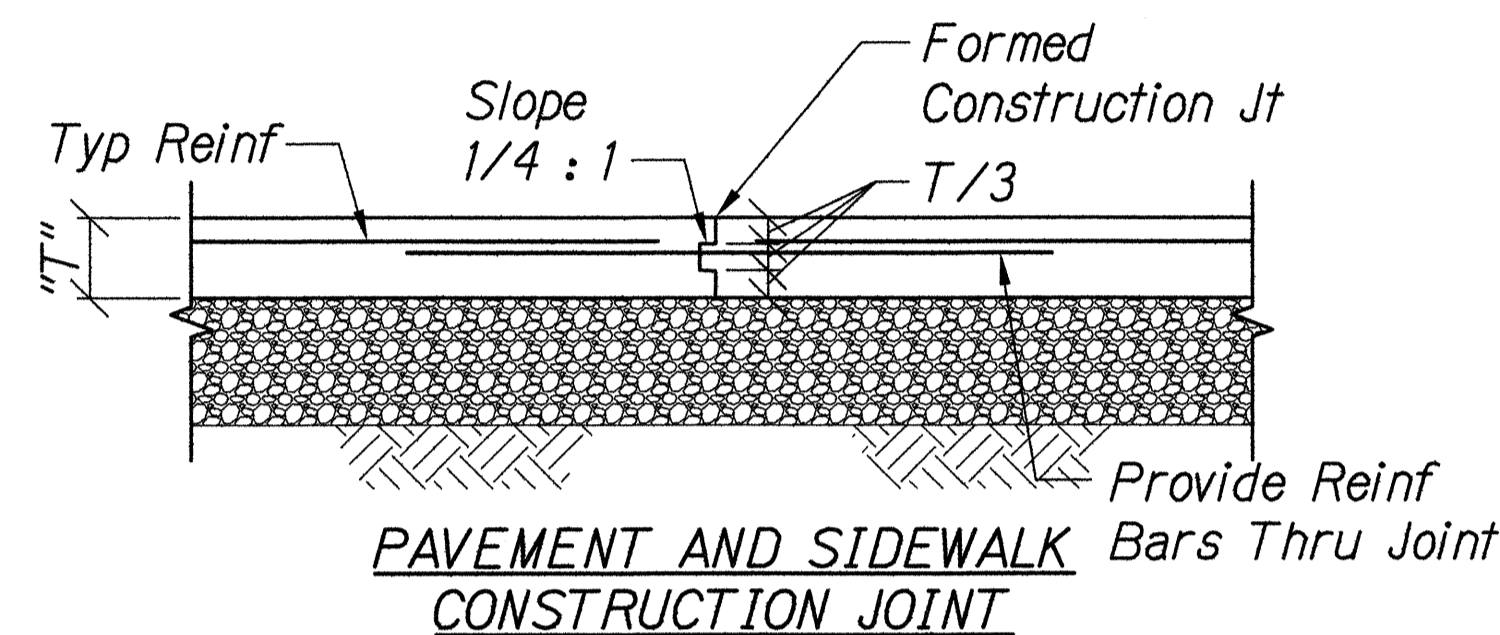
STATE OF HAWAII  
 DEPARTMENT OF TRANSPORTATION  
 HIGHWAYS DIVISION

**NEW PAVEMENT PLAN**

MOTOR VEHICLE SAFETY OFFICE  
 RENOVATION  
 Project No. HWY-0-02-08R  
 Scale: As Noted Date: April, 2016

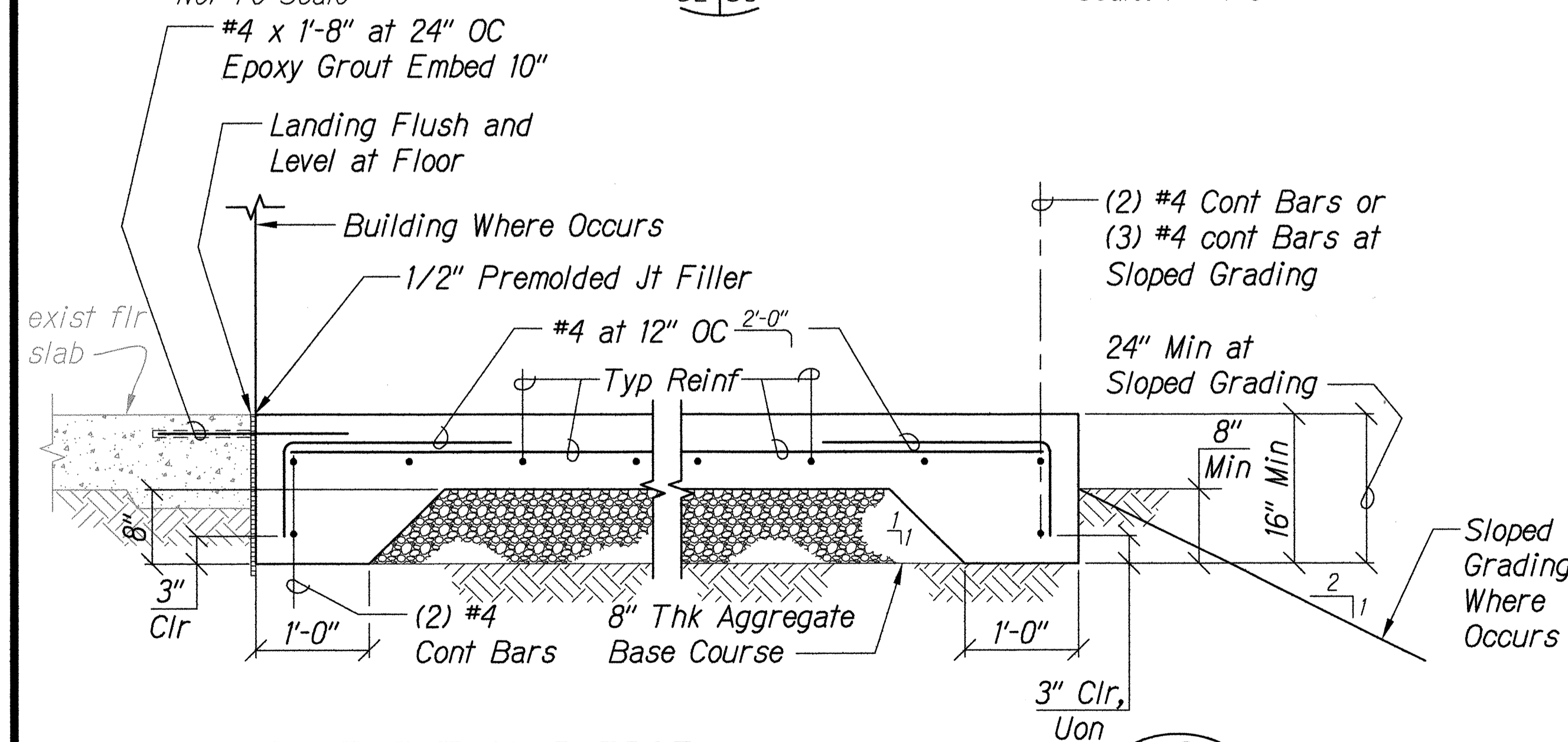
SHEET No. S2 OF 69 SHEETS

FED. ROAD DIST. NO.	STATE	PROJ. NO.	FISCAL YEAR	SHEET NO.	TOTAL SHEETS
HAWAII	HAW.	HWY-0-02-08R	2016	48	69

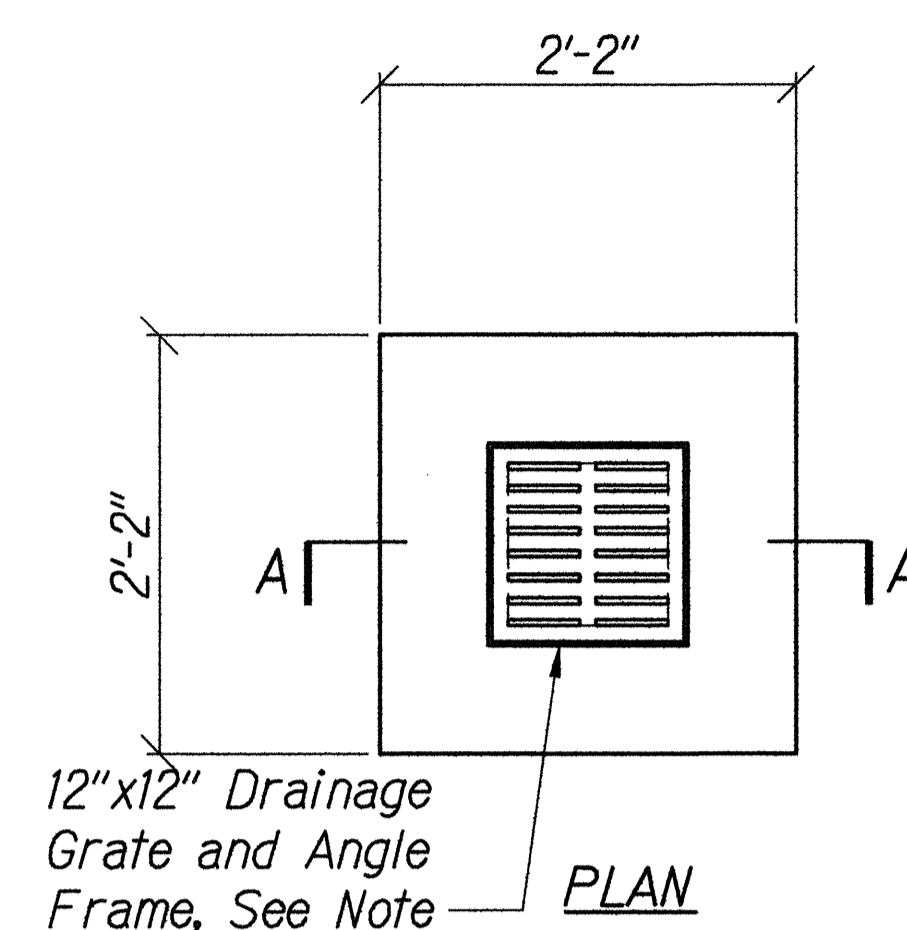


### PAVEMENT JOINTS

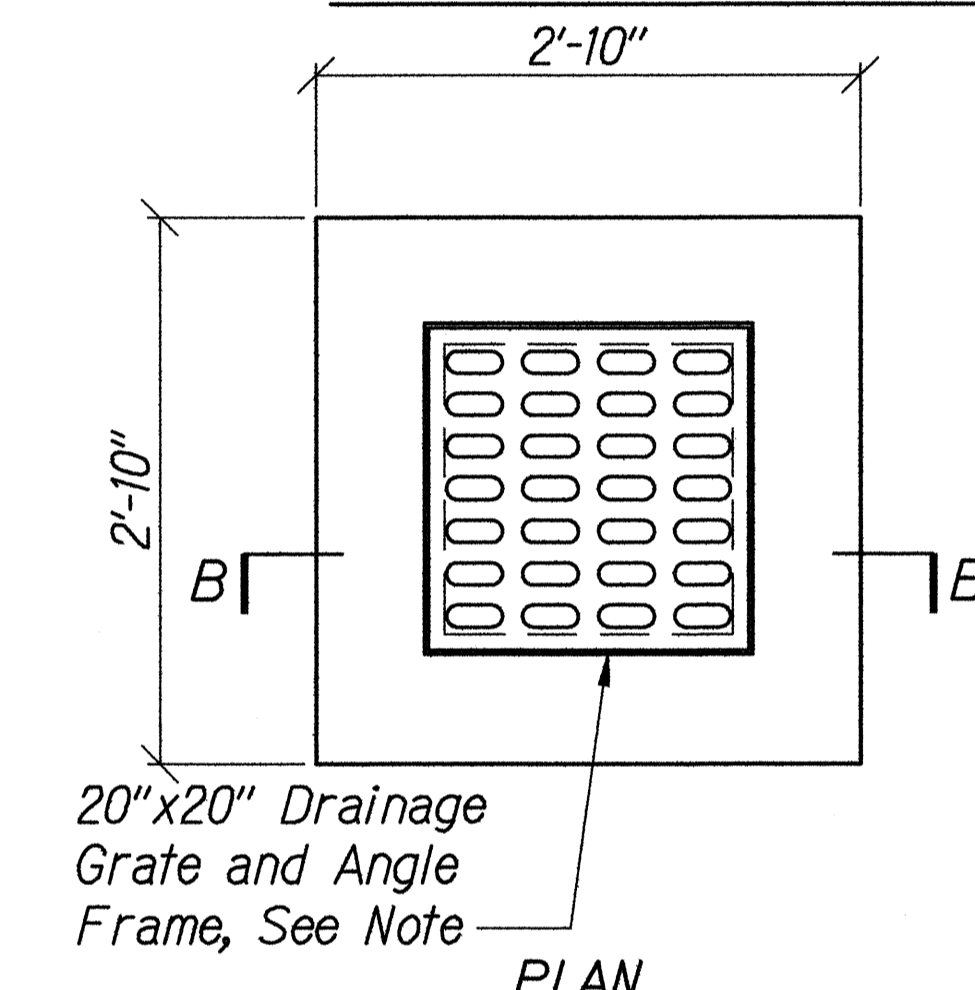
Not To Scale



Scale: 1" = 1'-0"



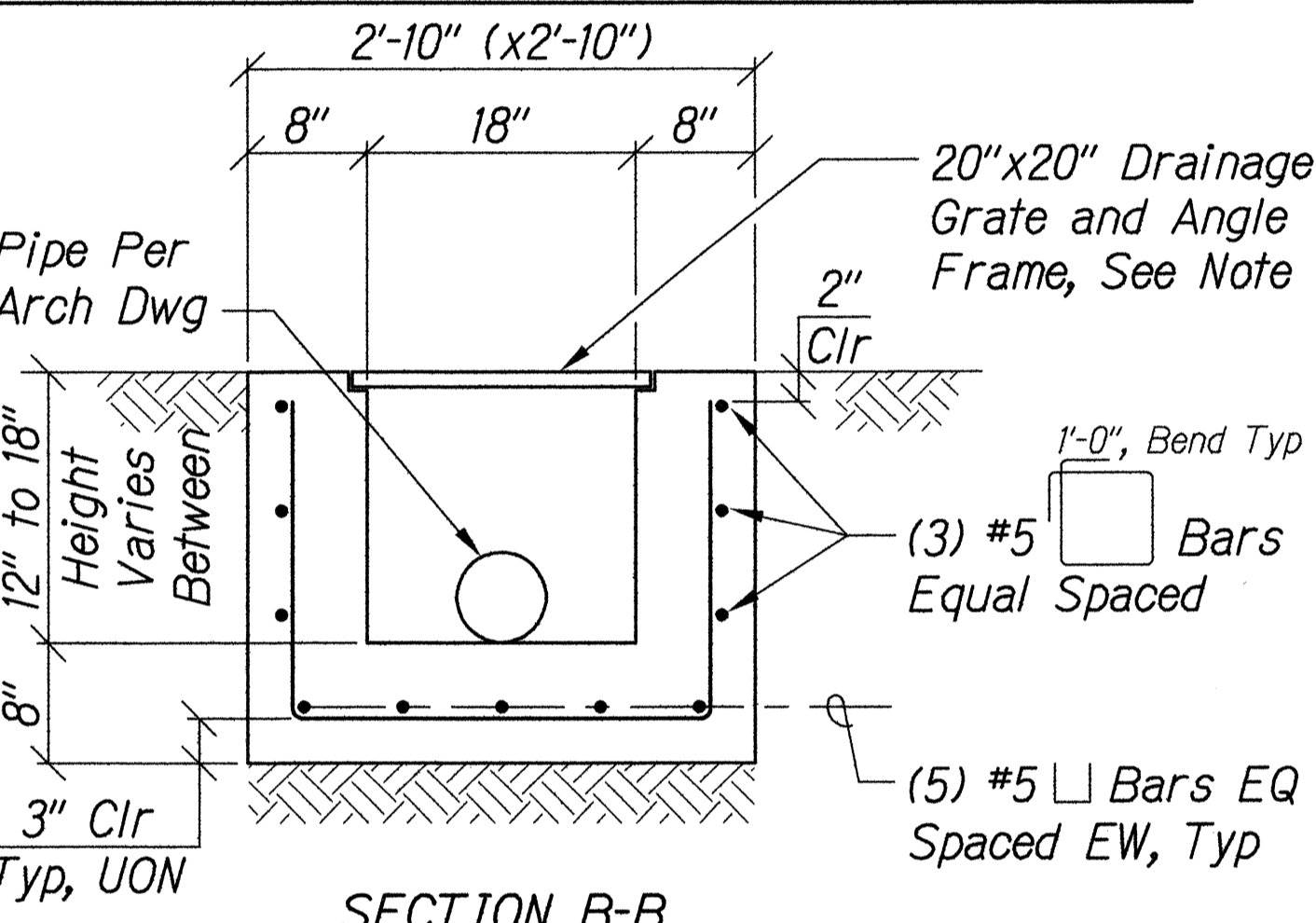
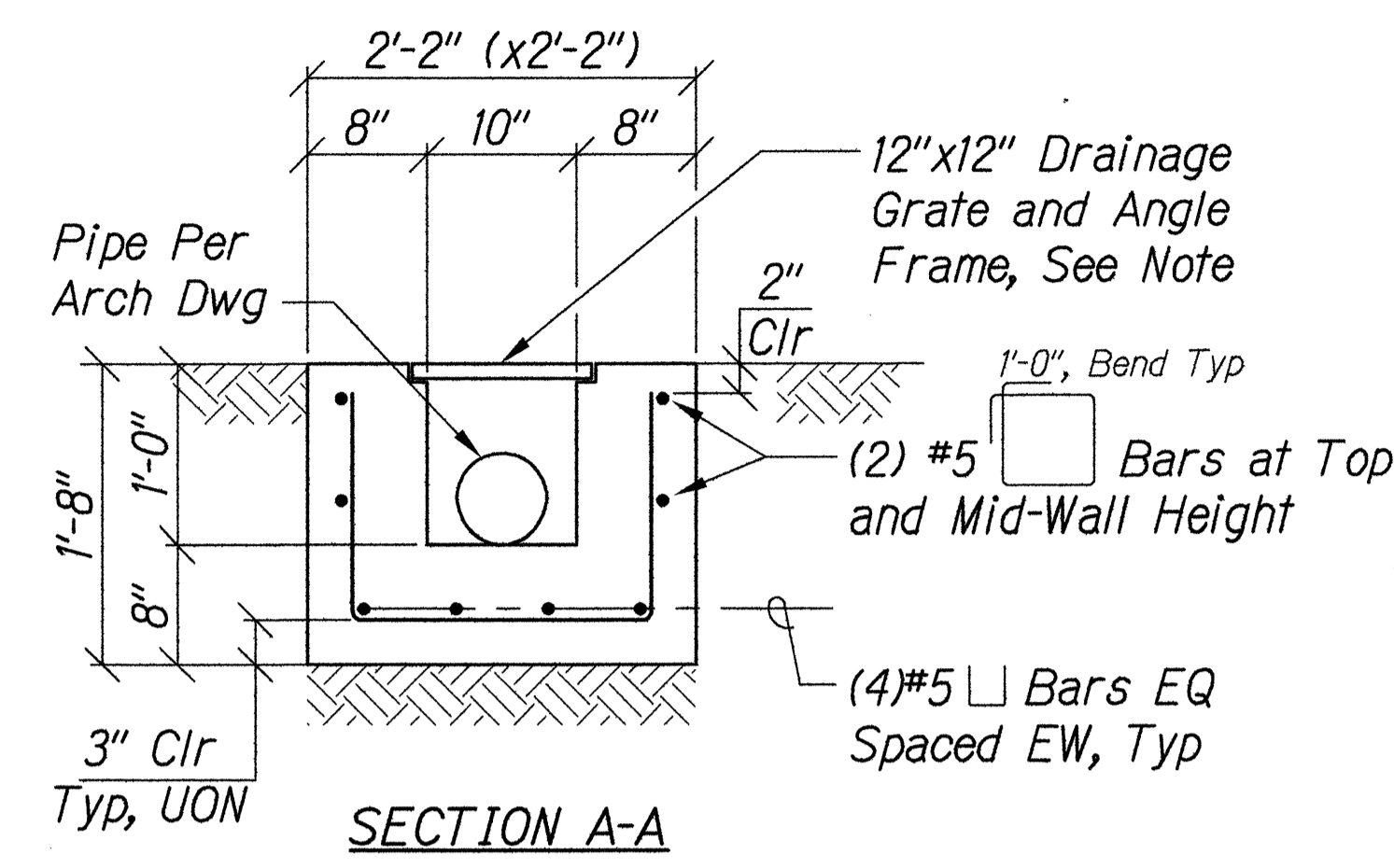
Scale: 1" = 1'-0"



Scale: 1" = 1'-0"

### CONCRETE DRAINS

Scale: 1" = 1'-0"



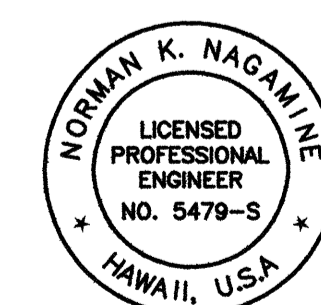
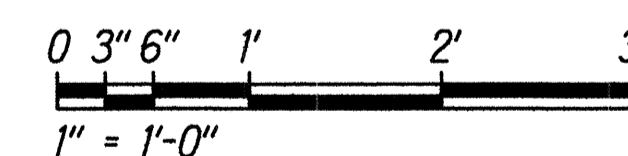
### Note:

- 12"x12" drainage grate shall be Neenah R-4441-1, Type Q or pre-approved equal.
- Angle frame shall be Neenah R-4899 or pre-approved equal.
- Drainage grate and angle frame shall be supplied by the same manufacturer.

### Note:

- 20"x20" drainage grate shall be Neenah R-4720, Type C or pre-approved equal.
- Angle frame shall be Neenah R-4899 or pre-approved equal.
- Drainage grate and angle frame shall be supplied by the same manufacturer.

### GRAPHICS SCALE



STATE OF HAWAII  
DEPARTMENT OF TRANSPORTATION  
HIGHWAYS DIVISION

**DETAILS**

MOTOR VEHICLE SAFETY OFFICE  
RENOVATION  
Project No. HWY-0-02-08R  
Scale: As Noted Date: April, 2016

SHEET No. S3 OF 69 SHEETS

Norman K. Nagamine  
EXPIRATION DATE OF THE LICENSE 4/30/2018  
THIS WORK WAS PREPARED BY ME OR UNDER MY SUPERVISION