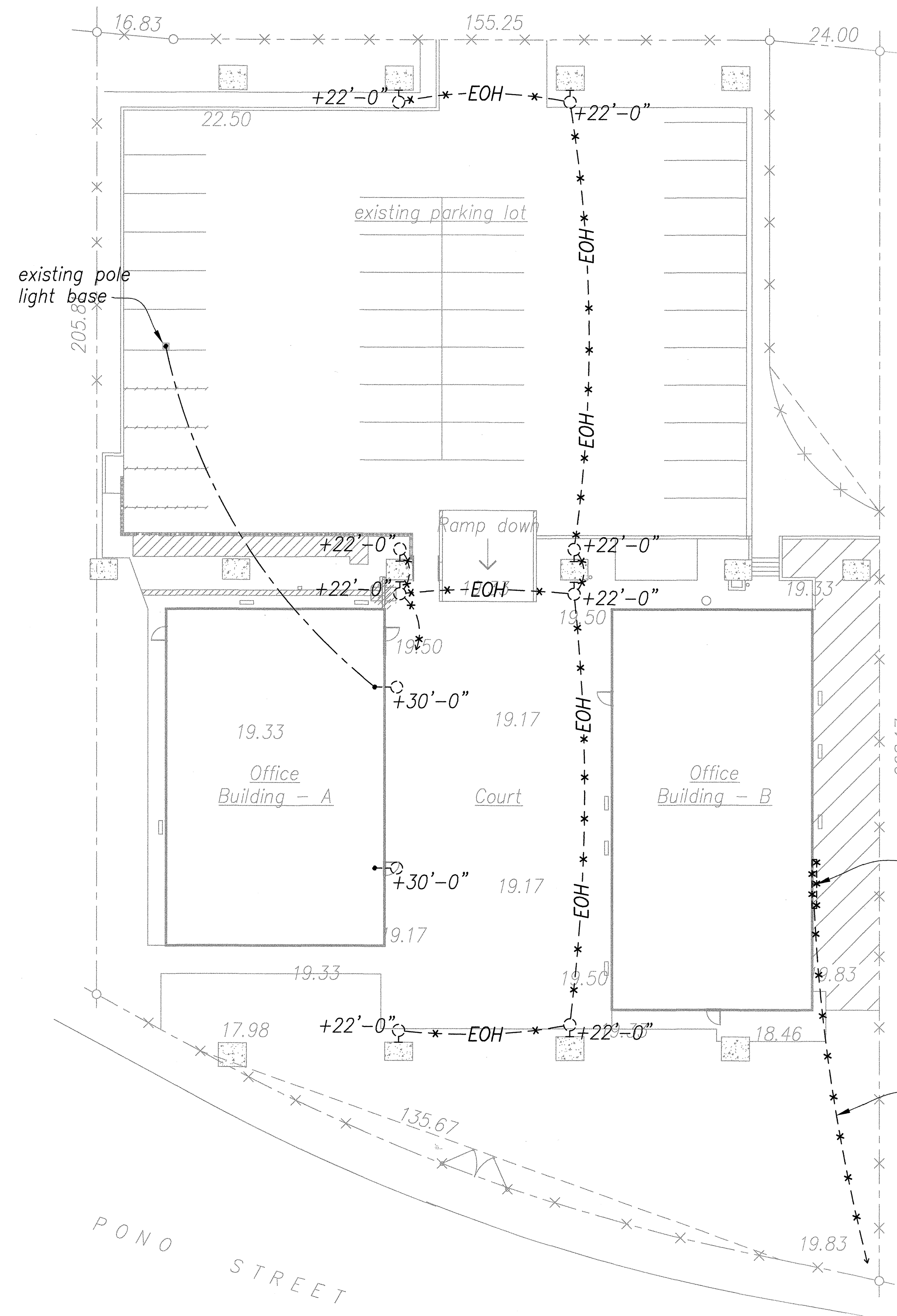
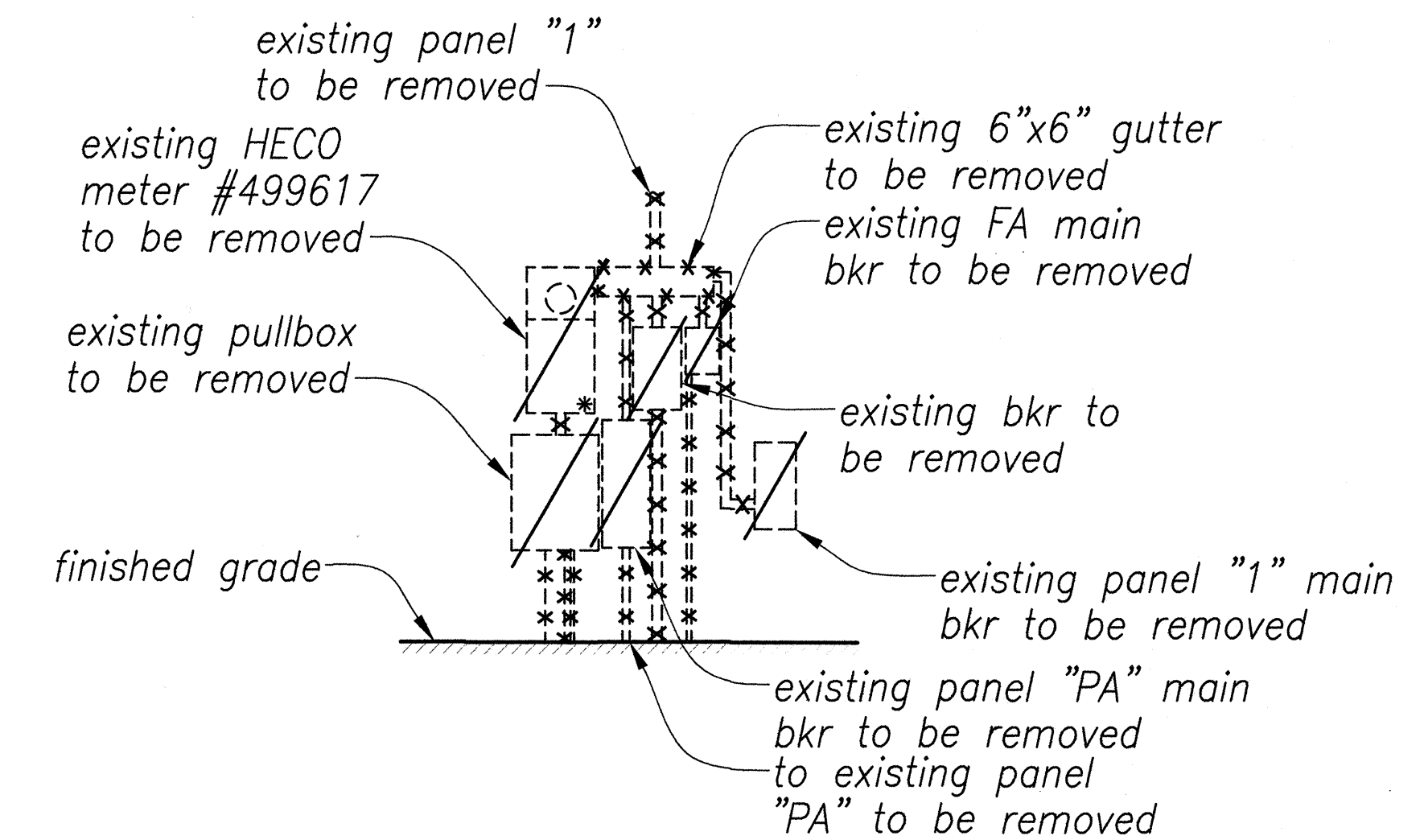


FED. ROAD DIST. NO.	STATE	PROJ. NO.	FISCAL YEAR	SHEET NO.	TOTAL SHEETS
HAWAII	HAW.	HWY-0-02-08	2014	48	57



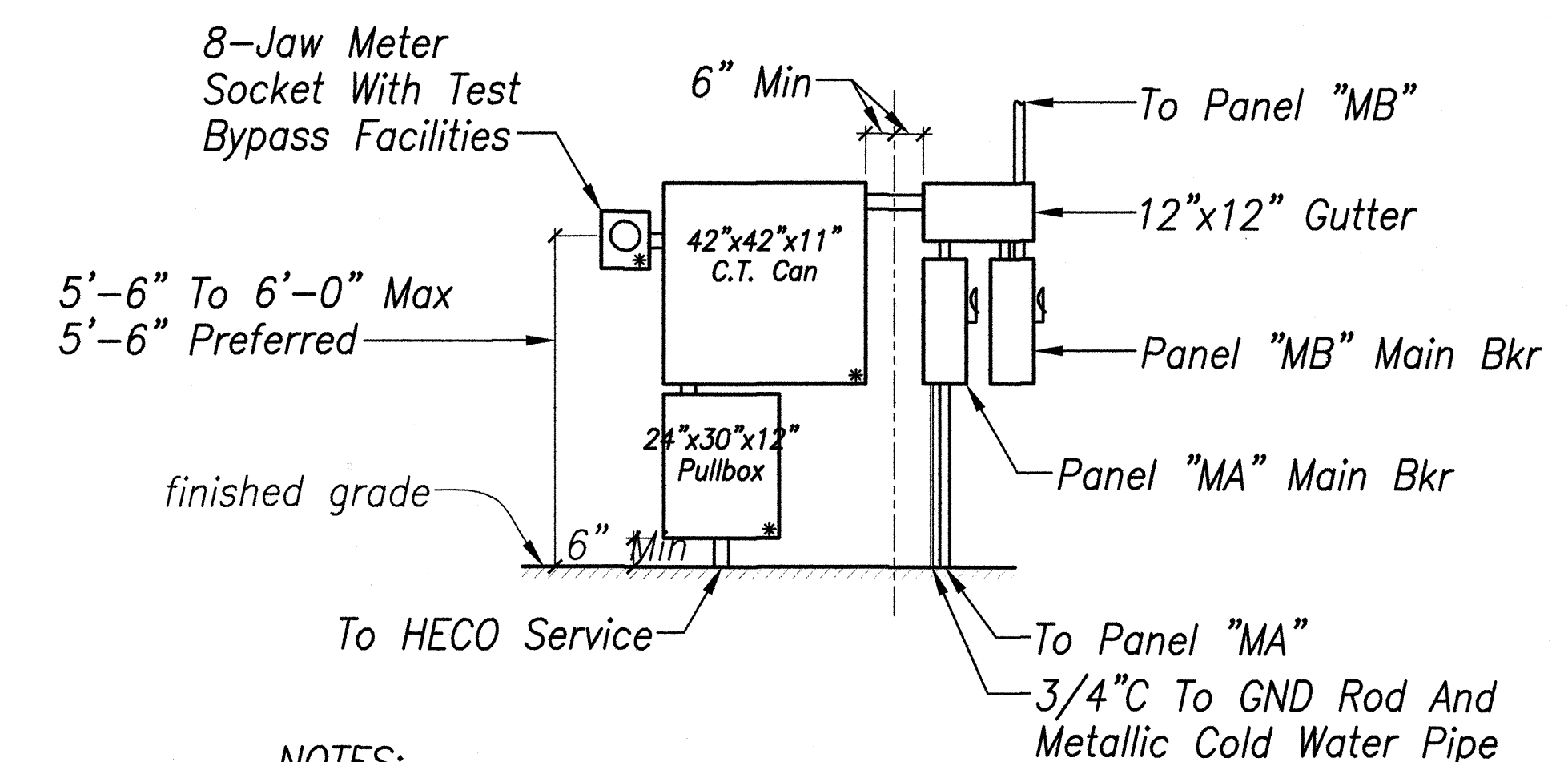
ELECTRICAL DEMOLITION SITE PLAN
Scale - 1/16" = 1'-0"



**ELECTRICAL SERVICE EQUIPMENT
ELEVATION - DEMOLITION WORK**

Scale - 3/16" = 1'-0"

A
E1.1 | E1.1



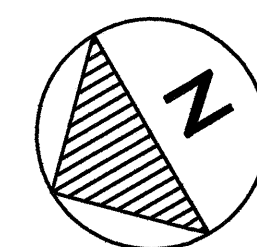
NOTES:

1. All Enclosures Shall Be Nema 3R.
2. * Indicates Sealable Enclosure.
3. Provide Permanent Identification Labels For All Meter Sockets To Identify The Unit Or Space Served.
4. Provide A Minimum Of 4 Feet Clear And Level Workspace Clearance In Front Of Metering And Service Equipment.

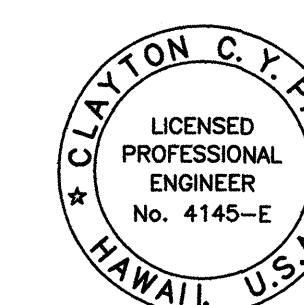
**ELECTRICAL SERVICE EQUIPMENT
ELEVATION - NEW WORK**

Scale - 3/16" = 1'-0"

B
E1.1 | E1.1



ORIGINAL PLAN	DATE
DRAWN BY	
DESIGNED BY	
CHECKED BY	
NO.	



THIS WORK WAS PREPARED BY ME OR UNDER MY SUPERVISION

STATE OF HAWAII
DEPARTMENT OF TRANSPORTATION
HIGHWAYS DIVISION

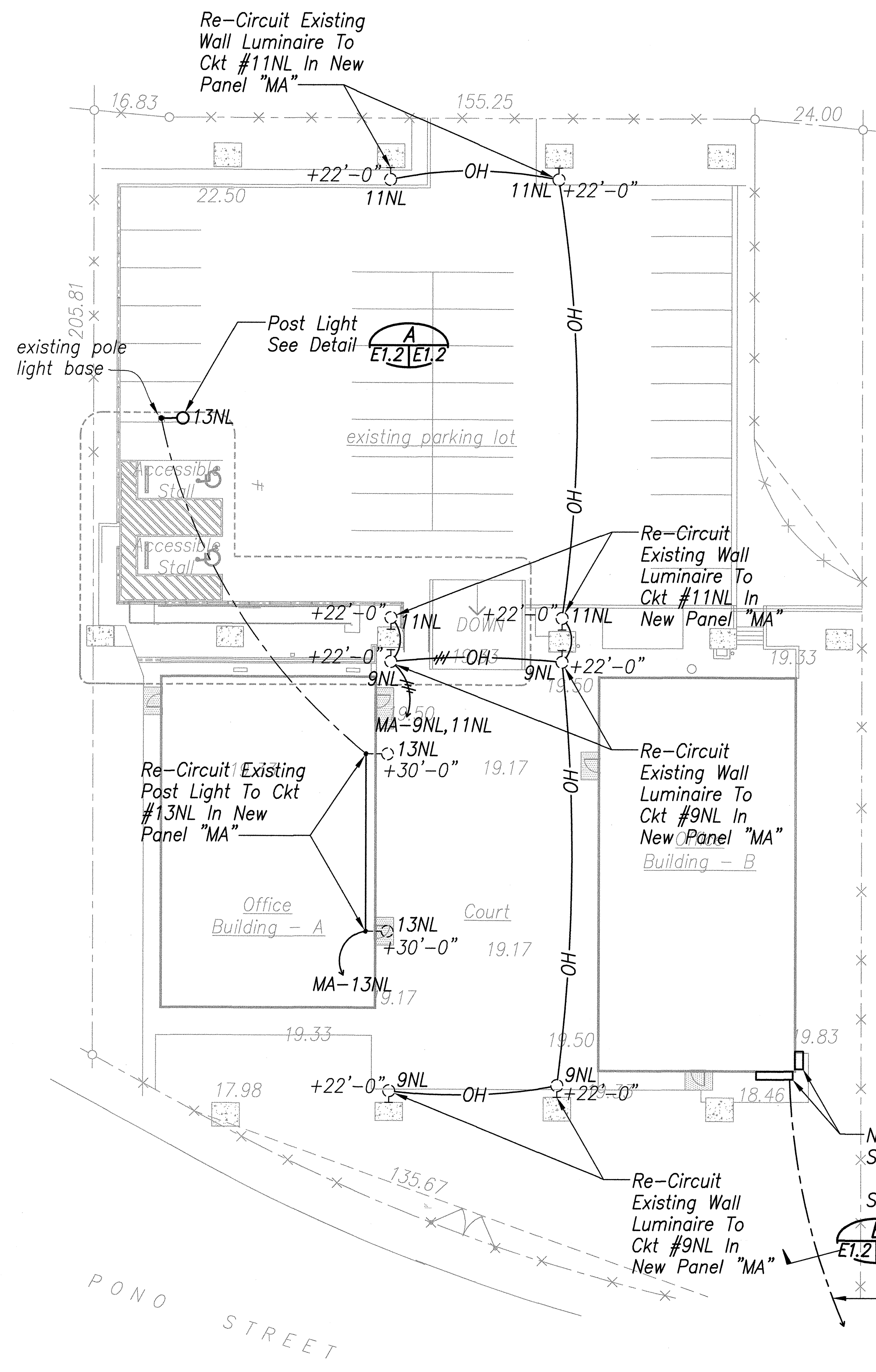
**ELECTRICAL DEMOLITION SITE PLAN
ELECTRICAL SERVICE EQUIPMENT
ELEVATION - DEMOLITION & NEW WORK**

**MOTOR VEHICLE SAFETY OFFICE
RENOVATION**

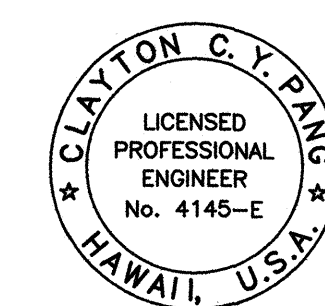
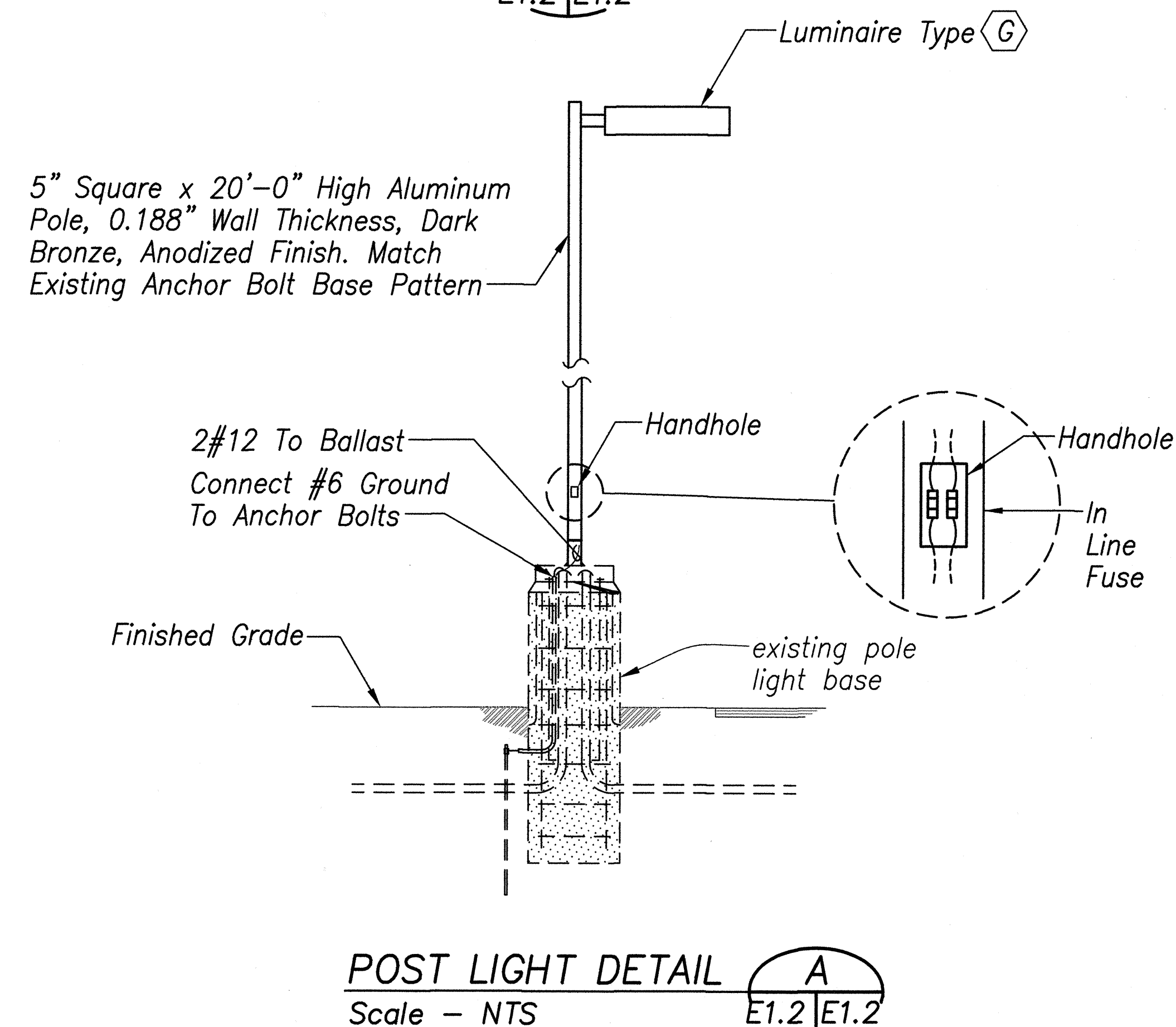
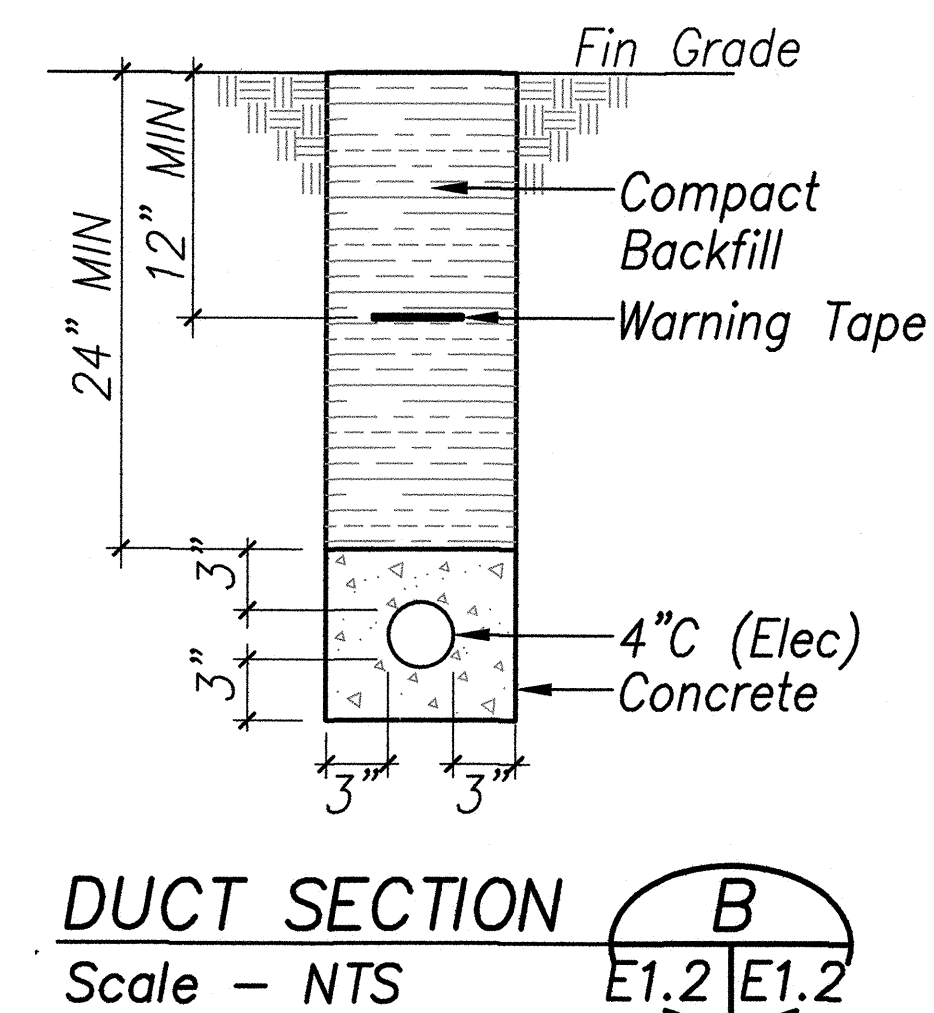
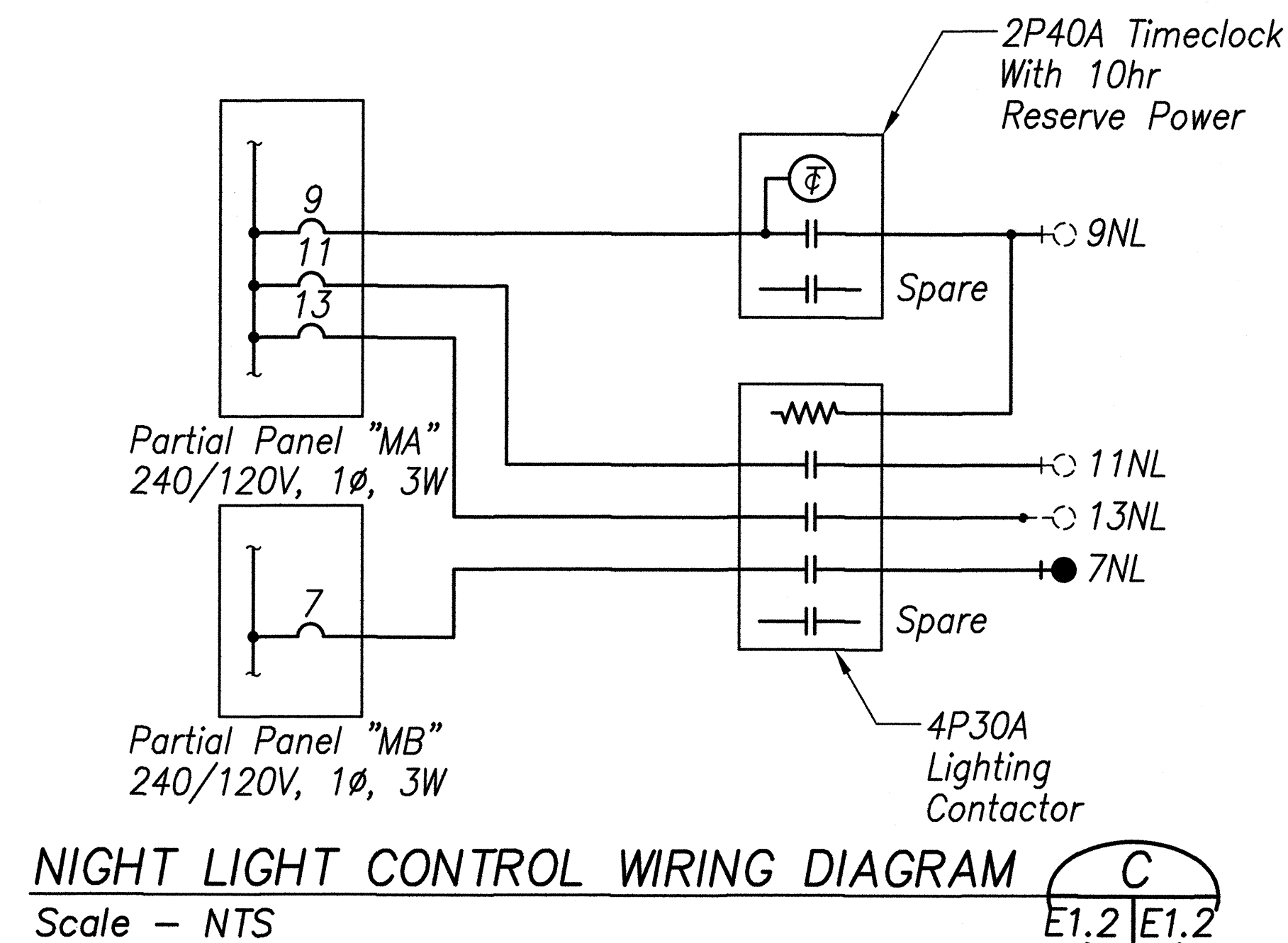
Project No. HWY-0-02-08
Scale: As Noted Date: April 2014

SHEET No. E1.1 OF 57 SHEETS

FED. ROAD DIST. NO.	STATE	PROJ. NO.	FISCAL YEAR	SHEET NO.	TOTAL SHEETS
HAWAII	HAW.	HWY-0-02-08	2014	49	57



ELECTRICAL SITE PLAN **1**
Scale - 1/16" = 1'-0" E1.2|E1.2



STATE OF HAWAII
DEPARTMENT OF TRANSPORTATION
HIGHWAYS DIVISION

ELECTRICAL SITE PLAN, POST LIGHT DETAIL, DUCT SECTION, NIGHT LIGHT CONTROL WIRING DIAGRAM

MOTOR VEHICLE SAFETY OFFICE RENOVATION

Project No. HWY-0-02-08

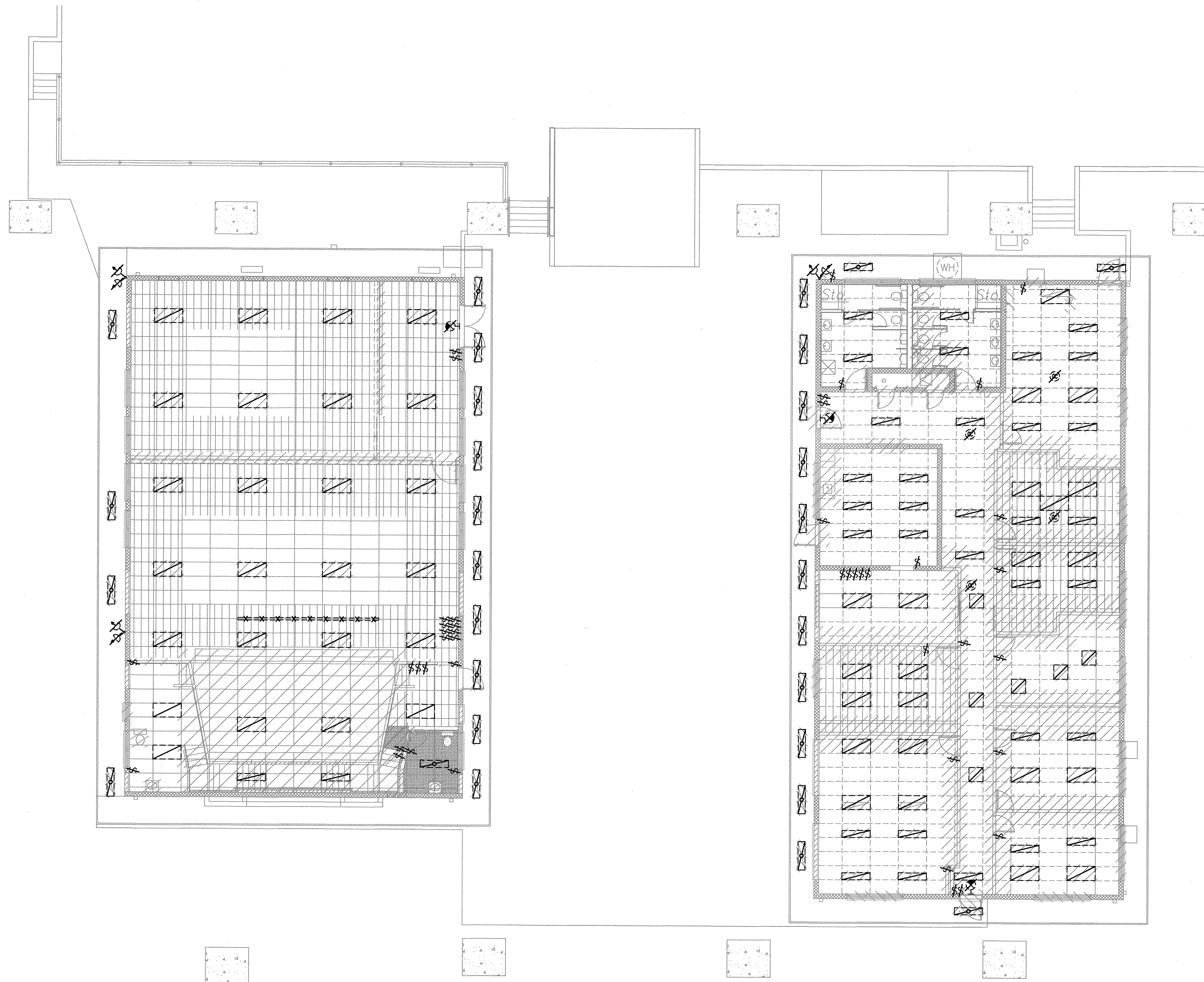
Scale: As Noted Date: April 2014

SHEET No. E1.2 OF 57 SHEETS

FED. ROAD DIST. NO.	STATE	PROJ. NO.	FISCAL YEAR	SHEET NO.	TOTAL SHEETS
HAWAII	HAW.	HWY-0-02-08	2014	50	57

DEMOLITION NOTES

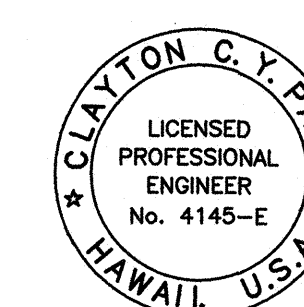
- Existing Plans Do Not Indicate Complete Existing Wiring Conditions. Contractor Shall Verify Existing Conditions Prior To Start Of Work.
- Before Any Wiring Is Cut, Contractor Shall Verify Usage Of Wiring To Be Cut To Assure That Services Required Are Not Discontinued. Provide Additional Wiring Devices And Other Accessories To Ensure Continuity Of Service To Other Parts Of Installation To Remain.
- Remove All Existing Wiring To Not Remain In Service.
- Remove All Conduits No Longer Required.
- Phase Work To Assure Continuity Of Electrical, Telephone And Signal Services To Parts Of Facilities That Will Remain In Use.
- Remove All Existing Lighting Fixtures, Receptacles And Switches Indicated To Be Removed Or No Longer Required. Blank Outlets And Plug All Holes In Boxes And Cabinets.
- Deliver All Salvageable Material As Determined By Engineer At No Additional Cost To Owner. Pack Material In Boxes. Coil All Cables And Tie.
- Abandon Conduits Below Grade No Longer Required. Pull Out All Wires In Abandoned Conduits.
- Return All Removed Light Fixtures To Owner. Deliver Items And Stack In Location As Determined By Engineer. Dispose Of Fixtures That Are Not Retained.



BUILDING 'A'
LIGHTING DEMOLITION PLAN 1
Scale - 1/8" = 1'-0" E2.1 | E2.1

BUILDING 'B'
LIGHTING DEMOLITION PLAN 2
Scale - 1/8" = 1'-0" E2.1 | E2.1

ORIGINAL PLAN	DATE
DESIGNED BY	DATE
NOTED BY	DATE
CHECKED BY	DATE
NO.	



THIS WORK WAS PREPARED BY
ME OR UNDER MY SUPERVISION

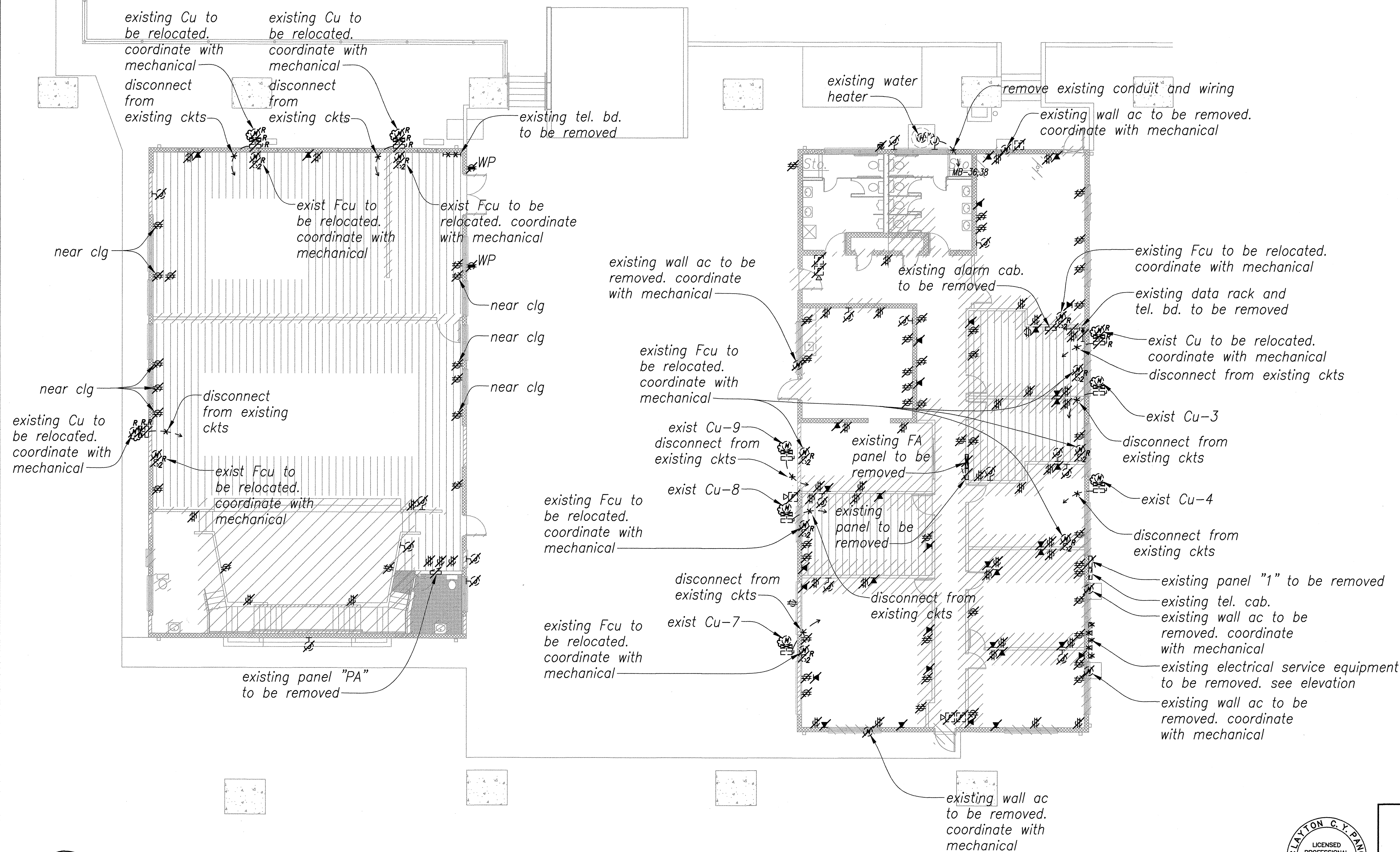
STATE OF HAWAII
DEPARTMENT OF TRANSPORTATION
HIGHWAYS DIVISION

**BUILDING 'A' & 'B' LIGHTING
DEMOLITION PLANS, DEMOLITION NOTES**

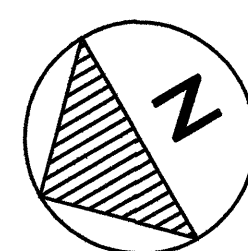
MOTOR VEHICLE SAFETY OFFICE
RENOVATION
Project No. HWY-0-02-08
Scale: As Noted Date: April 2014

SHEET No. E2.1 OF 57 SHEETS

FED. ROAD DIST. NO.	STATE	PROJ. NO.	FISCAL YEAR	SHEET NO.	TOTAL SHEETS
HAWAII	HAW.	HWY-0-02-08	2014	51	57



SURVEY PLOTTED BY	DATE
DRAWN BY	
DESIGNED BY	
QUANTITIES BY	
CHECKED BY	
ORIGINAL PLAN	No.
NOTE BOOK	

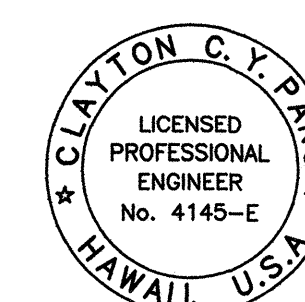


**BUILDING 'A' POWER
AND SIGNAL DEMOLITION PLAN**
Scale - 1/8" = 1'-0"

1
E2.2 | E2.2

**BUILDING 'B' POWER
AND SIGNAL DEMOLITION PLAN**
Scale - 1/8" = 1'-0"

2
E2.2 | E2.2



THIS WORK WAS PREPARED BY
ME OR UNDER MY SUPERVISION

STATE OF HAWAII
DEPARTMENT OF TRANSPORTATION
HIGHWAYS DIVISION
**BUILDING 'A' & 'B' POWER AND
SIGNAL DEMOLITION PLANS**

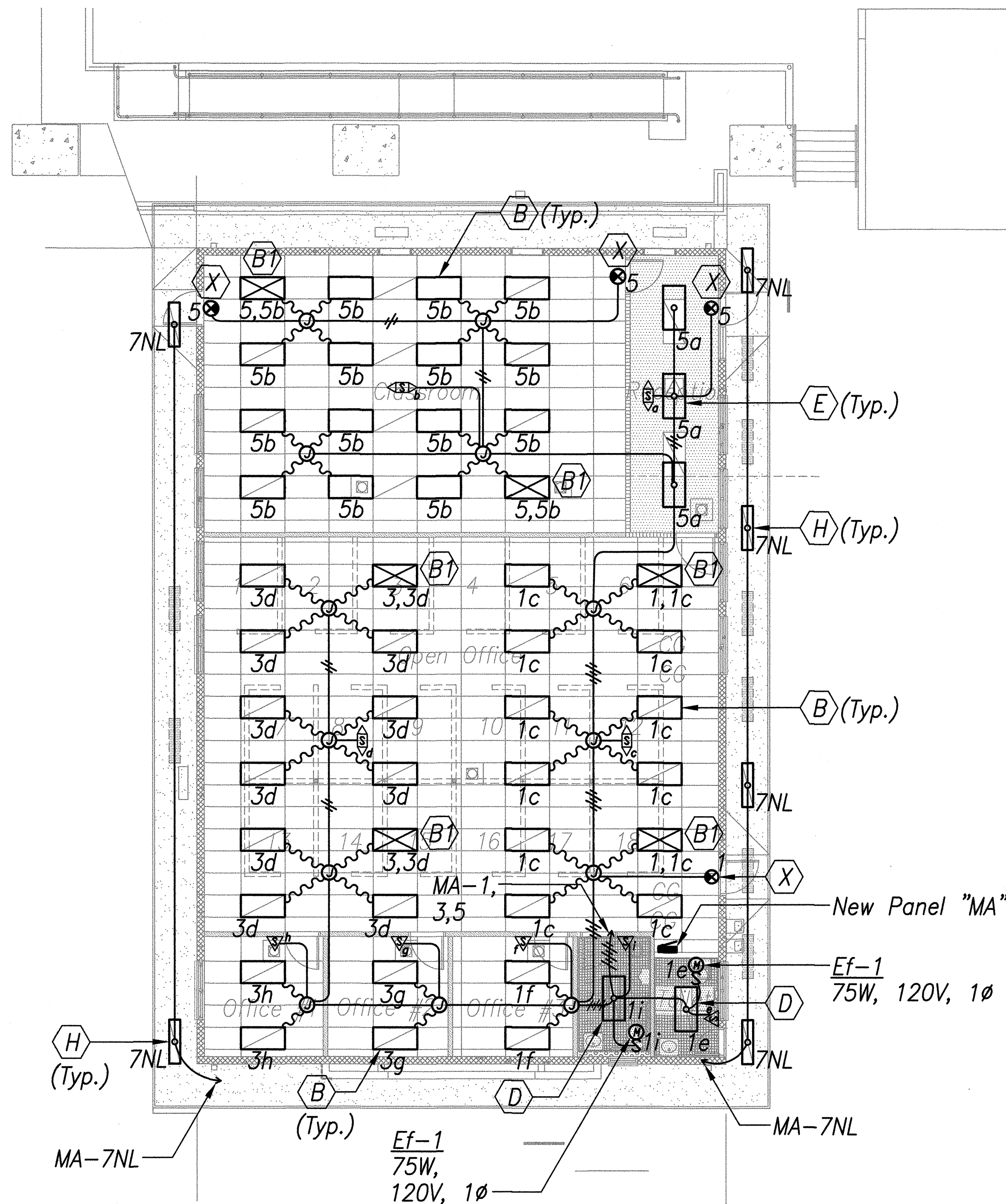
**MOTOR VEHICLE SAFETY OFFICE
RENOVATION**
Project No. HWY-0-02-08
Scale: As Noted Date: April 2014

SHEET No. E2.2 OF 57 SHEETS

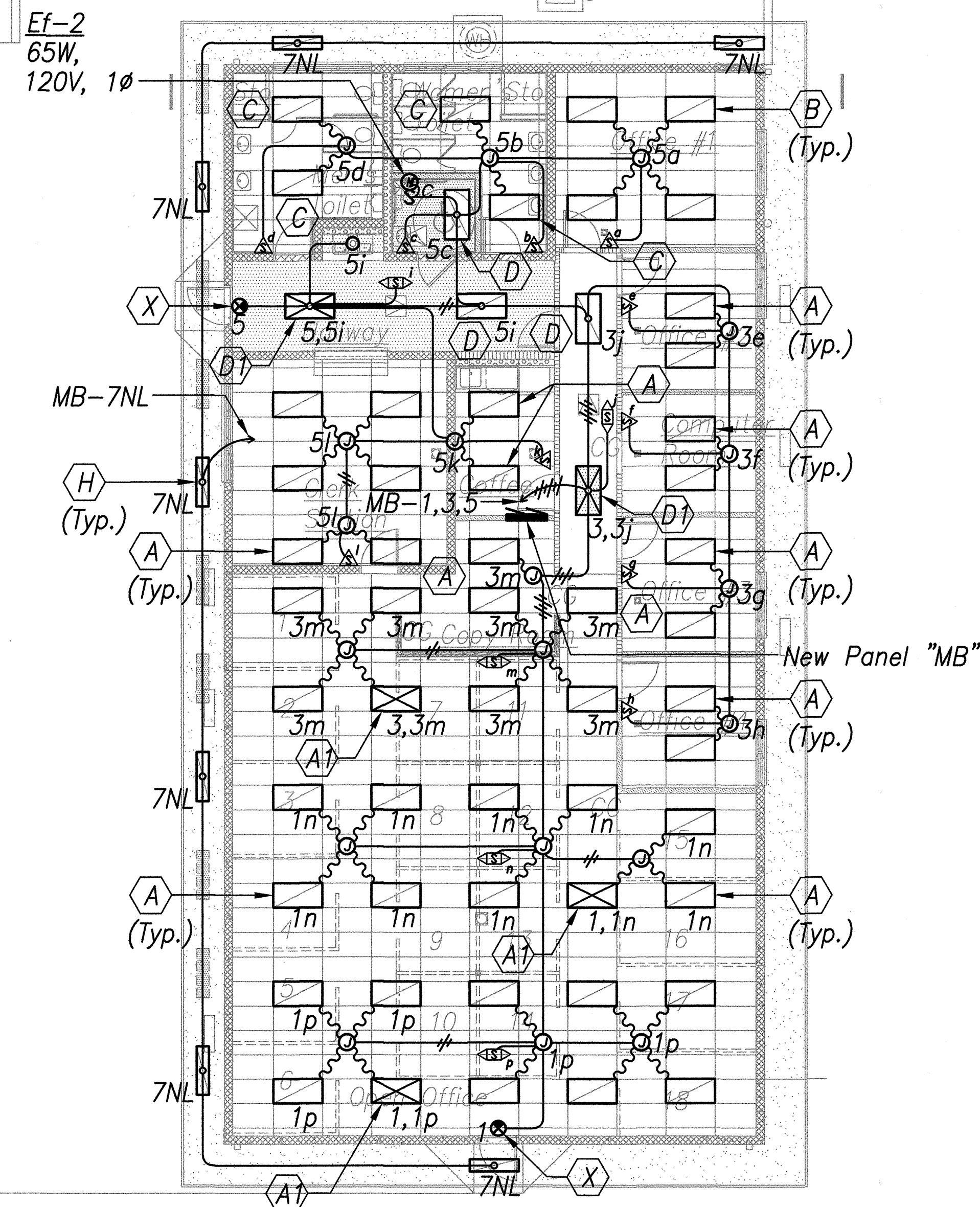
FED. ROAD DIST. NO.	STATE	PROJ. NO.	FISCAL YEAR	SHEET NO.	TOTAL SHEETS
HAWAII	HAW.	HWY-0-02-08	2014	52	57

LUMINAIRE SCHEDULE		
TYPE	LAMP	DESCRIPTION
A	2-28W T8	Columbia STE24-232G-MPO-EPU Or Equal
A1	2-28W T8	Columbia STE24-232G-MPO-EPU-EL Or Equal
B	3-32W T8	Columbia STE24-332G-MPO-EPU Or Equal
B1	3-32W T8	Columbia STE24-332G-MPO-EPU-EL Or Equal
C	2-32W T8	Columbia ST824-232G-FSA12-EPU Or Equal
D	2-32W T8	Columbia ST824-232F-FSA12-EPU Or Equal
D1	2-32W T8	Columbia ST824-232F-FSA12-EPU-EL Or Equal
E	3-32W T8	Columbia ST824-332F-FSA12-EPU Or Equal
F	1-26W CFL	Prescolite SFR6126EB ST372A1 LP26Q430K B6 Or Equal
G	1-150W HPS	Raven RCS-A4-S15-H4-F-Q-DB Or Equal
H	2-32W T8	Columbia WT14-232F-FAA12-EPU
X	LED	Dual-Lite LX-U-R-W-E Or Equal

NOTE: 1. All Fluorescent Luminaires Shall Be Furnished With Program Start Electronic Ballasts With Less Than 10% THD With Full Lumen Output.

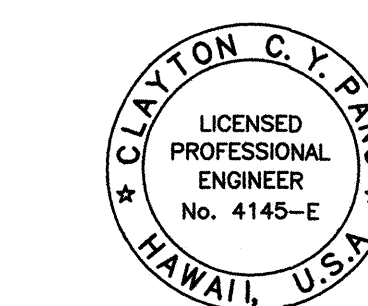
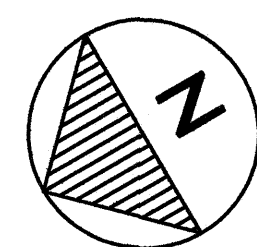


BUILDING 'A'
LIGHTING PLAN - NEW WORK 1
 Scale - 1/8" = 1'-0" E2.3 | E2.3



BUILDING 'B'
LIGHTING PLAN - NEW WORK 2
 Scale - 1/8" = 1'-0" E2.3 | E2.3

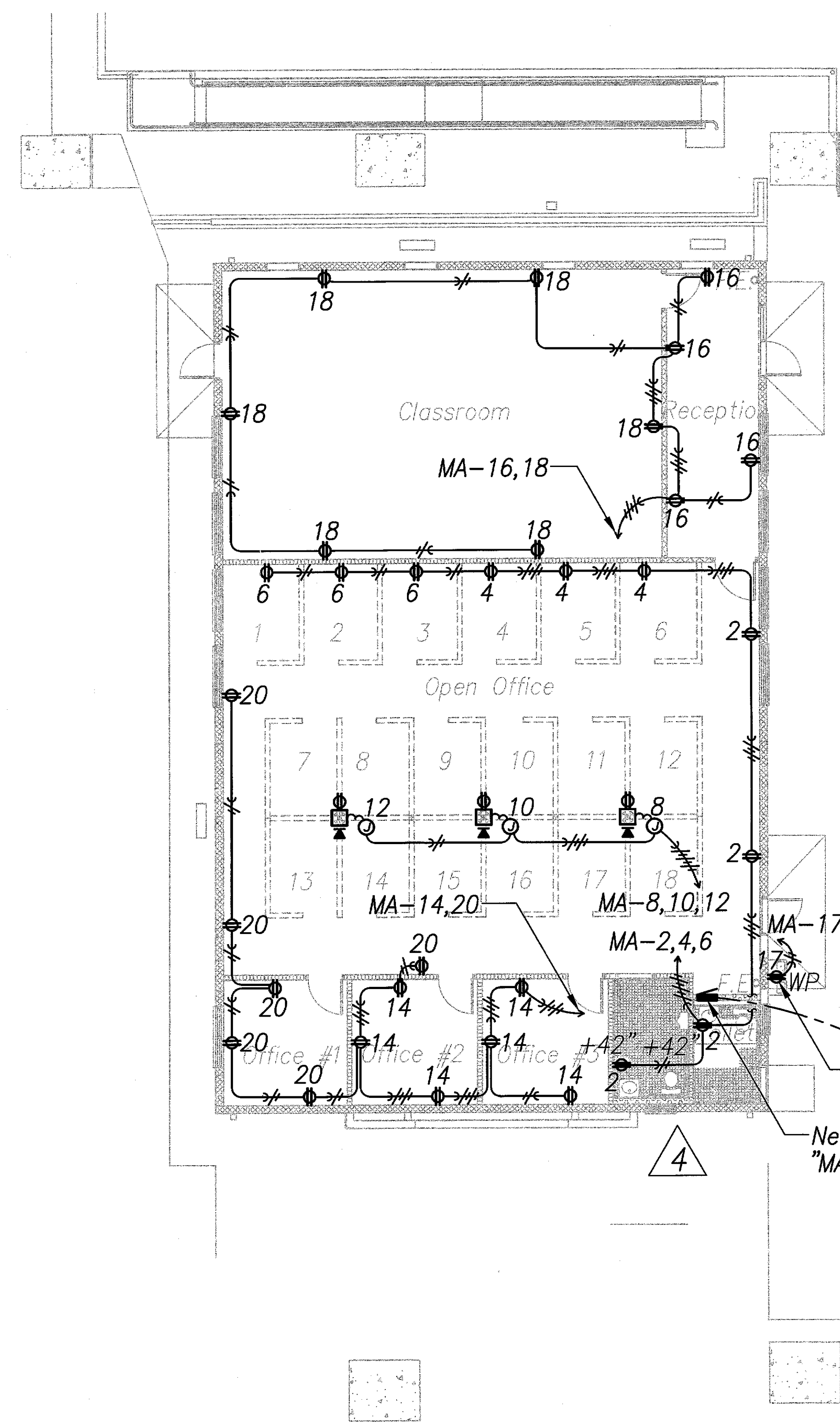
DATE	_____
DESIGNED BY	_____
CHECKED BY	_____
NO.	_____



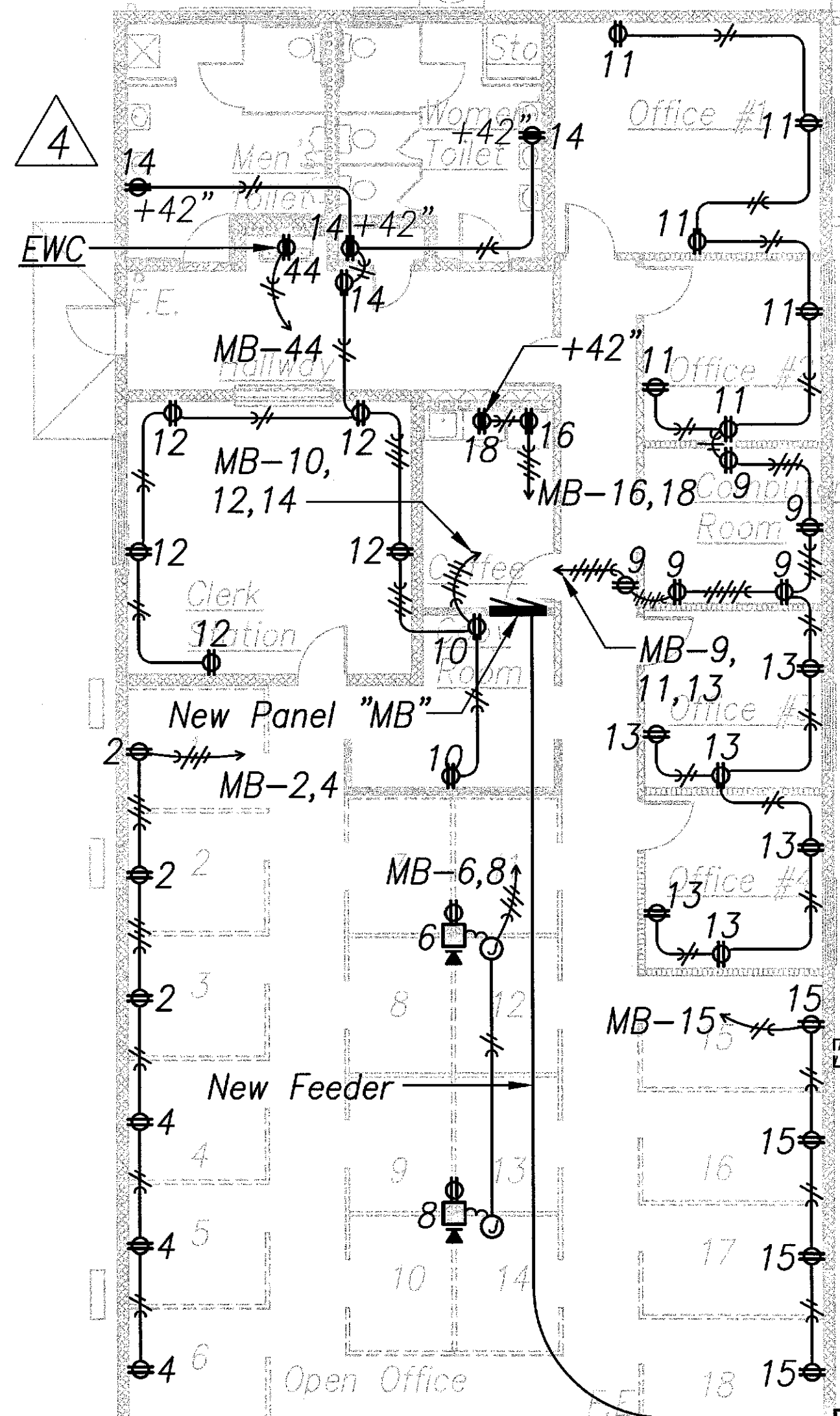
CLAYTON C. Y. PAIG
 LICENSED PROFESSIONAL ENGINEER
 No. 4145-E
 HAWAII, U.S.A.
 EXPIRATION DATE OF THE LICENSE 4/30/2018
 THIS WORK WAS PREPARED BY ME OR UNDER MY SUPERVISION

STATE OF HAWAII
 DEPARTMENT OF TRANSPORTATION
 HIGHWAYS DIVISION
BUILDING 'A' & 'B' LIGHTING
PLANS - NEW WORK
LUMINAIRE SCHEDULE
MOTOR VEHICLE SAFETY OFFICE
RENOVATION
 Project No. HWY-0-02-08
 Scale: As Noted Date: April 2014
 SHEET No. E2.3 OF 57 SHEETS

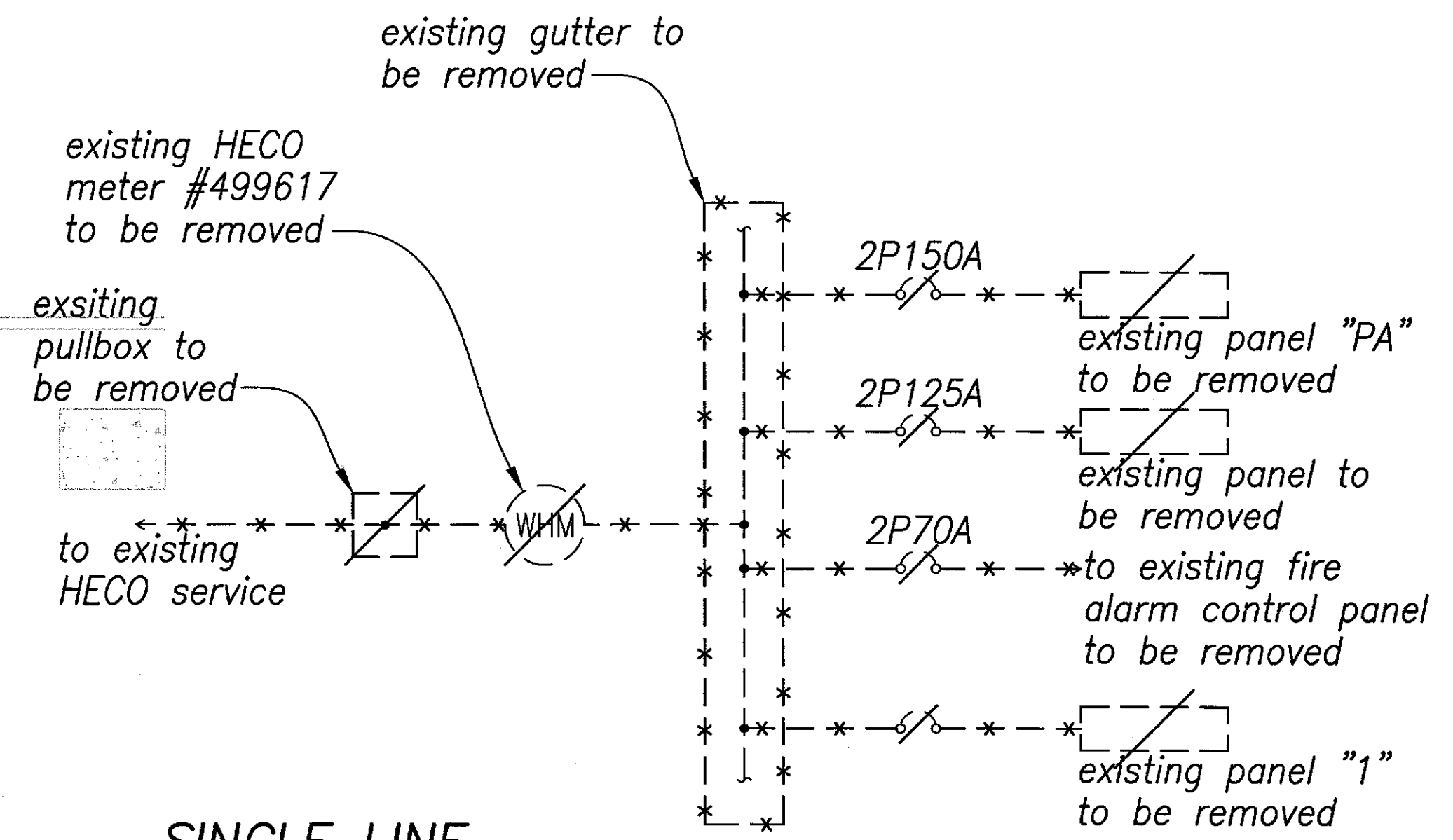
FED. ROAD DIST. NO.	STATE	PROJ. NO.	FISCAL YEAR	SHEET NO.	TOTAL SHEETS
HAWAII	HAW.	HWY-0-02-08	2014	ADD.53	57



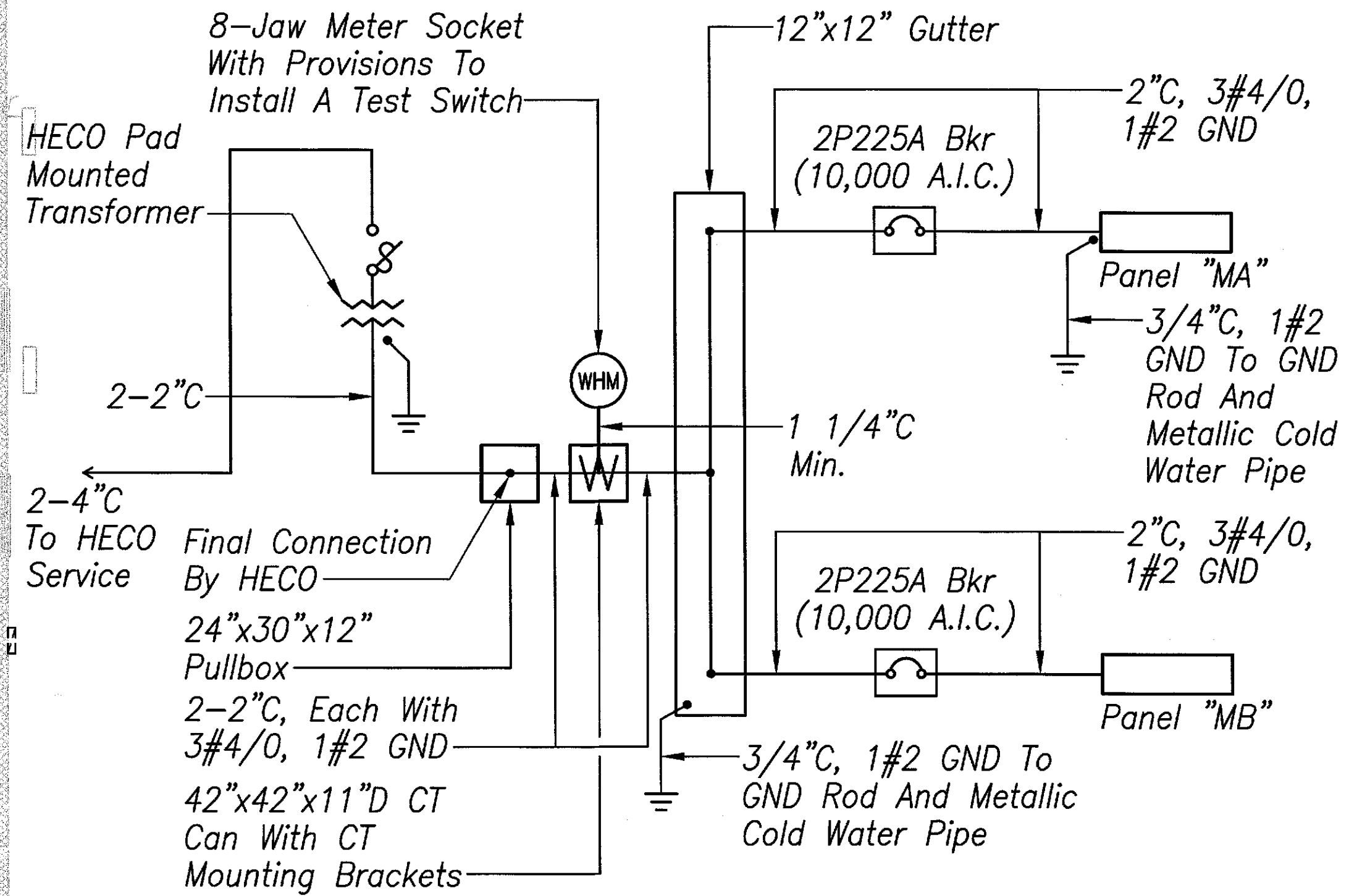
BUILDING 'A'
POWER PLAN - NEW WORK 1
 Scale - 1/8" = 1'-0" E2.4 | E2.4



BUILDING 'B'
POWER PLAN - NEW WORK 2
 Scale - 1/8" = 1'-0" E2.4 | E2.4



SINGLE LINE
DIAGRAM - DEMOLITION WORK A
 Scale - NTS E2.4 | E2.4

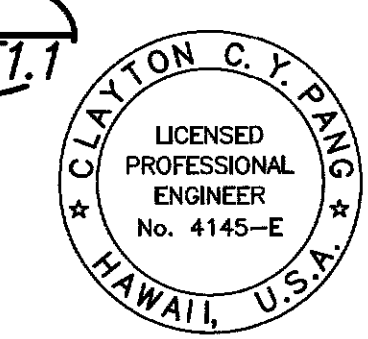
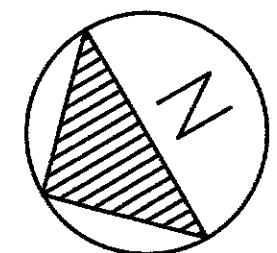


SINGLE LINE
DIAGRAM - NEW WORK B
 Scale - NTS E2.4 | E2.4

New Feeder
 New Feeder
 New 2'x4' Pullbox

New Electrical Service Equipment.
 See Elevation B
E1.1 | E1.1

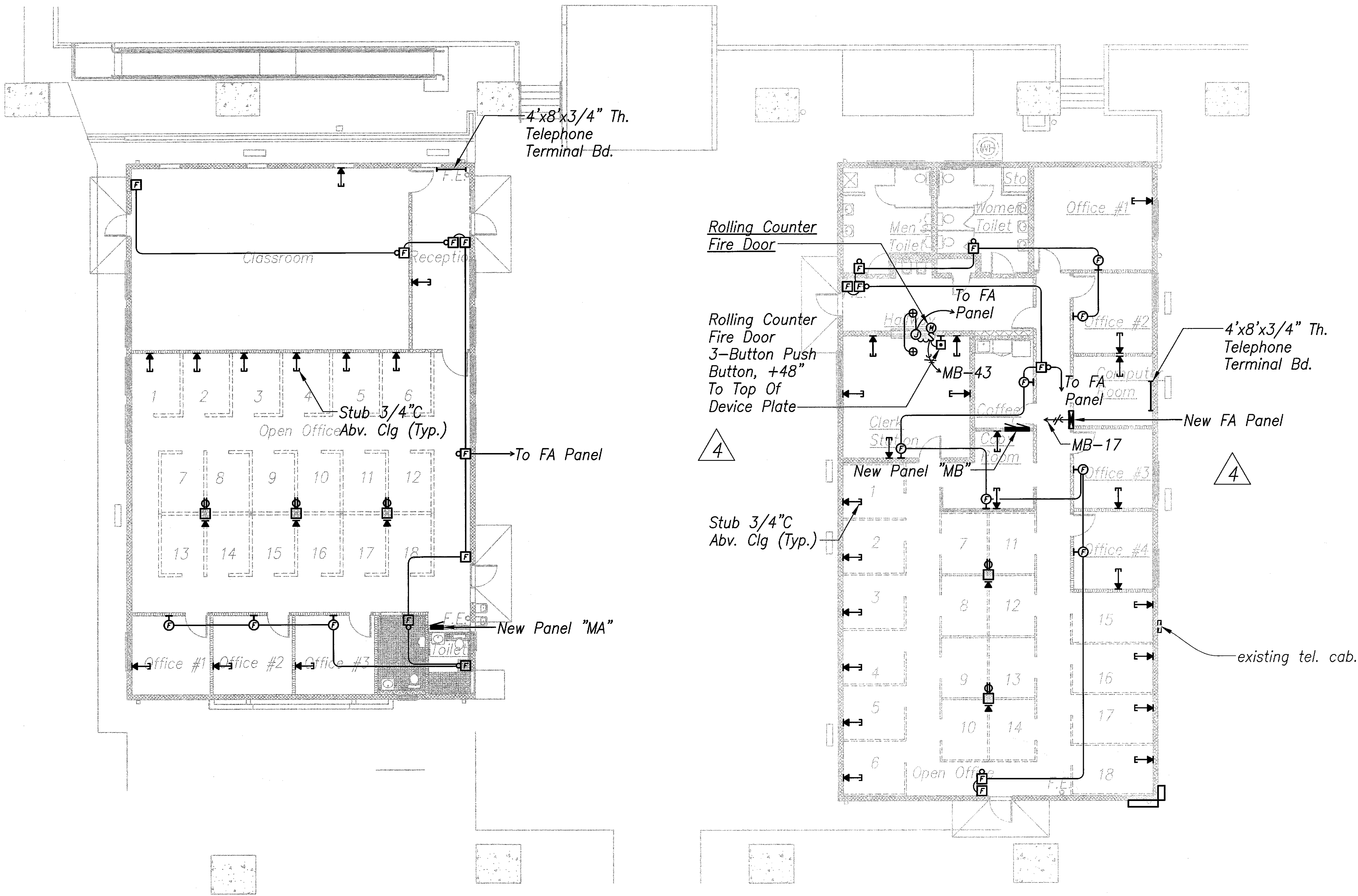
DATE	_____
SURVEY PLOTTED BY	_____
DESIGNED BY	_____
TRACED BY	_____
QUANTITIES BY	_____
CHECKED BY	_____
ORIGINAL PLAN	_____
NOTE BOOK	_____
No.	_____



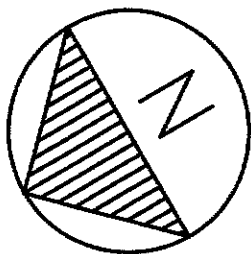
THIS WORK WAS PREPARED BY ME OR UNDER MY SUPERVISION
 EXPIRATION DATE OF THE LICENSE 4/30/2016

6/20/14	Revised Outlet Mounting Heights
DATE	REVISIONS
STATE OF HAWAII DEPARTMENT OF TRANSPORTATION HIGHWAYS DIVISION	
BUILDING 'A' & 'B' POWER PLANS - NEW WORK, SINGLE LINE DIAGRAMS - DEMOLITION & NEW WORK	
MOTOR VEHICLE SAFETY OFFICE RENOVATION	
Project No. HWY-0-02-08	
Scale: As Noted	Date: April 2014

FED. ROAD DIST. NO.	STATE	PROJ. NO.	FISCAL YEAR	SHEET NO.	TOTAL SHEETS
HAWAII	HAW.	HWY-0-02-08	2014	ADD.54	57

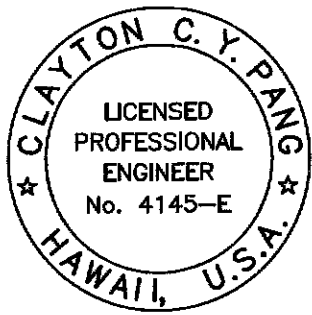


SURVEY PLOTTED BY	DATE
DRAWN BY	
TRACED BY	
CHECKED BY	
NOTED BY	
QUANTITIES BY	
CHECKED BY	
ORIGINAL PLAN	
NOTE BOOK	
No.	



**BUILDING 'A' SIGNAL
SIGNAL PLAN – NEW WORK**
Scale – 1/8" = 1'-0"

**BUILDING 'B' SIGNAL
SIGNAL PLAN – NEW WORK**
Scale – 1/8" = 1'-0"



CLAYTON C.Y. PANG
LICENSED PROFESSIONAL ENGINEER
No. 4145-E
HAWAII, U.S.A.
THIS WORK WAS PREPARED BY ME OR UNDER MY SUPERVISION

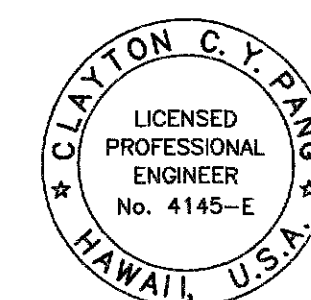
6/20/14	Indicated Push Button Mounting Height
DATE	REVISIONS
STATE OF HAWAII DEPARTMENT OF TRANSPORTATION HIGHWAYS DIVISION BUILDING 'A' & 'B' SIGNAL PLANS – NEW WORK MOTOR VEHICLE SAFETY OFFICE RENOVATION Project No. HWY-0-02-08 Scale: As Noted Date: April 2014	

FED. ROAD DIST. NO.	STATE	PROJ. NO.	FISCAL YEAR	SHEET NO.	TOTAL SHEETS
HAWAII	HAW.	HWY-0-02-08	2014	ADD.56	57

4 New Panel "MA" 240/120 Volts 1Ø, 3WSN 3P225A Main Breaker Branch Breaker I.C. 10,000 Amps Flush, 20" Wide Cabinet, Industrial Bolted					
CKT NO.	BKR	L O A D	KVA		WIRE
			L1	L2	
1	1P20A	Lights, EF-1	1.4		12
2		Recep	1.0		
3		Lights		1.3	
4		Recep		1.0	
5		Lights	0.9		
6		Recep	1.0		
7		Lights - NL		0.7	
8		Recep		1.0	
9		Lights - Courtyard NL	0.8		10
10		Recep	1.0		12
11		Lights - Courtyard NL		0.8	10
12		Recep		1.0	12
13		Lights - Roof Flood NL	0.4		
14		Recep	1.0		
15		Spare			
16		Recep		1.0	12
17		Recep - EWC	1.0		
18		Recep	1.0		
19,21	2P30A	Relocated Cu-12/Fcu-12	2.0	2.0	8
20	1P20A	Recep		1.0	12
22,24	2P45A	Cu-14/Fcu-14	2.5	2.5	8
23,25	2P30A	Relocated Cu-11/Fcu-11	2.0	2.0	8
26,28	2P30A	Cu 0-A2/Fcu 0-A2	1.7	1.7	8
27,29	2P30A	Cu 0-A1/Fcu 0-A1	1.7	1.7	8
30,32	2P45A	Cu-15/Fcu-15	2.5	2.5	8
31,33	2P30A	Relocated Cu-13/Fcu-13	2.0	2.0	8
34,36	2P20A	Cu-16/Fcu-16	1.4	1.4	12
35	1P20A	Spare			
37	1P	P F B			
38					
39					
40					
41					
42					
T O T A L S :			25.3	23.6	

New Panel "MB" 240/120 Volts 1Ø, 3WSN 225A Main Lugs Only Branch Breaker I.C. 10,000 Amps Flush, 2-20" Wide Cabinet, Industrial Bolted						New Panel "MB" (Continued)					
CKT NO.	BKR	L O A D	KVA		WIRE	CKT NO.	BKR	L O A D	KVA		WIRE
			L1	L2					L1	L2	
1	1P20A	Lights	1.2		12	31,33	2P20A	Exist Cu-7/Fcu-7	1.2	1.2	12
2		Recep	1.0			32,34	1P20A	Cu-3/Fcu-3	1.0	1.0	12
3		Lights		1.1							
4		Recep		1.0							
5		Lights, EF-2, EF-3, EF-4	1.3			35,37	2P25A	Cu-6/Fcu-6	1.4	1.4	10
6		Recep	1.0			36,38	2P25A	Relocated Cu-4/Fcu-4	1.6	1.6	10
7		Lights - NL		0.6							
8		Recep		1.0							
9			1.0			39,41	2P20A	Relocated Cu-5/Fcu-5	1.2	1.2	12
10			1.0			40,42	2P30A	Existing Water Heater	1.8	1.8	8
11				1.0							
12				1.0							
13			1.0			43	1P20A	Rolling Counter Fire Door	1.5		12
14			1.0			44		Recep - EWC	1.0		12
15				1.0		45		Spare			
16				1.0		46					
17		FA Panel	1.0			47					
18		Recep	1.0			48					
19,21	2P20A	Cu-10/Fcu-10	0.9	0.9		49	1P	P F B			
20,22	2P20A	Cu-1/Fcu-1	0.9	0.9		50					
						51					
						52					
23,25	2P25A	Exist Cu-9/Fcu-9	1.6	1.6	10	53					
24,26	2P30A	Cu 0-B/Fcu 0-B	1.7	1.7	8	54					
						55					
						56					
27,29	2P15A	Exist Cu-8/Fcu-8	0.7	0.7	12	57					
28,30	2P15A	Cu-2/Fcu-2	0.6	0.6	12	58					
						59					
						60					
						T O T A L S :					
						27.6 22.3					

DATE	_____
SURVEY PLOTTED BY	_____
DRAWN BY	_____
TRACED BY	_____
DESIGNED BY	_____
CHECKED BY	_____
ORIGINAL PLAN	_____
NOTE BOOK	_____
No.	_____



THIS WORK WAS PREPARED BY
ME OR UNDER MY SUPERVISION

6/20/14	4 Changed Panel To Flush Mounted
DATE	REVISIONS
STATE OF HAWAII DEPARTMENT OF TRANSPORTATION HIGHWAYS DIVISION PANEL SCHEDULES	
MOTOR VEHICLE SAFETY OFFICE RENOVATION Project No. HWY-0-02-08 Scale: As Noted Date: April 2014	

SHEET No. E3.1 OF 57 SHEETS

ADD.56

