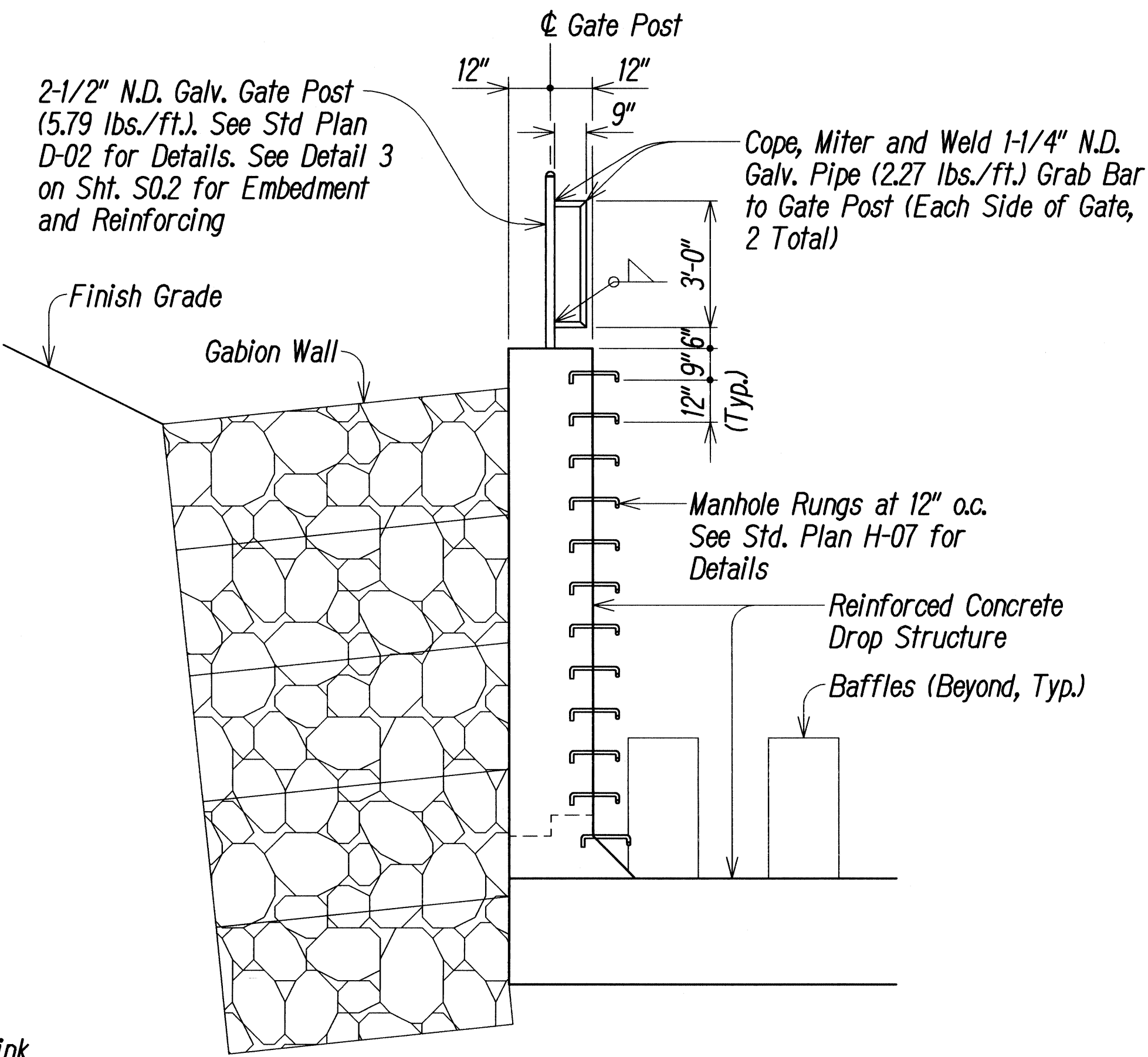
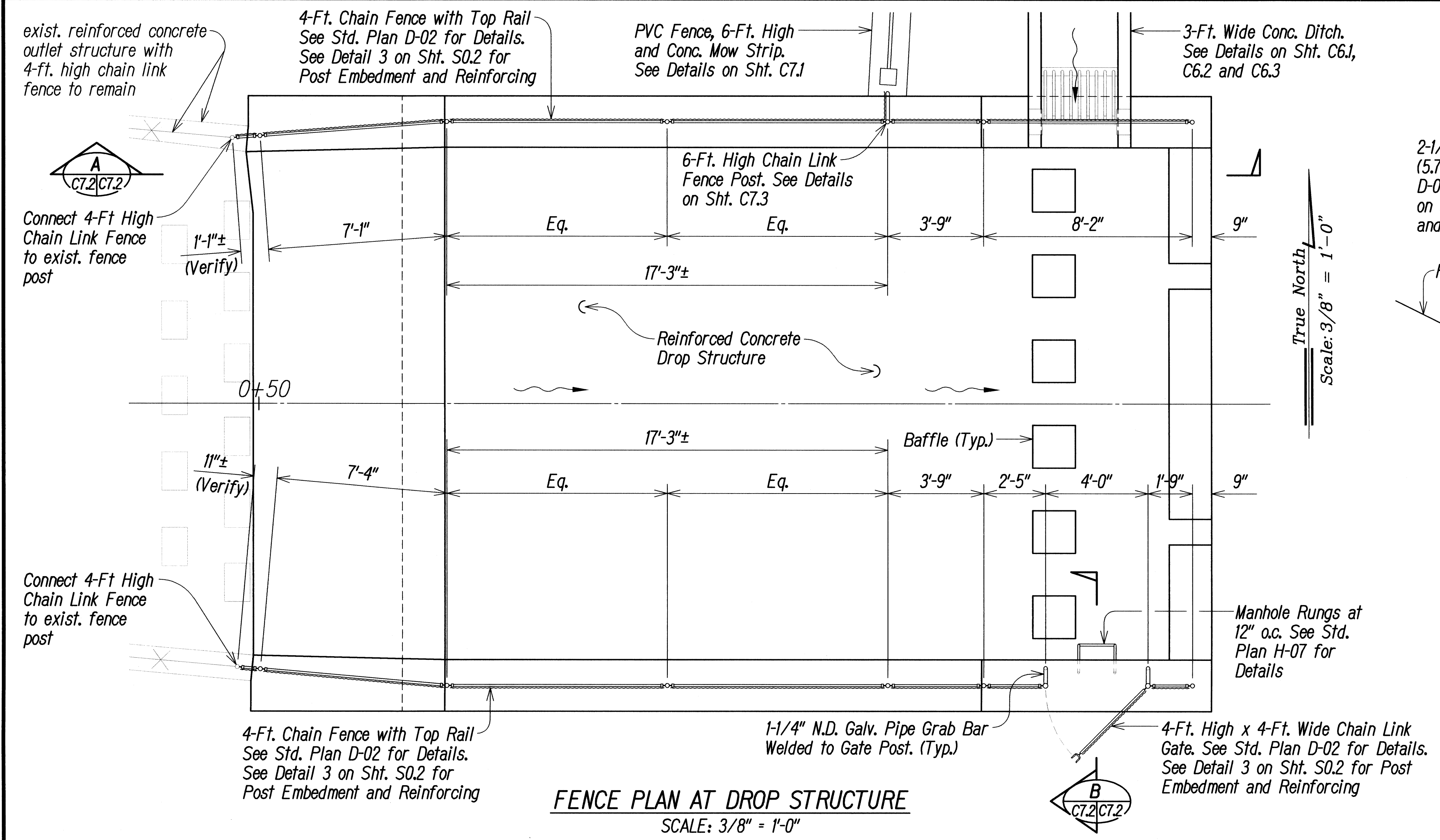


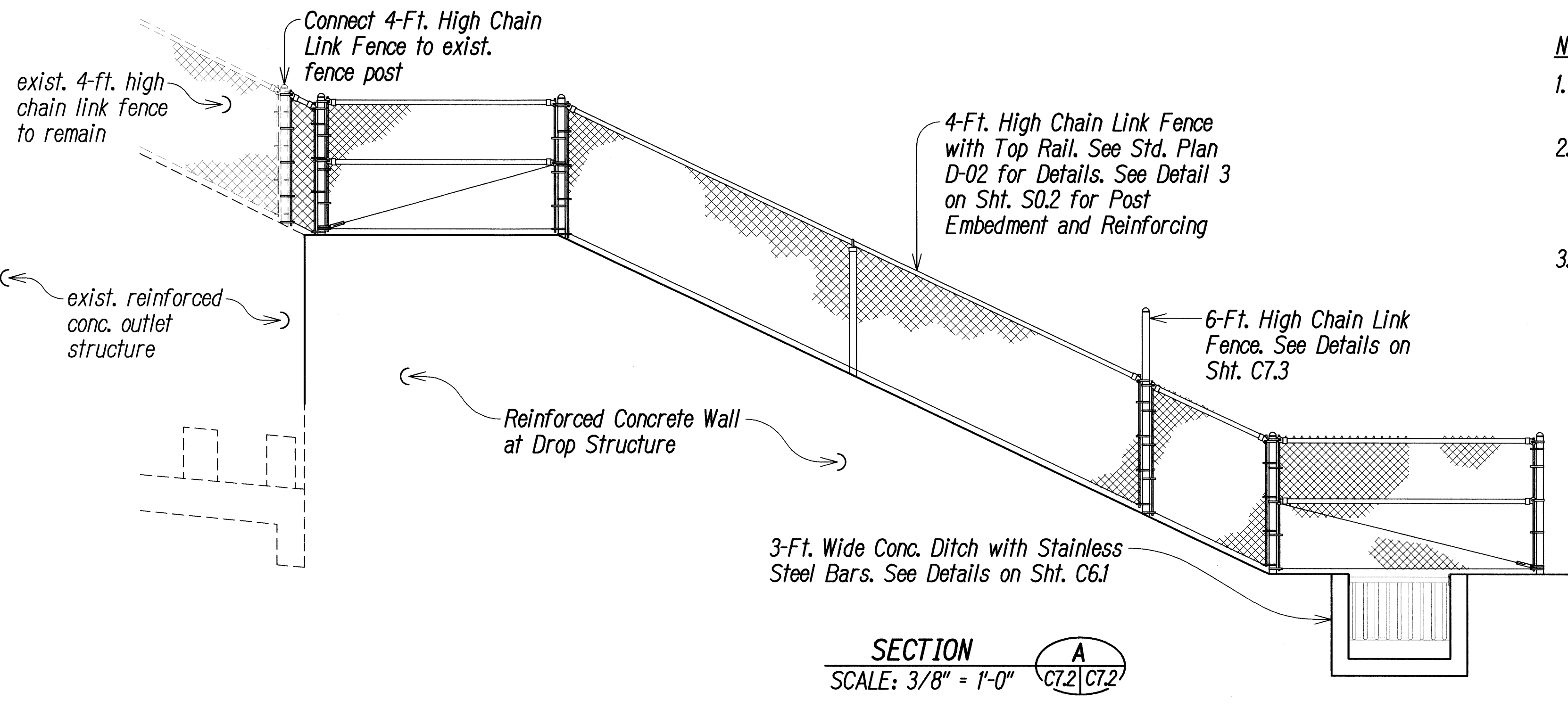
| | | |
|---------------|-------------------------|------------|
| ORIGINAL PLAN | SURVEY PLOTTED BY _____ | DATE _____ |
| NOTE BOOK | DRAWN BY _____ | " _____ |
| | TRACED BY _____ | " _____ |
| | DESIGNED BY _____ | " _____ |
| | QUANTITIES BY _____ | " _____ |
| No. _____ | CHECKED BY _____ | " _____ |

| | |
|------|----------|
| DATE | REVISION |
|------|----------|

| FED. ROAD DIST. NO. | STATE | FED. AID PROJ. NO. | FISCAL YEAR | SHEET NO. | TOTAL SHEETS |
|---------------------|-------|--------------------|-------------|-----------|--------------|
| HAWAII | HAW. | STP-0300(125) | 2011 | 25 | 55 |



SECTION B
SCALE: 3/8" = 1'-0"
C7.2/C7.2



SECTION A
SCALE: 3/8" = 1'-0"
C7.2/C7.2

- Notes:
1. All welds and damaged galvanized surfaces shall be cleaned and painted with two (2) coats of cold galvanized compound.
 2. The 1-1/4" nominal diameter galvanized pipe grab bars, including coping, mitering, welding and cold galvanizing compound will not be paid for separately and shall be considered incidental to Item No. 607.0200 - Chain Link Gate, 4-Feet High And 4-Feet Wide.
 3. The manhole rungs will not be paid for separately and shall be considered incidental to Item No. 503.0100 - Concrete for Drop Structure.



THIS WORK WAS PREPARED BY ME OR UNDER MY SUPERVISION.

Russell M. Araki
Professional Engineer
LIC. EXP. DATE

STATE OF HAWAII
DEPARTMENT OF TRANSPORTATION
HIGHWAYS DIVISION

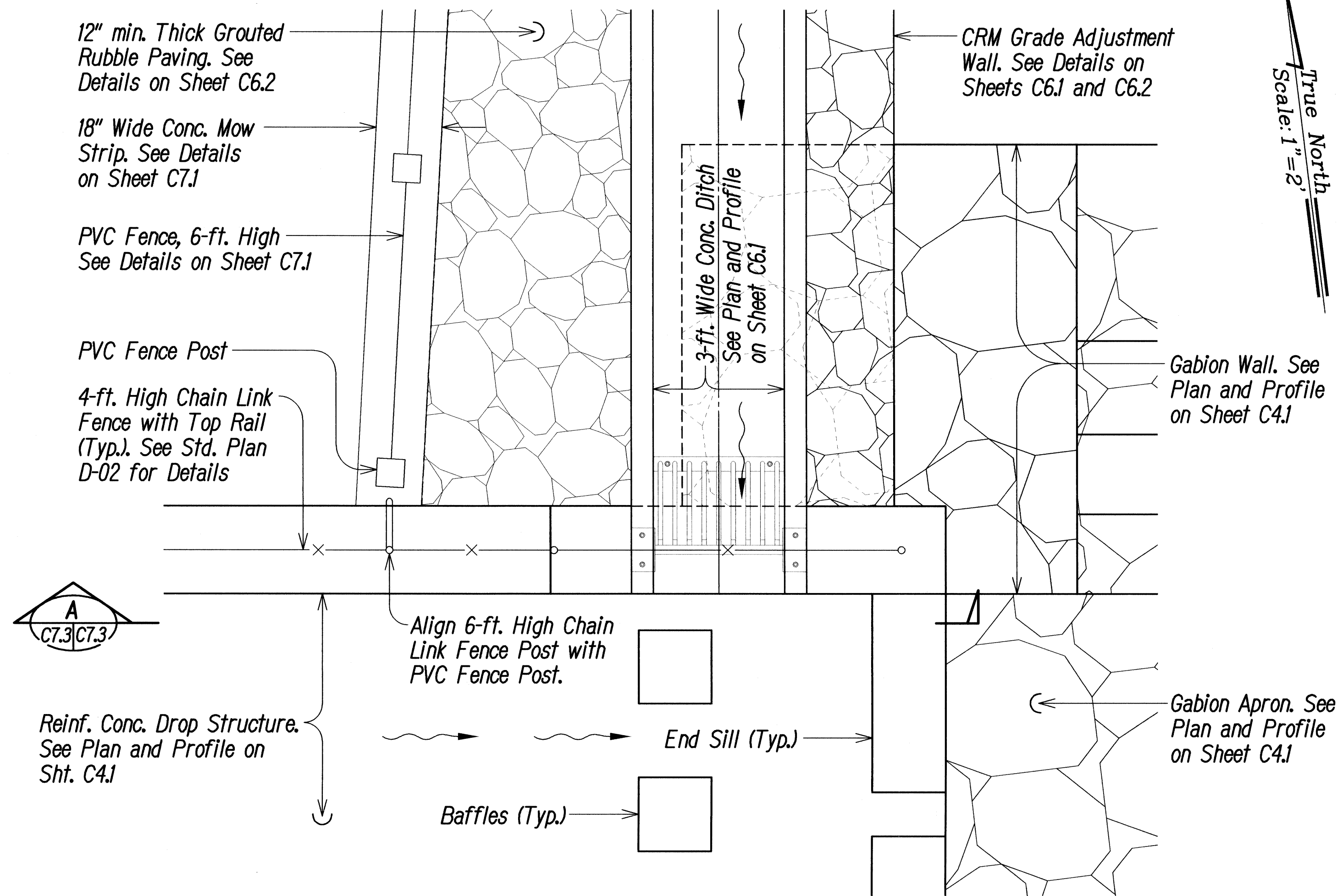
CHAIN LINK FENCE DETAILS

CASTLE HILLS ACCESS ROAD
Drainage Improvements, Phase 2
FEDERAL-AID PROJECT NO. STP-0300(125)

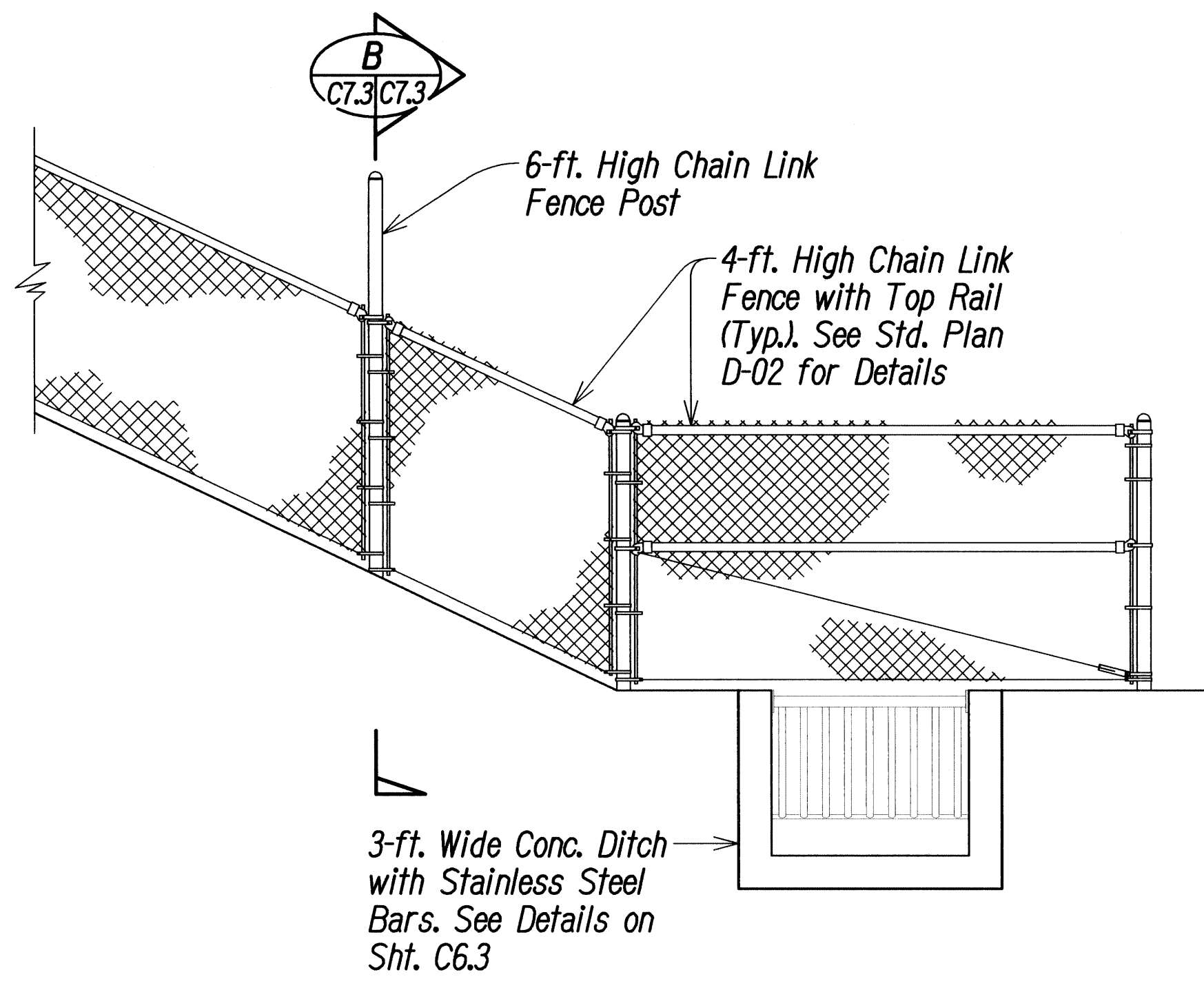
Scale: As Shown Date: December 2011

SHEET No. C7.2 OF C7.3 SHEETS

| FED. ROAD DIST. NO. | STATE | FED. AID PROJ. NO. | FISCAL YEAR | SHEET NO. | TOTAL SHEETS |
|---------------------|-------|--------------------|-------------|-----------|--------------|
| HAWAII | HAW. | STP-0300(125) | 2011 | 26 | 55 |



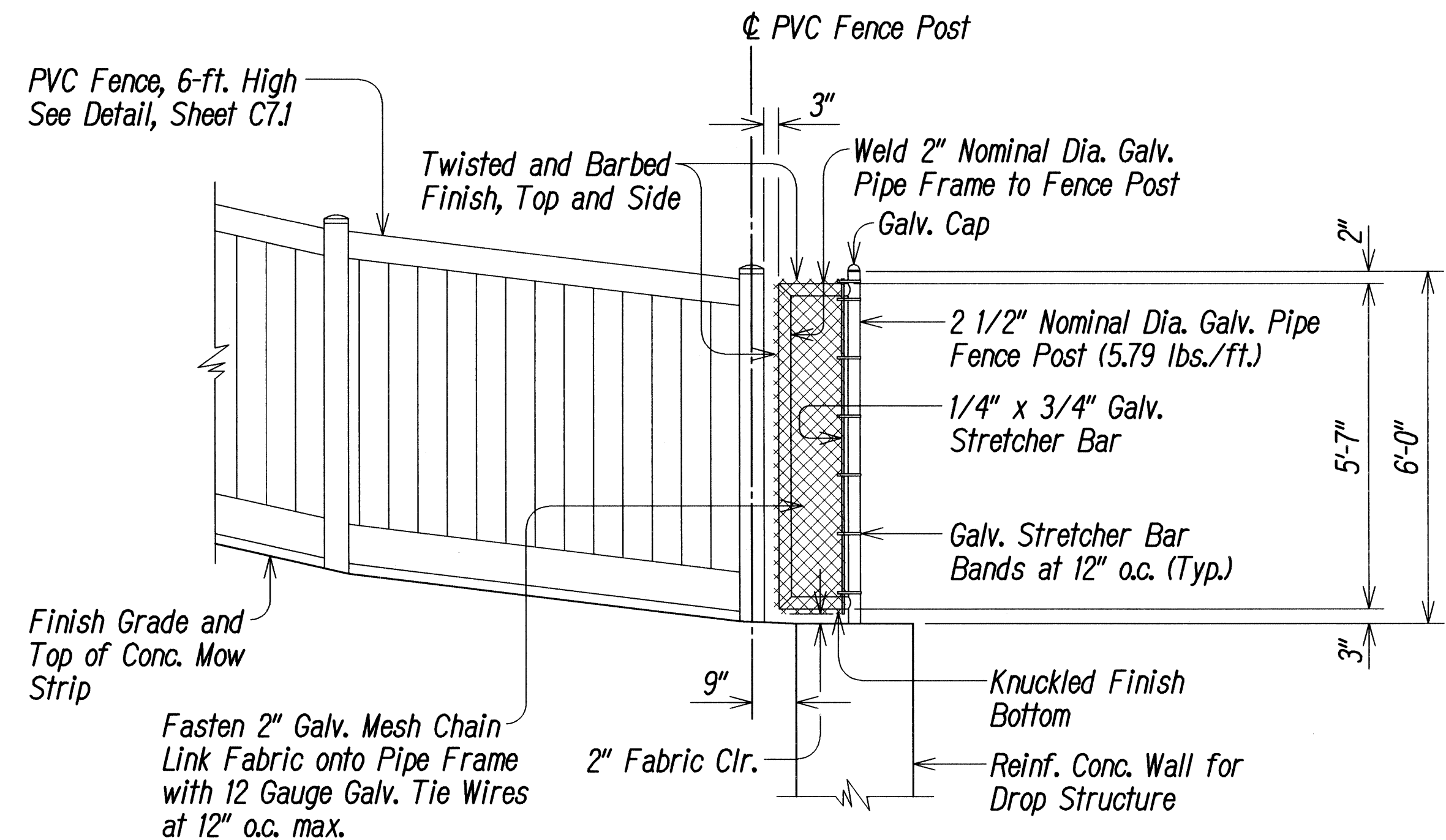
PLAN
SCALE: 1/2" = 1'-0"



SECTION A
SCALE: 1/2" = 1'-0"

Notes:

1. All welds and damaged galvanized surfaces shall be cleaned and painted with two (2) coats of cold galvanized compound.
2. The 2" and 2 1/2" nominal diameter galvanized pipes, cap, stretcher bar, stretcher bar bands, chain link fabric, tie wires, including welding and cold galvanized compound will not be paid for separately and shall be considered incidental to Item No. 607.0100 - 4-Feet, Chain Link Fence.



SECTION B
SCALE: 1/2" = 1'-0"



THIS WORK WAS PREPARED BY ME OR UNDER MY SUPERVISION.

Russell M. Araki
RMA, Inc.
dba PARK ENGINEERING

APRIL 30, 2012
LIC. EXP. DATE

STATE OF HAWAII
DEPARTMENT OF TRANSPORTATION
HIGHWAYS DIVISION

CHAIN LINK FENCE DETAILS

CASTLE HILLS ACCESS ROAD
Drainage Improvements, Phase 2
FEDERAL-AID PROJECT NO. STP-0300(125)

Scale: As Shown Date: December 2011

SHEET No. C7.3 OF C7.3 SHEETS

| DATE | BY |
|-------------|----|
| DESIGNED BY | |
| CHECKED BY | |
| NO. | |