

FED. ROAD DIST. NO.	STATE	FED. AID PROJ. NO.	FISCAL YEAR	SHEET NO.	TOTAL SHEETS
HAWAII	HAW.	STP-0300(125)	2011	15	55

Note:
All damaged erosion control matting as determined by the Engineer, shall be removed and replaced with new erosion control matting. Topdress with imported planting soil, grade and grass the area prior to installing the new erosion control matting. See Sheet C1.2 for the approximate location of the existing erosion control matting.

- Legend:**
- 180 — Finish 5-ft Contour
 - 170 — Finish 1-ft Contour
 - - - 170 - - - Existing 5-ft Contour
 - - - 170 - - - Existing 1-ft Contour
 - - - - - Limits of Grading
 - F179.9 Finish Grade Elevation
 - 182.0 Existing Ground Elevation
 - - - - - Grade Bank
 - [Hatched Box] Erosion Control Matting



THIS WORK WAS PREPARED BY ME
OR UNDER MY SUPERVISION.

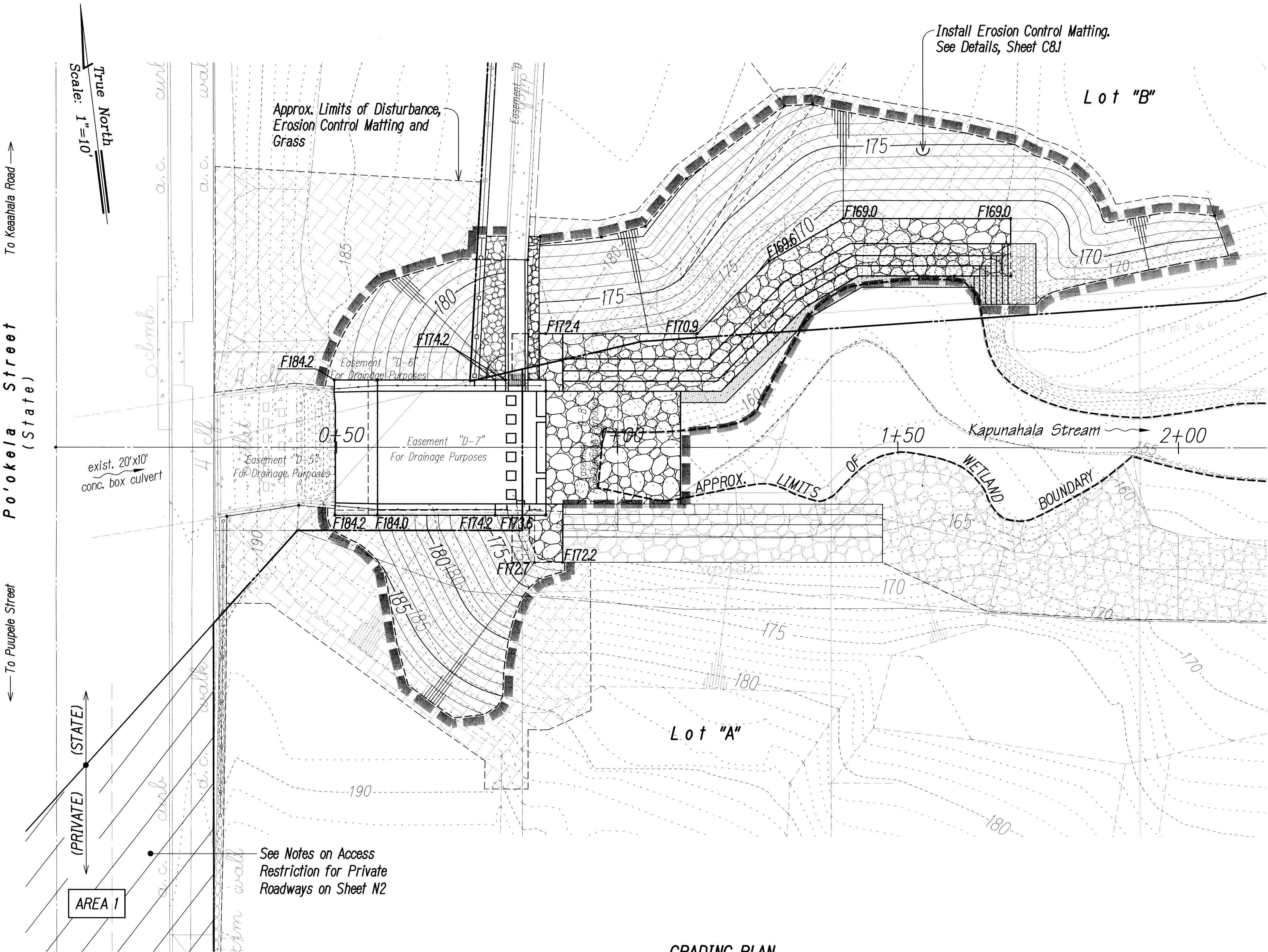
Russell M. Araki
ParEn, Inc.
dba PARK ENGINEERING
APRIL 30, 2012
LIC. EXP. DATE

STATE OF HAWAII
DEPARTMENT OF TRANSPORTATION
HIGHWAYS DIVISION
GRADING PLAN
CASTLE HILLS ACCESS ROAD
Drainage Improvements, Phase 2
FEDERAL-AID PROJECT NO. STP-0300(125)

Scale: As Shown Date: December 2011

SHEET No. C32 OF C32 SHEETS

GRADING PLAN
SCALE: 1"=10'



See Notes on Access
Restriction for Private
Roadways on Sheet N2

ORIGINAL PLAN	NO.
SURVEY PLOTTED BY	DATE
DRAWN BY	
DESIGNED BY	
QUANTITIES BY	
CHECKED BY	