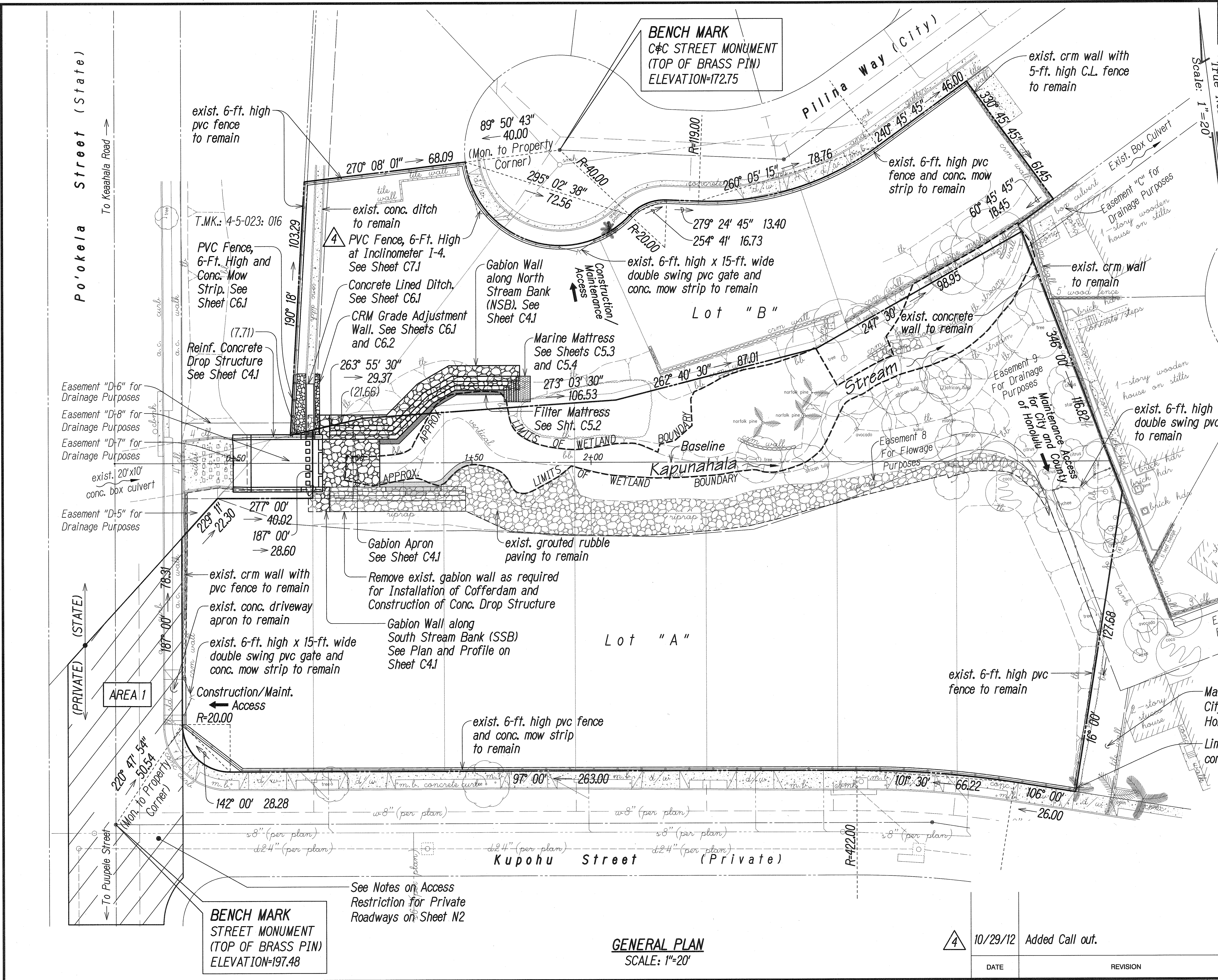


FED. ROAD DIST. NO.	STATE	FED. AID PROJ. NO.	FISCAL YEAR	SHEET NO.	TOTAL SHEETS
HAWAII	HAW.	STP-0300(125)	2011	ADD. 10	55



- Legend:**
- Property Line
 - Gabion Wall
 - PVC Fence, 6-ft. High w/ Conc. Mow Strip
 - PVC Gate, 6-ft. High x 15-ft Wide, Double Swing with Conc. Mow Strip
 - Erosion Control Mating



THIS WORK WAS PREPARED BY ME OR UNDER MY SUPERVISION.

Russell M. Arakaki
Professional Engineer
No. 8297-C
HAWAII, U.S.A.

STATE OF HAWAII
DEPARTMENT OF TRANSPORTATION
HIGHWAYS DIVISION

GENERAL PLAN

CASTLE HILLS ACCESS ROAD
Drainage Improvements, Phase 2
FEDERAL-AID PROJECT NO. STP-0300(125)

Scale: As Shown Date: December 2011

SHEET No. 10 OF 13 SHEETS

ADD. 10

ORIGINAL PLAN	DATE
DESIGNED BY	
CHECKED BY	
NOTED BY	
QUANTITIES BY	
NO.	

GENERAL PLAN
SCALE: 1"=20'

10/29/12 Added Call out.

DATE REVISION