

1. *Inclinometers, surface settlement points and separation markers, hereinafter referred to instrumentation devices, were installed by the Engineer along the perimeter of the project. Baseline data and measurements were collected by the Engineer from these instrumentation devices prior to the start of construction. The Engineer will continue to collect data and take measurements from these instrumentation devices during and after construction.*
2. *The locations of the instrumentation devices shown on the drawing are approximately only. The Contractor shall verify the location of the instrumentation devices in the field.*
3. *The Contractor shall exercise caution when working around and near the existing instrumentation devices.*
4. *The Contractor shall protect the instrumentation devices from damage. Any damaged instrumentation devices resulting from the contractor's work, activities and/or actions, as determined by the Engineer, shall be replaced at no additional cost to the State and to the satisfaction of the Engineer.*
5. *See Section 670 - Construction Surveys of the Special Provisions for additional requirement.*

 *Boring Log B-1 Location*

 *Exist. Inclinator No. 1*

 *Exist. Surface Settlement Point No. 1*

 *SM-1A*

 *SM-1B*

 *Exist. Separation Marking 1A*

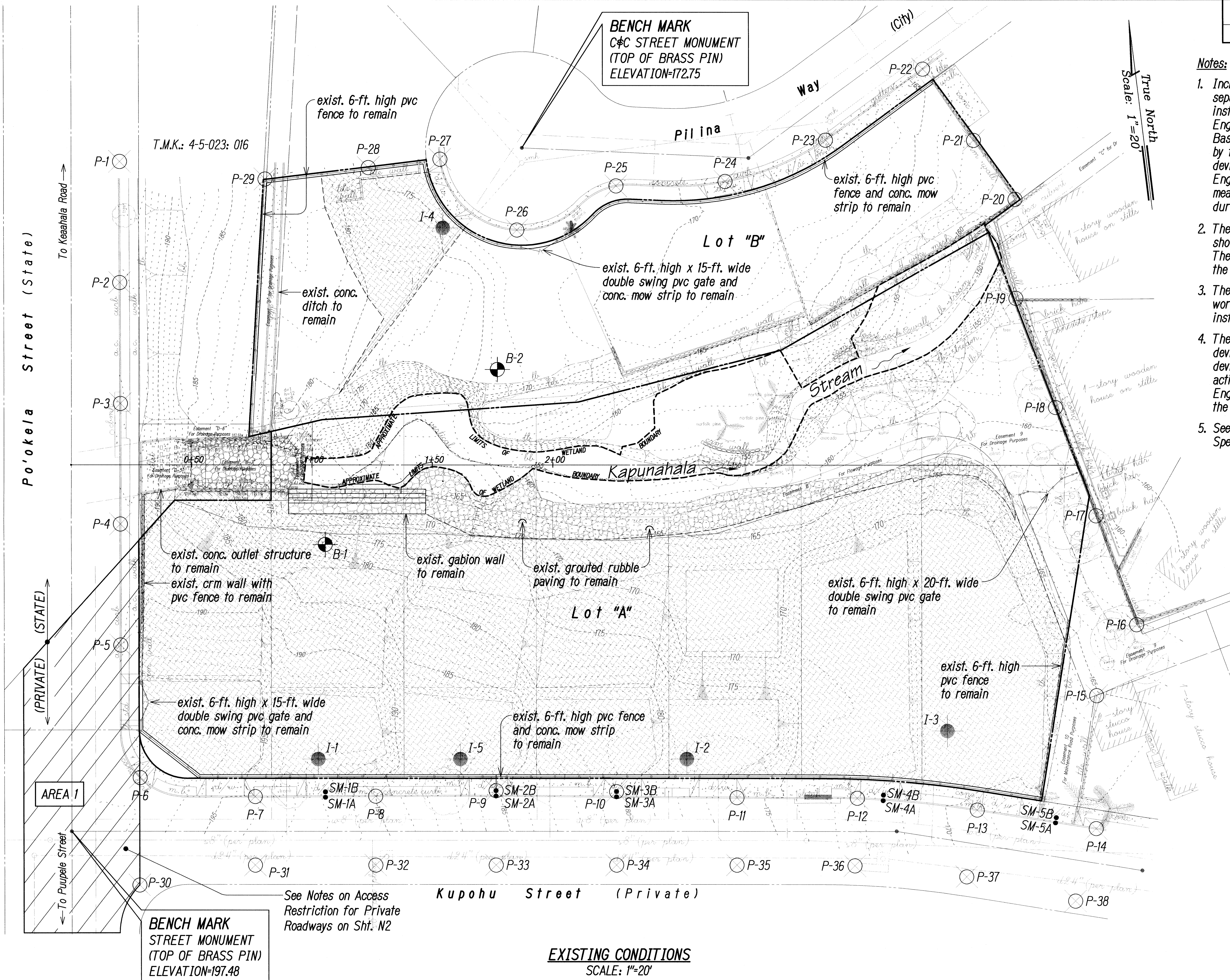
 *Exist. Separation Marker 1B*

 *Exist. Erosion Control Matting*



Rumelle M. Arakaki APRIL 30, 2012
ParEn, Inc. LIC. EXP. DATE
dba PARK ENGINEERING

SHEET No. C1.2 OF C1.3 SHEETS



- See Notes on Access
Restriction for Private
Roadways on Sht. N2

EXISTING CONDITIONS
SCALE: 1"=20'

ORIGINAL PLAN	SURVEY PLOTTED BY _____	DATE _____
NOTE BOOK	DRAWN BY _____	" _____
	TRACED BY _____	" _____
	DESIGNED BY _____	" _____
	QUANTITIES BY _____	" _____
No. _____	CHECKED BY _____	" _____