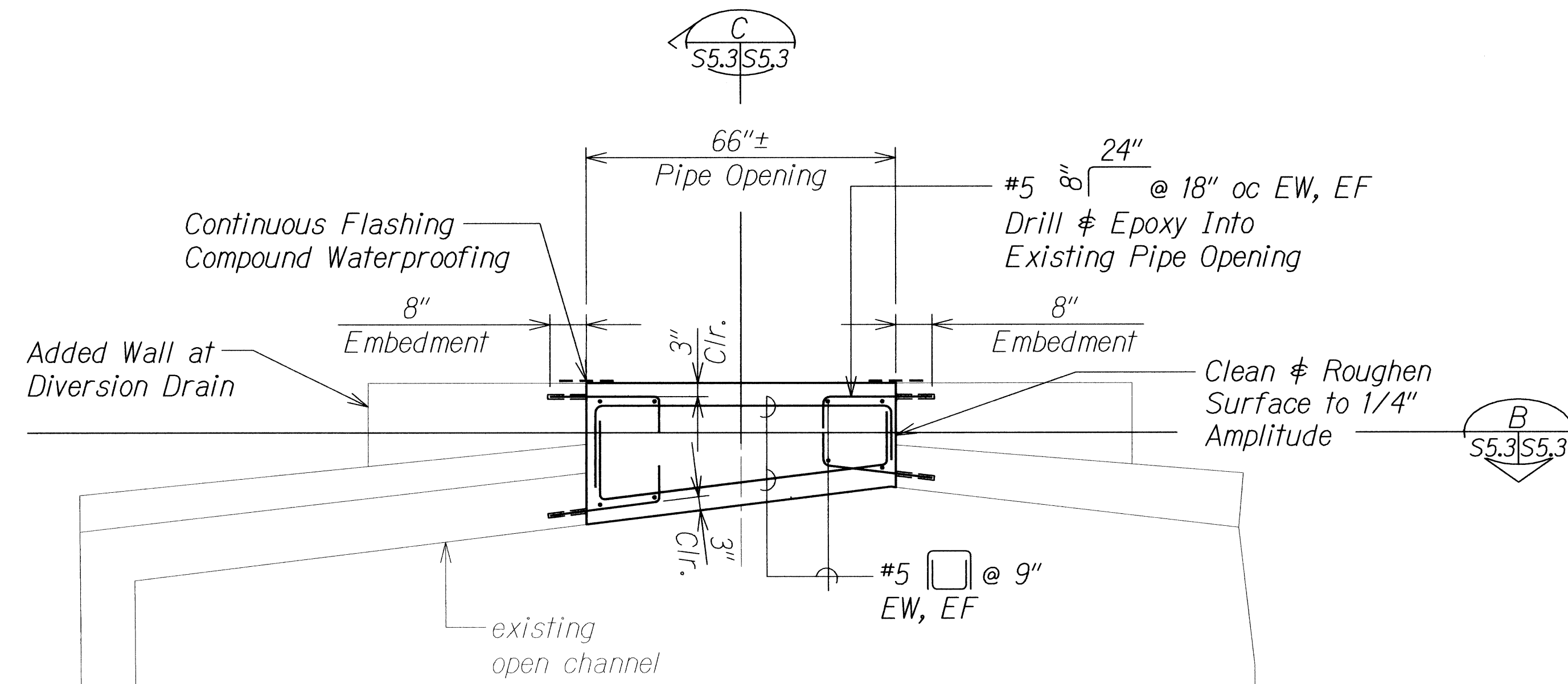


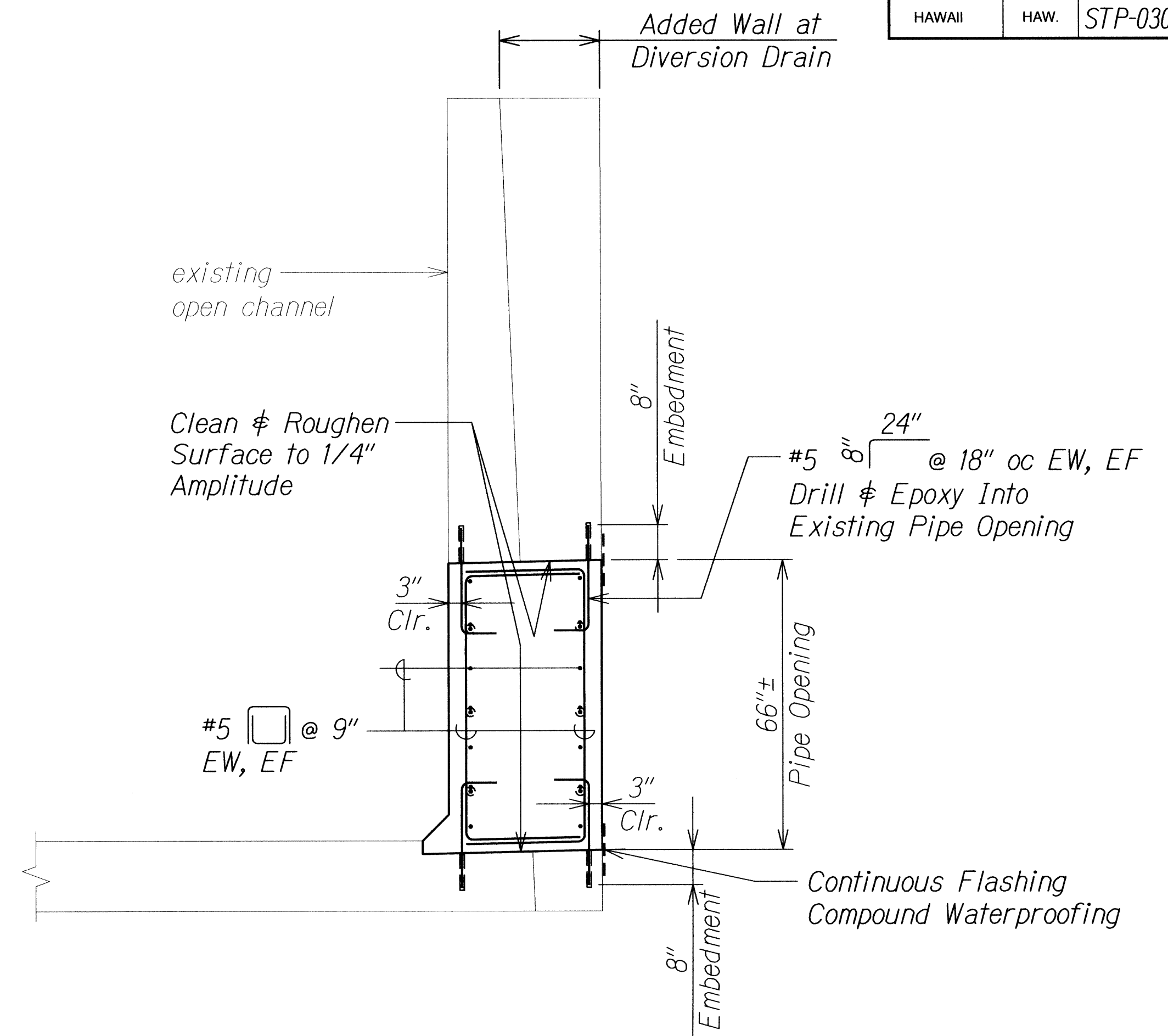
FED. ROAD DIST. NO.	STATE	FED. AID	FISCAL YEAR	SHEET NO.	TOTAL SHEETS
HAWAII	HAW.	STP-0300(125)	2011	48	55



SECTION - DIVERSION DRAIN PIPE OPENING REPAIR

Scale: 1/2" = 1'-0"

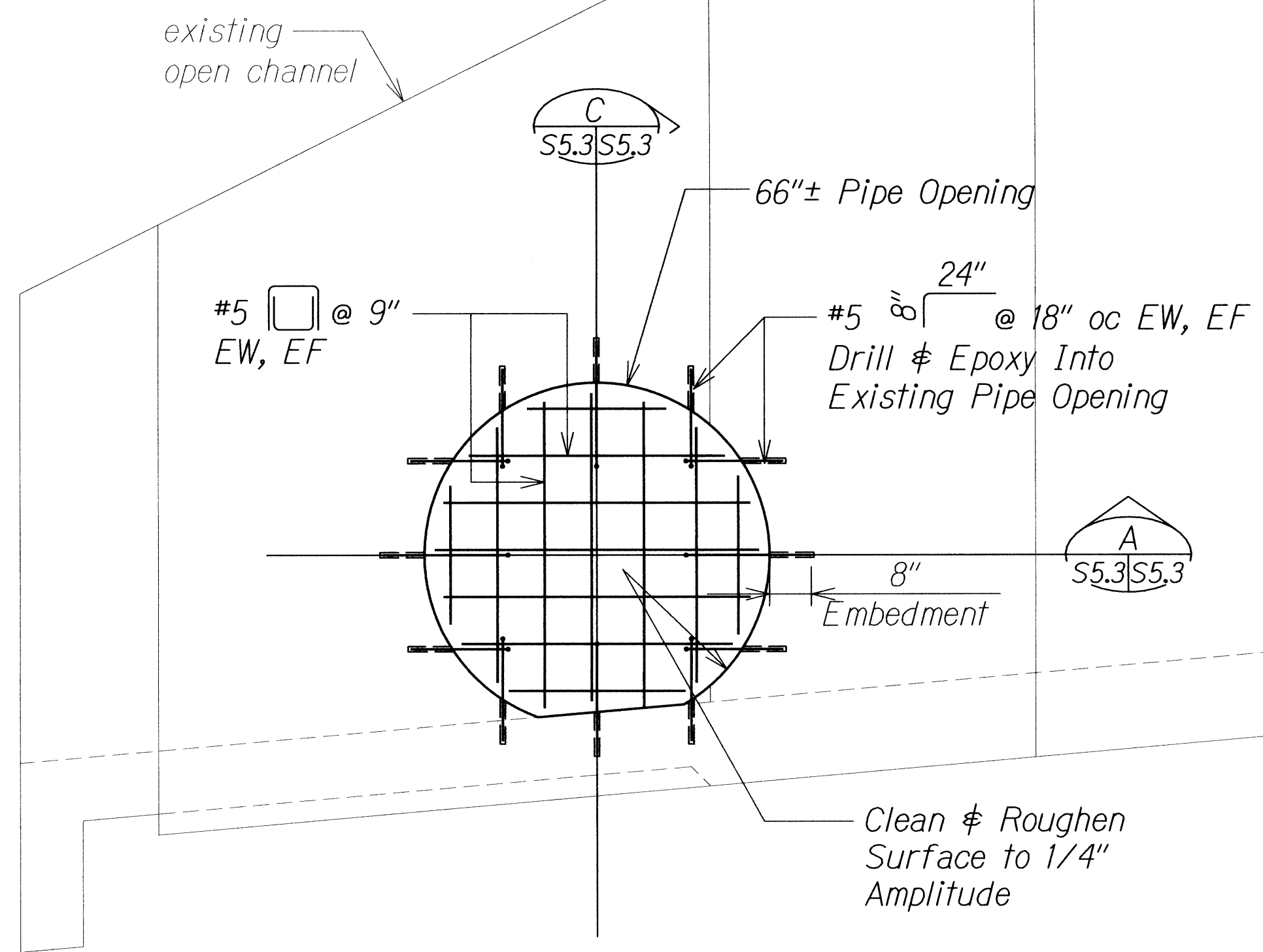
A
S5.3|S5.3



SECTION - DIVERSION DRAIN PIPE OPENING REPAIR

Scale: 1/2" = 1'-0"

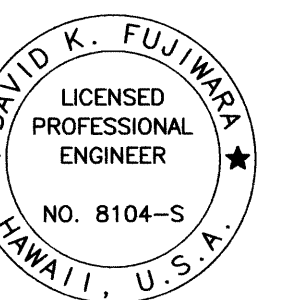
C
S5.3|S5.3



SECTION - DIVERSION DRAIN PIPE OPENING REPAIR

Scale: 1/2" = 1'-0"

B
S5.3|S5.3



THIS WORK WAS PREPARED BY ME
OR UNDER MY SUPERVISION.
David K. Fujiwara
KSF, INC. APRIL 30, 2012
LIC. EXP. DATE

STATE OF HAWAII
DEPARTMENT OF TRANSPORTATION
HIGHWAYS DIVISION
**DIVERSION DRAIN PIPE
OPENING REPAIR SECTIONS**
CASTLE HILLS ACCESS ROAD
Drainage Improvements, Phase 2
Federal-Aid Project No. STP-0300(125)

Scale: As Shown Date: Dec. 2011

SHEET No. S5.3 OF 17 SHEETS

ORIGINAL PLAN	DATE
DESIGNED BY	
TRACED BY	
DESIGNED BY	
QUANTITIES BY	
CHECKED BY	

DRAWING NAME: Z:\00 ONGOING\9041-CASTLE HILLS KAPUNAHALA STR DRAINAGE IMPROVEMENT\12-07-11 VELLUMS\CH-S501.DWG PLOT TIME: 12-08-11, 7:55 PM