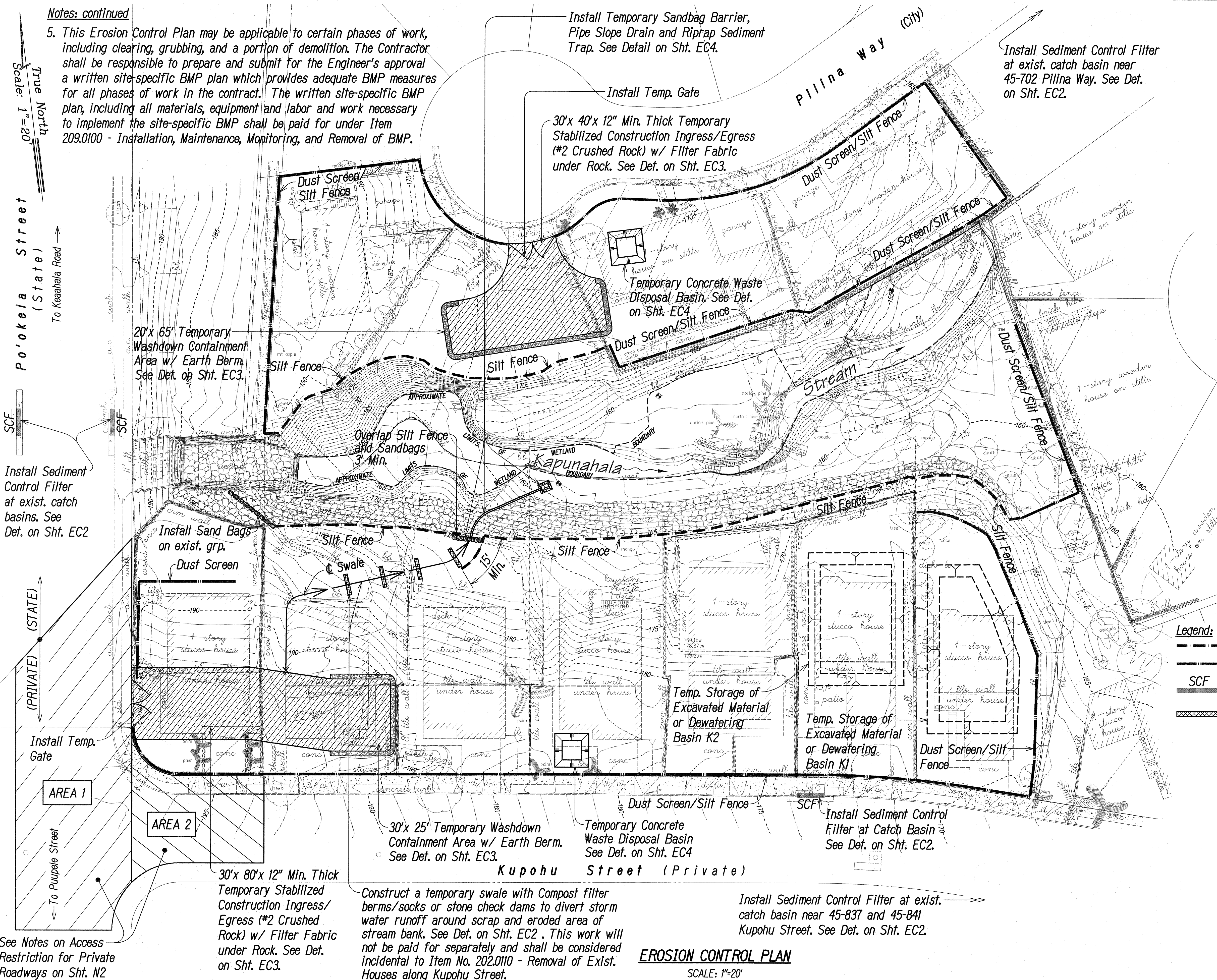


FED. ROAD DIST. NO.	STATE	FED. AID PROJ. NO.	FISCAL YEAR	SHEET NO.	TOTAL SHEETS
HAWAII	HAW.	STP-0300(122)	2010	11	32

Notes: continued

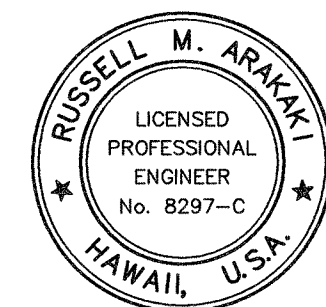
5. This Erosion Control Plan may be applicable to certain phases of work, including clearing, grubbing, and a portion of demolition. The Contractor shall be responsible to prepare and submit for the Engineer's approval a written site-specific BMP plan which provides adequate BMP measures for all phases of work in the contract. The written site-specific BMP plan, including all materials, equipment and labor and work necessary to implement the site-specific BMP shall be paid for under Item 209.0100 - Installation, Maintenance, Monitoring, and Removal of BMP.

Notes:

1. Clean and remove all trash, debris, vegetation, dredge spoils, soft yielding soil, waste concrete, and other objectionable materials from the temporary material storage basin, dewatering basin and concrete waste disposal basin prior to backfilling the basin. The Contractor shall not backfill the basin until the Engineer accepts the cleaned and prepared basin.
2. Backfill and compact the temporary material storage basin and dewatering basin with suitable onsite material acceptable to the Engineer after completion of gabion wall and as directed by the Engineer. Compact and grade to match existing ground. Grass and install erosion control matting as indicated on the plans.
3. Backfill and compact the temporary concrete waste disposal basin with suitable onsite material acceptable to the Engineer after completion of concrete work and as directed by the Engineer. Compact and grade to match existing ground. Grass and install erosion control matting as indicated on the plans.
4. Excavation, installation, maintenance, monitoring, cleaning, backfilling, compacting and removal of the temporary material storage basin, dewatering basin and temporary concrete waste disposal basin will not be paid for separately but shall be considered incidental to Item No. 209.0100 - Installation, Maintenance, Monitoring and Removal of BMP.

Legend:

- Silt Fence
- Dust Screen/Silt Fence
- SCF Sediment Control Filter at Exist. Catch Basin
- Compost Filter Berm/Sock or Stone Check Dam



THIS WORK WAS PREPARED BY ME OR UNDER MY SUPERVISION.

APRIL 30, 2012
LIC. EXP. DATE

STATE OF HAWAII
DEPARTMENT OF TRANSPORTATION
HIGHWAYS DIVISION

EROSION CONTROL PLAN

CASTLE HILLS ACCESS ROAD
Drainage Improvements, Phase 1

FEDERAL-AID PROJECT NO. STP-0300(122)

Scale: As Shown Date: December 2010

SHEET No. EPI OF EPI SHEETS

EROSION CONTROL PLAN

SCALE: 1"=20'