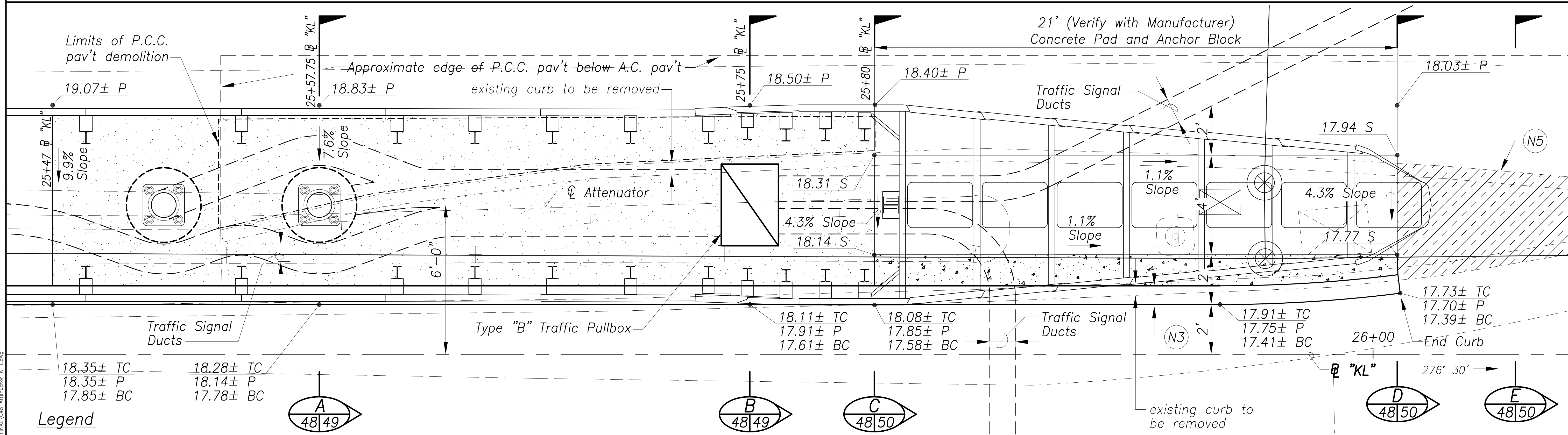
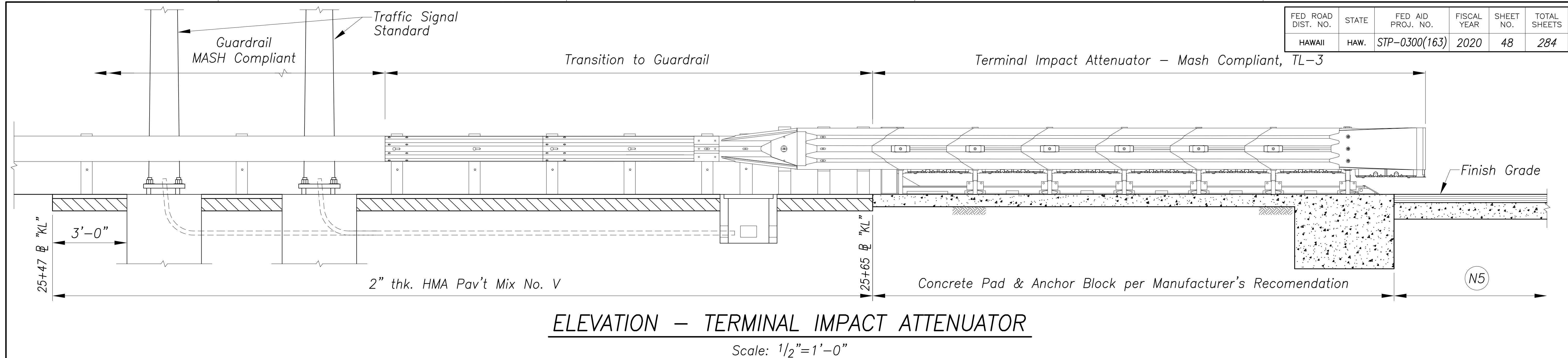
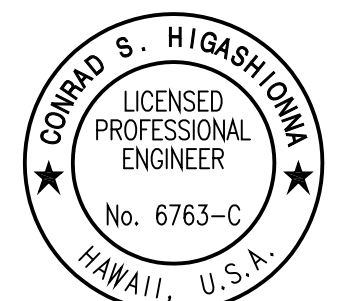


FED. ROAD DIST. NO.	STATE	FED. AID PROJ. NO.	FISCAL YEAR	SHEET NO.	TOTAL SHEETS
HAWAII	HAW.	STP-0300(163)	2020	48	284



- Legend**
- 18.41± P Existing Top Pavement Elevation
 - 18.36 S Finish Top Slab Elevation
 - 18.16 TC Finish Top Curb Elevation
 - 18.03 BC Existing Bottom Curb Elevation
 - Demolish and dispose of P.C.C. Pav't



License Expiration Date: 04-30-22
THIS WORK WAS PREPARED BY ME OR UNDER MY SUPERVISION AND CONSTRUCTION OF THIS PROJECT WILL BE UNDER MY OBSERVATION AS DEFINED IN HAWAII TITLE 16, CHAPTER 115, RULES OF THE BOARD OF PROFESSIONAL ENGINEERS, ARCHITECTS AND SURVEYORS, STATE OF HAWAII.
Conrad Higashimura

STATE OF HAWAII
DEPARTMENT OF TRANSPORTATION
HIGHWAYS DIVISION

TERMINAL IMPACT ATTENUATOR
Kalanianaʻole Hwy & Kalaniki St

*Traffic Signal Modernization,
Oahu, Phase 1*
Federal-Aid Project No. STP-0300(163)
Scale: 1/2"=1'-0" Date: July 2020
SHEET No. R-18 OF 65 SHEETS

SURVEY PLOTTED BY	DATE
DRAWN BY	
DESIGNED BY	
QUANTITIES BY	
CHECKED BY	
ORIGINAL PLAN	
NOTE BOOK	
No.	

Aug 28, 2020 - 10:00am
N:\CAO\DWG\2015\1512-Traffic Signal Modernization @ Various Locations P&E\FINAL\048 Attenuator K 1.dwg

FED. ROAD DIST. NO.	STATE	FED. AID PROJ. NO.	FISCAL YEAR	SHEET NO.	TOTAL SHEETS
HAWAII	HAW.	STP-0300(163)	2020	45	284

Notes:

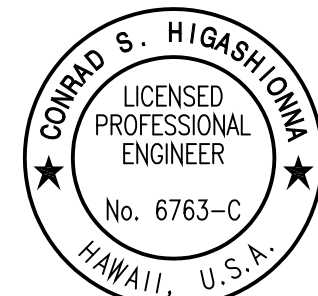
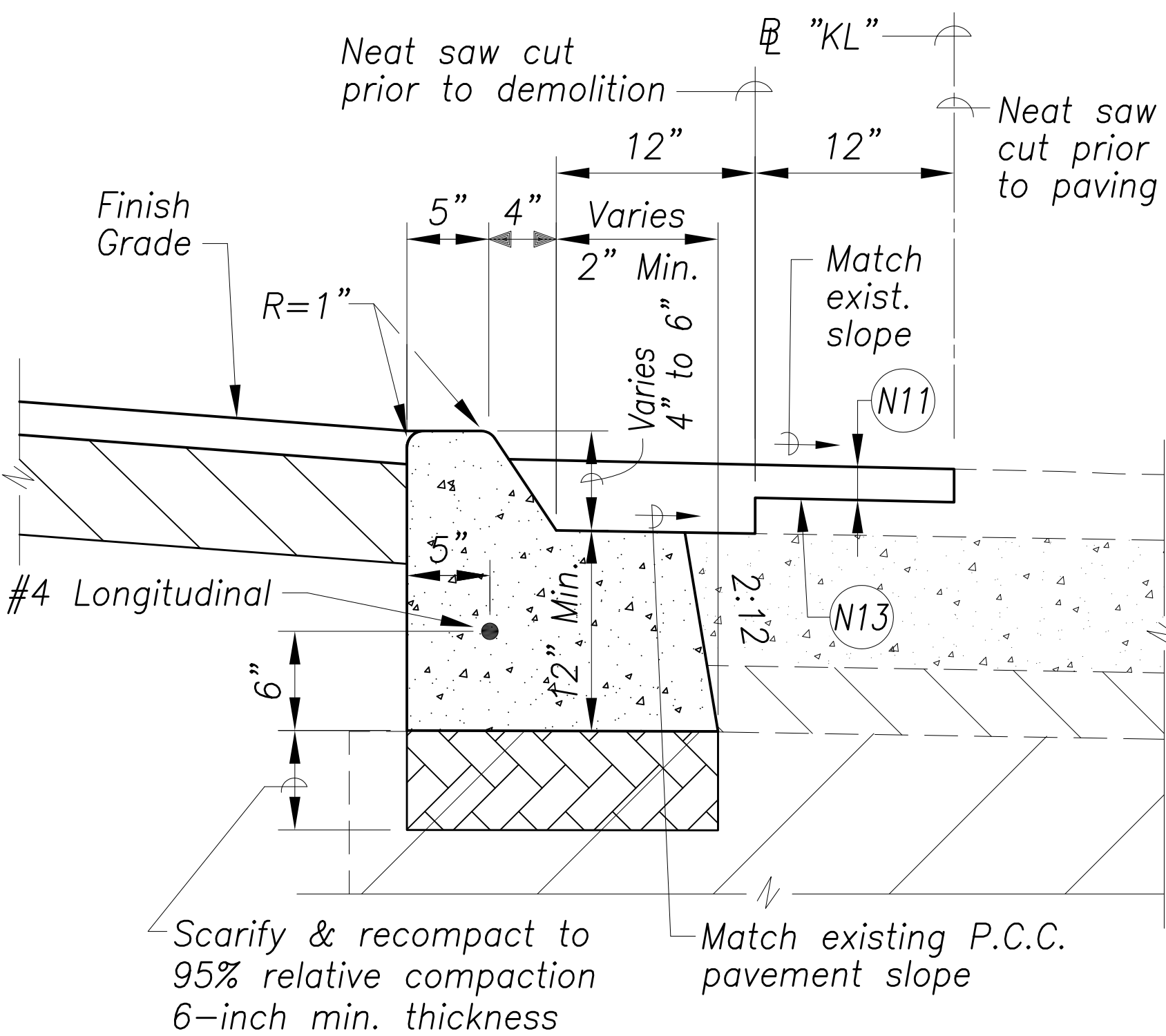
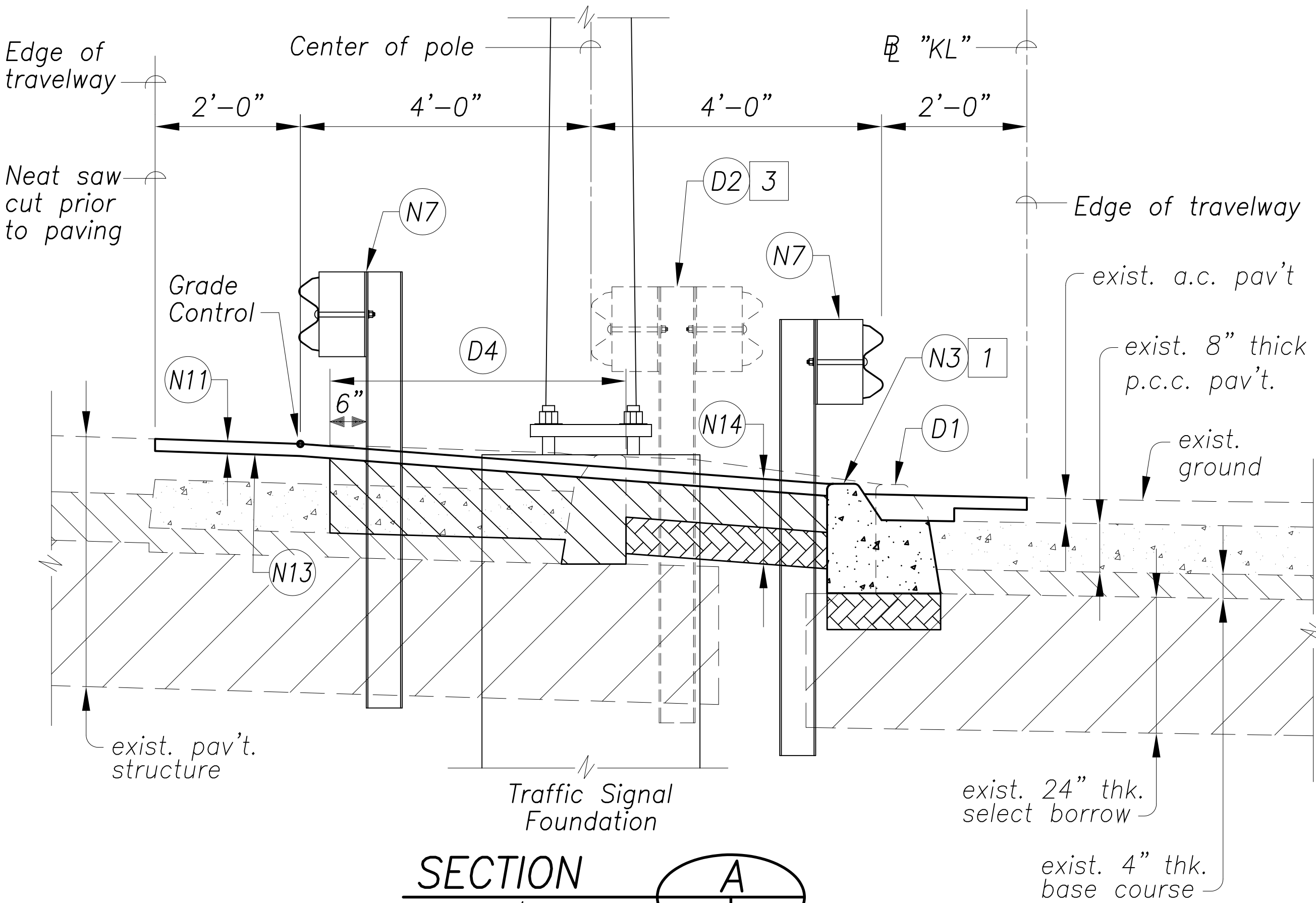
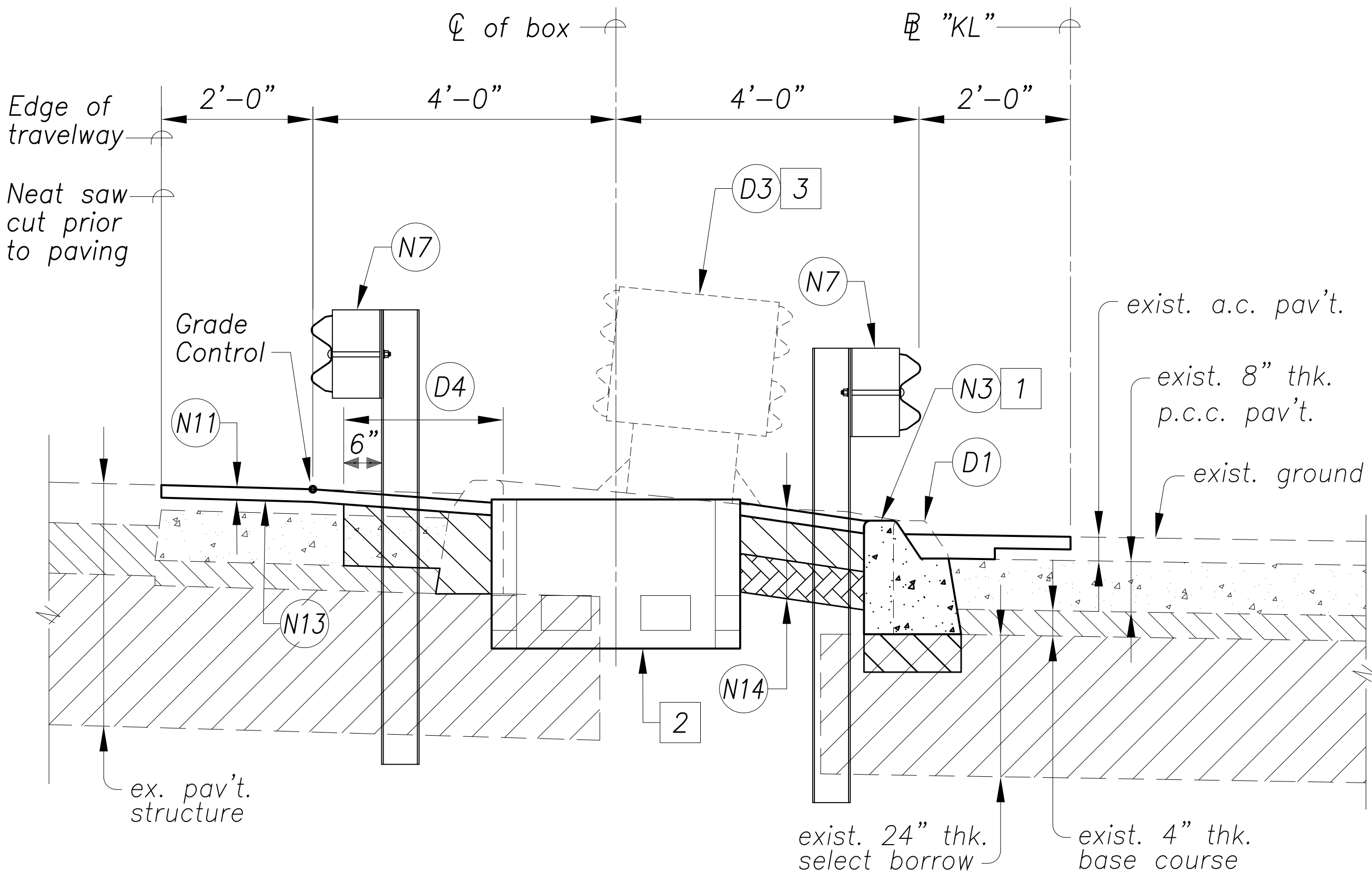
- The Contractor shall install construction and expansion joints in Curb, Type 2A Modified, to match existing joints in P.C.C. pavement.
- Type "B" traffic signal pullbox. Top of pull box shall be 1/4-inch above surrounding pavement.
- The Contractor shall clean salvaged material as required by the Engineer prior to delivery to DOT Halawa Baseyard. Salvage, cleaning, and delivery shall be incidental to the contract items.

Demolition Callouts:

- D1 Demolish and dispose of concrete curb.
- D2 Remove and salvage existing guardrail.
- D3 Remove and salvage terminal impact attenuator. Demolish and dispose of concrete pad for attenuator.
- D4 Demolish and dispose of concrete curb, asphalt concrete pavement, and P.C.C. pavement. Fill void with Aggregate Base Course.

Legend

- HMA Pavement State Mix. No. V
- Aggregate Base Course, 6-inch thick
- Scarify & re-compact to 95% relative compaction 6-inch thick



License Expiration Date: 04-30-22
THIS WORK WAS PREPARED BY ME OR UNDER MY SUPERVISION AND CONSTRUCTION OF THIS PROJECT WILL BE UNDER MY OBSERVATION AS DEFINED IN HAWAII TITLE 16, CHAPTER 115, RULES OF THE BOARD OF PROFESSIONAL ENGINEERS, ARCHITECTS AND SURVEYORS, STATE OF HAWAII.
Conrad Higashi

STATE OF HAWAII
DEPARTMENT OF TRANSPORTATION
HIGHWAYS DIVISION

TERMINAL IMPACT ATTENUATOR

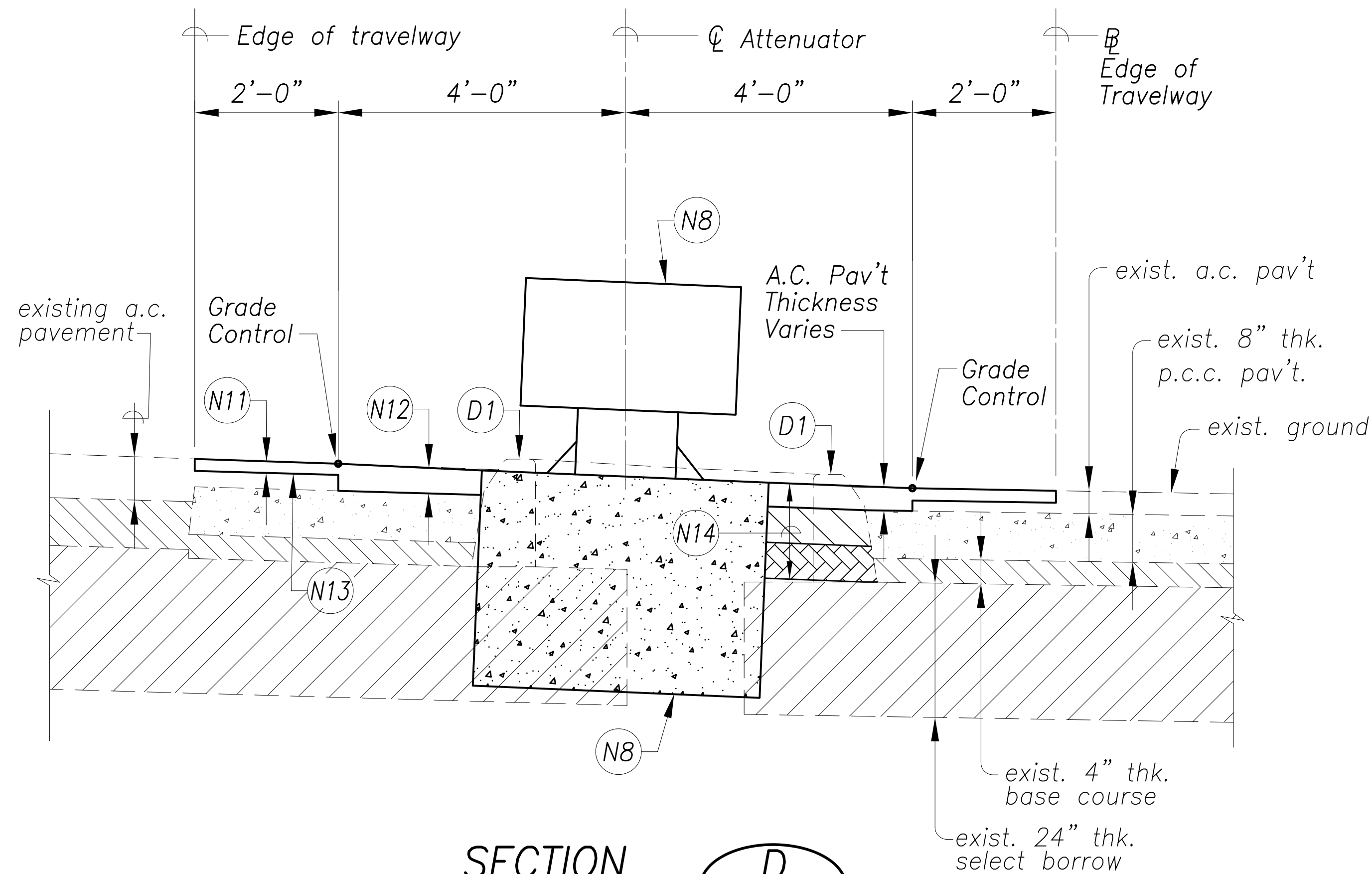
Kalaniana'ole Hwy & Kalaniki St

Traffic Signal Modernization,
Oahu, Phase 1
Federal-Aid Project No. STP-0300(163)
Scale: As shown Date: July 2020
SHEET No. R-19 OF 65 SHEETS

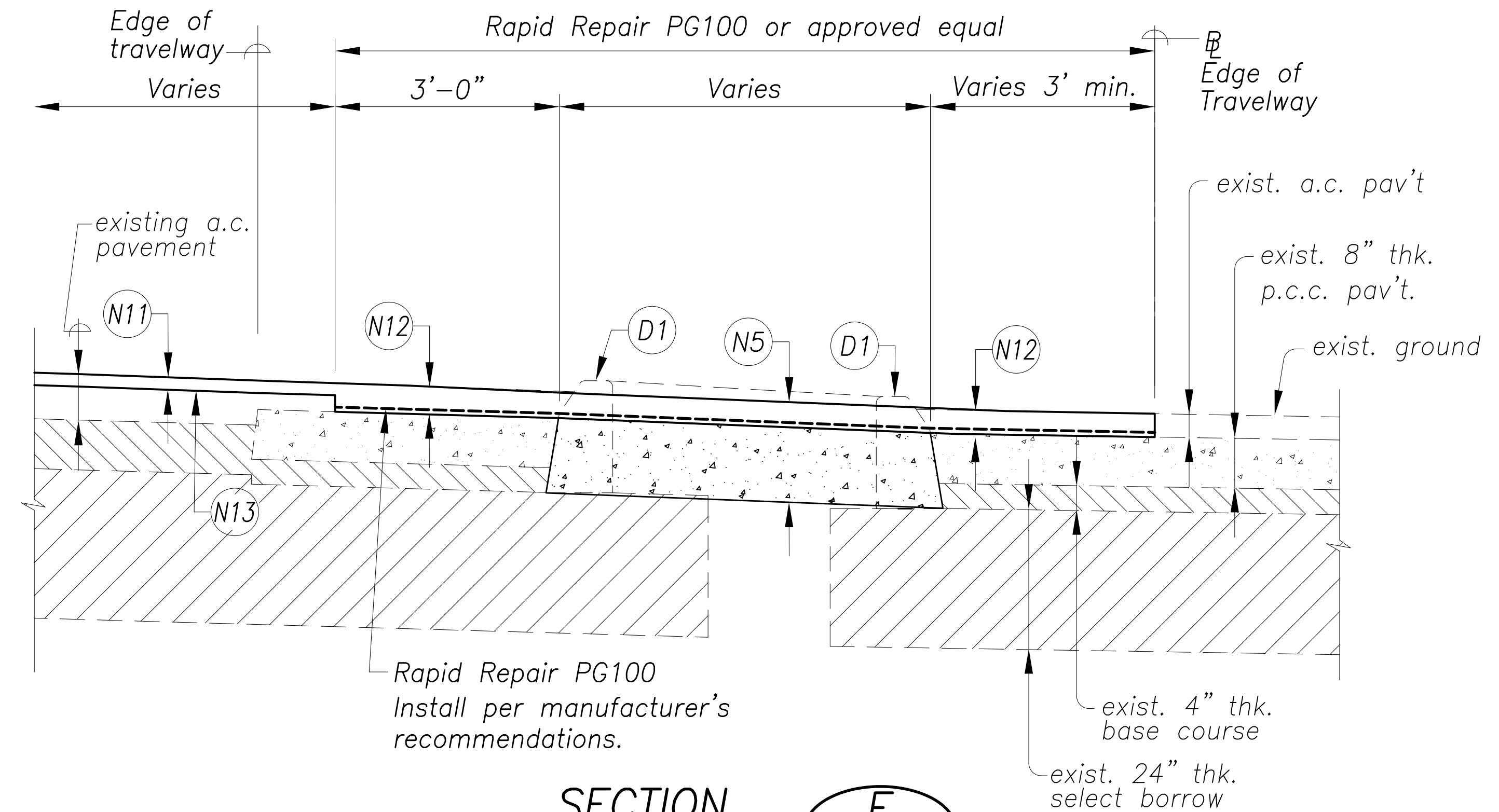
SURVEY PLOTTED BY	DATE
DRAWN BY	
DESIGNED BY	
QUANTITIES BY	
CHECKED BY	
ORIGINAL PLAN	No.

Aug 28, 2020-16:00m
N:\CAO\DWG\2015\1512-Traffic Signal Modernization @ Various Locations P&E\FINAL\049 Attenuator K1 (Section).dwg

FED. ROAD DIST. NO.	STATE	FED. AID PROJ. NO.	FISCAL YEAR	SHEET NO.	TOTAL SHEETS
HAWAII	HAW.	STP-0300(163)	2020	50	284



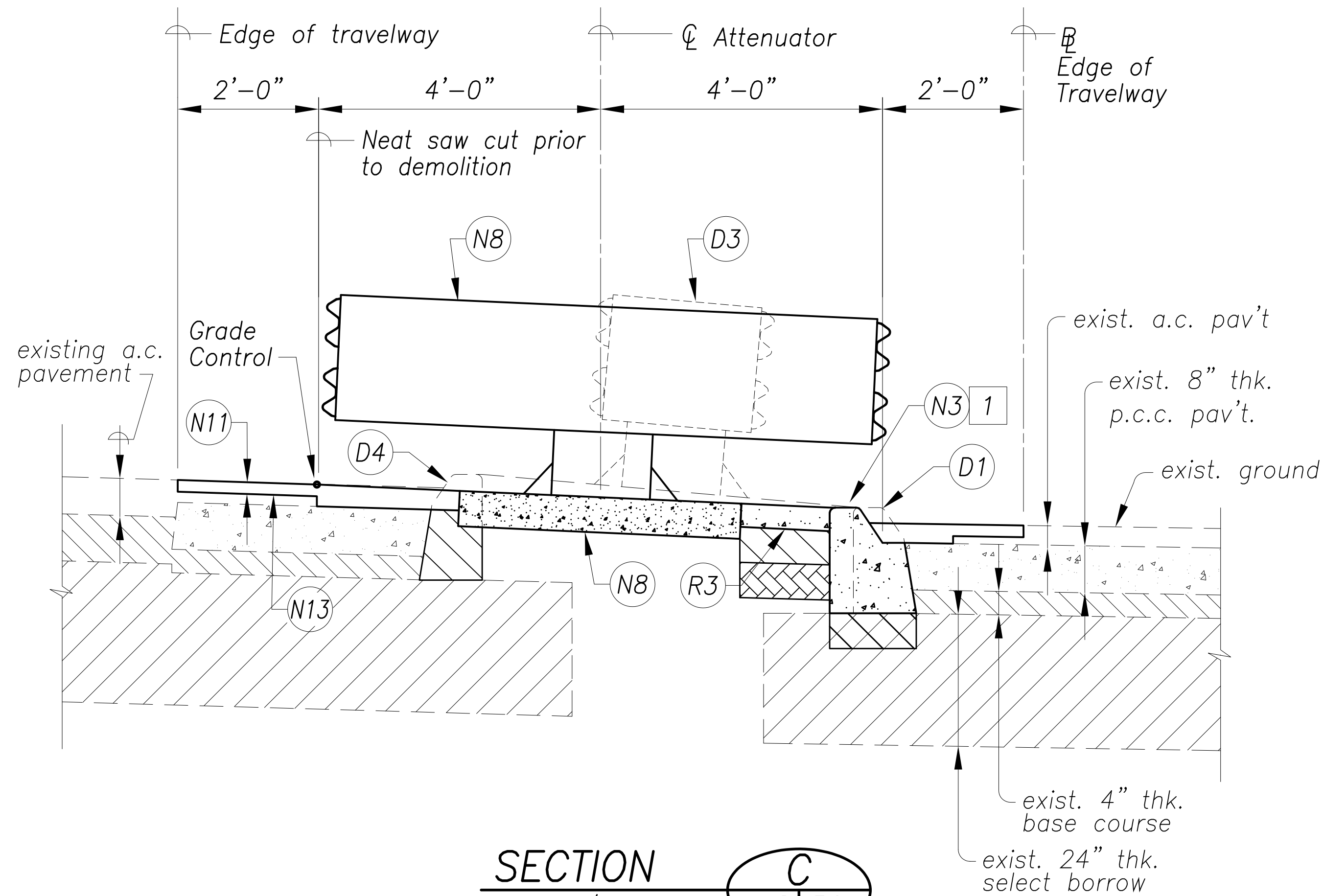
SECTION D
Scale: $\frac{3}{4}$ "=1'-0" 48 | 50



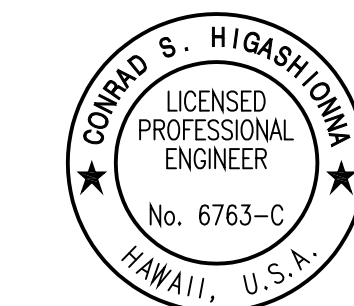
SECTION E
Scale: $\frac{3}{4}$ "=1'-0" 48 | 50

Legend

- HMA Pavement State Mix. No. V
- Aggregate Base Course, 6-inch thick
- Scarify & re-compact to 95% relative compaction 6-inch thick



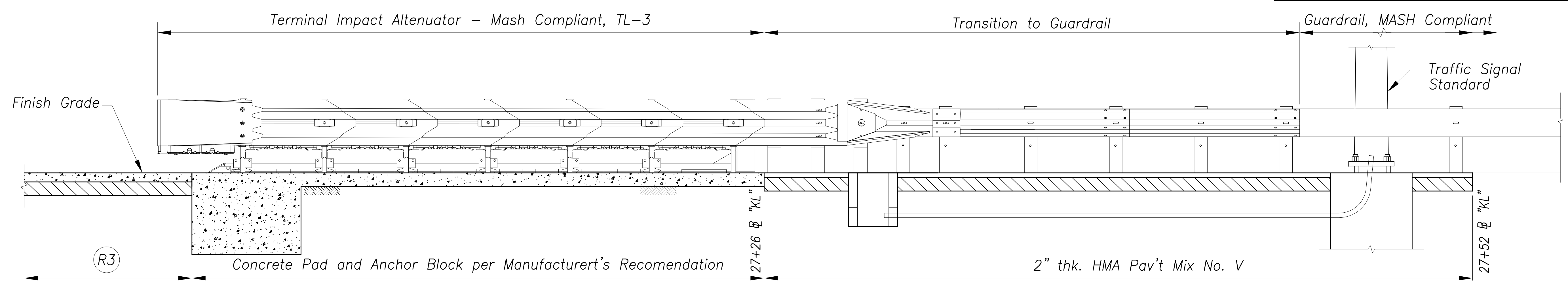
SECTION C
Scale: $\frac{3}{4}$ "=1'-0" 48 | 50



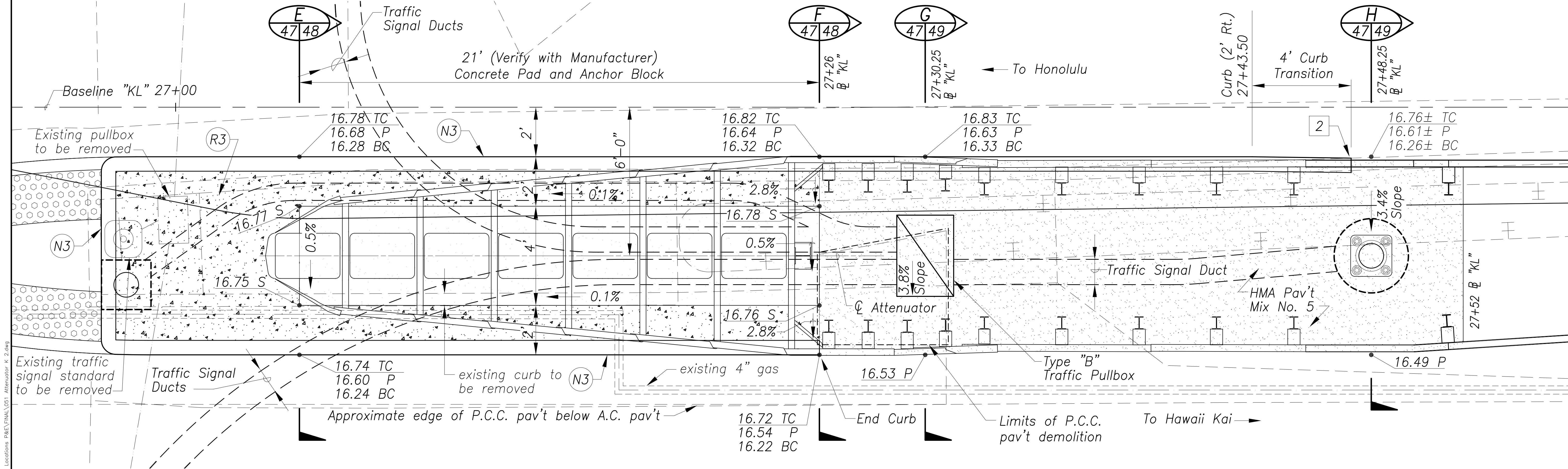
License Expiration Date: 04-30-22
THIS WORK WAS PREPARED BY ME OR UNDER MY SUPERVISION AND CONSTRUCTION OF THIS PROJECT WILL BE UNDER MY OBSERVATION AS DEFINED IN HAWAII TITLE 16, CHAPTER 115, RULES OF THE BOARD OF PROFESSIONAL ENGINEERS, ARCHITECTS AND SURVEYORS, STATE OF HAWAII.
Conrad Higashimura

STATE OF HAWAII
DEPARTMENT OF TRANSPORTATION
HIGHWAYS DIVISION
TERMINAL IMPACT ATTENUATOR
Kalaniana'ole Hwy & Kalaniki St
Traffic Signal Modernization,
Oahu, Phase 1
Federal-Aid Project No. STP-0300(163)
Scale: $\frac{3}{4}$ "=1'-0" Date: July 2020
SHEET No. R-20 OF 65 SHEETS

FED. ROAD DIST. NO.	STATE	FED. AID PROJ. NO.	FISCAL YEAR	SHEET NO.	TOTAL SHEETS
HAWAII	HAW.	STP-0300(163)	2020	51	284



ELEVATION – TERMINAL IMPACT ATTENUATOR
 Scale: 1/2"=1'-0"



- Legend**
- 18.41± P Existing Top Pavement Elevation
 - 18.36 S Finish Top Slab Elevation
 - 18.16 TC Finish Top Curb Elevation
 - 18.03 BC Existing Bottom Curb Elevation

SURVEY PLOTTED BY	DATE
DRAWN BY	
DESIGNED BY	
CHECKED BY	
NOTE BOOK	
QUANTITIES BY	
CHECKED BY	
No.	

Aug 28, 2020-16:00m
 N:\CAO\DWG\2015\1512-Traffic Signal Modernization @ Various Locations P&E\FINAL\051 Attenuator K 2.dwg

CONRAD S. HIGASHIOWA
 LICENSED PROFESSIONAL ENGINEER
 No. 6763-C
 HAWAII, U.S.A.

License Expiration Date 04-30-22

THIS WORK WAS PREPARED BY ME OR UNDER MY SUPERVISION AND CONSTRUCTION OF THIS PROJECT WILL BE UNDER MY OBSERVATION AS DEFINED IN HAW. TITLE 16, CHAPTER 115, RULES OF THE BOARD OF PROFESSIONAL ENGINEERS, ARCHITECTS AND SURVEYORS, STATE OF HAWAII.

Conrad Higashinoma

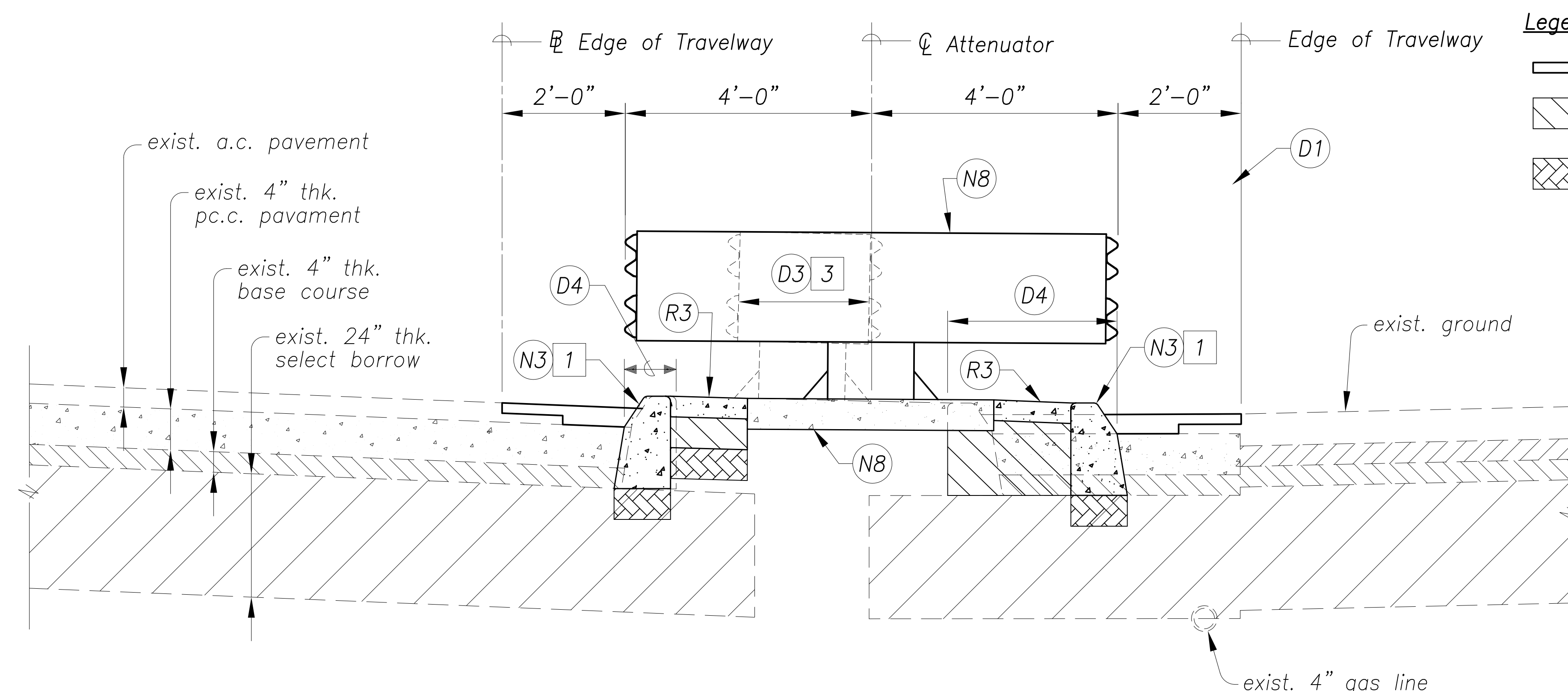
STATE OF HAWAII
 DEPARTMENT OF TRANSPORTATION
 HIGHWAYS DIVISION

TERMINAL IMPACT ATTENUATOR
Kalanianaʻole Hwy & Kalaniki St

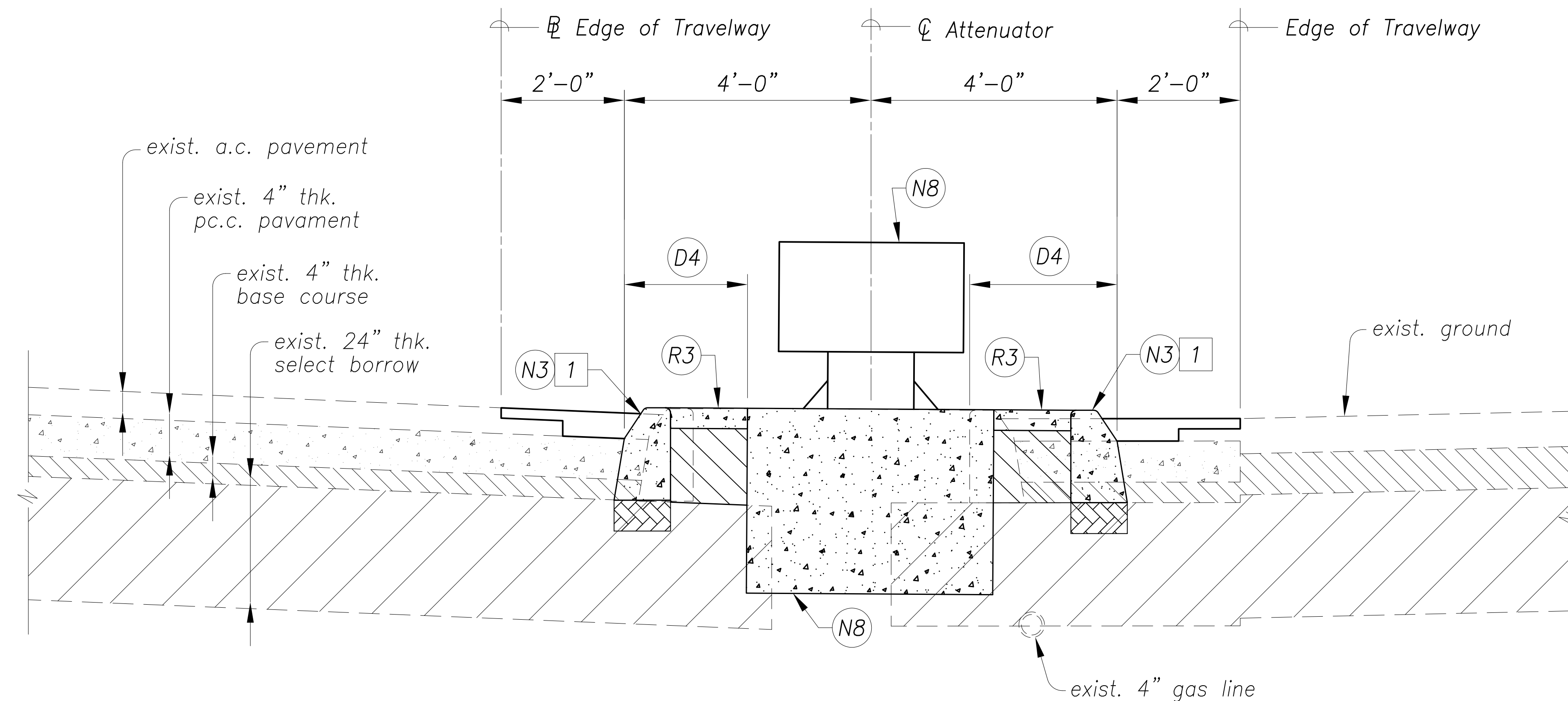
Traffic Signal Modernization,
 Oahu, Phase 1
 Federal-Aid Project No. STP-0300(163)
 Scale: 1/2"=1'-0" Date: July 2020
 SHEET No. R-21 OF 65 SHEETS

Aug 28, 2020 - 10:00am
N:\CAO\DWG\2015\1512-Traffic Signal Modernization @ Various Locations P&E\FINAL\052 Attenuator K 2 (Sections).dwg

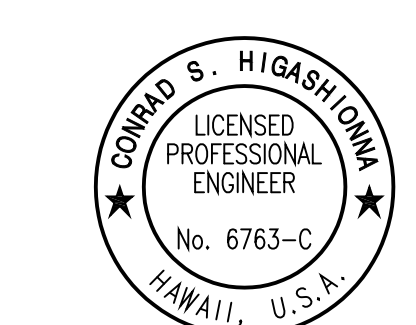
SURVEY PLOTTED BY	DATE
DRAWN BY	
DESIGNED BY	
QUANTITIES BY	
CHECKED BY	
ORIGINAL PLAN	
NOTE BOOK	
No.	



SECTION **F**
Scale: 3/4"=1'-0" 51|52



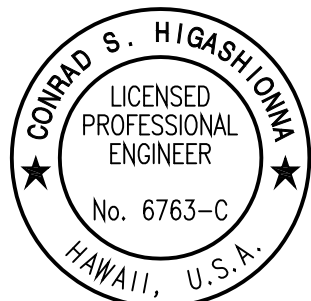
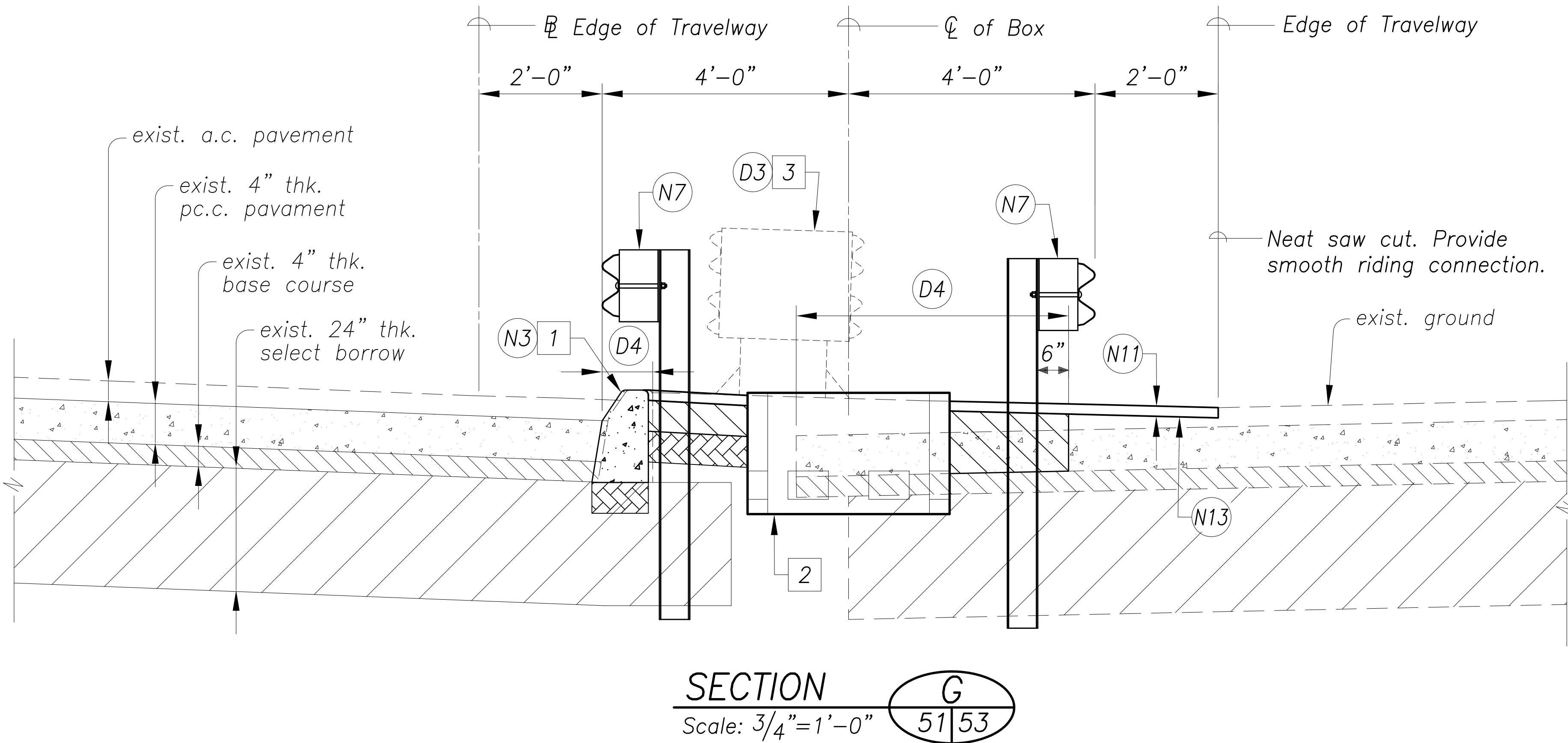
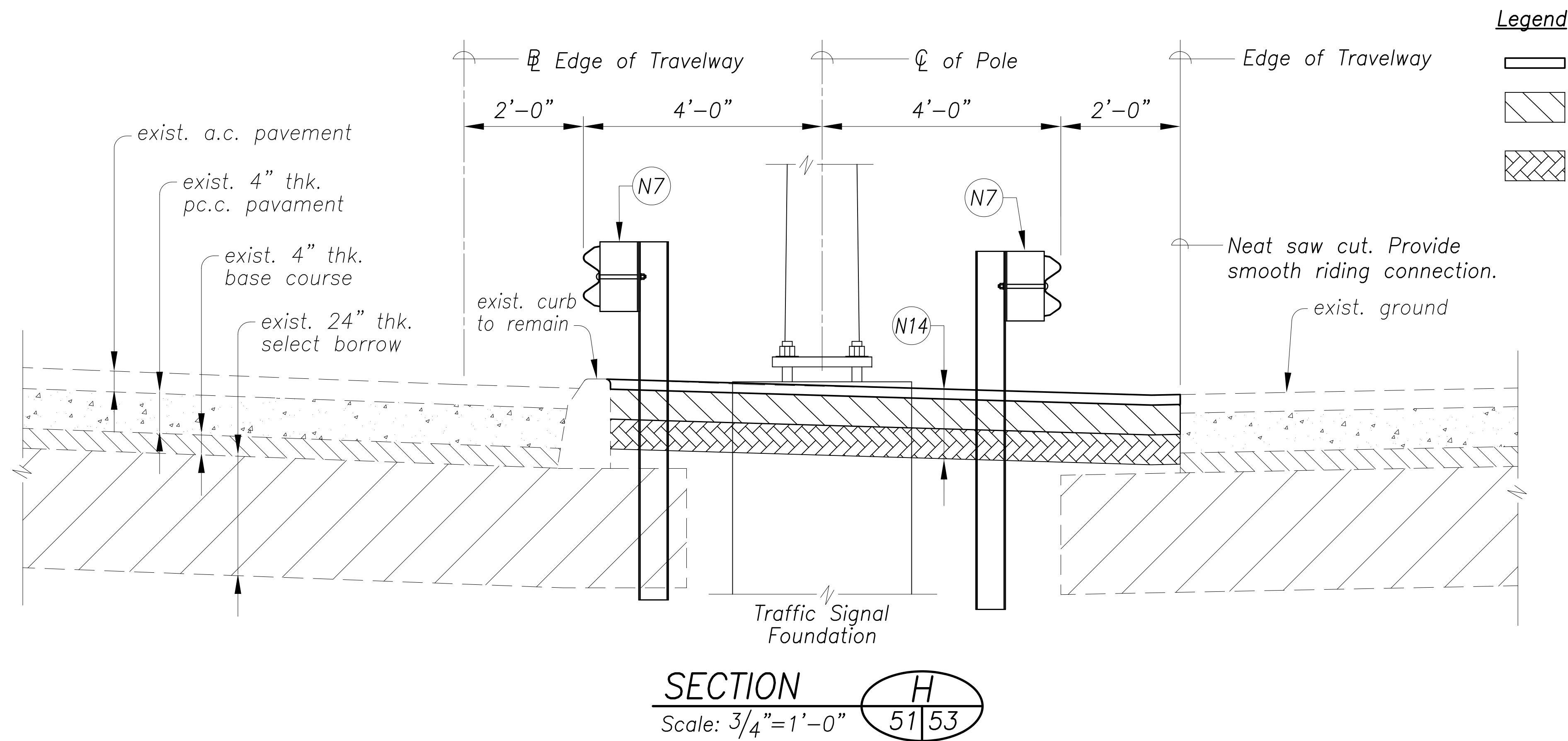
SECTION **E**
Scale: 3/4"=1'-0" 51|52



License Expiration Date 04-30-22
THIS WORK WAS PREPARED BY ME OR UNDER MY SUPERVISION AND CONSTRUCTION OF THIS PROJECT WILL BE UNDER MY OBSERVATION AS DEFINED IN HAWAII TITLE 16, CHAPTER 115, RULES OF THE BOARD OF PROFESSIONAL ENGINEERS, ARCHITECTS AND SURVEYORS, STATE OF HAWAII.
Conrad Higashimura

STATE OF HAWAII DEPARTMENT OF TRANSPORTATION HIGHWAYS DIVISION					
TERMINAL IMPACT ATTENUATOR					
Kalaniana'ole Hwy & Kalaniki St					
Traffic Signal Modernization, Oahu, Phase 1					
Federal-Aid Project No. STP-0300(163)					
Scale: 3/4"=1'-0"			Date: July 2020		
SHEET No. R-22 OF 65 SHEETS					

FED. ROAD DIST. NO.	STATE	FED. AID PROJ. NO.	FISCAL YEAR	SHEET NO.	TOTAL SHEETS
HAWAII	HAW.	STP-0300(163)	2020	53	284



License Expiration Date 04-30-22
THIS WORK WAS PREPARED BY ME OR UNDER MY SUPERVISION AND CONSTRUCTION OF THIS PROJECT WILL BE UNDER MY OBSERVATION AS DEFINED IN HAWAII TITLE 16, CHAPTER 115, RULES OF THE BOARD OF PROFESSIONAL ENGINEERS, ARCHITECTS AND SURVEYORS, STATE OF HAWAII.
Conrad Higashimura

STATE OF HAWAII
DEPARTMENT OF TRANSPORTATION
HIGHWAYS DIVISION

TERMINAL IMPACT ATTENUATOR

Kalanianaʻole Hwy & Kalaniki St

*Traffic Signal Modernization,
Oahu, Phase 1*

Federal-Aid Project No. STP-0300(163)
Scale: 3/4"=1'-0" Date: July 2020

SHEET No. R-23 OF 65 SHEETS

DATE	_____
SURVEY PLOTTED BY	_____
DRAWN BY	_____
DESIGNED BY	_____
QUANTITIES BY	_____
CHECKED BY	_____
ORIGINAL PLAN	_____
NOTE BOOK	_____
No.	_____

Aug 28, 2020-10:50am
N:\CAO\DWG\2015\1512-Traffic Signal Modernization @ Various Locations P&E\FINAL\053 Attenuator K 2 (Sections).dwg