

STANDARD PLANS SUMMARY

FED. ROAD DIST. NO.	STATE	FED. AID PROJ. NO.	FISCAL YEAR	SHEET NO.	TOTAL SHEETS
HAWAII	HAW.	STP-0300(163)	2020	2	284

STANDARD PLAN NO.	TITLE	DATE
B-01	NOTES & MISCELLANEOUS DETAILS	05/31/07
B-03	BACKFILL DETAILS AT EARTH RETAINING STRUCTURES	05/31/07
B-12	PRESTRESSED CONCRETE PILES & COMPRESSION SPLICE	05/31/07
	CAN DETAILS	
B-12A	PRESTRESSED CONCRETE PILES, PILE & COMPRESSION	05/31/07
	SPLICE CAN DETAILS & NOTES	
B-12B	PILE INTERACTION DIAGRAM	05/31/07
B-13	PRESTRESSED CONCRETE PILE BUILD-UP DETAILS	05/31/07

D-01	CATTLE GATE	05/31/07
D-02 ●	CHAIN LINK FENCE WITH TOPRAIL	05/31/07
D-03	CHAIN LINK FENCE WITHOUT TOPRAIL	05/31/07
D-04	WIRE FENCE WITH METAL POSTS	05/31/07
D-05 ●	TYPICAL DETAILS OF CURBS AND/OR GUTTERS	05/31/07
D-06 ●	TYPICAL DETAIL OF REINFORCED CONCRETE DROP DRIVEWAY	05/31/07
D-07 ●	CENTERLINE AND REFERENCE SURVEY MONUMENTS	05/31/07
D-08 ●	STREET SURVEY MONUMENT	05/31/07
D-15 ●	CONCRETE SIDEWALK	05/31/07
D-16	P.C.C. BUS PAD	05/31/07
D-17	P.C.C. BUS PAD	05/31/07
D-18	P.C.C. PAVEMENT LAYOUT	05/31/07
D-19 ●	P.C.C. PAVEMENT W/ PERMEABLE BASE JOINT DETAILS	05/31/07
D-20 ●	P.C.C. PAVEMENT W/ PERMEABLE BASE JOINT DETAILS	05/31/07
D-21 ●	P.C.C. LONGITUDINAL JOINT DETAILS	05/31/07
D-22 ●	P.C.C. CONNECTION TO CURBS AND GUTTERS	05/31/07
D-23 ●	JOINTS	05/31/07

L-01	TREE PLANTING	08/16/06
L-02	TREE PLANTING	08/16/06
L-03	TREE TRANSPLANTING	08/16/06
L-04	PALM PLANTING	08/16/06
L-05	SHRUB PLANTING	08/16/06
L-06	LANDSCAPE DETAILS	08/16/06
L-07	LANDSCAPE DETAILS	08/16/06
L-08	LANDSCAPE DETAILS	08/16/06
L-09	LANDSCAPE DETAILS	08/16/06
L-10	LANDSCAPE DETAILS	08/16/06
L-11	PLANTING NOTES	08/16/06
L-12	IRRIGATION DETAILS	08/16/06
L-13	IRRIGATION DETAILS	08/16/06
L-14	IRRIGATION DETAILS	08/16/06
L-15	IRRIGATION DETAILS	08/16/06
L-16	IRRIGATION DETAILS	08/16/06
L-17	IRRIGATION DETAILS	08/16/06
L-18	IRRIGATION DETAILS	08/16/06
L-19	IRRIGATION DETAILS	08/16/06
L-20	IRRIGATION DETAILS	08/16/06
L-21	IRRIGATION DETAILS	08/16/06
L-22	IRRIGATION DETAILS	08/16/06
L-23	IRRIGATION DETAILS	08/16/06
L-24	IRRIGATION NOTES	08/16/06

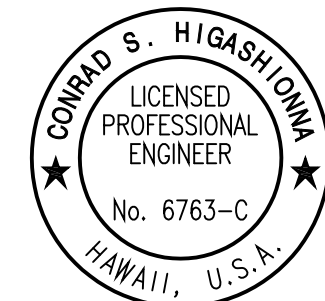
STANDARD PLAN NO.	TITLE	DATE
H-01A	TYPE A CATCH BASIN	05/31/07
H-01B	TYPE B CATCH BASIN	05/31/07
H-01C	TYPE C CATCH BASIN	05/31/07
H-01D	TYPE D CATCH BASIN	05/31/07
H-01E	CATCH BASIN SECTIONS	05/31/07
H-02A	TYPE A1 CATCH BASIN	05/31/07
H-02B	TYPE B2 CATCH BASIN	05/31/07
H-02C	TYPE C1 CATCH BASIN	05/31/07
H-02D	TYPE D1 CATCH BASIN	05/31/07
H-02E	CATCH BASIN SECTION	05/31/07
H-03	TYPE A, B, AND C STORM DRAIN MANHOLE	05/31/07
H-04	TYPE D STORM DRAIN MANHOLE	05/31/07
H-05	TYPICAL REINFORCING DETAILS FOR DRAINAGE STRUCTURES	05/31/07
H-06	TYPICAL REINFORCING DETAILS FOR DRAINAGE STRUCTURES	05/31/07
H-07	CATCH BASIN AND MANHOLE CASTINGS	05/31/07
H-08	TYPE 1A-9 AND 1A-9P GRATED DROP INLET	05/31/07
H-09	TYPE 2A-9 AND 2A-9P GRATED DROP INLET	05/31/07
H-10	TYPE A-9 OR A-9P STEEL FRAMES	05/31/07
H-11	TYPE A-9 AND A-9P STEEL GRATES	05/31/07
H-12	TYPE 61614P AND 1211214P GRATED DROP INLET	05/31/07
H-13	TYPE 61616P AND 1211216P GRATED DROP INLET	05/31/07
H-14	TYPE 61214P GRATED DROP INLET	05/31/07
H-15	TYPE 1211214, 1211214P, 1211216, 1211216P STEEL	05/31/07
	FRAME AND GRATES	
H-16	TYPE 61614, 61614P, 61616, 61616P STEEL FRAME	05/31/07
	AND GRATES	
H-17	TYPE 61214 STEEL FRAMES AND GRATES	05/31/07
H-18	TYPE 61214P STEEL GRATES	05/31/07
H-19	TYPE 61614B STEEL FRAME AND GRATES	05/31/07
H-20	CEMENT RUBBLE MASONRY STRUCTURES	05/31/07
H-21	CONCRETE AND CEMENT RUBBLE MASONRY STRUCTURES	05/31/07
H-22	INLET/OUTLET STRUCTURE	05/31/07
H-23	INLET/OUTLET STRUCTURE	05/31/07
H-24	FLARED END SECTION FOR CULVERTS	05/31/07
H-25	FLARED END SECTION FOR CULVERTS	05/31/07
H-26	CONCRETE SPILLWAY INLET	05/31/07
H-27	CAP COUPLING DETAILS STANDARD JOINT	05/31/07
H-28	REINFORCED CONCRETE COLLAR & JACKET	05/31/07
H-29	UNDERDRAIN CLEANOUT STEEL FRAME AND COVER	05/31/07
H-30	UNDERDRAIN CONNECTION TO DRAINAGE STRUCTURE	05/31/07

TE-01 ●	SIGN HEIGHT AND LOCATION	07/11/08
TE-1A ●	SIGN INSTALLATION	07/11/08
TE-02A ●	GALVANIZED FLANGED CHANNEL SIGN POST MOUNTING	05/31/07
TE-02B ●	GALVANIZED FLANGED CHANNEL SIGN POST MOUNTING	05/31/07
TE-02C ●	GALVANIZED FLANGED CHANNEL SIGN POST MOUNTING	05/31/07
TE-03A ●	GALVANIZED SQUARE TUBE SIGN POST MOUNTING	05/31/07
TE-03B ●	GALVANIZED SQUARE TUBE SIGN POST MOUNTING	05/31/07
TE-04 ●	REGULATORY SIGNS	07/11/08
TE-05 ●	WARNING SIGNS	07/11/08
TE-06 ●	MISCELLANEOUS SIGNS	07/11/08
TE-07 ●	CONSTRUCTION SIGNS	07/11/08
TE-08 ●	MISCELLANEOUS INTERSECTION SIGNS	07/11/08

STANDARD PLAN NO.	TITLE	DATE
TE-09 ●	BIKE ROUTE SIGN & SUPPLEMENTARY PLATES	07/11/08
TE-10 ●	INTERSTATE ROUTE MARKER	07/11/08
TE-11 ●	STATE ROUTE MARKER AND AUXILIARY MARKERS	07/11/08
TE-12 ●	STATE ROUTE MARKER AND BORDER DETAIL FOR	07/11/08
	GUIDE SIGNS	
TE-12A ●	ROUTE SIGN ASSEMBLIES	07/11/08
TE-13 ●	STREET NAME SIGN ON MAST ARM	07/11/08
TE-14 ●	MISCELLANEOUS REFLECTOR MARKERS	07/11/08
TE-15 ●	OBJECT MARKERS	07/11/08
TE-16	MILE POSTS	07/11/08
TE-17A	CANTILEVER OVERHEAD SIGN ELEVATION & DETAILS	05/31/07
TE-17B	CANTILEVER SIGN FRAME DETAIL AND SECTION	05/31/07
TE-17C	CANTILEVER SIGN FRAME DETAIL	05/31/07
TE-17D	CANTILEVER SIGN FRAME SECTION	05/31/07
TE-17E	CANTILEVER SIGN FRAME DETAILS	05/31/07
TE-18A	TWO POST OVERHEAD SIGN FRAME ELEVATIONS	05/31/07
TE-18B	TWO POST SIGN FRAMING PLAN SECTION	05/31/07
TE-18C	TWO POST SIGN FRAMING SECTIONS AND DETAILS	05/31/07
TE-18D	TWO POST SIGN FRAME DETAILS	05/31/07
TE-18E	TWO POST SIGN FRAME DETAILS	05/31/07
TE-19A	OVERHEAD SIGN FRAMING SCHEDULE	05/31/07
TE-19B	SIGN POST DRILLED SHAFT FOUNDATION	05/31/07
TE-19C	SPREAD FOOTING	05/31/07
TE-19D	SIGN FRAME FOUNDATION SCHEDULE	05/31/07
TE-19D.1	SIGN FRAME FOUNDATION SCHEDULE	05/31/07
TE-19D.2	SIGN FRAME FOUNDATION SCHEDULE	05/31/07
TE-19D.3	SIGN FRAME FOUNDATION SCHEDULE	05/31/07
TE-19D.4	SIGN FRAME FOUNDATION SCHEDULE	05/31/07
TE-19D.5	SIGN FRAME FOUNDATION SCHEDULE	05/31/07
TE-19E	ANCHORAGE DETAILS	05/31/07
TE-19F	ANCHORAGE DETAILS	05/31/07
TE-19G	MISCELLANEOUS SIGN FRAME DETAILS	05/31/07
TE-19H	LUMINAIRE WALKWAY SUPPORT	05/31/07
TE-19J	FIXED MESSAGE LUMINAIRE SUPPORT	05/31/07
TE-19K	MISCELLANEOUS SIGN DETAILS	05/31/07
TE-19L	MISCELLANEOUS SIGN DETAILS	05/31/07
TE-19M	MISCELLANEOUS SIGN FRAME DETAILS	05/31/07
TE-20	SUPPORTS FOR GROUND MOUNTED GUIDE SIGN	05/31/07
TE-20A	SUPPORTS FOR GROUND MOUNTED GUIDE SIGN	05/31/07
TE-20B	SUPPORTS FOR GROUND MOUNTED GUIDE SIGN	05/31/07
TE-20C	SUPPORTS FOR GROUND MOUNTED GUIDE SIGN	05/31/07
TE-21A	SIGN BREAKAWAY MOUNTS	05/31/07
TE-21B	SIGN BREAKAWAY MOUNTS	05/31/07
TE-22	LAMINATED ALUMINUM SIGN PANELS (OVERHEAD)	05/31/07
TE-23	LAMINATED ALUMINUM SIGN PANELS (GROUND MOUNTED)	07/11/08
TE-24	SOLID ALUMINUM EXTRUDED SIGN PANEL AND	05/31/07
	ACCESSORY DETAILS	
TE-25	GUIDE SIGNS LUMINAIRE MOUNTINGS	05/31/07
TE-26 ●	RAISED PAVEMENT MARKERS AND STRIPING	07/11/08
TE-27 ●	RAISED PAVEMENT MARKERS AND STRIPING	07/11/08
TE-28 ●	ENTRANCE AND EXIT PAVEMENT MARKINGS	07/11/08
TE-28A ●	MISCELLANEOUS PAVEMENT MARKINGS	07/11/08
TE-29 ●	PAVEMENT ARROWS AND SYMBOLS	07/11/08
TE-30 ●	PAVEMENT ALPHABETS, NUMBERS & SYMBOLS	07/11/08
TE-31 ●	PAVEMENT ALPHABETS, NUMBERS & SYMBOLS	07/11/08

STANDARD PLAN NO.	TITLE	DATE
TE-32 ●	TYPE I & II TRAFFIC SIGNAL SYSTEM MISC. DETAILS	05/31/07
TE-33 ●	TYPE II TRAFFIC SIGNAL SYSTEM	08/16/06
TE-33A.1 ●	TYPE II TRAFFIC SIGNAL STANDARD	05/31/07
TE-33A.2 ●	TYPE II TRAFFIC SIGNAL STANDARD	05/31/07
TE-34 ●	LOOP DETECTOR DETAILS	07/11/08
TE-35 ●	LOOP DETECTORS & DUCT DETAILS	07/11/08
TE-36 ●	TRAFFIC SIGNAL DETAILS	07/11/08
TE-37 ●	PULLBOX & COVER DETAILS	07/11/08
TE-37A ●	TYPE "A" TRAFFIC PULLBOX	05/31/07
TE-37B ●	TYPE "A" TRAFFIC PULLBOX REINFORCING	05/31/07
TE-37C ●	TYPE "B" TRAFFIC PULLBOX	05/31/07
TE-37D ●	TYPE "B" TRAFFIC PULLBOX REINFORCING	05/31/07
TE-37E ●	TYPE "B" TRAFFIC PULLBOX FOUNDATION	05/31/07
TE-37F ●	TYPE "C" TRAFFIC PULLBOX	05/31/07
TE-37G ●	TYPE "C" TRAFFIC PULLBOX REINFORCING	05/31/07
TE-37H ●	TYPE "C" TRAFFIC PULLBOX FOUNDATION	05/31/07
TE-37J ●	TRAFFIC PULLBOX COVER AND DETAILS	05/31/07
TE-38 ●	TYPE III TRAFFIC SIGNAL STANDARD	05/31/07
TE-38A.1 ●	TYPE III TRAFFIC SIGNAL STANDARD	05/31/07
TE-38A.2 ●	TYPE III TRAFFIC SIGNAL STANDARD	05/31/07
TE-39	METAL GUARDRAIL CONNECTION TO CONCRETE BARRIER	07/11/08
TE-40	CONCRETE BARRIER TRANSITION	05/31/07
TE-40A	CONCRETE BARRIER TRANSITION SECTIONS	05/31/07
TE-41	GUARDRAIL TYPE 4 (RIGID BARRIER)	05/31/07
TE-42 ●	PORTABLE CONCRETE BARRIER	05/31/07
TE-43 ●	PORTABLE CONCRETE BARRIER	05/31/07
TE-44	GUARDRAIL TYPE 4 MISCELLANEOUS DETAILS	07/11/08
TE-45 ●	BARRICADES	07/11/08
TE-46	DELINEATION & PAVEMENT MARKINGS AT NARROW BRIDGES	07/11/08
TE-47	HIGHWAY LIGHT STANDARD	05/31/07

NOTE:  
STANDARD PLANS APPLICABLE TO THIS PROJECT ARE INDICATED BY A " ● " NEXT TO THE STANDARD PLAN NO. (FOR EXAMPLE: D-07 ● )



THIS WORK WAS PREPARED BY ME OR UNDER MY SUPERVISION AND CONSTRUCTION OF THIS PROJECT WILL BE UNDER MY OBSERVATION AS DEFINED IN HAW. TITLE 16, CHAPTER 115, RULES OF THE BOARD OF PROFESSIONAL ENGINEERS, ARCHITECTS AND SURVEYORS, STATE OF HAWAII.  
Conrad Higashinoma

STATE OF HAWAII  
DEPARTMENT OF TRANSPORTATION  
HIGHWAYS DIVISION  
  
**STANDARD PLANS SUMMARY**  
  
*Traffic Signal Modernization,  
Oahu, Phase 1*  
*Federal-Aid Project No. STP-0300(163)*  
Scale: none Date: July 2020  
SHEET No. 1 OF 1 SHEETS

ORIGINAL PLAN	SURVEY PLOTTED BY	DATE
	DRAWN BY	
	DESIGNED BY	
	CHECKED BY	
NOTE BOOK	QUANTITIES BY	
	CHECKED BY	
No.		

Aug 28, 2020--5:50pm  
N:\CAO\DWG\2015\1512-Traffic Signal Modernization @ Various Locations P&E\FINAL\002 Standard Plans Summary.dwg