

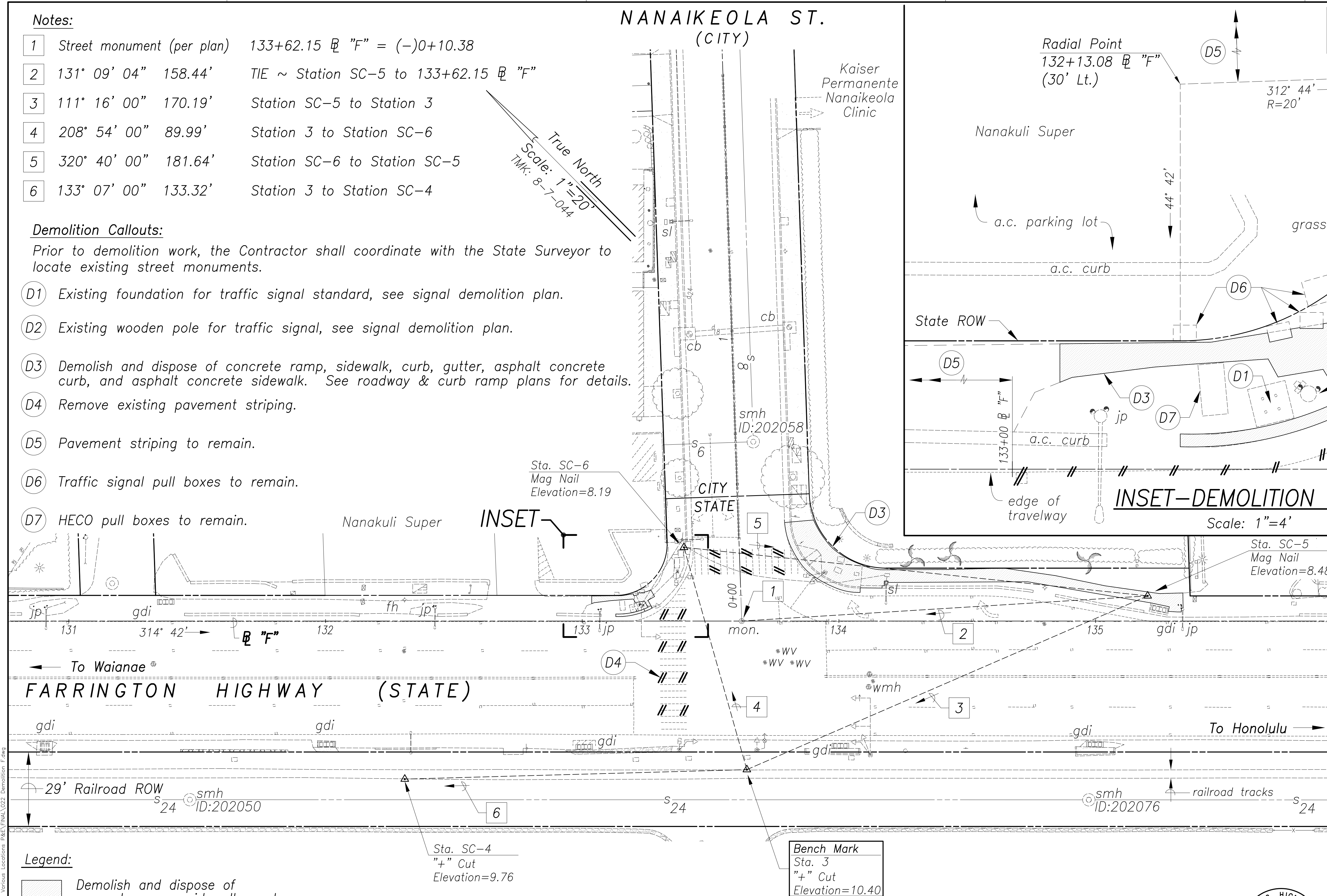
Notes:

- 1 Street monument (per plan) 133+62.15 @ "F" = (-)0+10.38
- 2 131° 09' 04" 158.44' TIE ~ Station SC-5 to 133+62.15 @ "F"
- 3 111° 16' 00" 170.19' Station SC-5 to Station 3
- 4 208° 54' 00" 89.99' Station 3 to Station SC-6
- 5 320° 40' 00" 181.64' Station SC-6 to Station SC-5
- 6 133° 07' 00" 133.32' Station 3 to Station SC-4

Demolition Callouts:

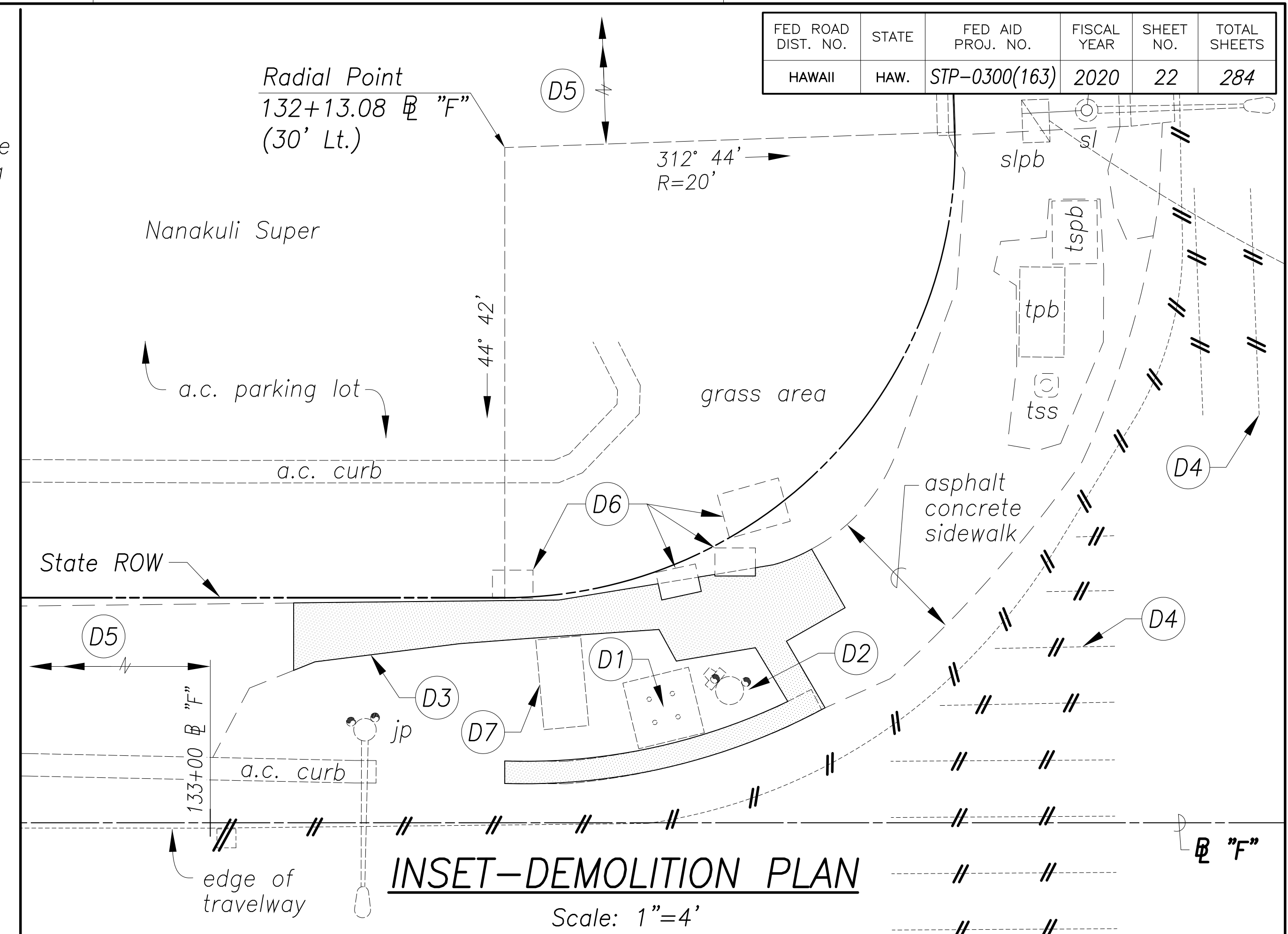
Prior to demolition work, the Contractor shall coordinate with the State Surveyor to locate existing street monuments.

- D1 Existing foundation for traffic signal standard, see signal demolition plan.
- D2 Existing wooden pole for traffic signal, see signal demolition plan.
- D3 Demolish and dispose of concrete ramp, sidewalk, curb, gutter, asphalt concrete curb, and asphalt concrete sidewalk. See roadway & curb ramp plans for details.
- D4 Remove existing pavement striping.
- D5 Pavement striping to remain.
- D6 Traffic signal pull boxes to remain.
- D7 HECO pull boxes to remain.



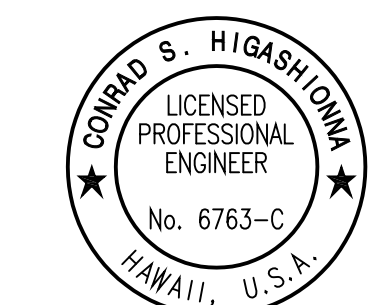
Legend:

- Demolish and dispose of concrete ramp, sidewalk, curb, gutter, asphalt concrete curb, and asphalt concrete sidewalk.
- Remove existing pavement striping



DATE	_____
SURVEY PLOTTED BY	_____
DRAWN BY	_____
DESIGNED BY	_____
QUANTITIES BY	_____
CHECKED BY	_____
ORIGINAL PLAN	_____
NOTE BOOK	_____
No.	_____

Aug. 28, 2020 - 8:00am
N:\CADD\DWG\2015\1512-Traffic Signal Modernization @ Various Locations P&E\FINAL\022 Demolition F.dwg



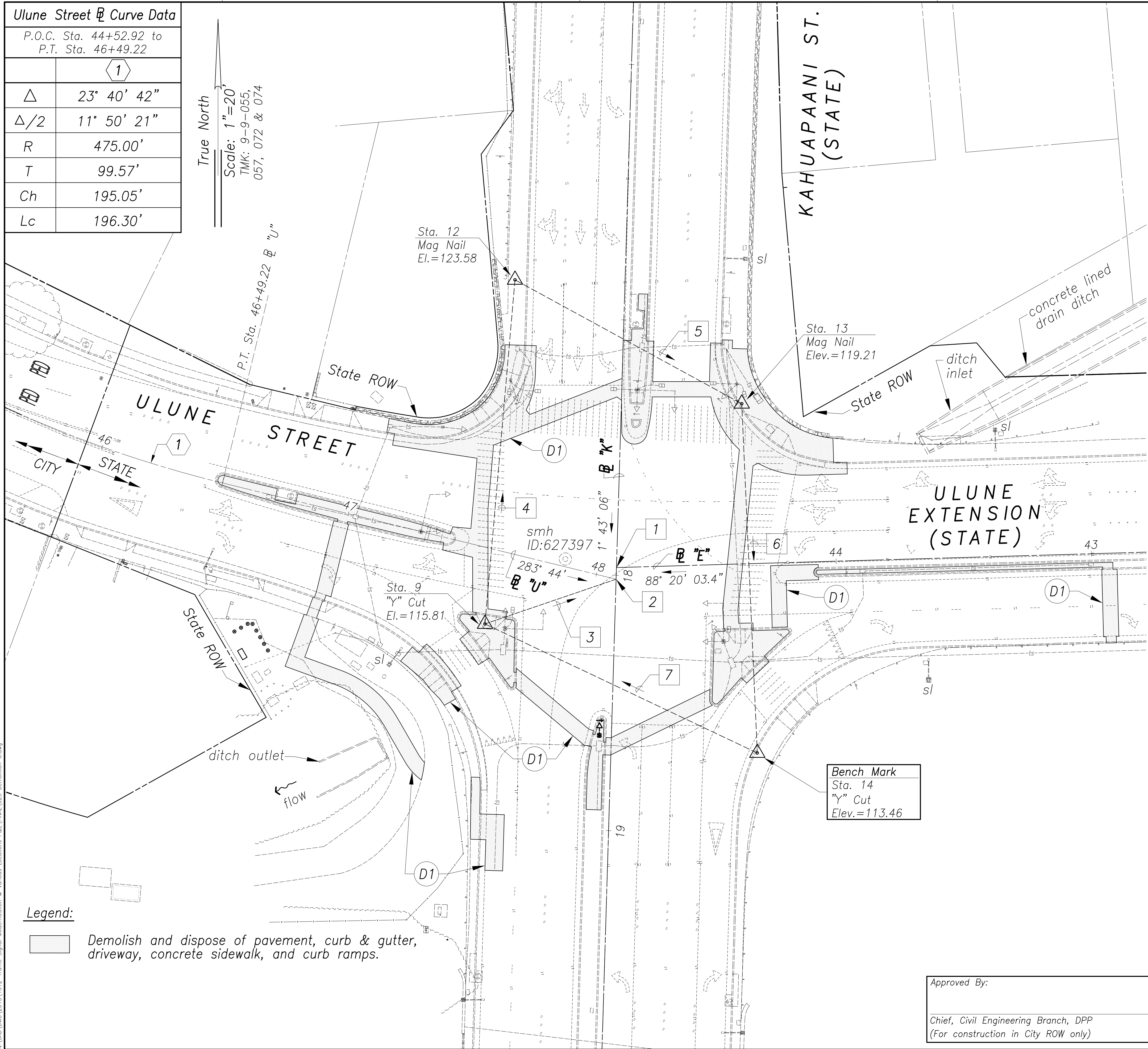
License Expiration Date 04-30-22
THIS WORK WAS PREPARED BY ME OR UNDER MY SUPERVISION AND CONSTRUCTION OF THIS PROJECT WILL BE UNDER MY OBSERVATION AS DEFINED IN HAWAII TITLE 16, CHAPTER 115, RULES OF THE BOARD OF PROFESSIONAL ENGINEERS, ARCHITECTS AND SURVEYORS, STATE OF HAWAII.
Conrad Higashimura

STATE OF HAWAII
DEPARTMENT OF TRANSPORTATION
HIGHWAYS DIVISION
DEMOLITION PLAN
Farrington Hwy & Nanaikeola St
Traffic Signal Modernization,
Oahu, Phase 1
Federal-Aid Project No. STP-0300(163)
Scale: As Shown Date: July 2020
SHEET No. D-9 OF 17 SHEETS

Ulune Street @ Curve Data	
P.O.C. Sta. 44+52.92 to P.T. Sta. 46+49.22	
	①
Δ	23° 40' 42"
$\Delta/2$	11° 50' 21"
R	475.00'
T	99.57'
Ch	195.05'
Lc	196.30'

True North

Scale: 1"=20'
TMK: 9-9-055,
057, 072 & 074



FED. ROAD DIST. NO.	STATE	FED. AID PROJ. NO.	FISCAL YEAR	SHEET NO.	TOTAL SHEETS
HAWAII	HAW.	STP-0300(163)	2020	23	284

Notes:

- Intersection 17+97 @ "K" = 44+86.09 @ "E"
- Intersection 18+01.56 @ "K" = 48+07.93 @ "U"
- 251° 10' 45.49" 54.25' Tie~Sta. 9 to 18+01.56 @ "K"
- 184° 59' 12" 135.21' Station 9 to Station 12
- 298° 37' 58" 101.18' Station 12 to Station 13
- 357° 27' 13" 136.86' Station 13 to Station 14
- 115° 20' 44" 118.00' Station 14 to Station 9

Demolition Callouts:

Prior to demolition work, the Contractor shall coordinate with the State Surveyor to locate existing street monuments. For traffic signal demolition, see signal demolition plans.

- D1 Approximate limits of demolition of concrete sidewalk, ramps, driveway, curb, gutter, and restoration of asphalt concrete pavement. See roadway and curb ramp plans for details.

SURVEY PLOTTED BY	DATE
DRAWN BY	
DESIGNED BY	
QUANTITIES BY	
CHECKED BY	
ORIGINAL PLAN	
NOTE BOOK	
No.	

Aug. 28, 2020-8:00pm
N:\CAO\DWG\2015\1512-Traffic Signal Modernization @ Various Locations P&E\FINAL\023 Demolition U.dwg

Legend:

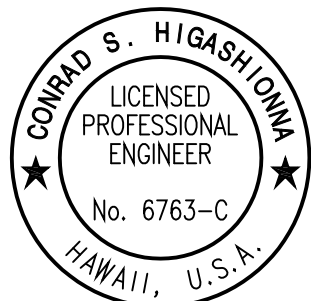


Demolish and dispose of pavement, curb & gutter, driveway, concrete sidewalk, and curb ramps.

Approved By:

Chief, Civil Engineering Branch, DPP
(For construction in City ROW only)

Date



License Expiration Date 04-30-22
THIS WORK WAS PREPARED BY ME OR UNDER MY SUPERVISION AND CONSTRUCTION OF THIS PROJECT WILL BE UNDER MY OBSERVATION AS DEFINED IN HAWAII TITLE 16, CHAPTER 115, RULES OF THE BOARD OF PROFESSIONAL ENGINEERS, ARCHITECTS AND SURVEYORS, STATE OF HAWAII.

Conrad Higashimura

STATE OF HAWAII
DEPARTMENT OF TRANSPORTATION
HIGHWAYS DIVISION

DEMOLITION PLAN

Kahuapaani St & Ulune St


Traffic Signal Modernization,
Oahu, Phase 1

Federal-Aid Project No. STP-0300(163)

Scale: 1"=20' Date: July 2020

SHEET No. D-10 OF 17 SHEETS

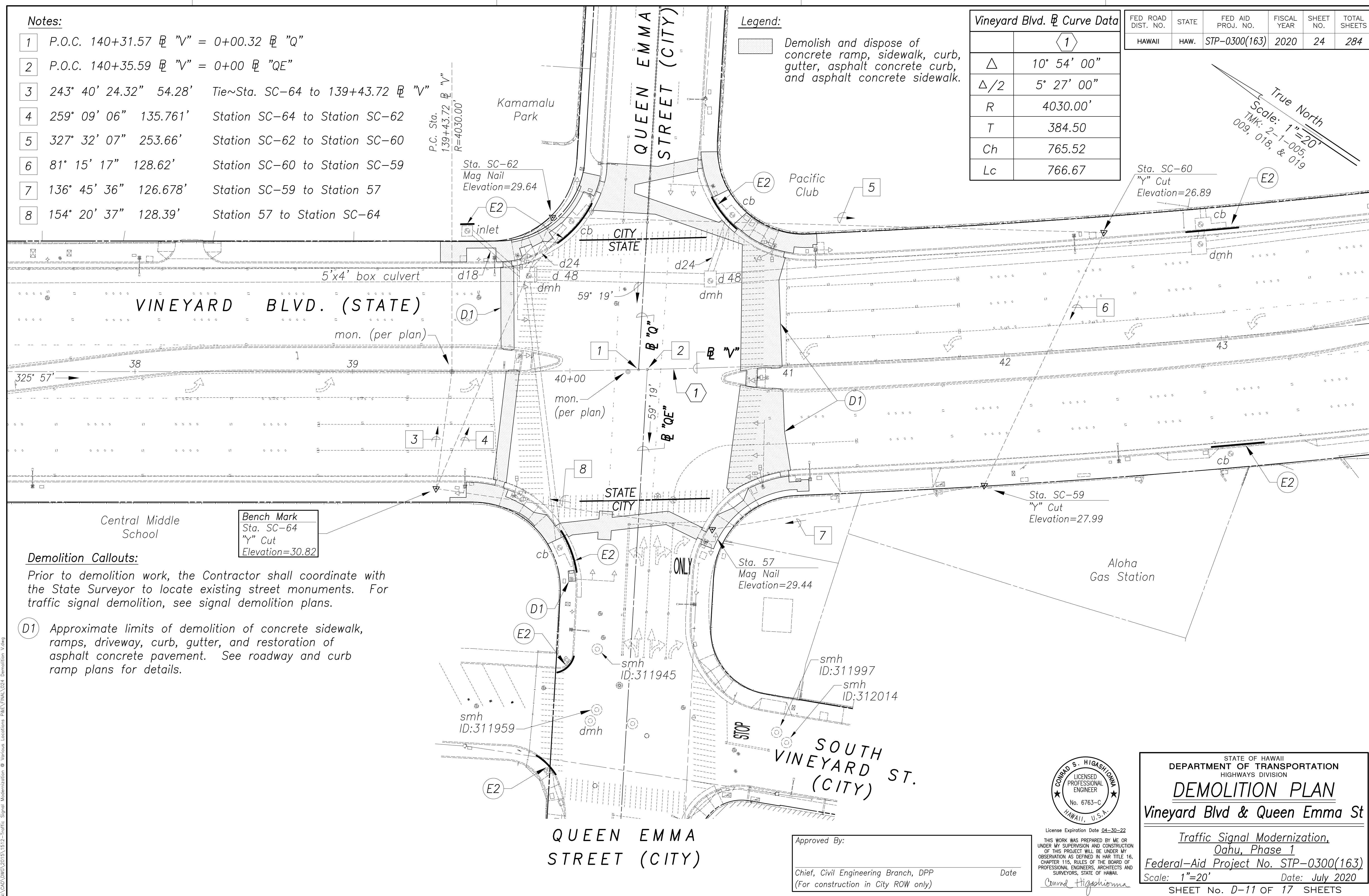
1	P.O.C. 140+31.57 @ "V" = 0+00.32 @ "Q"
2	P.O.C. 140+35.59 @ "V" = 0+00 @ "QE"
3	243° 40' 24.32" 54.28' Tie~Sta. SC-64 to 139+43.72 @ "V"
4	259° 09' 06" 135.761' Station SC-64 to Station SC-62
5	327° 32' 07" 253.66' Station SC-62 to Station SC-60
6	81° 15' 17" 128.62' Station SC-60 to Station SC-59
7	136° 45' 36" 126.678' Station SC-59 to Station 57
8	154° 20' 37" 128.39' Station 57 to Station SC-64

	Demolish and dispose of concrete ramp, sidewalk, curb, gutter, asphalt concrete curb, and asphalt concrete sidewalk.
---	--

Vineyard Blvd. @ Curve Data	
	1
Δ	10° 54' 00"
$\Delta/2$	5° 27' 00"
R	4030.00'
T	384.50
Ch	765.52
Lc	766.67

FED ROAD DIST. NO.	STATE	FED AID PROJ. NO.	FISCAL YEAR	SHEET NO.	TOTAL SHEETS
HAWAII	HAW.	STP-0300(163)	2020	24	284

True North
Scale: 1"=20'
TMK: 2-1-005
009, 018, & 019




Prior to demolition work, the Contractor shall coordinate with the State Surveyor to locate existing street monuments. For traffic signal demolition, see signal demolition plans.

(D1) Approximate limits of demolition of concrete sidewalk, ramps, driveway, curb, gutter, and restoration of asphalt concrete pavement. See roadway and curb ramp plans for details.

ORIGINAL PLAN	SURVEY PLOTTED BY _____	DATE _____
NOTE BOOK	DRAWN BY _____	_____"
	TRACED BY _____	_____"
	DESIGNED BY _____	_____"
	QUANTITIES BY _____	_____"
No. _____	CHECKED BY _____	_____"

Aug 28, 2020-6:00am
 \\C:\CD\NW\2015\1512-Traffic Signal Modernization @ Various Locations P2\FINAL\024 Demolition V.dun



License Expiration Date 04-30-22

THIS WORK WAS PREPARED BY ME OR UNDER MY SUPERVISION AND CONSTRUCTION OF THIS PROJECT WILL BE UNDER MY OBSERVATION AS DEFINED IN HAR TITLE 16, CHAPTER 115, RULES OF THE BOARD OF PROFESSIONAL ENGINEERS, ARCHITECTS AND SURVEYORS, STATE OF HAWAII.

Conrad Higashimura

STATE OF HAWAII
DEPARTMENT OF TRANSPORTATION
HIGHWAYS DIVISION

DEMOLITION PLAN

Vineyard Blvd & Queen Emma St

*Traffic Signal Modernization,
Oahu, Phase 1*

Federal-Aid Project No. STP-0300(163)

Scale: 1"=20' Date: July 2000

SHEET No. D-11 OF 17 SHEETS

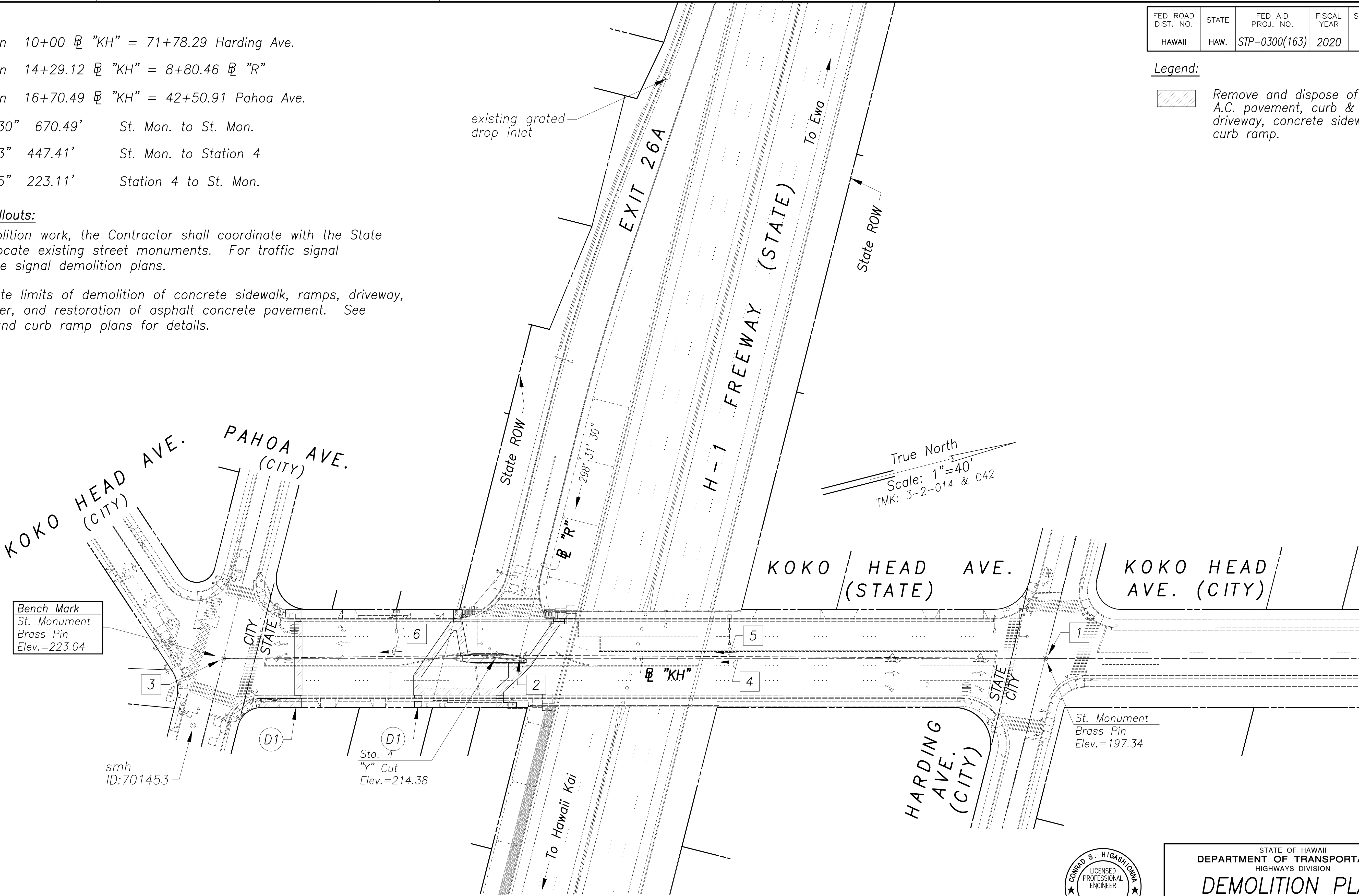
Notes:

- 1
- Intersection
- 10+00 @ "KH" = 71+78.29
- Harding Ave.
- 2
- Intersection
- 14+29.12 @ "KH" = 8+80.46 @ "R"
- 3
- Intersection
- 16+70.49 @ "KH" = 42+50.91
- Pahoa Ave.
- 4
- 149° 19' 30"
- 670.49'
- St. Mon. to St. Mon.
- 5
- 14° 40' 03"
- 447.41'
- St. Mon. to Station 4
- 6
- 13° 38' 25"
- 223.11'
- Station 4 to St. Mon.

Demolition Callouts:

Prior to demolition work, the Contractor shall coordinate with the State Surveyor to locate existing street monuments. For traffic signal demolition, see signal demolition plans.

- D1
- Approximate limits of demolition of concrete sidewalk, ramps, driveway, curb, gutter, and restoration of asphalt concrete pavement. See roadway and curb ramp plans for details.



FED. ROAD DIST. NO.	STATE	FED. AID PROJ. NO.	FISCAL YEAR	SHEET NO.	TOTAL SHEETS
HAWAII	HAW.	STP-0300(163)	2020	25	284

Legend:

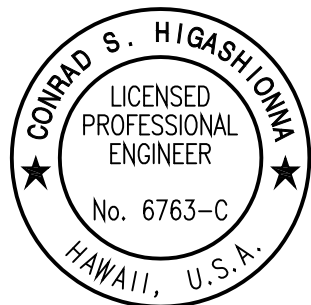


Remove and dispose of existing A.C. pavement, curb & gutter, driveway, concrete sidewalk, and curb ramp.

SURVEY PLOTTED BY	DATE
DRAWN BY	
DESIGNED BY	
QUANTITIES BY	
CHECKED BY	

ORIGINAL PLAN	No.
NOTE BOOK	
CHECKED BY	

Aug. 28, 2020 - 8:00pm
N:\CAO\DWG\2015\1512-Traffic Signal Modernization @ Various Locations P&E\FINAL\025 Demolition H.dwg



License Expiration Date 04-30-22

THIS WORK WAS PREPARED BY ME OR UNDER MY SUPERVISION AND CONSTRUCTION OF THIS PROJECT WILL BE UNDER MY OBSERVATION AS DEFINED IN HAWAII TITLE 16, CHAPTER 115, RULES OF THE BOARD OF PROFESSIONAL ENGINEERS, ARCHITECTS AND SURVEYORS, STATE OF HAWAII.

Conrad Higashimura

STATE OF HAWAII
DEPARTMENT OF TRANSPORTATION
HIGHWAYS DIVISION

DEMOLITION PLAN

H-1 Exit 26A & Koko Head Ave

Traffic Signal Modernization,
Oahu, Phase 1

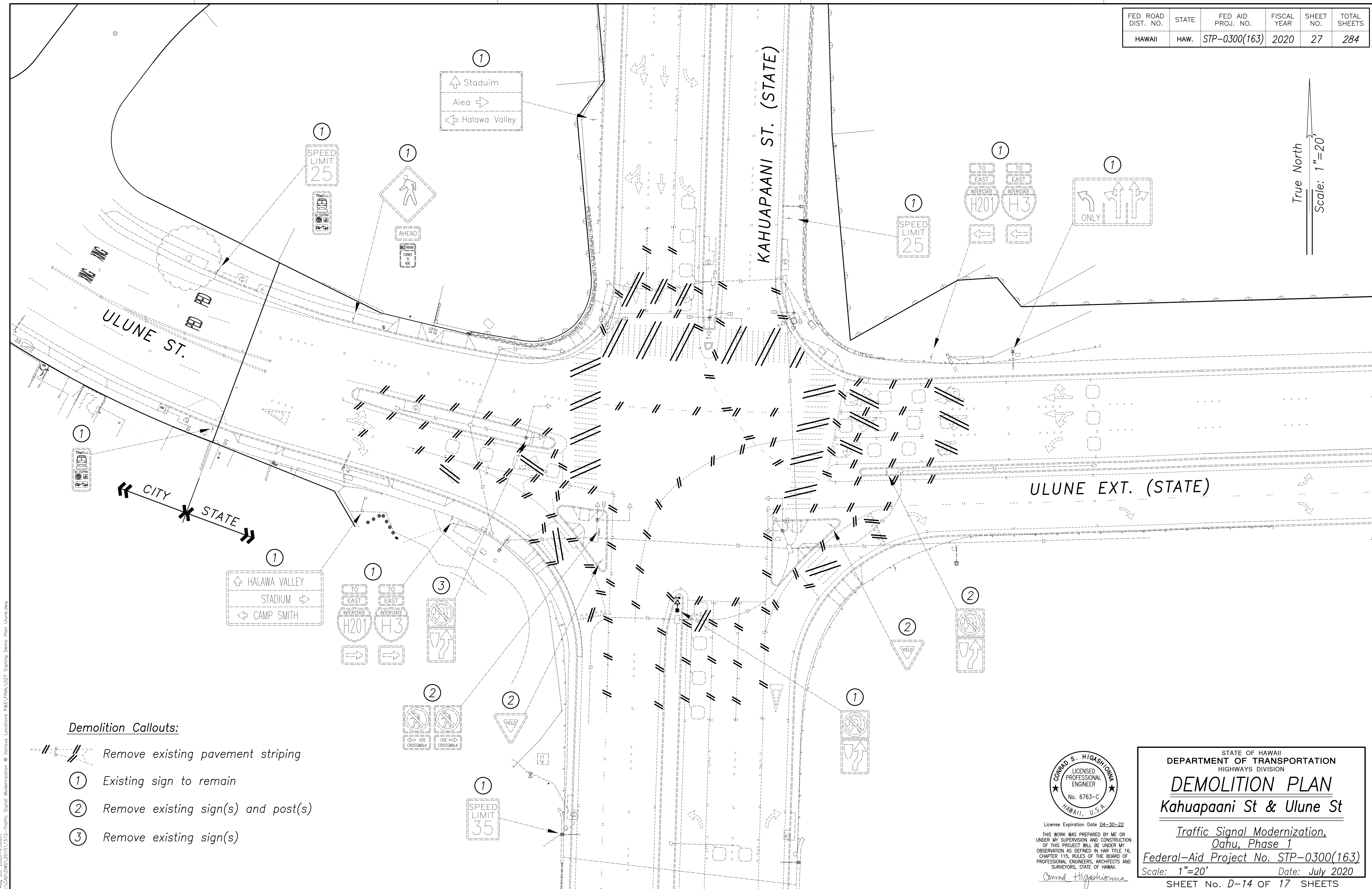
Federal-Aid Project No. STP-0300(163)

Scale: 1"=40' Date: July 2020

SHEET No. D-12 OF 17 SHEETS

FED. ROAD DIST. NO.	STATE	FED. AID PROJ. NO.	FISCAL YEAR	SHEET NO.	TOTAL SHEETS
HAWAII	HAW.	STP-0300(163)	2020	27	284

True North
Scale: 1"=20'

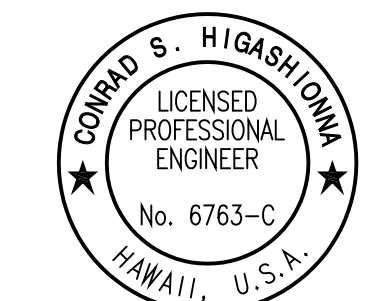


Demolition Callouts:

- Remove existing pavement striping
- ① Existing sign to remain
- ② Remove existing sign(s) and post(s)
- ③ Remove existing sign(s)

SURVEY PLOTTED BY	DATE
DRAWN BY	
DESIGNED BY	
QUANTITIES BY	
CHECKED BY	
NO.	

Aug 28, 2020 - 8:00am
N:\CAO\DWG\2015\1512-Traffic Signal Modernization @ Various Locations P&E\FINAL\027 Signing Demo Plan Ulune.dwg



License Expiration Date 04-30-22
THIS WORK WAS PREPARED BY ME OR UNDER MY SUPERVISION AND CONSTRUCTION OF THIS PROJECT WILL BE UNDER MY OBSERVATION AS DEFINED IN HAWAII TITLE 16, CHAPTER 115, RULES OF THE BOARD OF PROFESSIONAL ENGINEERS, ARCHITECTS AND SURVEYORS, STATE OF HAWAII.
Conrad Higashimura

STATE OF HAWAII
DEPARTMENT OF TRANSPORTATION
HIGHWAYS DIVISION

DEMOLITION PLAN
Kahupaani St & Ulune St

Traffic Signal Modernization,
Oahu, Phase 1

Federal-Aid Project No. STP-0300(163)

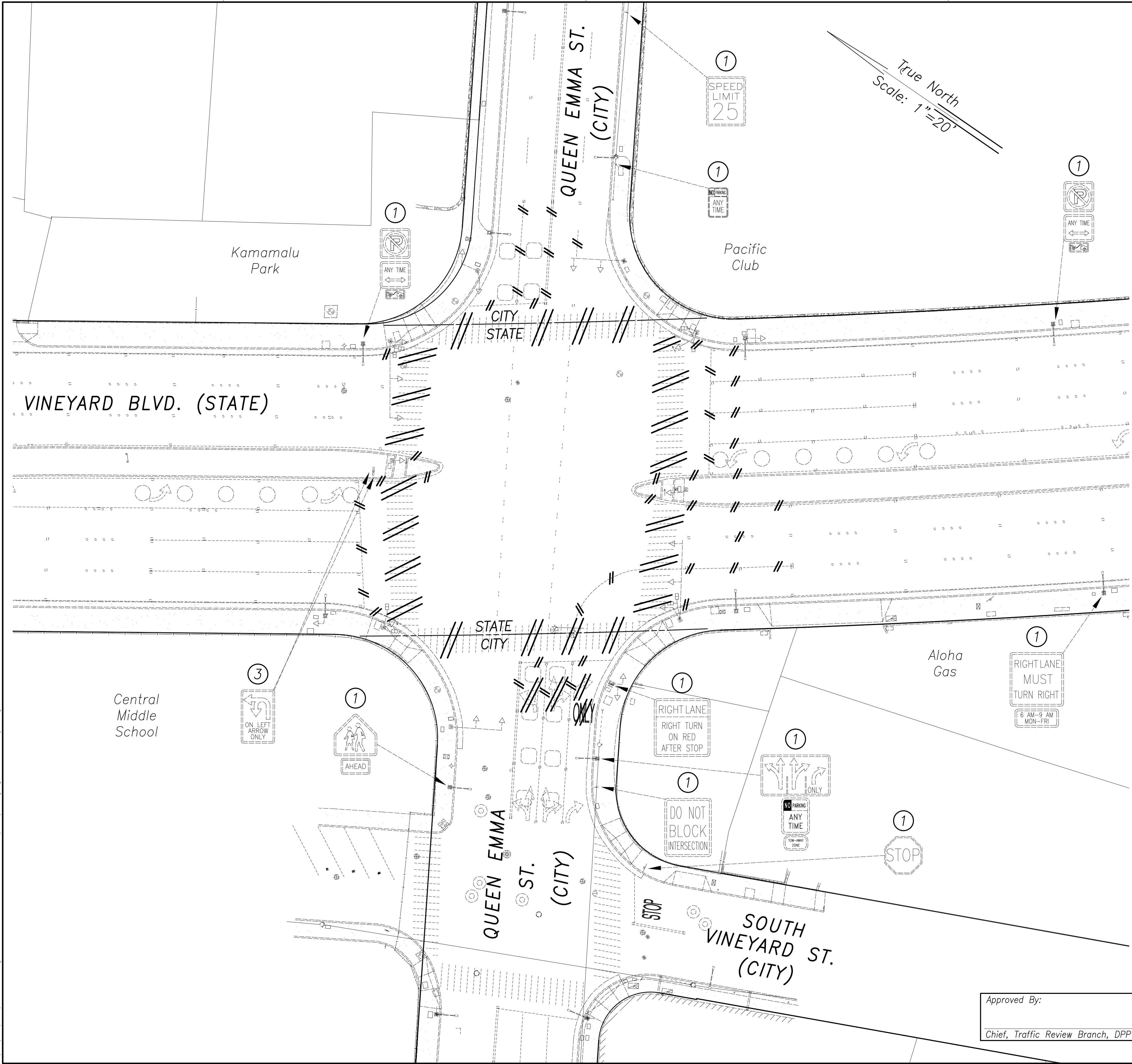
Scale: 1"=20' Date: July 2020

SHEET No. D-14 OF 17 SHEETS

FED. ROAD DIST. NO.	STATE	FED. AID PROJ. NO.	FISCAL YEAR	SHEET NO.	TOTAL SHEETS
HAWAII	HAW.	STP-0300(163)	2020	28	284

Demolition Callouts:

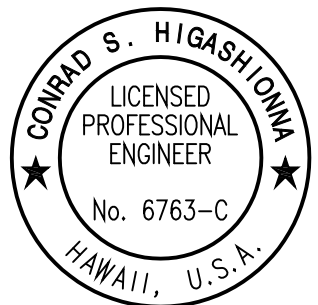
- //-- Remove existing pavement striping
- ① Existing sign(s) to remain
- ② Remove existing sign(s) and post(s)
- ③ Remove existing sign(s)



ORIGINAL PLAN	SURVEY PLOTTED BY	DATE
NOTE BOOK	DRAWN BY	
	DESIGNED BY	
	QUANTITIES BY	
	CHECKED BY	
No.		

Aug. 28, 2020--6:00pm
N:\CAO\DWG\2015\1512-Traffic Signal Modernization @ Various Locations P&E\FINAL\028 Signing Demo Plan Vineyard.dwg

Approved By: _____
Chief, Traffic Review Branch, DPP Date



License Expiration Date 04-30-22
THIS WORK WAS PREPARED BY ME OR UNDER MY SUPERVISION AND CONSTRUCTION OF THIS PROJECT WILL BE UNDER MY OBSERVATION AS DEFINED IN HAW. TITLE 16, CHAPTER 115, RULES OF THE BOARD OF PROFESSIONAL ENGINEERS, ARCHITECTS AND SURVEYORS, STATE OF HAWAII.
Conrad Higashimura

STATE OF HAWAII
DEPARTMENT OF TRANSPORTATION
HIGHWAYS DIVISION

DEMOLITION PLAN

Vineyard Blvd & Queen Emma St

**Traffic Signal Modernization,
Oahu, Phase 1**

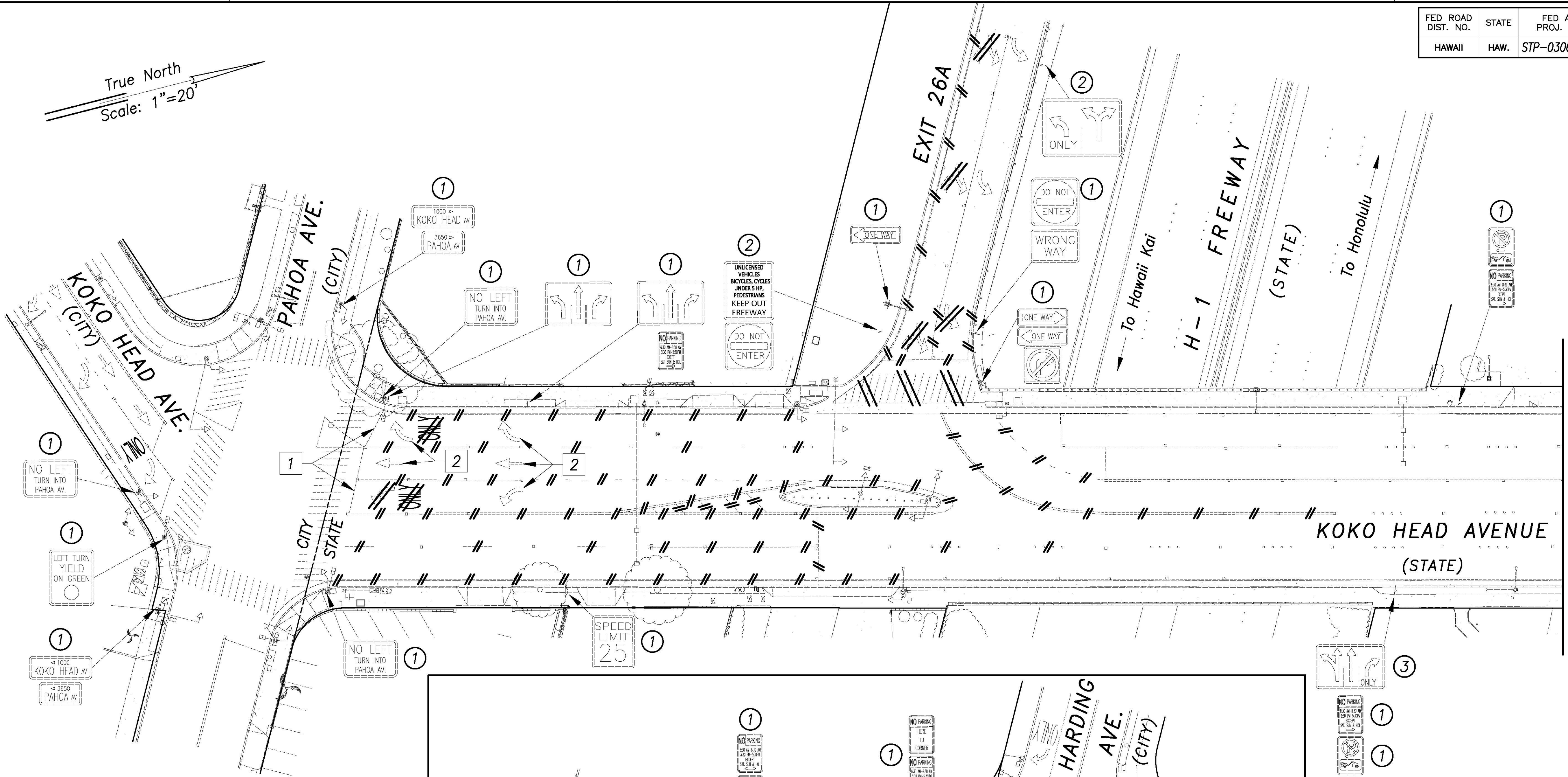
Federal-Aid Project No. STP-0300(163)

Scale: 1"=20' Date: July 2020

SHEET No. D-15 OF 17 SHEETS

FED. ROAD DIST. NO.	STATE	FED. AID PROJ. NO.	FISCAL YEAR	SHEET NO.	TOTAL SHEETS
HAWAII	HAW.	STP-0300(163)	2020	29	284

True North
Scale: 1"=20'



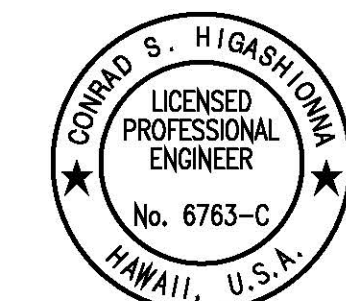
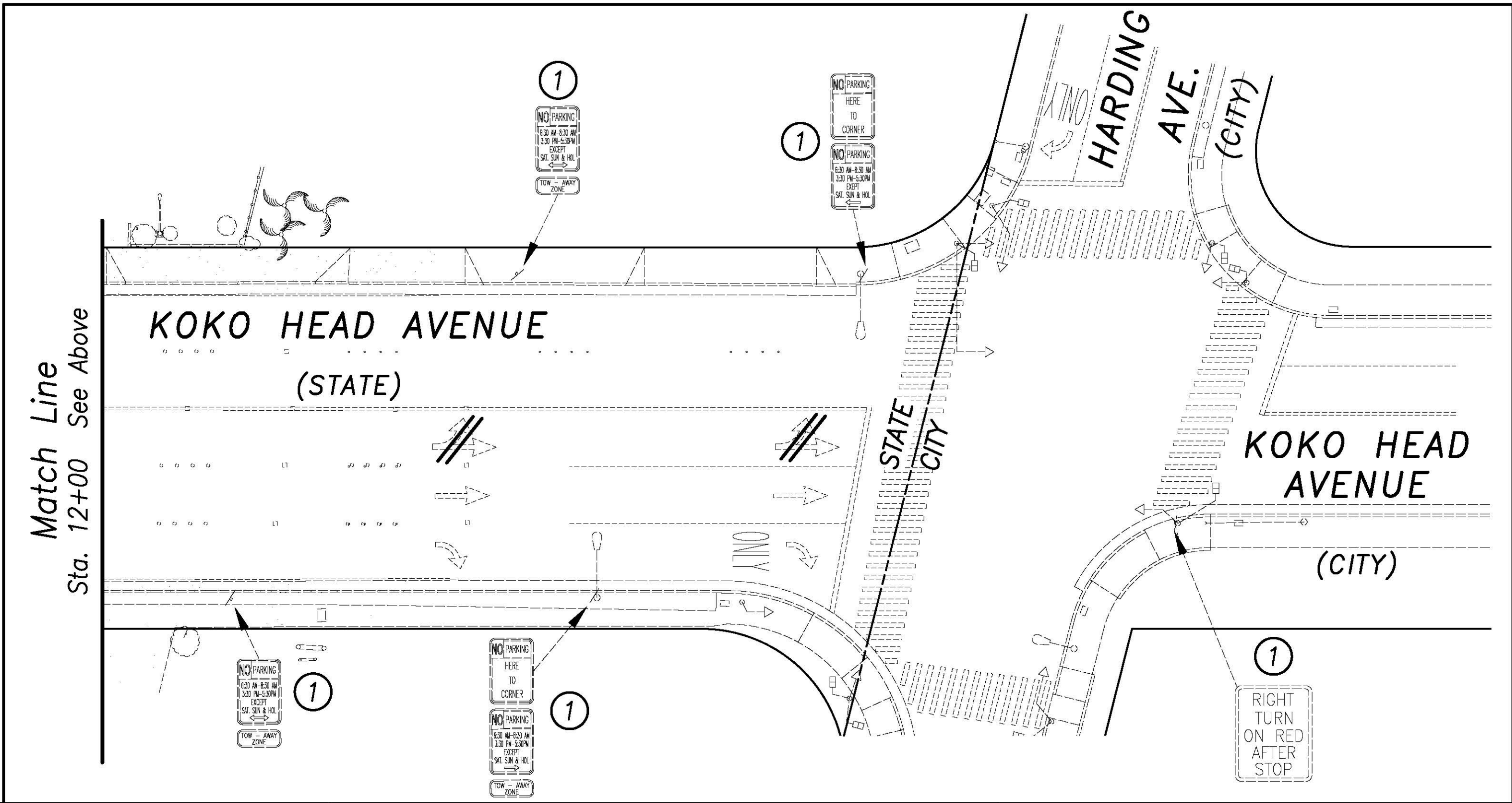
Notes:

- 1 Stop line to remain.
- 2 Pavement arrows to remain.

Demolition Callouts:

--//-- Remove existing pavement striping

- 1 Existing sign(s) to remain
- 2 Remove existing sign(s) and post(s)
- 3 Remove existing sign(s)



License Expiration Date 04-30-22
THIS WORK WAS PREPARED BY ME OR UNDER MY SUPERVISION AND CONSTRUCTION OF THIS PROJECT WILL BE UNDER MY OBSERVATION AS DEFINED IN HAWAII TITLE 16, CHAPTER 115, RULES OF THE BOARD OF PROFESSIONAL ENGINEERS, ARCHITECTS AND SURVEYORS, STATE OF HAWAII.
Conrad Higashimura

Remove 4" white stripe and markers along Exit 26A. Remove additional pavement arrows and lane usage sign.

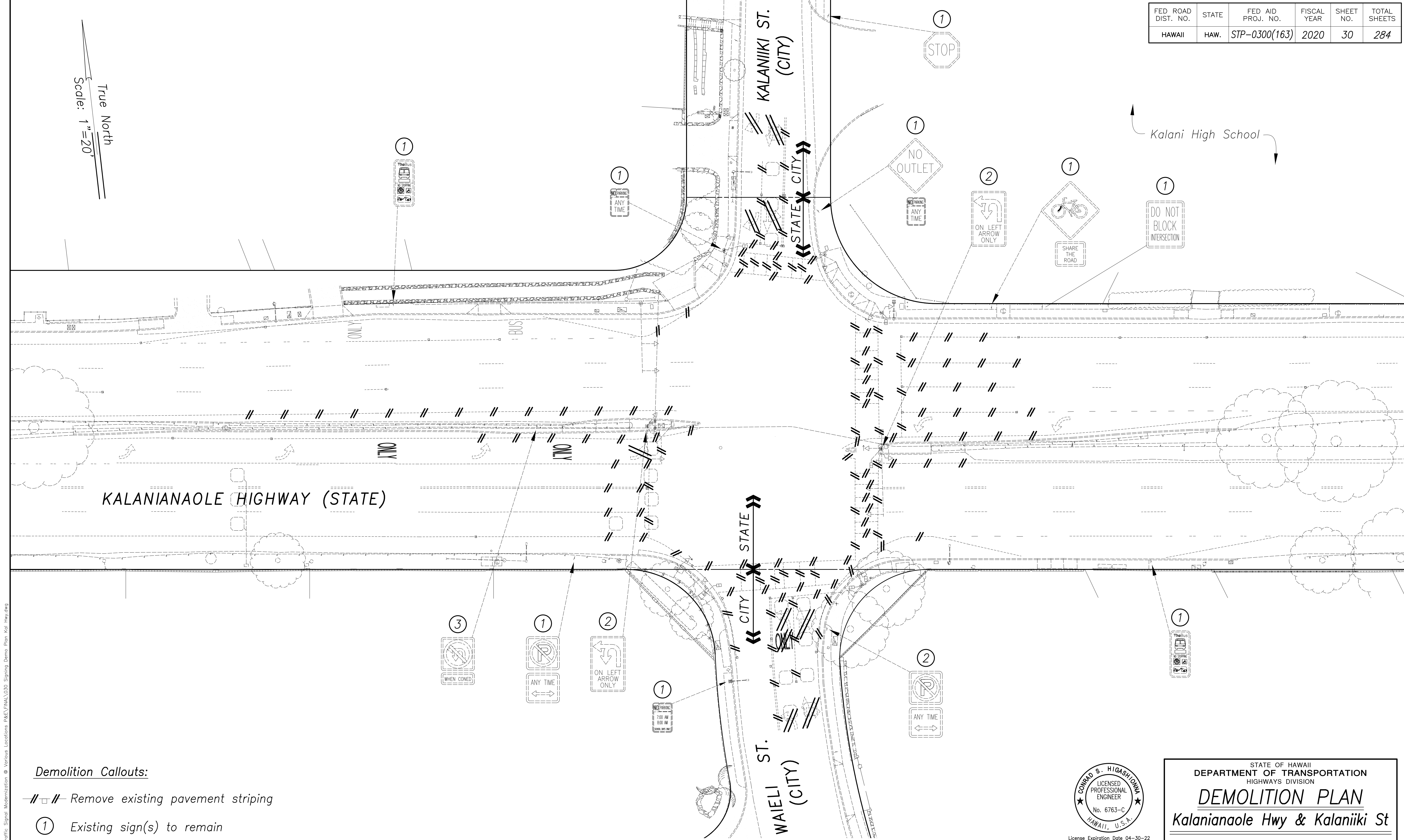
9/16/20 DATE REVISION

STATE OF HAWAII
DEPARTMENT OF TRANSPORTATION
HIGHWAYS DIVISION
DEMOLITION PLAN
H-1 Exit 26A & Koko Head Ave
Traffic Signal Modernization,
Oahu, Phase 1
Federal-Aid Project No. STP-0300(163)
Scale: 1"=20' Date: July 2020
SHEET No. D-16 OF 17 SHEETS

ORIGINAL PLAN	SURVEY PLANNED BY	DATE
NOTE BOOK	DRAWN BY	
QUANTITIES BY	DESIGNED BY	
CHECKED BY	REVIEWED BY	
No.		

See 17, 2020-03-20
N:\CAO\DWG\2015\1512-Traffic Signal Modernization @ Various Locations P&E\FINAL\029 Signing Demo Plan H-1 Addendum.dwg

FED. ROAD DIST. NO.	STATE	FED. AID PROJ. NO.	FISCAL YEAR	SHEET NO.	TOTAL SHEETS
HAWAII	HAW.	STP-0300(163)	2020	30	284

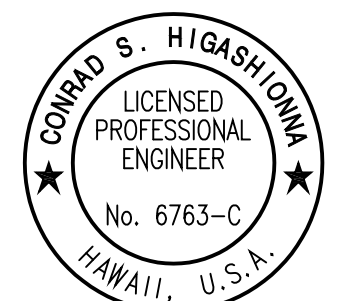


Demolition Callouts:

- Remove existing pavement striping
- Existing sign(s) to remain
- Remove existing sign(s) and post(s)
- Remove existing sign(s)

SURVEY PLOTTED BY	DATE
DRAWN BY	
DESIGNED BY	
QUANTITIES BY	
CHECKED BY	

Aug 28, 2020-163km
N:\CAO\DWG\2015\1512-Traffic Signal Modernization @ Various Locations P&E\FINAL\030 Signing Demo Plan Kal Hwy.dwg



License Expiration Date 04-30-22
THIS WORK WAS PREPARED BY ME OR UNDER MY SUPERVISION AND CONSTRUCTION OF THIS PROJECT WILL BE UNDER MY OBSERVATION AS DEFINED IN HAWAII TITLE 16, CHAPTER 115, RULES OF THE BOARD OF PROFESSIONAL ENGINEERS, ARCHITECTS AND SURVEYORS, STATE OF HAWAII.

Approved By:
Chief, Traffic Review Branch, DPP Date

STATE OF HAWAII
DEPARTMENT OF TRANSPORTATION
HIGHWAYS DIVISION

DEMOLITION PLAN
Kalanianaʻole Hwy & Kalaniiki St

Traffic Signal Modernization,
Oahu, Phase 1

Federal-Aid Project No. STP-0300(163)

Scale: 1"=20' Date: July 2020

SHEET No. D-17 OF 17 SHEETS