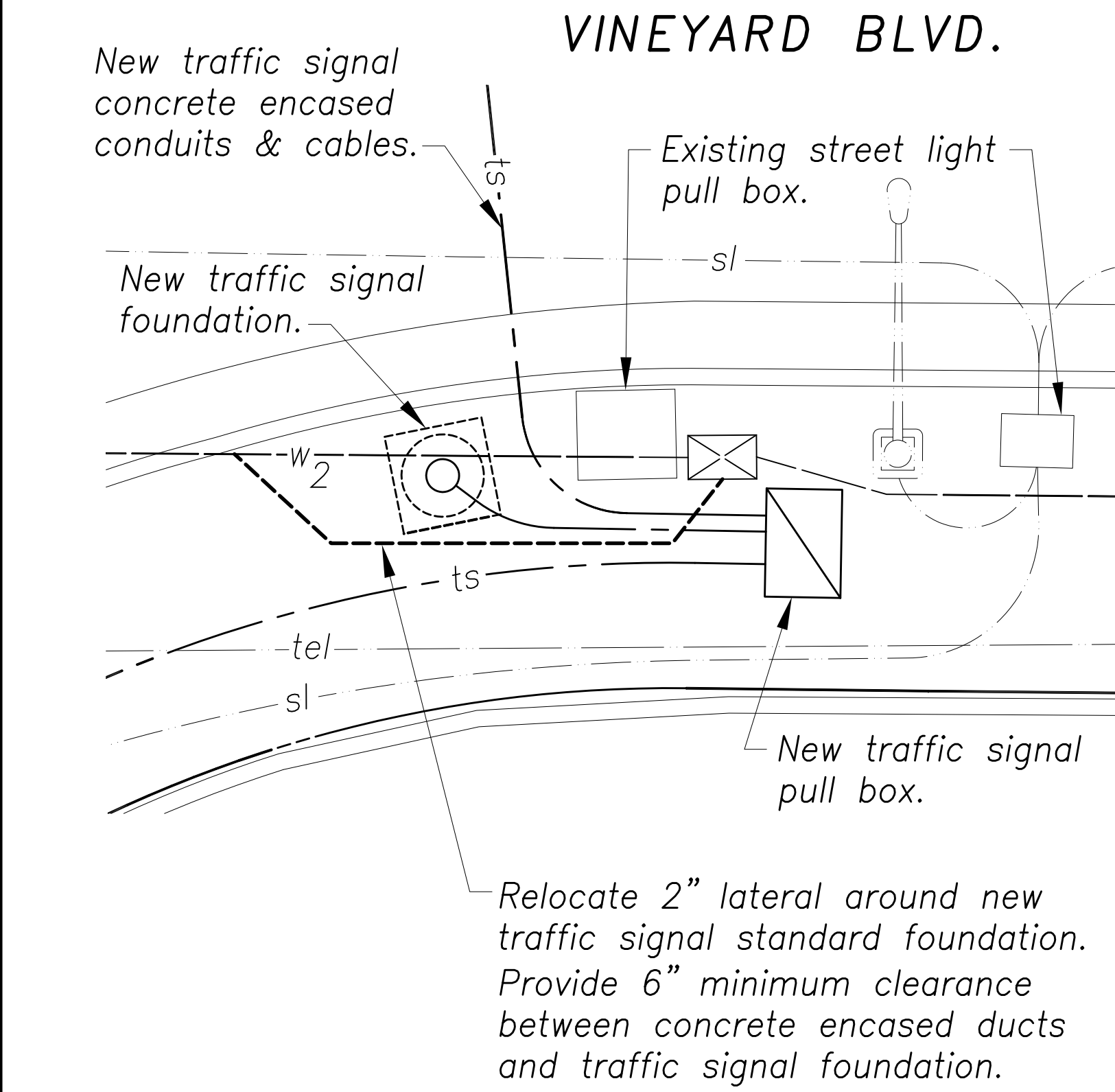


FED. ROAD DIST. NO.	STATE	FED. AID PROJ. NO.	FISCAL YEAR	SHEET NO.	TOTAL SHEETS
HAWAII	HAW.	STP-0300(163)R	2020	56	291

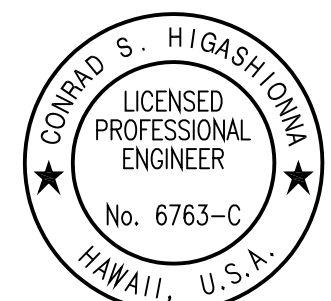


INSET
Scale: 1"=4'

Note:
The Contractor shall coordinate with Aloha Petroleum for water relocation work requiring shut-down of water service. The Contractor shall pay for all overtime costs associated with Board of Water Supply inspection and valve closures.

P/ID 4610705596
M/N 15040021

Aloha Petroleum Ltd.



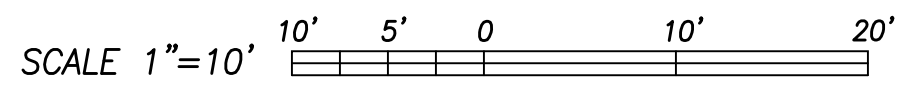
STATE OF HAWAII
DEPARTMENT OF TRANSPORTATION
HIGHWAYS DIVISION

WATER PLAN
Vineyard Blvd & Queen Emma St

ADDITIVE ALTERNATE #1
Traffic Signal Modernization, Oahu, Phase 1
Federal-Aid Project No. STP-0300(163)R
Scale: 1"=10' Date: Oct. 2020

SHEET No. R-35 OF 81 SHEETS

GRAPHIC SCALES

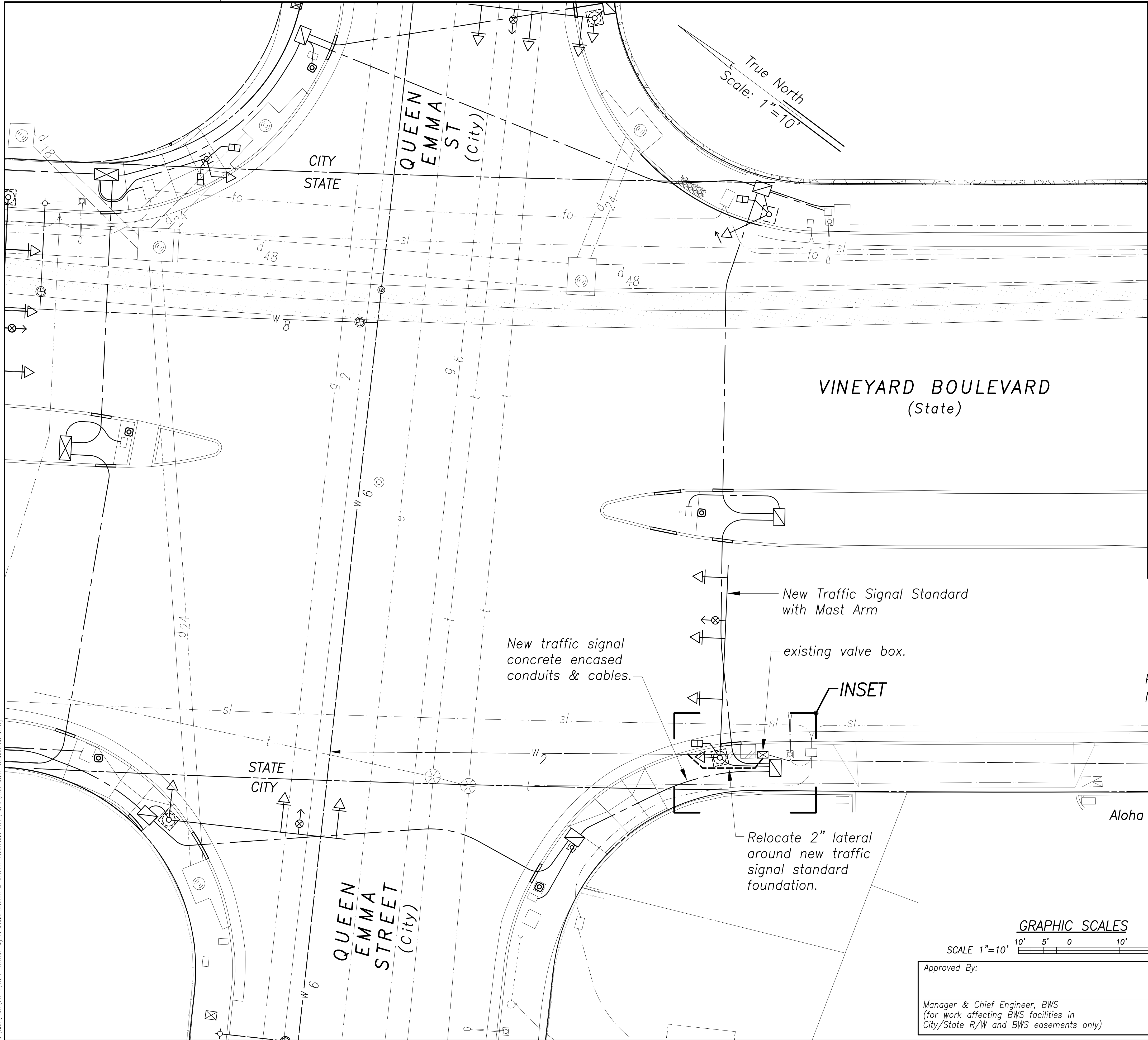


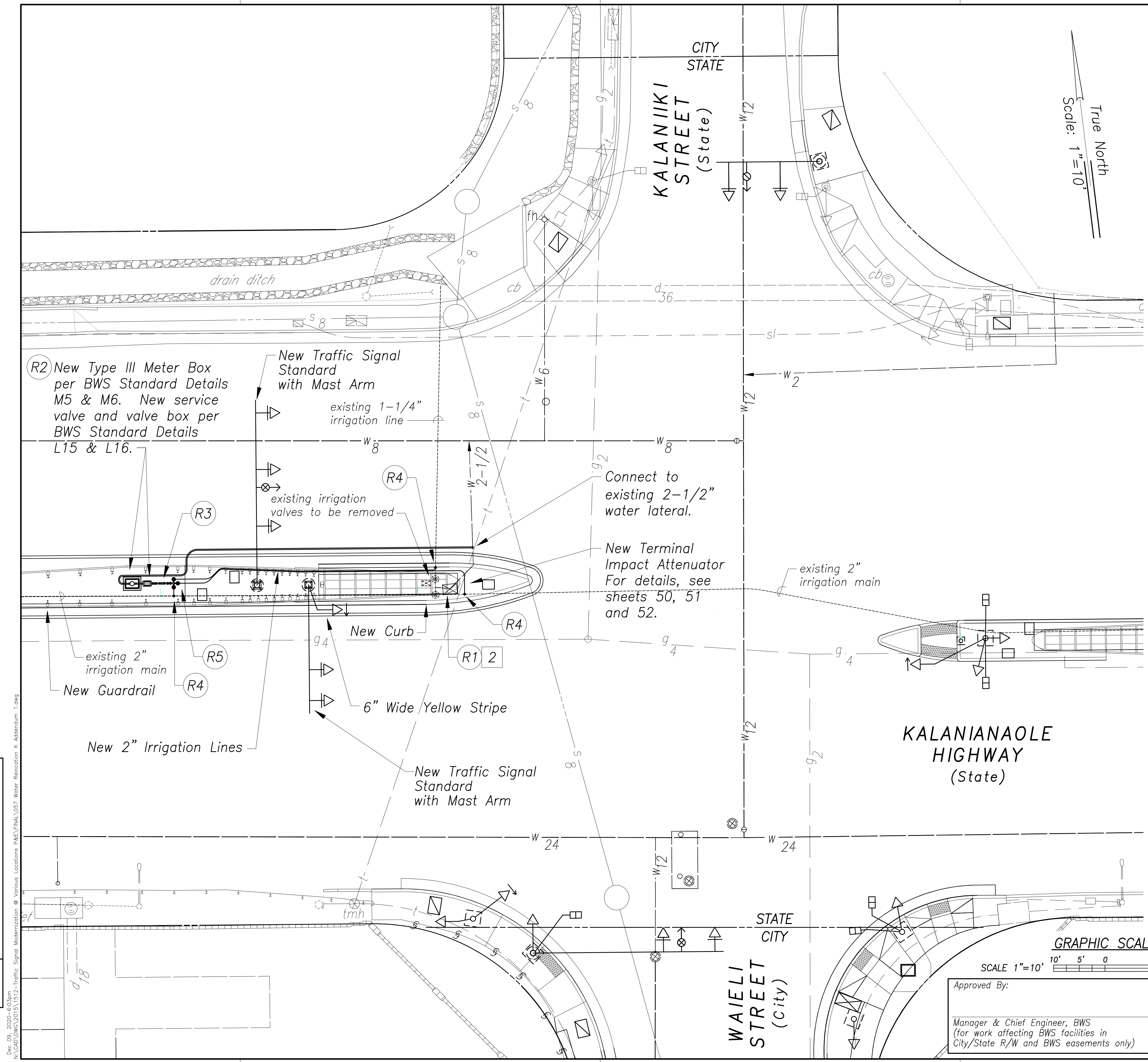
Approved By: _____ Date _____
Manager & Chief Engineer, BWS
(for work affecting BWS facilities in
City/State R/W and BWS easements only)

License Expiration Date: 04-30-22
THIS WORK WAS PREPARED BY ME OR UNDER MY SUPERVISION AND CONSTRUCTION OF THIS PROJECT WILL BE UNDER MY OBSERVATION AS DEFINED IN HAWAII TITLE 16, CHAPTER 115, RULES OF THE BOARD OF PROFESSIONAL ENGINEERS, ARCHITECTS AND SURVEYORS, STATE OF HAWAII.
Conrad Higashimura

ORIGINAL PLAN	SURVEY PLOTTED BY	DATE
NOTE BOOK	DRAWN BY	
	DESIGNED BY	
	QUANTITIES BY	
	CHECKED BY	
No.		

New 18, 2020-10-20m
N:\CAO\DWG\2015\1512-Traffic Signal Modernization @ Various Locations P&E\FINAL\056 Water Relocation V.dwg





Notes:

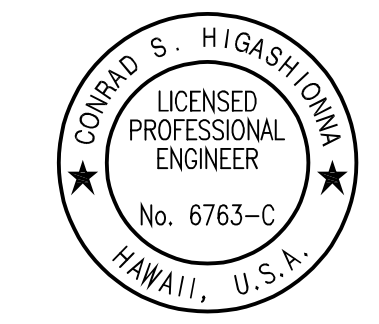
- 1 No additional irrigation water demand will be required. Existing meters are adequate to serve the existing irrigation system.
- 2 P/ID 6663933769 M/N 13070170
- 3 The Contractor shall verify the location of the existing irrigation system prior to construction. The Contractor shall restore the existing irrigation system affected by the construction.

Water Relocation Callouts:

- R1 Remove and dispose of water meter box and valve boxes. Salvage frames and covers. Relocate water meter.
- R2 P/ID 6663933769 M/N 13070170
The Contractor shall install new 2-1/2" lateral & all necessary fittings to accommodate the relocation of the existing 2" meter, new Type III meter box & all appurtenances in accordance with Board of Water Supply standards. The Contractor shall relocate the existing meter and reconnect to the existing property pipe. The Contractor shall coordinate the relocation work with the Board of Water Supply.
- R3 New Board of Water Supply approved 2 1/2" reduced pressure principal backflow prevention assembly after the water meter prior to any tees or branches per BWS Standard Detail V-9.
- R4 The Contractor shall connect to new 2-inch irrigation lines to existing irrigation lines.
- R5 Install three new 2-inch irrigation valves and valve boxes.

SURVEY PLOTTED BY	DATE
DRAWN BY	
DESIGNED BY	
QUANTITIES BY	
CHECKED BY	

Dec 09, 2020-10:30am
N:\CAO\DWG\2015\1512-Traffic Signal Modernization @ Various Locations P&E\FINAL\057 Water Relocation K Addendum 1.dwg



GRAPHIC SCALES
SCALE 1"=10'
10' 5' 0' 10' 20'

Approved By: _____ Date _____
Manager & Chief Engineer, BWS
(for work affecting BWS facilities in
City/State R/W and BWS easements only)

12/09/20	Revised Note 3. Revised Water Relocation Callouts R3 and R5.
DATE	REVISION
STATE OF HAWAII DEPARTMENT OF TRANSPORTATION HIGHWAYS DIVISION	
WATER PLAN	
Kalanianaʻole Hwy & Kalaniiki St	
ADDITIVE ALTERNATE #2	
Traffic Signal Modernization, Oahu, Phase 1	
Federal-Aid Project No. STP-0300(163)R	
Scale: 1"=10'	Date: Oct. 2020
SHEET No. R-36 OF 81 SHEETS	