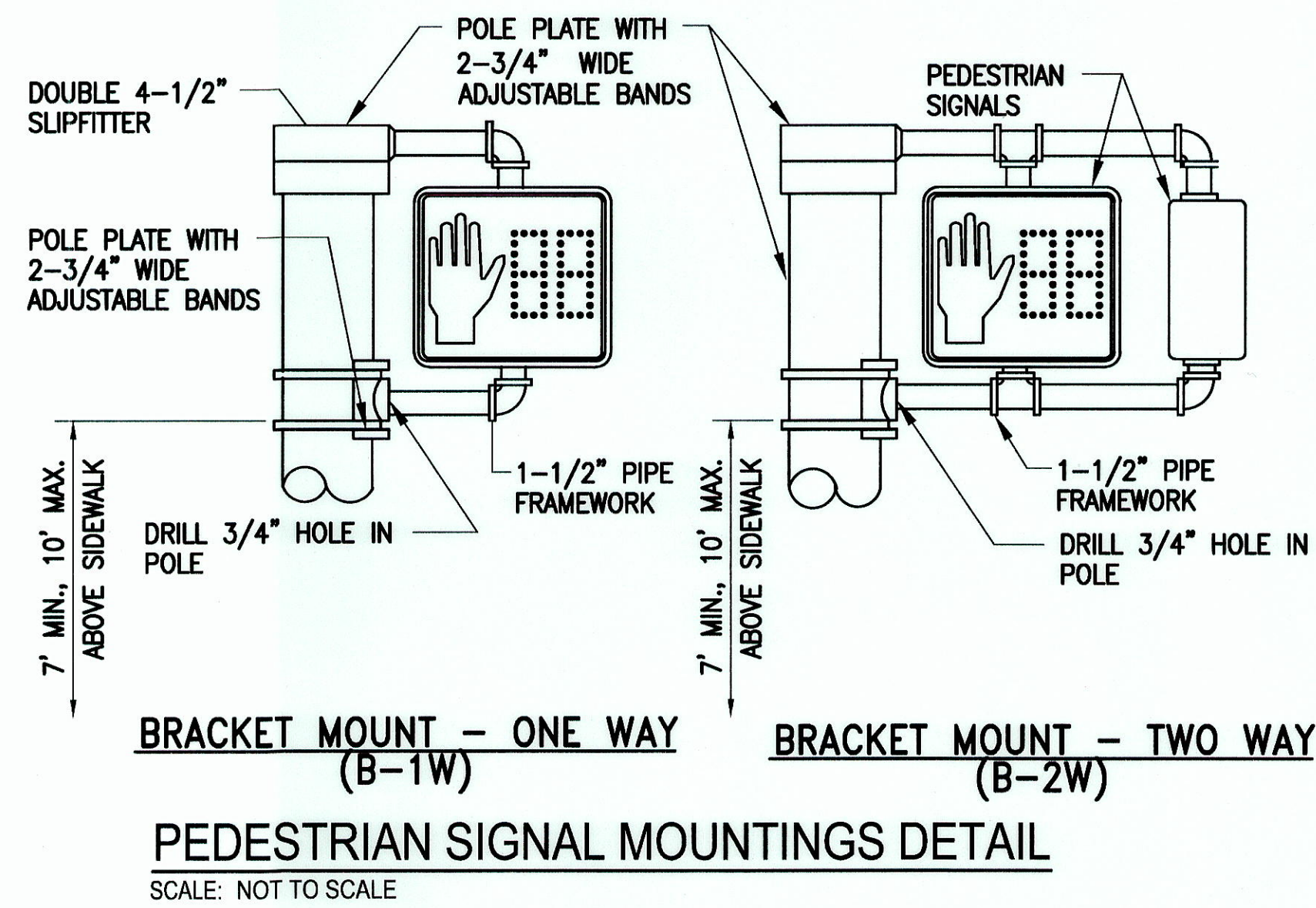
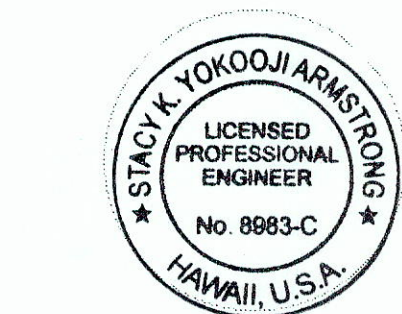


FED. ROAD DIST. NO.	STATE	PROJ. NO.	FISCAL YEAR	SHEET NO.	TOTAL SHEETS
HAWAII	HAW.	HWY-0-04-13	2013	4	12



DESIGNED BY	DATE
DRAWN BY	
CHECKED BY	
IN CHARGE	
PROJECT NO.	
SHEET NO.	
TITLE	
DATE	



THIS WORK WAS PREPARED BY ME OR UNDER MY SUPERVISION AND CONSTRUCTION OF THIS PROJECT WILL BE UNDER MY OBSERVATION.

Signature: *[Signature]* DATE: April 30, 2014

"OBSERVATION OF CONSTRUCTION" IS DEFINED IN CHAPTER 16-115, HAWAII ADMINISTRATIVE RULES ENTITLED "PROFESSIONAL ENGINEERS, ARCHITECTS, SURVEYORS AND LANDSCAPE ARCHITECTS."

STATE OF HAWAII  
DEPARTMENT OF TRANSPORTATION  
HIGHWAYS DIVISION

PEDESTRIAN SIGNAL  
MOUNTINGS DETAIL  
PEDESTRIAN COUNTDOWN TIMERS  
PHASE 2  
Proj. No. HWY-0-04-13

Scale: Not to Scale
Date: May 2013

SHEET No. C1.1 OF 12 SHEETS