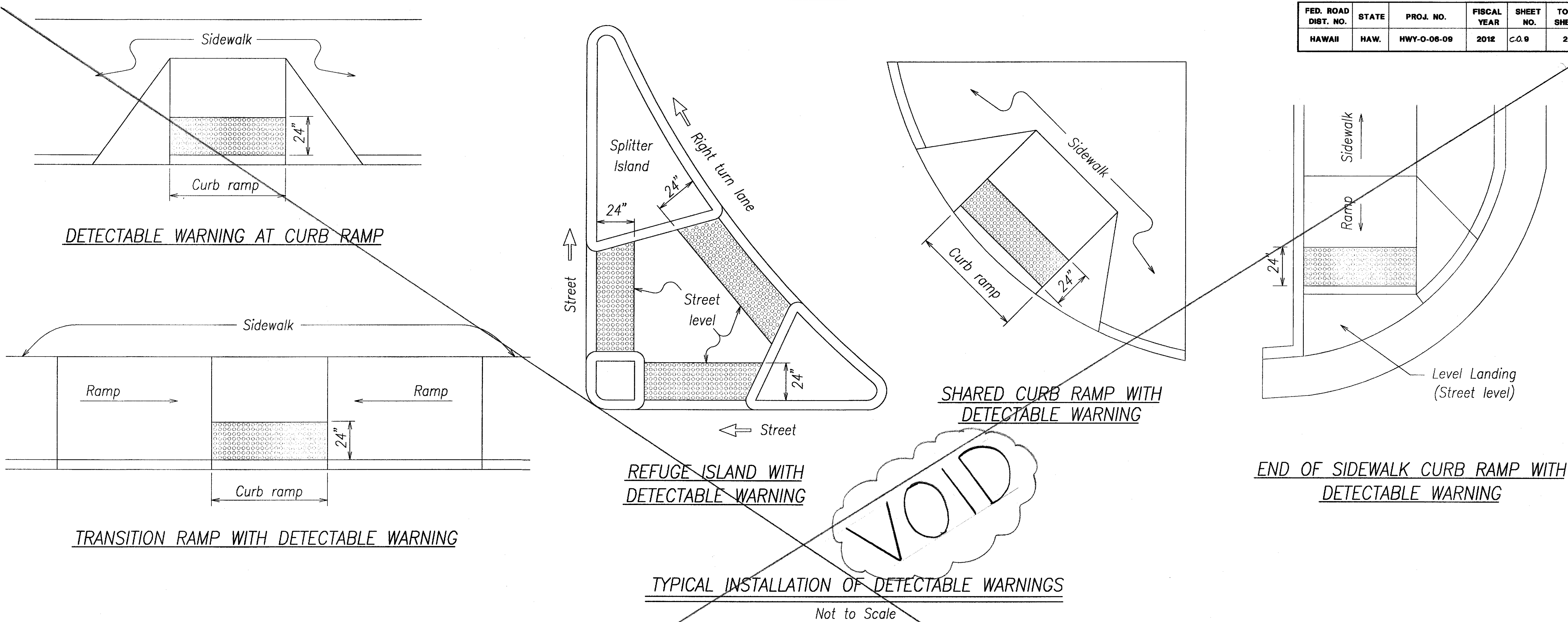
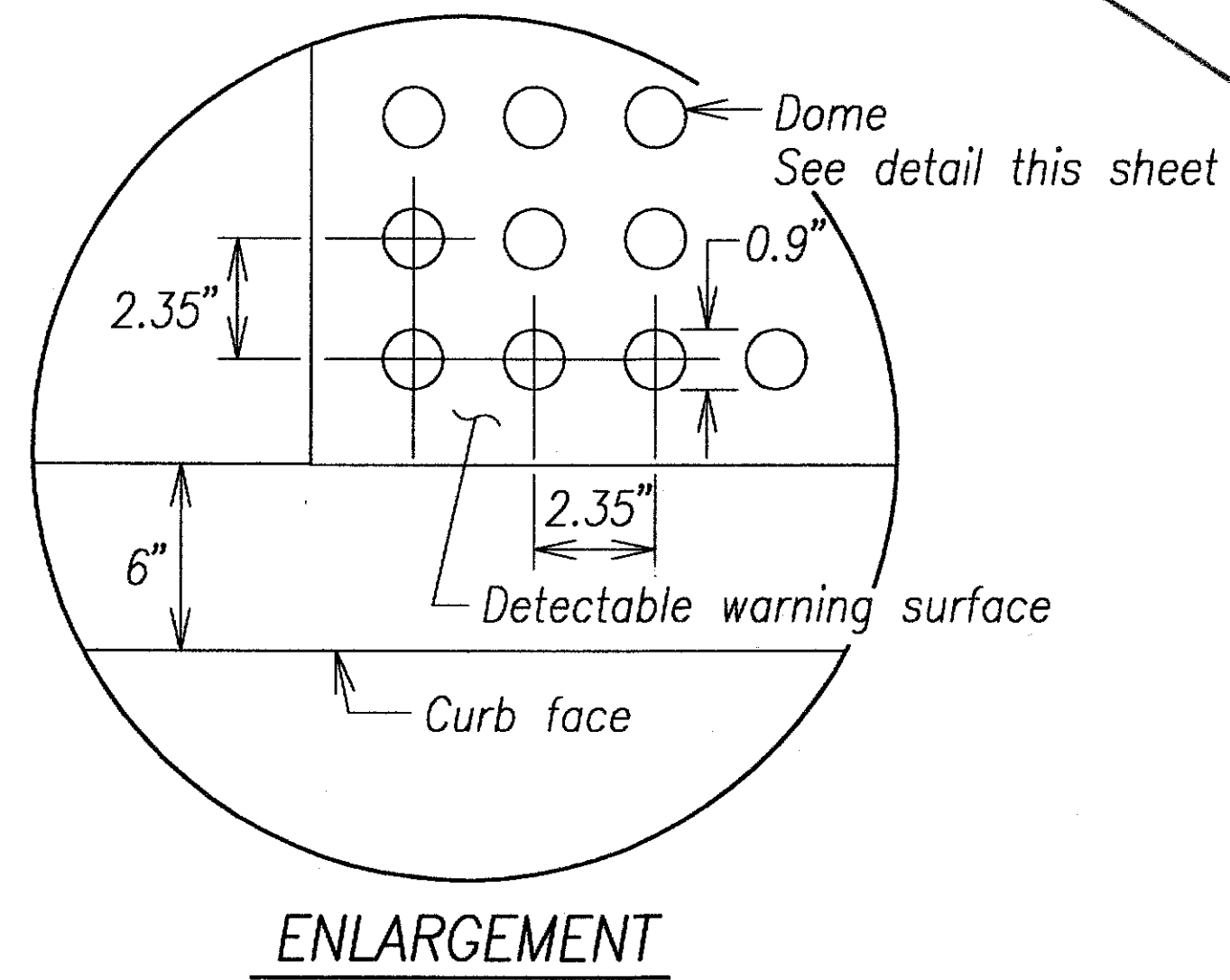


FED. ROAD DIST. NO.	STATE	PROJ. NO.	FISCAL YEAR	SHEET NO.	TOTAL SHEETS
HAWAII	HAW.	HWY-0-06-09	2012	C.O. 9	25

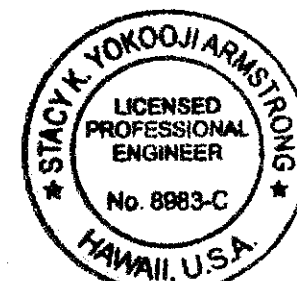


NOTES:

1. Detectable warnings shall be 24 inches in the direction of travel and extend the full width of the curb ramp or flush surface (does not include flares).
2. Truncated domes shall have a diameter of 0.9 inch at the bottom, a diameter of 0.4 inch at the top, a height of 0.2 inch and a center-to-center spacing of 2.35 inches measured along one side of a square arrangement.
3. Domes shall be aligned on a square grid in the predominant direction of travel to permit wheels to roll between the domes.
4. There shall be a minimum of 70 percent contrast in light reflectance between the detectable warning and an adjoining surface, or the detectable warning shall be "safety yellow".
5. The material used to provide visual contrast shall be an integral part of the detectable warning surface.
6. The detectable warning shall be located so that the edge nearest the curb line or other potential hazard is 6 to 8 inches from the curb line.



DESIGNED BY	DATE
TRACED BY	
DESIGNED BY	
QUANTITIES BY	
CHECKED BY	
ORIGINAL PLAN	
NOTE BOOK	
No.	



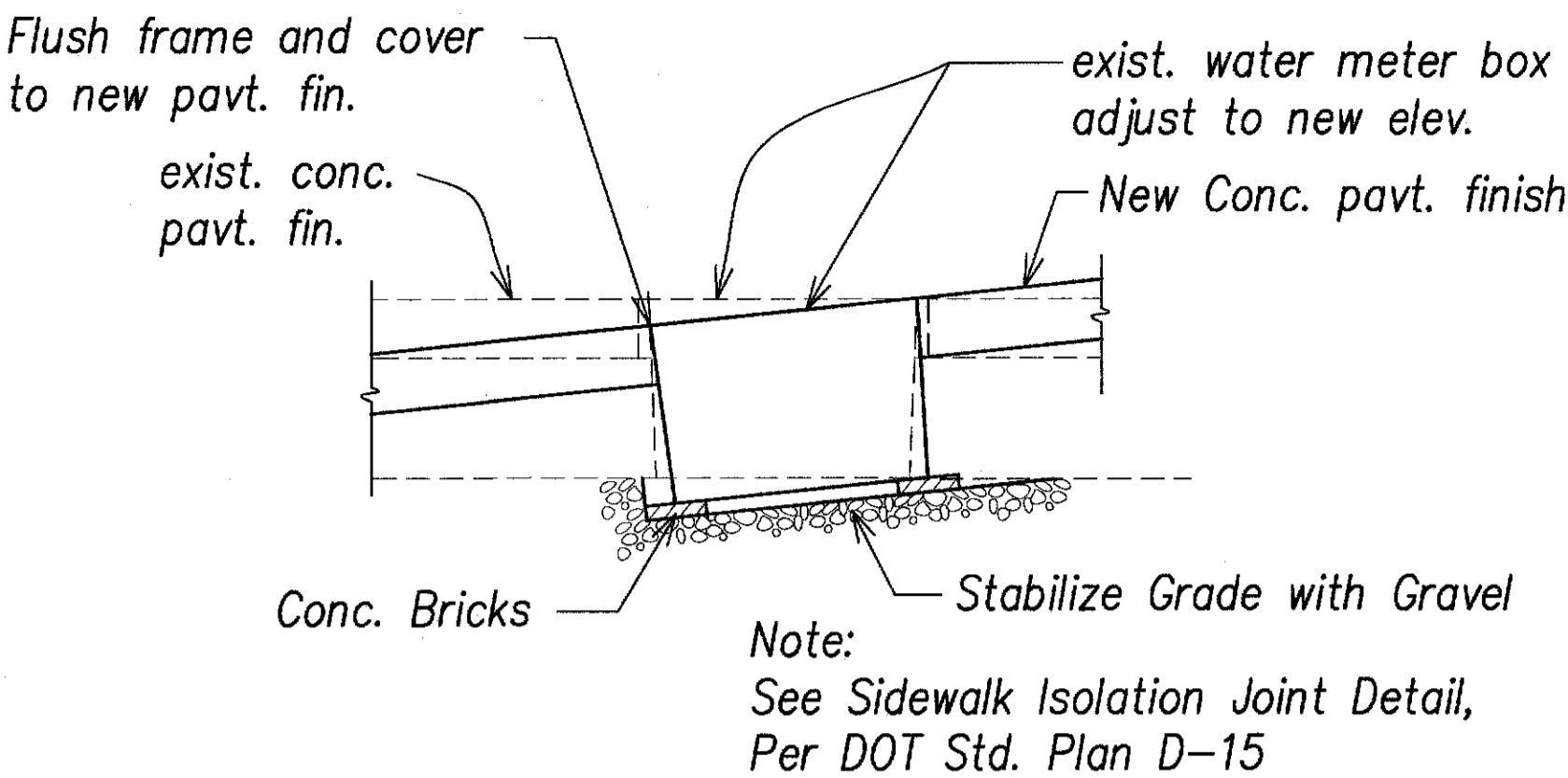
THIS WORK WAS PREPARED BY ME OR UNDER MY SUPERVISION AND CONSTRUCTION OF THIS PROJECT WILL BE UNDER MY OBSERVATION.

Signature: *Stacy K. Yokoo* Date: April 30, 2014

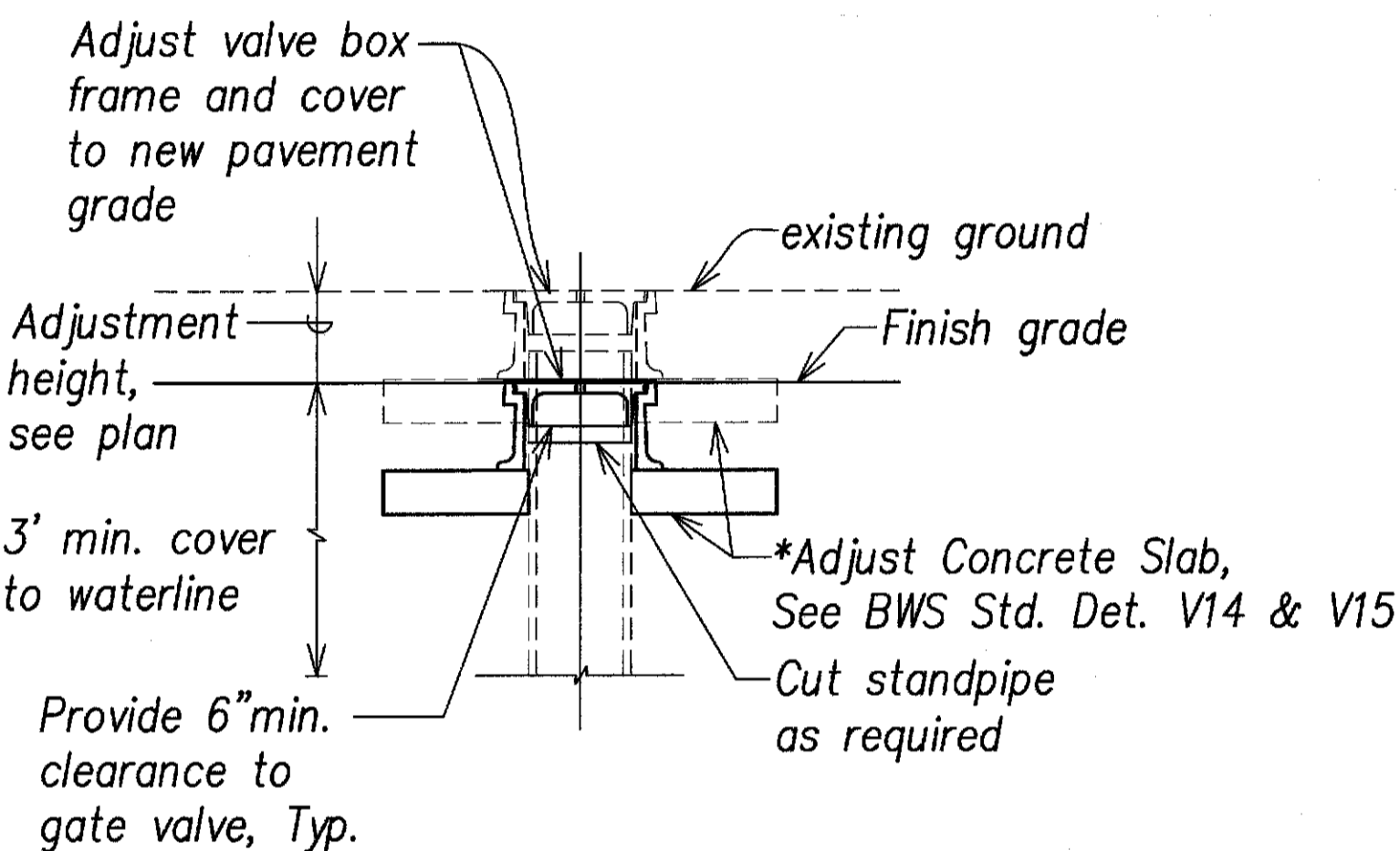
"OBSERVATION OF CONSTRUCTION" IS DEFINED IN CHAPTER 16-115, HAWAII ADMINISTRATIVE RULES ENTITLED "PROFESSIONAL ENGINEERS, ARCHITECTS, SURVEYORS AND LANDSCAPE ARCHITECTS".

8/27/12	Void Sheet
DATE	REVISION
STATE OF HAWAII DEPARTMENT OF TRANSPORTATION HIGHWAYS DIVISION	
DETECTABLE WARNING DETAILS	
<i>Pedestrian Facilities & ADA Compliance at Various Locations</i>	
Proj. No. HWY-0-06-09	
Scale: None	Date: April 2011
SHEET No. C-8 OF 25 SHEETS	

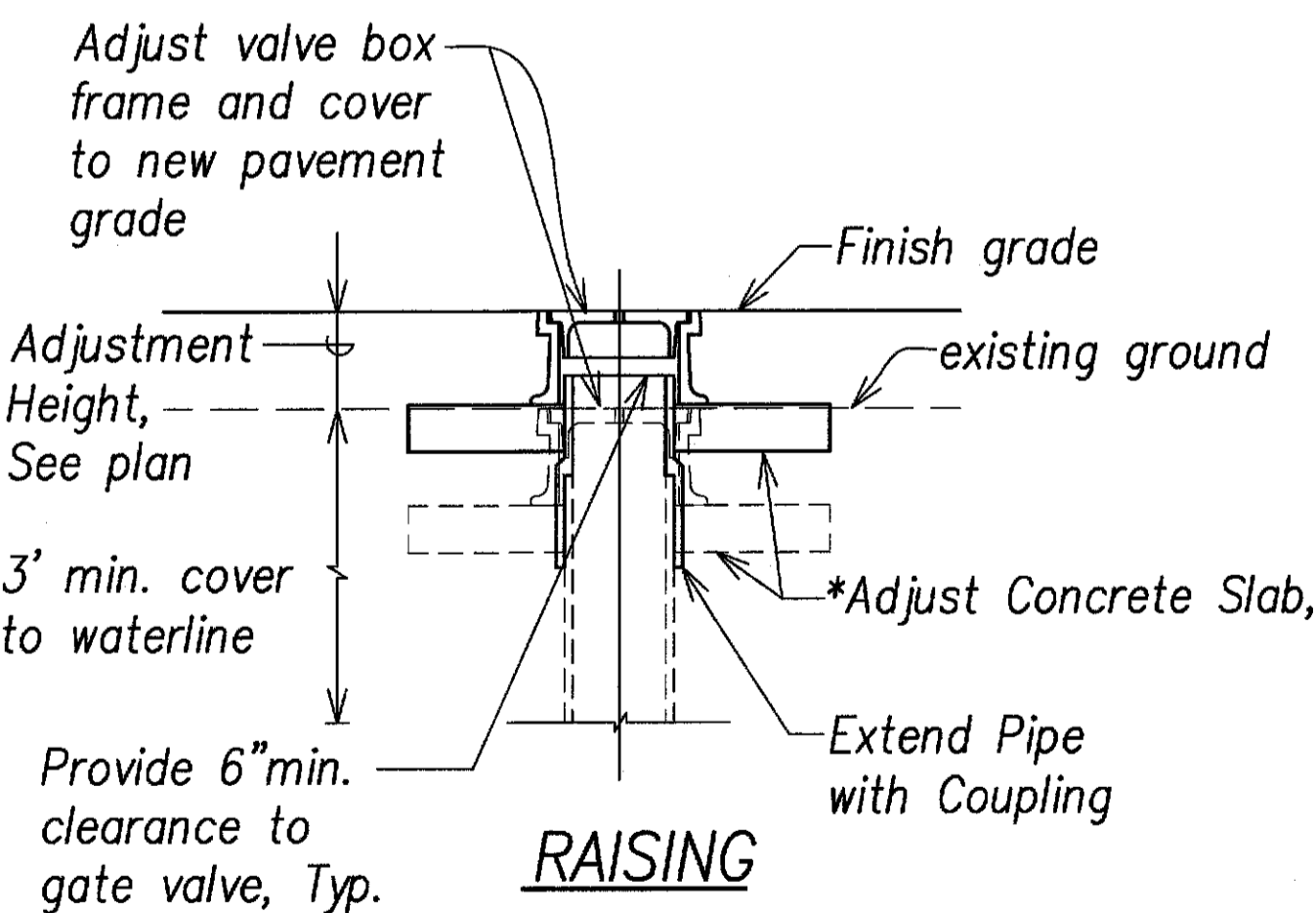
FED. ROAD DIST. NO.	STATE	PROJ. NO.	FISCAL YEAR	SHEET NO.	TOTAL SHEETS
HAWAII	HAW.	HWY-0-06-09	2011	10	25



WATER METER FRAME AND COVER ADJUSTMENT
Not to scale



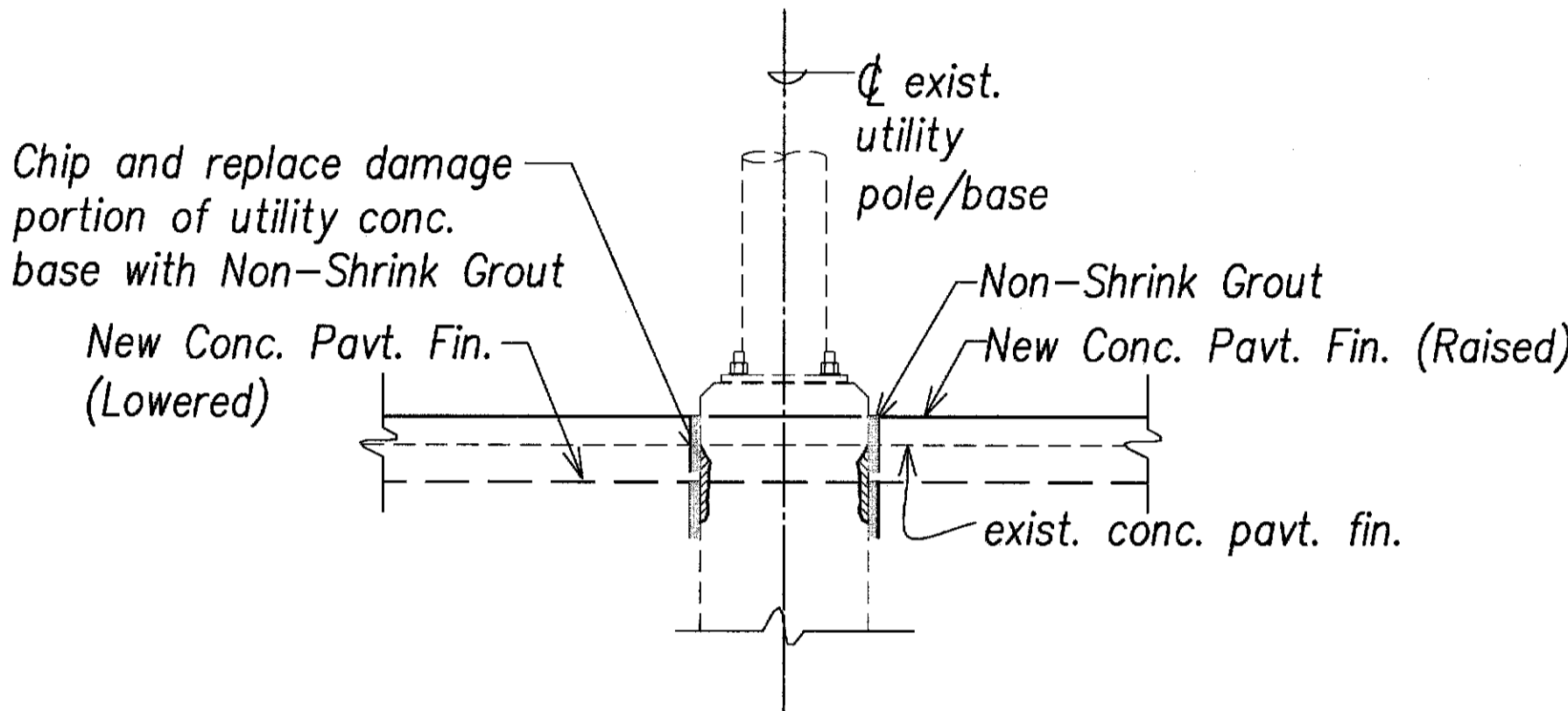
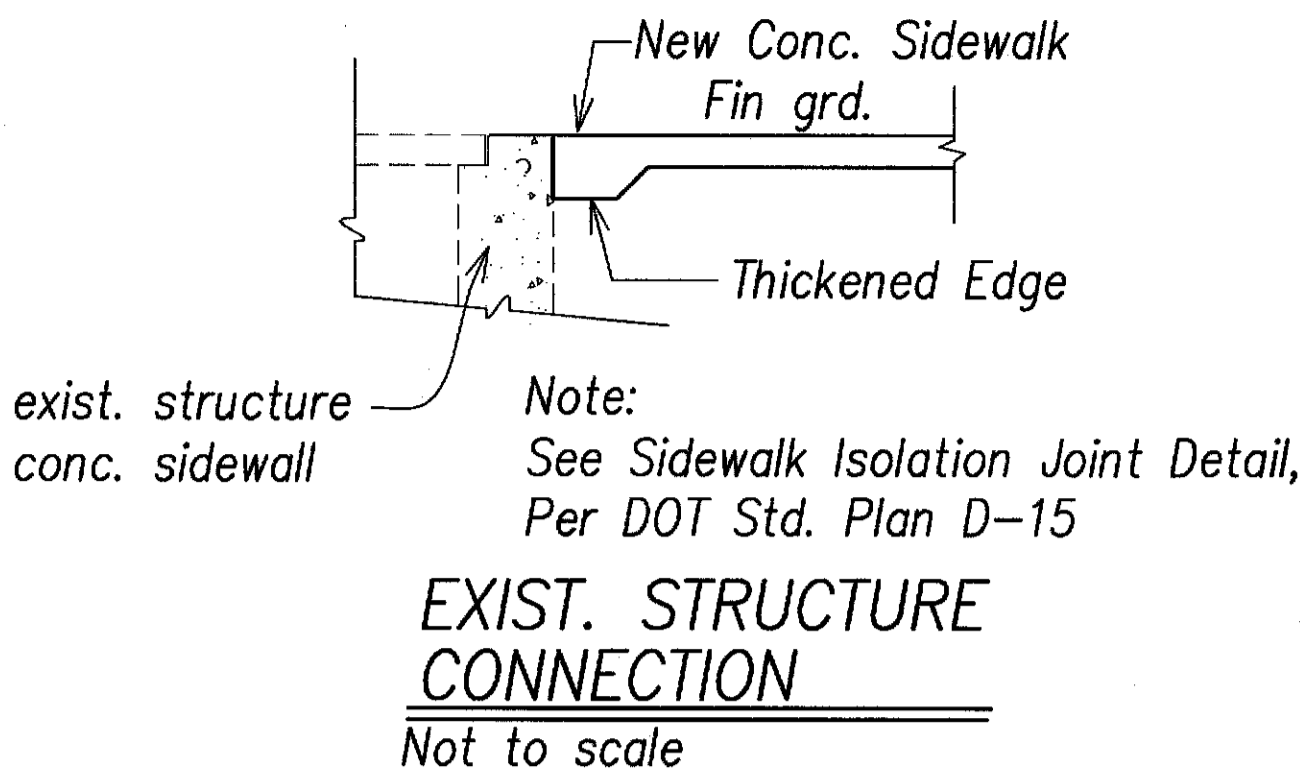
LOWERING



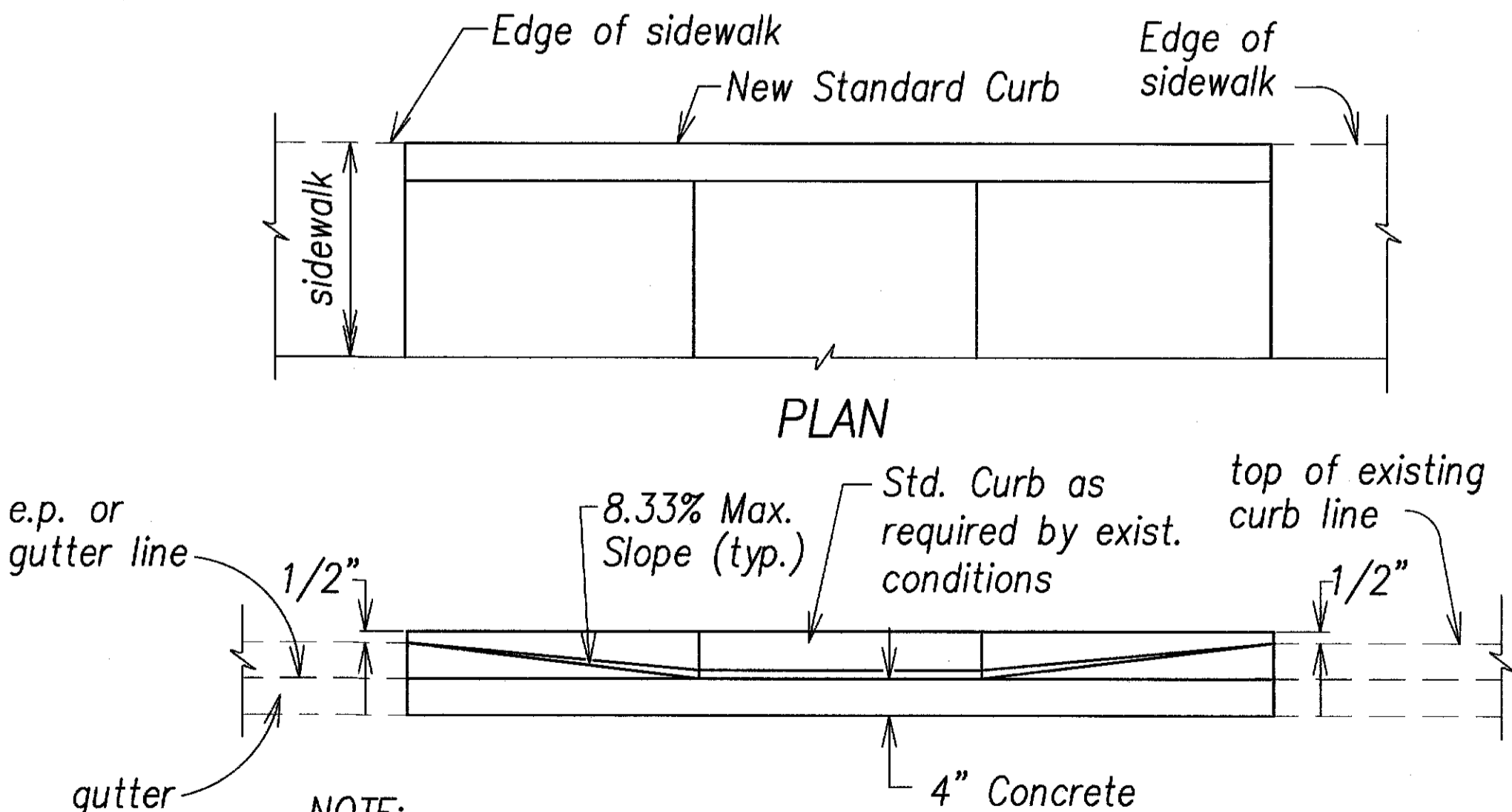
RAISING

*Note: If Valve is Located in Dirt Area and Less than 6" ϕ , Provide a 12"x4" Thick Collar

ADJUSTMENT OF VALVE BOX
Not to scale

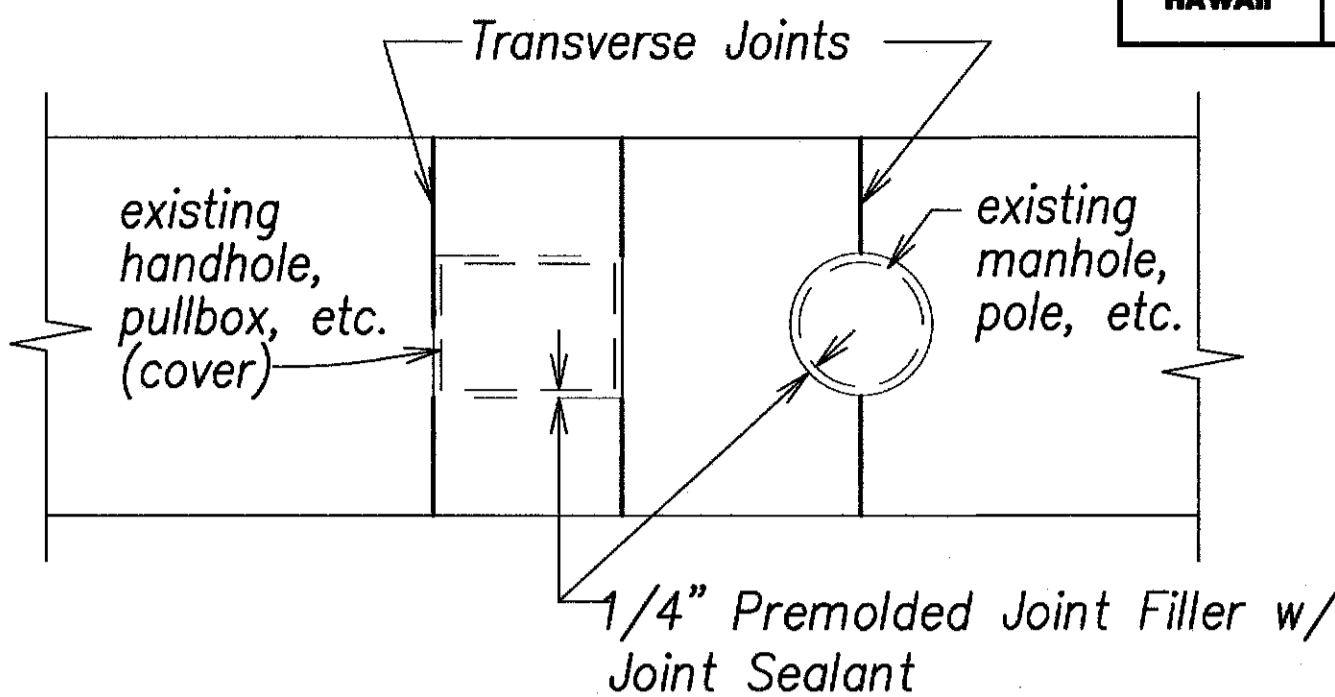


UTILITY CONC. BASE RESTORATION
Not to scale

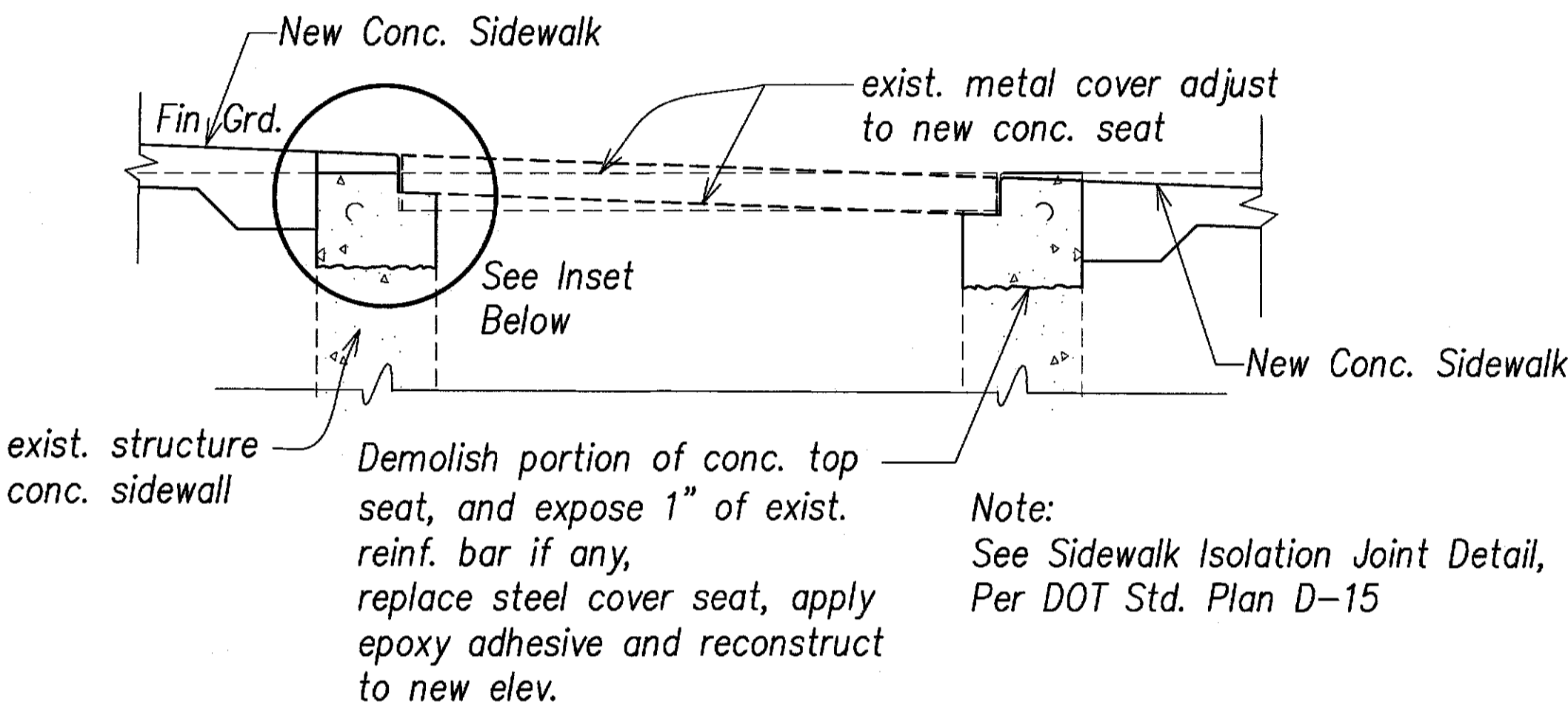


NOTE:
All curb ramps shall be reinforced.

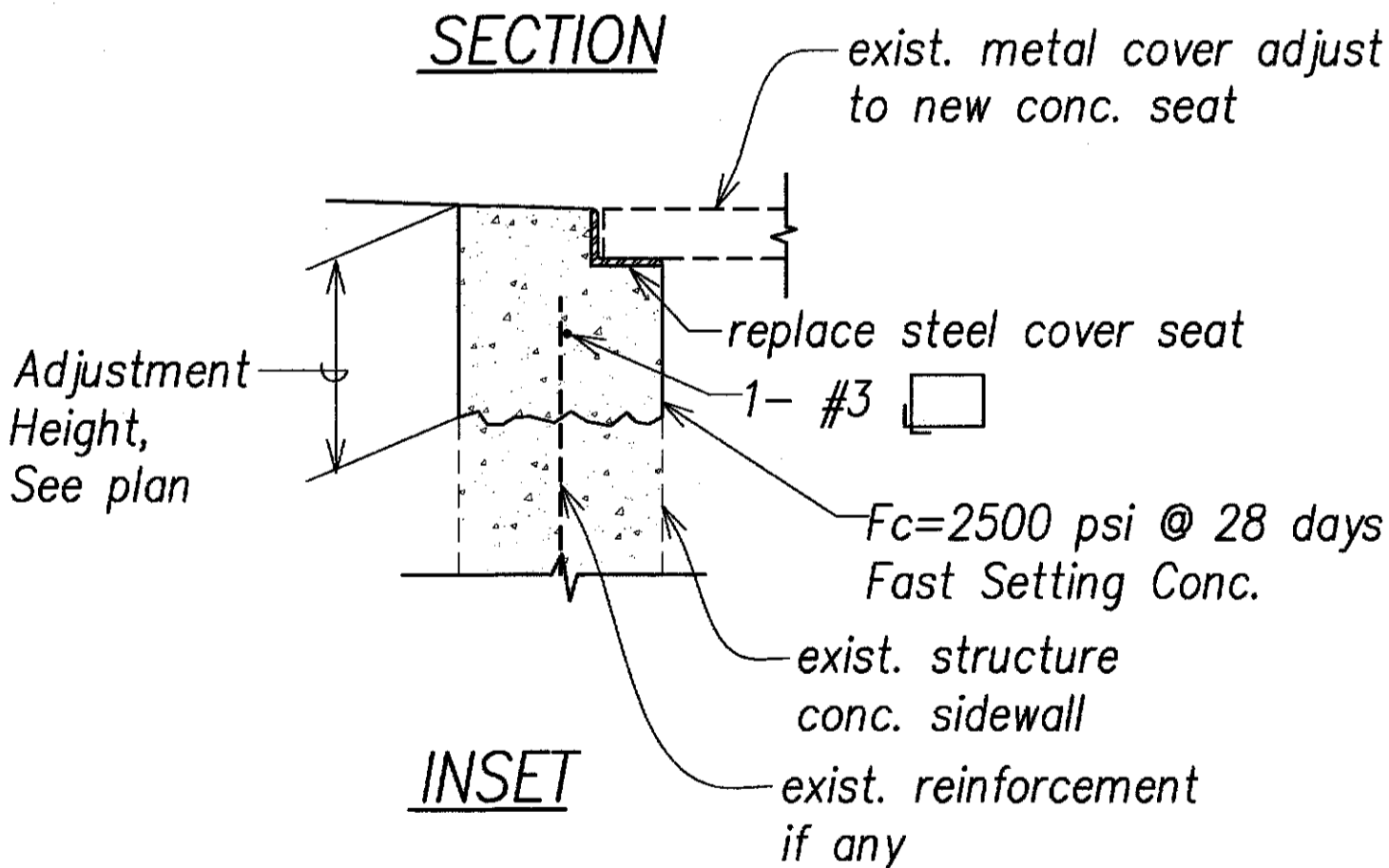
DETAIL - BACK CURB
Not to scale



SIDEWALK ISOLATION JOINT DETAIL
Not to scale



Note: See Sidewalk Isolation Joint Detail, Per DOT Std. Plan D-15



EXIST. STRUCTURE RECONSTRUCTION
Not to scale



THIS WORK WAS PREPARED BY ME OR UNDER MY SUPERVISION AND CONSTRUCTION OF THIS PROJECT WILL BE UNDER MY OBSERVATION.

DATE: April 30, 2014
SIGNATURE: [Signature]
"OBSERVATION OF CONSTRUCTION" IS DEFINED IN CHAPTER 16-115, HAWAII ADMINISTRATIVE RULES ENTITLED "PROFESSIONAL ENGINEERS, ARCHITECTS, SURVEYORS AND LANDSCAPE ARCHITECTS".

8/27/12	Added details and C.E.B. signature block
DATE	REVISION
STATE OF HAWAII DEPARTMENT OF TRANSPORTATION HIGHWAYS DIVISION MISC. DETAILS - 1 Pedestrian Facilities & ADA Compliance at Various Locations Proj. No. HWY-0-06-09	
Scale: None	Date: April 2011
SHEET No. C-9 OF 25 SHEETS	

