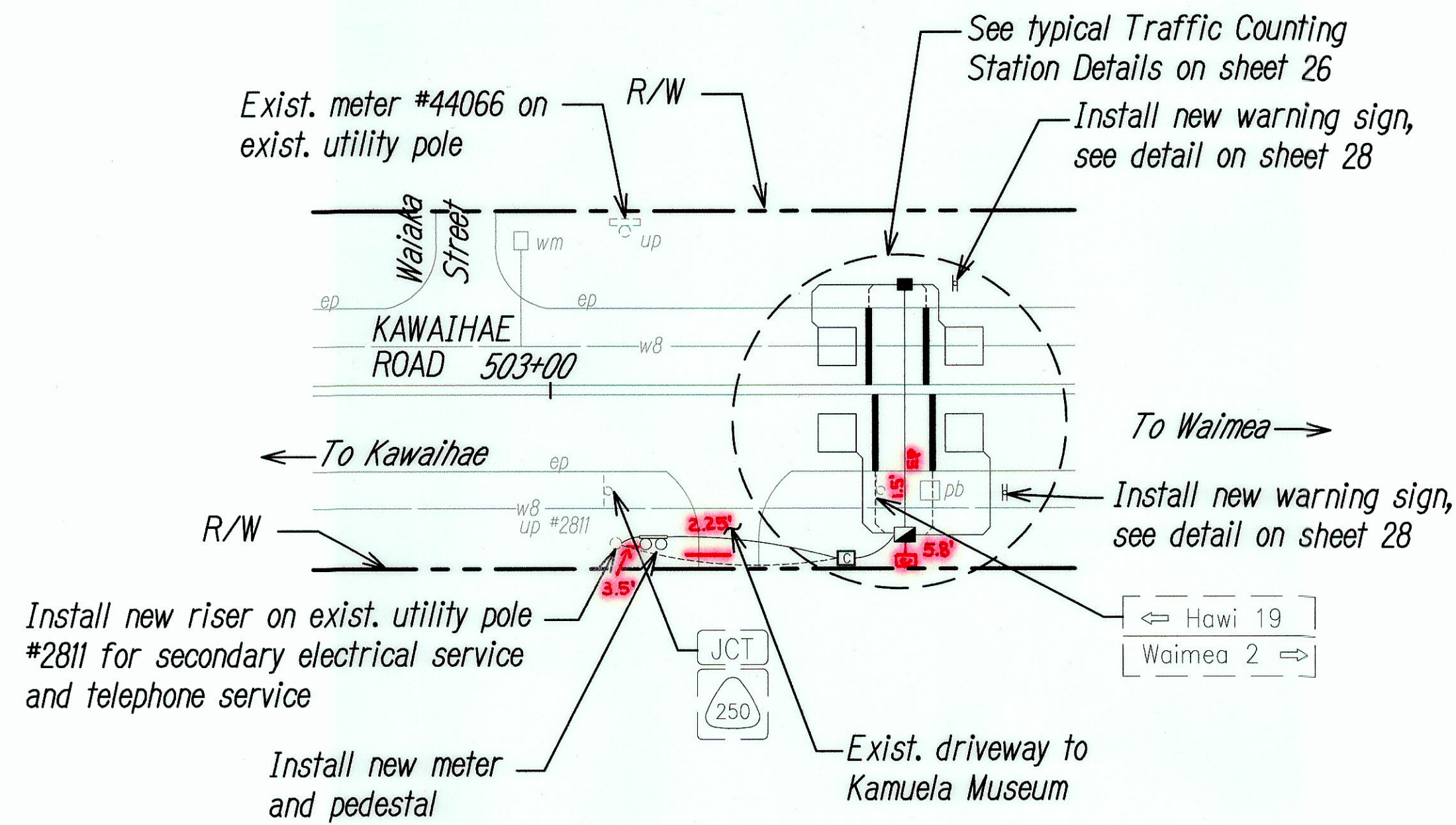


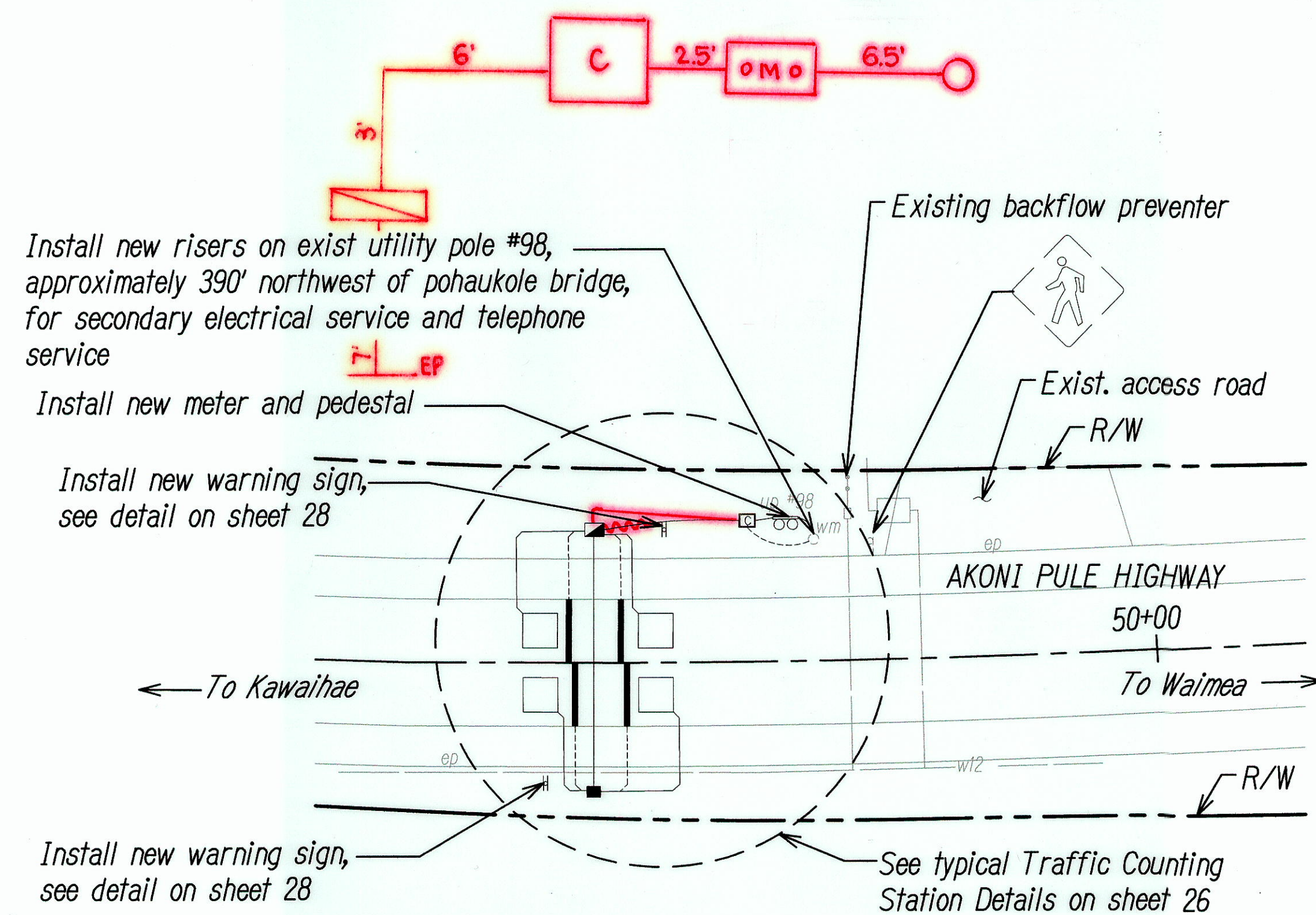
FED. ROAD DIST. NO.	STATE	PROJECT NO.	FISCAL YEAR	SHEET NO.	TOTAL SHEETS
HAWAII	HAW.	STP-1500(35)	2008	18	41



PROPOSED STA. 16 ON KAWAIHAE ROAD

ROUTE 19, M.P. 58.896, HAWAII

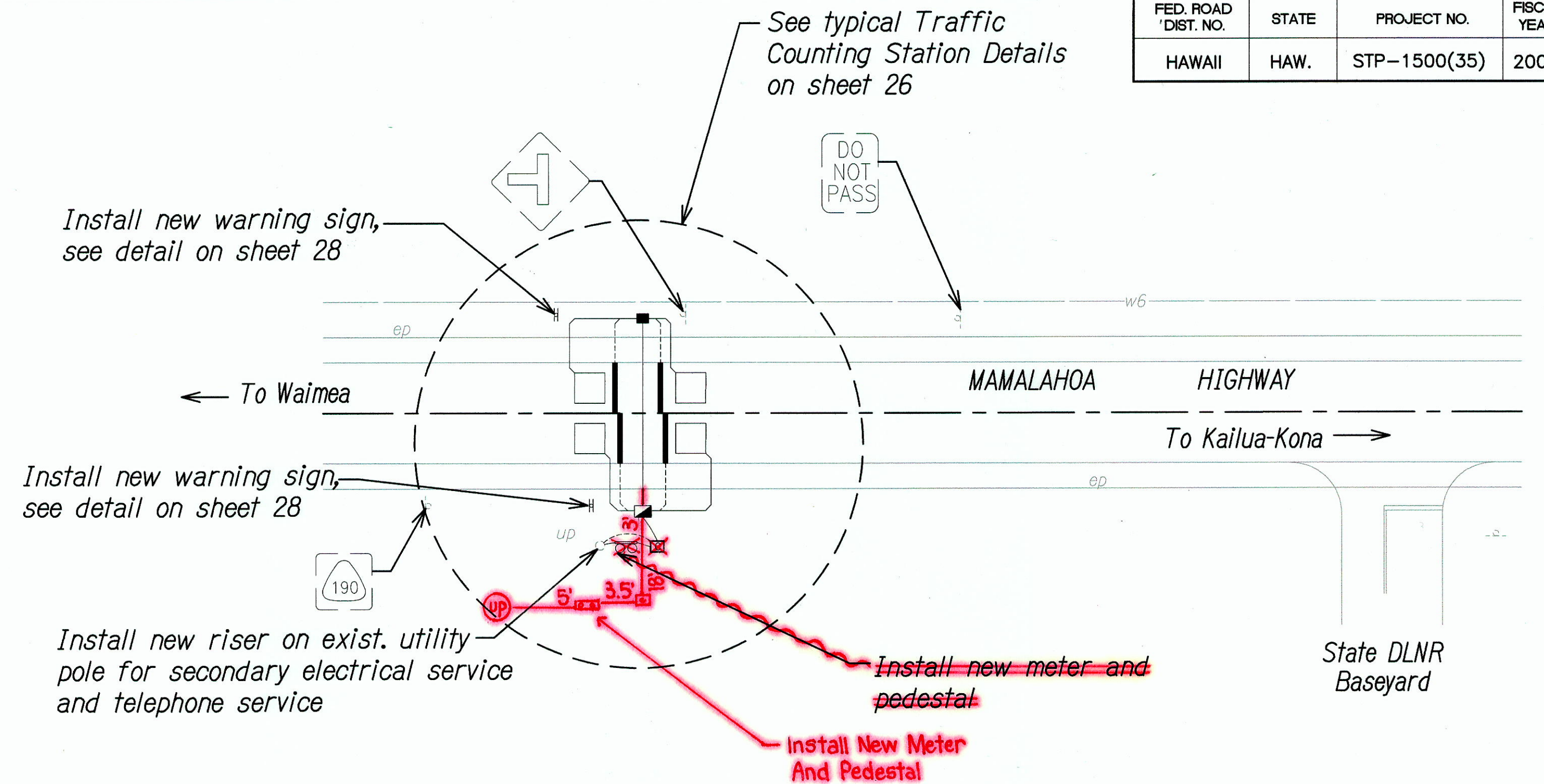
Scale: 1"=20'



PROPOSED STA. 18 ON AKONI PULE HIGHWAY

ROUTE 270, M.P. 0.760, HAWAII

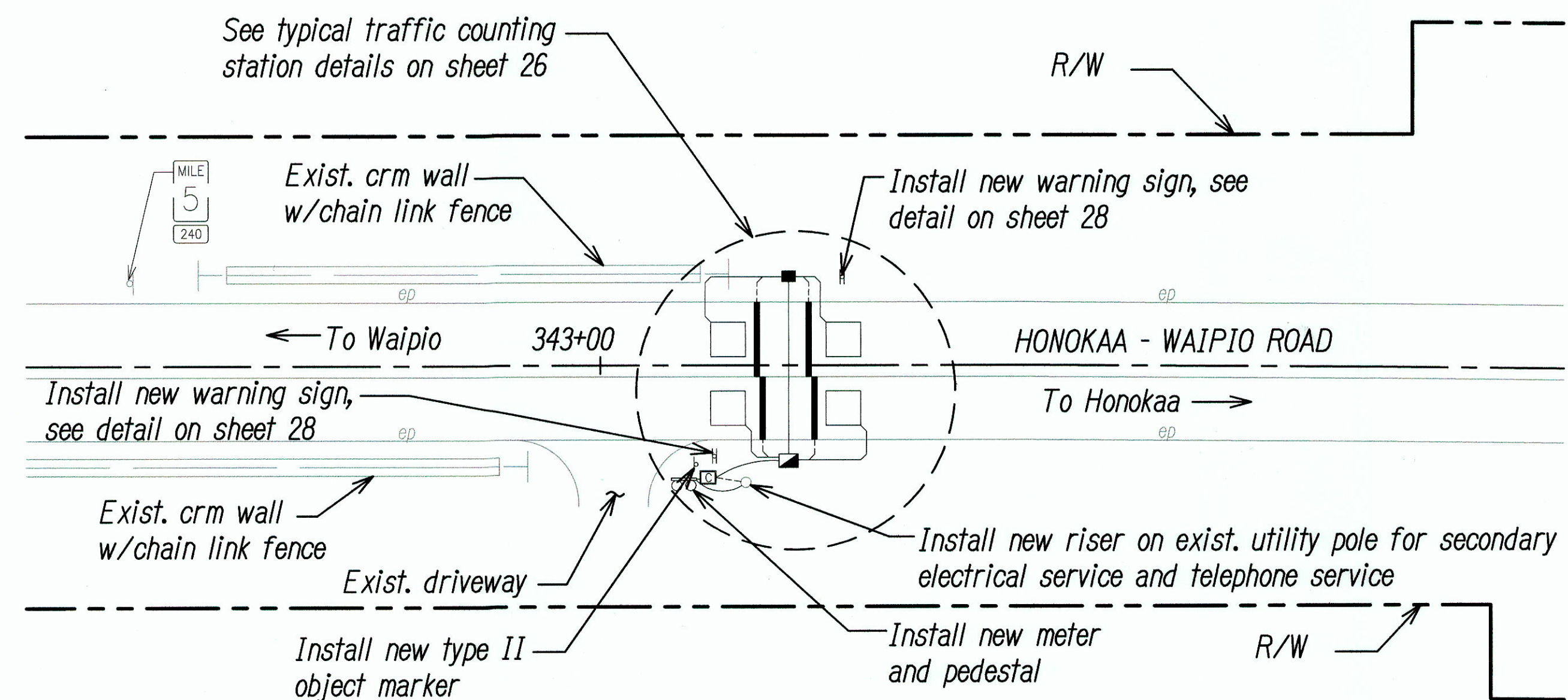
Scale: 1"=20'



PROPOSED STA. 17 ON MAMALAHOA HIGHWAY

ROUTE 190, M.P. 1.074, HAWAII

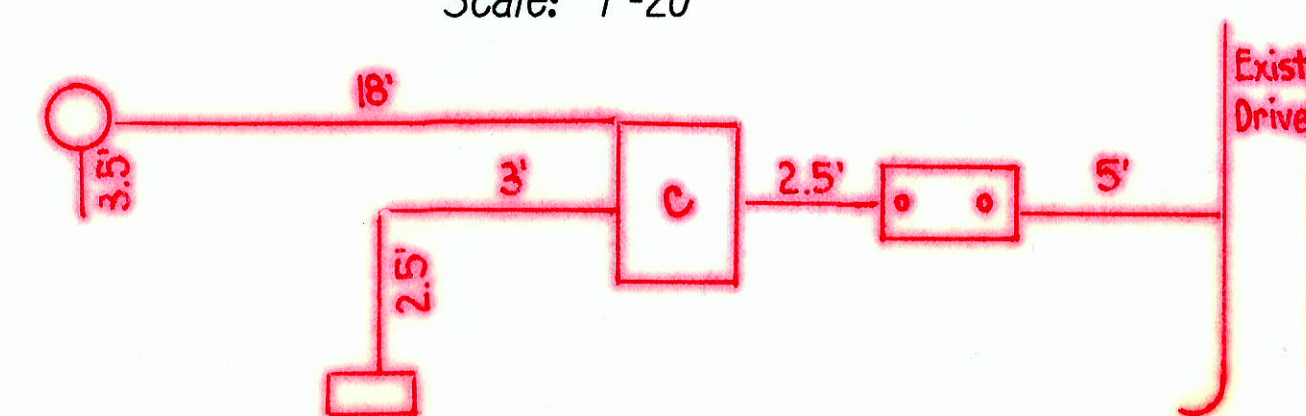
Scale: 1"=20'



PROPOSED STA. 19 ON HONOKAA-WAIPIO ROAD

ROUTE 240, M.P. 4.980, HAWAII

Scale: 1"=20'



STATE OF HAWAII
DEPARTMENT OF TRANSPORTATION
HIGHWAYS DIVISION
**TRAFFIC COUNTING STATION
PLANS - HAWAII - 1**
TRAFFIC COUNTING STATIONS
AT VARIOUS LOCATIONS
F.A.P. NO. STP-1500(35)

Scale: 1"=20'

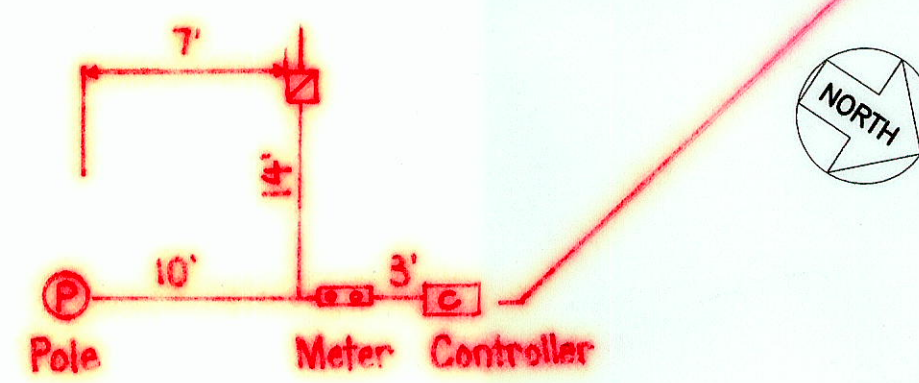
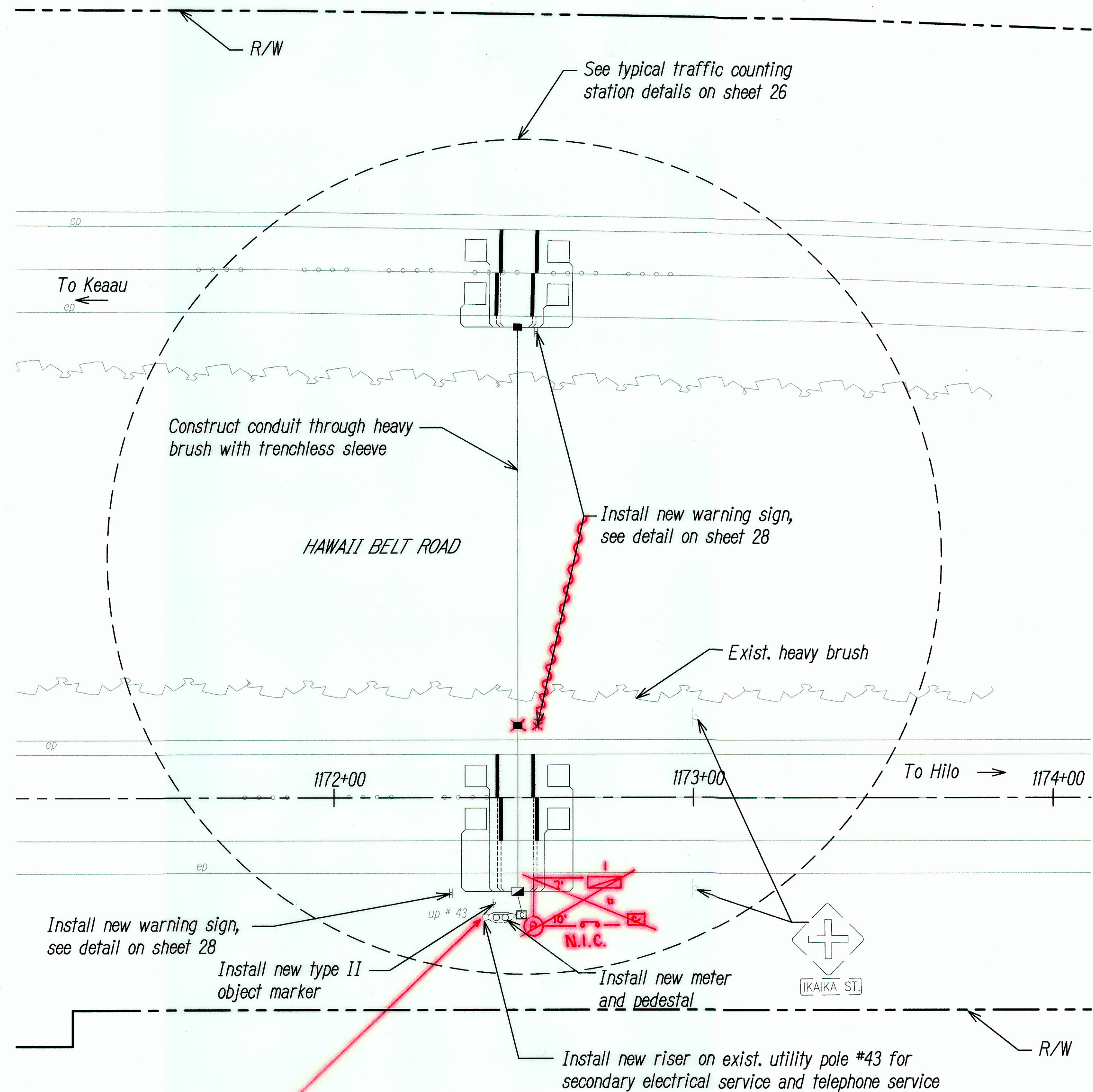
Date: June 2008

SHEET No. C-11 OF 24 SHEETS

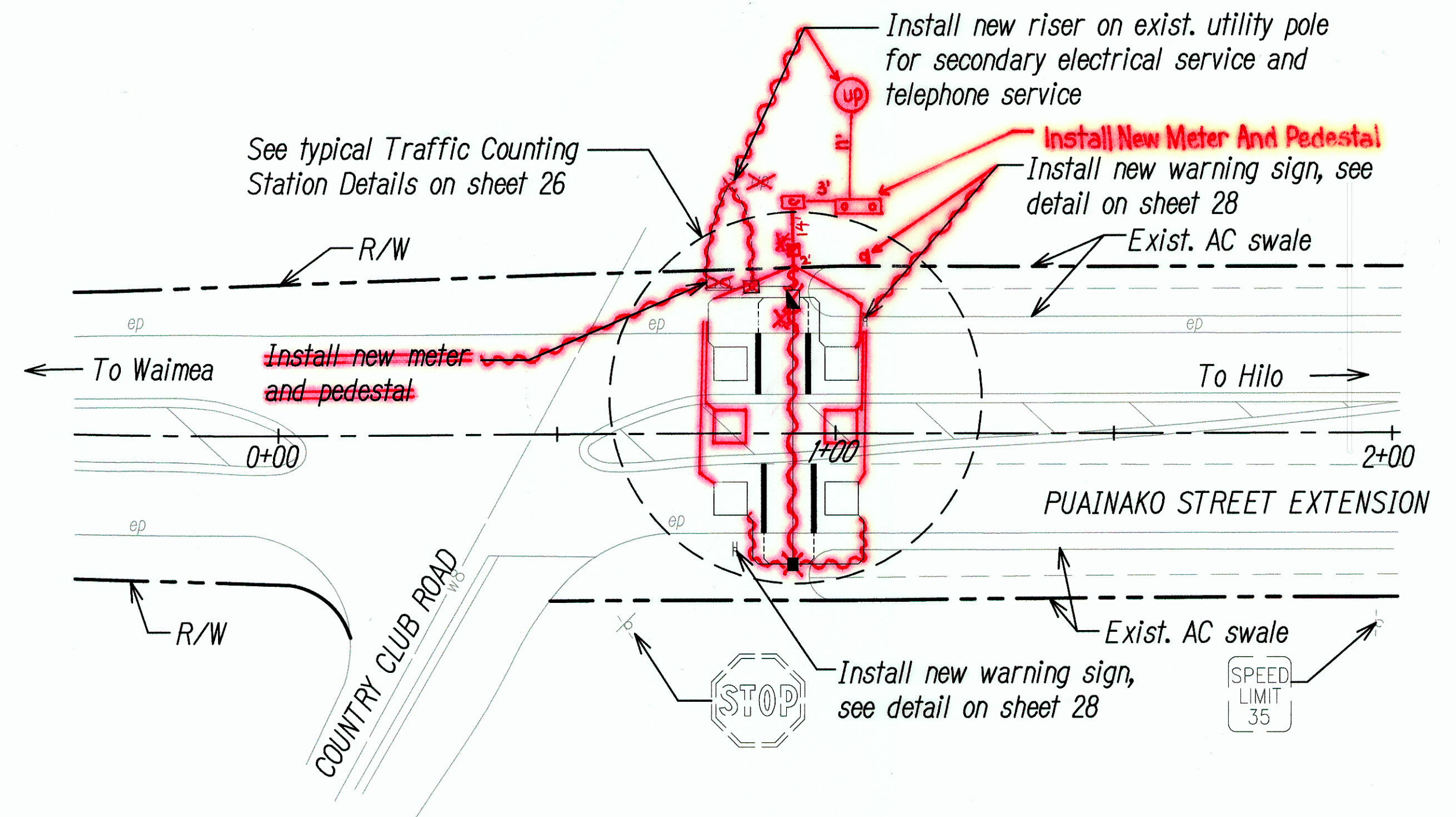
"AS-BUILT"

18

FED. ROAD DIST. NO.	STATE	PROJECT NO.	FISCAL YEAR	SHEET NO.	TOTAL SHEETS
HAWAII	HAW.	STP-1500(35)	2008	20	41



PROPOSED STA. 21 ON HAWAII BELT ROAD
ROUTE 11, M.P. 5.290, HAWAII
 Scale: 1"=20'



PROPOSED STA. 22 ON PUAINAKO STREET EXTENSION
ROUTE 2000, M.P. 7.190, HAWAII
 Scale: 1"=20' **5.98**



STATE OF HAWAII
DEPARTMENT OF TRANSPORTATION
HIGHWAYS DIVISION
TRAFFIC COUNTING STATION
PLANS - HAWAII - 3
TRAFFIC COUNTING STATIONS
AT VARIOUS LOCATIONS
F.A.P. NO. STP-1500(35)
Scale: 1"=20'

Date: June 2008

ORIGINAL PLAN	SURVEY PLOTTED BY	DATE
NOTE BOOK	DRAWN BY	
	DESIGNED BY	
	QUANTITIES BY	
	CHECKED BY	

"AS-BUILT"