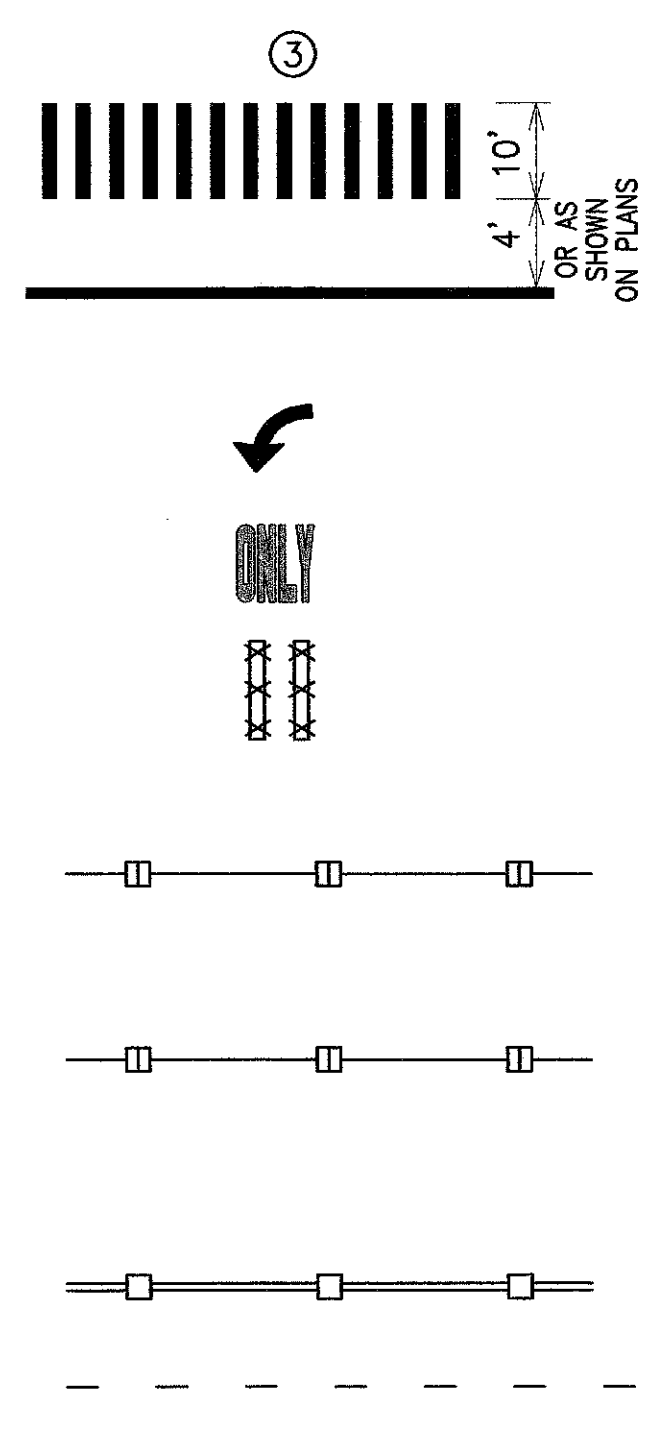


FED. ROAD DIST. NO.	STATE	FED. AID PROJ. NO.	FISCAL YEAR	SHEET NO.	TOTAL SHEETS
HAWAII	HAW.	STP-0001(36)	2008	20	42

STRIPING LEGEND



CROSSWALK AND STOP LINE (THERMOPLASTIC EXTRUSION). ALL STOP LINES SHALL BE AS NOTED FROM CROSSWALK. THE CIRCLED NUMBER INDICATES THE NUMBER OF LANES FOR QUANTITIES.

PAVEMENT ARROW (THERMOPLASTIC EXTRUSION)

PAVEMENT WORD (THERMOPLASTIC EXTRUSION)

REMOVE EXIST. STRIPING

8" SOLID WHITE STRIPE (THERMOPLASTIC EXTRUSION) WITH TYPE C RAISED PAVEMENT MARKERS @ 20'-0" O.C.

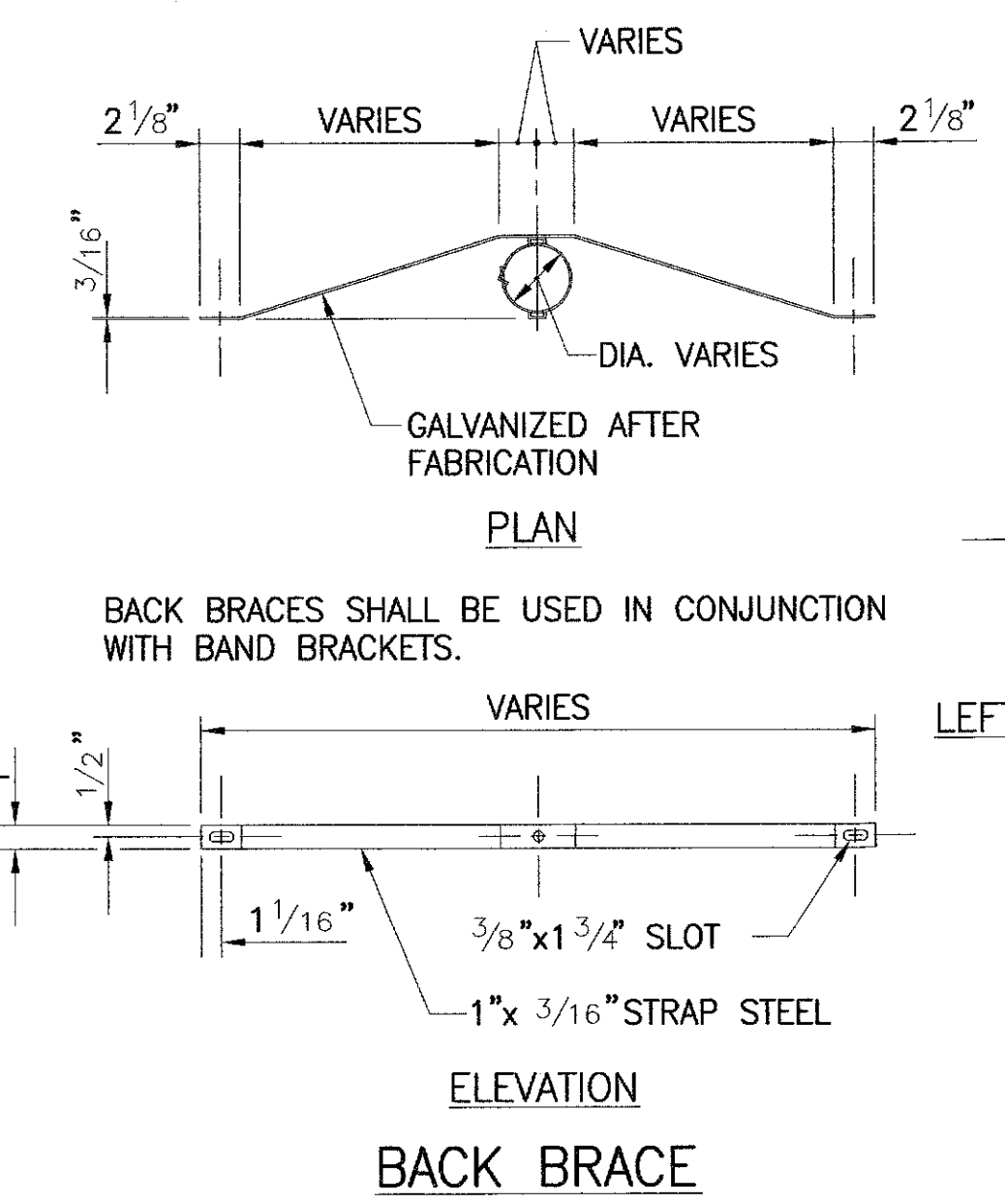
4" SOLID WHITE STRIPE (THERMOPLASTIC EXTRUSION) WITH TYPE C RAISED PAVEMENT MARKERS @ 20'-0" O.C.

4" DOUBLE SOLID YELLOW STRIPE (THERMOPLASTIC EXTRUSION) WITH TYPE D RAISED PAVEMENT MARKERS @ 20'-0" O.C.

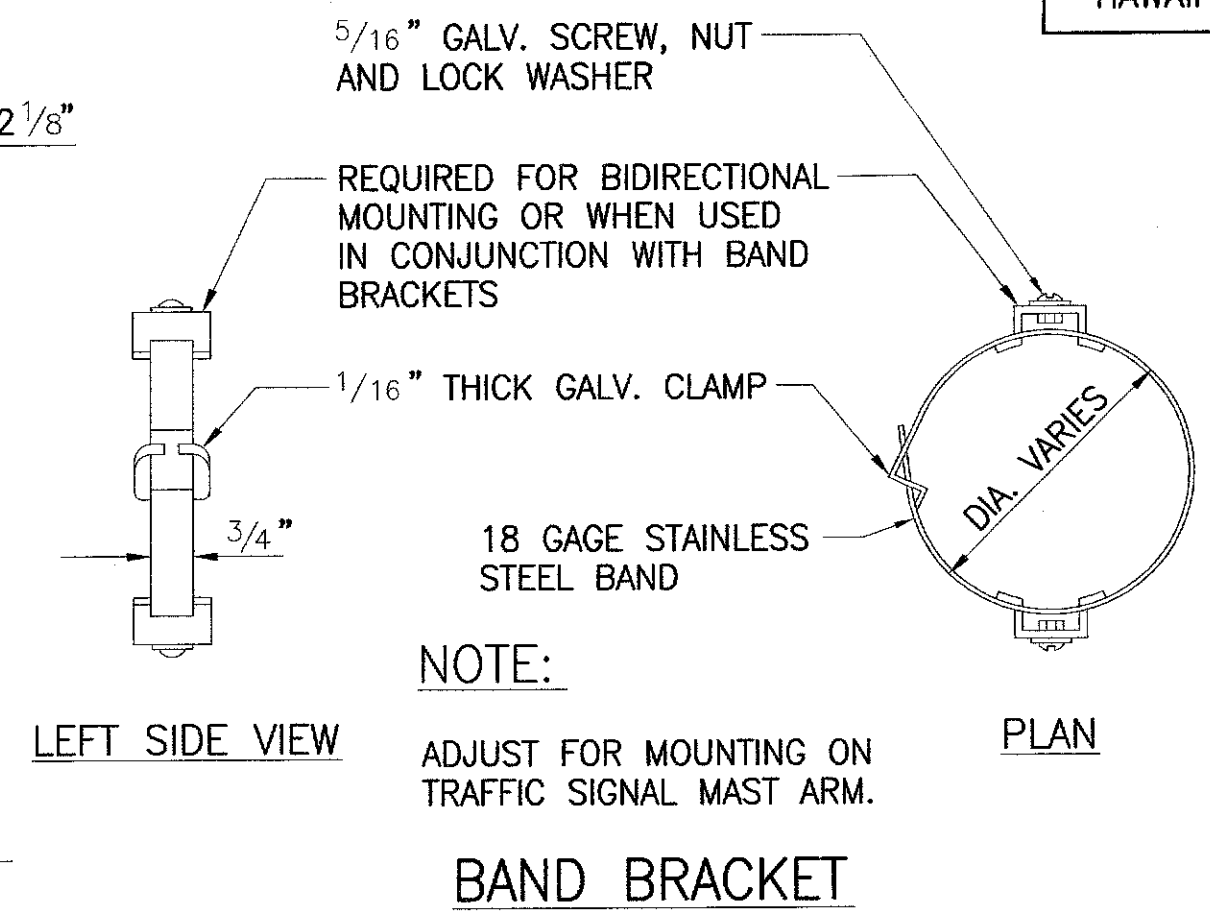
4" SOLID WHITE STRIPE (THERMOPLASTIC EXTRUSION) 2' LONG @ 6' O.C.

NOTES

- LAYOUT OF PAVEMENT MARKINGS AND STRIPING SHALL BE DONE BY THE CONTRACTOR AND APPROVED BY THE ENGINEER PRIOR TO ANY INSTALLATION WORK.
- EXISTING PAVEMENT MARKINGS NOT INCORPORATED IN THE FINAL TRAFFIC PATTERN SHALL BE REMOVED AS DIRECTED BY THE ENGINEER. COSTS SHALL BE CONSIDERED INCIDENTAL TO THE VARIOUS PAVEMENT MARKING ITEMS.
- RAISED PAVEMENT MARKERS SHALL NOT BE INSTALLED WITHIN CROSSWALKS.
- FINAL LOCATIONS OF ALL SIGNS SHALL BE APPROVED BY THE ENGINEER PRIOR TO ANY INSTALLATION WORK.
- EXISTING SIGNS NOT SHOWN ON THESE PLANS SHALL REMAIN AS POSTED UNLESS OTHERWISE DIRECTED BY THE ENGINEER. REMOVAL AND DISPOSAL OF EXISTING SIGNS AND/OR POSTS AS DESIGNATED ON THESE PLANS SHALL BE INCIDENTAL TO THE VARIOUS SIGNING ITEMS.
- FINAL LOCATIONS OF ALL STOP LINES SHALL BE APPROVED BY THE ENGINEER PRIOR TO INSTALLATION.
- ALL PAVEMENT STRIPING SHALL BE AS NOTED ON THE LEGEND OR PLANS.
- EXISTING CROSSWALKS WITH DETERIORATED STRIPING, AS DETERMINED BY THE ENGINEER, SHALL BE RESTRIPE, WHETHER OR NOT INDICATED ON THE PLANS AT NOT COST TO THE CITY.
- COSTS OF REMOVAL AND RELOCATION OF EXISTING SIGNS SHALL BE CONSIDERED INCIDENTAL TO VARIOUS SIGNING AND STRIPING PAY ITEMS.
- EXISTING PAVEMENT STRIPING, RPM'S, AND CROSSWALKS DAMAGED AS A RESULT OF CONSTRUCTION SHALL BE RESTORED BY THE CONTRACTOR AT NO COST TO THE CITY, UNLESS THE RESTRIPE HAS BEEN CALLED OUT IN THESE CONSTRUCTION PLANS.

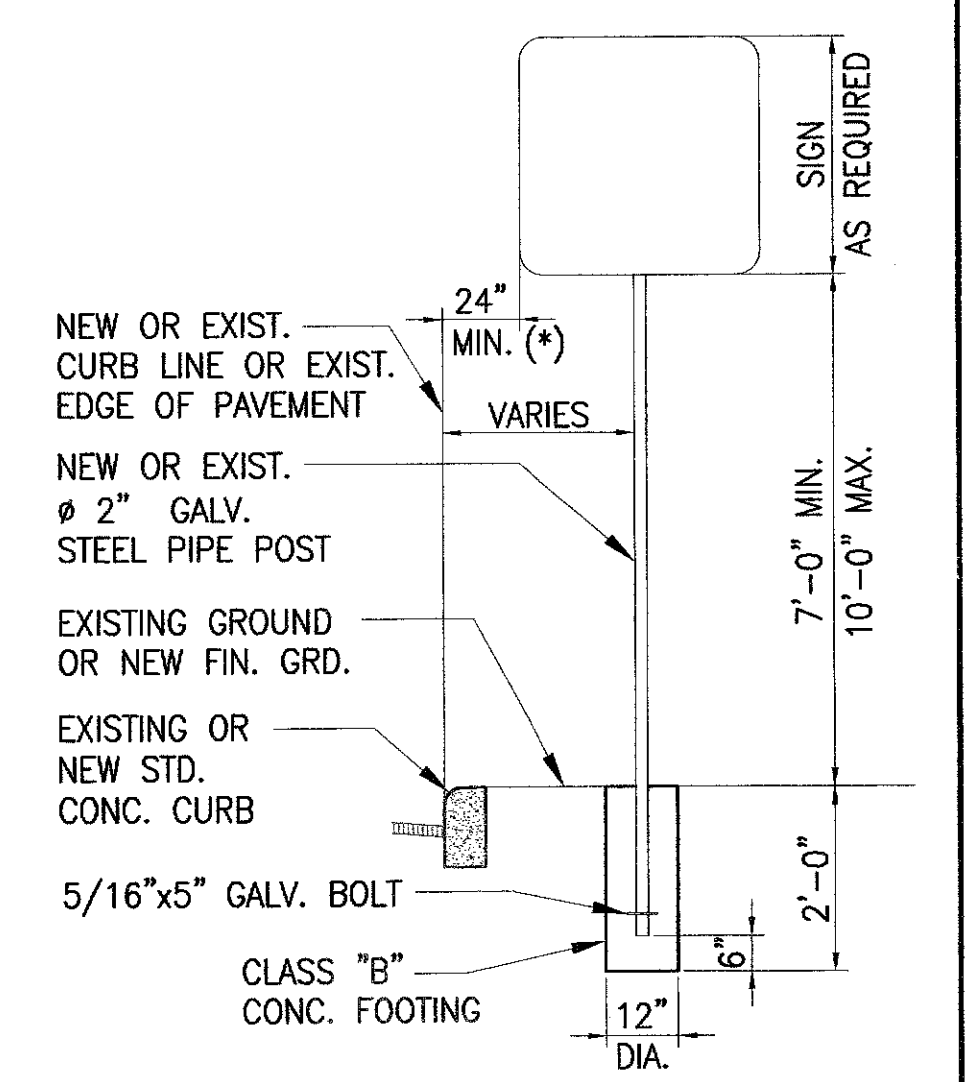


BACK BRACE



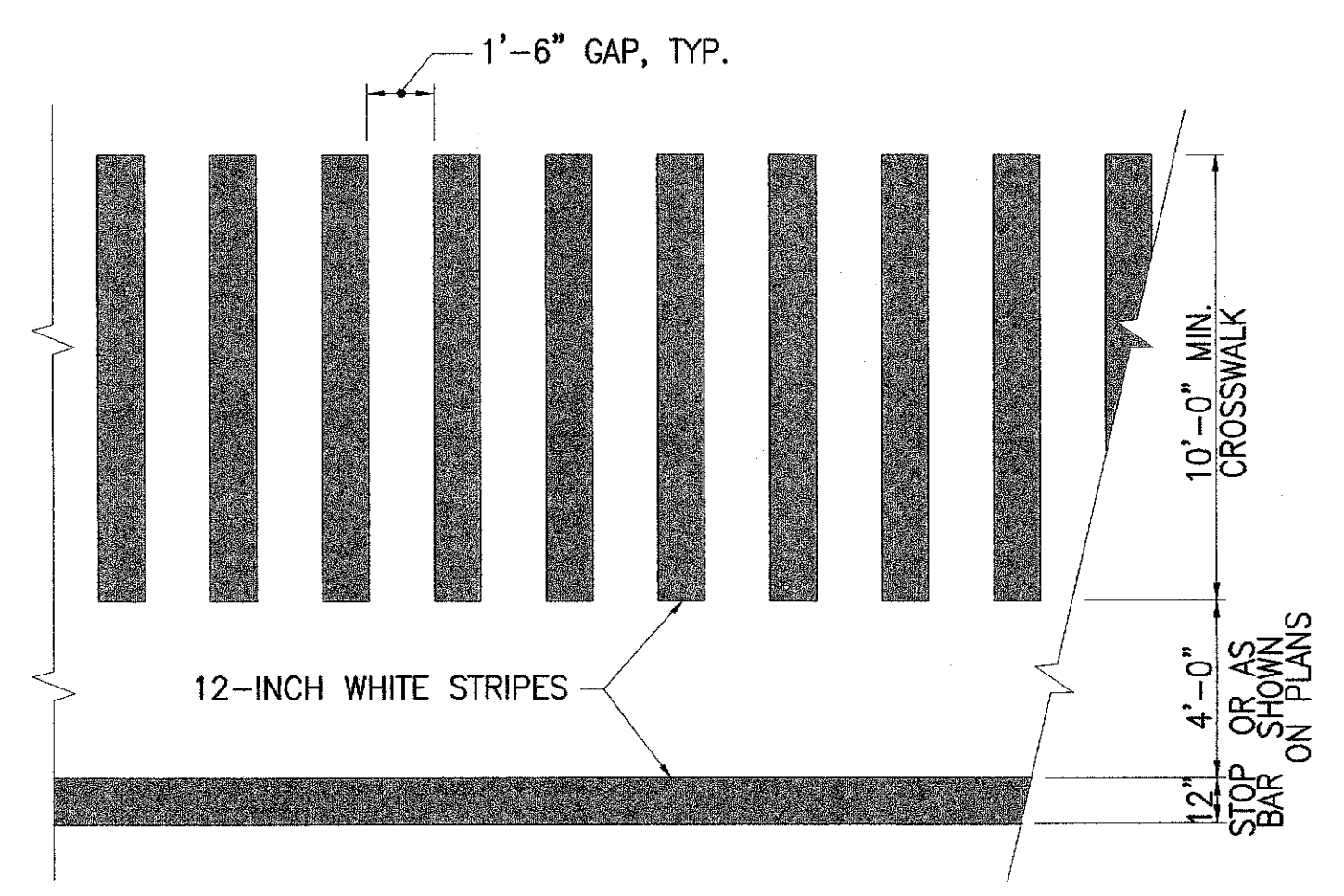
BAND BRACKET

TYPICAL MOUNTING DETAILS
NOT TO SCALE

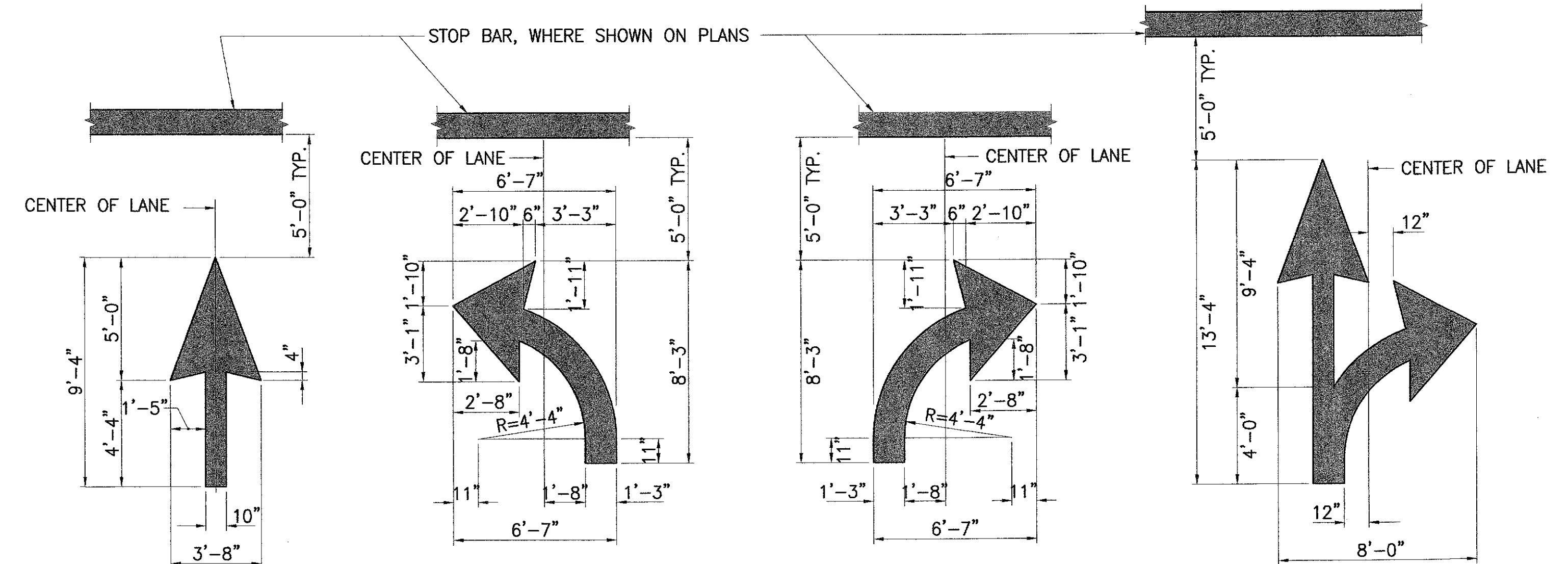


INSTALLATION OF NEW OR RELOCATED SIGN POST
NOT TO SCALE

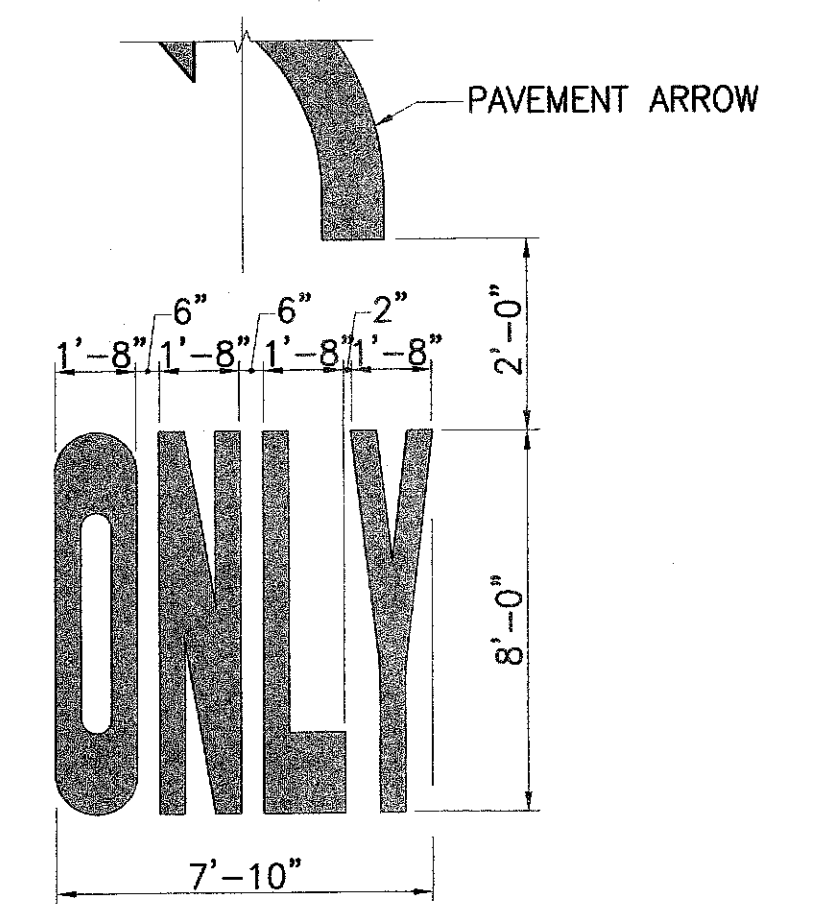
(*) ALL SIGNS INSTALLATIONS MUST MEET LATERAL AND HEIGHT CLEARANCES, INCLUDING NEW SIGNS THAT WILL BE POSTED ON TO EXIST. SIGN POSTS. EXTEND, RELOCATE OR REPLACE AS REQUIRED TO MEET CLEARANCE REQUIREMENTS.



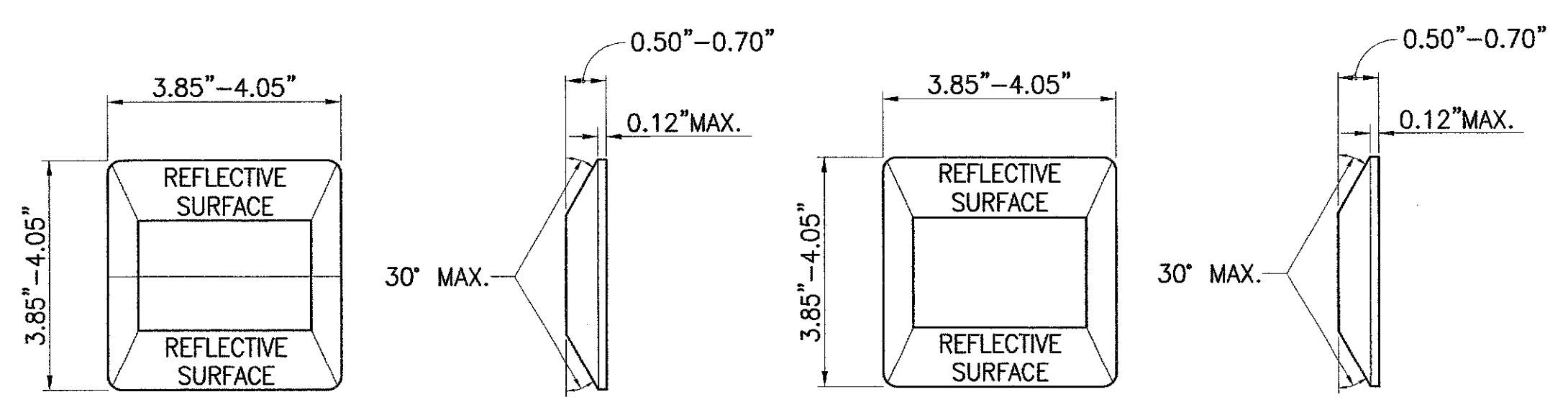
TYPICAL CROSSWALK & STOP BAR
NOT TO SCALE



TYPICAL PAVEMENT ARROW DETAILS
NOT TO SCALE



PAVEMENT WORD DETAIL
NOT TO SCALE



STANDARD RAISED PAVEMENT MARKER DETAILS
NOT TO SCALE

REVISION	DATE	DESCRIPTION	ENGINEER	APPROVED

KEITH K. NIJIA
LICENSED PROFESSIONAL ENGINEER
No. 8228-C
HAWAII, U.S.A.

THIS WORK WAS PREPARED BY ME OR UNDER MY SUPERVISION AND CONSTRUCTION OF THIS PROJECT WILL BE UNDER MY OBSERVATION.

ATA AUSTIN, TSUTSUMI & ASSOCIATES, INC.
REGISTERED PROFESSIONAL ENGINEERS

DEPARTMENT OF TRANSPORTATION SERVICES
CITY & COUNTY OF HONOLULU

TRAFFIC CONTROL SIGNALIZATION
AT VARIOUS LOCATIONS ON OAHU, PHASE X
FEDERAL-AID NO. STP-0001(36)

SIGNING AND STRIPING
NOTES AND LEGEND

DESIGN	LHY	C-20
DRAWN	LHY	
CHECKED	KKN	SHEET 20
DATE	08/04/08	OF 42 SHEETS

PROJECT NO. FILE DRAW FOLDER

FILED 2008 08 02 02:00 PM HONOLULU, HAWAII