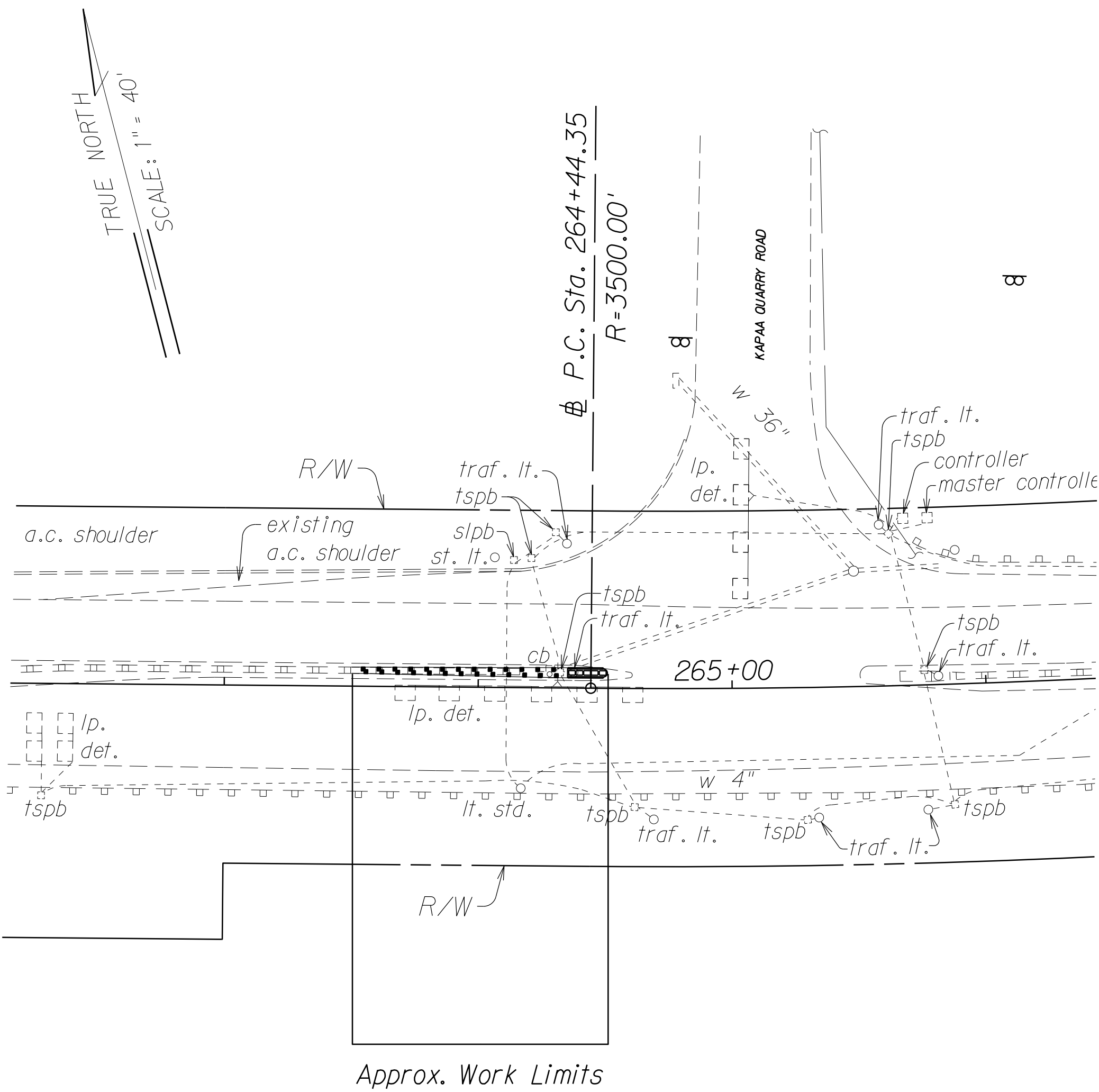


FED. ROAD DIST. NO.	STATE	FED. AID PROJ. NO.	FISCAL YEAR	SHEET NO.	TOTAL SHEETS
HAWAII	HAW.	STP-0300(187)	2023	9	27



ORIGINAL PLAN	SURVEY PLOTTED BY	DATE
NOTE BOOK	DRAWN BY	
	DESIGNED BY	
	CHECKED BY	

STATE OF HAWAII
DEPARTMENT OF TRANSPORTATION
HIGHWAYS DIVISION

ROADWAY PLAN

SITE 2 ROUTE 61 PALI HIGHWAY

GUARDRAIL AND SHOULDER IMPROVEMENTS

At Various Locations, Phase 3, Oahu

Federal-Aid Project No. STP-0300(187)

Scale: 1" = 40' Date: DECEMBER, 2023

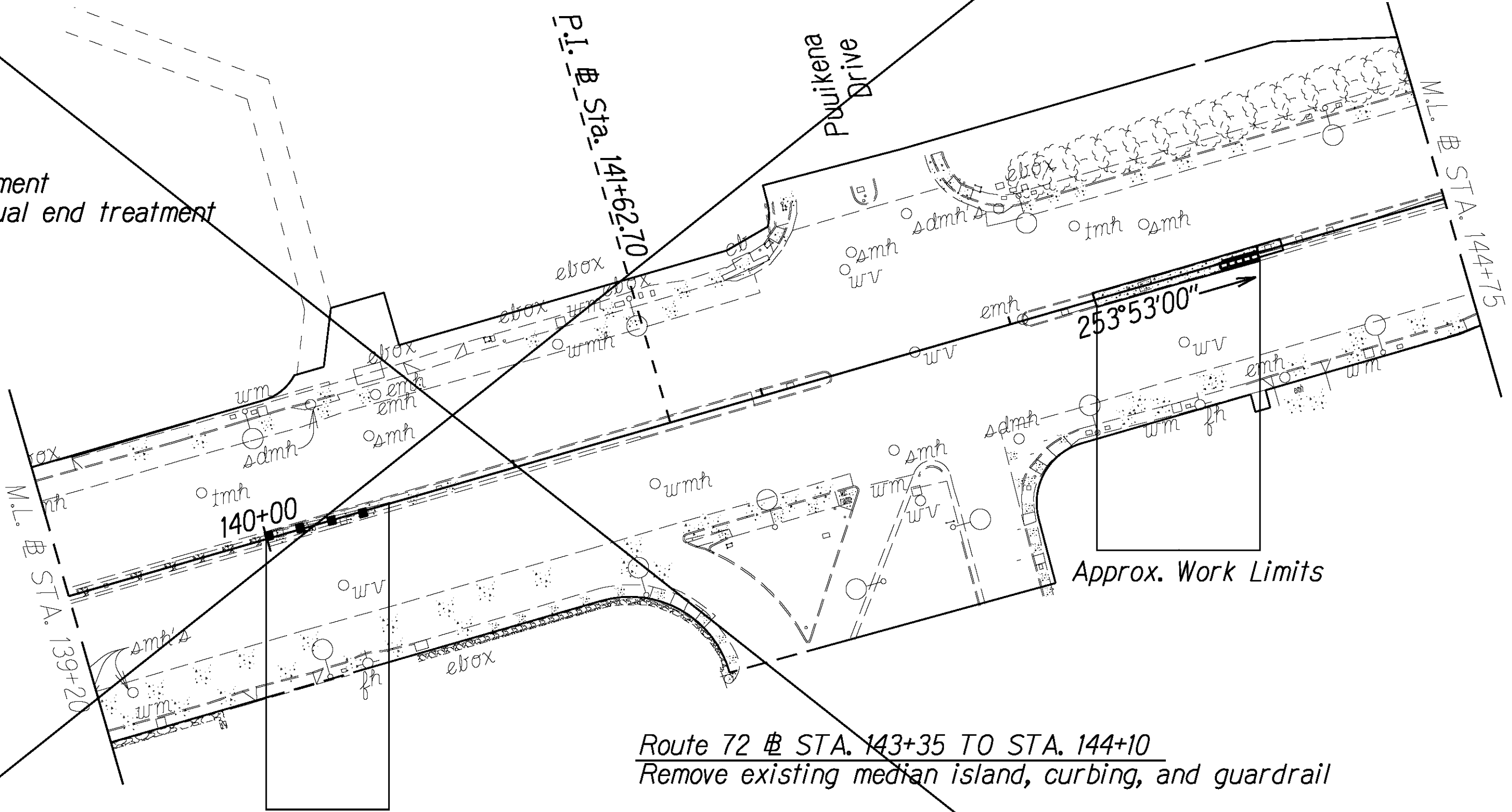
SHEET No. 2 OF 14 SHEETS

FED. ROAD DIST. NO.	STATE	FED. AID PROJ. NO.	FISCAL YEAR	SHEET NO.	TOTAL SHEETS
HAWAII	HAW.	STP-0300(187)	2023	ADD. 10	27

 **N.I.C.**

TRUE NORTH
SCALE: 1" = 40'

Route 72 @ STA. 140+00
Remove existing guardrail and end treatment
Replace with MSKT TL-3 or approved equal end treatment



Route 72 @ STA. 143+35 TO STA. 144+10
Remove existing median island, curbing, and guardrail

Construct new 4" curb type 2G and 4" PCCP median.
STA. 143+45 to STA. 144+00 (layout will match existing).
Transition new median to existing median from
STA. 143+35 to 143+45 and STA. 144+00 to STA. 144+10.
See Details D-1 and D-3 (Sht. 22)


Transition new 4" curb to existing curb STA. 143+35 to STA. 143+45
LT & RT side of median and STA. 144+00 to STA. 144+10 LT side of median

Install new QuadGuard M10 TL-3 and connect to concrete barrier with
Single Slope Transition.

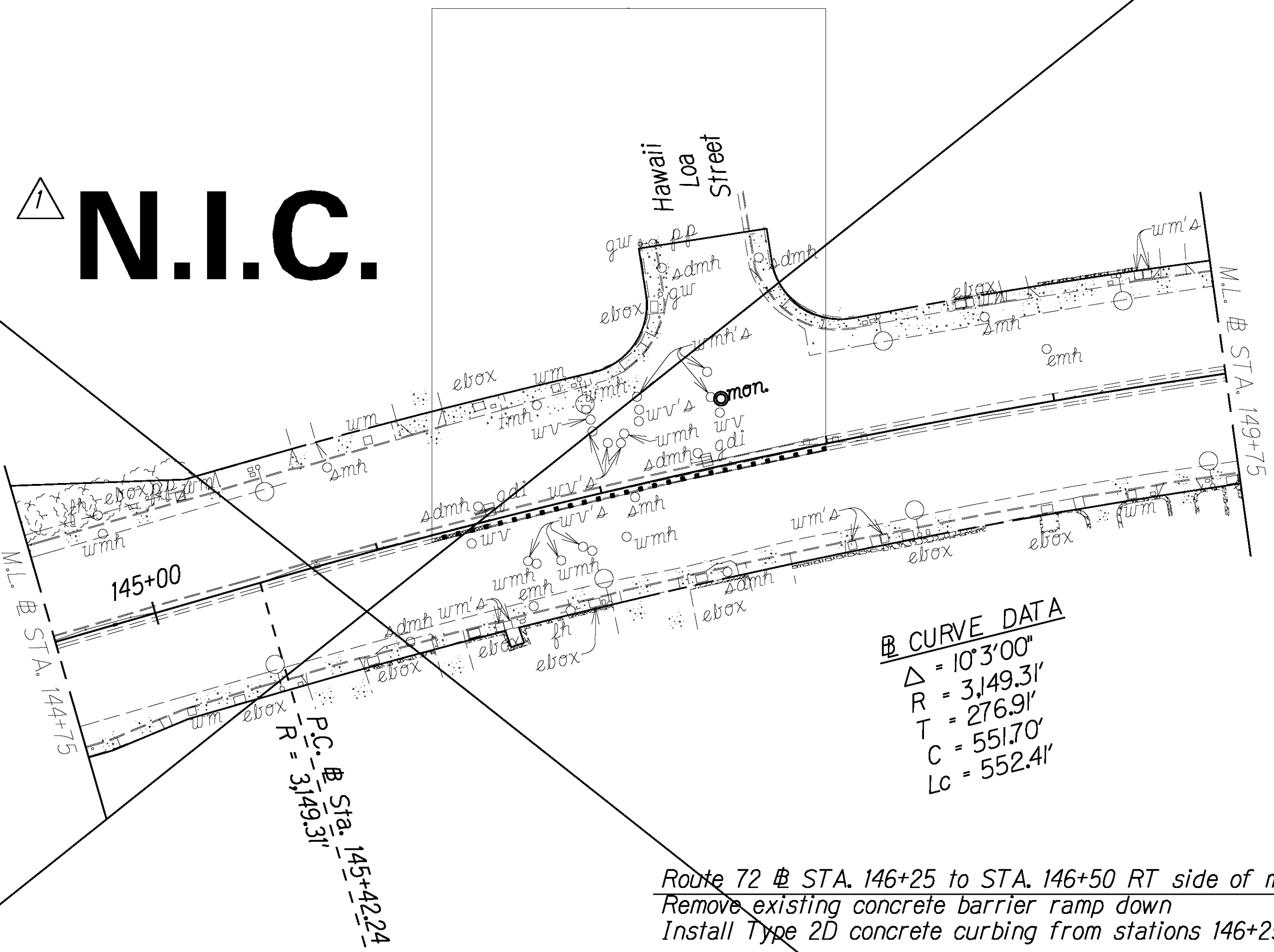
ORIGINAL PLAN	SURVEY PLOTTED BY	DATE
	DRAWN BY	
	TRACED BY	
	DESIGNED BY	
NOTE BOOK No.	CHECKED BY	

<div>1</div>	1/10/24	Delete sheet.
DATE	REVISION	
<div>STATE OF HAWAII</div> <div>DEPARTMENT OF TRANSPORTATION</div> <div>HIGHWAYS DIVISION</div> <div>ROADWAY PLAN</div> <div>SITE 3 ROUTE 72 KALANIANA'OLE HIGHWAY 1</div> <div>GUARDRAIL AND SHOULDER IMPROVEMENTS</div> <div>At Various Locations, Phase 3, Oahu</div> <div>Federal-Aid Project No. STP-0300(187)</div> <div>Scale: 1" = 40'</div> <div>Date: DECEMBER, 2023</div>		

FED. ROAD DIST. NO.	STATE	FED. AID PROJ. NO.	FISCAL YEAR	SHEET NO.	TOTAL SHEETS
HAWAII	HAW.	STP-0300(187)	2023	ADD. 11	27

 **N.I.C.**

Approx. Work Limits



Δ CURVE DATA
Δ = 10°3'00\"
R = 3,149.31'
T = 276.91'
C = 551.70'
Lc = 552.41'

Route 72 @ STA. 146+25 to STA. 146+50 RT side of median
Remove existing concrete barrier ramp down
Install Type 2D concrete curbing from stations 146+25 to 146+50

STA. 146+25 to STA. 148+00 RT side of median
Install 175 L.F. of new MGS guardrail
in existing median. Connect to existing concrete barrier at STA. 148+00.

ORIGINAL PLAN	SURVEY PLOTTED BY	DATE
NOTE BOOK	DRAWN BY	
	TRACED BY	
	DESIGNED BY	
	CHECKED BY	

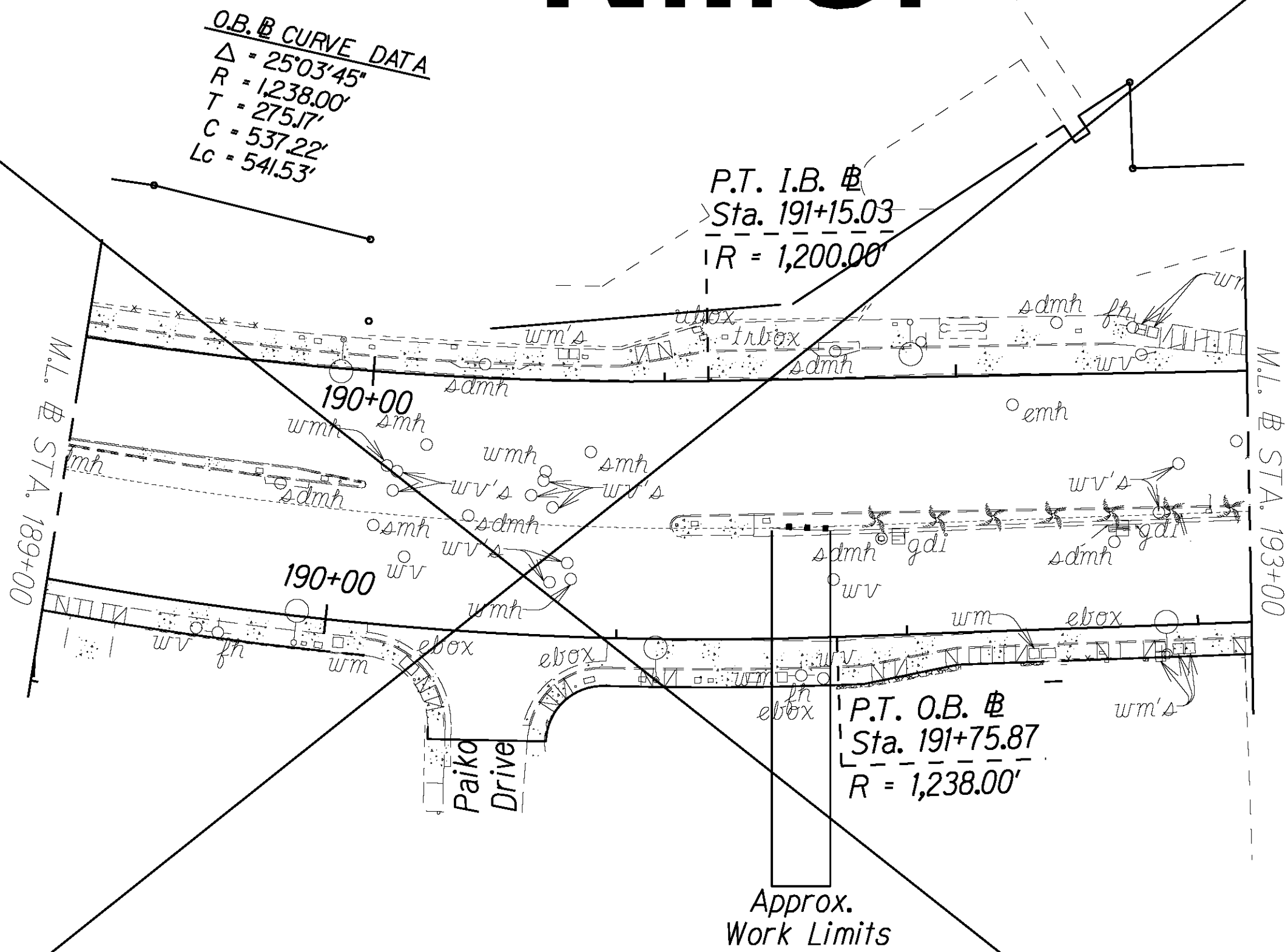
<div>1</div>	1/10/24	Delete sheet.
DATE	REVISION	
<div>STATE OF HAWAII DEPARTMENT OF TRANSPORTATION HIGHWAYS DIVISION <u>ROADWAY PLAN</u> <u>SITE 3 ROUTE 72 KALANIANA'OLE HIGHWAY 2</u> <u>GUARDRAIL AND SHOULDER IMPROVEMENTS</u> <u>At Various Locations, Phase 3, Oahu</u> <u>Federal-Aid Project No. STP-0300(187)</u> Scale: 1" = 40' Date: DECEMBER, 2023</div>		
SHEET No. 4 OF 14 SHEETS		

ADD. 11

FED. ROAD DIST. NO.	STATE	FED. AID PROJ. NO.	FISCAL YEAR	SHEET NO.	TOTAL SHEETS
HAWAII	HAW.	STP-0300(187)	2023	ADD. 14	27

 **N.I.C.**


TRUE NORTH
SCALE: 1" = 40'



Route 72 @ STA. 191+56
Remove and Dispose of exisiting sandbarrels

Install new MSKT or Approved Equal end treatment
and attach to existing concrete barrier

ORIGINAL PLAN	SURVEY PLOTTED BY	DATE
NOTE BOOK	DRAWN BY	
	TRACED BY	
	DESIGNED BY	
	CHECKED BY	

	1/10/24	Delete sheet.
DATE	REVISION	
STATE OF HAWAII DEPARTMENT OF TRANSPORTATION HIGHWAYS DIVISION		
<u>ROADWAY PLAN</u>		
<u>SITE 4 ROUTE 72 KALANIANA'OLE HIGHWAY 5</u> <u>GUARDRAIL AND SHOULDER IMPROVEMENTS</u> <u>At Various Locations, Phase 3, Oahu</u> <u>Federal-Aid Project No. STP-0300(187)</u>		
Scale: 1" = 40'		Date: DECEMBER, 2023

SHEET No. 7 OF 14 SHEETS

ADD. 14

FED. ROAD DIST. NO.	STATE	FED. AID PROJ. NO.	FISCAL YEAR	SHEET NO.	TOTAL SHEETS
HAWAII	HAW.	STP-0300(187)	2023	ADD. 15	27

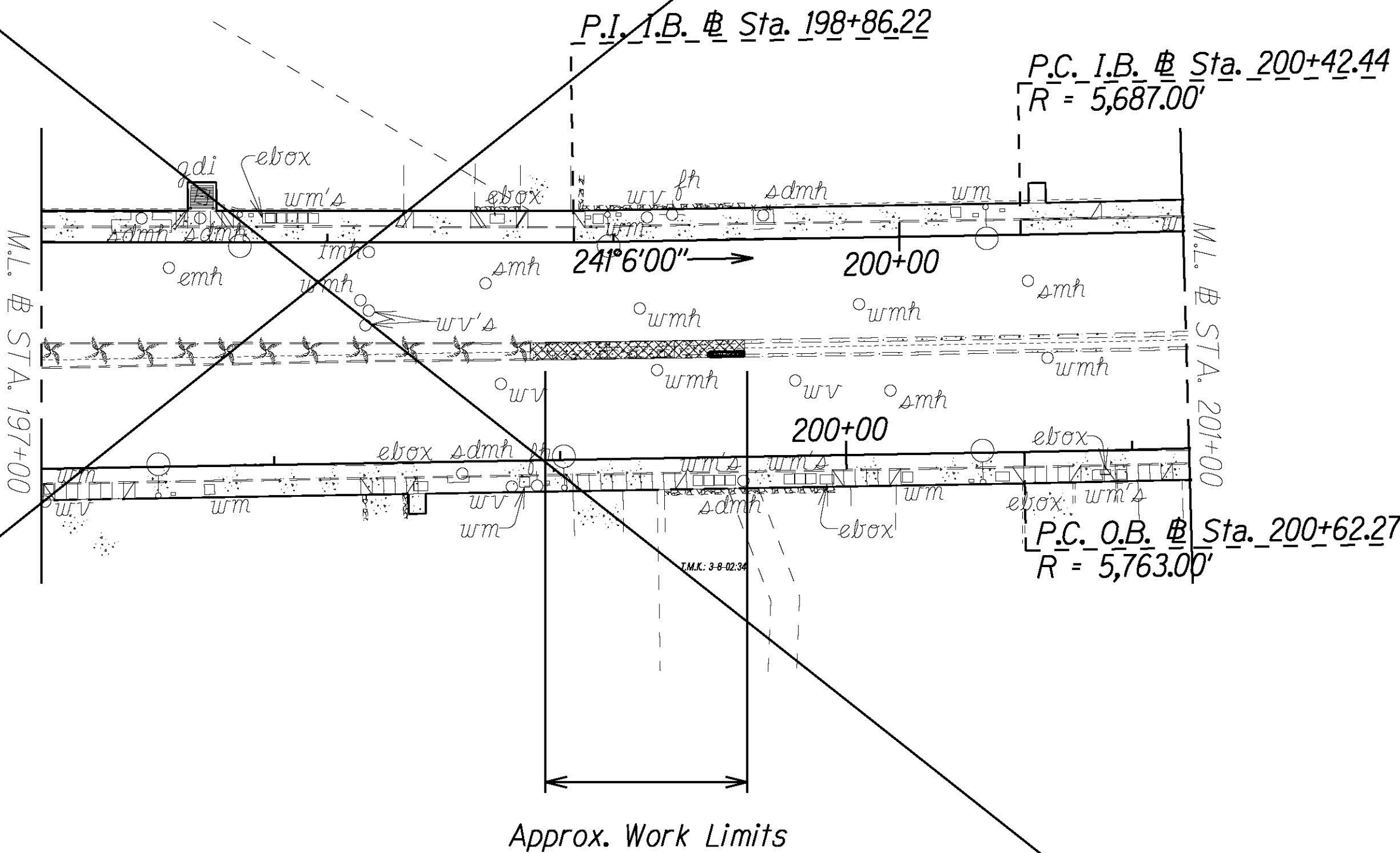


Approx. Work Limits



N.I.C.

TRUE NORTH
SCALE: 1" = 40'



Route 72 I.B. # STA. 198+71 to STA. 199+46
Remove existing concrete barrier ramp down, guardrail,
median, shrub, and curbing on both sides of median.

Route 72 I.B. # STA. 198+71 to STA. 199+46
Construct new 4" curb type 2G and 4" PCCP median
(layout will match existing). Transition to existing
median and curbing STA. 198+70 to STA. 198+80. See Details D-1 and D-3 (Sht 22)

Install QuadGuard M10 TL-3 and connect to concrete barrier
with single slope transition.



1/10/24 Delete sheet.

DATE REVISION

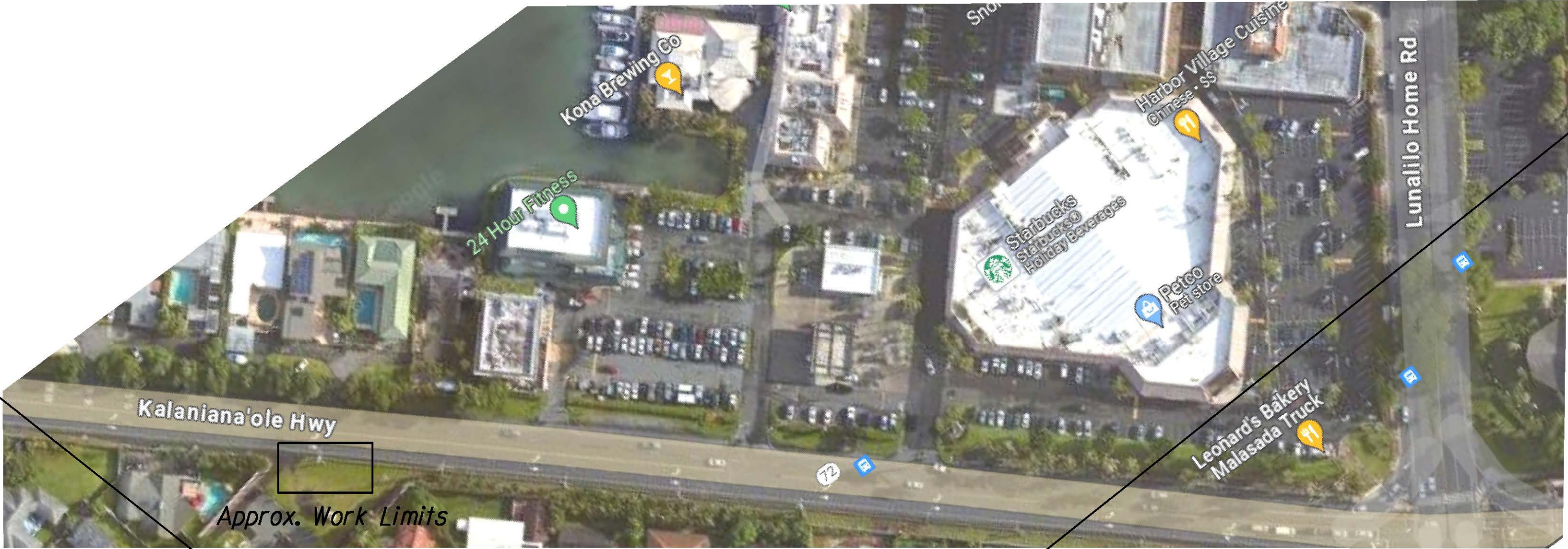
STATE OF HAWAII
DEPARTMENT OF TRANSPORTATION
HIGHWAYS DIVISION
ROADWAY PLAN
SITE 3 ROUTE 72 KALANIANA'OLE HIGHWAY 6
GUARDRAIL AND SHOULDER IMPROVEMENTS
At Various Locations, Phase 3, Oahu
Federal-Aid Project No. STP-0300(187)

Scale: 1" = 40' Date: DECEMBER, 2023

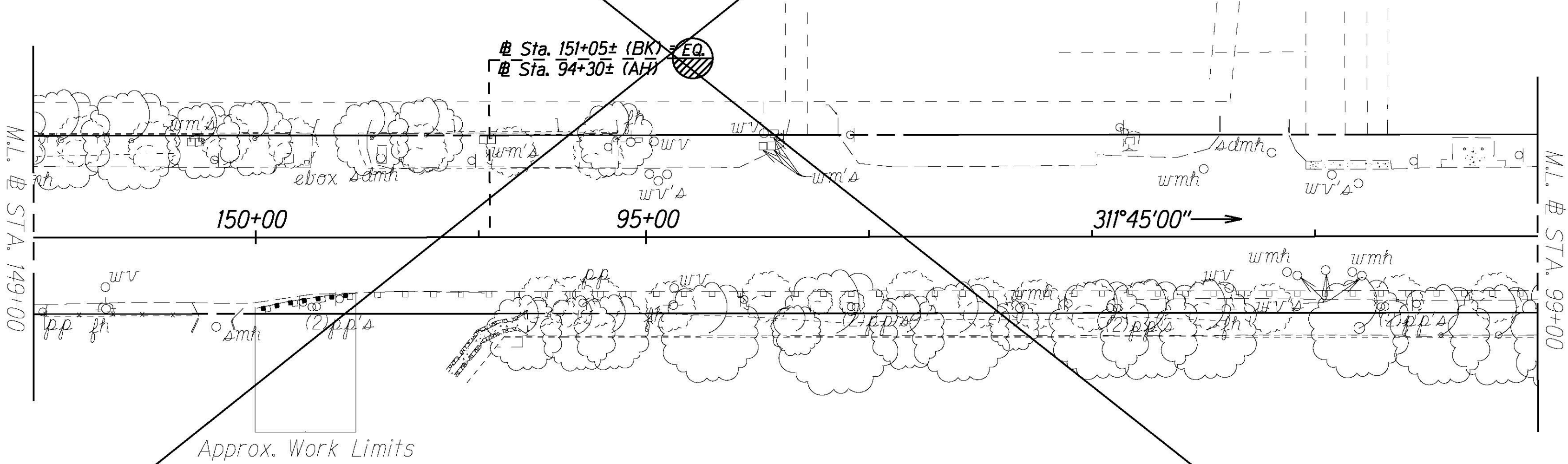
SHEET No. 8 OF 14 SHEETS

ADD. 15

FED. ROAD DIST. NO.	STATE	FED. AID PROJ. NO.	FISCAL YEAR	SHEET NO.	TOTAL SHEETS
HAWAII	HAW.	STP-0300(187)	2023	ADD. 18	27



1
N.I.C.

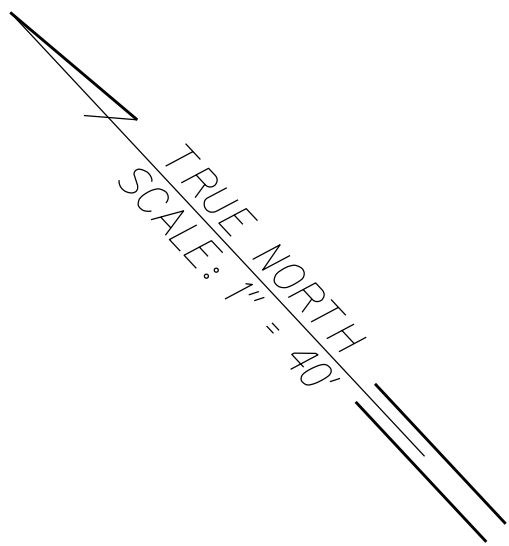


TRUE NORTH
SCALE: 1" = 40'

ORIGINAL PLAN	SURVEY PLOTTED BY	DATE
NOTE BOOK	DRAWN BY	
	DESIGNED BY	
	CHECKED BY	

<div>1</div>	1/10/24	Delete sheet.
DATE	REVISION	
<div>STATE OF HAWAII DEPARTMENT OF TRANSPORTATION HIGHWAYS DIVISION <u>ROADWAY PLAN</u> <u>SITE 3 ROUTE 72 KALANIANA'OLE HIGHWAY 9</u> <u>GUARDRAIL AND SHOULDER IMPROVEMENTS</u> <u>At Various Locations, Phase 3, Oahu</u> <u>Federal-Aid Project No. STP-0300(187)</u> Scale: 1" = 40' Date: DECEMBER, 2023</div>		

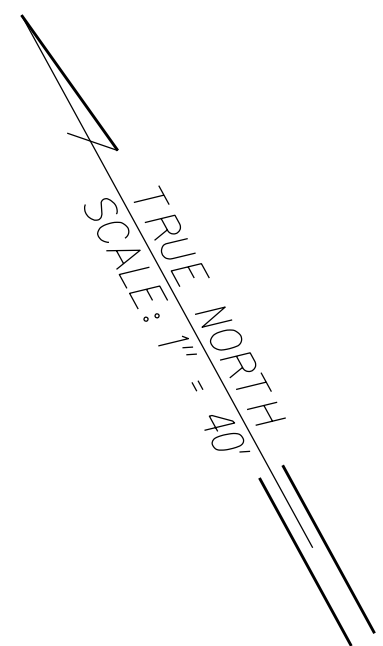
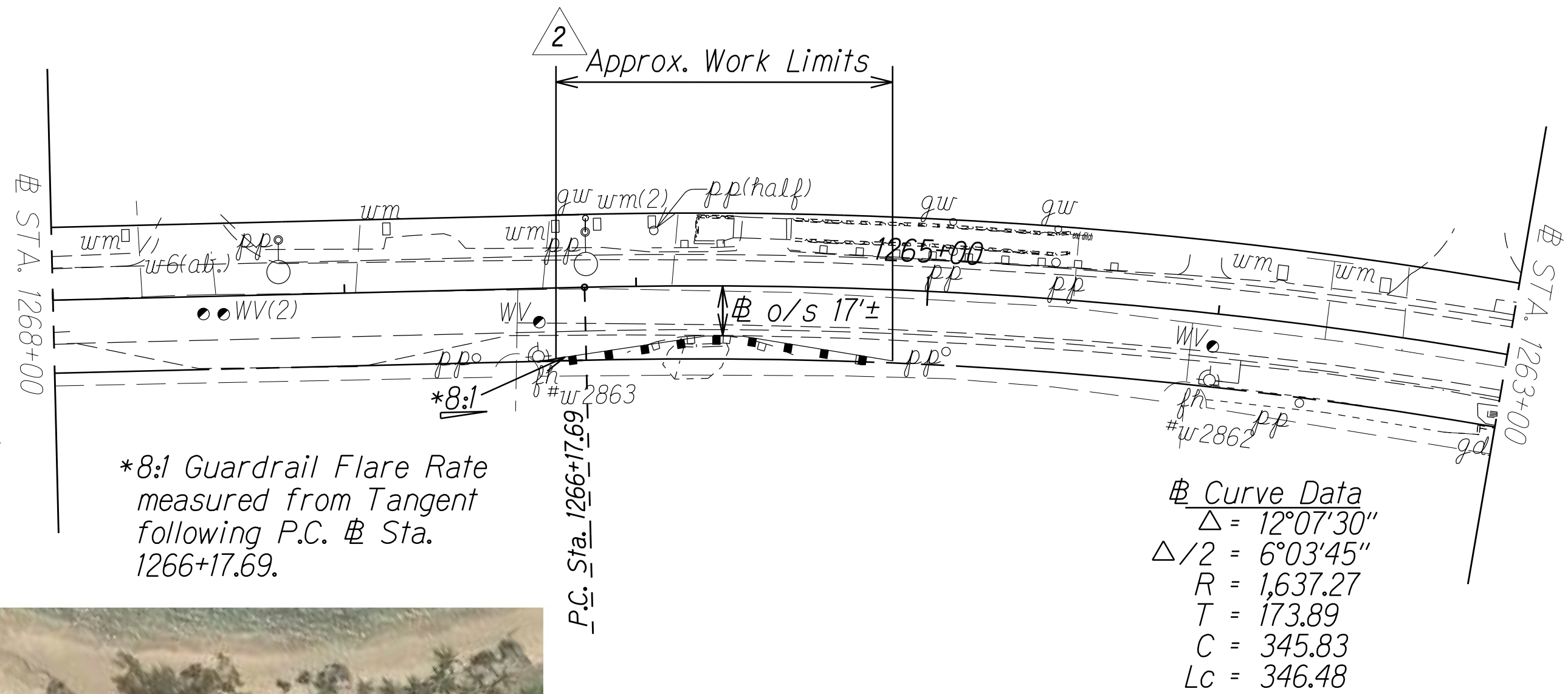
FED. ROAD DIST. NO.	STATE	FED. AID PROJ. NO.	FISCAL YEAR	SHEET NO.	TOTAL SHEETS
HAWAII	HAW.	STP-0300(187)	2023	ADD. 19	27



2

2

Route 83 @ Sta. 1266+28.1 o/s 24' Lt. to @ Sta. 1265+11.1 o/s 24' Lt.
Remove existing guardrail
Install 37.5 L.F. MGS guardrail from @ Sta. 1265+88.4 o/s 19± Lt. to @ Sta. 1265+50.8 o/s 19± Lt.
Install MASH FLEAT Terminal TL-3 Standard Post System at approach and trailing end. See sheet ADD. 23S-4 for details.

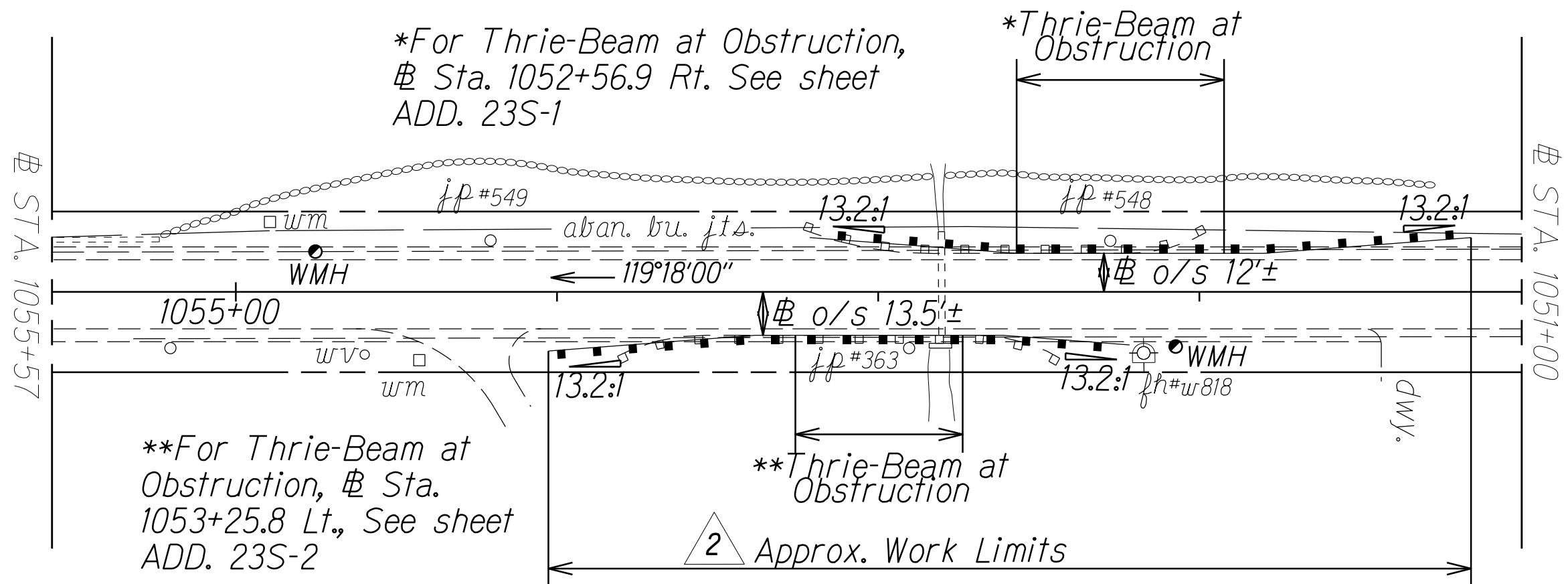


2

Route 83 @ STA. 1053+21.3 o/s 17± Rt. to STA. 1051+15.8 o/s 17± Rt.
Remove existing guardrail
Install 50 L.F. Thrie-Beam and Transition Sections at obstruction from @ Sta. 1052+56.9 o.s. 12± Rt. to @ Sta. 1051+92.7 o.s. 12± Rt.
Install 37.5 L.F. MGS guardrail from @ Sta. 1051+92.7 o.s. 12± Rt. to @ Sta. 1051+55.3 o.s. 12± Rt.
Install MASH FLEAT Terminal TL-3 Standard Post System at approach and trailing end. See sheet ADD. 23S-4 for details.

2

Route 83 @ STA. 1054+02.7 o/s 18± Lt. to STA. 1052+21.7 o/s 18± Lt.
Remove existing guardrail
Install 37.5 L.F. Thrie-Beam and Transition Sections at obstruction from @ Sta. 1053+25.8 o.s. 13.5± Lt. to @ Sta. 1052+73.7 o.s. 13.5± Lt.
Install 37.5 L.F. MGS guardrail from @ Sta. 1053+63.2 o.s. 13.5± Lt. to @ Sta. 1053+25.8 o.s. 13.5± Lt. and 12.5 L.F. from @ Sta. 1052+73.7 o.s. 13.5± Lt. to @ Sta. 1052+61.2 o.s. 13.5± Lt.
Install MASH FLEAT Terminal TL-3 Standard Post System at approach and trailing end. See sheet ADD. 23S-4 for details.



2

1

1/25/2024
Removed note and work for Route 83 @ Sta. 1265+40 to @ Sta. 1264+20
Revised Work at remaining locations on this sheet
1/10/2024
Updated note Route 83 @ Sta. 1265+40 to @ Sta. 1264+20
Update note Route 83 @ Sta. 1266+05 to @ Sta. 1265+80
Updated notes Route 83 @ Sta. 1053+25 to @ Sta. 1052+00 and Route 83 @ Sta. 1053+83 to @ Sta. 1052+44

DATE REVISION

STATE OF HAWAII
DEPARTMENT OF TRANSPORTATION
HIGHWAYS DIVISION
ROADWAY PLAN
SITE 4 ROUTE 83 KAMEHAMEHA HIGHWAY 1
GUARDRAIL AND SHOULDER IMPROVEMENTS
At Various Locations, Phase 3, Oahu
Federal-Aid Project No. STP-0300(187)
Scale: 1" = 40' Date: DECEMBER, 2023

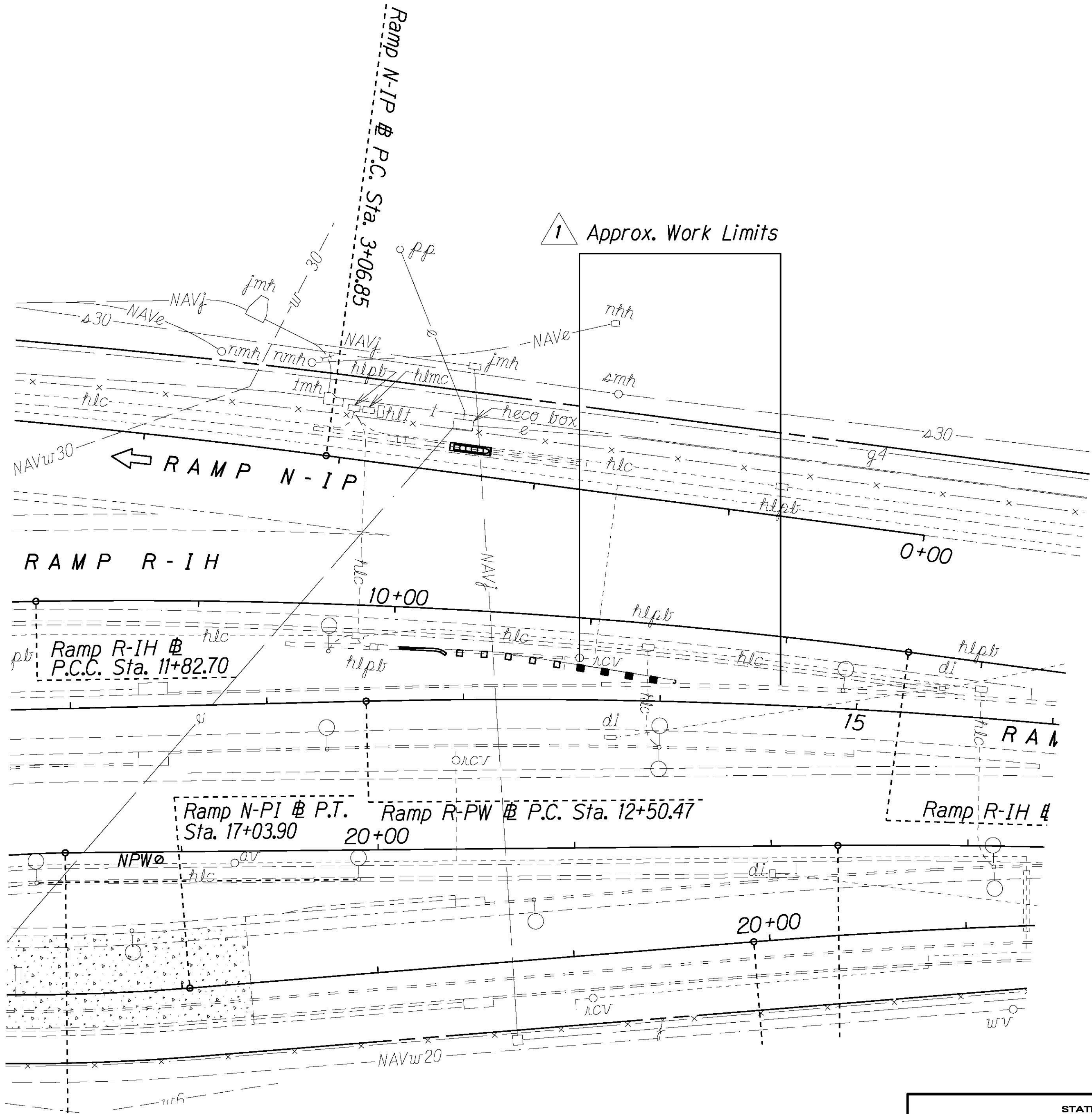
SHEET No. 12 OF 14 SHEETS

FED. ROAD DIST. NO.	STATE	FED. AID PROJ. NO.	FISCAL YEAR	SHEET NO.	TOTAL SHEETS
HAWAII	HAW.	STP-0300(187)	2023	ADD. 21	27



- 1 Ramp N-IP @ STA. 1+16
Remove existing end treatment.
Replace with new MSKT TL-3 end treatment
using MGS transition to strong post guardrail.

Remove any obstructions within 50 L.F. of face of guardrail end treatment.



ORIGINAL PLAN	SURVEY PLOTTED BY	DATE
NOTE BOOK	DRAWN BY	
	DESIGNED BY	
	CHECKED BY	

1	1/10/2024	Replace MSKT or approved equal with MSKT TL-3 in note Ramp N-IP @ STA. 1+16
DATE	REVISION	

STATE OF HAWAII DEPARTMENT OF TRANSPORTATION HIGHWAYS DIVISION ROADWAY PLAN SITE 5 ROUTE 92 NIMITZ HIGHWAY 1 GUARDRAIL AND SHOULDER IMPROVEMENTS At Various Locations, Phase 3, Oahu Federal-Aid Project No. STP-0300(187) Scale: 1" = 40' Date: DECEMBER, 2023
SHEET No. 14 OF 14 SHEETS