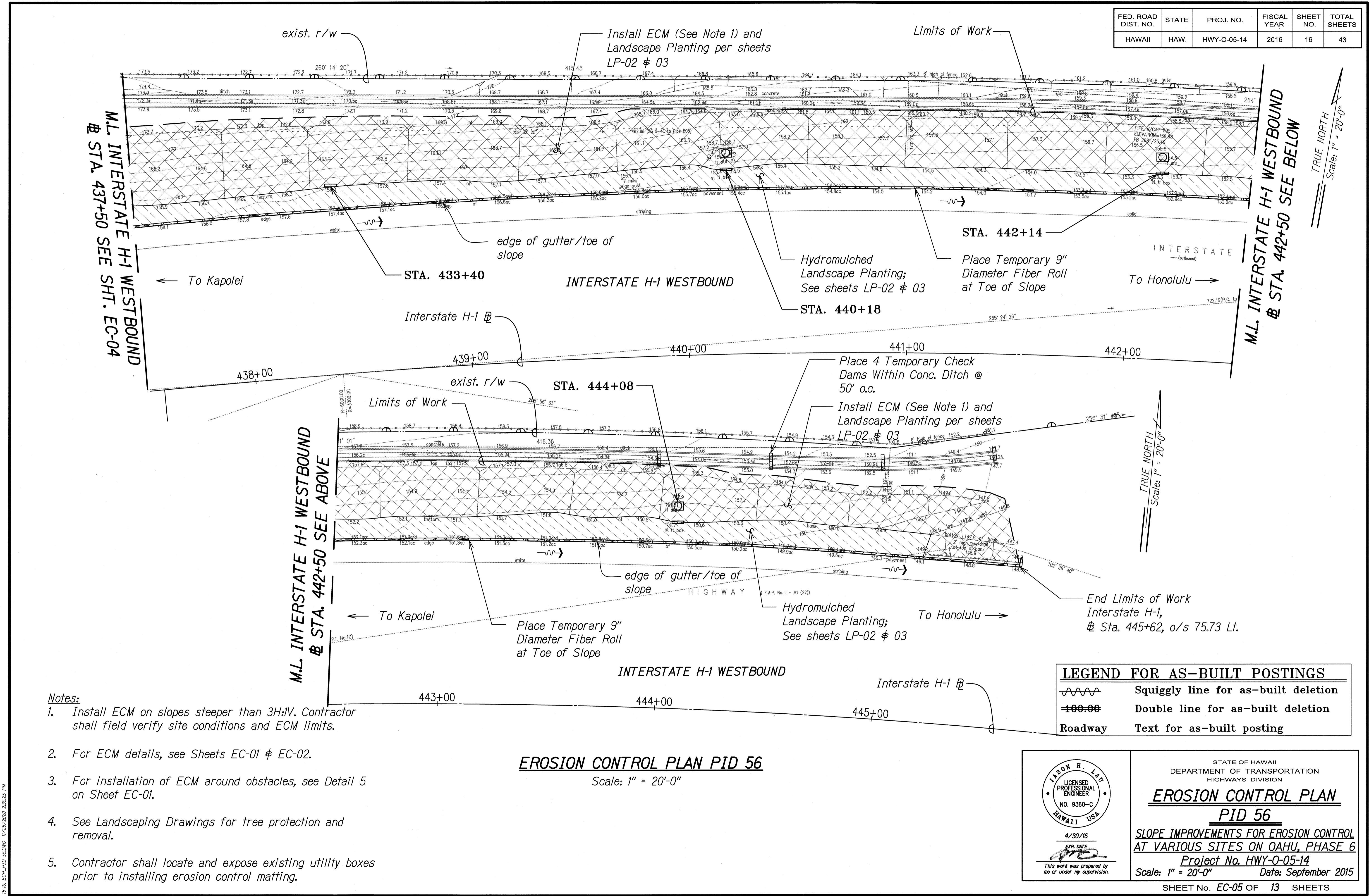


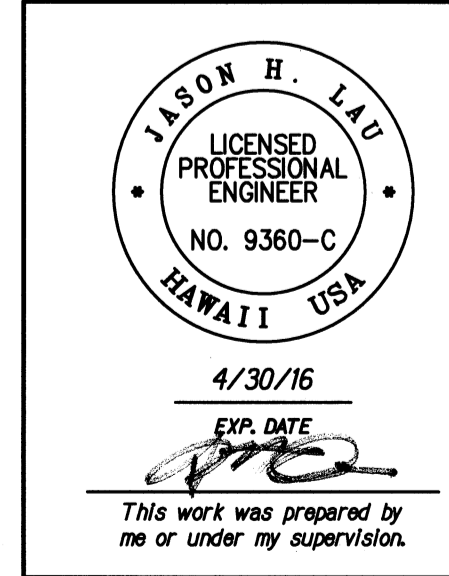
FED. ROAD DIST. NO.	STATE	PROJ. NO.	FISCAL YEAR	SHEET NO.	TOTAL SHEETS
HAWAII	HAW.	HWY-O-05-14	2016	16	43



- Notes:**
1. Install ECM on slopes steeper than 3H:1V. Contractor shall field verify site conditions and ECM limits.
 2. For ECM details, see Sheets EC-01 & EC-02.
 3. For installation of ECM around obstacles, see Detail 5 on Sheet EC-01.
 4. See Landscaping Drawings for tree protection and removal.
 5. Contractor shall locate and expose existing utility boxes prior to installing erosion control matting.

EROSION CONTROL PLAN PID 56
Scale: 1" = 20'-0"

LEGEND FOR AS-BUILT POSTINGS	
	Squiggly line for as-built deletion
	Double line for as-built deletion
	Roadway Text for as-built posting



STATE OF HAWAII
DEPARTMENT OF TRANSPORTATION
HIGHWAYS DIVISION

EROSION CONTROL PLAN
PID 56

SLOPE IMPROVEMENTS FOR EROSION CONTROL
AT VARIOUS SITES ON OAHU, PHASE 6

Project No. HWY-O-05-14
Scale: 1" = 20'-0" Date: September 2015

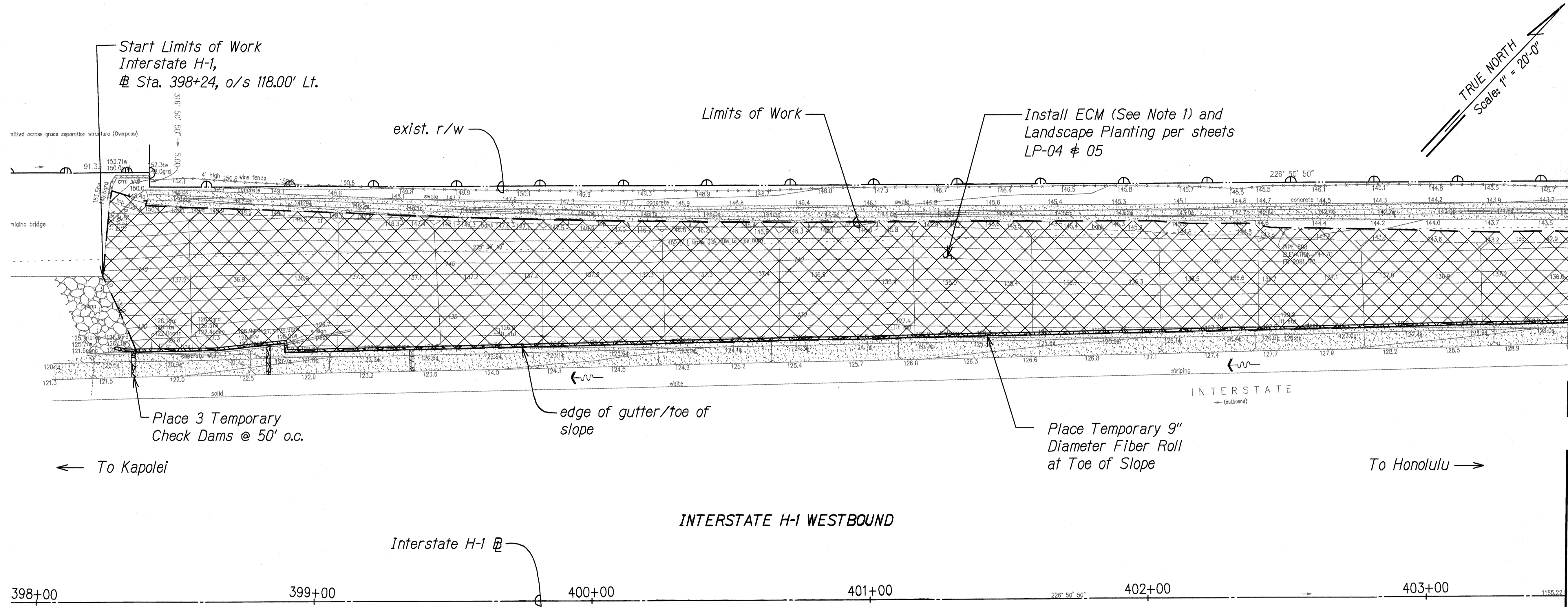
SHEET No. EC-05 OF 13 SHEETS

"AS-BUILT"

SURVEY PLOTTED BY	DATE
DRAWN BY	
DESIGNED BY	
CHECKED BY	
NO. 9360-C	

P16, ECP, PID 56, HWY-O-05-14, 11/25/2015, 2:06:25 PM

FED. ROAD DIST. NO.	STATE	PROJ. NO.	FISCAL YEAR	SHEET NO.	TOTAL SHEETS
HAWAII	HAW.	HWY-O-05-14	2016	17	43



M.L. INTERSTATE H-1 WESTBOUND
@ STA. 403+50 SEE SHT. EC-07

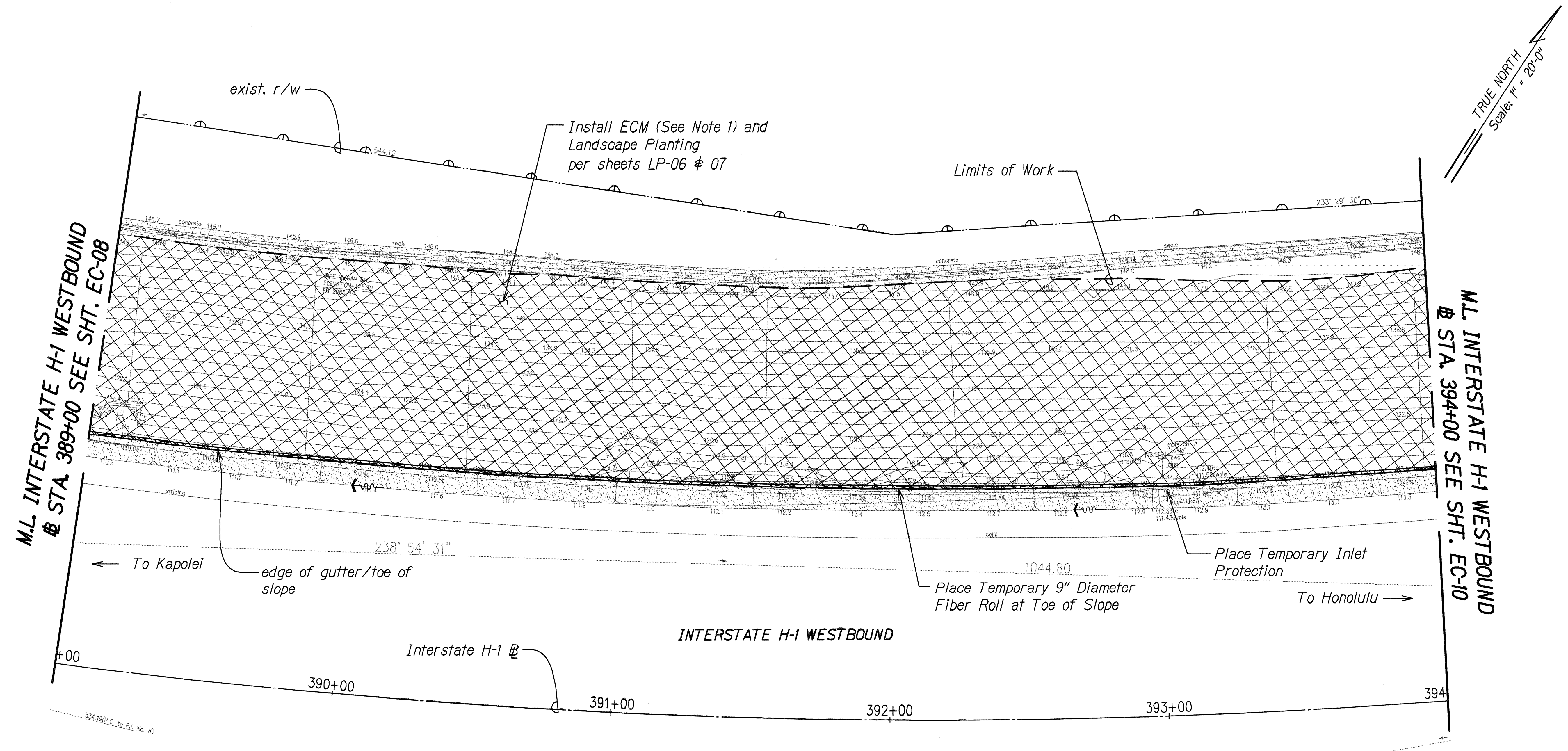
EROSION CONTROL PLAN PID 47
 Scale: 1" = 20'-0"

- Notes:**
1. Install ECM on slopes steeper than 3H:1V. Contractor shall field verify site conditions and ECM limits.
 2. For ECM details, see Sheets EC-01 & EC-02.
 3. For installation of ECM around obstacles, see Detail 5 on Sheet EC-01.
 4. See Landscaping Drawings for tree protection and removal.
 5. Contractor shall locate and expose existing utility boxes prior to installing erosion control matting.

DATE	_____
DESIGNED BY	_____
CHECKED BY	_____
DATE	_____
DRAWN BY	_____
PLACED BY	_____
DATE	_____
DESIGNED BY	_____
CHECKED BY	_____
DATE	_____
DRAWN BY	_____
PLACED BY	_____

	STATE OF HAWAII DEPARTMENT OF TRANSPORTATION HIGHWAYS DIVISION <u>EROSION CONTROL PLAN</u> <u>PID 47</u> SLOPE IMPROVEMENTS FOR EROSION CONTROL AT VARIOUS SITES ON OAHU, PHASE 6 Project No. HWY-O-05-14 Scale: 1" = 20'-0" Date: September 2015
This work was prepared by me or under my supervision.	SHEET No. EC-06 OF 13 SHEETS

FED. ROAD DIST. NO.	STATE	PROJ. NO.	FISCAL YEAR	SHEET NO.	TOTAL SHEETS
HAWAII	HAW.	HWY-0-05-14	2016	20	43



Notes:

1. Install ECM on slopes steeper than 3H:1V. Contractor shall field verify site conditions and ECM limits.
2. For ECM details, see Sheets EC-01 & EC-02.
3. For installation of ECM around obstacles, see Detail 5 on Sheet EC-01.
4. See Landscaping Drawings for tree protection and removal.
5. Contractor shall locate and expose existing utility boxes prior to installing erosion control matting.

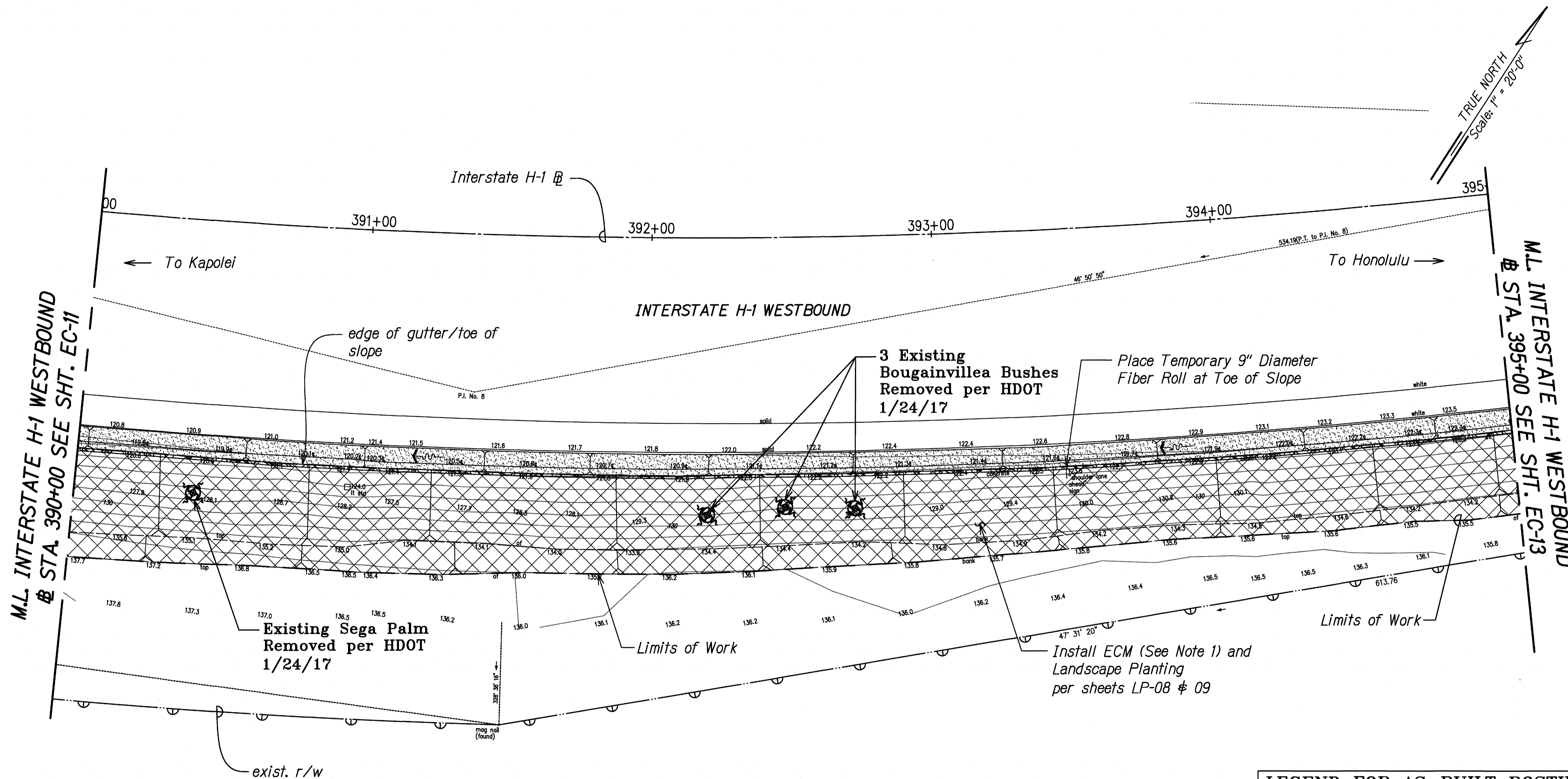
EROSION CONTROL PLAN PID 48
 Scale: 1" = 20'-0"

DESIGNED BY	DATE
CHECKED BY	
DRAWN BY	
PLOTTED BY	
NOTE BOOK	
NO.	

ECP-PID 48.DWG 7/22/2015 4:00PM PM

	STATE OF HAWAII DEPARTMENT OF TRANSPORTATION HIGHWAYS DIVISION
	<u>EROSION CONTROL PLAN</u> <u>PID 48</u>
	SLOPE IMPROVEMENTS FOR EROSION CONTROL AT VARIOUS SITES ON OAHU, PHASE 6 Project No. HWY-0-05-14
	Scale: 1" = 20'-0" Date: September 2015

FED. ROAD DIST. NO.	STATE	PROJ. NO.	FISCAL YEAR	SHEET NO.	TOTAL SHEETS
HAWAII	HAW.	HWY-O-05-14	2016	23	43



Notes:

1. Install ECM on slopes steeper than 3H:1V. Contractor shall field verify site conditions and ECM limits.
2. For ECM details, see Sheets EC-01 & EC-02.
3. For installation of ECM around obstacles, see Detail 5 on Sheet EC-01.
4. See Landscaping Drawings for tree protection and removal.
5. Contractor shall locate and expose existing utility boxes prior to installing erosion control matting.

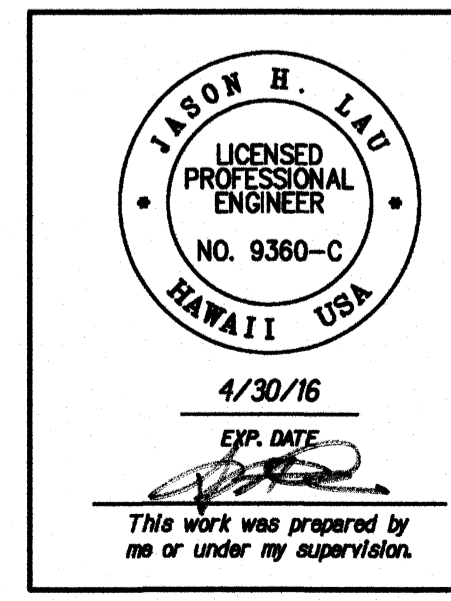
EROSION CONTROL PLAN PID 109

Scale: 1" = 20'-0"

LEGEND FOR AS-BUILT POSTINGS

- Squiggly line for as-built deletion
- Double line for as-built deletion
- Roadway Text for as-built posting

DESIGNED BY	DATE
DRAWN BY	
CHECKED BY	
APPROVED BY	
DATE	



STATE OF HAWAII
DEPARTMENT OF TRANSPORTATION
HIGHWAYS DIVISION

**EROSION CONTROL PLAN
PID 109**

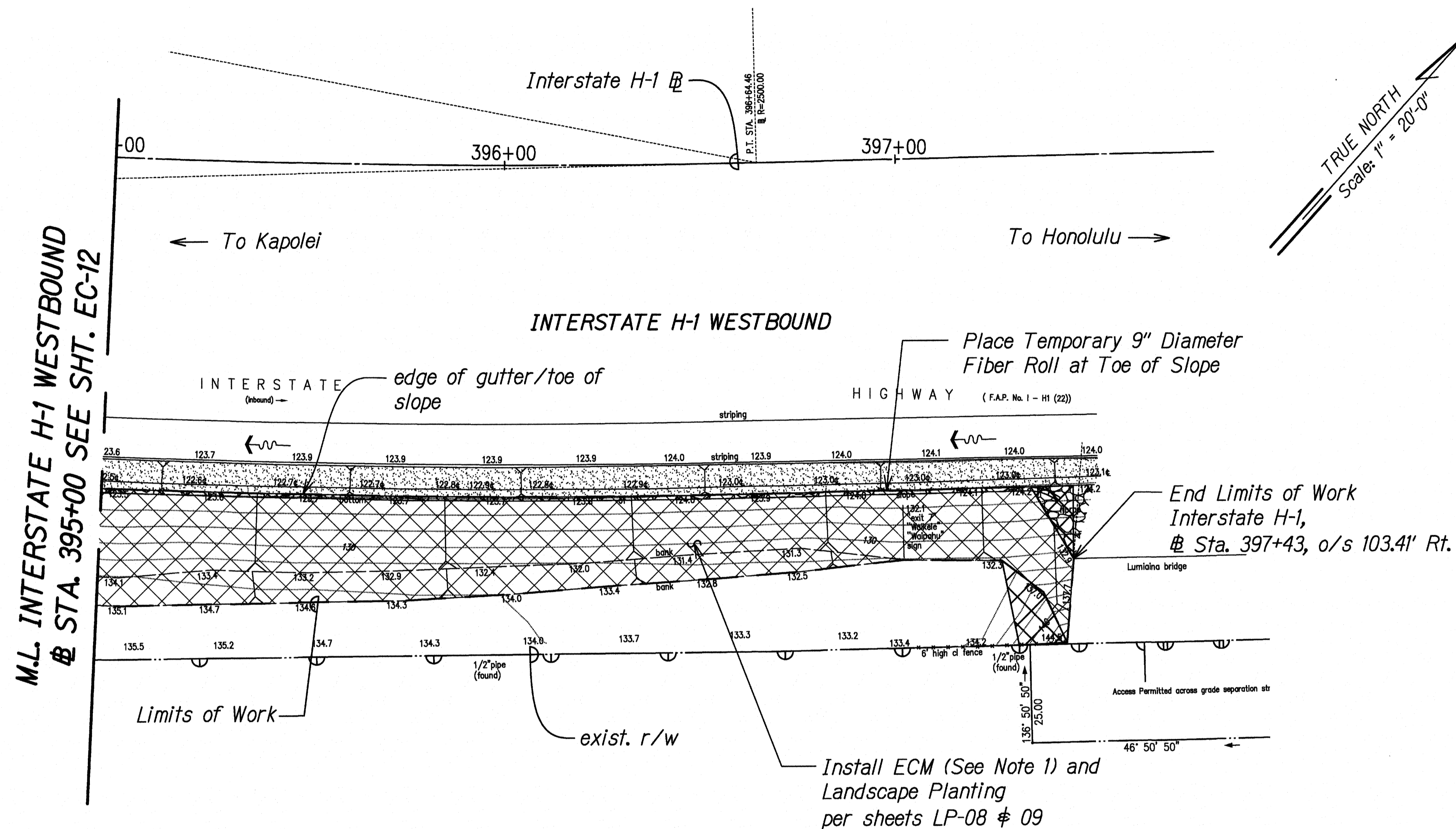
SLOPE IMPROVEMENTS FOR EROSION CONTROL
AT VARIOUS SITES ON OAHU, PHASE 6

Project No. HWY-O-05-14
Scale: 1" = 20'-0" Date: September 2015

SHEET No. EC-12 OF 13 SHEETS

"AS-BUILT"

FED. ROAD DIST. NO.	STATE	PROJ. NO.	FISCAL YEAR	SHEET NO.	TOTAL SHEETS
HAWAII	HAW.	HWY-O-05-14	2016	24	43



EROSION CONTROL PLAN PID 109

Scale: 1" = 20'-0"

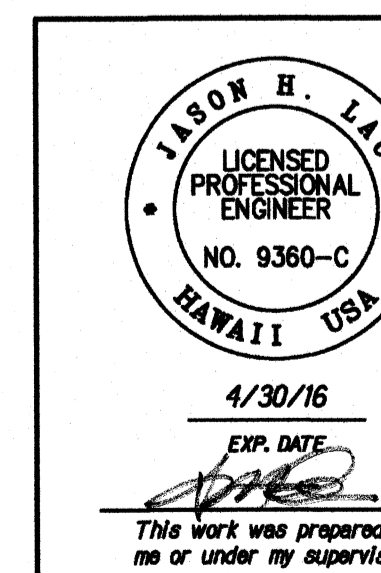
Notes:

1. Install ECM on slopes steeper than 3H:1V. Contractor shall field verify site conditions and ECM limits.
2. For ECM details, see Sheets EC-01 & EC-02.
3. For installation of ECM around obstacles, see Detail 5 on Sheet EC-01.
4. See Landscaping Drawings for tree protection and removal.
5. Contractor shall locate and expose existing utility boxes prior to installing erosion control matting.

Biosocks - 65 Pcs - 1,300 Ft.
18" Stake - 27 Bundles, 5 Ft. Spacing, 2 Per Side

LEGEND FOR AS-BUILT POSTINGS

	Squiggly line for as-built deletion
	Double line for as-built deletion
	Text for as-built posting



STATE OF HAWAII
DEPARTMENT OF TRANSPORTATION
HIGHWAYS DIVISION
EROSION CONTROL PLAN
PID 109
SLOPE IMPROVEMENTS FOR EROSION CONTROL
AT VARIOUS SITES ON OAHU, PHASE 6
Project No. HWY-O-05-14
Scale: 1" = 20'-0" Date: September 2015

SHEET No. EC-13 OF 13 SHEETS

"AS-BUILT"

DATE	_____
ORIGINAL PLANNED BY	_____
TRACED BY	_____
DESIGNED BY	_____
NOTE BOOK	_____
QUANTITIES BY	_____
FORWARDED BY	_____
No.	_____

22-2A, ECP PID 109, DRAWING 7/15/2016 5:06:40 PM