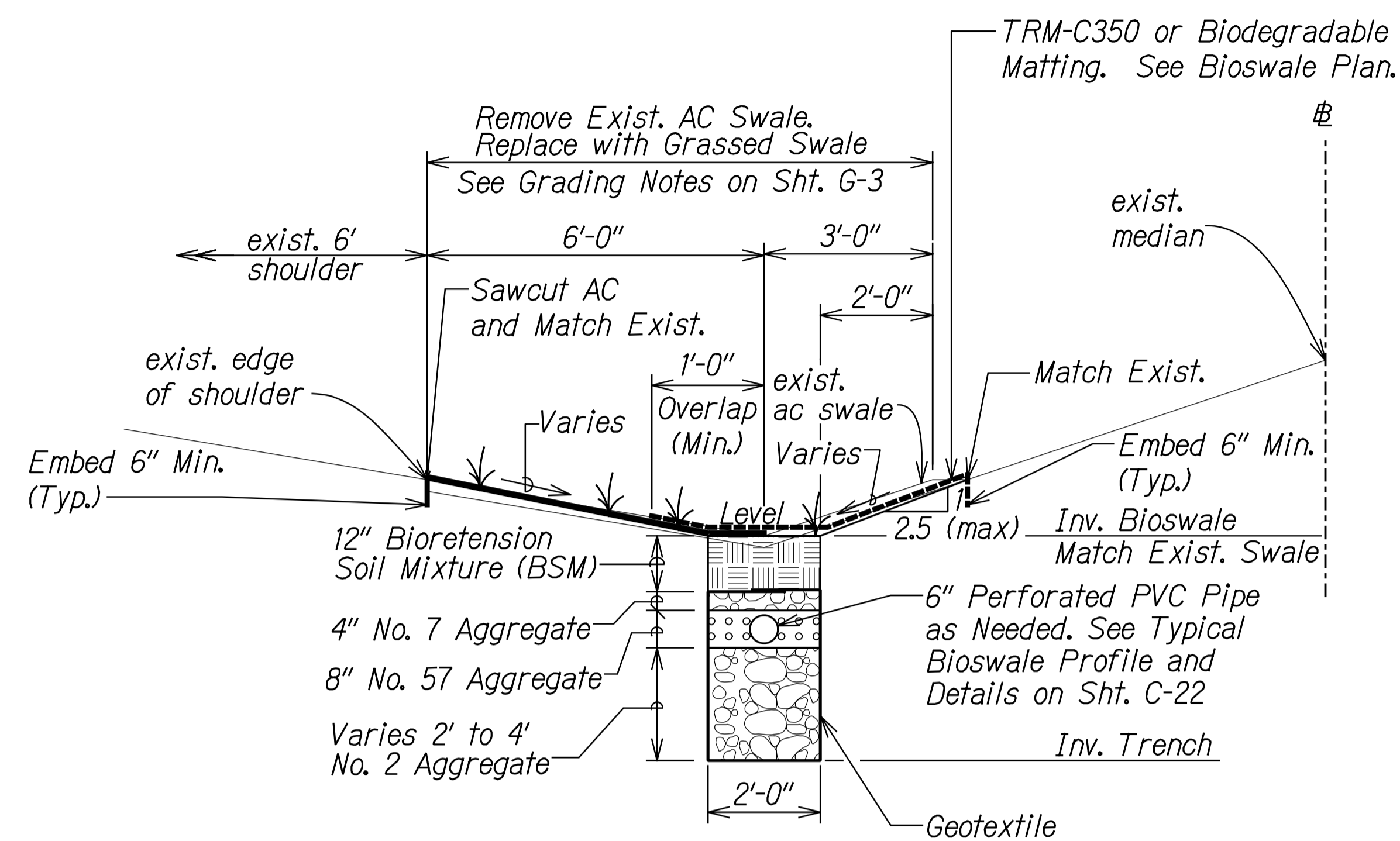


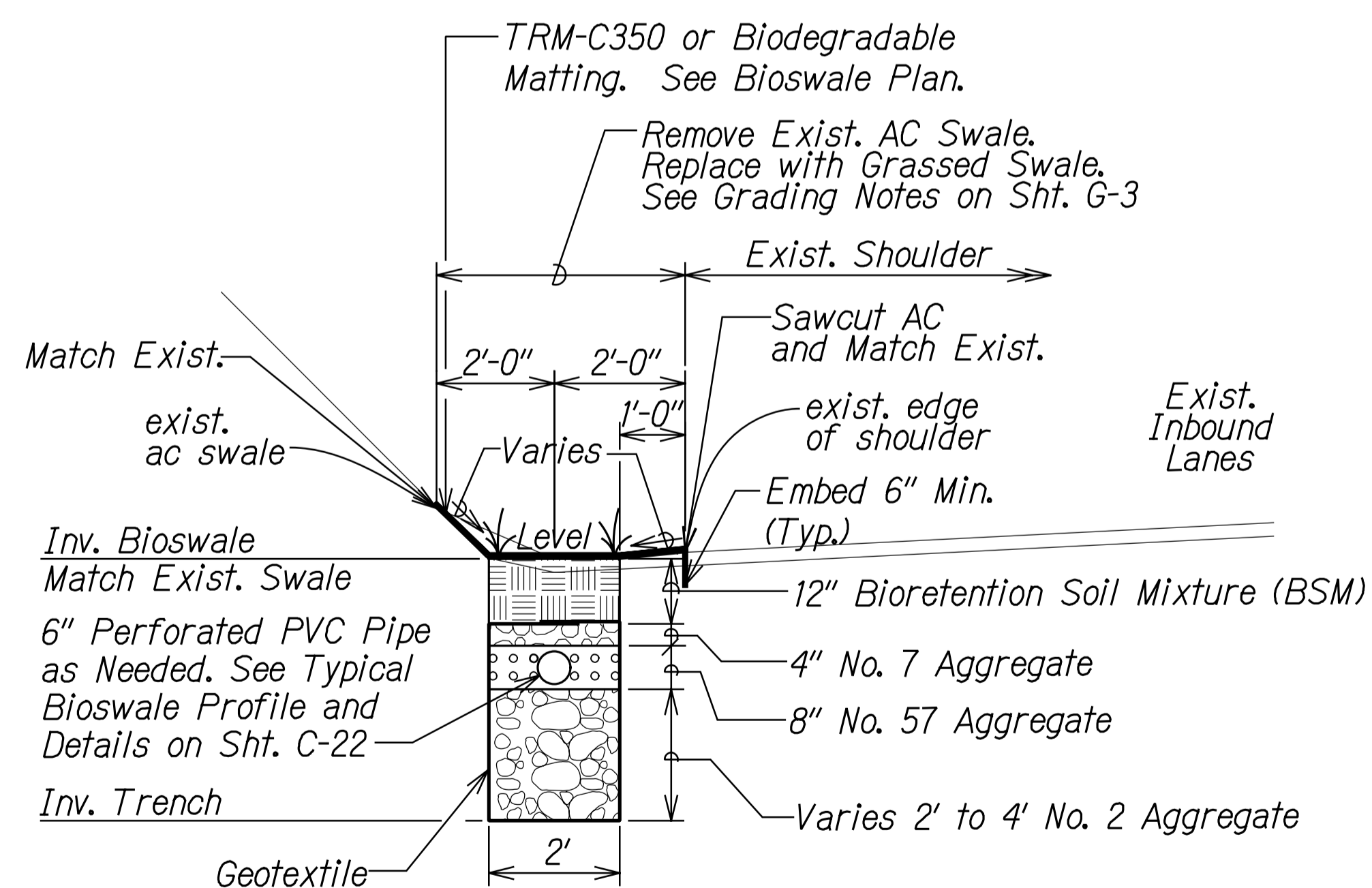
FED. ROAD DIST. NO.	STATE	PROJ. NO.	FISCAL YEAR	SHEET NO.	TOTAL SHEETS
HAWAII	HAW.	HWY-0-02-11R	2014	C.O. 15	43



NOTE: Use staple pattern B

TYPICAL SECTION BIOSWALES A, B, C, F, I

Scale: 1/2" = 1'-0"



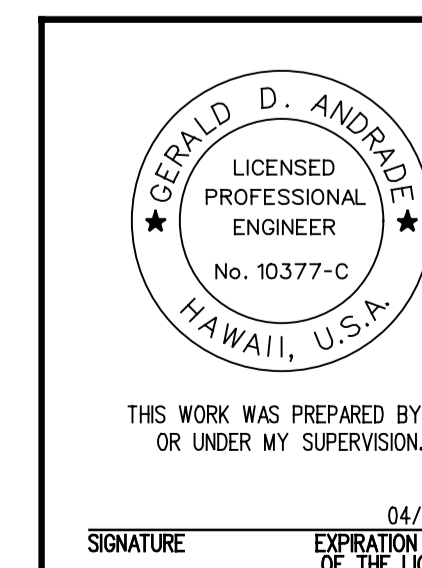
NOTE: For Bioswale Q use staple pattern D due to inability to embed at toe of slope.

TYPICAL SECTION BIOSWALE Q

Scale: 1/2" = 1'-0"

DATE	_____
SURVEY PLOTTED BY	_____
DRAWN BY	_____
DESIGNED BY	_____
CHECKED BY	_____
NOTE BOOK	_____
No.	_____

T:\16523A-Permanent BMP\Cadd\Sheets\section\T5-01.dgn



10/21/16	△ Revised Sheet
Date	Revision

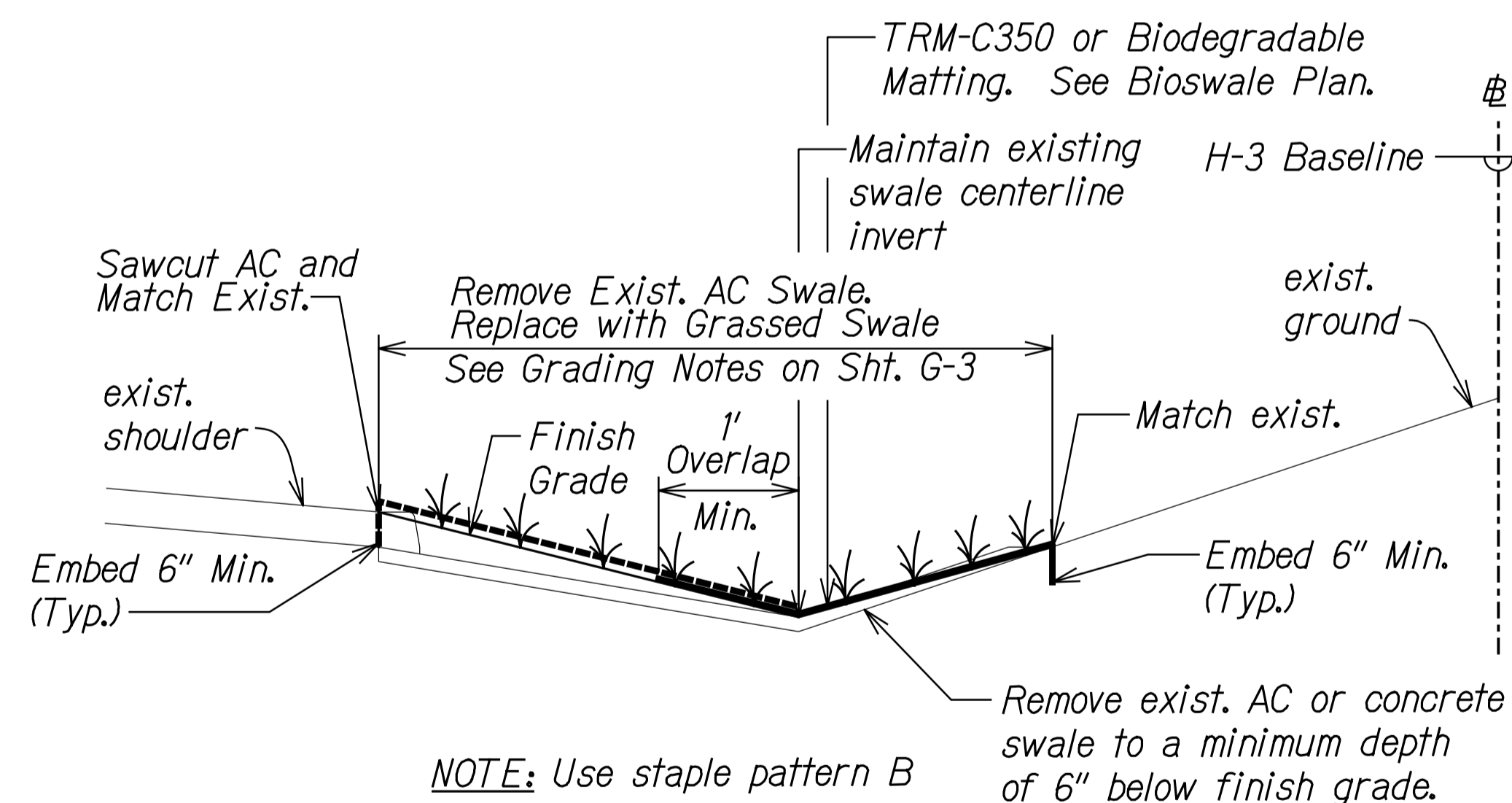
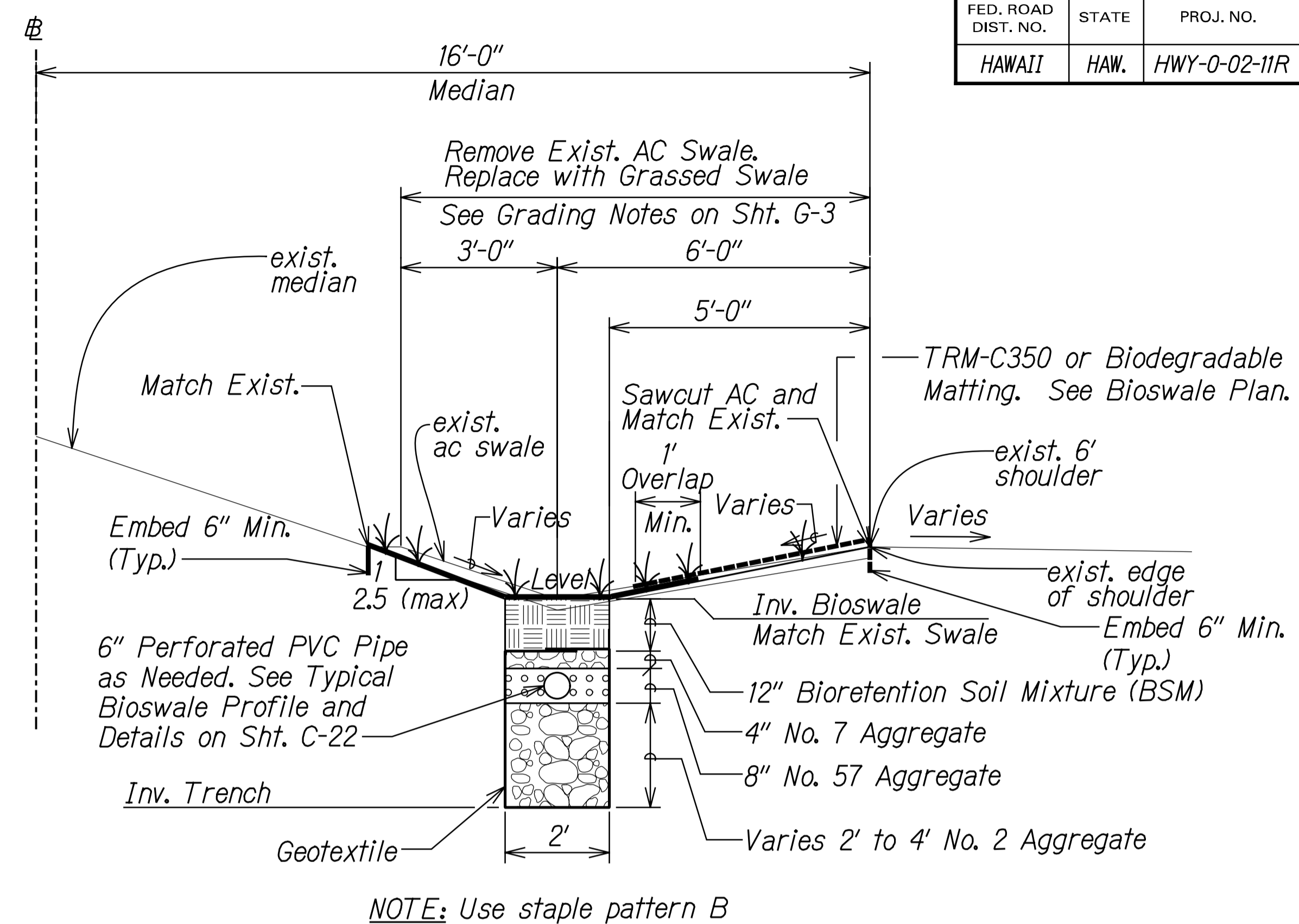
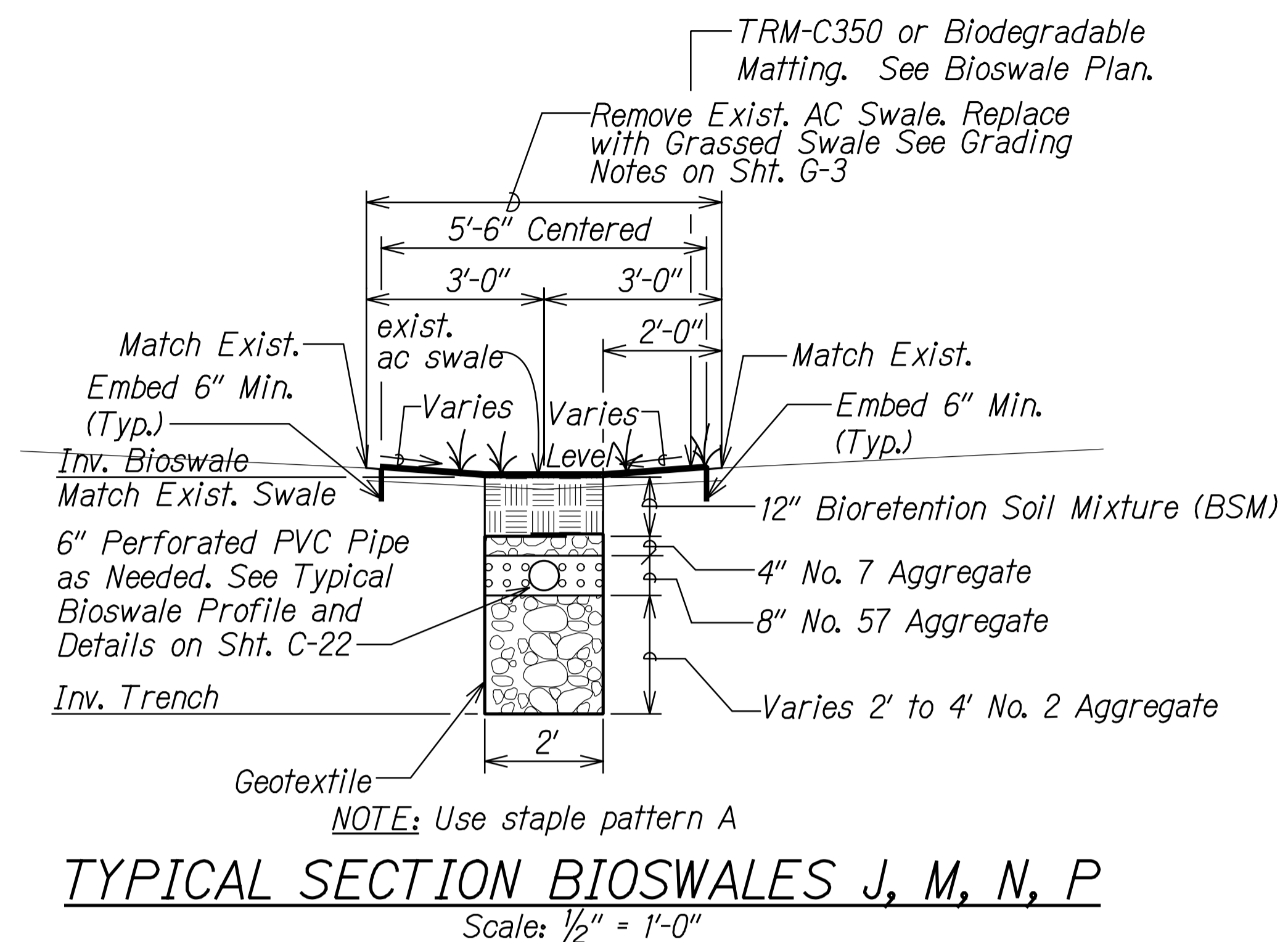
STATE OF HAWAII
DEPARTMENT OF TRANSPORTATION
HIGHWAYS DIVISION

BIOSWALE
TYPICAL SECTION-1
MISCELLANEOUS PERMANENT BEST
MANAGEMENT PRACTICES ON OAHU
PROJECT NO. HWY-0-02-11R

Scale: 1/2"=1'-0" Date: April, 2014

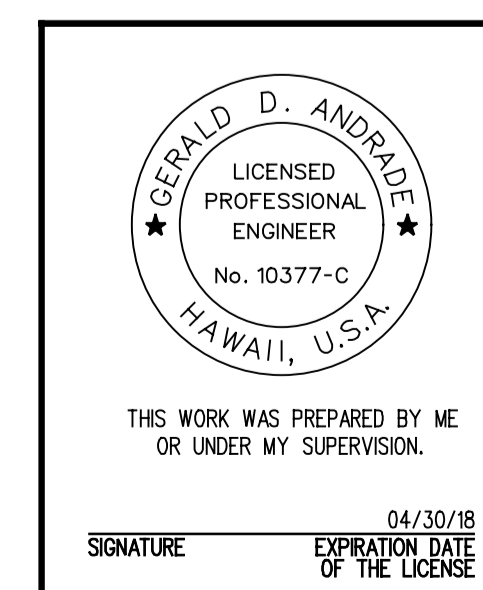
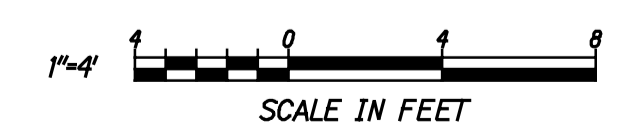
SHEET No. C-3 OF 23 SHEETS

FED. ROAD DIST. NO.	STATE	PROJ. NO.	FISCAL YEAR	SHEET NO.	TOTAL SHEETS
HAWAII	HAW.	HWY-0-02-11R	2014	C.O. 16	43



ORIGINAL PLAN	DATE
DRAWN BY	
TRACED BY	
DESIGNED BY	
CHECKED BY	
NOTED BY	
DATE	

T:\16523A-Permanent BMP\Cadd\Sheets\Section\TS-02.dgn



10/21/16	Revised Sheet
Date	Revision

STATE OF HAWAII
DEPARTMENT OF TRANSPORTATION
HIGHWAYS DIVISION

BIOSWALE
TYPICAL SECTION-2
MISCELLANEOUS PERMANENT BEST
MANAGEMENT PRACTICES ON OAHU
PROJECT NO. HWY-0-02-11R
Scale: 1/2"=1'-0" Date: April, 2014