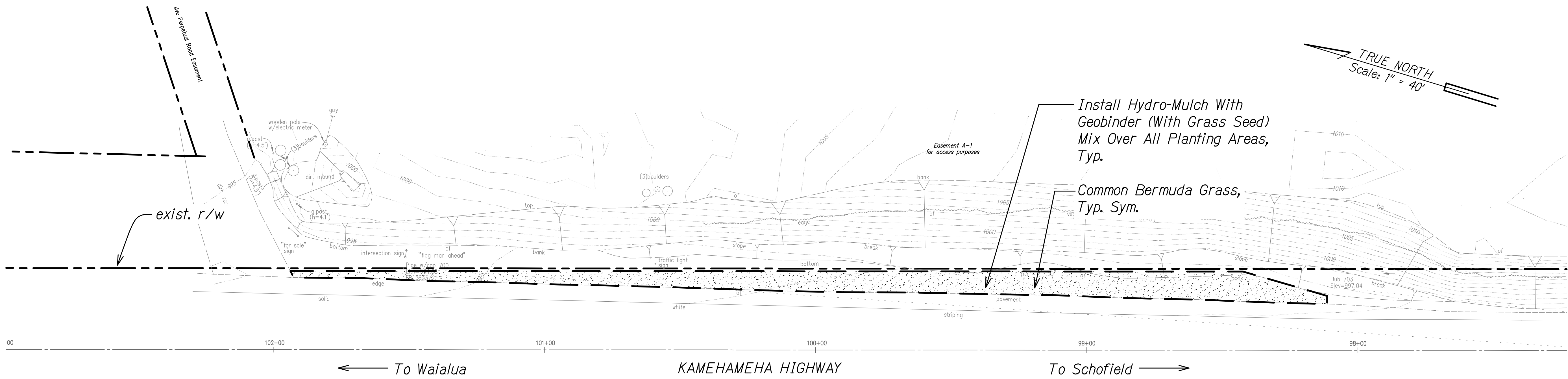


FED. ROAD DIST. NO.	STATE	PROJ. NO.	FISCAL YEAR	SHEET NO.	TOTAL SHEETS
HAWAII	HAW.	HWY-O-02-20	2022	38	58



PLANT SCHEDULE PID 496

HYDRO-MULCH SEEDING	BOTANICAL NAME	COMMON NAME
	Cynodon dactylon	Common Bermuda Grass

- Notes:
- Provide and incorporate soil amendments as recommended by the soil analysis report. Refer to Specification Section 618 - Soil Preparation for soil preparation procedures.
 - Install hydro-mulch with geobinder (with grass seed) mix over all planting areas. Refer to Specification Section 209 - Temporary Water Pollution, Dust, And Erosion Control for installation sequence of erosion control matting, hydro-mulch, and plantings.
 - Contractor will be responsible for weeding and watering throughout the 9-month plant establishment period. Refer to Specification Section 619 - Planting.
 - Refer to Civil drawings for permanent BMP plans and details.

ORIGINAL PLAN	SURVEY PLOTTED BY	DATE
NOTE BOOK	DRAWN BY	
QUANTITIES BY	DESIGNED BY	
CHECKED BY		
N.		

LP-02 PID 496.DWG 3/7/2022 5:08:51 PM

PID 496 PLANTING PLAN
Scale: 1" = 20'-0"

STATE OF HAWAII
DEPARTMENT OF TRANSPORTATION
HIGHWAYS DIVISION

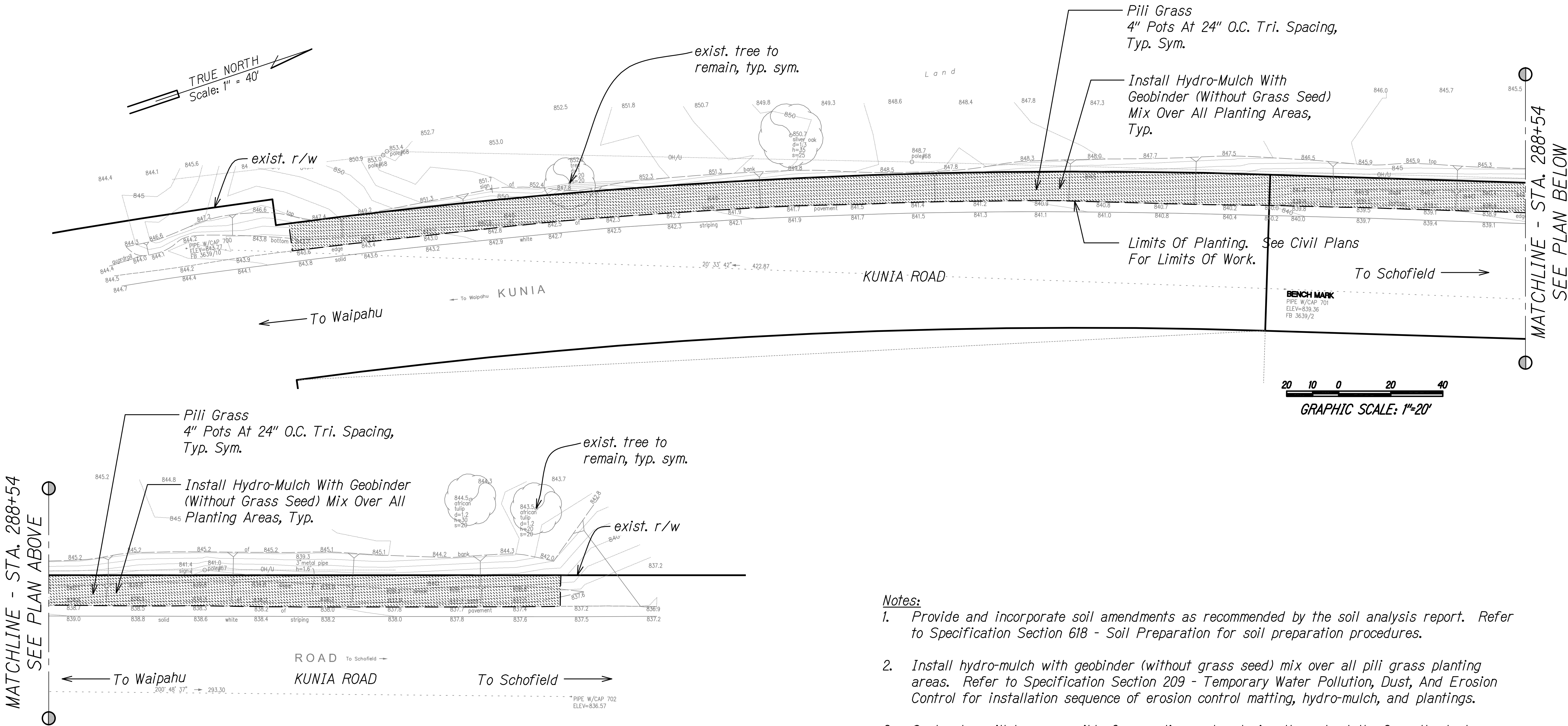
PID 496 PLANTING PLAN

MISCELLANEOUS PERMANENT BEST MANAGEMENT PRACTICES, PHASE 3, VARIOUS LOCATIONS ON OAHU

Project No. HWY-O-02-20
Scale: 1" = 20'-0" Date: March 2022

SHEET No. LP-02 OF 12 SHEETS

FED. ROAD DIST. NO.	STATE	PROJ. NO.	FISCAL YEAR	SHEET NO.	TOTAL SHEETS
HAWAII	HAW.	HWY-O-02-20	2022	39	58



- Notes:**
- Provide and incorporate soil amendments as recommended by the soil analysis report. Refer to Specification Section 618 - Soil Preparation for soil preparation procedures.
 - Install hydro-mulch with geobinder (without grass seed) mix over all pili grass planting areas. Refer to Specification Section 209 - Temporary Water Pollution, Dust, And Erosion Control for installation sequence of erosion control matting, hydro-mulch, and plantings.
 - Contractor will be responsible for weeding and watering throughout the 9-month plant establishment period. Refer to Specification Section 619 - Planting.
 - Refer to Civil drawings for erosion control matting plans and details.

PLANT SCHEDULE PID 21

GROUND COVER	BOTANICAL NAME	COMMON NAME	CONT
	<i>Heteropogon contortus</i>	Pili Grass	4" Pot

PID 21 PLANTING PLAN
Scale: 1" = 20'-0"

4/30/22
EXP. DATE
Russell Y.J. Chung
This work was prepared by me or under my supervision.

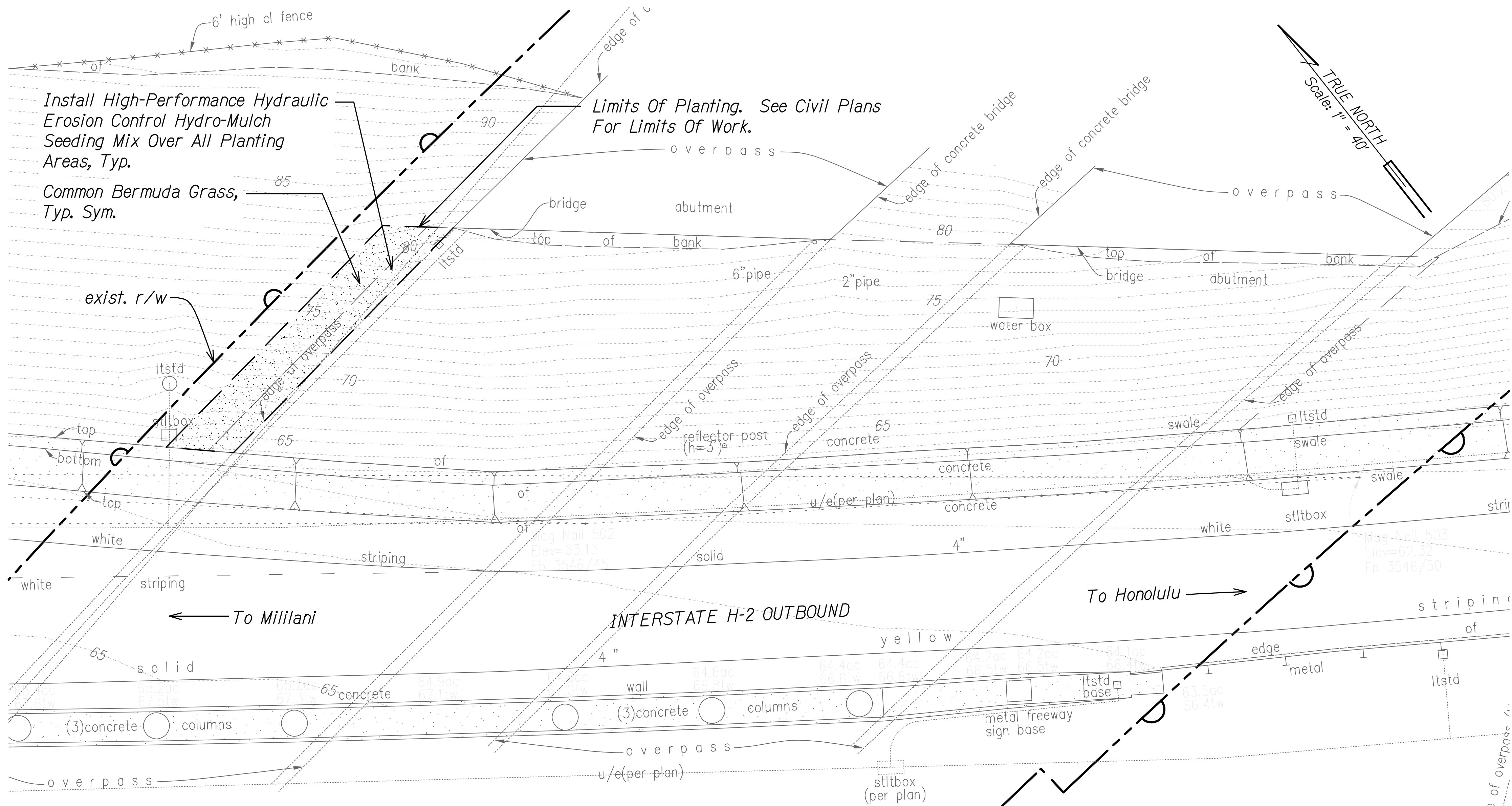
STATE OF HAWAII
DEPARTMENT OF TRANSPORTATION
HIGHWAYS DIVISION

PID 21 PLANTING PLAN

MISCELLANEOUS PERMANENT BEST MANAGEMENT PRACTICES, PHASE 3, VARIOUS LOCATIONS ON OAHU
Project No. HWY-O-02-20
Scale: 1" = 20'-0" Date: March 2022

SHEET No. LP-03 OF 12 SHEETS

FED. ROAD DIST. NO.	STATE	PROJ. NO.	FISCAL YEAR	SHEET NO.	TOTAL SHEETS
HAWAII	HAW.	HWY-O-02-20	2022	40	58



Notes:

1. Provide and incorporate soil amendments as recommended by the soil analysis report. Refer to Specification Section 618 - Soil Preparation for soil preparation procedures.
2. Install high-performance hydraulic erosion control hydro-mulch seeding mix over all planting areas. Refer to Specification Section 209 - Temporary Water Pollution, Dust, And Erosion Control for installation sequence of erosion control matting, hydro-mulch, and plantings.
3. Contractor shall be responsible for weeding and watering throughout the 9-month plant establishment period. Refer to Specification Section 641 - Hydro-Mulch Seeding.
4. Refer to Civil drawings for erosion control matting plans and details. Install erosion control matting on disturbed areas per manufacturer's instructions and recommendations.

PLANT SCHEDULE PID 246

GROUND COVER	BOTANICAL NAME	COMMON NAME	CONT
	<i>Cynodon dactylon</i>	Common Bermuda Grass	Seed

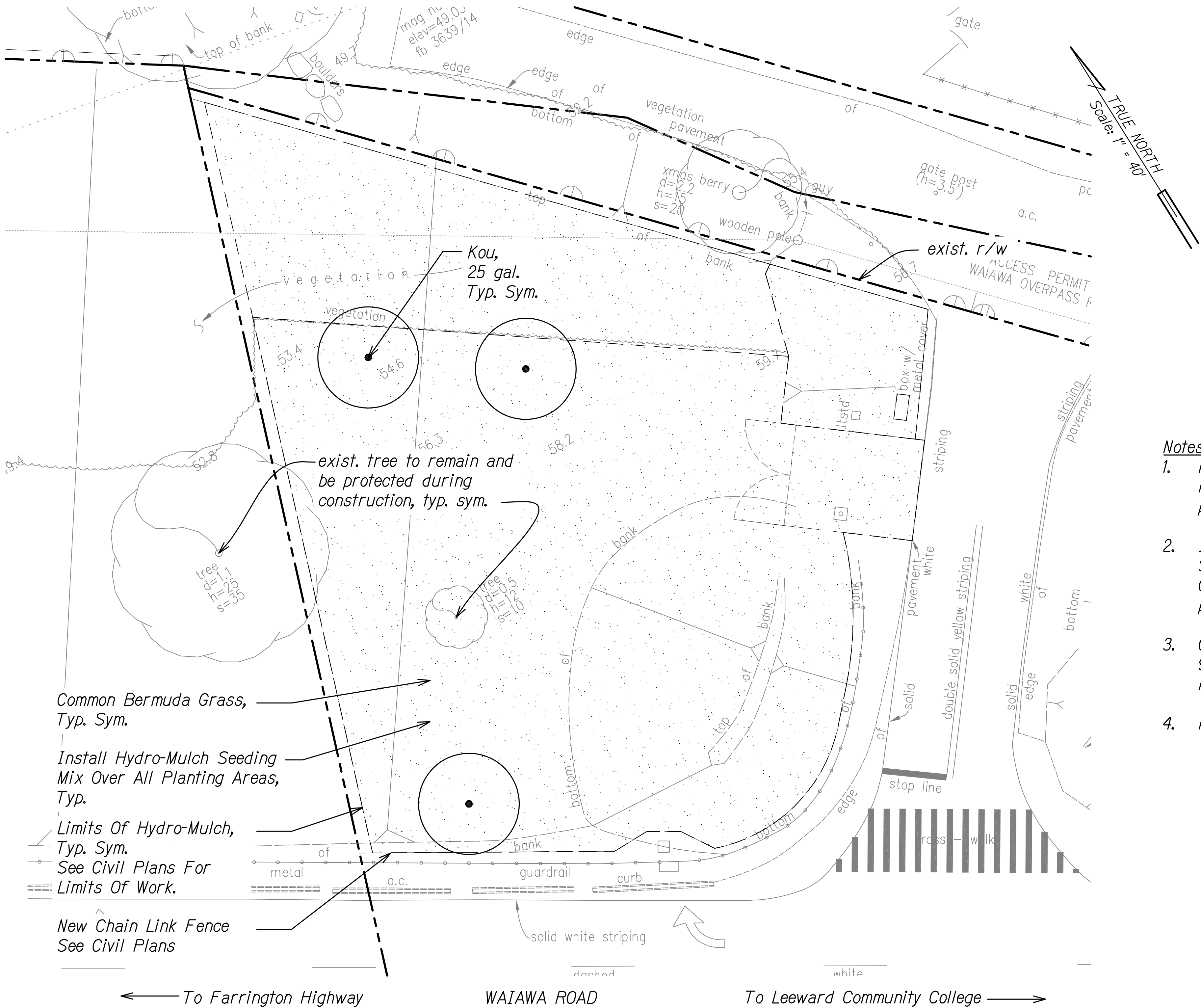
PID 246 PLANTING PLAN

Scale: 1" = 10'-0"

RUSSELL Y.J. CHUNG
LICENSED PROFESSIONAL LANDSCAPE ARCHITECT
No. 6076
HAWAII, U.S.A.
4/30/22
EXP. DATE
This work was prepared by me or under my supervision.

STATE OF HAWAII
DEPARTMENT OF TRANSPORTATION
HIGHWAYS DIVISION
PID 246 PLANTING PLAN
MISCELLANEOUS PERMANENT BEST MANAGEMENT PRACTICES, PHASE 3, VARIOUS LOCATIONS ON OAHU
Project No. HWY-O-02-20
Scale: 1" = 10'-0" Date: March 2022
SHEET No. LP-04 OF 12 SHEETS

FED. ROAD DIST. NO.	STATE	PROJ. NO.	FISCAL YEAR	SHEET NO.	TOTAL SHEETS
HAWAII	HAW.	HWY-O-02-20	2022	41	58



- Notes:**
1. Provide and incorporate soil amendments as recommended by the soil analysis report. Refer to Specification Section 618 - Soil Preparation for soil preparation procedures.
 2. Install hydro-mulch seeding mix over all grass planting areas. Refer to Specification Section 209 - Temporary Water Pollution, Dust, And Erosion Control for installation sequence of erosion control matting, hydro-mulch, and plantings.
 3. Contractor will be responsible for weeding and watering throughout the 9-month plant establishment period. Refer to Specification Section 619 - Planting.
 4. Refer to Civil drawings for permanent BMP plans and details.

PLANT SCHEDULE PID 973

TREES	BOTANICAL NAME	COMMON NAME	CONT
	<i>Cordia subcordata</i>	Kou	25 Gal.
GROUND COVER	BOTANICAL NAME	COMMON NAME	CONT
	<i>Cynodon dactylon</i>	Bermuda Grass	Hydro-seed



PID 973 PLANTING PLAN
Scale: 1" = 10'-0"

4/30/22
EXP. DATE
This work was prepared by me or under my supervision.

STATE OF HAWAII
DEPARTMENT OF TRANSPORTATION
HIGHWAYS DIVISION

PID 973 PLANTING PLAN

MISCELLANEOUS PERMANENT BEST MANAGEMENT PRACTICES, PHASE 3, VARIOUS LOCATIONS ON OAHU

Project No. HWY-O-02-20
Scale: 1" = 10'-0" Date: March 2022

SHEET No. LP-05 OF 12 SHEETS

SURVEY PLOTTED BY	DATE
DESIGNED BY	
NOTED BY	
QUANTITIES BY	
CHECKED BY	

LP-05-PID 973.DWG 3/8/2022 12:06:49 AM

FED. ROAD DIST. NO.	STATE	PROJ. NO.	FISCAL YEAR	SHEET NO.	TOTAL SHEETS
HAWAII	HAW.	HWY-O-02-20	2022	43	58

TREE NUMBER	TREE TYPE	APPROX. TRUNK DIAMETER (FEET)	APPROX. CANOPY SPREAD (FEET)	APPROX. HEIGHT (FEET)	STATUS
1	Canopy Tree	1.0	40	35	Remain
2	Canopy Tree	0.5	15	10	Remain
3	Canopy Tree	0.5	15	10	Remain
4	Canopy Tree	1.5	25	15	Remain
5	Canopy Tree	0.8	15	10	Remain
6	Canopy Tree	0.8	15	10	Remain
7	Canopy Tree	0.5	12	9	Remain
8	Canopy Tree	2.2	45	45	Remain
9	Canopy Tree	1	20	25	Remove
10	Canopy Tree	1.2	20	35	Remove
11	Canopy Tree	1.1	30	35	Remove
12	Canopy Tree	0.7	30	35	Remove
13	Canopy Tree	0.5	15	10	Remain
14	Canopy Tree	0.5	20	15	Remain
15	Canopy Tree	0.5	15	10	Remain
16	Canopy Tree	0.5	6	5	Remain
17	Canopy Tree	2	50	50	Remove
18	Canopy Tree	0.5	10	15	Remain
19	Canopy Tree	0.5	10	15	Remain
20	Canopy Tree	0.5	10	6	Remain
21	Canopy Tree	1	20	25	Remain
22	Canopy Tree	0.8	20	15	Remain
23	Canopy Tree	0.7	15	10	Remain
24	Canopy Tree	1	25	20	Remain
25	Canopy Tree	0.7	20	15	Remain
26	Canopy Tree	0.7	15	10	Remain
27	Canopy Tree	0.5	15	15	Remain
28	Canopy Tree	1.3	20	20	Remove
29	Canopy Tree	0.5	15	15	Remove
30	Canopy Tree	2	20	35	Remove
31	Canopy Tree	0.7	10	15	Remove
32	Canopy Tree	0.7	10	20	Remove
33	Canopy Tree	0.7	10	20	Remove
34	Canopy Tree	1	20	15	Remain
35	Canopy Tree	1	20	15	Remain
36	Canopy Tree	1.8	10	30	?
37	Canopy Tree	1	20	20	?
38	Canopy Tree	1.7	15	20	?
39	Canopy Tree	1	15	10	Remain
40	Canopy Tree	1	10	12	Remain
41	Canopy Tree	0.5	13	12	Remain
42	Canopy Tree	1.2	15	20	Remove
43	Canopy Tree	0.9	15	15	Remain
44	Canopy Tree	1.1	35	30	Remain
45	Canopy Tree	0.5	12	7	Remain
46	Canopy Tree	3	35	20	Remain
47	Canopy Tree	0.5	12	5	Remain
48	Canopy Tree	0.5	12	5	Remain

N.I.C.

SURVEY PLOTTED BY: _____ DATE: _____

DESIGNED BY: _____

NOTED BY: _____

QUANTITIES BY: _____

CHECKED BY: _____

ORIGINAL PLAN

NOTE BOOK

No. _____

LP-07-PID 223-DEMOL-NICZUNG 3/16/2022 10:56:32 AM

Note:
1. Demolish and remove all invasive and/or non-native trees and shrubs within project limits. Table is provided for convenience only. Contractor is responsible for verifying existing site conditions.

RUSSELL Y.J. CHUNG

LICENSED PROFESSIONAL LANDSCAPE ARCHITECT

No. 6076

HAWAII, U.S.A.

4/30/22

EXP. DATE

Russell Chung

This work was prepared by me or under my supervision.

STATE OF HAWAII
DEPARTMENT OF TRANSPORTATION
HIGHWAYS DIVISION

TREE DEMOLITION TABLE

PID 223

MISCELLANEOUS PERMANENT BEST MANAGEMENT PRACTICES, PHASE 3, VARIOUS LOCATIONS ON OAHU

Project No. HWY-O-02-20

Scale: 1" = 20'-0"

Date: March 2022

SHEET No. LP-07 OF 12 SHEETS

43

TREE PROTECTION ZONE:

-
- Orange Rebar Cap
- 6' Steel T-Post @ 5' O.C.
- Orange Plastic Fence
- Fin. Grade
- 4'-0"
- 2'-0"
- Note:
Remove fence
after construction
is completed.

Tree Trunk

Orange Construction Fence. See Detail A Above.

10'-0" Min.

No Grading, Compaction or Construction Zone (Typ.)

A diagram showing a tree with a trunk and a canopy. A vertical line, labeled "Tree Dripline", runs along the outer edge of the canopy. A horizontal line, labeled "Orange Construction Fence, See Detail Above", is positioned below the dripline. To the left of the tree, a vertical dimension line indicates a distance of 4' from the ground to the top of the fence, and a distance of 2' from the ground to the base of the tree trunk.

TREE PROTECTION

1
LP-07 | LP-07

The diagram illustrates a tree with several pruning techniques labeled on the right side:

- Leader Not Pruned
- Parallel Branch Removed
- Shoots Cut Back To Another Lateral Branch
- Water Sprouts Removed
- Crossing Branches Removed
- Suckers Removed

-
- Diagram illustrating the sequence of cuts for a branch removal:
- Second Cut
 - First Cut
 - Final Cut
 - Branch Collar

TREE PRUNING DETAIL

2
LP-07 | LP-07

SHEET No. *LP-09* OF *12* SHEETS

47

