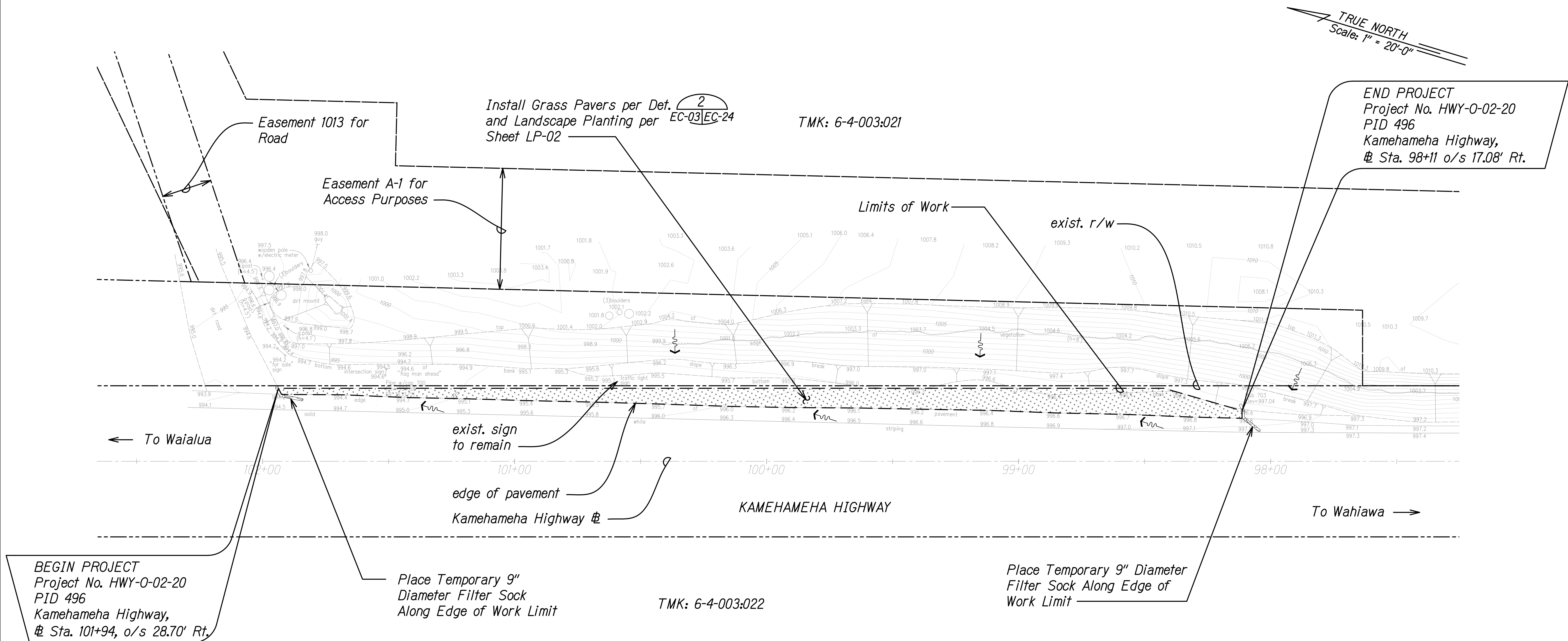


ATTACHMENT A-5

Topography and Drainage Patterns *(Item C.8 of Form C)*

(This page intentionally left blank.)

FED. ROAD DIST. NO.	STATE	PROJ. NO.	FISCAL YEAR	SHEET NO.	TOTAL SHEETS
HAWAII	HAW.	HWY-O-02-20	2022	16	59



TEMPORARY EROSION CONTROL AND PERMANENT BMP PLAN
PID 496
Scale: 1" = 20'-0"

Notes:

1. Sediment and Erosion Control BMP measures shown in the Contract Documents are minimum BMP requirements and do not constitute an acceptable and/or complete Sediment and Erosion Control Plan. The Contractor shall incorporate additional BMPs based upon their means and methods considering site conditions, expected run off flows, and construction sequence in accordance with the Contract Documents including applicable permit document requirements. Cost shall be included in Pay Item 209.0100; Installation, Maintenance, Monitoring, and Removal of BMP.

Legend

Grass Paver and Landscape Planting

TERENCE R. YAMA
LICENSED PROFESSIONAL ENGINEER
No. 14993-C
HAWAII, U.S.A.
4/30/22
EXP. DATE

This work was prepared by me or under my supervision.

STATE OF HAWAII
DEPARTMENT OF TRANSPORTATION
HIGHWAYS DIVISION

**TEMP. EC AND PERMANENT
BMP PLAN PID 496**

MISCELLANEOUS PERMANENT BEST MANAGEMENT
PRACTICES, PHASE 3, VARIOUS LOCATIONS ON OAHU

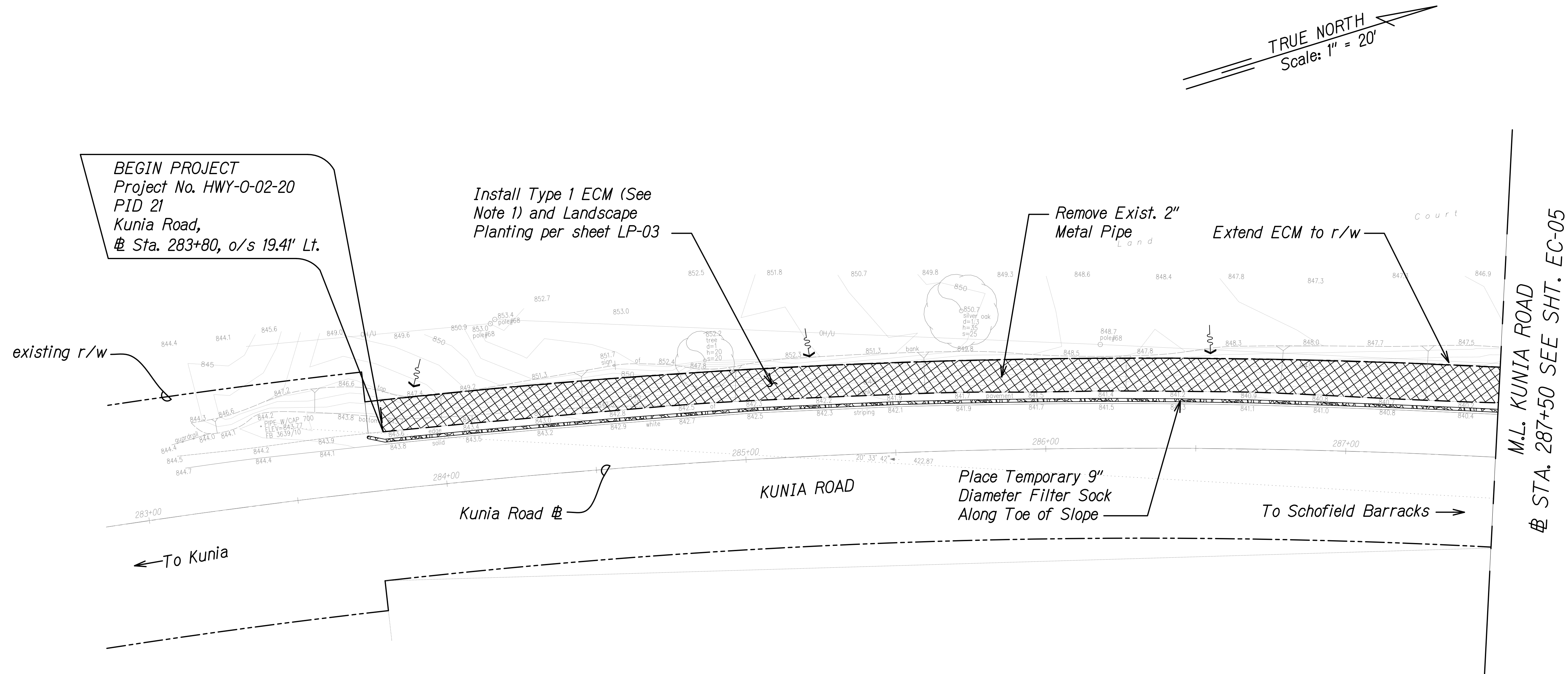
Project No. HWY-O-02-20
Scale: 1" = 20' Date: January 2022

SHEET No. EC-03 OF 24 SHEETS

SURVEY PLOTTED BY	DATE
MADE BY	
DESIGNED BY	
QUANTITIES BY	
CHECKED BY	
ORIGINAL PLAN	
NOTES MADE	
DATE	

EC-PID 496.DWG 1/18/2022 10:32 PM

FED. ROAD DIST. NO.	STATE	PROJ. NO.	FISCAL YEAR	SHEET NO.	TOTAL SHEETS
HAWAII	HAW.	HWY-O-02-20	2022	17	59



TEMPORARY EROSION CONTROL AND PERMANENT BMP PLAN
PID 21
Scale: 1" = 20'

LEGEND



Type 1 ECM and
Landscape Planting

Notes:

- Contractor shall field verify site conditions and ECM limits.
- For ECM details, see Sheets EC-01 & EC-02.
- For installation of ECM around obstacles, see Detail 4 on Sheet EC-01.
- Sediment and Erosion Control BMP measures shown in the Contract Documents are minimum BMPs requirements and do not constitute an acceptable and/or complete Sediment and Erosion Control Plan. The Contractor shall incorporate additional BMPs based upon their means and methods considering site conditions, expected run off flows, and construction sequence in accordance with the Contract Documents including applicable permit document requirements. Cost shall be included in Pay Item 209.0100; Installation, Maintenance, Monitoring, and Removal of BMP.

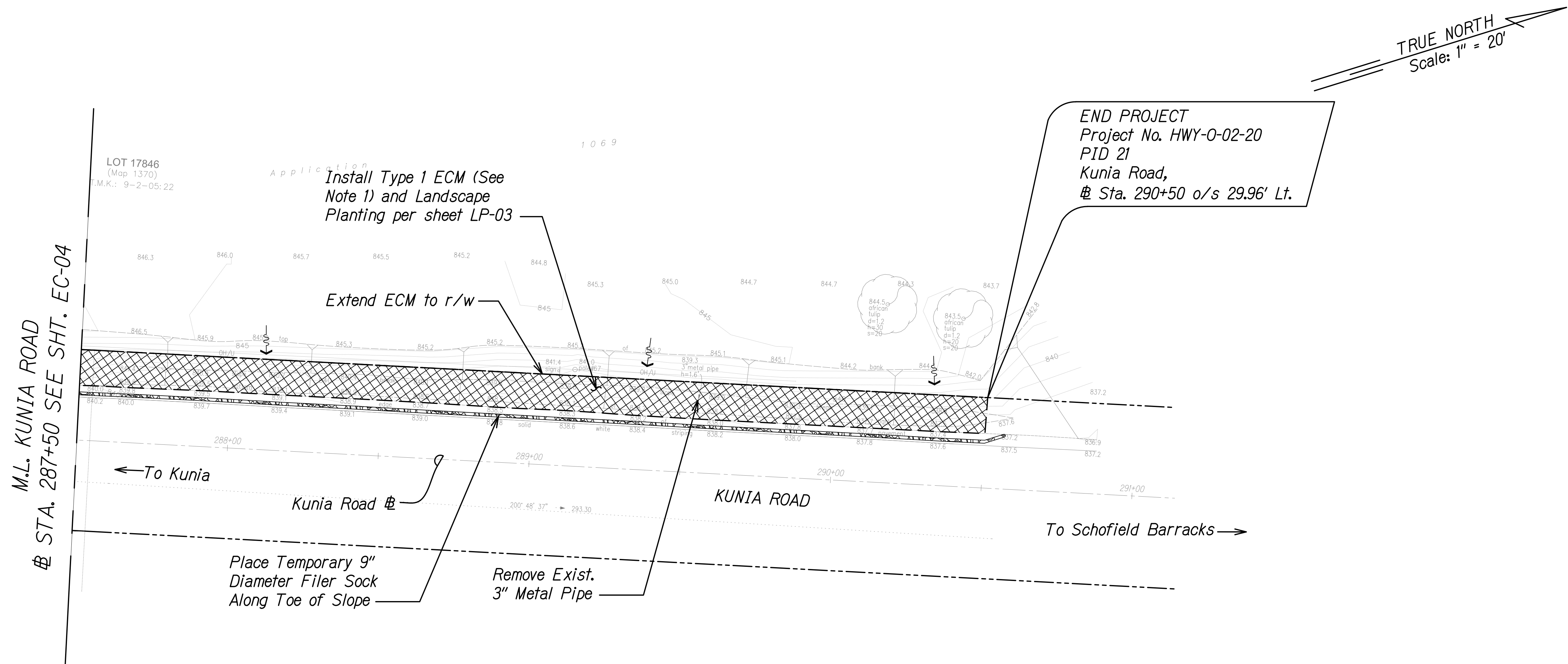


This work was prepared by
me or under my supervision.

STATE OF HAWAII
DEPARTMENT OF TRANSPORTATION
HIGHWAYS DIVISION
TEMP. EC AND PERMANENT
BMP PLAN PID 21
MISCELLANEOUS PERMANENT BEST MANAGEMENT
PRACTICES, PHASE 3, VARIOUS LOCATIONS ON OAHU
Project No. HWY-O-02-20
Scale: 1" = 20' Date: January 2022

SHEET No. EC-04 OF 24 SHEETS

FED. ROAD DIST. NO.	STATE	PROJ. NO.	FISCAL YEAR	SHEET NO.	TOTAL SHEETS
HAWAII	HAW.	HWY-O-02-20	2022	18	59



TEMPORARY EROSION CONTROL AND PERMANENT BMP PLAN
PID 21
Scale: 1" = 20'

LEGEND



Type 1 ECM and
Landscape Planting

Notes:

- Contractor shall field verify site conditions and ECM limits.
- For ECM details, see Sheets EC-01 & EC-02.
- For installation of ECM around obstacles, see Detail 4 on Sheet EC-01.
- Sediment and Erosion Control BMP measures shown in the Contract Documents are minimum BMPs requirements and do not constitute an acceptable and/or complete Sediment and Erosion Control Plan. The Contractor shall incorporate additional BMPs based upon their means and methods considering site conditions, expected run off flows, and construction sequence in accordance with the Contract Documents including applicable permit document requirements. Cost shall be included in Pay Item 209.0100; Installation, Maintenance, Monitoring, and Removal of BMP.

4/30/22
EXP. DATE

This work was prepared by
me or under my supervision.

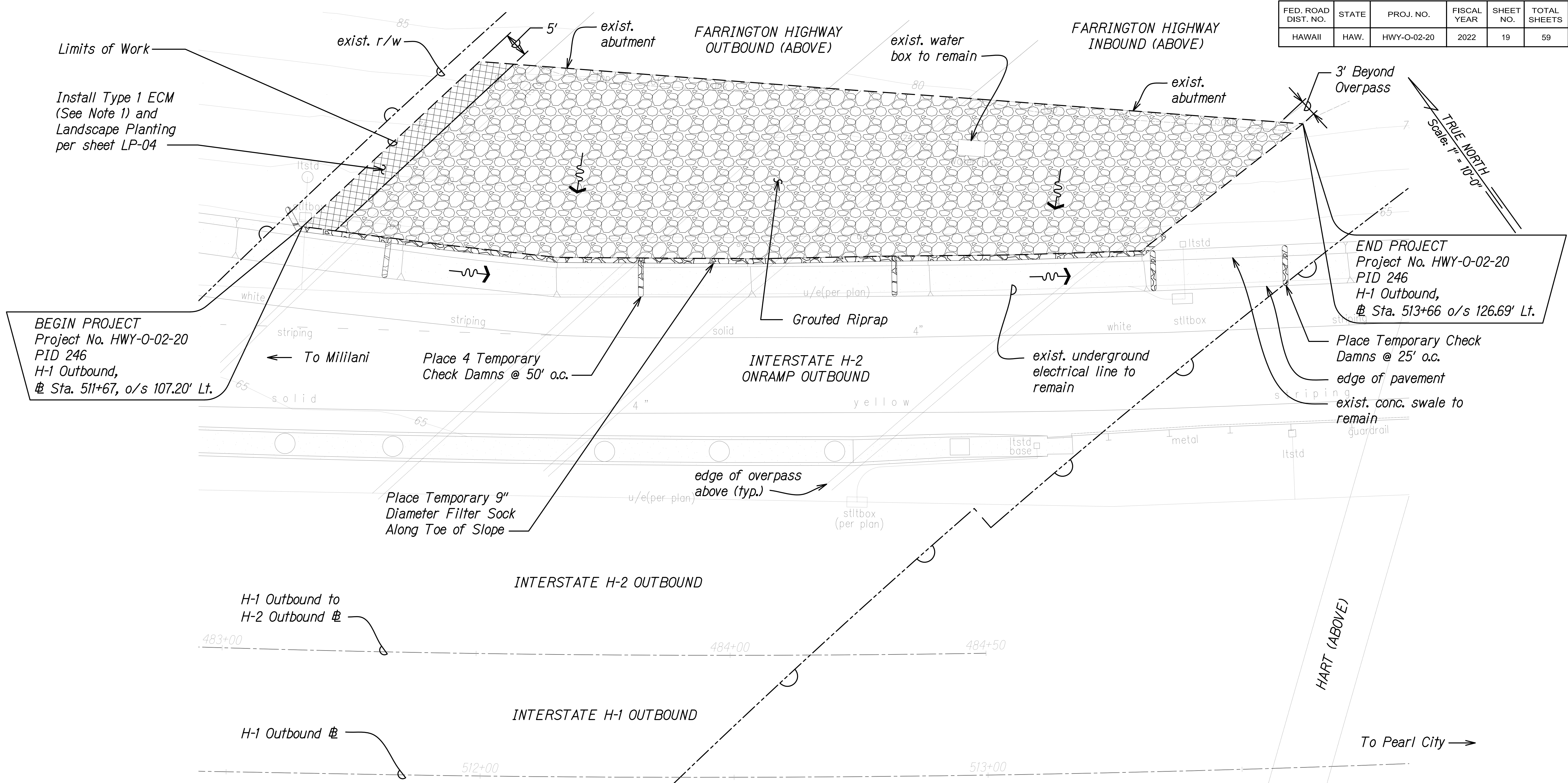
STATE OF HAWAII
DEPARTMENT OF TRANSPORTATION
HIGHWAYS DIVISION

**TEMP. EC AND PERMANENT
BMP PLAN PID 21**

MISCELLANEOUS PERMANENT BEST MANAGEMENT
PRACTICES, PHASE 3, VARIOUS LOCATIONS ON OAHU

Project No. HWY-O-02-20
Scale: 1" = 20' Date: January 2022

FED. ROAD DIST. NO.	STATE	PROJ. NO.	FISCAL YEAR	SHEET NO.	TOTAL SHEETS
HAWAII	HAW.	HWY-O-02-20	2022	19	59



- Notes:**
- For ECM details, see Sheets EC-01 & EC-02.
 - Sediment and Erosion Control BMP measures shown in the Contract Documents are minimum BMPs requirements and do not constitute an acceptable and/or complete Sediment and Erosion Control Plan. The Contractor shall incorporate additional BMPs based upon their means and methods considering site conditions, expected run off flows, and construction sequence in accordance with the Contract Documents including applicable permit document requirements. Cost shall be included in Pay Item 209.0100; Installation, Maintenance, Monitoring, and Removal of BMP.

- Legend**
- Type 1 ECM and Landscape Planting
 - Grouted Riprap

TERENCE R. YAMA
LICENSED PROFESSIONAL ENGINEER
No. 14993-C
HAWAII U.S.A.
4/30/22
EXP. DATE

This work was prepared by me or under my supervision.

STATE OF HAWAII
DEPARTMENT OF TRANSPORTATION
HIGHWAYS DIVISION

**TEMP. EC AND PERMANENT
BMP PLAN PID 246**

MISCELLANEOUS PERMANENT BEST MANAGEMENT
PRACTICES, PHASE 3, VARIOUS LOCATIONS ON OAHU

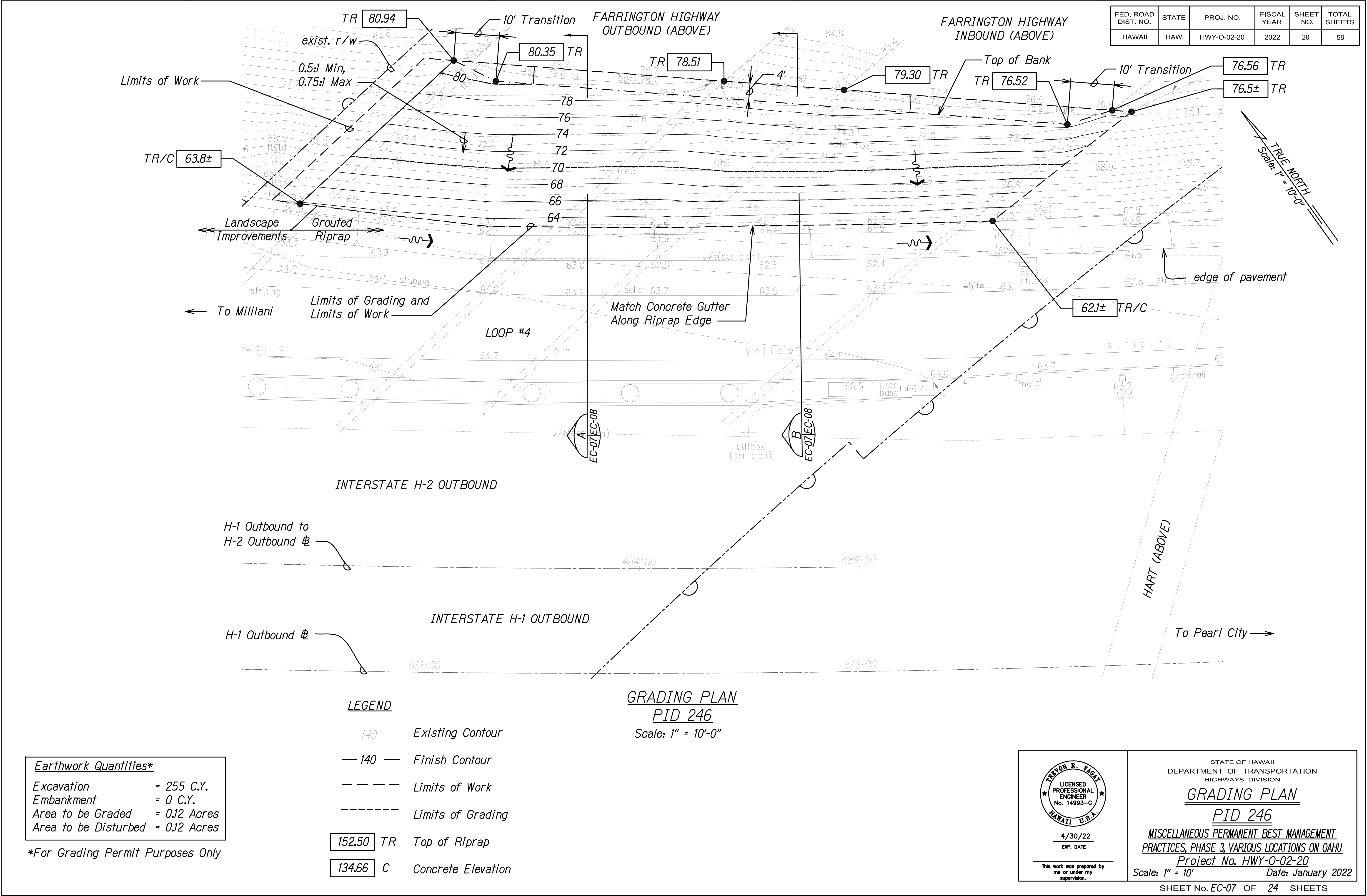
Project No. HWY-O-02-20
Scale: 1" = 10'
Date: January 2022

SHEET No. EC-06 OF 24 SHEETS

DATE	BY
DESIGNED BY	
CHECKED BY	
NOTES MADE	
QUANTITIES BY	
ORIGINAL PLAN	

EC-PID 246.DWG 1/18/2022 10:38 PM

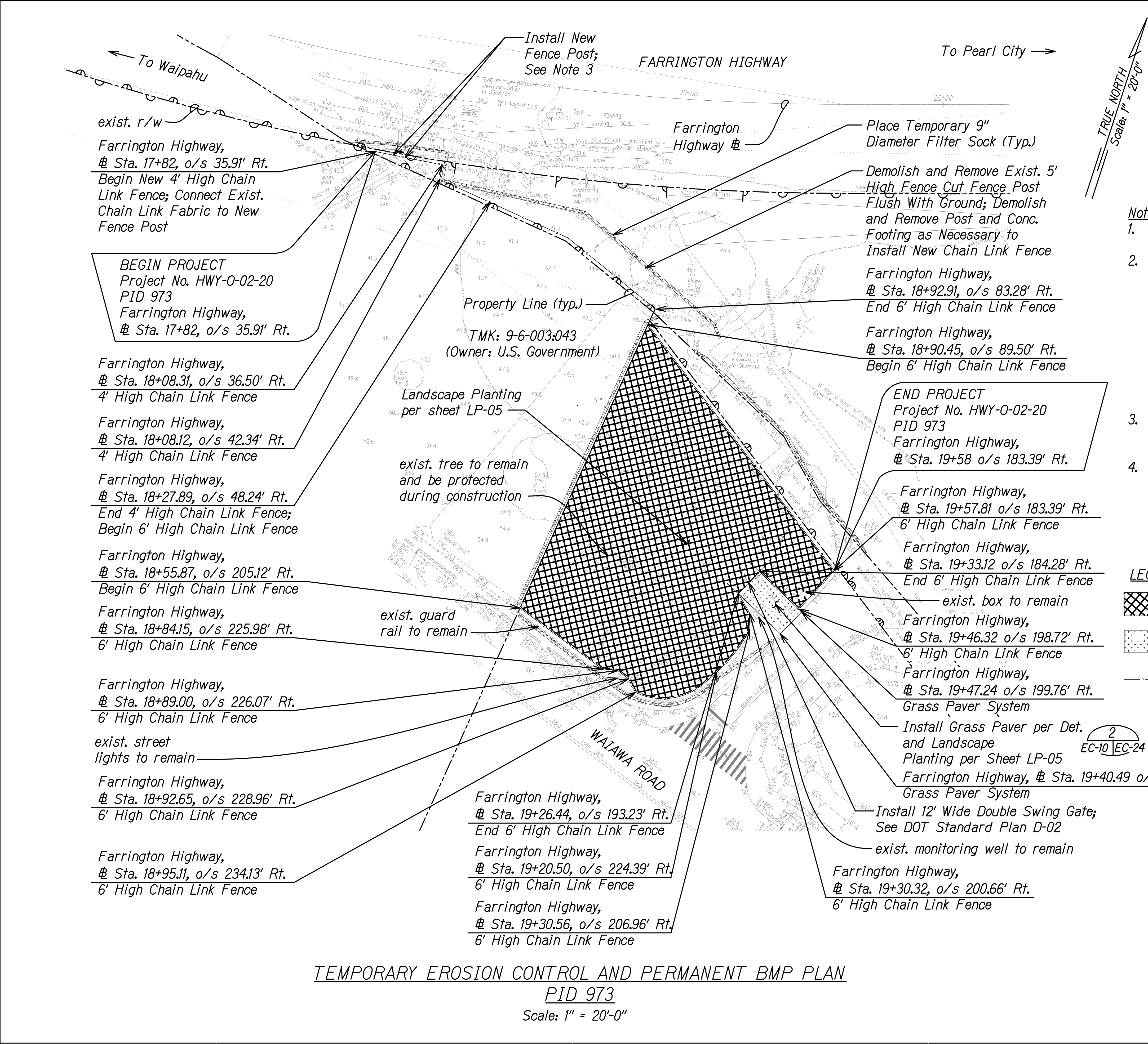
FED. ROAD DIST. NO.	STATE	PROJ. NO.	FISCAL YEAR	SHEET NO.	TOTAL SHEETS
HAWAII	HAW.	HWY-O-02-20	2022	20	59



DATE	BY
DESIGNED BY	
CHECKED BY	
NOTES MADE	
ORIGINAL	

GRAD PID 246.DWG 1/20/2022 3:55:52 PM

FED. ROAD DIST. NO.	STATE	PROJ. NO.	FISCAL YEAR	SHEET NO.	TOTAL SHEETS
HAWAII	HAW.	HWY-O-02-20	2022	23	59



- Notes:**
- See Landscaping Drawings for tree protection.
 - Sediment and Erosion Control BMP measures shown in the Contract Documents are minimum BMPs requirements and do not constitute an acceptable and/or complete Sediment and Erosion Control Plan. The Contractor shall incorporate additional BMPs based upon their means and methods considering site conditions, expected run off flows, and construction sequence in accordance with the Contract Documents including applicable permit document requirements. Cost shall be included in Pay Item 209.0100; Installation, Maintenance, Monitoring, and Removal of BMP.
 - New fence post to be installed no more than 2' from edge of drainage channel.
 - Install new chain link fence on new fence post per DOT Std. Plan D-02 and Det. ¹/_{EC-10 EC-24}

- LEGEND**
- Landscape Planting
 - Grass Paver
 - New Chain Link Fence

4/30/22
EXP. DATE

This work was prepared by me or under my supervision.

STATE OF HAWAII
DEPARTMENT OF TRANSPORTATION
HIGHWAYS DIVISION

**TEMP. EC AND PERMANENT
BMP PLAN PID 496**

MISCELLANEOUS PERMANENT BEST MANAGEMENT
PRACTICES, PHASE 3, VARIOUS LOCATIONS ON OAHU

Project No. HWY-O-02-20
Scale: 1" = 20' Date: January 2022

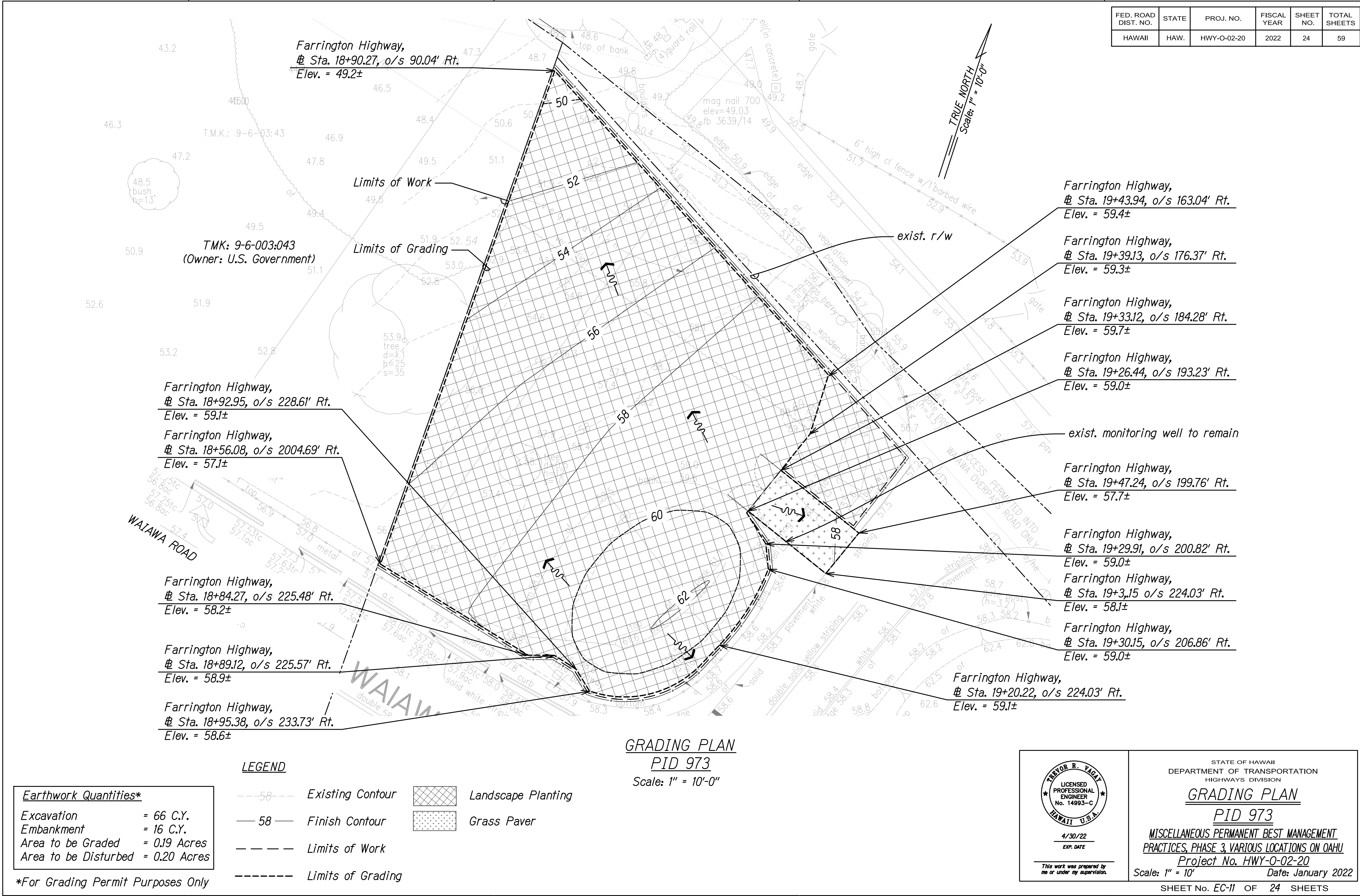
SHEET No. EC-10 OF 24 SHEETS

SURVEY PLOTTED BY	DATE
MADE BY	
DESIGNED BY	
QUANTITIES BY	
CHECKED BY	
NO.	

EC-PID 973.DWG 1/21/2022 3:56:01 PM

TEMPORARY EROSION CONTROL AND PERMANENT BMP PLAN
PID 973
Scale: 1" = 20'-0"

FED. ROAD DIST. NO.	STATE	PROJ. NO.	FISCAL YEAR	SHEET NO.	TOTAL SHEETS
HAWAII	HAW.	HWY-O-02-20	2022	24	59



(This page intentionally left blank.)