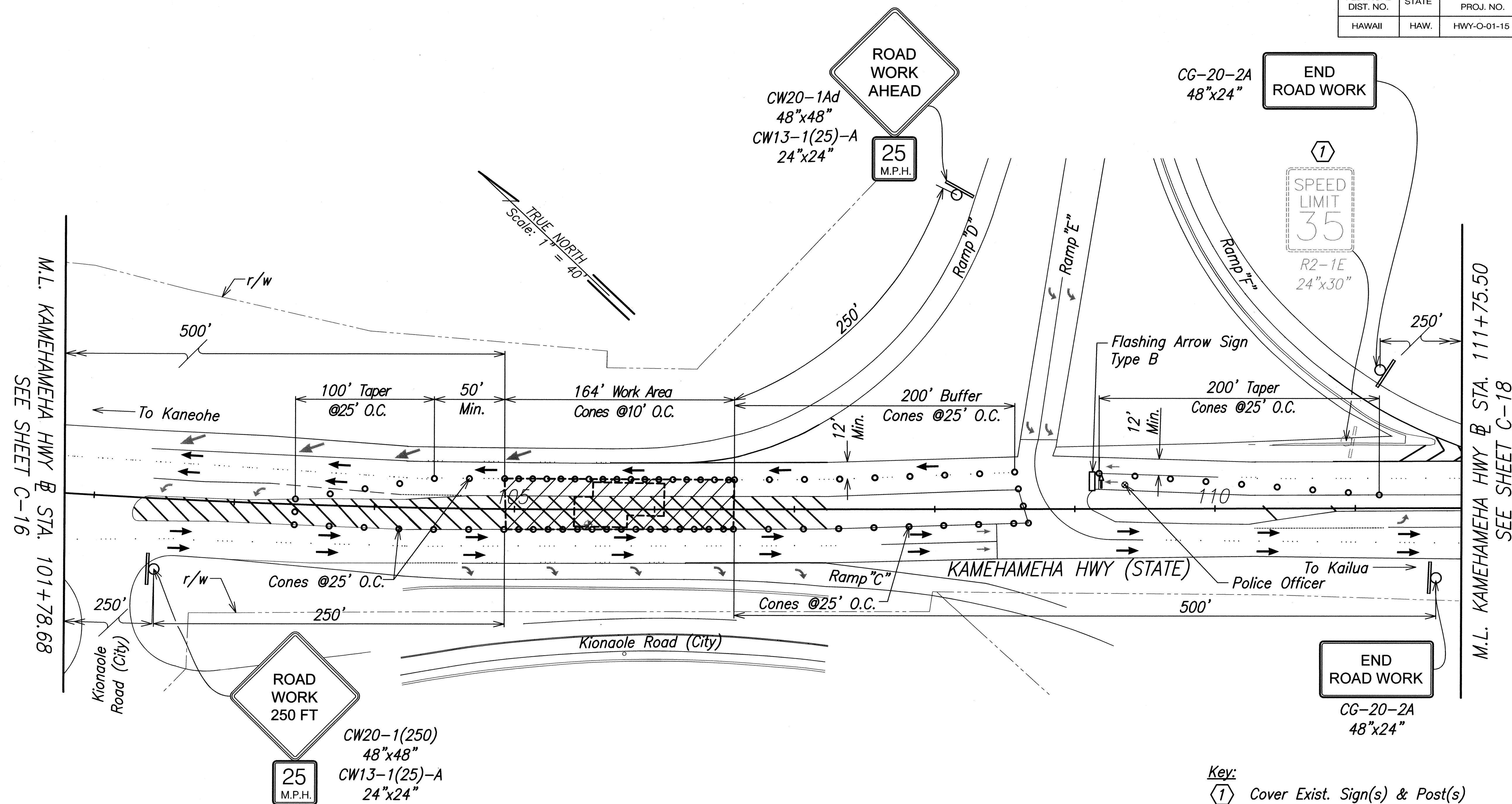


FED. ROAD DIST. NO.	STATE	PROJ. NO.	FISCAL YEAR	SHEET NO.	TOTAL SHEETS
HAWAII	HAW.	HWY-O-01-15	2016	33	52



# Key:

① Cover Exist. Sign(s) & Post(s)

# Notes:

1. For Traffic Control Notes, see Sheet C-13.

# Baseline Notes:

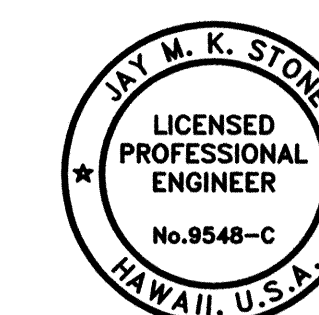
Kamehameha Hwy @ information from "Construction Plans for a Portion of Interstate Route H-3 Halekou Interchange", Project No. I-IR-H3-1(24)11.

ORIGINAL PLAN	SURVEY PLOTTED BY	DATE
NOTE BOOK	DRAWN BY	
	DESIGNED BY	
	CHECKED BY	
No.		

\\schiffers\share\civil\ddt\_highway\2013700400\_oahu\_miscellaneous\bmppa\04\_graphics\CAD\_Sheets\Bld\_Package\_1\C-17\_Traffic\_Control\_Notes\_and\_Plan\_(BMP\_A).dwg

## TRAFFIC CONTROL PLAN PID 111091 (PBMP A)

Scale: 1"=40'-0"

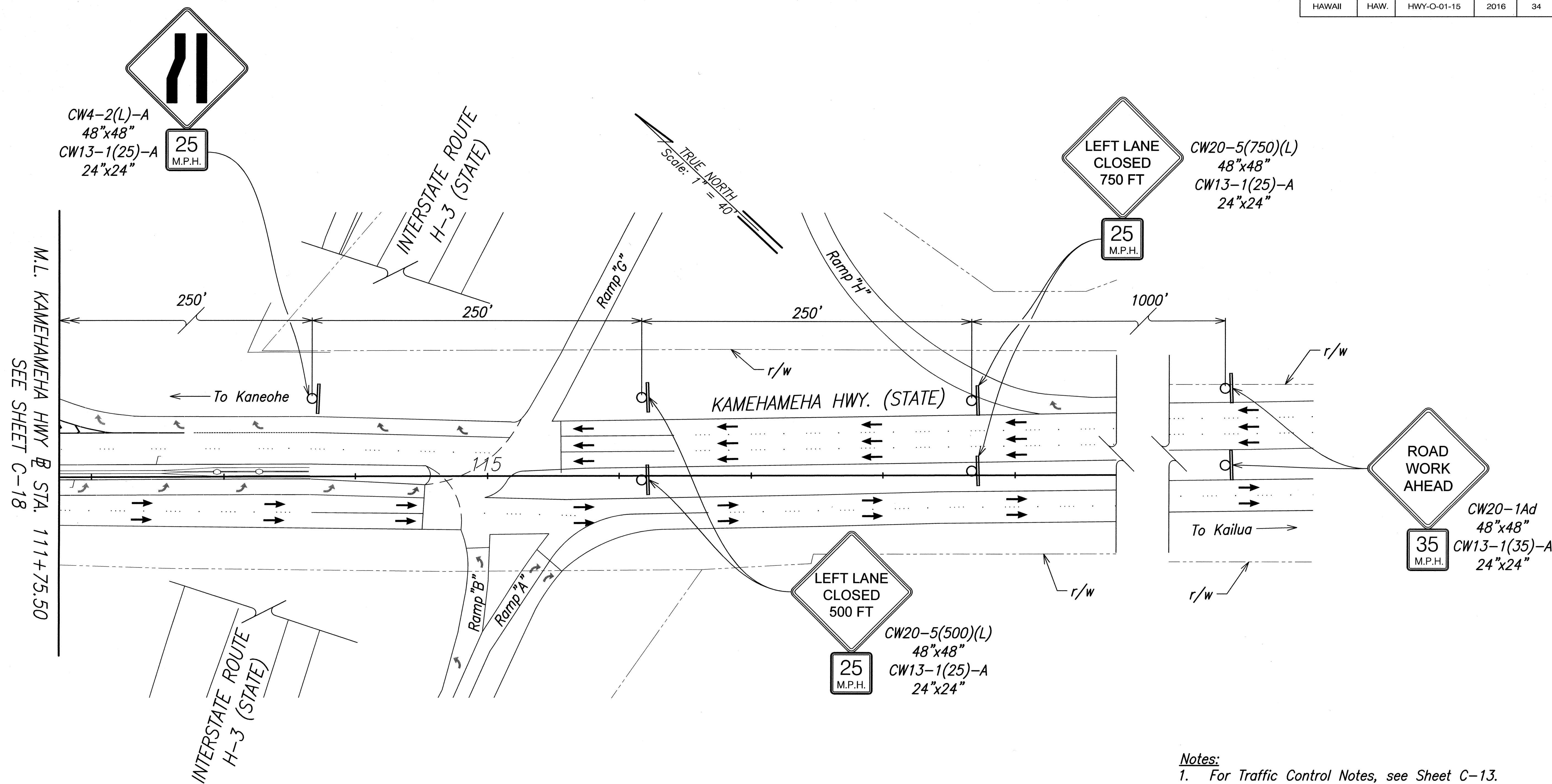


4/30/18  
EXP DATE  
THIS WORK WAS PREPARED BY ME  
OR UNDER MY SUPERVISION

STATE OF HAWAII  
DEPARTMENT OF TRANSPORTATION  
HIGHWAYS DIVISION  
**TRAFFIC CONTROL PLAN**  
**PID 111091 (PBMP A)**  
**MISCELLANEOUS PERMANENT**  
**BEST MANAGEMENT PRACTICES, PHASE 2A**  
Project No. HWY-O-01-15  
Scale: 1"=40' Date: April 2016

SHEET No. C-17 OF 22 SHEETS

FED. ROAD DIST. NO.	STATE	PROJ. NO.	FISCAL YEAR	SHEET NO.	TOTAL SHEETS
HAWAII	HAW.	HWY-O-01-15	2016	34	52



ORIGINAL PLAN	SURVEY PLOTTED BY	DATE
NOTE BOOK	DRAWN BY	
	DESIGNED BY	
	QUANTITIES BY	
	CHECKED BY	
No.		

\\hawaii\shared\Civil\del Highway\2013\00400 oahu miscellaneous\lmpa\04\_graphics\CAD Sheets\Bld Package\1-C-18 Traffic Control Notes and Plan (BMP A).dwg

**TRAFFIC CONTROL PLAN**  
**PID 111091 (PBMP A)**  
 Scale: 1"=40'-0"

**Notes:**  
 1. For Traffic Control Notes, see Sheet C-13.

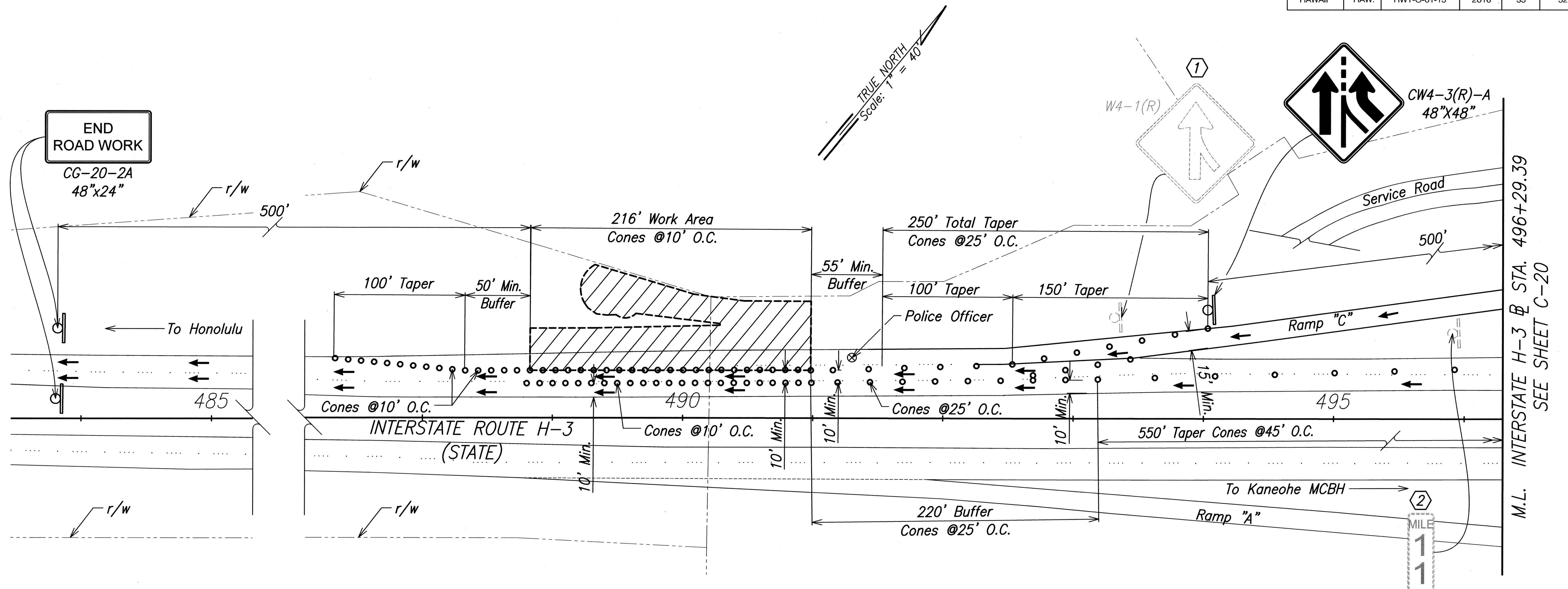
**Baseline Notes:**  
 Kamehameha Hwy @ information from "Construction Plans for a Portion of Interstate Route H-3 Halekou Interchange", Project No. 1-IR-H3-1(24)11.

THIS WORK WAS PREPARED BY ME OR UNDER MY SUPERVISION

STATE OF HAWAII  
 DEPARTMENT OF TRANSPORTATION  
 HIGHWAYS DIVISION

**TRAFFIC CONTROL PLAN**  
**PID 111091 (PBMP A)**  
**MISCELLANEOUS PERMANENT BEST MANAGEMENT PRACTICES, PHASE 2A**  
**Project No. HWY-0-01-15**  
**Scale: 1"=40' Date: April 2016**

FED. ROAD DIST. NO.	STATE	PROJ. NO.	FISCAL YEAR	SHEET NO.	TOTAL SHEETS
HAWAII	HAW.	HWY-O-01-15	2016	35	52



**Key:**

- ① Cover Exist. Sign(s) & Post(s)
- ② Exist. Sign(s) & Post(s) to Remain

**Notes:**

1. For tapers located on curves, buffer zones shall be extended to place the taper on a straight portion of the road.

2. For Traffic Control Notes, see Sheet C-13.

**Baseline Note:**

Interstate Route H-3 @ information from "Plans for Construction of a Portion of Interstate Route H-3 Kaneohe Interchange to Halekou Interchange", Federal Aid Interstate Project No. I-H3-1(50), 1989.

ORIGINAL PLAN	SURVEY PLOTTED BY	DATE
NOTE BOOK	DESIGNED BY	
QUANTITIES BY		
CHECKED BY		
No.		

**TRAFFIC CONTROL PLAN**  
**PID 106997 (PBMP B)**  
 Scale: 1"=40'-0"

4/30/18  
EXP DATE

STATE OF HAWAII  
DEPARTMENT OF TRANSPORTATION  
HIGHWAYS DIVISION

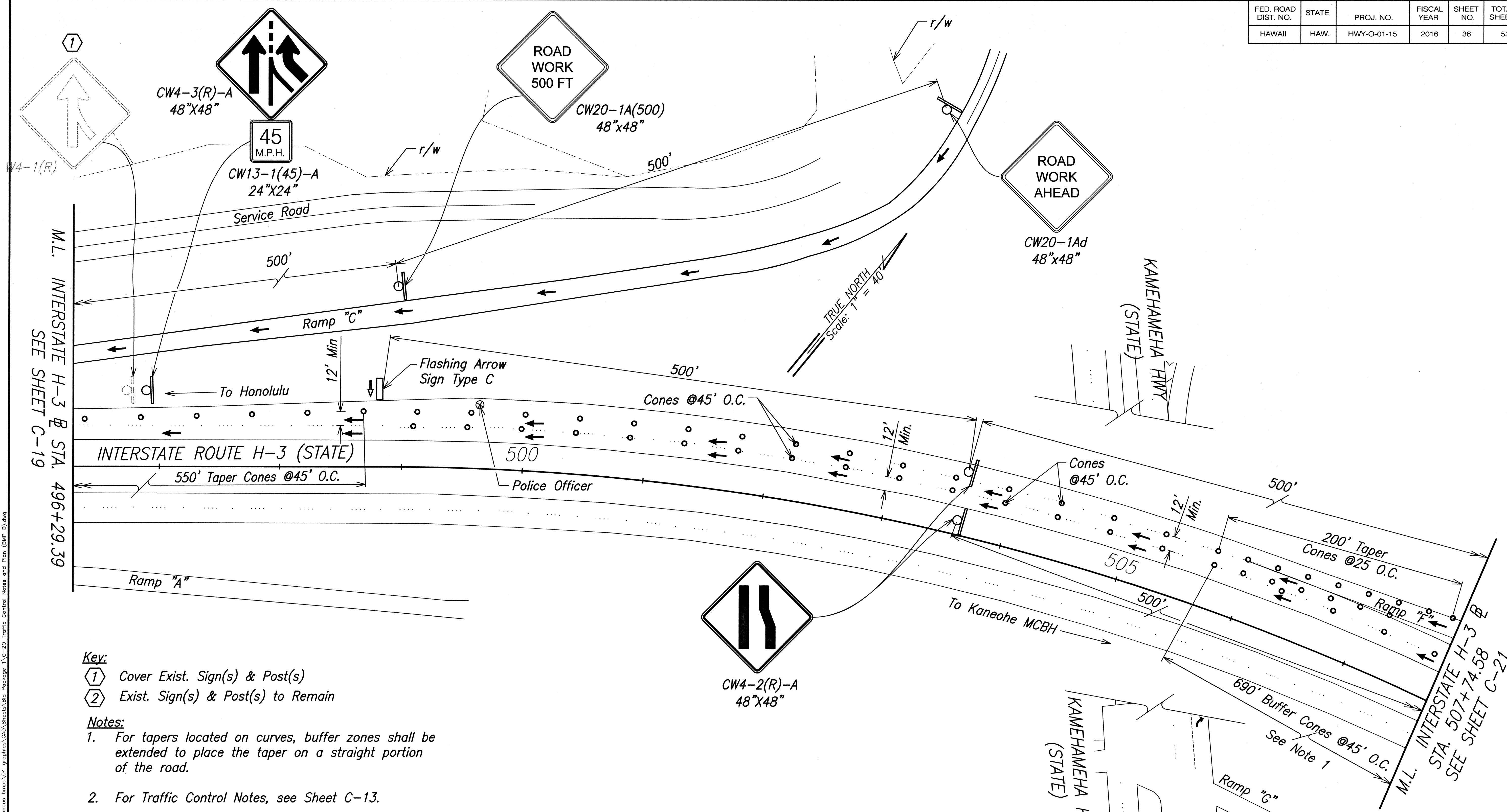
**TRAFFIC CONTROL PLAN**  
**PID 106997 (PBMP B)**  
**MISCELLANEOUS PERMANENT**  
**BEST MANAGEMENT PRACTICES, PHASE 2A**

Project No. HWY-0-01-15  
 Scale: 1"=40' Date: April 2016

SHEET No. C-19 OF 22 SHEETS



FED. ROAD DIST. NO.	STATE	PROJ. NO.	FISCAL YEAR	SHEET NO.	TOTAL SHEETS
HAWAII	HAW.	HWY-O-01-15	2016	36	52



**Key:**

- ① Cover Exist. Sign(s) & Post(s)
- ② Exist. Sign(s) & Post(s) to Remain

**Notes:**

1. For tapers located on curves, buffer zones shall be extended to place the taper on a straight portion of the road.

2. For Traffic Control Notes, see Sheet C-13.

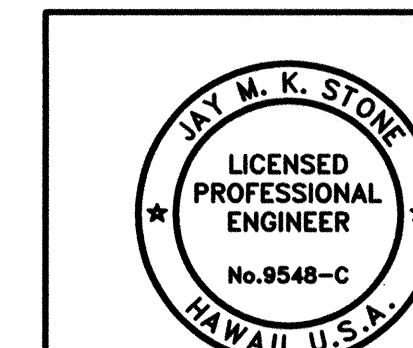
**Baseline Note:**

Interstate Route H-3 @ information from "Plans for Construction of a Portion of Interstate Route H-3 Kaneohe Interchange to Halekou Interchange", Federal Aid Interstate Project No. I-H3-1(50), 1989.

**TRAFFIC CONTROL PLAN  
PID 106997 (PBMP B)**

Scale: 1"=40'-0"

ORIGINAL PLAN	DATE
DESIGNED BY	
TRACED BY	
NOTE BOOK	
QUANTITIES BY	
CHECKED BY	
No.	



4/30/18  
EXP DATE  
THIS WORK WAS PREPARED BY ME  
OR UNDER MY SUPERVISION

STATE OF HAWAII  
DEPARTMENT OF TRANSPORTATION  
HIGHWAYS DIVISION  
**TRAFFIC CONTROL PLAN**  
**PID 106997 (PBMP B)**  
**MISCELLANEOUS PERMANENT**  
**BEST MANAGEMENT PRACTICES, PHASE 2A**  
Project No. HWY-0-01-15  
Scale: 1"=40' Date: April 2016

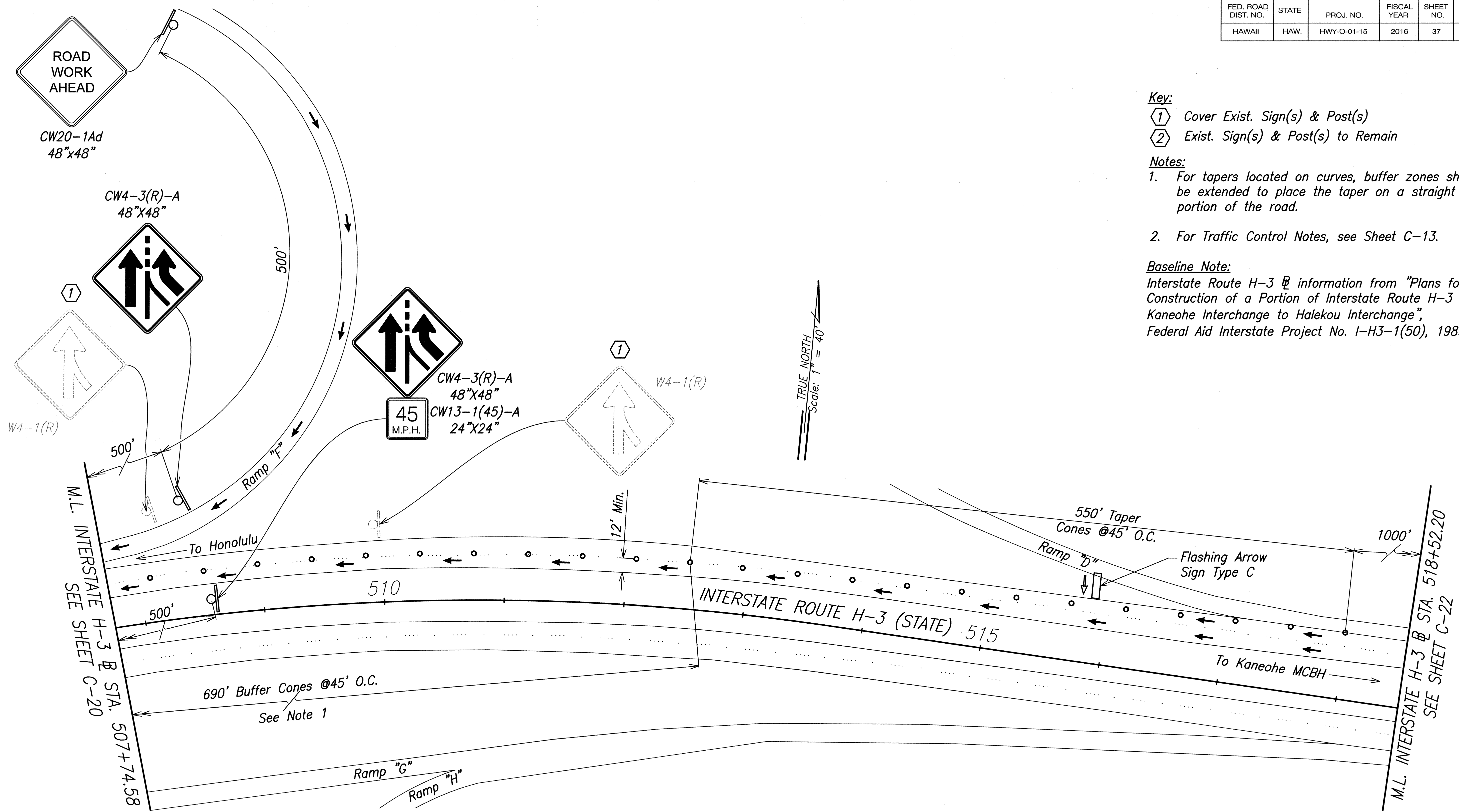
SHEET No. C-20 OF 22 SHEETS

FED. ROAD DIST. NO.	STATE	PROJ. NO.	FISCAL YEAR	SHEET NO.	TOTAL SHEETS
HAWAII	HAW.	HWY-O-01-15	2016	37	52

**Key:**  
 ① Cover Exist. Sign(s) & Post(s)  
 ② Exist. Sign(s) & Post(s) to Remain

**Notes:**  
 1. For tapers located on curves, buffer zones shall be extended to place the taper on a straight portion of the road.  
 2. For Traffic Control Notes, see Sheet C-13.

**Baseline Note:**  
 Interstate Route H-3 @ information from "Plans for Construction of a Portion of Interstate Route H-3 Kaneohe Interchange to Halekou Interchange", Federal Aid Interstate Project No. I-H3-1(50), 1989.



ORIGINAL PLAN	DATE
DESIGNED BY	
CHECKED BY	
NO.	

\\bchfiles\share\Civil\dot highway\2013\700400\_cohu\_miscellaneous\mpm\04\_graphics\CAD\Sheets\Bld Package\1-C-21 Traffic Control Notes and Plan (BMP B).dwg

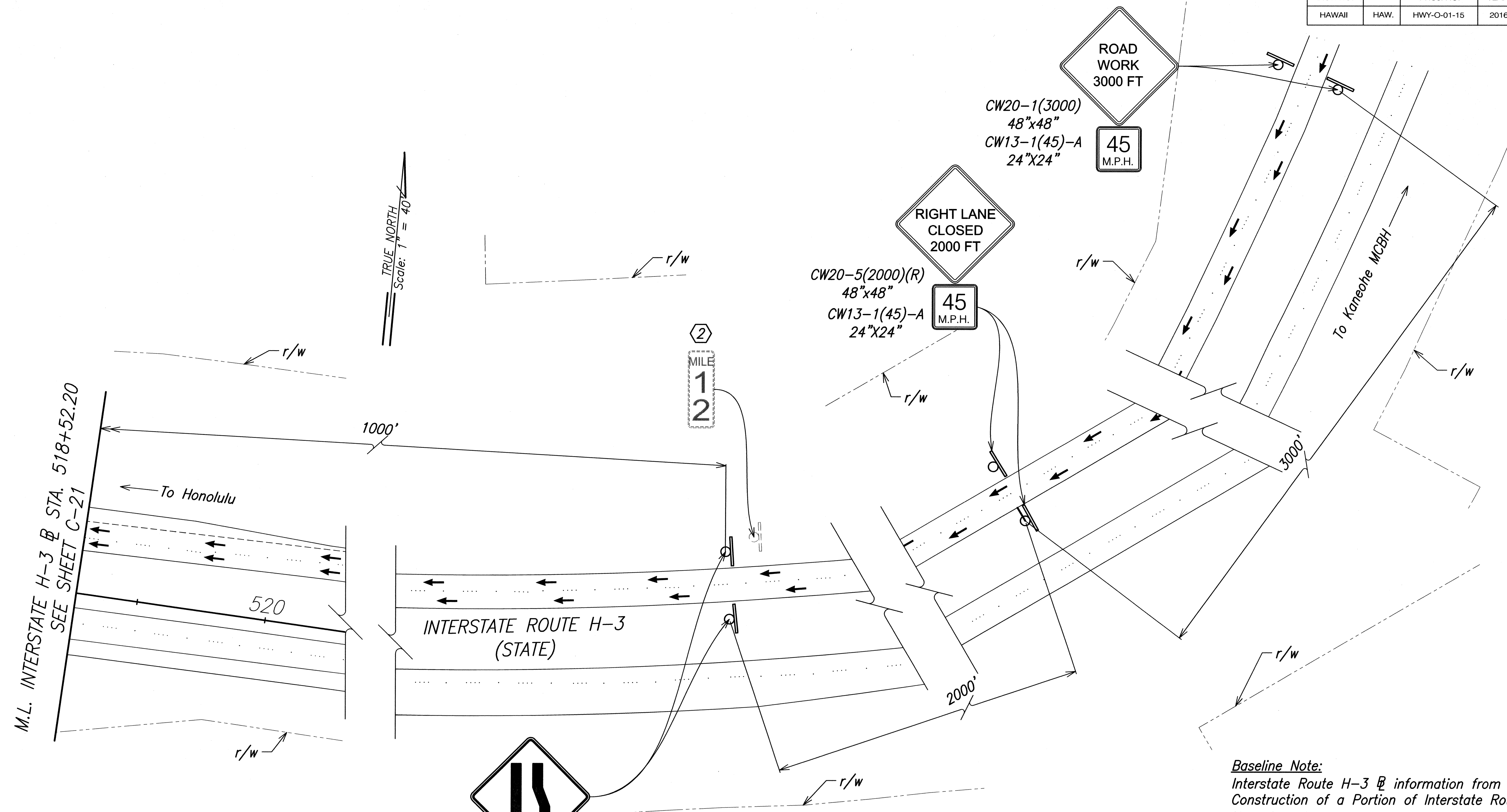
**TRAFFIC CONTROL PLAN**  
**PID 106997 (PBMP B)**  
 Scale: 1"=40'-0"

STATE OF HAWAII  
DEPARTMENT OF TRANSPORTATION  
HIGHWAYS DIVISION

**TRAFFIC CONTROL PLAN**  
**PID 106997 (PBMP B)**  
**MISCELLANEOUS PERMANENT**  
**BEST MANAGEMENT PRACTICES, PHASE 2A**  
**Project No. HWY-0-01-15**  
**Scale: 1"=40' Date: April 2016**

SHEET No. C-21 OF 22 SHEETS

FED. ROAD DIST. NO.	STATE	PROJ. NO.	FISCAL YEAR	SHEET NO.	TOTAL SHEETS
HAWAII	HAW.	HWY-O-01-15	2016	38	52



ORIGINAL PLAN	DATE
DESIGNED BY	
TRACED BY	
NOTE BOOK	
QUANTITIES BY	
CHECKED BY	
No.	

\\hawaii\share\civil\dot highway\2013\00000\cdm\miscellaneous\hmpa\04\graphics\CD\Sheet\Bld Package\1\C-22 Traffic Control Notes and Plan (BMP B).dwg

CW4-2(R)-A  
48"x48"  
CE5-2  
48"x36"

EXIT  
OPEN

- Key:**
- ① Cover Exist. Sign(s) & Post(s)
  - ② Exist. Sign(s) & Post(s) to Remain
- Notes:**
1. For tapers located on curves, buffer zones shall be extended to place the taper on a straight portion of the road.
  2. For Traffic Control Notes, see Sheet C-13.

**Baseline Note:**  
Interstate Route H-3 @ information from "Plans for Construction of a Portion of Interstate Route H-3 Kaneohe Interchange to Halekou Interchange", Federal Aid Interstate Project No. I-H3-1(50), 1989.

**TRAFFIC CONTROL PLAN**  
**PID 106997 (PBMP B)**  
Scale: 1"=40'-0"

THIS WORK WAS PREPARED BY ME OR UNDER MY SUPERVISION

STATE OF HAWAII  
DEPARTMENT OF TRANSPORTATION  
HIGHWAYS DIVISION

**TRAFFIC CONTROL PLAN**  
**PID 106997 (PBMP B)**  
**MISCELLANEOUS PERMANENT**  
**BEST MANAGEMENT PRACTICES, PHASE 2A**  
Project No. HWY-0-01-15  
Scale: 1"=40' Date: April 2016

SHEET No. C-22 OF 22 SHEETS



LANDSCAPE GENERAL NOTES

9. *Contractor shall verify the locations and elevations of all existing utility lines and notify respective owners before commencing any excavation work.*
10. *No material or equipment shall be stockpiled or otherwise stored within highway right-of-way except at locations designated in writing and approved by the Engineer.*
11. *Contractor shall dispose of any removed material at an approved DOH waste management facility, as stated in the Contractor's BMP plan, at no extra cost to the State.*
12. *After the project is completed, the Contractor shall restore grades and groundcover within the project limits to a condition equal to or better than existing condition prior to construction.*
13. *All work specified in the contract but not listed separately in the proposal schedule shall be considered incidental to other various contract items and shall not be paid for separately.*
14. *The Contractor shall be held liable for any damages incurred to the existing landscaping as a result of his operations.*
15. *The Contractor shall comply with Section 212 – Archaeological Monitoring of the Special Provisions prior to commencement of construction activities at the project site.*
16. *Refer to the Standard Plans Summary plan sheets details not shown herein.*
17. *Contact the Hawaii Department of Transportation (HDOT) and/or the City and County of Honolulu for additional plan sheet details not included in the Standard Details Summary and Standard Plans Summary plan sheets.*
18. *Contractor shall be responsible for determining and establishing the water source and delivery method to the Project site. Contractor shall provide and maintain all equipment required to deliver water to the project. Contractor shall be responsible for obtaining and maintaining all necessary permits and agreements for the source of water. Water and establishing water source will be considered an incidental cost to the project.*

### ABBREVIATIONS

<i>B</i>	<i>Baseline</i>
<i>BMP</i>	<i>Best Management Practices</i>
<i>PBMP</i>	<i>Permanent Best Management Practices</i>
<i>CL</i>	<i>Centerline</i>
<i>COL</i>	<i>Column</i>
<i>Conc</i>	<i>Concrete</i>
<i>Cont</i>	<i>Container</i>
<i>Dia</i>	<i>Diameter</i>
<i>Det.</i>	<i>Detail</i>
<i>Dwg</i>	<i>Drawing</i>
<i>FS</i>	<i>Field Specimen</i>
<i>Gal</i>	<i>Gallon</i>
<i>Min</i>	<i>Minimum</i>
<i>MH</i>	<i>Manhole</i>
<i>N/A</i>	<i>Not Applicable</i>
<i>NIC</i>	<i>Not in Contract</i>
<i>NTS</i>	<i>Not to Scale</i>
<i>O.C.</i>	<i>On Center</i>
<i>PID</i>	<i>Project Identification Number</i>
<i>r/w</i>	<i>Right-of-Way</i>
<i>Sta.</i>	<i>Station</i>
<i>TMK</i>	<i>Tax Map Key</i>
<i>Typ</i>	<i>Typical</i>
<i>Typ Sym</i>	<i>Typical Symbol</i>

4:\DOT Highway\2013700400 Oahu Miscellaneous BMPs\Landscape\CAD\Sheets\Phase 2A\39 L-01 Landscape Notes-Legend-Abbrev - PID 106997 (BMP B).dwg

