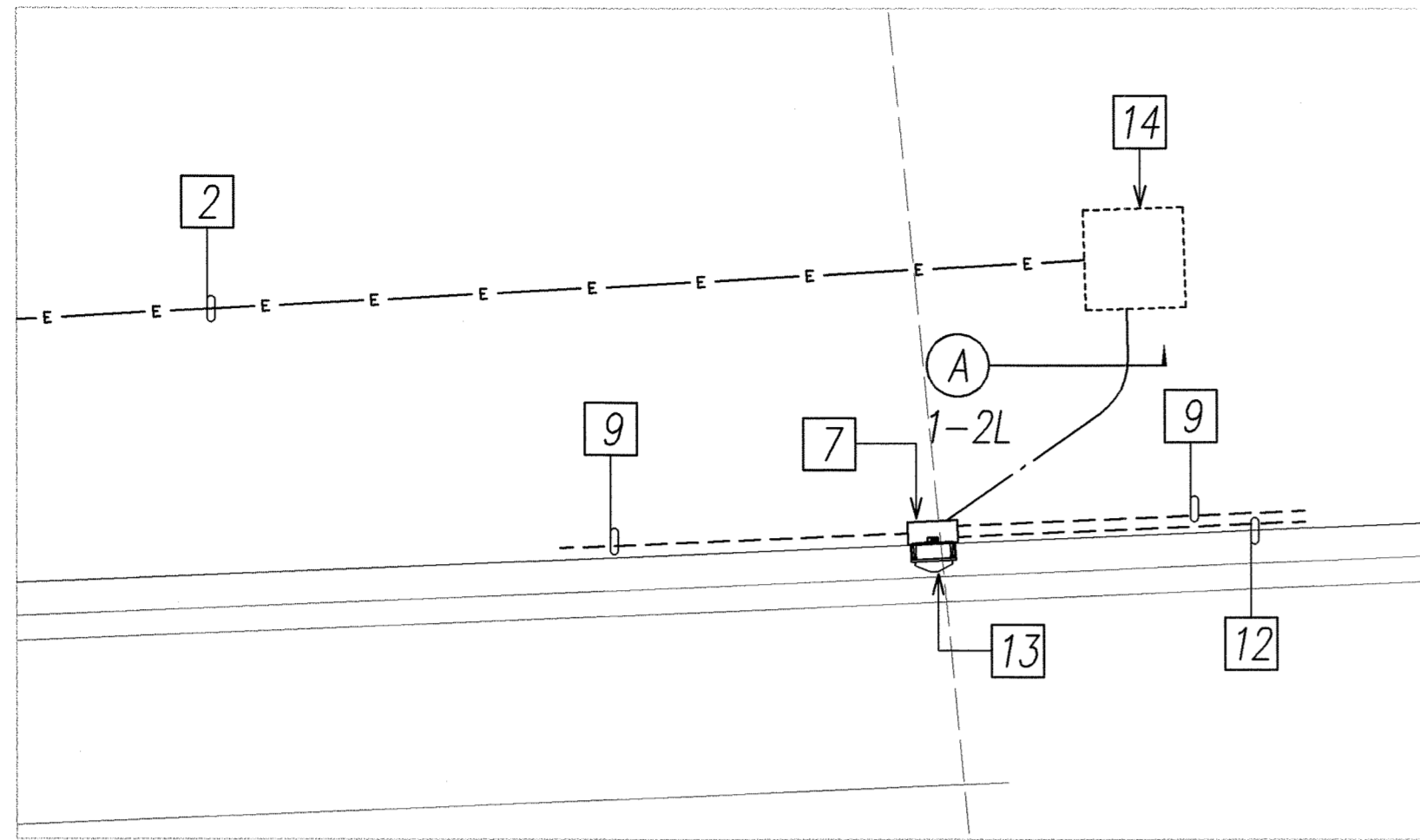
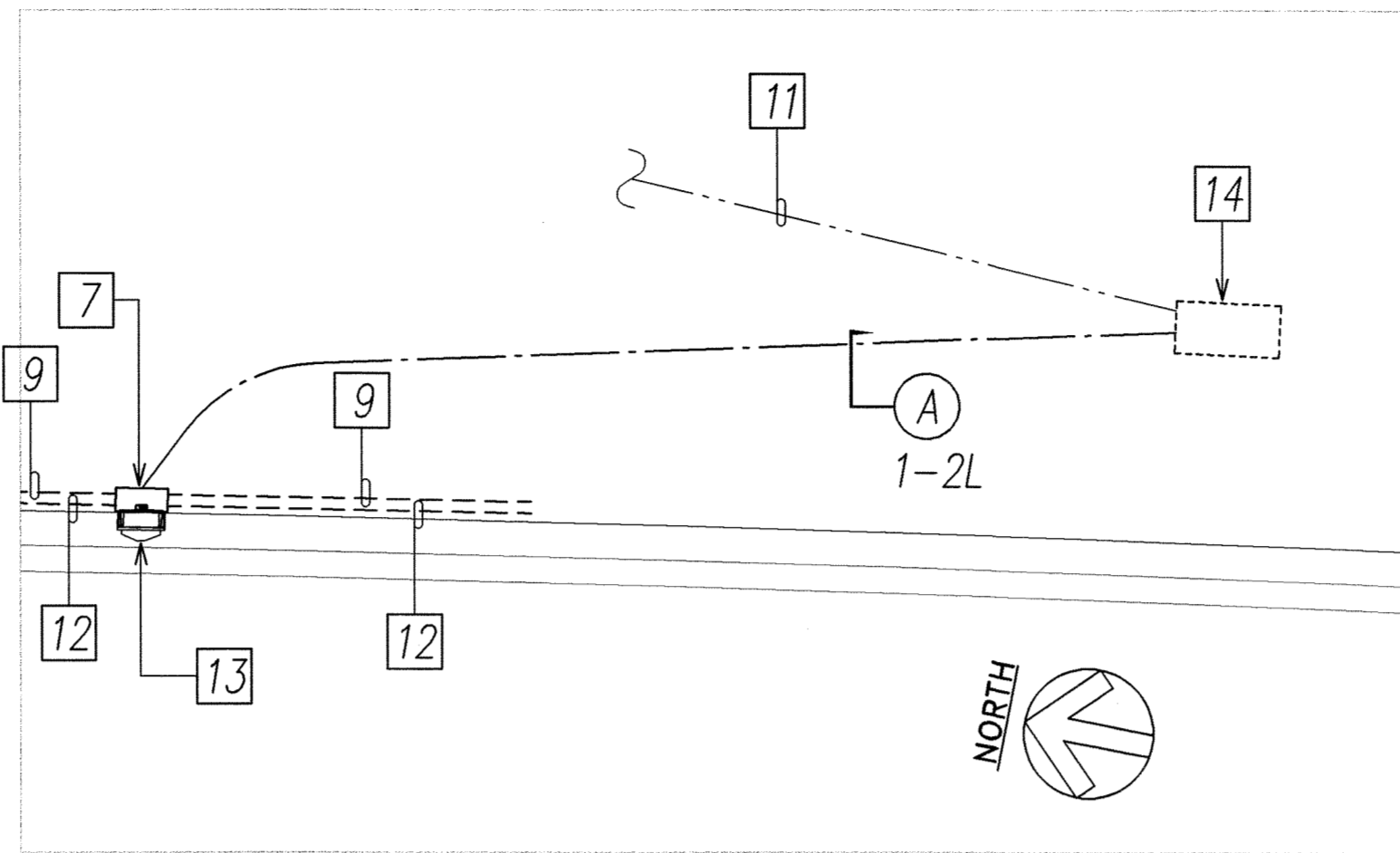


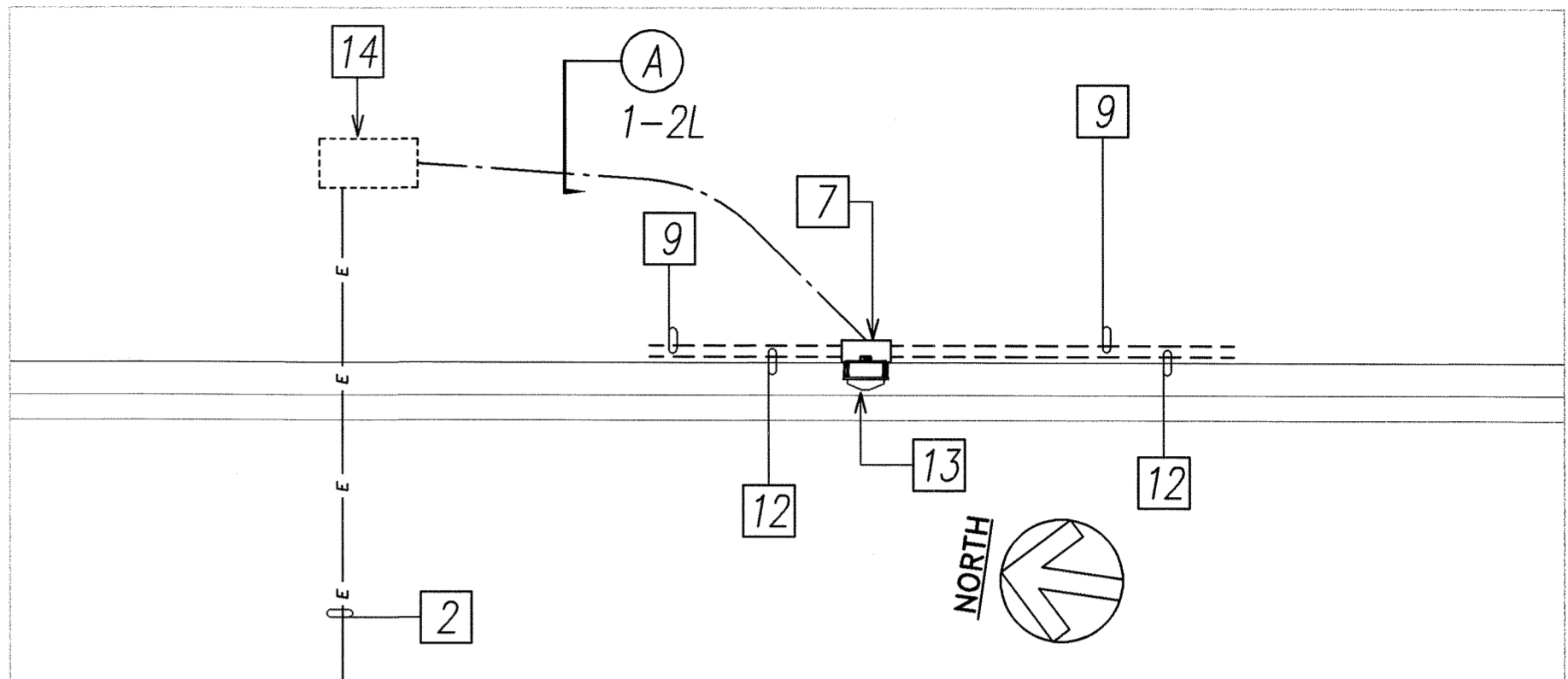
FED. ROAD DIST. NO.	STATE	PROJ. NO.	FISCAL YEAR	SHEET NO.	TOTAL SHEETS
HAWAII	HAW.	HWY-0-03-05M	2007	21	36



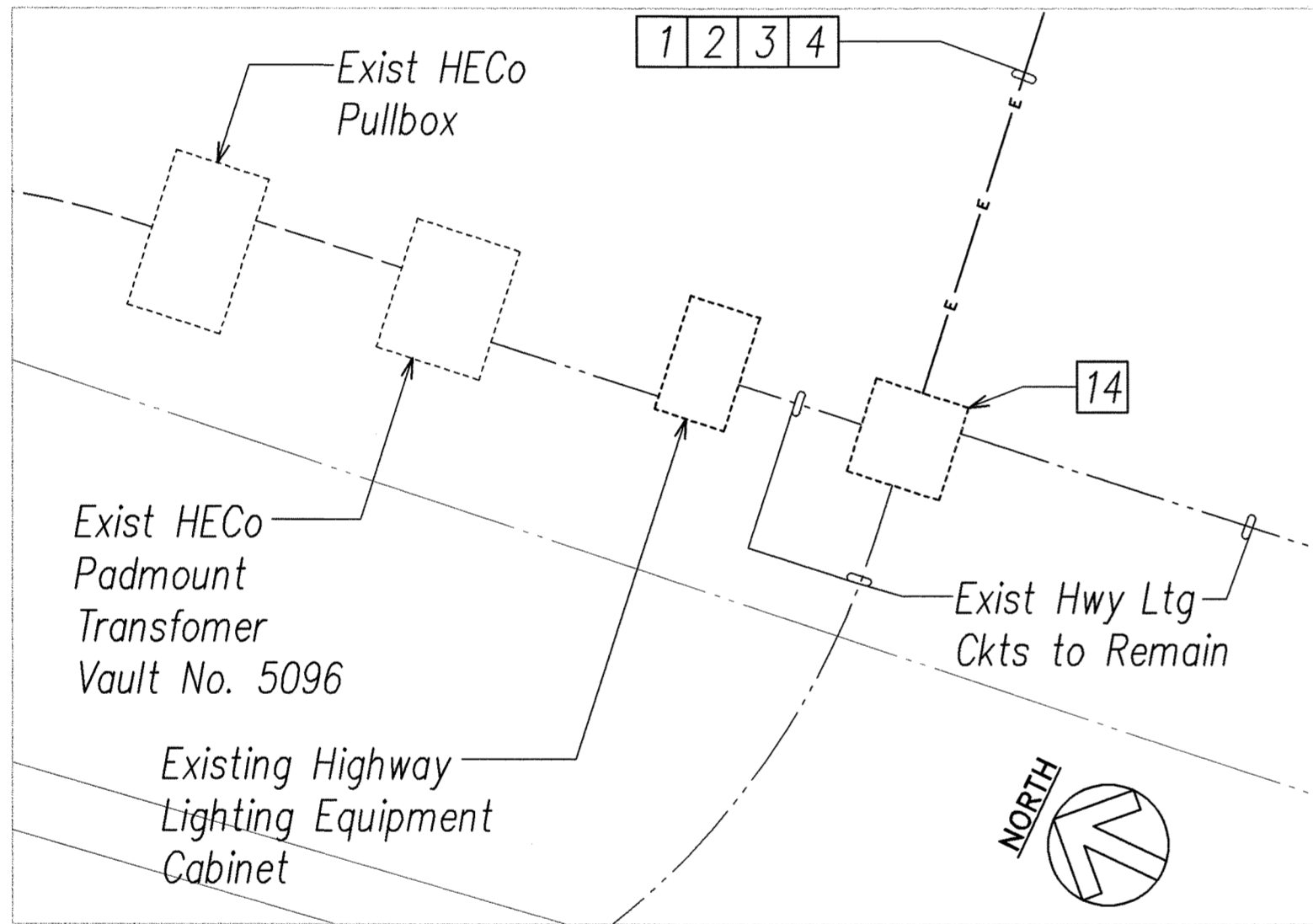
2  
E-20 ENLARGED ELECTRICAL PLAN "B"  
SCALE: 1"=5'



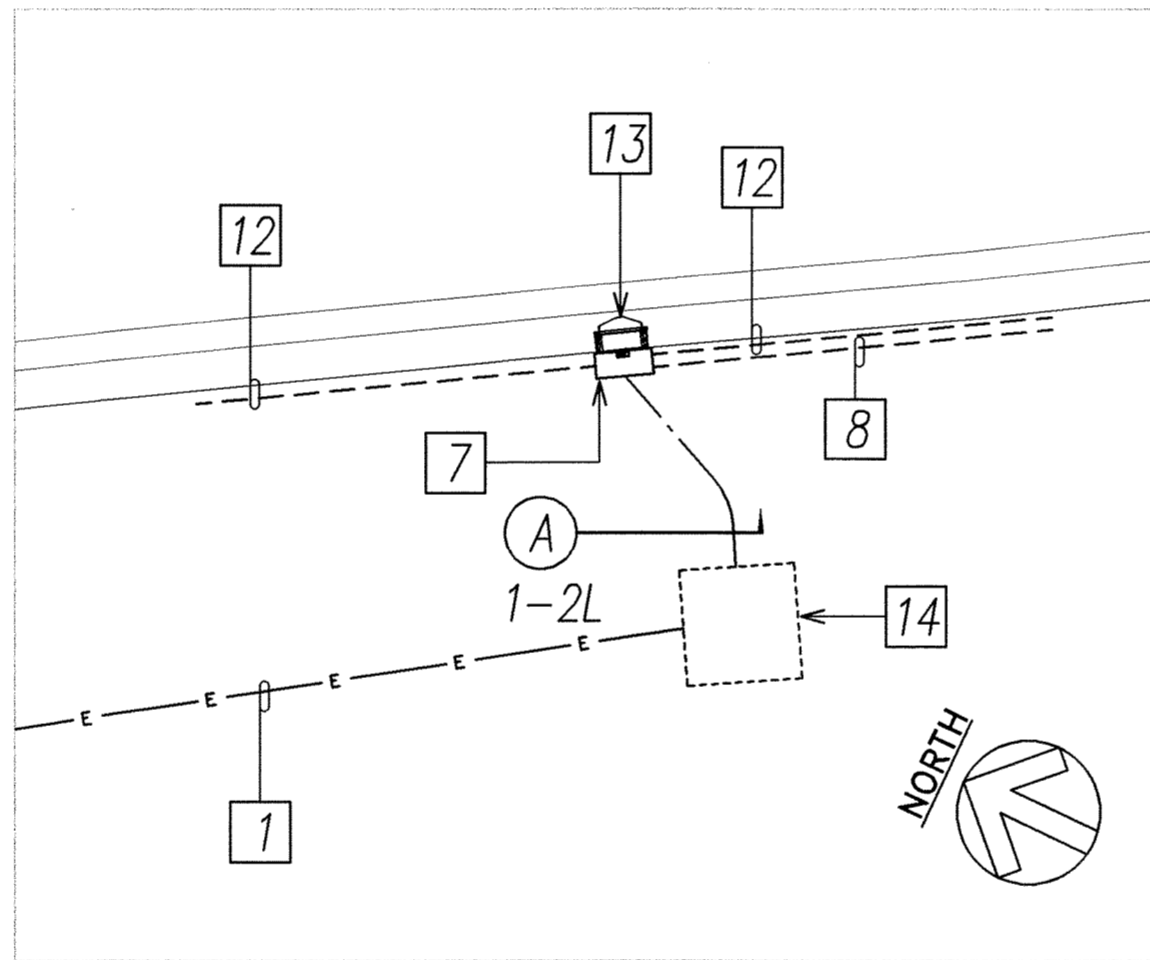
4  
E-20 ENLARGED ELECTRICAL PLAN "D"  
SCALE: 1"=5'



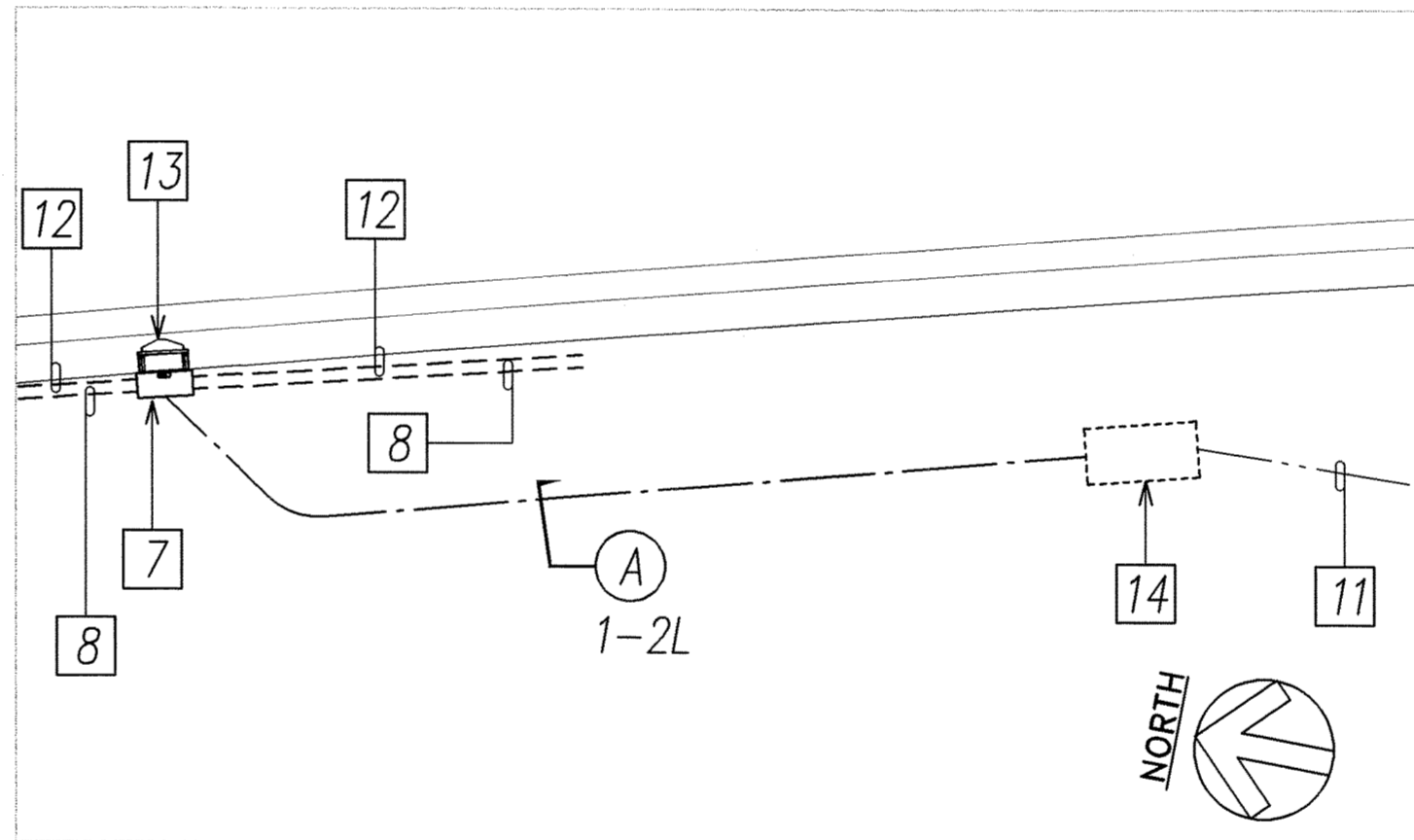
6  
E-20 ENLARGED ELECTRICAL PLAN "F"  
SCALE: 1"=5'



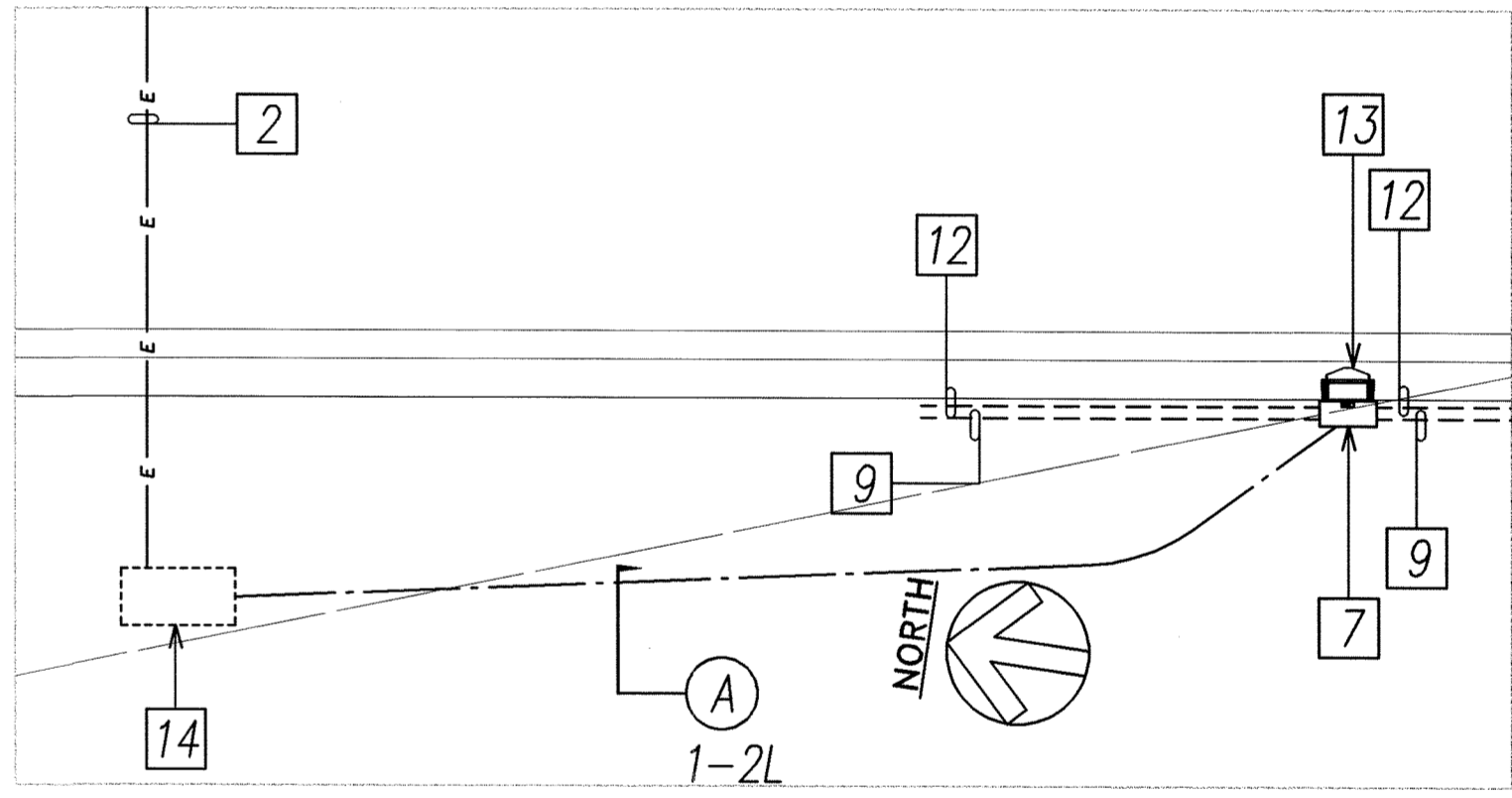
1  
E-20 ENLARGED ELECTRICAL PLAN "A"  
SCALE: 1"=5'



3  
E-20 ENLARGED ELECTRICAL PLAN "C"  
SCALE: 1"=5'



5  
E-20 ENLARGED ELECTRICAL PLAN "E"  
SCALE: 1"=5'



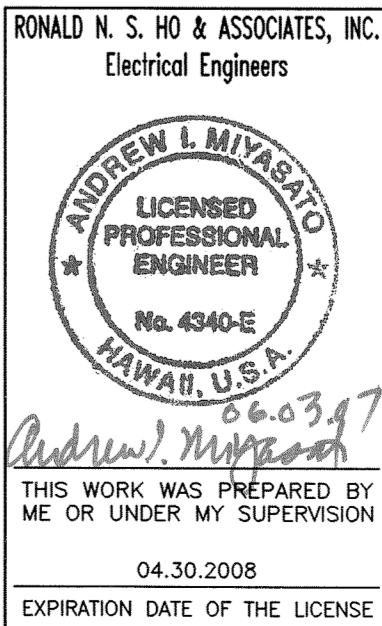
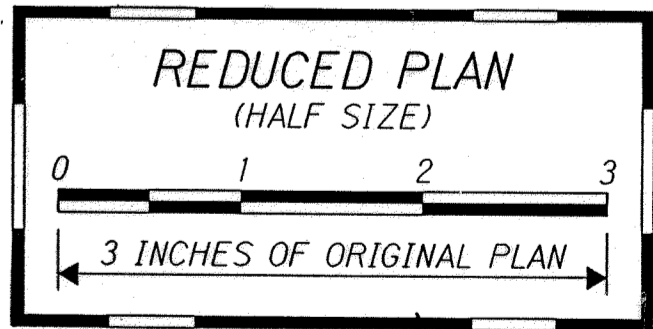
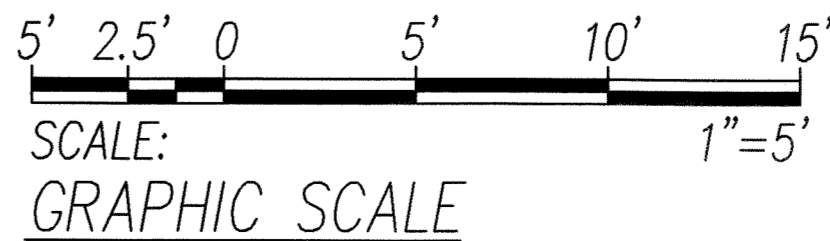
7  
E-20 ENLARGED ELECTRICAL PLAN "G"  
SCALE: 1"=5'

### NEW WORK PLAN NOTES

- 1 New Circuit No. 1: Existing 2" Conduit with New Conductors. See Existing Highway Lighting System Diagrams with Modifications on Sheets E-26 and E-27 for Conductor Sizes.
- 2 New Circuit No. 2: Existing 2" Conduit with New Conductors. See Existing Highway Lighting System Diagrams with Modifications on Sheets E-26 and E-27 for Conductor Sizes.
- 3 Existing Circuit No. 4 to Remain.
- 4 Existing Spare 2" Conduit.
- 5 Existing Highway Light Standard Circuit to be Reconnected to New Circuit in Existing Pullbox.
- 6 Existing Circuit No. 3 to Remain.

- 7 New Junction Box, 18" SQ. x 8"D, NEMA 4X, Type 315 Stainless Steel, with Tamperproof Screws to Secure Junction Box Cover; Mounted to Existing Concrete Barrier per Structural Details. See Structural Sheet S-1.
- 8 New Circuit NO. 1: New 2" Galvanized Rigid Steel Conduit with PVC Coating, to Adjacent Junction Box; Surface Mounted on Existing Concrete Barrier per Structural Details. See Structural Sheet S-1.
- 9 New Circuit NO. 2: New 2" Galvanized Rigid Steel Conduit with PVC Coating, to Adjacent Junction Box; Surface Mounted on Existing Concrete Barrier per Structural Details. See Structural Sheet S-1.
- 10 Provide Galvanized Rigid Steel Conduit to Liquidtite Flexible Metal Conduit Transition Across Existing Bridge Expansion Joint as Required to Allow for Movement of Bridge Structure Without Damaging Conduit Installation.

- 11 Existing Highway Sign Light Circuit to Remain and be Reconnected to New Lighting Circuit, to Maintain Existing Circuit Continuity.
- 12 New 3/4" Galvanized Rigid Steel Conduit with PVC Coating, to Adjacent Low Level Highway Light Fixture; Surface Mounted on Existing Concrete Barrier per Structural Details. See Structural Sheet S-1.
- 13 New Low Level Highway Light Fixture; Mounted on Top of Existing Concrete Barrier.
- 14 Existing Highway Lighting Concrete Pullbox.



### ENLARGED ELECTRICAL PLANS

H-2 RAIL LIGHT REPLACEMENT,  
VICINITY OF WAHIAWA OFF RAMP

Project No. HWY-0-03-05M  
Scale: AS NOTED Date: JUNE 2007  
SHEET No. E-20 OF 35 SHEETS