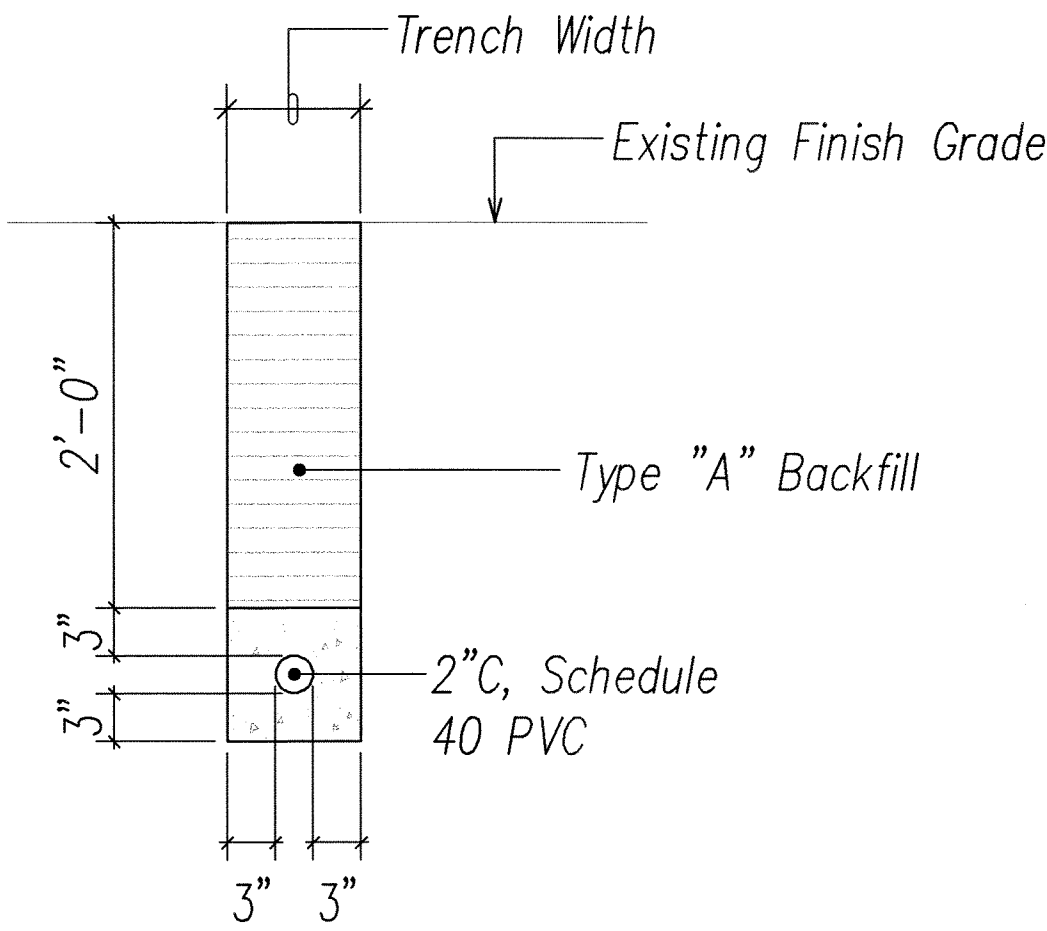


FED. ROAD DIST. NO.	STATE	PROJ. NO.	FISCAL YEAR	SHEET NO.	TOTAL SHEETS
HAWAII	HAW.	HWY-0-03-05M	2007	22	36

DUCT SECTION BACKFILL NOTES

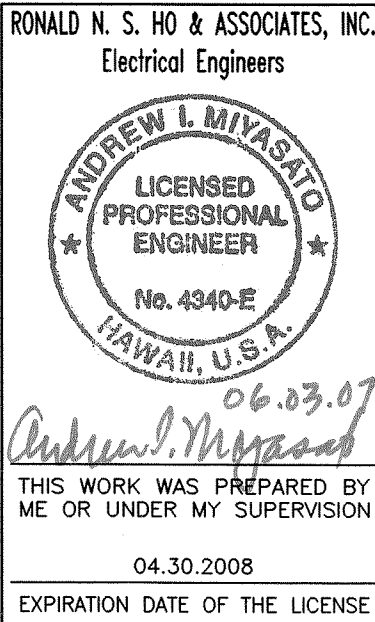
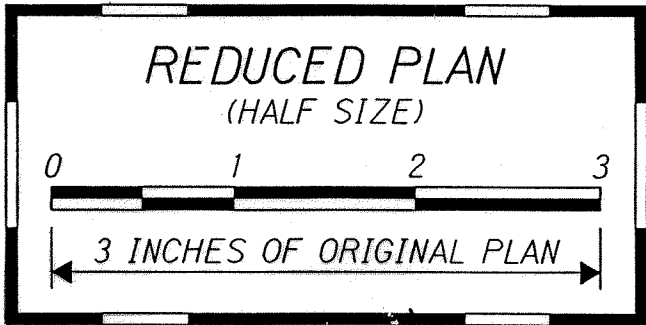
- Trench Backfill Material "A" Beach Sand, Earth or Earth and Gravel; If Earth and Gravel Used, Rock Size to be 1" Maximum and the Mixture Shall Contain Not More Than 50% by Volume of Rock Particles; Maximum 8" Loose Fill per Lift; Obtain 95% Compaction for Each Lift.
- Trench Backfill Material "B" Beach Sand, Earth or Earth and Gravel; If Earth and Gravel Used, Mixture Must Pass a 1/2" Mesh Screen and Shall Contain Not More Than 20% by Volume of Rock Particles; Maximum 8" Loose Fill per Lift; Obtain 95% Compaction for Each Lift.
- If Material Below Duct is Not Equivalent to Backfill Material "B", Excavate Material & Provide 3" Backfill Material "B", See Above
- Concrete - 3" Encasement, 3000 PSI Compressive Strength at 3 Days



DUCT SECTION DETAILS
NOT TO SCALE

SURVEY PLOTTED BY	DATE
DRAWN BY	" "
PROPOSED BY	" "
DESIGNED BY	" "
QUANTITIES BY	" "
CHECKED BY	" "
No.	

LAST SAVE: 06/03/07 06:05:15 PM HWY-03-05M-DUCT SECTION DETAILS
Z:\AEC\PROJECTS\2006\03\HWY-03-05M-DUCT SECTION DETAILS



STATE OF HAWAII
DEPARTMENT OF TRANSPORTATION
HIGHWAYS DIVISION
DUCT SECTION DETAILS

H-2 RAIL LIGHT REPLACEMENT,
VICINITY OF WAHIAWA OFF RAMP

Project No. HWY-0-03-05M
Scale: AS NOTED Date: JUNE 2007
SHEET No. E-21 OF 35 SHEETS