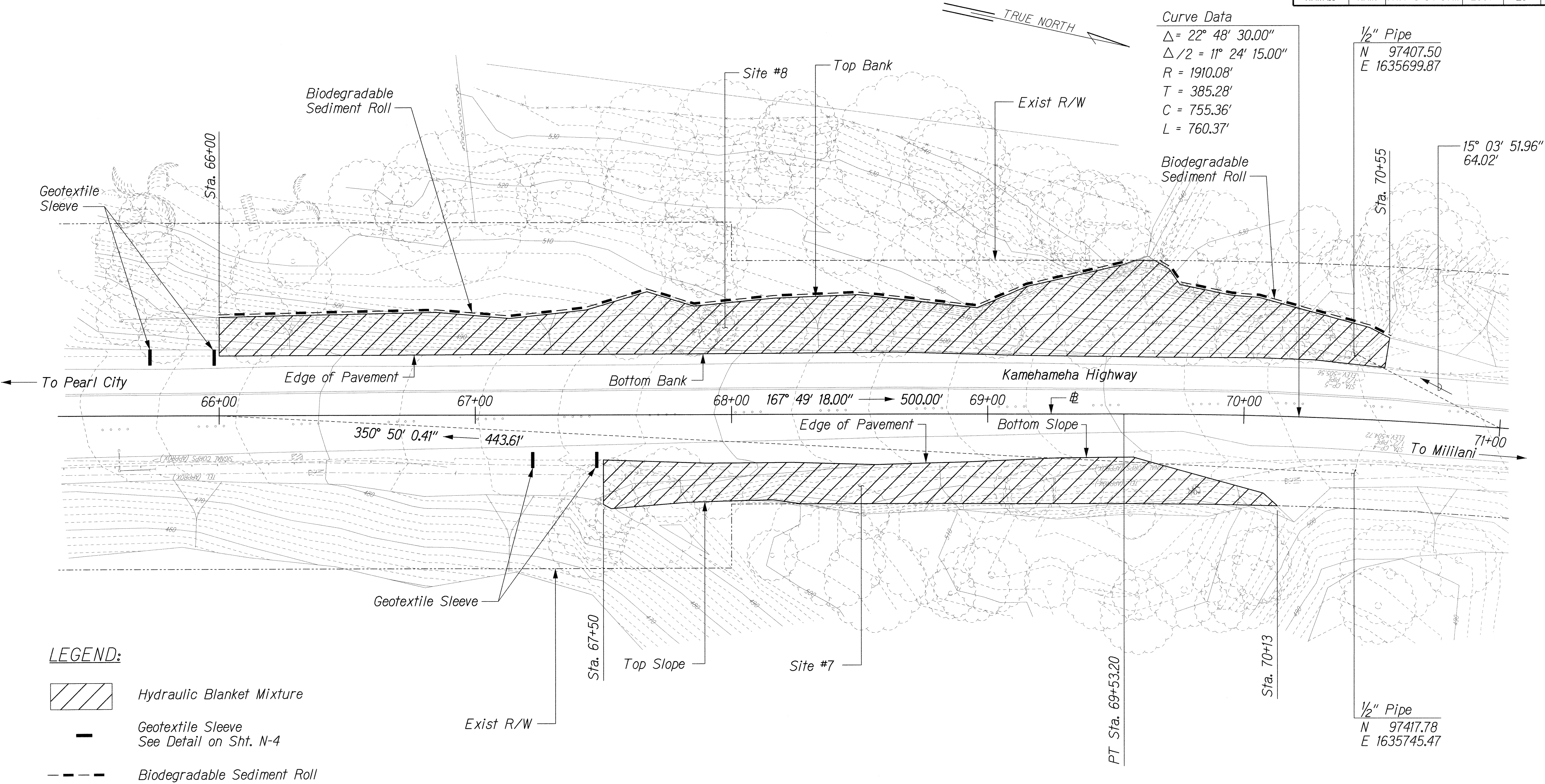


FED. ROAD DIST. NO.	STATE	PROJ. NO.	FISCAL YEAR	SHEET NO.	TOTAL SHEETS
HAWAII	HAW.	HWY-0-04-07M	2007	20	57



LEGEND:

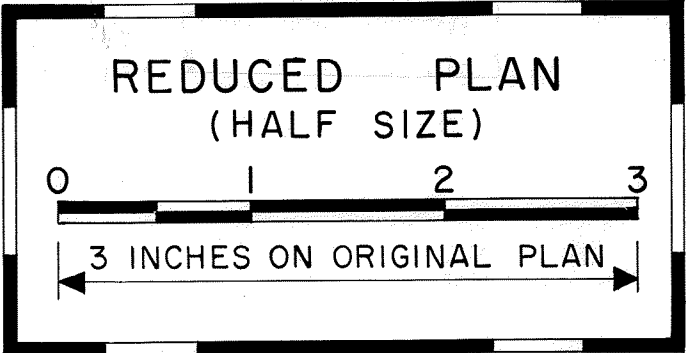
- Hydraulic Blanket Mixture
- Geotextile Sleeve
See Detail on Sht. N-4
- Biodegradable Sediment Roll

NOTE:

Existing vegetation coverage may vary at time of construction. Contractor shall apply hydraulic blanket mixture on areas with no vegetation or as directed by the Engineer. Existing trees and vegetation shall remain unless otherwise directed by the Engineer for removal.

ORIGINAL PLAN	SURVEY PLOTTED BY	DATE
DRAWN BY		
DESIGNED BY		
CHECKED BY		
DATE		

J:\SSWMP - PSE2.10 SITES\EC\2007\EC 746.dgn



THIS WORK WAS PREPARED BY ME OR UNDER MY SUPERVISION.
SIGNATURE: *[Signature]* EXPIRATION DATE OF THE LICENSE: 6-30-08

STATE OF HAWAII
DEPARTMENT OF TRANSPORTATION
HIGHWAYS DIVISION

EROSION CONTROL PLAN
KAMEHAMEHA HWY. - SITES #7 & #8

SLOPE MAINTENANCE FOR EROSION CONTROL
AT VARIOUS SITES ON OAHU, PHASE 2
Project No. HWY-0-04-07M

Scale: 1"=20' Date: April 2007

SHEET No. E-9 OF 21 SHEETS