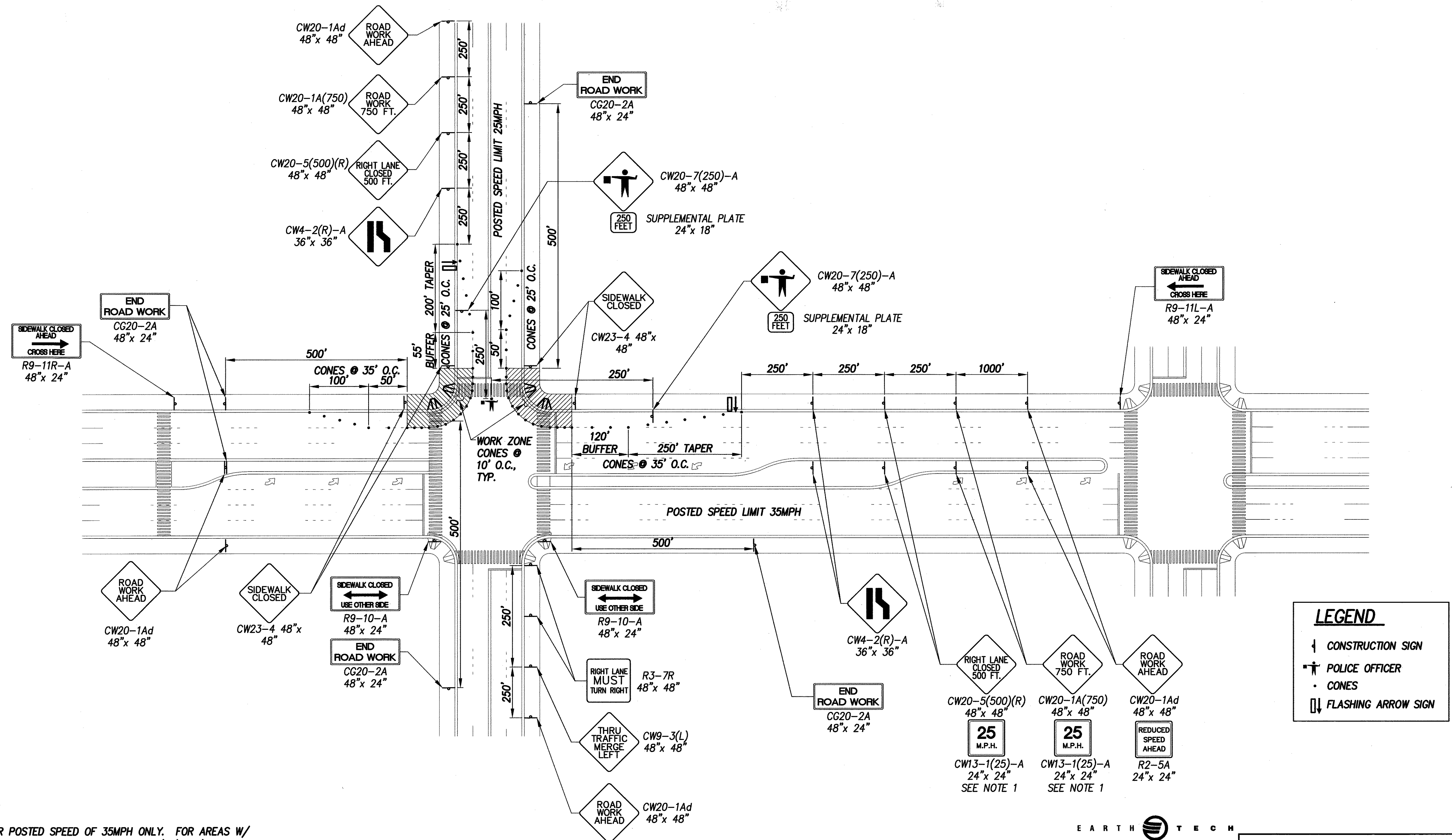


FED. ROAD DIST. NO.	STATE	FEDERAL AID PROJ. NO.	FISCAL YEAR	SHEET NO.	TOTAL SHEETS
HAWAII	HAW.	CMAQ-0300(99)	2004	135	180



NOTES:

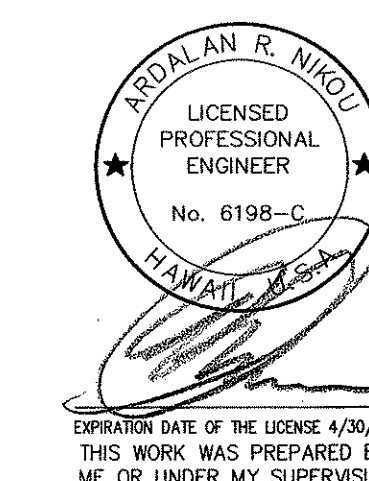
1. FOR POSTED SPEED OF 35MPH ONLY. FOR AREAS W/
POSTED SPEED OF 45MPH, USE CW13-1(35)-A (35MPH
CONSTRUCTION ZONE SPEED LIMIT)
2. SIGN SPACING, TAPER AND BUFFER LENGTHS SHALL BE
IN ACCORDANCE TO EITHER THE STD. SPEC. SECTION 645,
STATE OF HAWAII DEPT. OF TRANSPORTATION, HIGHWAYS
DIVISION OR THE MANUAL ON UNIFORM TRAFFIC CONTROL
DEVICES (MUTCD), 2000 ED. THE CONTRACTOR SHALL APPLY
THE STRICTER OF THE TWO.

TRAFFIC CONTROL PLAN - CROSS INTERSECTION, DIVIDED HWY. - PHASE 1

SCALE: NTS

EARTH TECH

A Tyco Infrastructure Services Company
841 Bishop Street, Suite 500
Honolulu, HI 96813



STATE OF HAWAII
DEPARTMENT OF TRANSPORTATION
HIGHWAYS DIVISION

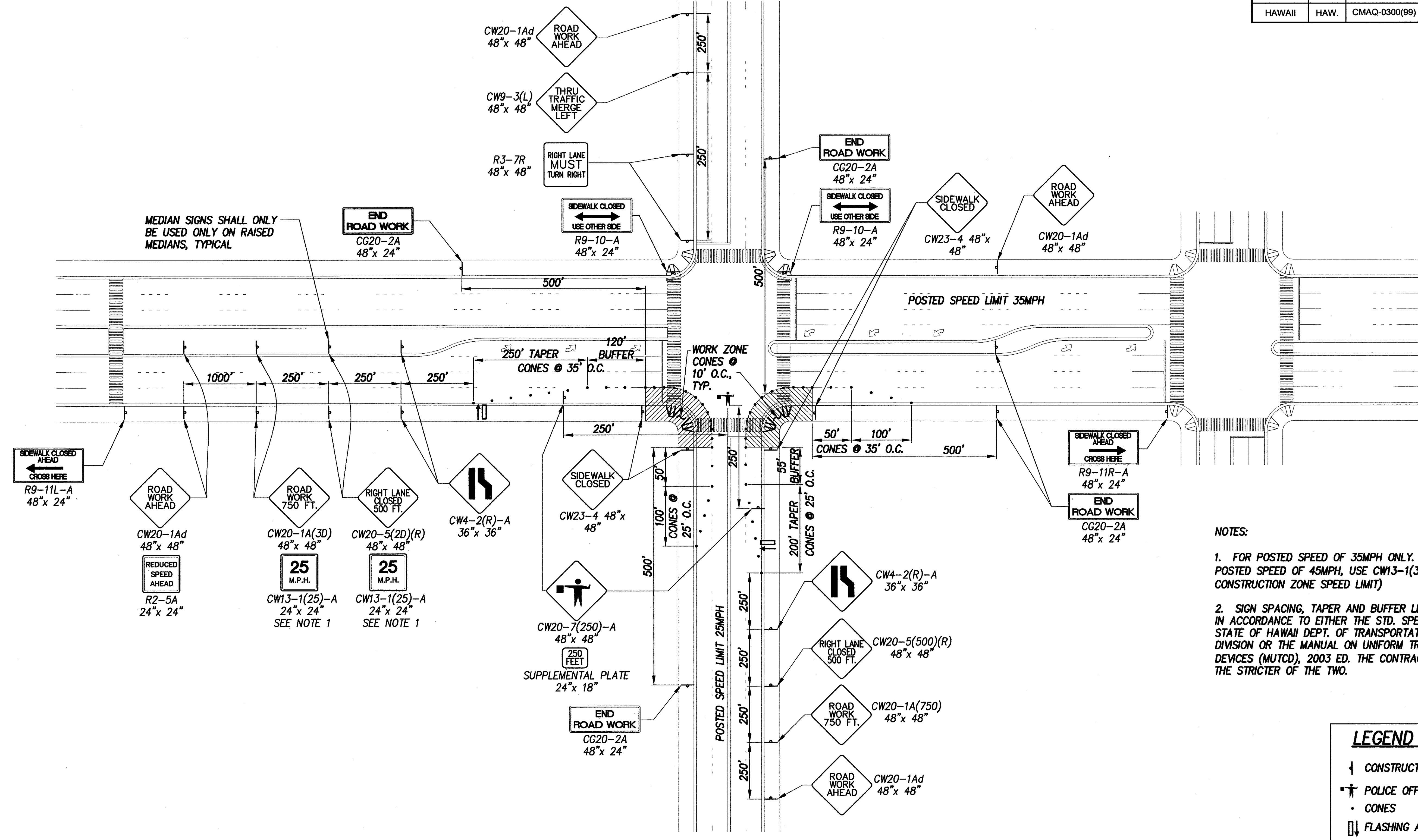
TYPICAL TRAFFIC
CONTROL PLAN - 1

Pedestrian Facilities & ADA Compliance
at Various Locations on Oahu, Unit 8
Fed. Aid Proj. No. CMAQ-0300(99)

Scale: As Noted Date: August 2004

SHEET No. C-134 OF 139 SHEETS

FED. ROAD DIST. NO.	STATE	FEDERAL AID PROJ. NO.	FISCAL YEAR	SHEET NO.	TOTAL SHEETS
HAWAII	HAW.	CMAQ-0300(99)	2004	136	180



- NOTES:
1. FOR POSTED SPEED OF 35MPH ONLY. FOR AREAS W/ POSTED SPEED OF 45MPH, USE CW13-1(35)-A (35MPH CONSTRUCTION ZONE SPEED LIMIT)
 2. SIGN SPACING, TAPER AND BUFFER LENGTHS SHALL BE IN ACCORDANCE TO EITHER THE STD. SPEC. SECTION 645, STATE OF HAWAII DEPT. OF TRANSPORTATION, HIGHWAYS DIVISION OR THE MANUAL ON UNIFORM TRAFFIC CONTROL DEVICES (MUTCD), 2003 ED. THE CONTRACTOR SHALL APPLY THE STRICTER OF THE TWO.

LEGEND

- ↓ CONSTRUCTION SIGN
- POLICE OFFICER
- CONES
- ↕ FLASHING ARROW SIGN

EARTH TECH
 A Tyco Infrastructure Services Company
 841 Bishop Street, Suite 500
 Honolulu, HI 96813

ARONIAN R. NIKOU
 LICENSED PROFESSIONAL ENGINEER
 No. 6198-C
 HAWAII, U.S.A.

EXPIRATION DATE OF THE LICENSE 4/30/2006
 THIS WORK WAS PREPARED BY ME OR UNDER MY SUPERVISION.

STATE OF HAWAII
 DEPARTMENT OF TRANSPORTATION
 HIGHWAYS DIVISION

TYPICAL TRAFFIC CONTROL PLAN - 2
Pedestrian Facilities & ADA Compliance at Various Locations on Oahu, Unit 8 Fed. Aid Proj. No. CMAQ-0300(99)

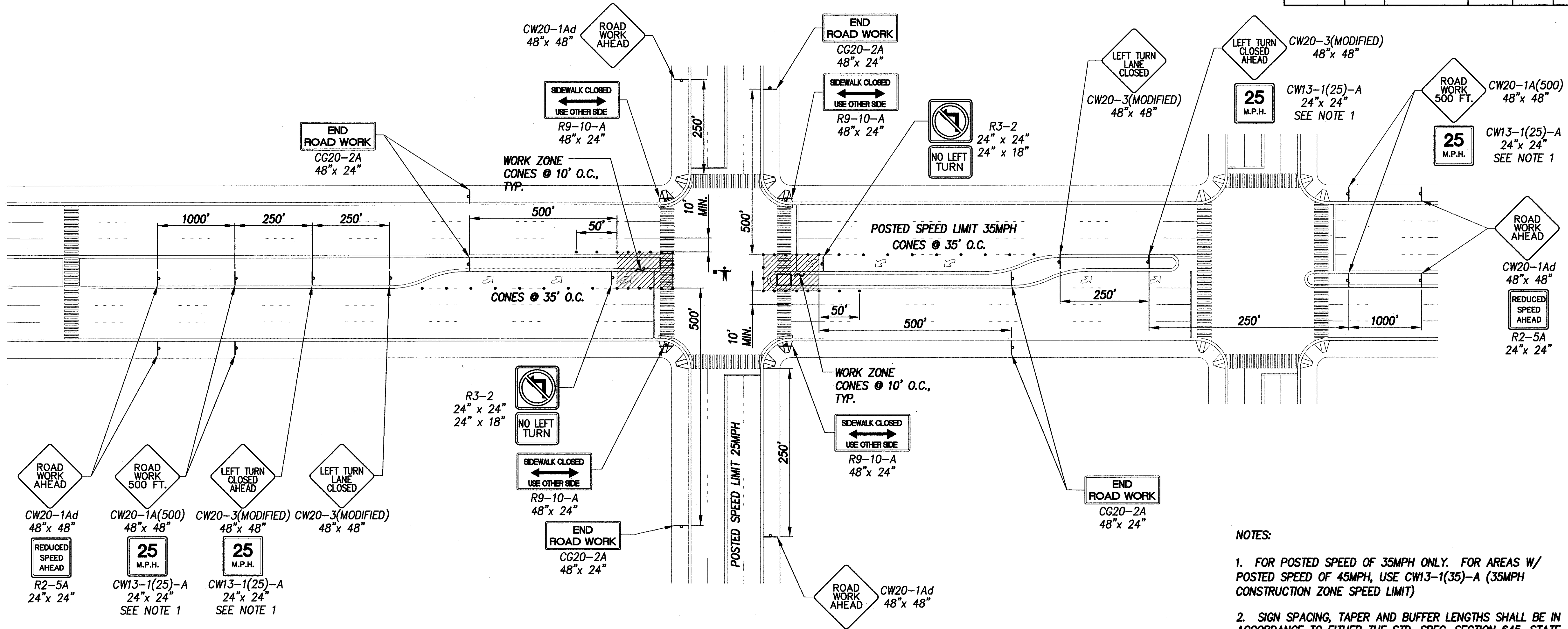
Scale: As Noted Date: August 2004

SHEET No. C-135 OF 139 SHEETS

TRAFFIC CONTROL PLAN - CROSS INTERSECTION, DIVIDED HWY. - PHASE 2
 SCALE: NTS

SURVEY PLOTTED BY	DATE
DRAWN BY	
DESIGNED BY	
QUANTITIES BY	
CHECKED BY	
ORIGINAL PLAN	
NOTE BOOK	
No.	

FED. ROAD DIST. NO.	STATE	FEDERAL AID PROJ. NO.	FISCAL YEAR	SHEET NO.	TOTAL SHEETS
HAWAII	HAW.	CMAQ-0300(99)	2004	137	180



- NOTES:
- FOR POSTED SPEED OF 35MPH ONLY. FOR AREAS W/ POSTED SPEED OF 45MPH, USE CW13-1(35)-A (35MPH CONSTRUCTION ZONE SPEED LIMIT)
 - SIGN SPACING, TAPER AND BUFFER LENGTHS SHALL BE IN ACCORDANCE TO EITHER THE STD. SPEC. SECTION 645, STATE OF HAWAII DEPT. OF TRANSPORTATION, HIGHWAYS DIVISION OR THE MANUAL ON UNIFORM TRAFFIC CONTROL DEVICES (MUTCD), 2003 ED. THE CONTRACTOR SHALL APPLY THE STRICTER OF THE TWO.

TRAFFIC CONTROL PLAN – CROSS INTERSECTION, DIVIDED HWY. – PHASE 3
SCALE: NTS

LEGEND

- ↓ CONSTRUCTION SIGN
- ★ POLICE OFFICER
- CONES
- ⬇ FLASHING ARROW SIGN

SURVEY PLOTTED BY	DATE
DRAWN BY	
DESIGNED BY	
QUANTITIES BY	
CHECKED BY	
ORIGINAL PLAN	
NOTE BOOK	
NO.	

EARTH TECH

A Tyco Infrastructure Services Company

841 Bishop Street, Suite 500

Honolulu, HI 96813

ARULAN R. NIKOU

LICENSED PROFESSIONAL ENGINEER

No. 6198-C

HAWAII

EXPIRATION DATE OF THE LICENSE 4/30/2006

THIS WORK WAS PREPARED BY ME OR UNDER MY SUPERVISION.

STATE OF HAWAII

DEPARTMENT OF TRANSPORTATION

HIGHWAYS DIVISION

TYPICAL TRAFFIC CONTROL PLAN – 3

Pedestrian Facilities & ADA Compliance at Various Locations on Oahu, Unit 8

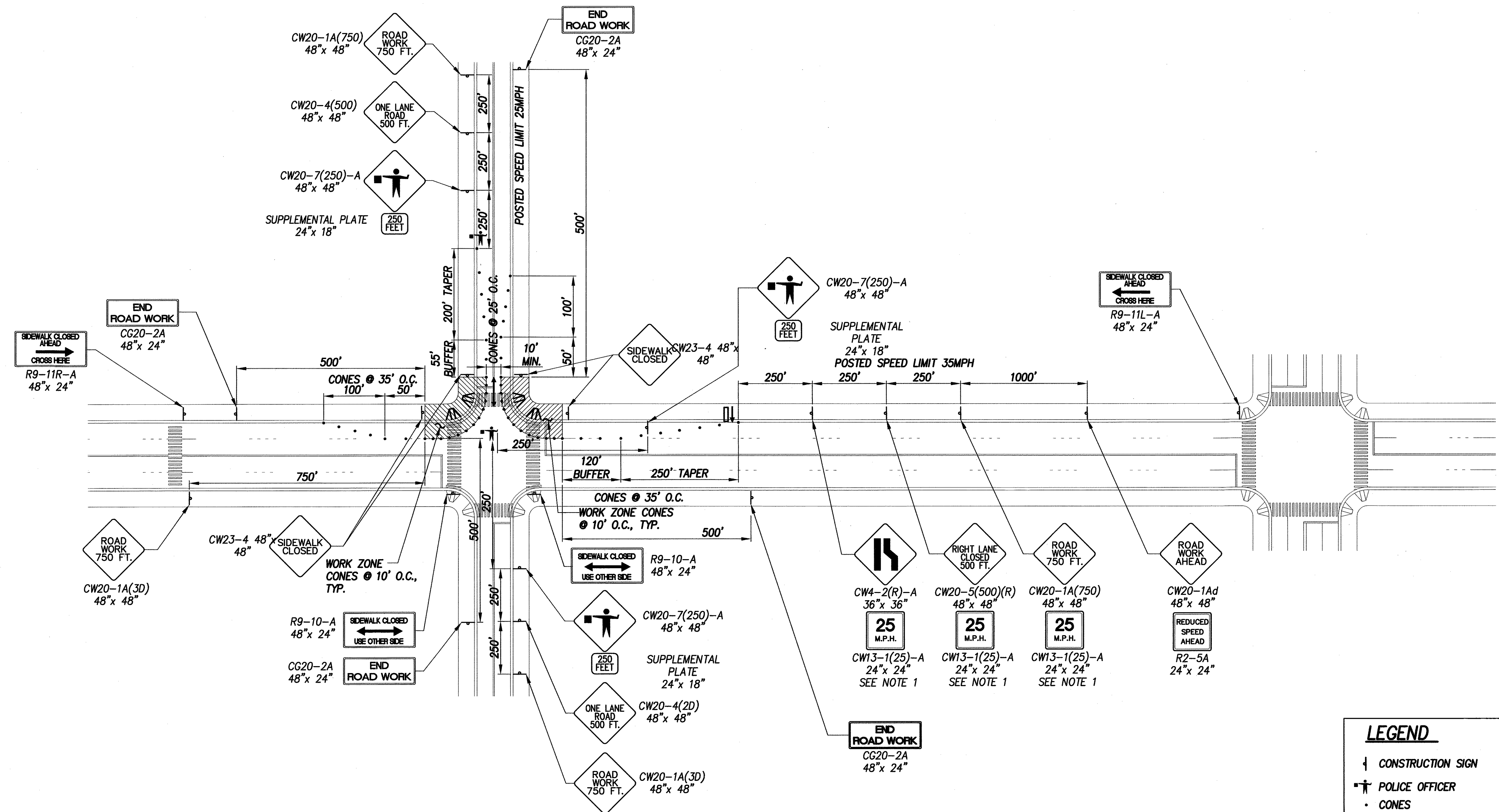
Fed. Aid Proj. No. CMAQ-0300(99)

Scale: As Noted

Date: August 2004

SHEET No. C-136 OF 139 SHEETS

FED. ROAD DIST. NO.	STATE	FEDERAL AID PROJ. NO.	FISCAL YEAR	SHEET NO.	TOTAL SHEETS
HAWAII	HAW.	CMAQ-0300(99)	2004	138	180



TRAFFIC CONTROL PLAN - CROSS INTERSECTION, UNDIVIDED HWY. - PHASE 1
SCALE: NTS

- NOTES:
1. FOR POSTED SPEED OF 35MPH ONLY. FOR AREAS W/ POSTED SPEED OF 45MPH, USE CW13-1(35)-A (35MPH CONSTRUCTION ZONE SPEED LIMIT)
 2. SIGN SPACING, TAPER AND BUFFER LENGTHS SHALL BE IN ACCORDANCE TO EITHER THE STD. SPEC. SECTION 645, STATE OF HAWAII DEPT. OF TRANSPORTATION, HIGHWAYS DIVISION OR THE MANUAL ON UNIFORM TRAFFIC CONTROL DEVICES (MUTCD), 2003 ED. THE CONTRACTOR SHALL APPLY THE STRICTER OF THE TWO.

EARTH TECH
A Tyco Infrastructure Services Company
841 Bishop Street, Suite 500
Honolulu, HI 96813

AROLAN R. NIQU
LICENSED PROFESSIONAL ENGINEER
No. 6198-C
HAWAII

EXPIRATION DATE OF THE LICENSE: 4/30/2006
THIS WORK WAS PREPARED BY ME OR UNDER MY SUPERVISION.

LEGEND

- ↓ CONSTRUCTION SIGN
- ★ POLICE OFFICER
- CONES
- ⇅ FLASHING ARROW SIGN

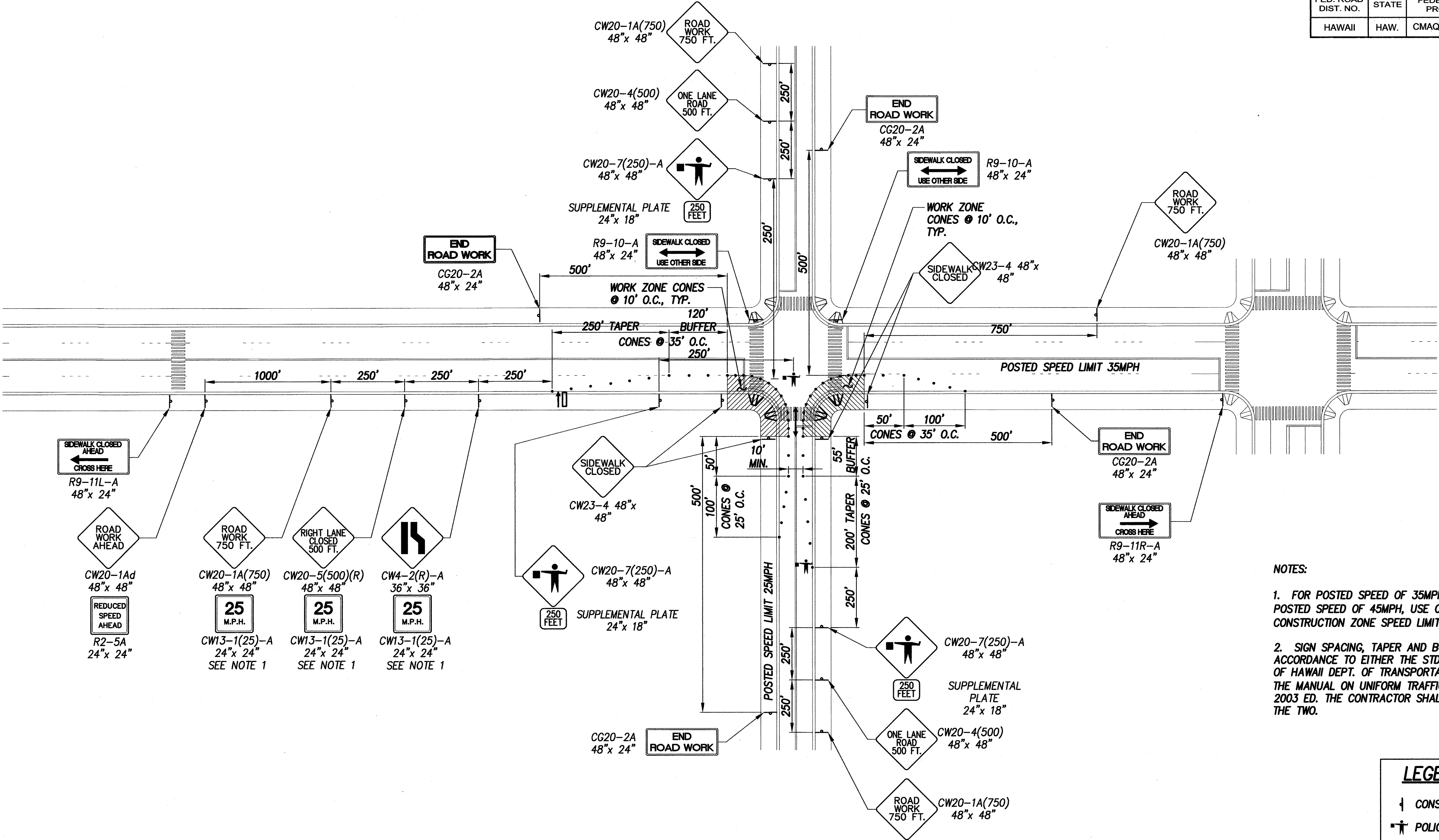
STATE OF HAWAII
DEPARTMENT OF TRANSPORTATION
HIGHWAYS DIVISION

TYPICAL TRAFFIC CONTROL PLAN - 4
Pedestrian Facilities & ADA Compliance at Various Locations on Oahu, Unit 8
Fed. Aid Proj. No. CMAQ-0300(99)

Scale: As Noted Date: August 2004
SHEET No. C-137 OF 139 SHEETS

SURVEY PLOTTED BY	DATE
DESIGNED BY	
TRACED BY	
NOTE BOOK	
QUANTITIES BY	
CHECKED BY	
ORIGINAL PLAN	
No.	

FED. ROAD DIST. NO.	STATE	FEDERAL AID PROJ. NO.	FISCAL YEAR	SHEET NO.	TOTAL SHEETS
HAWAII	HAW.	CMAQ-0300(99)	2004	139	180



- NOTES:
- FOR POSTED SPEED OF 35MPH ONLY. FOR AREAS W/ POSTED SPEED OF 45MPH, USE CW13-1(35)-A (35MPH CONSTRUCTION ZONE SPEED LIMIT)
 - SIGN SPACING, TAPER AND BUFFER LENGTHS SHALL BE IN ACCORDANCE TO EITHER THE STD. SPEC. SECTION 645, STATE OF HAWAII DEPT. OF TRANSPORTATION, HIGHWAYS DIVISION OR THE MANUAL ON UNIFORM TRAFFIC CONTROL DEVICES (MUTCD), 2003 ED. THE CONTRACTOR SHALL APPLY THE STRICTER OF THE TWO.

LEGEND

- ↓ CONSTRUCTION SIGN
- ★ POLICE OFFICER
- CONES
- ⇄ FLASHING ARROW SIGN

TRAFFIC CONTROL PLAN – CROSS INTERSECTION, UNDIVIDED HWY. – PHASE 2

SCALE: NTS

SURVEY PLOTTED BY	DATE
DESIGNED BY	
TRACED BY	
DESIGNED BY	
QUANTITIES BY	
CHECKED BY	
ORIGINAL PLAN	
NOTE BOOK	
No.	

EARTH TECH

A Tyco Infrastructure Services Company
841 Bishop Street, Suite 500
Honolulu, HI 96813

ARULAN R. NIKU
LICENSED PROFESSIONAL ENGINEER
No. 6198-C
HAWAII

EXPIRATION DATE OF THE LICENSE 4/30/2006
THIS WORK WAS PREPARED BY ME OR UNDER MY SUPERVISION.

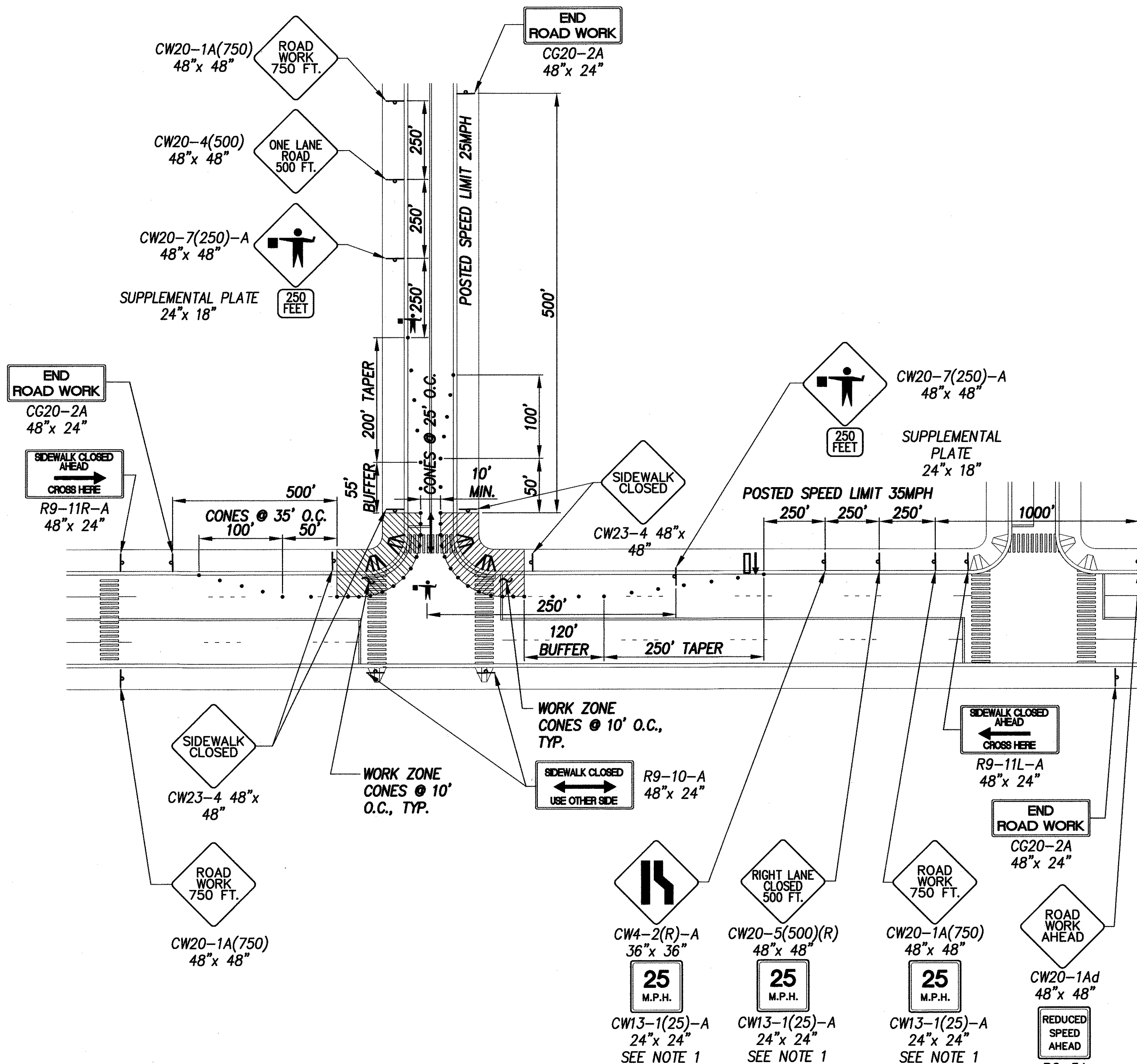
STATE OF HAWAII
DEPARTMENT OF TRANSPORTATION
HIGHWAYS DIVISION

TYPICAL TRAFFIC CONTROL PLAN – 5
Pedestrian Facilities & ADA Compliance at Various Locations on Oahu, Unit 8 Fed. Aid Proj. No. CMAQ-0300(99)

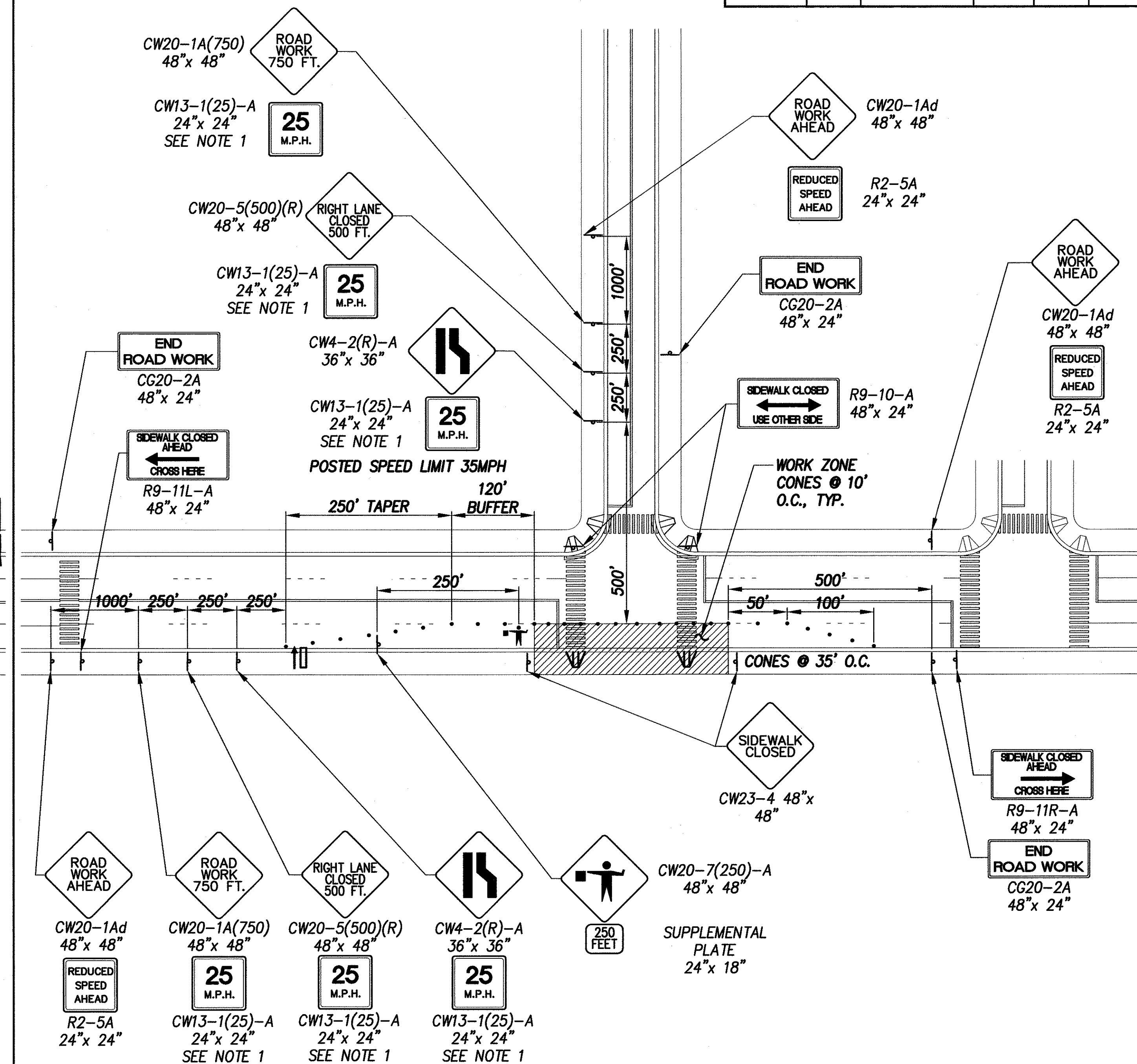
Scale: As Noted Date: August 2004

SHEET No. C-138 OF 139 SHEETS

FED. ROAD DIST. NO.	STATE	FEDERAL AID PROJ. NO.	FISCAL YEAR	SHEET NO.	TOTAL SHEETS
HAWAII	HAW.	CMAQ-0300(99)	2004	140	180



TRAFFIC CONTROL PLAN - TEE INTERSECTION, UNDIVIDED HWY. - PHASE 1
SCALE: NTS



TRAFFIC CONTROL PLAN - TEE INTERSECTION, UNDIVIDED HWY. - PHASE 2
SCALE: NTS

DATE	_____
DESIGNED BY	_____
CHECKED BY	_____
NOTED BY	_____
ORIGINAL PLAN	_____
NO.	_____

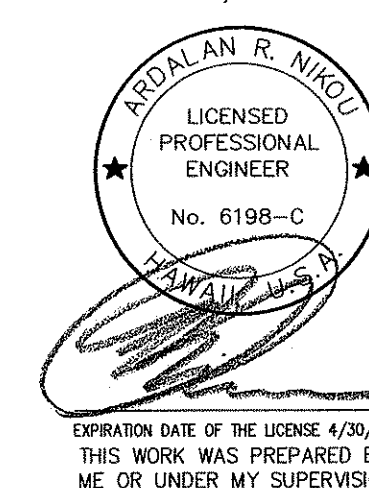
LEGEND
↓ CONSTRUCTION SIGN
★ POLICE OFFICER
• CONES
⇅ FLASHING ARROW SIGN

NOTES:

- FOR POSTED SPEED OF 35MPH ONLY. FOR AREAS W/ POSTED SPEED OF 45MPH, USE CW13-1(35)-A (35MPH CONSTRUCTION ZONE SPEED LIMIT)
- SIGN SPACING, TAPER AND BUFFER LENGTHS SHALL BE IN ACCORDANCE TO EITHER THE STD. SPEC. SECTION 645, STATE OF HAWAII DEPT. OF TRANSPORTATION, HIGHWAYS DIVISION OR THE MANUAL ON UNIFORM TRAFFIC CONTROL DEVICES (MUTCD), 2003 ED. THE CONTRACTOR SHALL APPLY THE STRICTER OF THE TWO.

EARTH TECH

A Tycos Infrastructure Services Company
841 Bishop Street, Suite 500
Honolulu, HI 96813



STATE OF HAWAII
DEPARTMENT OF TRANSPORTATION
HIGHWAYS DIVISION

TYPICAL TRAFFIC CONTROL PLAN - 6
Pedestrian Facilities & ADA Compliance at Various Locations on Oahu, Unit 8 Fed. Aid Proj. No. CMAQ-0300(99)

Scale: As Noted Date: August 2004
SHEET No. C-139 OF 139 SHEETS