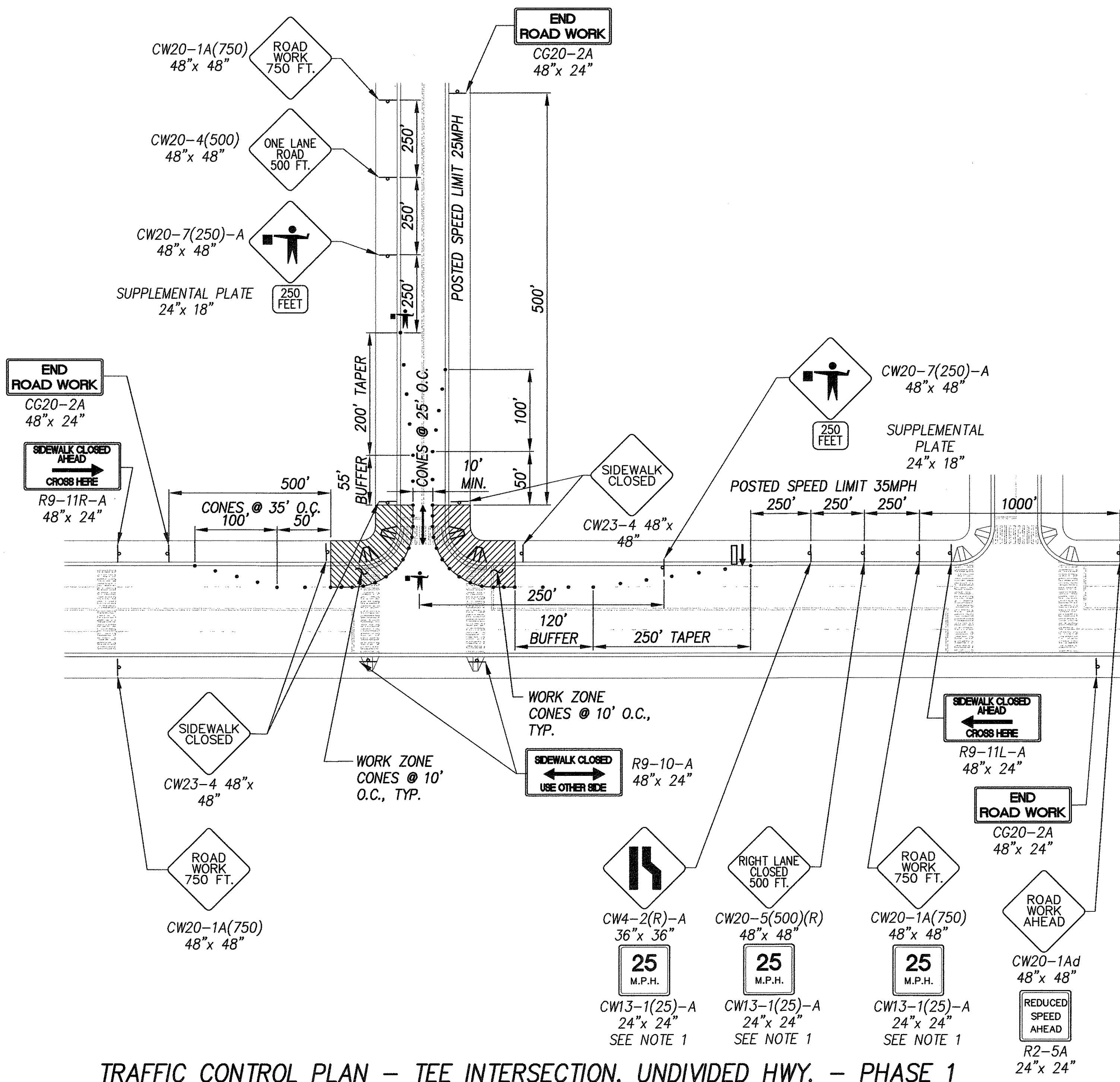
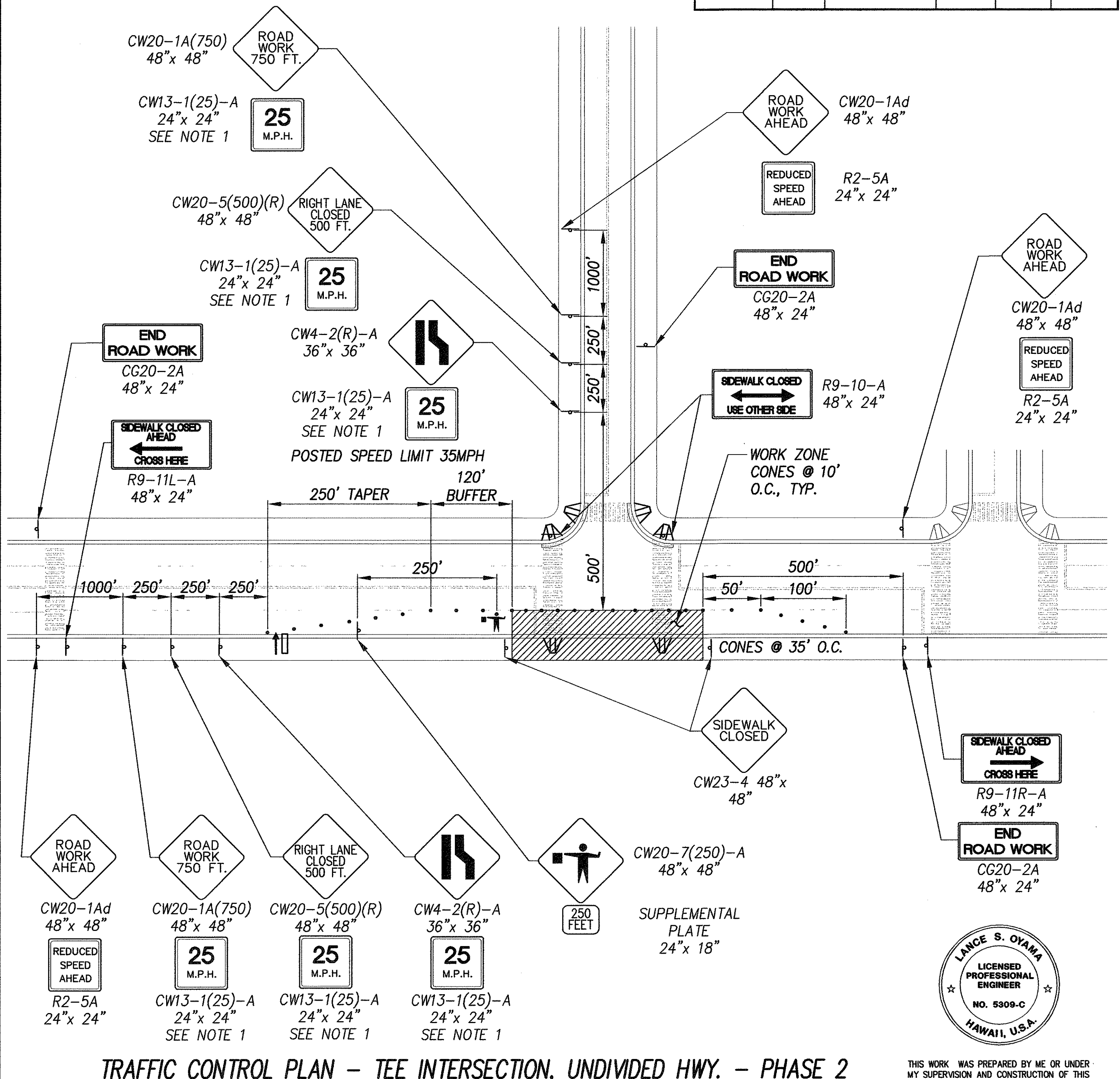


FED. ROAD DIST. NO.	STATE	FED. AID PROJ. NO.	FISCAL YEAR	SHEET NO.	TOTAL SHEETS
HAWAII	HAW.	CMAQ-0300(97)	2004	123	163



TRAFFIC CONTROL PLAN - TEE INTERSECTION, UNDIVIDED HWY. - PHASE 1
SCALE: NTS

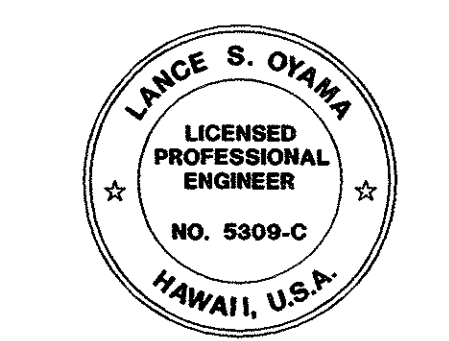


TRAFFIC CONTROL PLAN - TEE INTERSECTION, UNDIVIDED HWY. - PHASE 2
SCALE: NTS

- NOTES:
1. FOR POSTED SPEED OF 35MPH ONLY. FOR AREAS W/ POSTED SPEED OF 45MPH, USE CW13-1(35)-A (35MPH CONSTRUCTION ZONE SPEED LIMIT)
 2. SIGN SPACING, TAPER AND BUFFER LENGTHS SHALL BE IN ACCORDANCE TO EITHER THE STD. SPEC. SECTION 645, STATE OF HAWAII DEPT. OF TRANSPORTATION, HIGHWAYS DIVISION OR THE MANUAL ON UNIFORM TRAFFIC CONTROL DEVICES (MUTCD), 2000 ED. THE CONTRACTOR SHALL APPLY THE STRICTER OF THE TWO.

LEGEND

- ↓ CONSTRUCTION SIGN
- POLICE OFFICER
- CONES
- ↓ FLASHING ARROW SIGN



THIS WORK WAS PREPARED BY ME OR UNDER MY SUPERVISION AND CONSTRUCTION OF THIS PROJECT WILL BE UNDER MY OBSERVATION.

Lance S. Oyama
SIGNATURE
DATE: APRIL 30, 2006

"OBSERVATION OF CONSTRUCTION" IS DEFINED IN CHAPTER 16-115, HAWAII ADMINISTRATIVE RULES ENTITLED "PROFESSIONAL ENGINEERS, ARCHITECTS, SURVEYORS AND LANDSCAPE ARCHITECTS".

STATE OF HAWAII
DEPARTMENT OF TRANSPORTATION
HIGHWAYS DIVISION

TYPICAL TRAFFIC CONTROL PLAN - 6

Pedestrian Facilities & ADA Compliance at Various Locations on Oahu, Unit 6
Fed. Aid Proj. No. CMAQ-0300(97)

Scale: As Shown Date: JULY 19, 2004

SHEET No. C-122 OF 122 SHEETS

ORIGINAL PLAN	SURVEY PLATTED BY	DATE
NOTE BOOK	DRAWN BY	
	DESIGNED BY	
	QUANTITIES BY	
	CHECKED BY	

DATE	REVISION