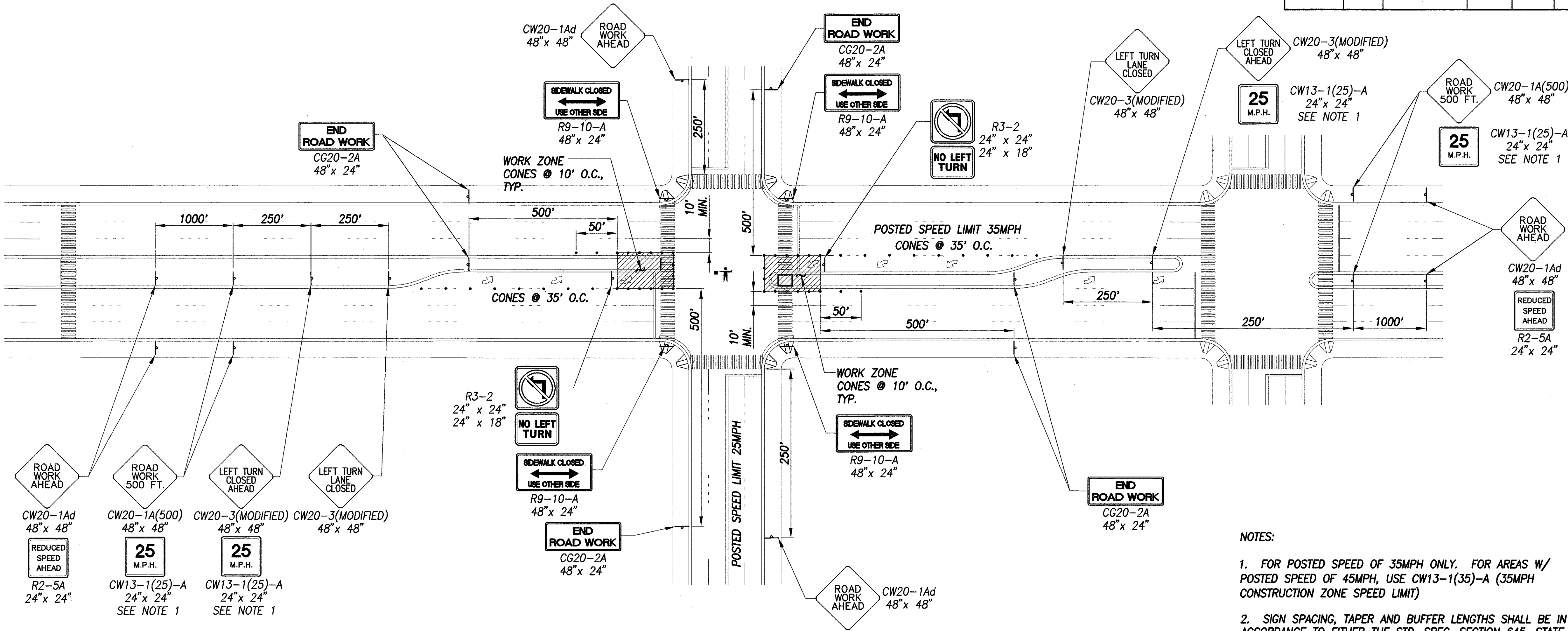


FED. ROAD DIST. NO.	STATE	FED. AID PROJ. NO.	FISCAL YEAR	SHEET NO.	TOTAL SHEETS
HAWAII	HAW.	CMAQ-0300(96)	2004	120	153



- NOTES:
- FOR POSTED SPEED OF 35MPH ONLY. FOR AREAS W/ POSTED SPEED OF 45MPH, USE CW13-1(35)-A (35MPH CONSTRUCTION ZONE SPEED LIMIT)
 - SIGN SPACING, TAPER AND BUFFER LENGTHS SHALL BE IN ACCORDANCE TO EITHER THE STD. SPEC. SECTION 645, STATE OF HAWAII DEPT. OF TRANSPORTATION, HIGHWAYS DIVISION OR THE MANUAL ON UNIFORM TRAFFIC CONTROL DEVICES (MUTCD), 2003 ED. THE CONTRACTOR SHALL APPLY THE STRICTER OF THE TWO.

LEGEND

- CONSTRUCTION SIGN
- POLICE OFFICER
- CONES
- FLASHING ARROW SIGN



THIS WORK WAS PREPARED BY ME OR UNDER MY SUPERVISION AND CONSTRUCTION OF THIS PROJECT WILL BE UNDER MY OBSERVATION.

SIGNATURE: *Greg H. Hiyaumoto* DATE: April 30, 2006

"OBSERVATION OF CONSTRUCTION" IS DEFINED IN CHAPTER 16-115, HAWAII ADMINISTRATIVE RULES ENTITLED "PROFESSIONAL ENGINEERS, ARCHITECTS, SURVEYORS AND LANDSCAPE ARCHITECTS".

STATE OF HAWAII
DEPARTMENT OF TRANSPORTATION
HIGHWAYS DIVISION

TYPICAL TRAFFIC CONTROL PLAN - 3

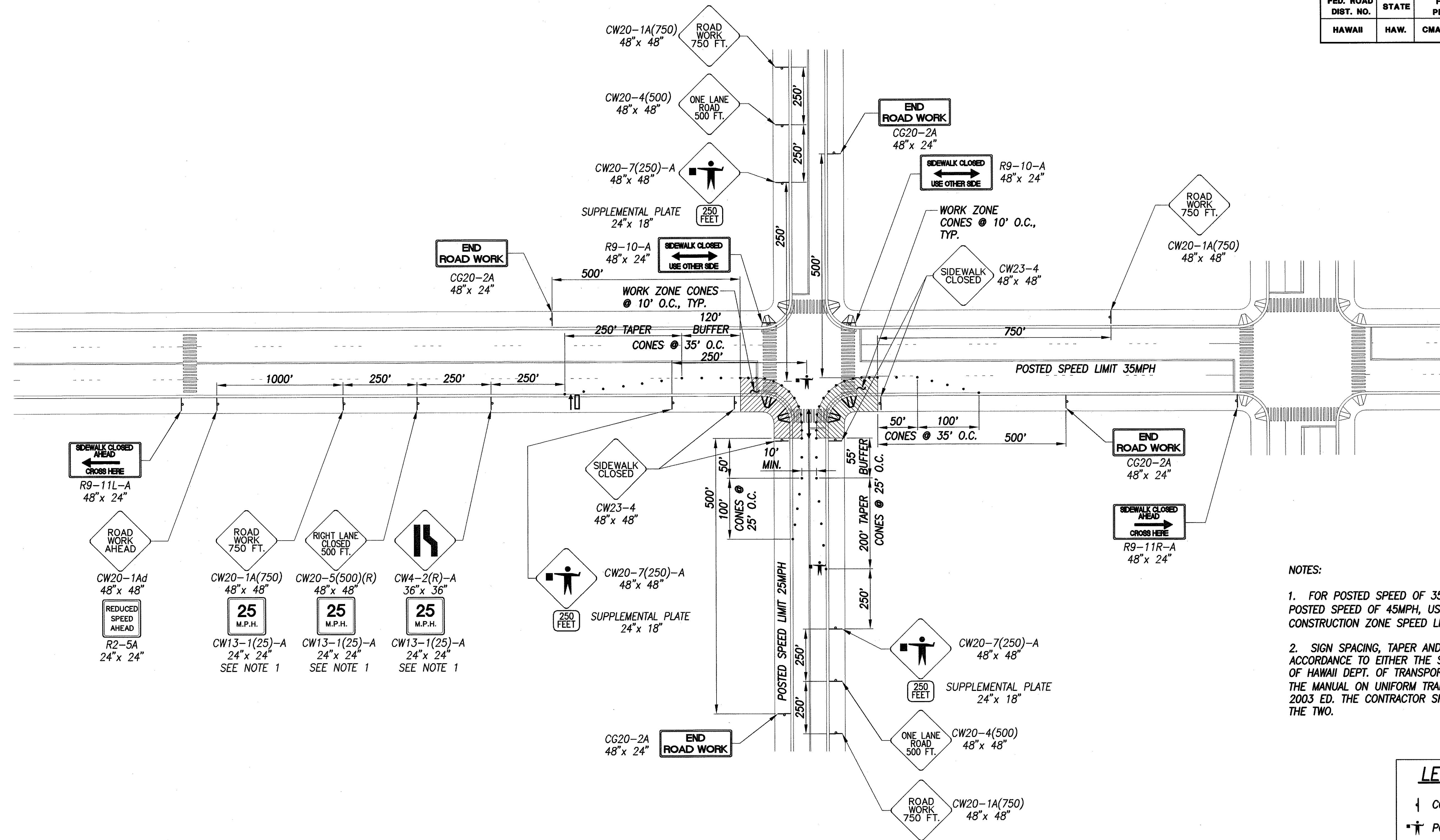
Pedestrian Facilities & ADA Compliance
at Various Locations on Oahu, Unit 5
Fed. Aid Proj. No. CMAQ-0300(96)

Scale: AS SHOWN Date: August 2004

SHEET No. C-119 OF 153 SHEETS

DESIGNED BY	DATE
CHECKED BY	
NOTED BY	
ORIGINAL PLAN	
NOTE BOOK	
No.	

FED. ROAD DIST. NO.	STATE	FED. AID PROJ. NO.	FISCAL YEAR	SHEET NO.	TOTAL SHEETS
HAWAII	HAW.	CMAQ-0300(96)	2004	122	153



NOTES:

- FOR POSTED SPEED OF 35MPH ONLY. FOR AREAS W/ POSTED SPEED OF 45MPH, USE CW13-1(35)-A (35MPH CONSTRUCTION ZONE SPEED LIMIT)
- SIGN SPACING, TAPER AND BUFFER LENGTHS SHALL BE IN ACCORDANCE TO EITHER THE STD. SPEC. SECTION 645, STATE OF HAWAII DEPT. OF TRANSPORTATION, HIGHWAYS DIVISION OR THE MANUAL ON UNIFORM TRAFFIC CONTROL DEVICES (MUTCD), 2003 ED. THE CONTRACTOR SHALL APPLY THE STRICTER OF THE TWO.

LEGEND

- CONSTRUCTION SIGN
- POLICE OFFICER
- CONES
- FLASHING ARROW SIGN

TRAFFIC CONTROL PLAN - CROSS INTERSECTION, UNDIVIDED HWY. - PHASE 2

SCALE: NTS



THIS WORK WAS PREPARED BY ME OR UNDER MY SUPERVISION AND CONSTRUCTION OF THIS PROJECT WILL BE UNDER MY OBSERVATION.

SIGNATURE: *Greg H. Hiyakumoto* DATE: April 30, 2006

"OBSERVATION OF CONSTRUCTION" IS DEFINED IN CHAPTER 16-115, HAWAII ADMINISTRATIVE RULES ENTITLED "PROFESSIONAL ENGINEERS, ARCHITECTS, SURVEYORS AND LANDSCAPE ARCHITECTS".

STATE OF HAWAII
DEPARTMENT OF TRANSPORTATION
HIGHWAYS DIVISION

TYPICAL TRAFFIC CONTROL PLAN - 5

Pedestrian Facilities & ADA Compliance
at Various Locations on Oahu, Unit 5
Fed. Aid Proj. No. CMAQ-0300(96)

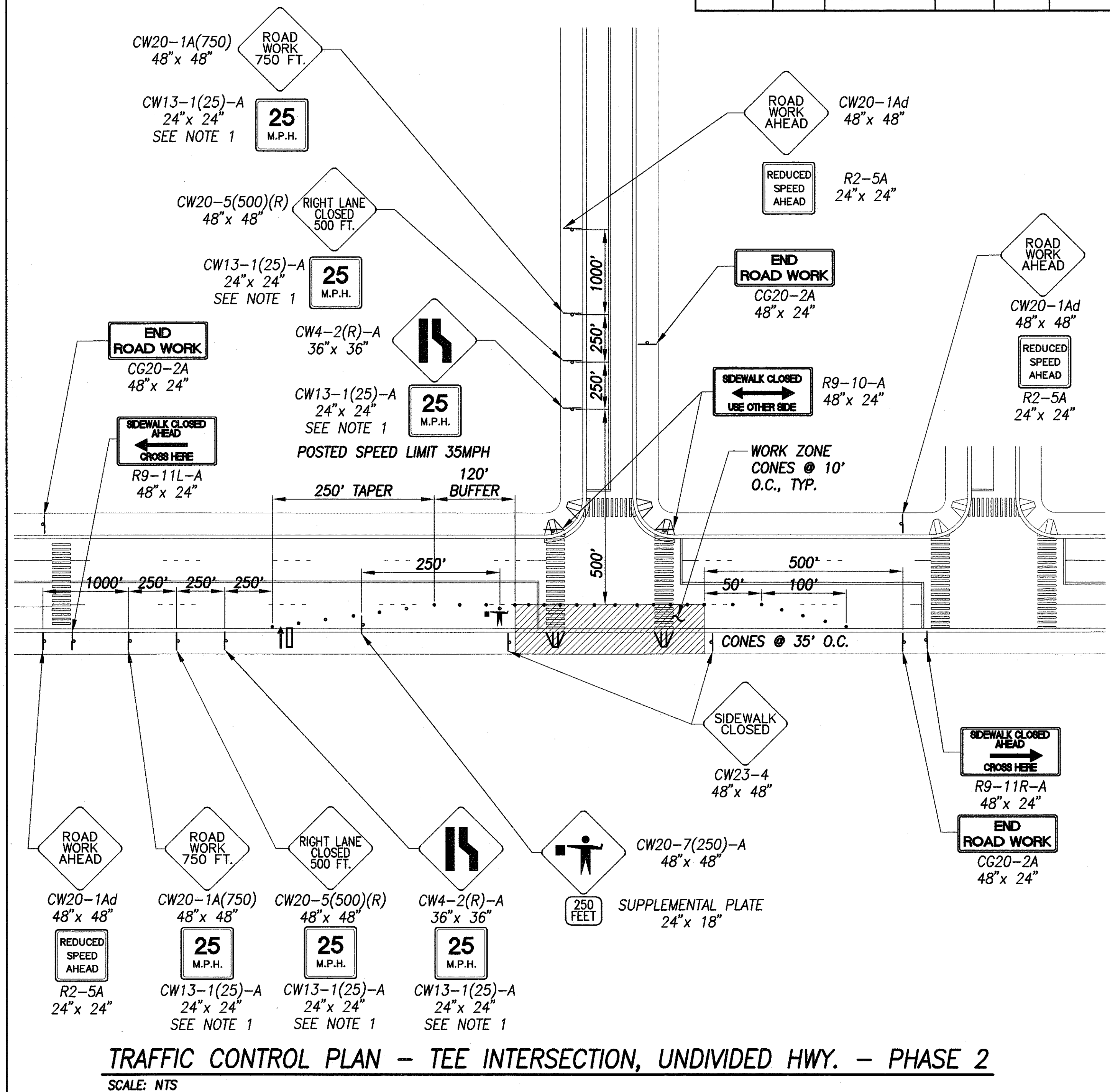
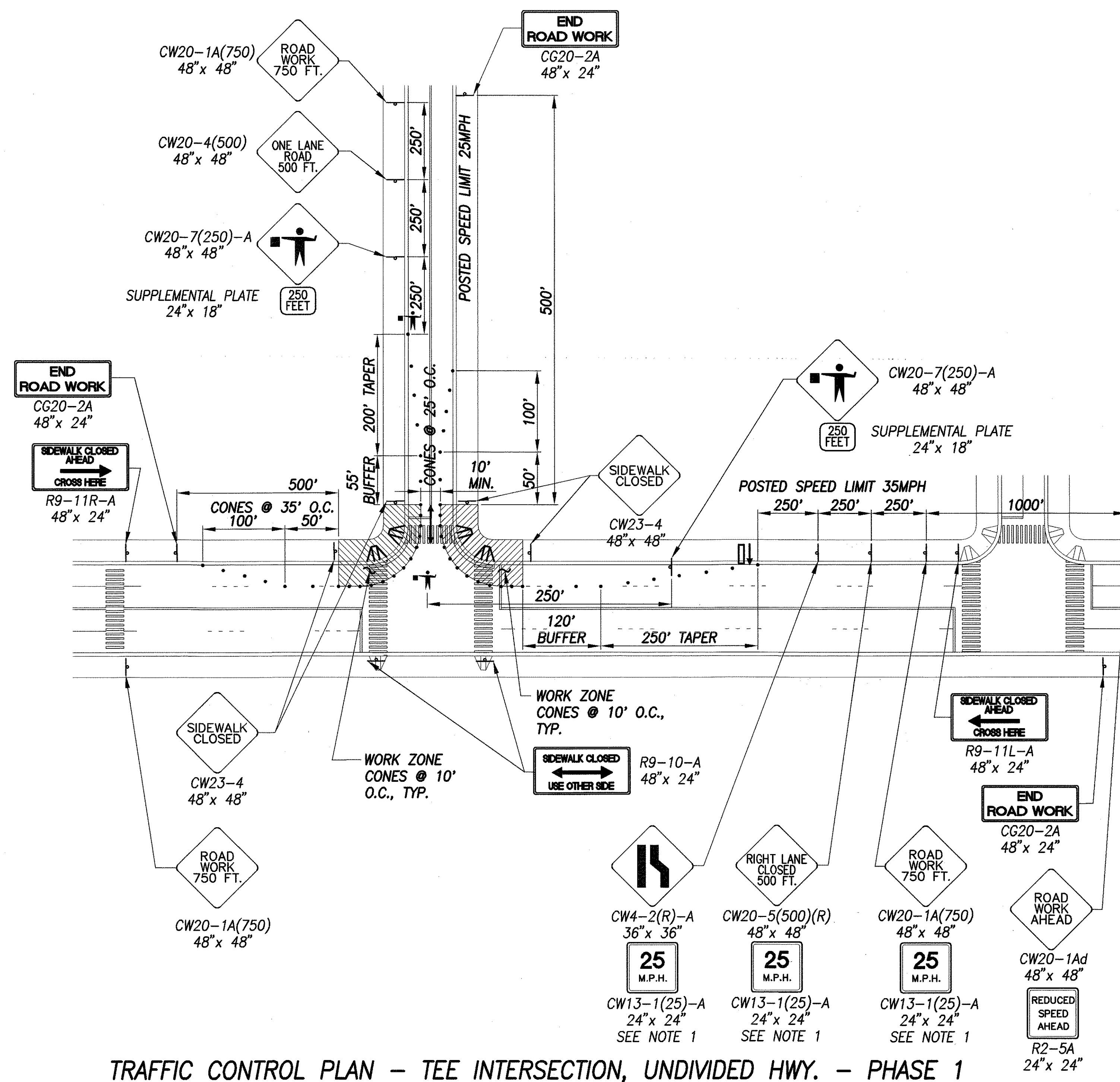
Scale: AS SHOWN

Date: August 2004

SHEET No. C-121 OF 153 SHEETS

SURVEY PLANNED BY	DATE
DRAWN BY	
DESIGNED BY	
CHECKED BY	
ORIGINAL PLAN	
NOTE BOOK	
No.	

FED. ROAD DIST. NO.	STATE	FED. AID PROJ. NO.	FISCAL YEAR	SHEET NO.	TOTAL SHEETS
HAWAII	HAW.	CMAQ-0300(96)	2004	123	153



SURVEY PLANNED BY	DATE
DRAWN BY	
TRACED BY	
QUANTITIES BY	
CHECKED BY	
ORIGINAL PLAN	
NOTE BOOK	
No.	

LEGEND

- ↓ CONSTRUCTION SIGN
- POLICE OFFICER
- CONES
- ↓ FLASHING ARROW SIGN

NOTES:

- FOR POSTED SPEED OF 35MPH ONLY. FOR AREAS W/ POSTED SPEED OF 45MPH, USE CW13-1(35)-A (35MPH CONSTRUCTION ZONE SPEED LIMIT)
- SIGN SPACING, TAPER AND BUFFER LENGTHS SHALL BE IN ACCORDANCE TO EITHER THE STD. SPEC. SECTION 645, STATE OF HAWAII DEPT. OF TRANSPORTATION, HIGHWAYS DIVISION OR THE MANUAL ON UNIFORM TRAFFIC CONTROL DEVICES (MUTCD), 2003 ED. THE CONTRACTOR SHALL APPLY THE STRICTER OF THE TWO.



THIS WORK WAS PREPARED BY ME OR UNDER MY SUPERVISION AND CONSTRUCTION OF THIS PROJECT WILL BE UNDER MY OBSERVATION.

SIGNATURE: *Greg H. Hiyaunoto* DATE: April 30, 2006

"OBSERVATION OF CONSTRUCTION" IS DEFINED IN CHAPTER 16-115, HAWAII ADMINISTRATIVE RULES ENTITLED "PROFESSIONAL ENGINEERS, ARCHITECTS, SURVEYORS AND LANDSCAPE ARCHITECTS".

STATE OF HAWAII DEPARTMENT OF TRANSPORTATION HIGHWAYS DIVISION TYPICAL TRAFFIC CONTROL PLAN - 6

*Pedestrian Facilities & ADA Compliance
at Various Locations on Oahu, Unit 5
Fed. Aid Proj. No. CMAQ-0300(96)*

Scale: AS SHOWN Date: August 2004

SHEET No. C-122 OF 153 SHEETS