

GENERAL NOTES

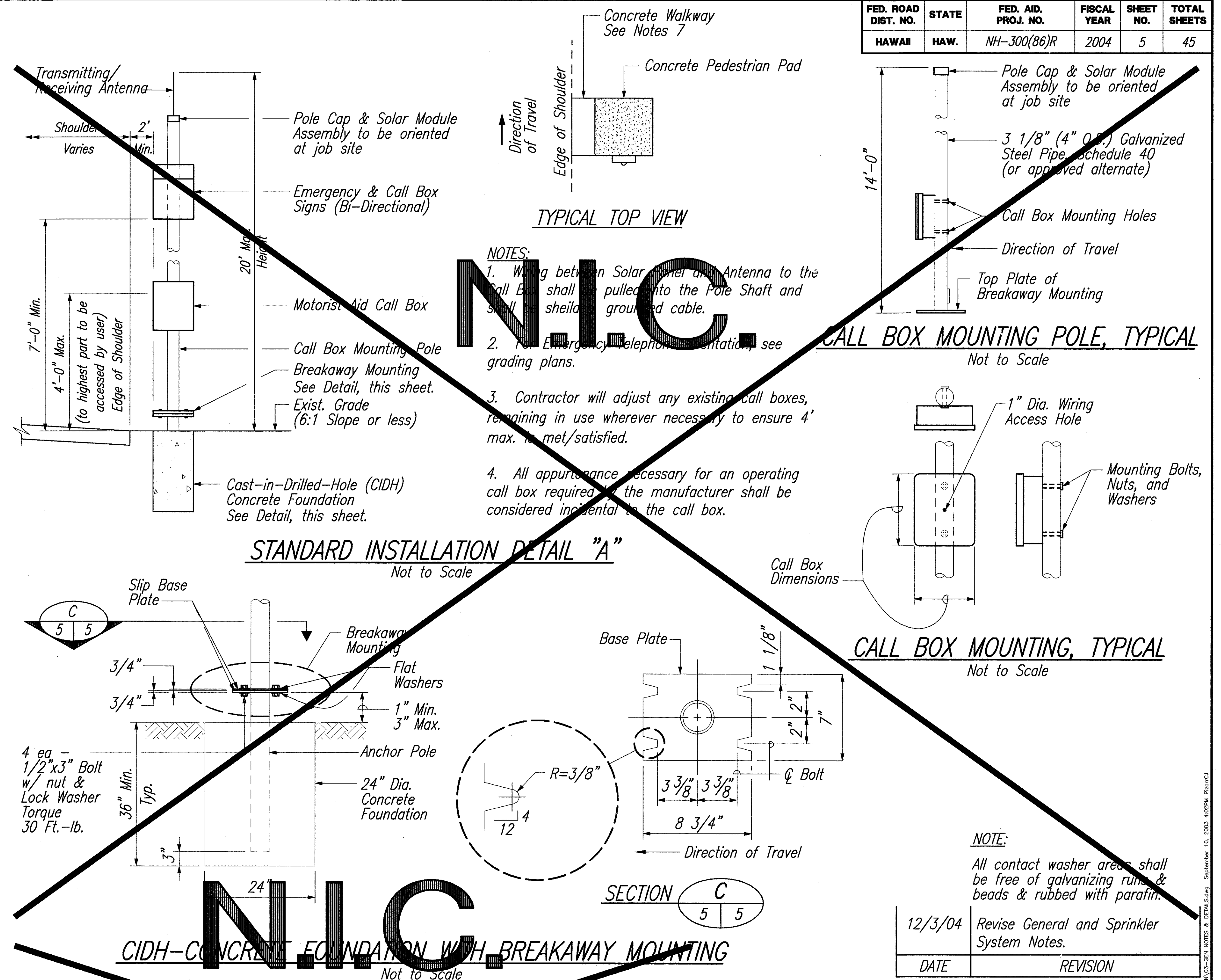
1. Scope of work for this project includes installing ADA compliant pedestrian access and traffic control.
2. The Contractor is reminded of the requirements of Subsection 108.01 - Subletting of Contract, which requires him to perform work amounting to not less than 30 percent of the total contract cost less deductible items. Non-compliance with this Subsection may be grounds for rejection of bid.
3. The Contractor's attention is directed to the following Sections of the Special Provisions. Subsection 107.13 - Public Convenience and Safety, Subsection 107.21 - Contractor's Responsibility for Utility Property and Services, Section 645 - Traffic Control.
4. At the end of each day's work, the Contractor shall remove all equipment and other obstructions to permit free and safe passage of public traffic.
5. Location of existing underground structures and utilities such as pipelines, conduits, cables, etc., manholes, monuments, and structures shown on the plans are approximate only. It is not the responsibility of these plans to show the exact location of all underground utilities and structures. It is the responsibility of the contractor to verify the locations of all existing utilities with the respective owners. Existing utilities damaged by the Contractor shall be repaired by the Contractor at his own cost.
6. Concrete walkway from pedestrian pad to edge of shoulder shall not exceed a maximum slope of 5%. See Sheet No. 9 for detail.
7. If concrete walkway from pedestrian pad to edge of shoulder exceeds the maximum slope of 20:1, a concrete ADA accessible ramp shall be constructed. See Sheet No.9 for detail.
8. All slopes and exposed areas shall be sodded or planted as soon as final grades have been established. Landscaping, inclusive of Planting Soil and Grassed Surface paid under Lump Sum Item No. 618.0000
9. The Contractor shall provide 4-inch bed course material under Pedestrian Access (concrete, walkways, pedestrian pads and ADA accessible ramp), except those Pedestrian Access over existing concrete gutter. The cost of bed course material shall be incidental to the bid price of applicable contract items.
10. If an accessible ramp is not constructed according to plans, the Contractor shall reconstruct the accessible ramp at no cost to the State. Construction tolerance for Portland Cement Concrete shall be based on 1/4" per 10 ft (+ 0.2%). Remedial measures will not be accepted.
11. The Contractor shall submit a Site-specific Best Management Practice (BMPs) to the Engineer at least 14 days prior to the start of construction. The Contractor shall not begin construction until the BMPs are accepted by the Engineer. The cost to the BMP submittals shall not be paid for separately, but shall be considered incidental to the various contract items.
12. Relocating highway lighting system will be paid under Force Account Item No. 622.9000.
13. Concrete Pedestrian Access to be paid under Contract Item No. 608.0000.

SPRINKLER SYSTEM NOTES

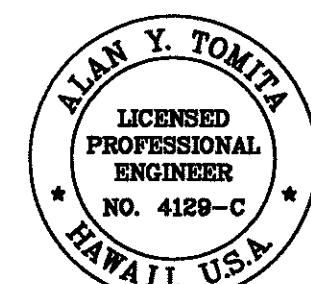
1. The Contractor shall restore any portion of the existing sprinkler system damaged during construction. Restoration of sprinkler system shall match the existing condition or better at no cost to the State.
2. When existing sprinkler systems require relocation due to conflicts with the Emergency Telephone and/or ADA accessible pad, the relocation will be paid under Contract Item No. 616.0230.
3. All coordination for relocation and restoration of sprinkler system shall be coordinated with the District Office.

LEGEND

	Emergency Telephones		New A.C. Pavement
	New Concrete		Transition A.C. Pavement
	Transition Concrete		Transition Grading/Grassing
		65.28 (65.28±)	Finished Elevation (existing elevation±)



FED. ROAD DIST. NO.	STATE	FED. AID PROJ. NO.	FISCAL YEAR	SHEET NO.	TOTAL SHEETS
HAWAII	HAW.	NH-300(86)R	2004	5	45



THIS WORK WAS PREPARED BY ME OR UNDER MY SUPERVISION.

Alan Y. Tomita

STATE OF HAWAII
DEPARTMENT OF TRANSPORTATION
HIGHWAYS DIVISION

**GENERAL NOTES, LEGEND
& STANDARD INSTALLATION DETAIL**

**INTERSTATE ROUTE H-1
EMERGENCY TELEPHONE ACCESSIBLE ROUTES**
F.A. Project No. NH-300(86)R

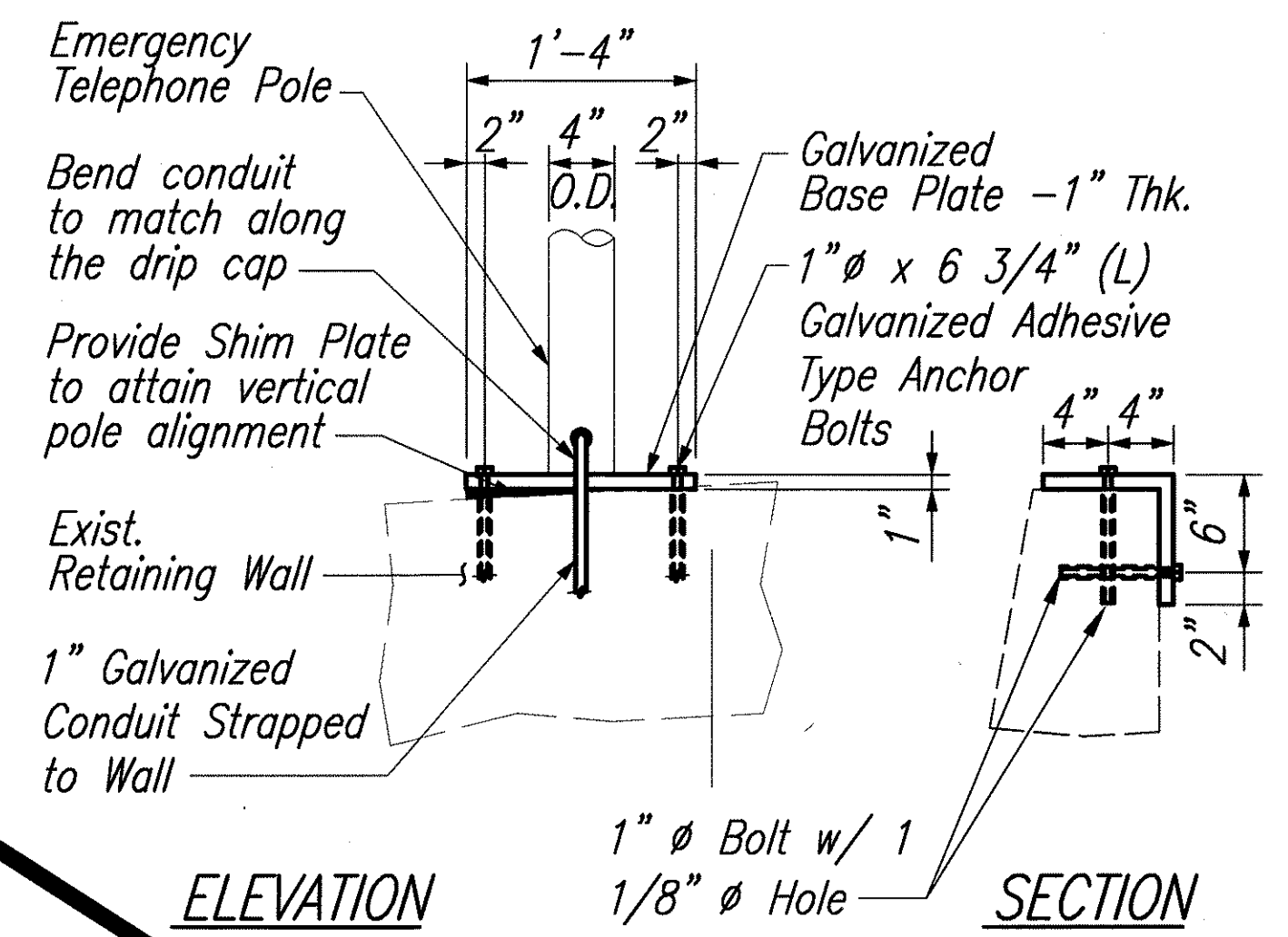
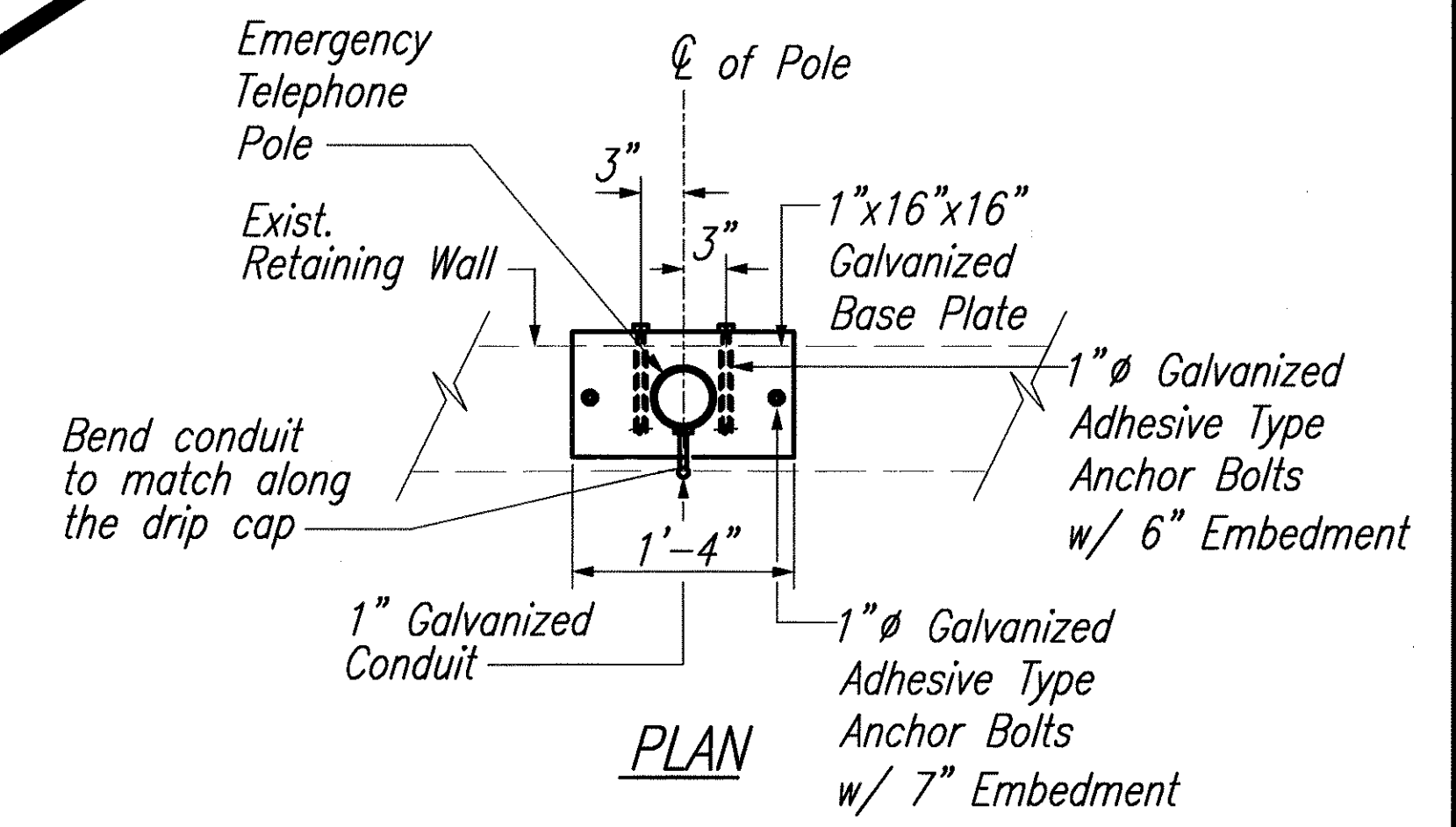
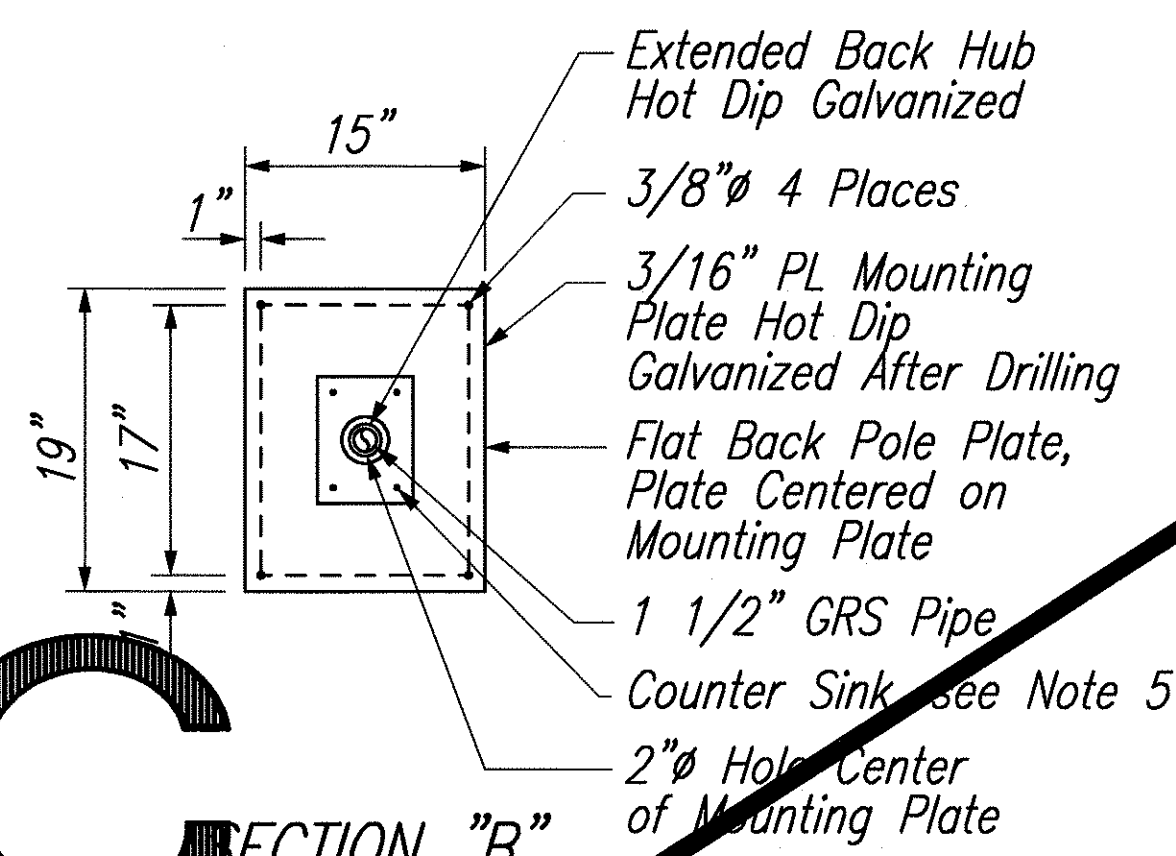
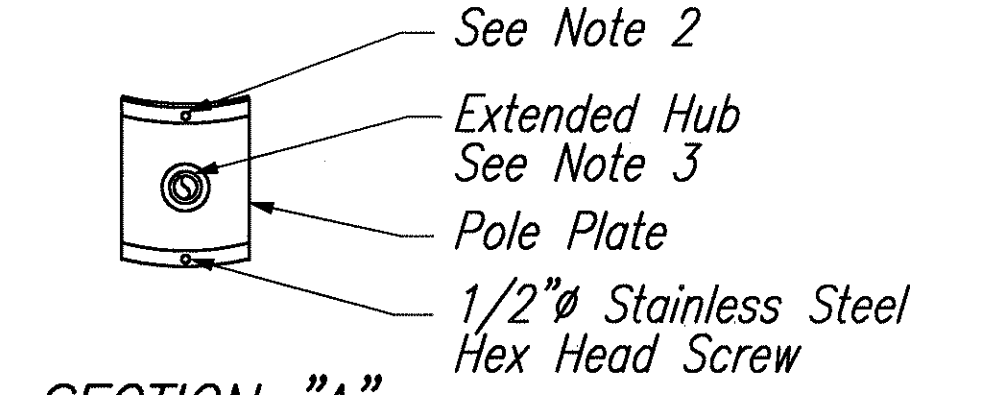
Scale: As Shown Date: September 2003

SHEET No. 1 OF 3 SHEETS

FED. ROAD DIST. NO.	STATE	FED. AID PROJ. NO.	FISCAL YEAR	SHEET NO.	TOTAL SHEETS
HAWAII	HAW.	NH-300(86)R	2004	6	45

NOTES:

1. Typical installation for behind metal and concrete barrier rail are similar.
2. Use bolts only in locations where straps are not feasible or a combination of straps and bolts. Preferred mounting method shall be stainless steel strap.
3. Lock conduits to hub with internal hex set. Screw or tack weld prior to hot dip galvanizing.
4. Adjust pipe length as required to fit location.
5. Install with 1/4" stainless steel countersink screws, washers and locknuts.



POLE MOUNTING DETAIL
Not to Scale

THIS WORK WAS PREPARED BY ME OR UNDER MY SUPERVISION.

Blanky Sanaul

STATE OF HAWAII
DEPARTMENT OF TRANSPORTATION
HIGHWAYS DIVISION
**STANDARD INSTALLATION
DETAILS - 2**
**INTERSTATE ROUTE H-1
EMERGENCY TELEPHONE ACCESSIBLE ROUTES**
F.A. Project No. NH-300(86)R
Scale: Not to Scale Date: September 2003
SHEET No. 2 OF 3 SHEETS

P:\Projects\03-Hwy\Emergency Call Box\DRAWINGS\DESIGN\03-GEN NOTES & DETAILS.dwg September 10, 2003 4:02PM P:\03-Hwy

