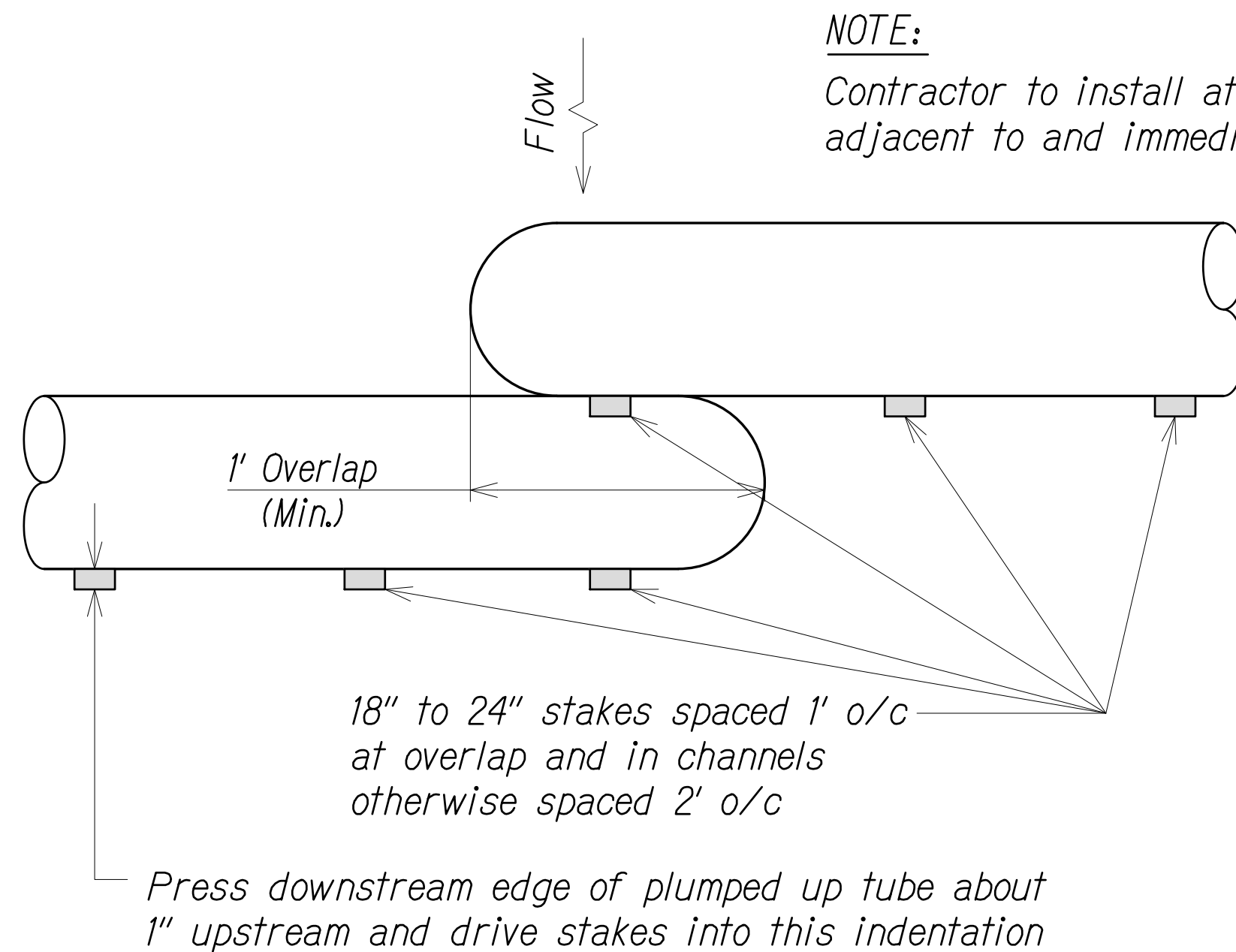




Attachment A-6

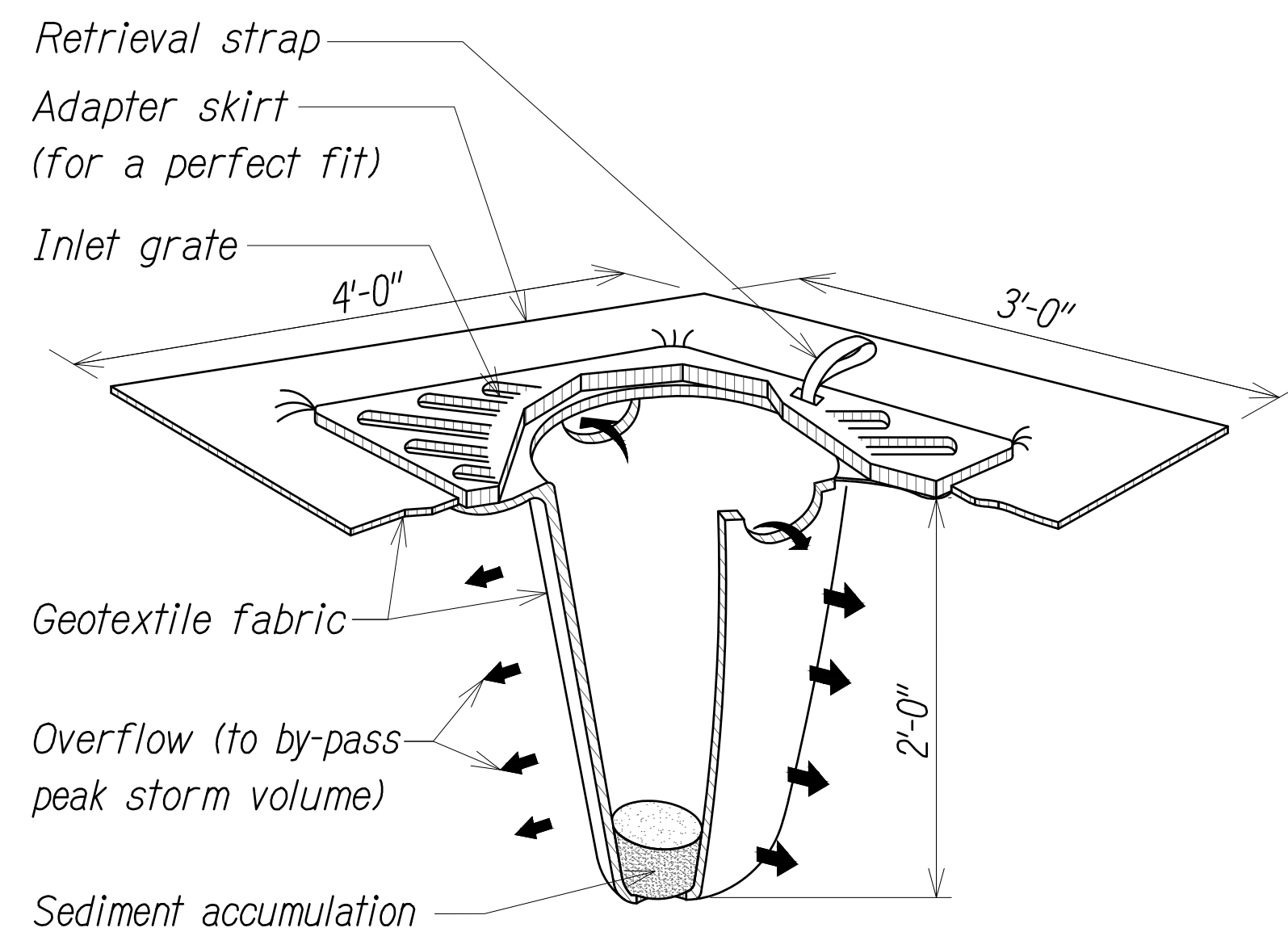
BMP Details- Form C



PLAN

TEMPORARY FIBER ROLL DETAIL

Not To Scale



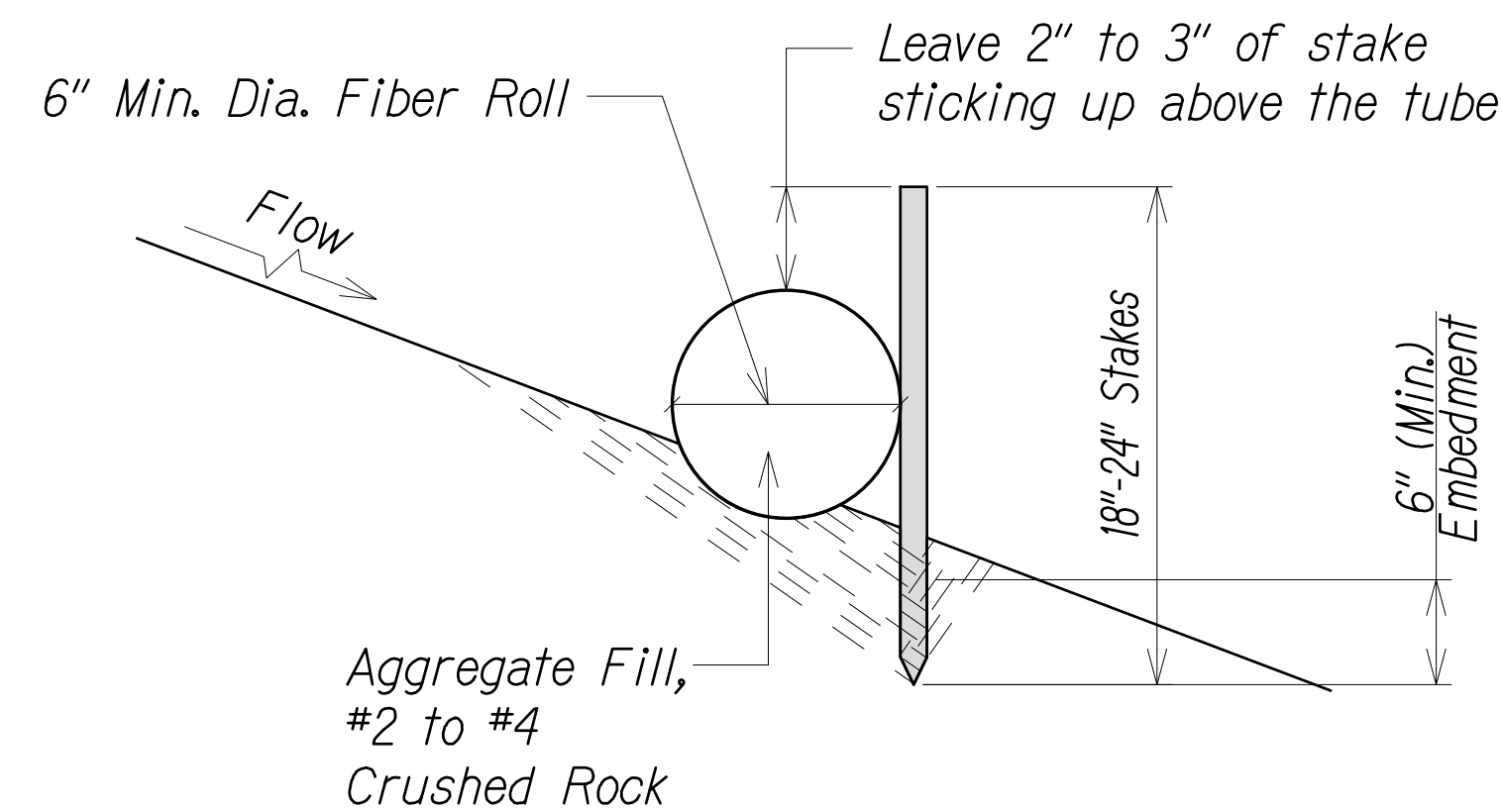
NOTES:

1. All inlet protection on road shoulders shall be protected from damage by vehicular traffic with Type II barricades with amber flashers.
2. Contractor shall check the condition of the filter at the beginning and ending of each work day and repair/ clean as necessary.

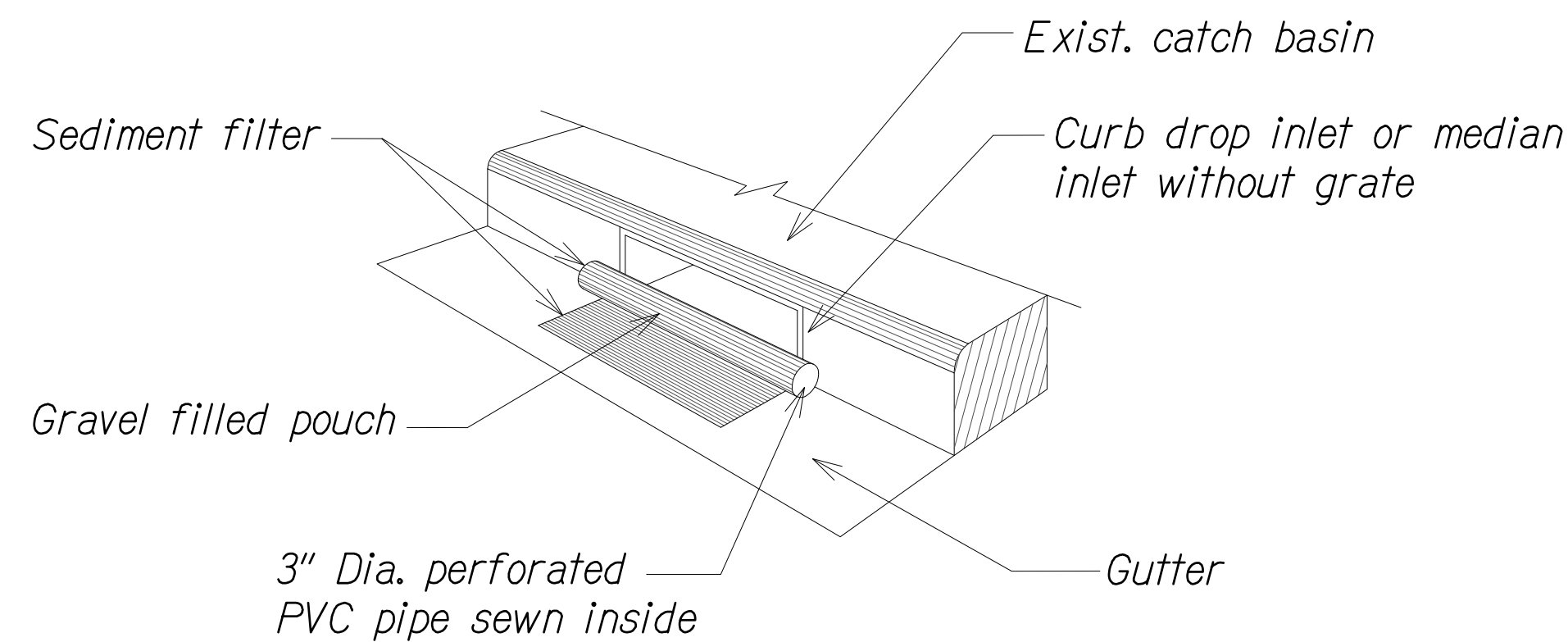
TEMPORARY SEDIMENT BARRIER

AT DRAIN INLET

Not To Scale



SECTION



TEMPORARY STORM DRAIN PROTECTION

Not To Scale

EROSION CONTROL/BEST MANAGEMENT PRACTICES NOTES:

1. Erosion control measures to be installed prior to start of work, and be maintained until completion of project.
2. All construction BMPs shall be inspected weekly, and within 24 hours of any rainfall event of 0.25 inches or greater in a 24 hour period. The Contractor shall submit a copy of the SWPPP Inspection and Maintenance Report Form to the Engineer within 24 hours of the inspection.
3. Remove filter at times of above normal rainfall events and replace them when the event has passed.
4. The final lift of each day's work shall be compacted to prevent erosion of fill material.
5. Good housekeeping shall be utilized to ensure protection of roadways from mud, dirt, and debris.
6. The Contractor shall ensure that all tires of construction vehicles are sufficiently cleaned off so that dirt or debris is not tracked off the construction site. Washing off tires with water will not be acceptable unless the runoff is contained and does not enter the storm drain system.
7. Any dirt or grassed area disturbed shall be restored by seeded hydromulch.
8. At the end of construction operations and at the completion of the project, Contractor shall inspect all catch basin, drain inlet and drain manhole surrounding the project site. Any accumulated sediment and debris found in storm drain structures shall be removed. Please note that flushing into the drain structures is prohibited.
9. Contractor shall submit proposed storm drain and sediment barrier for acceptance prior to installation.

FREEWAY MANAGEMENT SYSTEM,
PHASE 3, UNIT 1
FEDERAL AID PROJECT NO. NH-0300(152)

ATA AUSTIN, TSUTSUMI, & ASSOC., INC.
ENGINEERS, SURVEYORS • HONOLULU, HAWAII

SITE AND BMP DETAILS PLAN

EXHIBIT

57