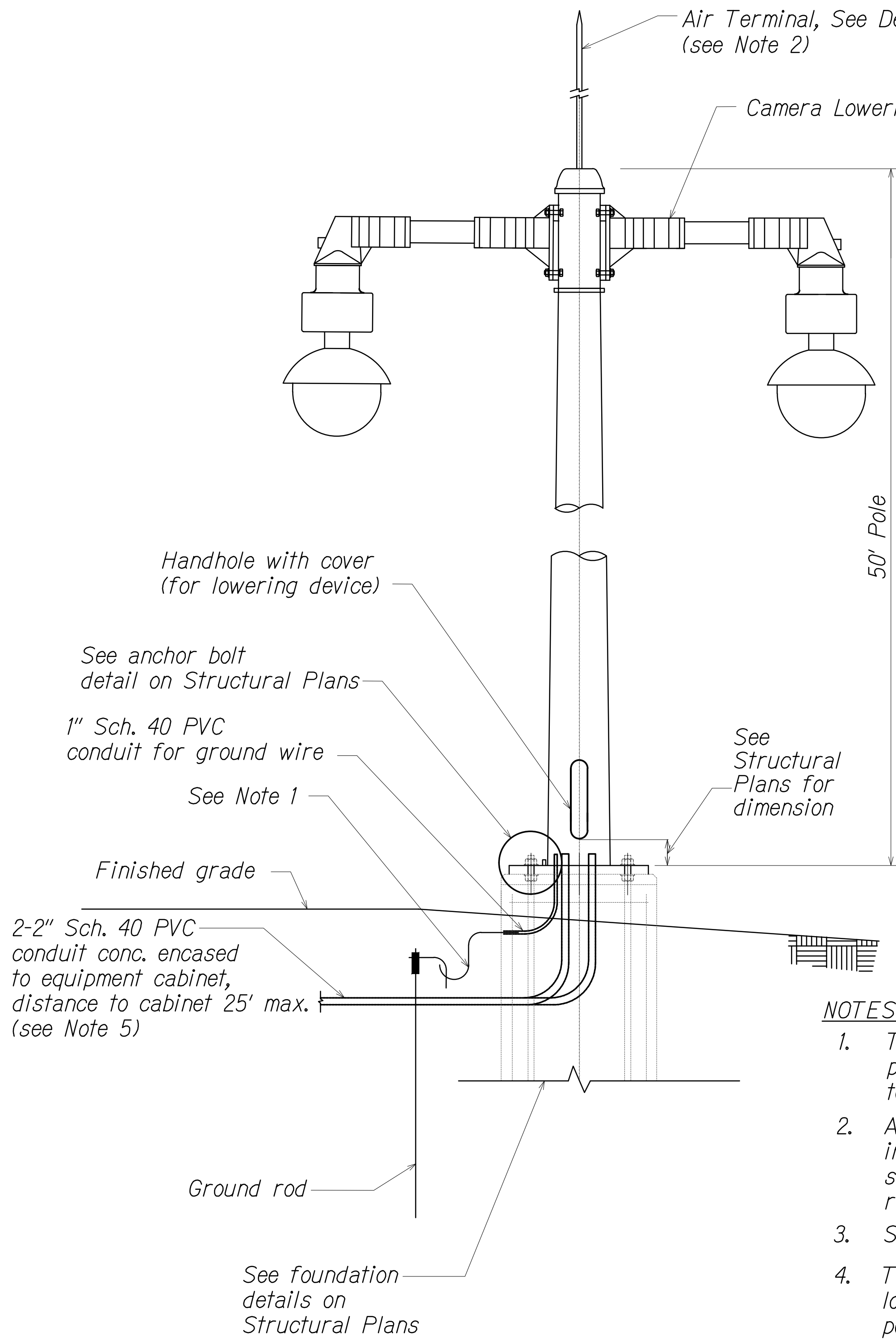
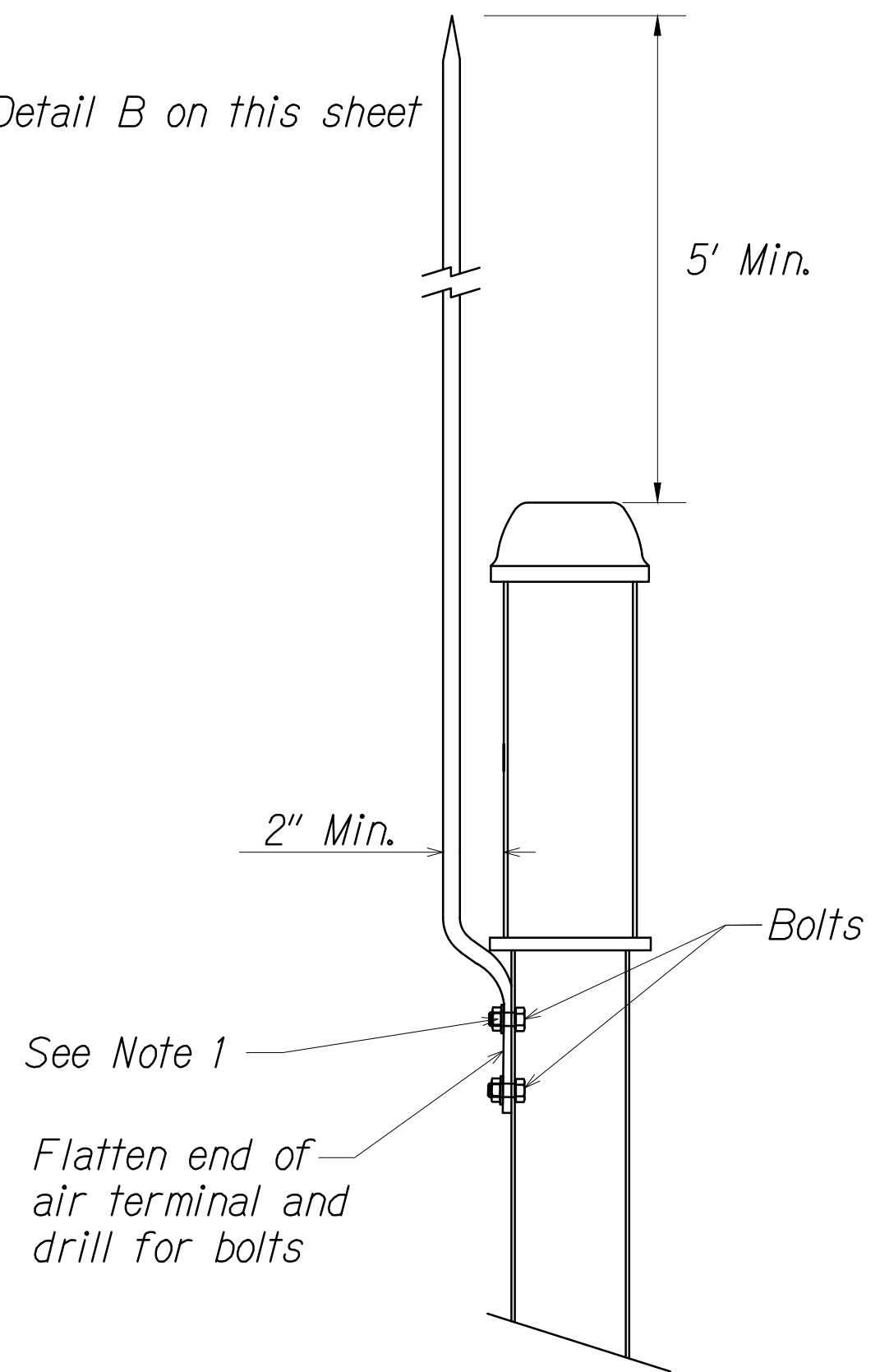


DIST. NO.	STATE	PROJ. NO.	FISCAL YEAR	SHEET NO.	TOTAL SHEETS
OAHU	HAW.	NH-0300(152)	2021	14	170

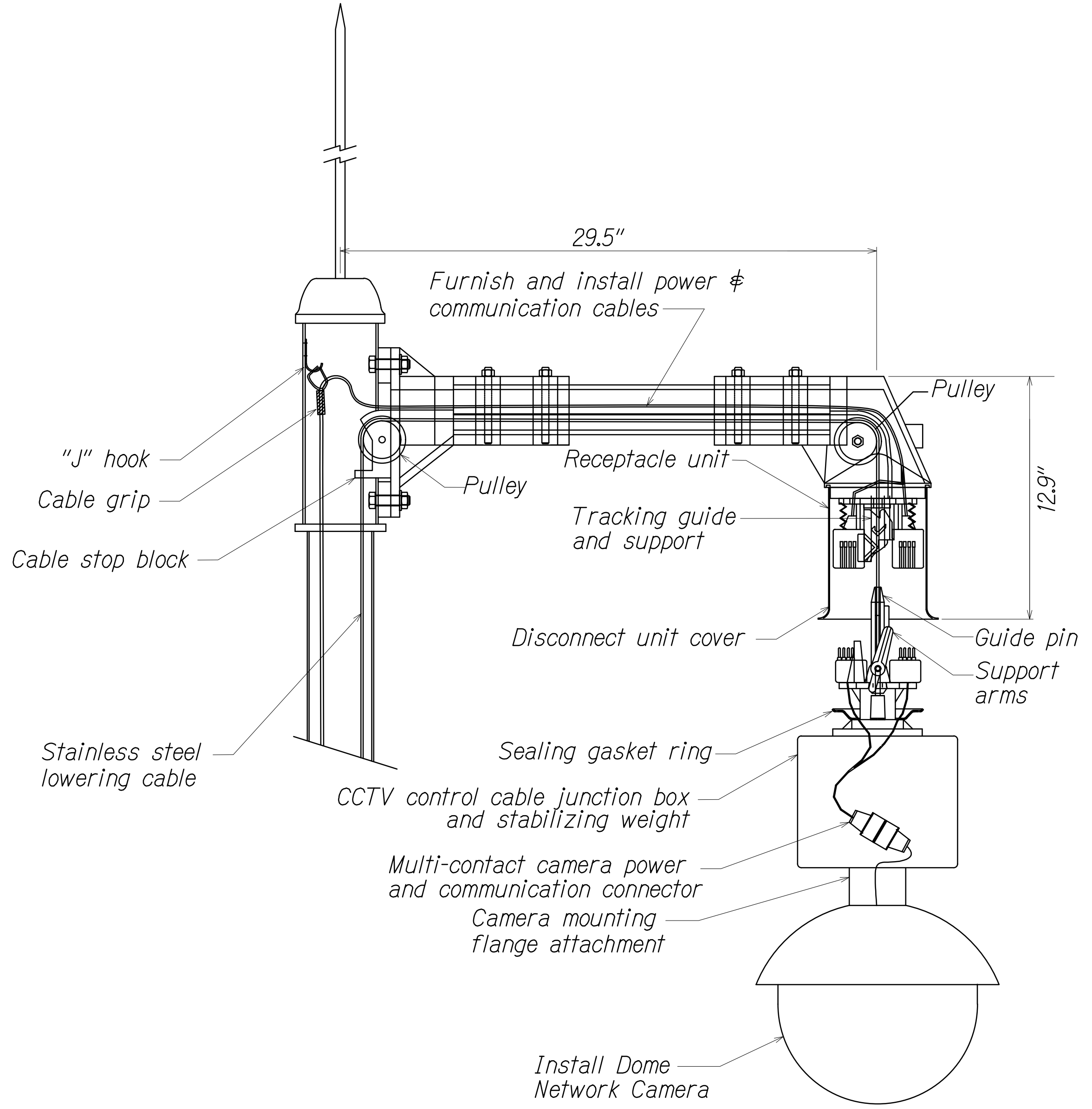


**1 CCTV POLE DETAIL**  
C-2-C-3 C-4 Not To Scale



**DETAIL A**  
**AIR TERMINAL**  
Not To Scale

- NOTES:**
1. The Contractor shall use an AWG #6 solid, bare copper wire to bond the pole to the ground rod(s), and AWG #2 solid, bare copper wire from air terminal to ground.
  2. Air terminal as required to provide lightning protection shall be included in all shop drawings submitted for approval. The tip of the air terminal shall be ground to a point. See Special Provisions for additional requirements.
  3. See Special Provisions for cabling requirements.
  4. The Contractor shall ensure that the orientation of the camera lowering device is aligned with that of the bolt circle pattern to be positioned to match the orientation detail on the site plans. This shall be approved by the Engineer prior to installation.
  5. Refer to State of Hawaii, Department of Transportation, Highways Division, Standard Plans 2008, TE-36 for trench details.



**DETAIL B**  
**CAMERA LOWERING DEVICE AND CCTV CAMERA**  
Not To Scale

SURVEY PLOTTED BY	DATE
DRAWN BY	"
TRACED BY	"
DESIGNED BY	"
QUANTITIES BY	"
CHECKED BY	"
No.	

P:\A\2019\19-201 FMS PHASE 3\1\DWG\C-4 CCTV DETAILS.DWG Jul 22, 2021-9:12 AM

0 1 2  
LINE IS 2 INCHES AT FULL SIZE  
(if not 2 inches scale accordingly)



THIS WORK WAS PREPARED BY ME OR UNDER MY SUPERVISION AND CONSTRUCTION OF THIS PROJECT WILL BE UNDER MY OBSERVATION AS DEFINED IN HAWAII TITLE 16, CHAPTER 115, RULES OF THE BOARD OF PROFESSIONAL ENGINEERS, ARCHITECTS AND SURVEYORS, STATE OF HAWAII.  
APRIL 30, 2022  
LIC. EXP. DATE

STATE OF HAWAII  
DEPARTMENT OF TRANSPORTATION  
HIGHWAYS DIVISION

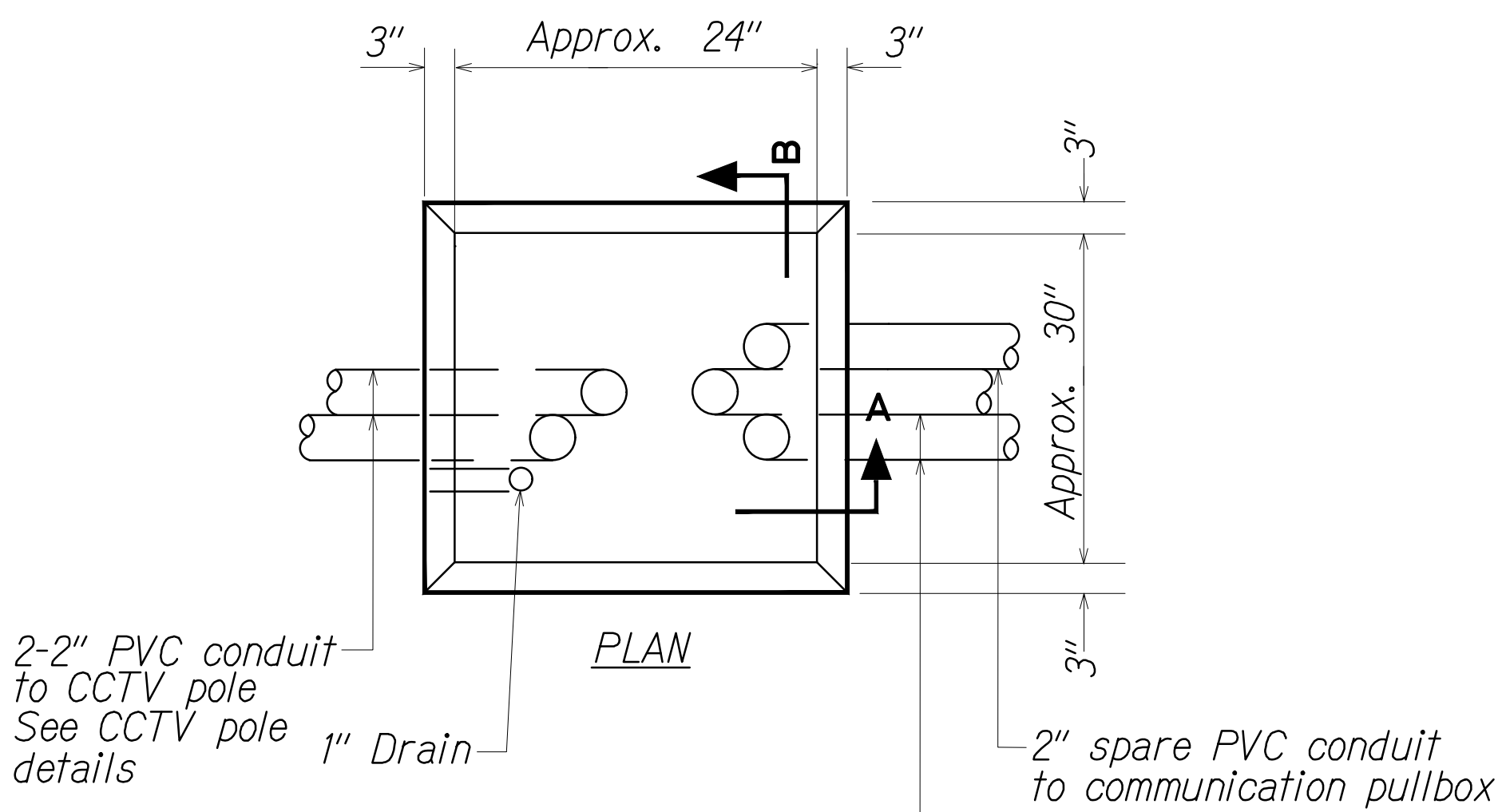
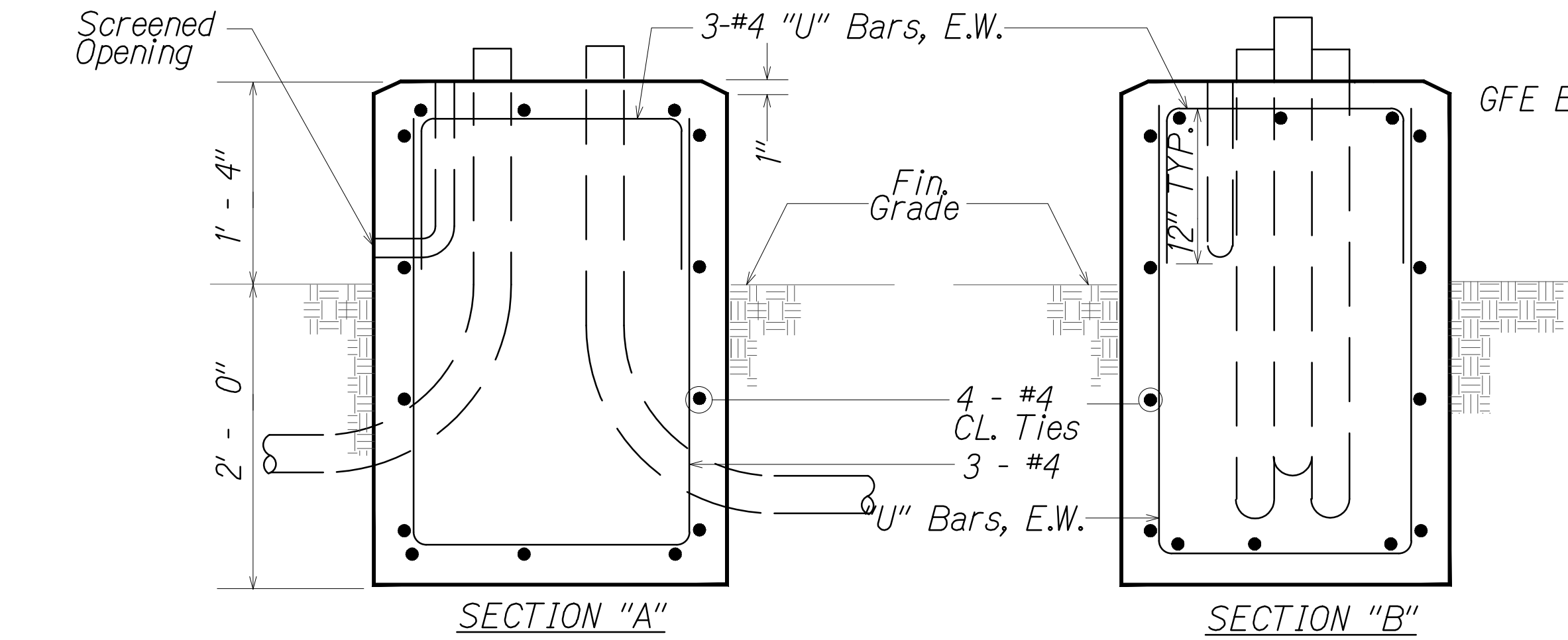
**CCTV DETAILS**

Freeway Management System, Phase 3,  
Unit 1  
Federal Aid Project No. NH-0300(152)

Scale: As Shown Date: June 25, 2021

SHEET No. C-4 OF 5 SHEETS

DIST. NO.	STATE	PROJ. NO.	FISCAL YEAR	SHEET NO.	TOTAL SHEETS
OAHU	HAW.	NH-0300(152)	2021	15	170

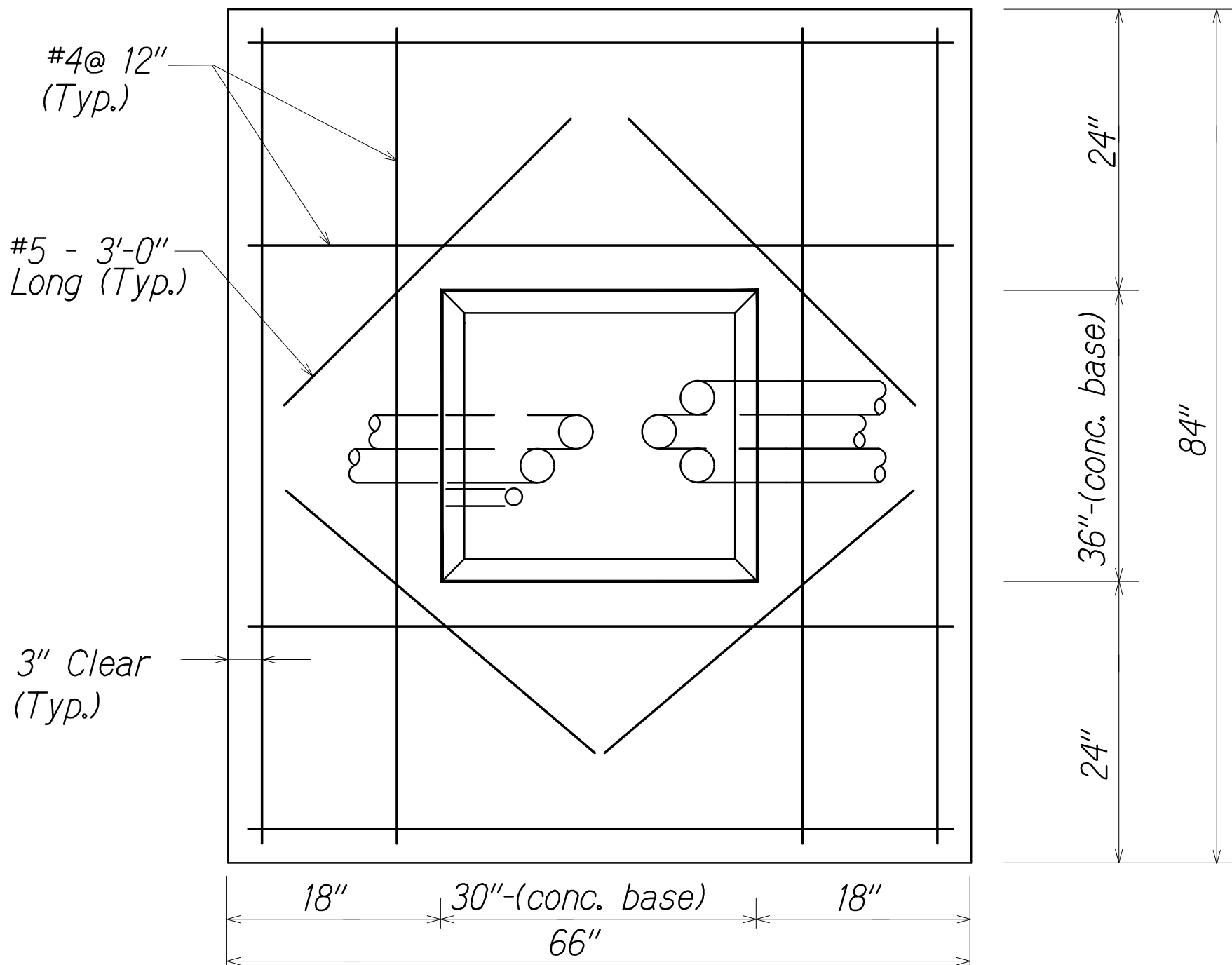


**CONCRETE BASE  
FOR EQUIPMENT CABINET**  
Not To Scale

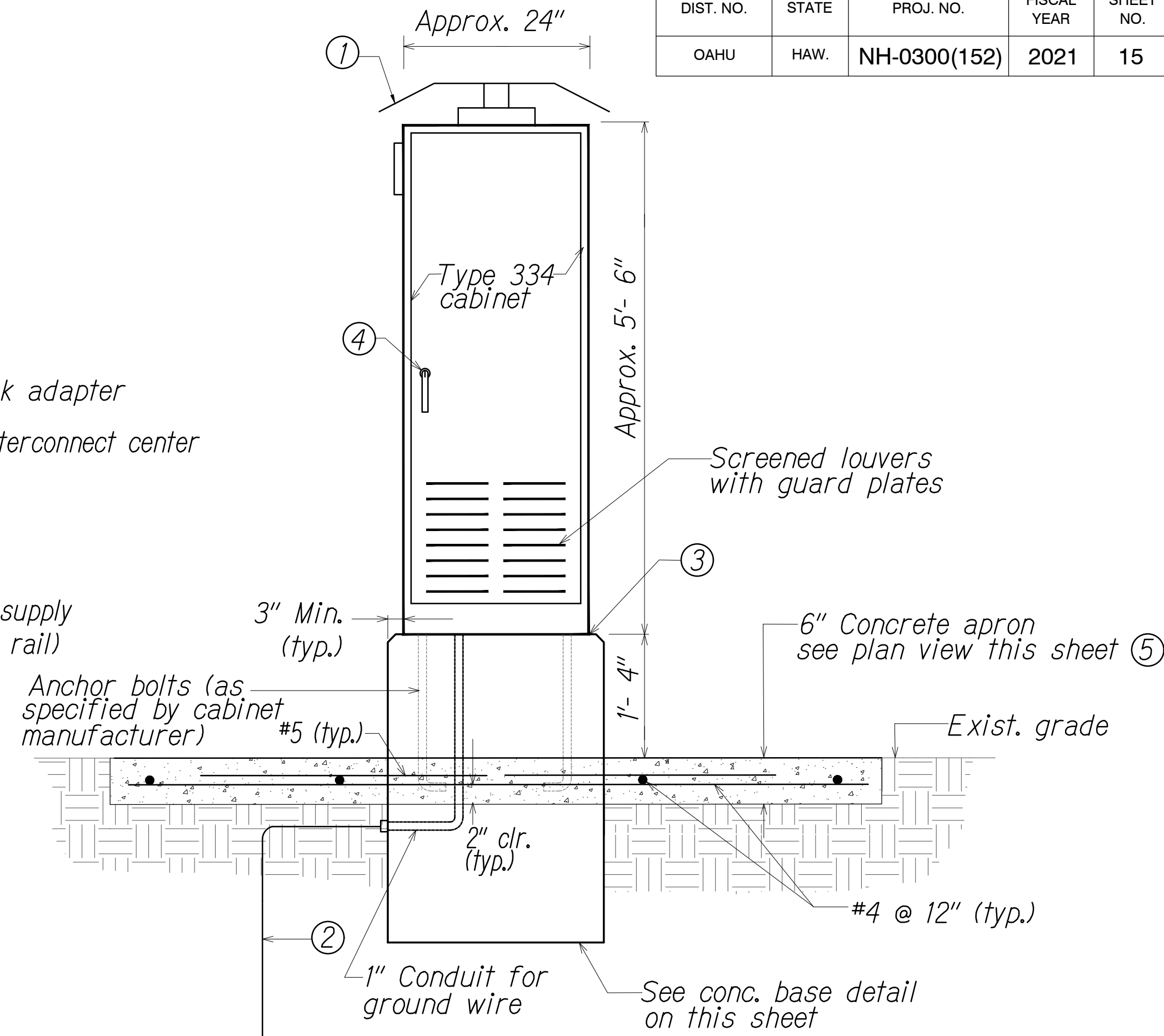
**NOTES:**

- Concrete shall be Class "B" (2500 psi).
- Dimensions shall be altered to suit controller cabinet actually furnished.
- Conduit bends and drain are incidental to concrete base.
- Refer to cabinet manufacturer's specifications for details of anchor bolts and base setting.
- All exposed surfaces of concrete base shall have a Class 2, rubbed finish.

**CABINET DEVICE LAYOUT DETAIL**  
Not To Scale



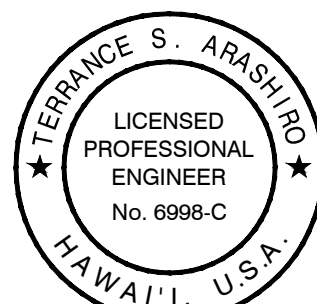
**PLAN VIEW OF CONCRETE APRON  
FOR EQUIPMENT CABINET**  
Not To Scale



**1 EQUIPMENT CABINET**  
C-2-C-3 | C-5 Not To Scale

**NOTES:**

- Sunshields on top and all sides of cabinet.
- Ground rod, 3/4" dia. x 8' min. if subsurface conditions exist which prohibit the placement of the ground rod in a vertical position, at the direction of the Engineer, the rod may be driven at an oblique angle not to exceed 45 degrees from vertical or buried in a trench at least 30" deep. connection to ground rod shall be cadwelded.
- Silicone caulk between cabinet and base and apron and base
- Door lock on each door
- Conc. apron shall be Class "B"



THIS WORK WAS PREPARED BY ME OR UNDER MY SUPERVISION AND CONSTRUCTION OF THIS PROJECT WILL BE UNDER MY OBSERVATION AS DEFINED IN H.A.R. TITLE 16, CHAPTER 115, RULES OF THE BOARD OF PROFESSIONAL ENGINEERS, ARCHITECTS AND SURVEYORS, STATE OF HAWAII.  
APRIL 30, 2022  
LIC. EXP. DATE

0 1 2  
LINE IS 2 INCHES AT FULL SIZE  
(if not 2 inches scale accordingly)

STATE OF HAWAII  
DEPARTMENT OF TRANSPORTATION  
HIGHWAYS DIVISION

**CCTV DETAILS**

Freeway Management System, Phase 3,  
Unit 1  
Federal Aid Project No. NH-0300(152)

Scale: As Shown Date: June 25, 2021

SHEET No. C-5 OF 5 SHEETS

ORIGINAL PLAN	DATE
DESIGNED BY	" "
TRACED BY	" "
NOTE BOOK	" "
QUANTITIES BY	" "
CHECKED BY	" "
No.	

P:\2019\19-201 FMS PHASE 3\1\DWG\C-5 CCTV DETAILS.DWG Jul 22, 2021-9:12 AM