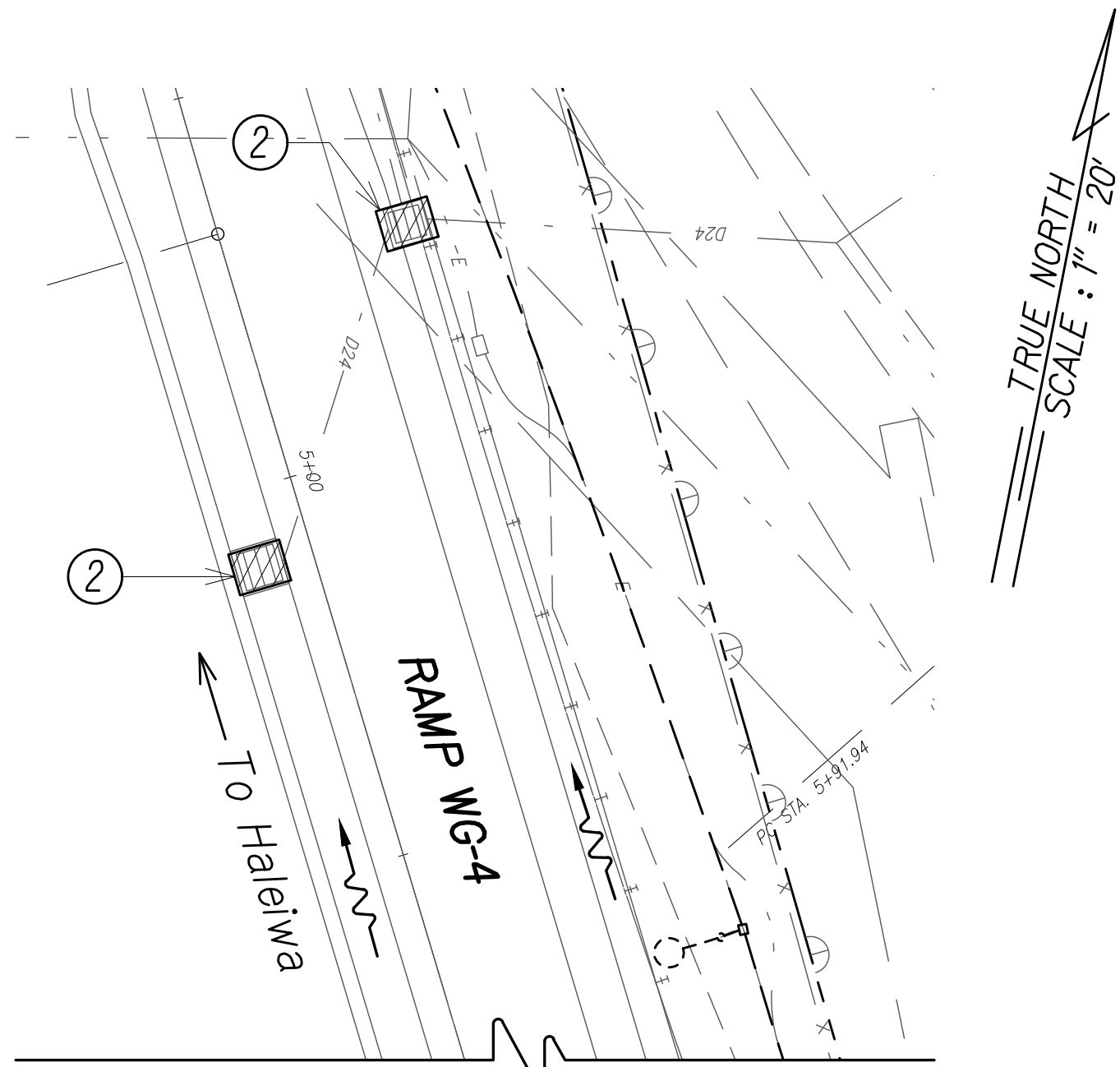
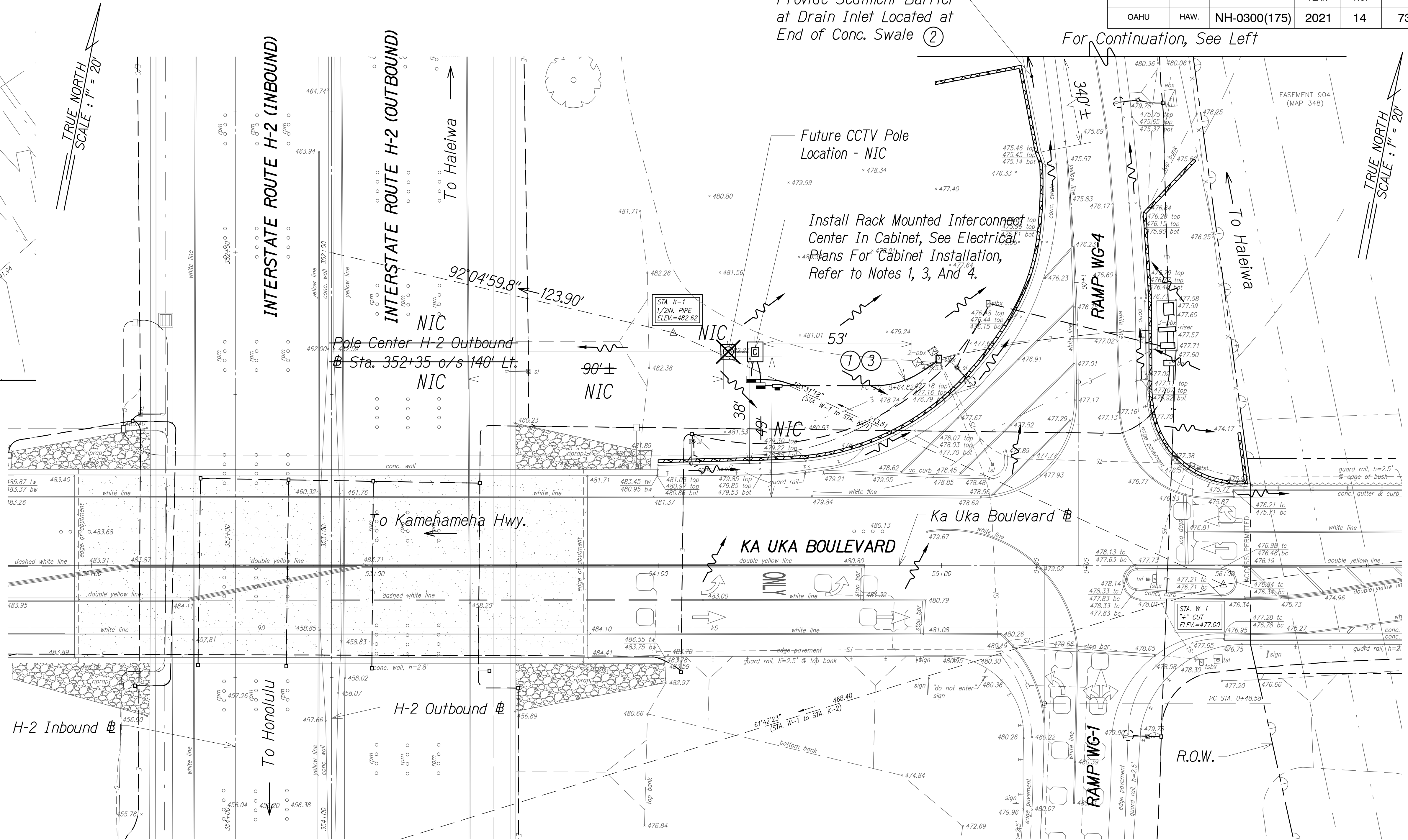


| DIST. NO. | STATE | PROJ. NO. | FISCAL YEAR | SHEET NO. | TOTAL SHEETS |
|-----------|-------|--------------|-------------|-----------|--------------|
| OAHU | HAW. | NH-0300(175) | 2021 | 14 | 73 |

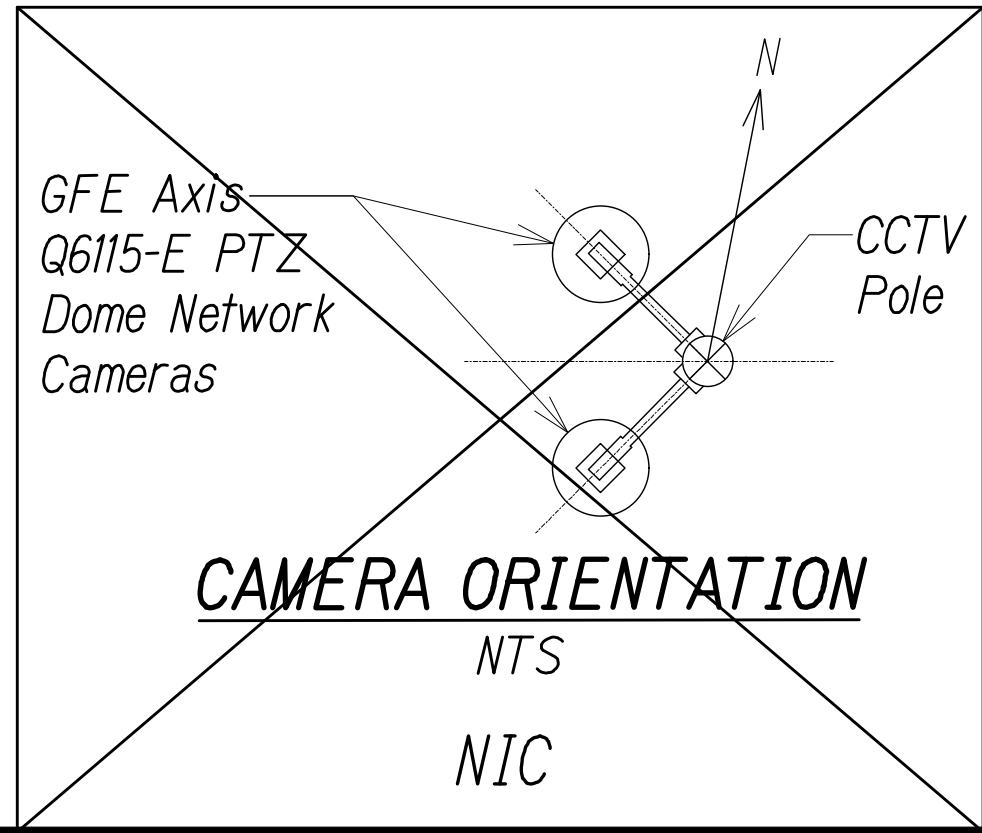


For Continuation, See Right
WAIPIO SITE PLAN
Scale : 1" = 20'

- Notes:**
- See Electrical Plans for electrical and communication service connections.
 - Exist. storm drain inlet or catch basin. Contractor to observe Best Management Practices and take measures required. Protect exist. storm drain inlets and catch basins located downstream of the project site with Best Management Practices. See details on Sheet C-4.
 - Exist. grassed area or landscaping, Contractor to observe Best Management Practices. See detail on Sheet C-4.
 - Avoid exist. irrigation systems.
 - ~~See Structural Plans for details. — NIC~~
 - Sediment and Erosion Control BMP measures shown in the Contract Documents are minimum BMPs requirements and do not constitute an acceptable and/or complete Sediment and Erosion Control Plan. The Contractor shall incorporate additional BMPs based upon their means and methods considering site conditions and construction sequence in accordance with the Contract Documents including applicable permit document requirements. Cost shall be included in Pay Item 209.0100, Installation, Maintenance, Monitoring, and Removal of BMP.



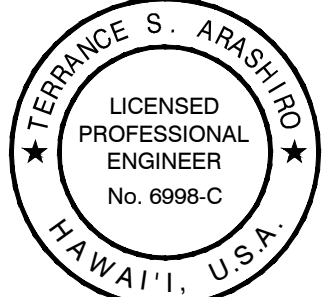
WAIPIO SITE PLAN
Scale : 1" = 20'



LEGEND:

- CCTV Pole - NIC
- Equipment Cabinet
- Temporary Fiber Roll
- Flow Direction

LINE IS 2 INCHES AT FULL SIZE
(if not 2 inches: scale accordingly)



THIS WORK WAS PREPARED BY ME OR UNDER MY SUPERVISION AND CONSTRUCTION OF THIS PROJECT WILL BE UNDER MY OBSERVATION AS DEFINED IN H&R TITLE 16, CHAPTER 115, RULES OF THE BOARD OF PROFESSIONAL ENGINEERS, ARCHITECTS AND SURVEYORS, STATE OF HAWAII.

[Signature]
APRIL 30, 2024
LIC. EXP. DATE

STATE OF HAWAII
DEPARTMENT OF TRANSPORTATION
HIGHWAYS DIVISION

WAIPIO CABINET SITE PLAN

FREEWAY MANAGEMENT SYSTEM
Phase 3A
Federal Aid Project No. NH-0300(175)

Scale: As Shown Date: October 15, 2021

SHEET No. C-3 OF 4 SHEETS

| | |
|---------------|------|
| ORIGINAL PLAN | DATE |
| DRAWN BY | |
| DESIGNED BY | |
| NOTED BY | |
| CHECKED BY | |
| No. | |

PNX\2016\16-048\16-048-1--H2 PKG\DWG-C-3 WAIPIO CABINET SITE PLAN.DWG Apr 20, 2022-3:53 PM