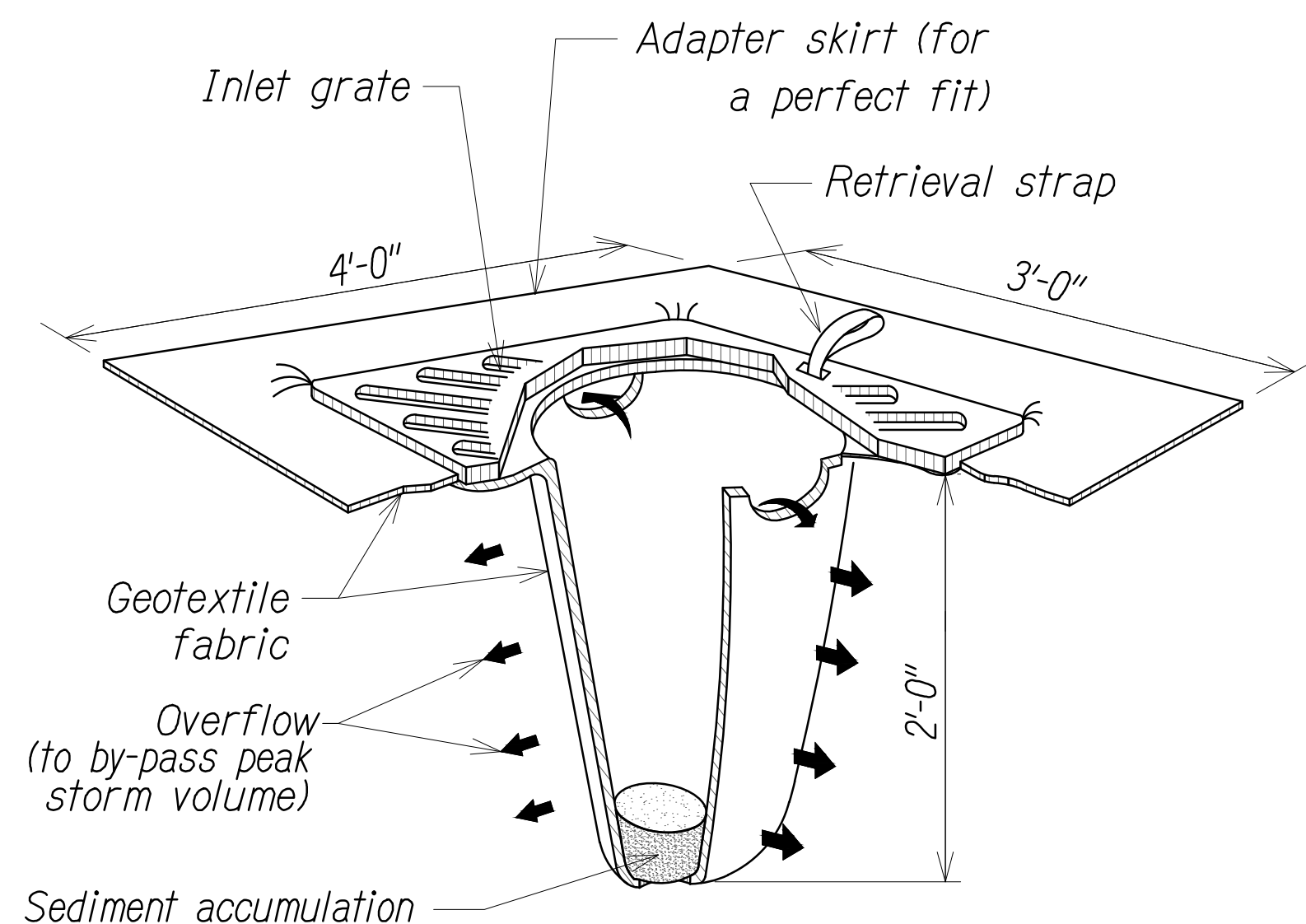




Attachment D

BMP Details- SWPPP



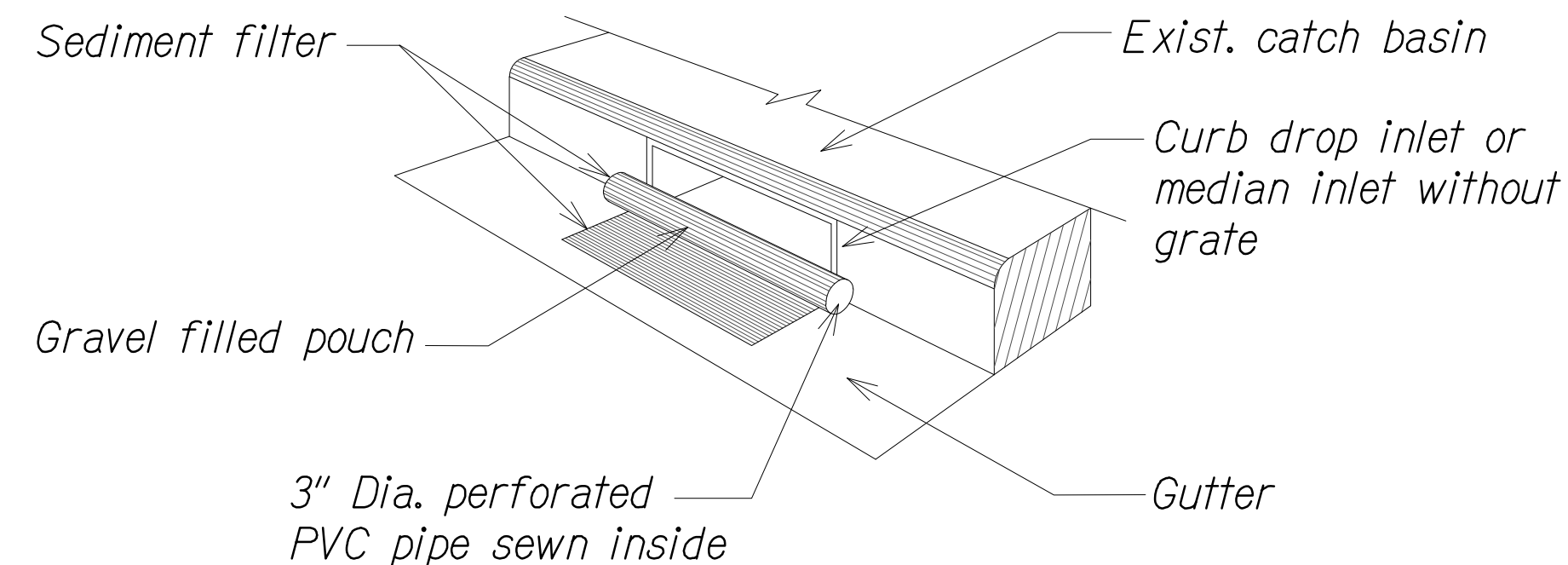
- NOTES: 1. All inlet protection on road shoulders shall be protected from damage by vehicular traffic with Type II barricades with amber flashers.
2. Contractor shall check the condition of the filter at the beginning and ending of each work day and repair/clean as necessary.

TEMPORARY SEDIMENT BARRIER AT DRAIN INLET

Not To Scale

NOTE:

Contractor to install at all existing catch basins or drain inlets adjacent to and immediately down stream of all work areas.

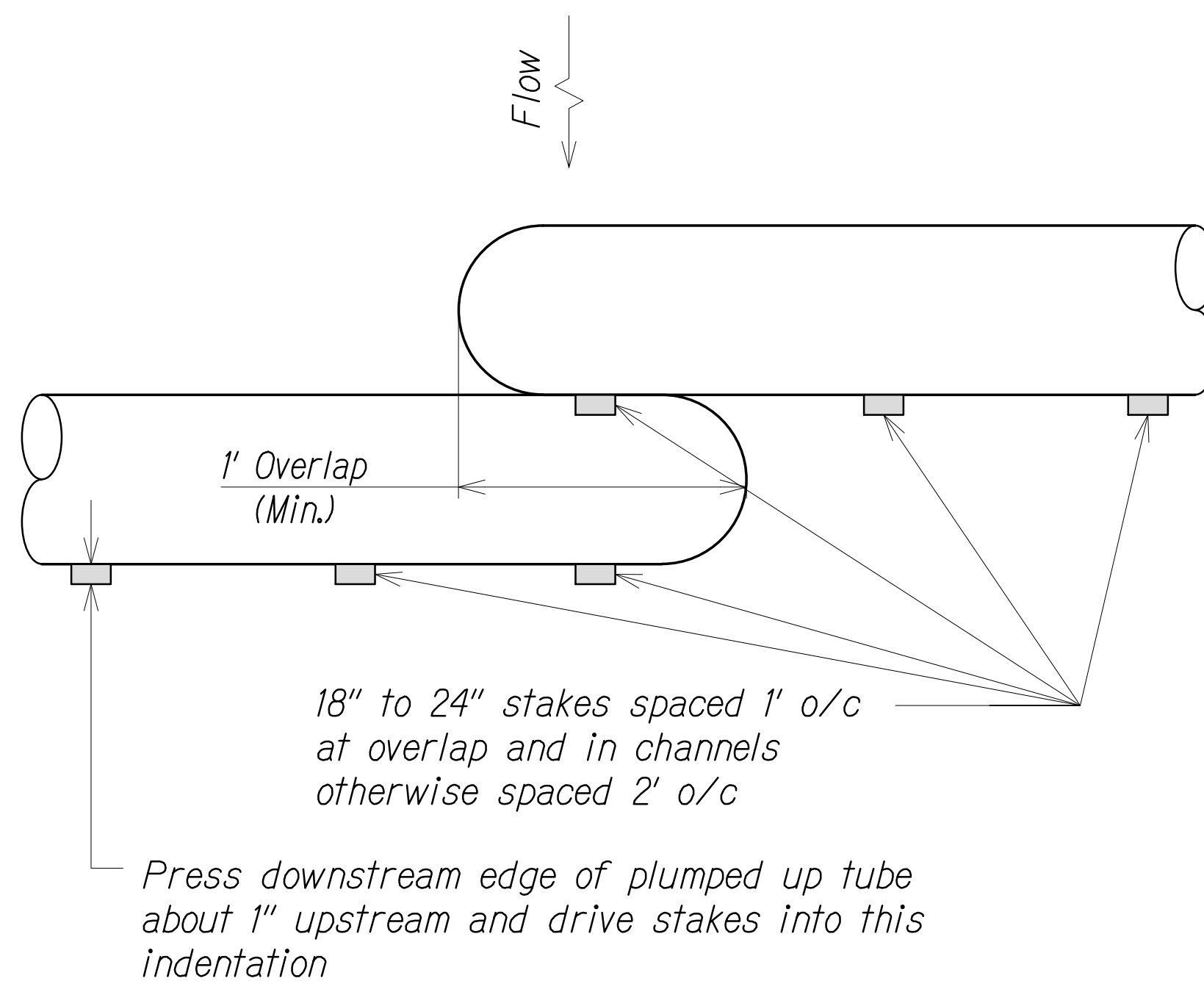


TEMPORARY STORM DRAIN PROTECTION

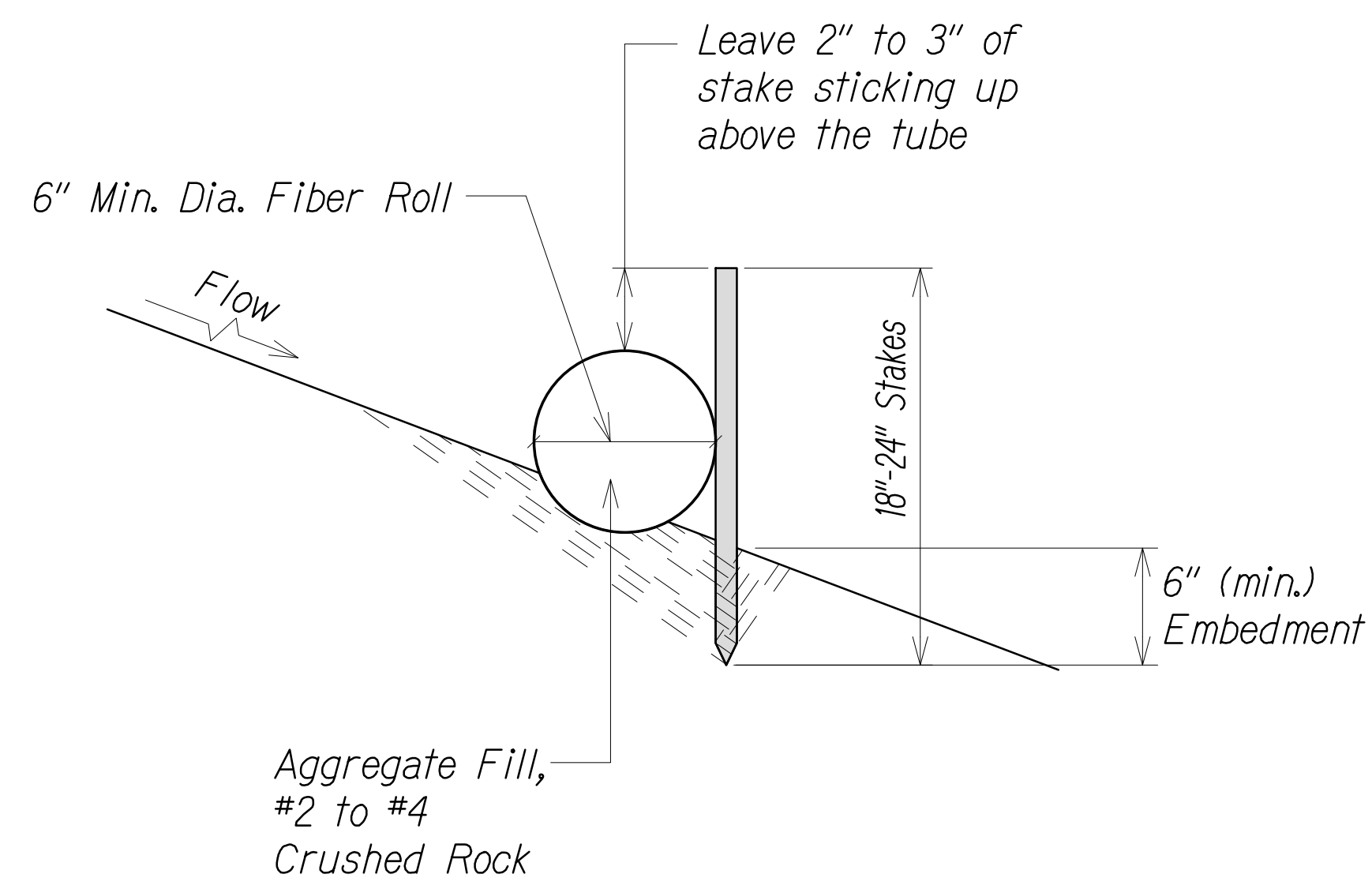
Not To Scale

EROSION CONTROL/BEST MANAGEMENT PRACTICES NOTES:

1. Erosion control measures to be installed prior to start of work, and be maintained until completion of project.
2. Construction BMPs shall be inspected weekly, and within 24 hours of any rainfall event of 0.25 inches or greater in a 24 hour period if drainage system discharges into impaired waters. The Contractor shall submit a copy of the SWPPP Inspection and Maintenance Report Form to the Engineer within 24 hours of the inspection.
3. Remove filter at times of above normal rainfall events and replace them when the event has passed.
4. The final lift of each day's work shall be compacted to prevent erosion of fill material.
5. Good housekeeping shall be utilized to ensure protection of roadways from mud, dirt, and debris.
6. The Contractor shall ensure that all tires of construction vehicles are sufficiently cleaned off so that dirt or debris is not tracked off the construction site. Washing off tires with water will not be acceptable unless the runoff is contained and does not enter the storm drain system.
7. Any dirt or grassed area disturbed shall be restored by seeded hydromulch.
8. At the end of construction operations and at the completion of the project, Contractor shall inspect all catch basin, drain inlet and drain manhole surrounding the project site. Any accumulated sediment and debris found in storm drain structures shall be removed. Please note that flushing into the drain structures is prohibited.
9. Contractor shall submit proposed storm drain and sediment barrier for acceptance prior to installation.
10. Sediment and Erosion Control BMP measures shown in the Contract Documents are minimum BMP requirements and do not constitute a complete Sediment and Erosion Control Plan. the Contractor shall incorporate additional BMPs based upon means and methods considering site conditions and construction sequence in accordance with the Contract Documents including applicable permit document requirements. Costs shall be included in lump sum Pay Item No. 209.011, Installation, Maintenance, Monitoring, and Removal of BMP and shall not be paid for separately.
11. Remove accumulated sediment when depth reaches $\frac{1}{3}$ the barrier height.
12. At completion of project, filter socks material including the compost shall be removed from site and disposed of properly.



PLAN



SECTION

TEMPORARY FIBER ROLL DETAIL

Not To Scale

FREEWAY MANAGEMENT SYSTEM
PHASE 3A
FEDERAL AID PROJECT NO. NH-0300(175)

AUSTIN, TSUTSUMI, & ASSOC., INC.
ENGINEERS, SURVEYORS • HONOLULU, HAWAII

SITE AND BMP DETAILS PLAN

EXHIBIT

9