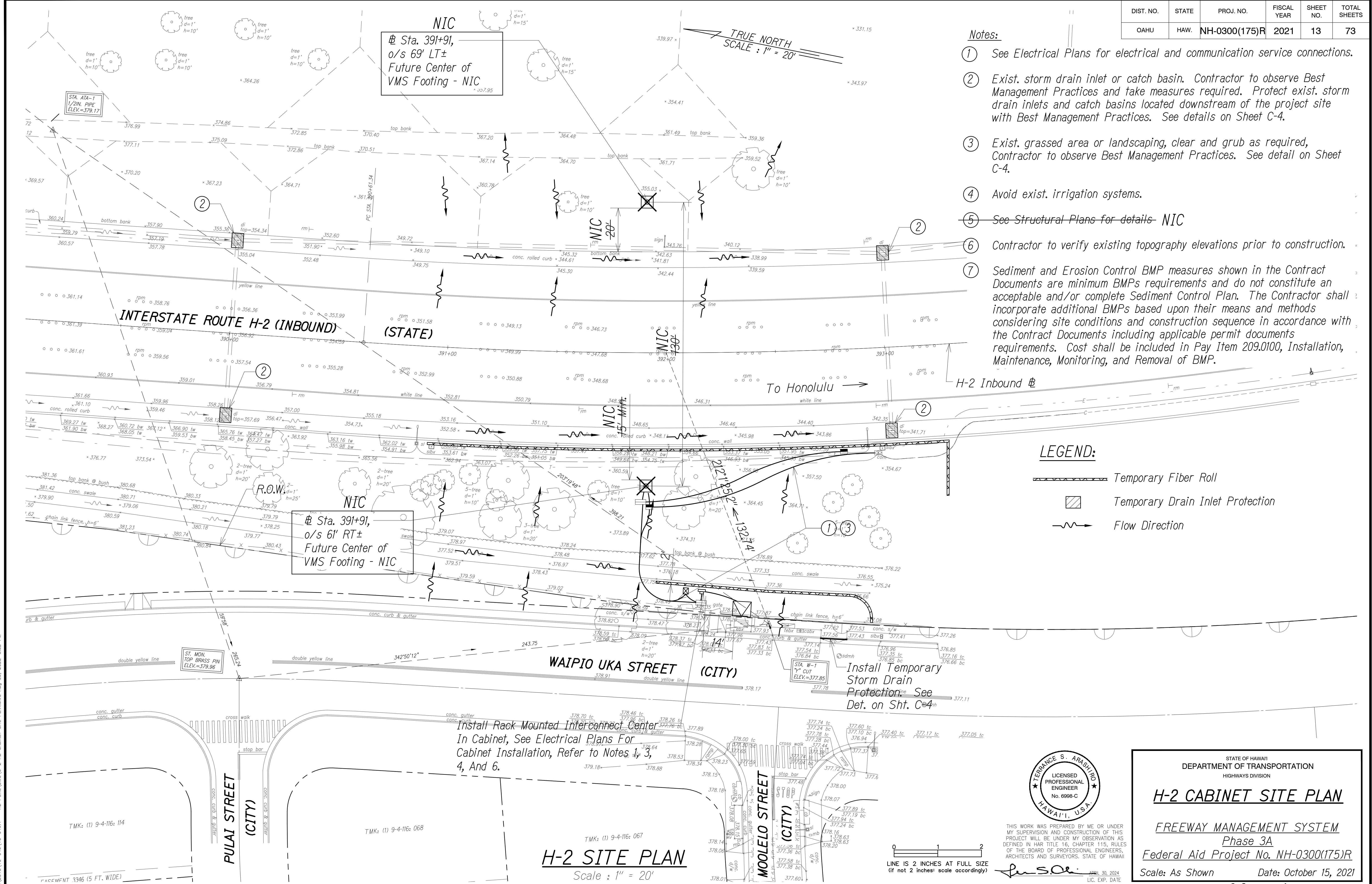


DIST. NO.	STATE	PROJ. NO.	FISCAL YEAR	SHEET NO.	TOTAL SHEETS
OAHU	HAW.	NH-0300(175)R	2021	13	73



- Notes:
- See Electrical Plans for electrical and communication service connections.
 - Exist. storm drain inlet or catch basin. Contractor to observe Best Management Practices and take measures required. Protect exist. storm drain inlets and catch basins located downstream of the project site with Best Management Practices. See details on Sheet C-4.
 - Exist. grassed area or landscaping, clear and grub as required, Contractor to observe Best Management Practices. See detail on Sheet C-4.
 - Avoid exist. irrigation systems.
 - See Structural Plans for details - NIC
 - Contractor to verify existing topography elevations prior to construction.
 - Sediment and Erosion Control BMP measures shown in the Contract Documents are minimum BMPs requirements and do not constitute an acceptable and/or complete Sediment Control Plan. The Contractor shall incorporate additional BMPs based upon their means and methods considering site conditions and construction sequence in accordance with the Contract Documents including applicable permit documents requirements. Cost shall be included in Pay Item 209.0100, Installation, Maintenance, Monitoring, and Removal of BMP.

- LEGEND:
- Temporary Fiber Roll
 - Temporary Drain Inlet Protection
 - Flow Direction

THIS WORK WAS PREPARED BY ME OR UNDER MY SUPERVISION AND CONSTRUCTION OF THIS PROJECT WILL BE UNDER MY OBSERVATION AS DEFINED IN H.A.R. TITLE 16, CHAPTER 115, RULES OF THE BOARD OF PROFESSIONAL ENGINEERS, ARCHITECTS AND SURVEYORS, STATE OF HAWAII.

DATE: October 15, 2021

STATE OF HAWAII
DEPARTMENT OF TRANSPORTATION
HIGHWAYS DIVISION

H-2 CABINET SITE PLAN

FREEWAY MANAGEMENT SYSTEM
Phase 3A

Federal Aid Project No. NH-0300(175)R

Scale: As Shown Date: October 15, 2021

SHEET No. C-2 OF 4 SHEETS