

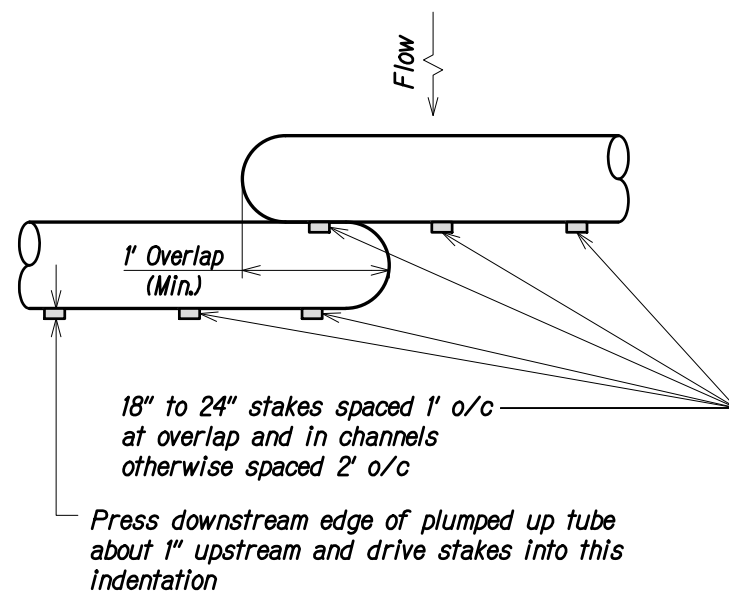
- NOTES:
1. All inlet protection on road shoulders shall be protected from damage by vehicular traffic with Type II barricades with amber flashers.
  2. Contractor shall check the condition of the filter at the beginning and ending of each work day and repair/clean as necessary.

### TEMPORARY SEDIMENT BARRIER AT DRAIN INLET

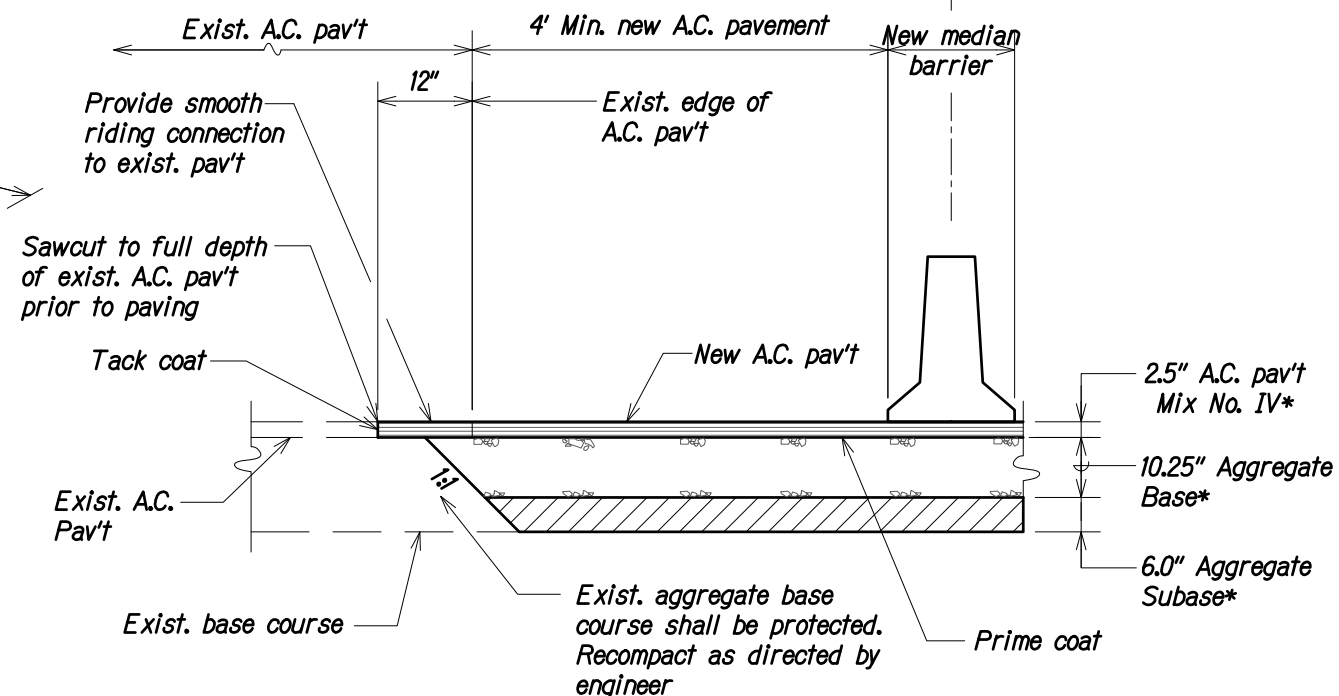
Not To Scale

#### NOTE:

Contractor to install at all existing catch basins or drain inlets adjacent to and immediately down stream of all work areas.

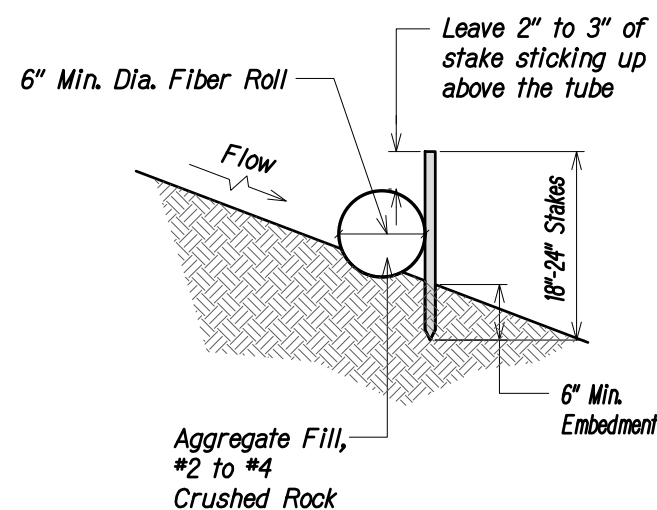


#### PLAN



### A.C. PAVEMENT RESTORATION DETAIL AT MEDIAN BARRIER

Not To Scale



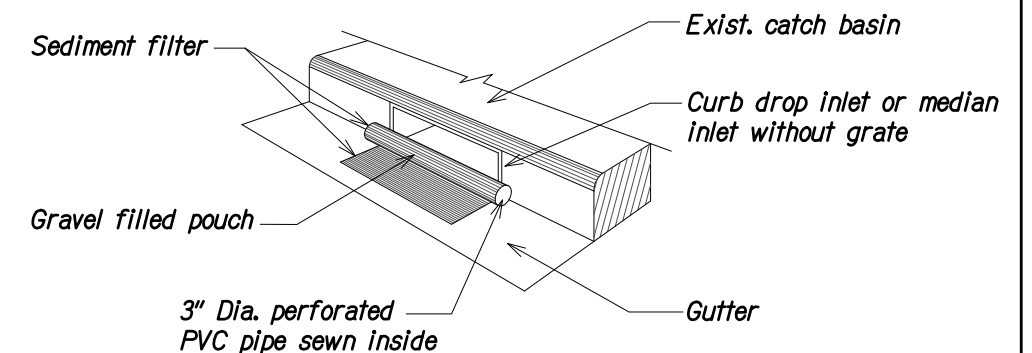
#### SECTION

### TEMPORARY FIBER ROLL DETAIL

Not To Scale

### EROSION CONTROL/BEST MANAGEMENT PRACTICES NOTES:

1. Erosion control measures to be installed prior to start of work, and be maintained until completion of project.
2. Contractor to periodically inspect catch basin filter especially during heavy rainfall.
3. Remove filter at times of above normal rainfall events and replace them when the event has passed.
4. The final lift of each day's work shall be compacted to prevent erosion of fill material.
5. Good housekeeping shall be utilized to ensure protection of roadways from mud, dirt, and debris.
6. The Contractor shall ensure that all tires of construction vehicles are sufficiently cleaned off so that dirt or debris is not tracked off the construction site. Washing off tires with water will not be acceptable unless the runoff is contained and does not enter the storm drain system.
7. Any dirt or grassed area disturbed shall be restored by seeded hydromulch.
8. At the end of construction operations and at the completion of the project, Contractor shall inspect all catch basin, drain inlet and drain manhole surrounding the project site. Any accumulated sediment and debris found in storm drain structures shall be removed. Please note that flushing into the drain structures is prohibited.
9. Contractor shall submit proposed storm drain and sediment barrier for acceptance prior to installation.



### TEMPORARY STORM DRAIN PROTECTION

Not To Scale

FREEWAY MANAGEMENT SYSTEM,  
PHASE 2A  
FEDERAL AID PROJECT NO. NH-0300(160)

**ATA** AUSTIN, TSUTSUMI, & ASSOC., INC.  
ENGINEERS, SURVEYORS • HONOLULU, HAWAII

EROSION CONTROL DETAILS

EXHIBIT

49