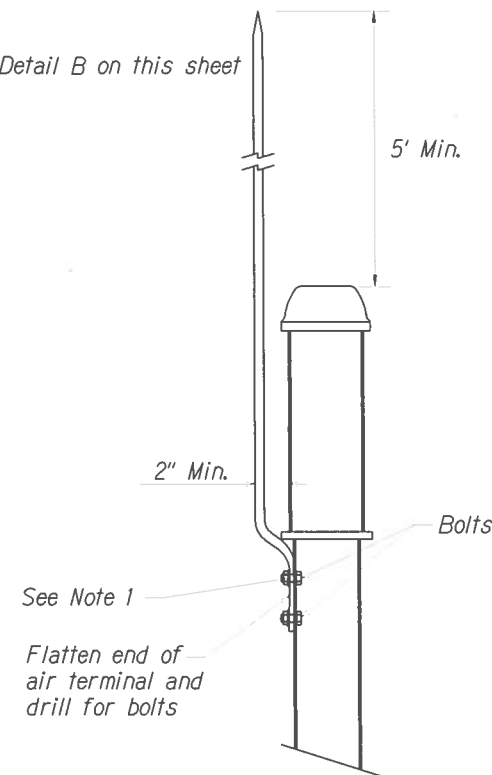
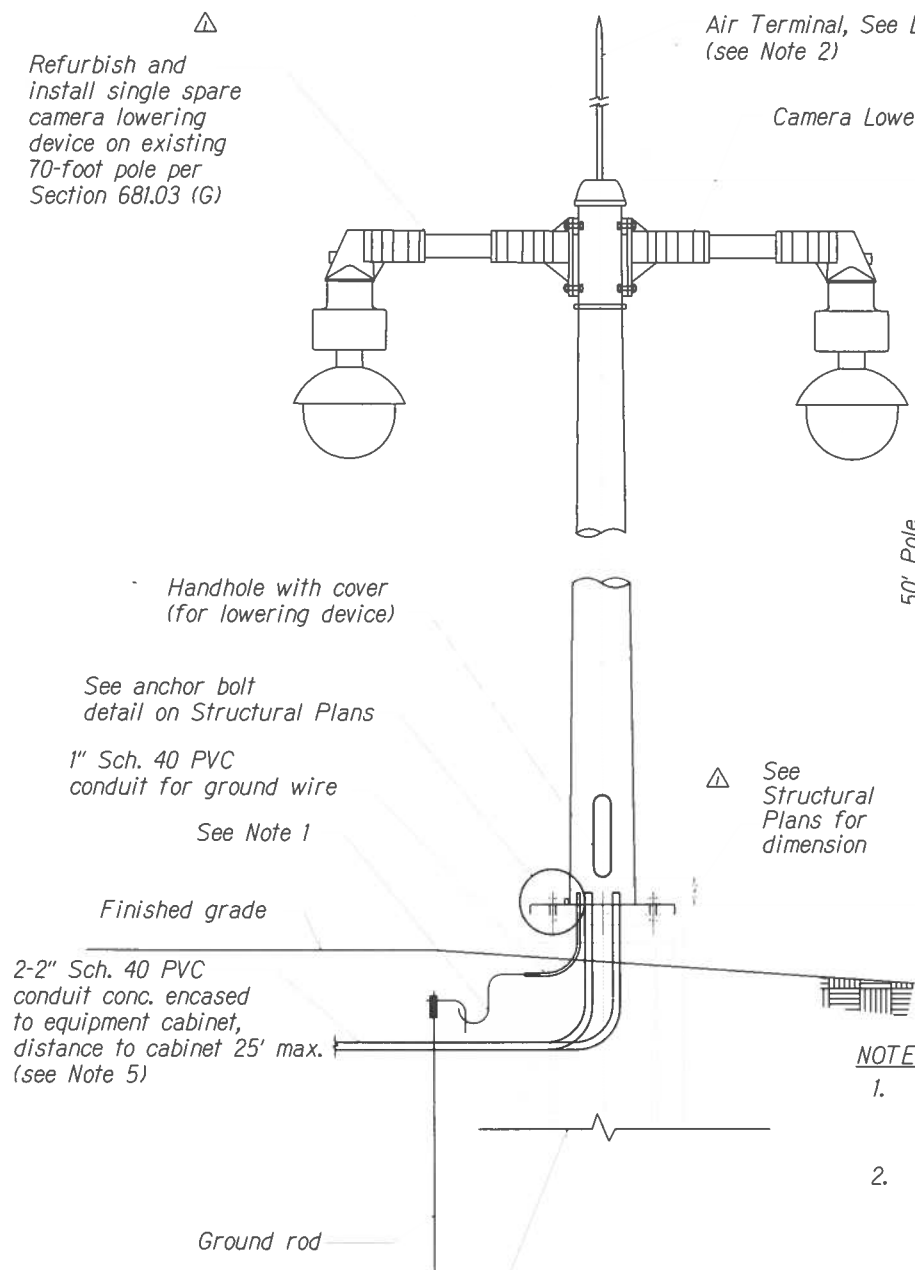


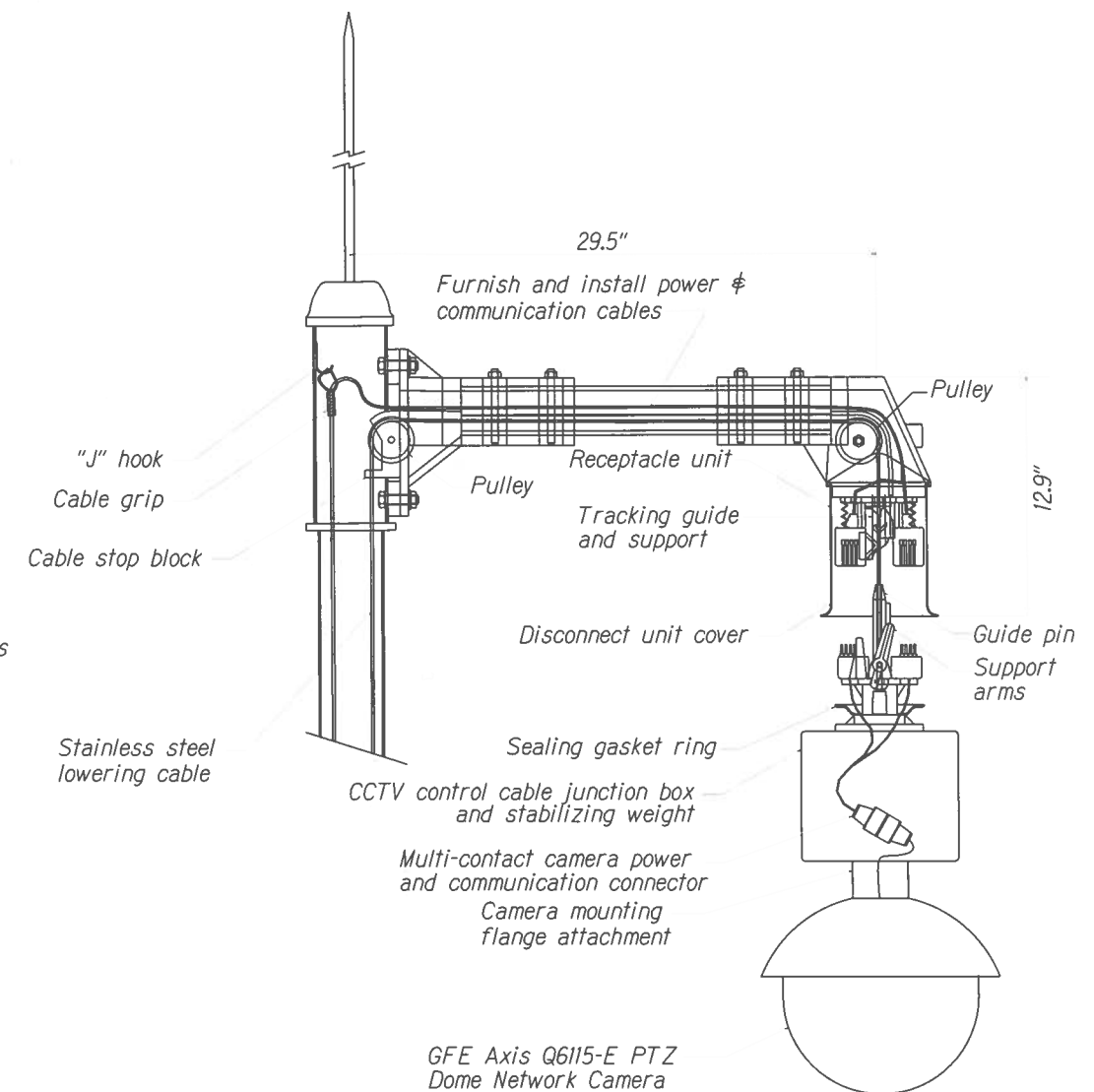
DIST. NO.	STATE	PROJ. NO.	FISCAL YEAR	SHEET NO.	TOTAL SHEETS
OAHU	HAW.	NH-0300(160)	2018	ADD. 26	186



**DETAIL A**  
**AIR TERMINAL**  
Not To Scale

**NOTES:**

- The Contractor shall use an AWG #6 solid, bare copper wire to bond the pole to the ground rod(s), and AWG #2 solid, bare copper wire from air terminal to ground.
- Air terminal as required to provide lightning protection shall be included in all shop drawings submitted for approval. The tip of the air terminal shall be ground to a point. See Special Provisions for additional requirements.
- See Special Provisions for cabling requirements.
- The Contractor shall ensure that the orientation of the camera lowering device is aligned with that of the bolt circle pattern to be positioned to match the orientation detail on the site plans. This shall be approved by the Engineer prior to installation.
- Refer to State of Hawaii, Department of Transportation, Highways Division, Standard Plans 2008, TE-36 for trench details.



**DETAIL B**  
**CAMERA LOWERING DEVICE AND GFE CCTV CAMERA**  
Not To Scale

NO.	DATE	REVISION
1	11/08/18	Removed dimension and refer to Structural Plans. Note added to lowering device.



"THIS WORK WAS PREPARED BY ME OR UNDER MY SUPERVISION AND CONSTRUCTION OF THIS PROJECT WILL BE UNDER MY OBSERVATION AS DEFINED IN HAWAII TITLE 10, CHAPTER 115, RULES OF THE BOARD OF PROFESSIONAL ENGINEERS, ARCHITECTS AND SURVEYORS, STATE OF HAWAII."

LINE IS 2 INCHES AT FULL SIZE  
(if not 2 inches: scale accordingly)

DATE: June 29, 2018  
LIC. EXP. DATE:

STATE OF HAWAII DEPARTMENT OF TRANSPORTATION HIGHWAYS DIVISION
<b>CCTV POLE DETAILS</b>
Freeway Management System Phase 2 Federal Aid Project No. NH-0300(160)
Scale: As Shown Date: June 29, 2018
SHEET No. C7.1 OF 25 SHEETS