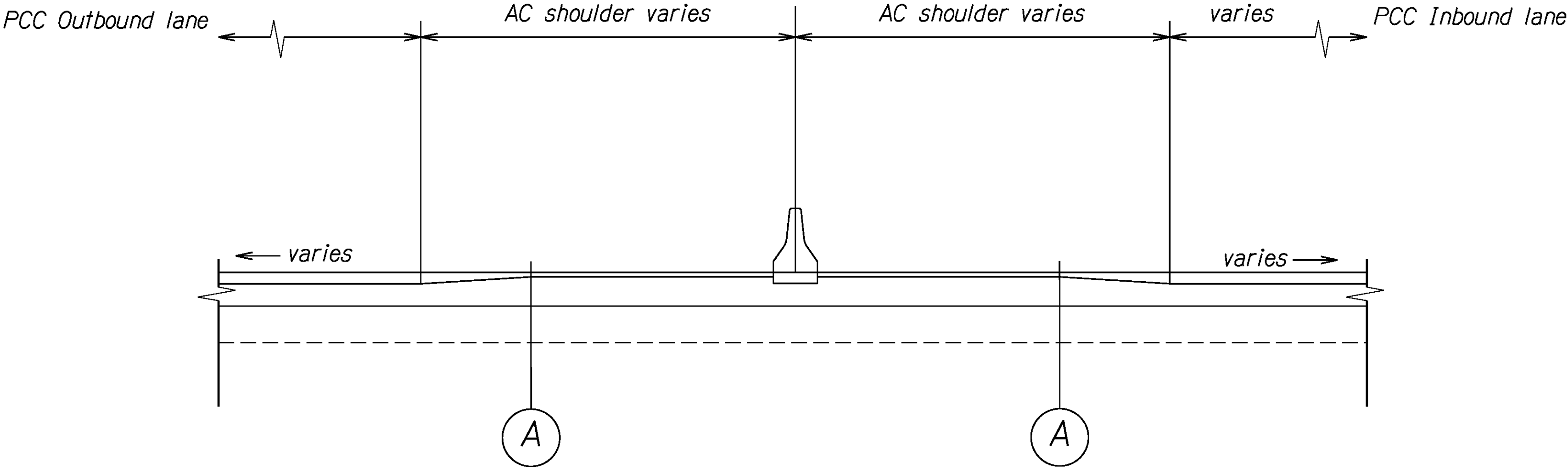
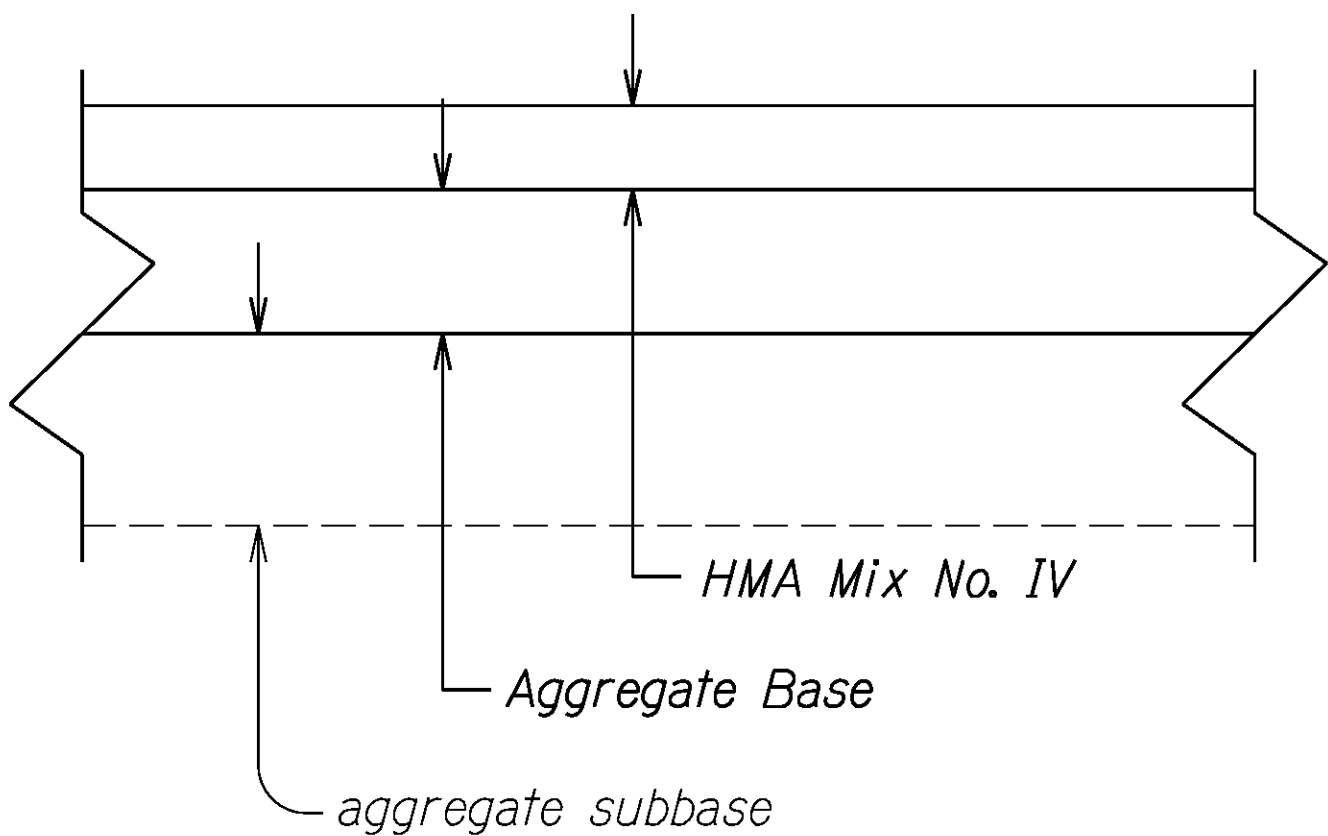


| FED. ROAD DIST. NO. | STATE | FED. AID PROJ. NO. | FISCAL YEAR | SHEET NO. | TOTAL SHEETS |
|---------------------|-------|--------------------|-------------|-----------|--------------|
| HAWAII | HAW. | NH-STP-0300(164) | 2021 | ADD.10 | 119 |

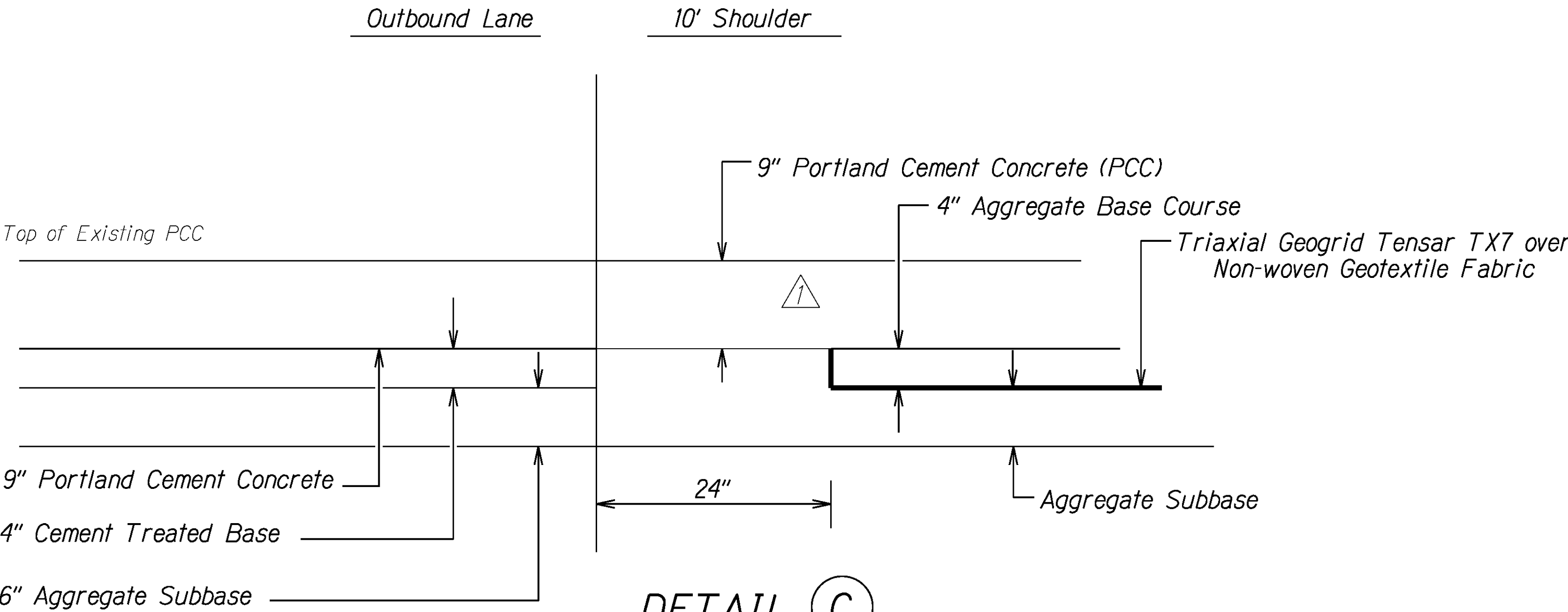


INTERSTATE ROUTE H-2
TYPICAL MEDIAN SECTION

Sta. 51+00 to # Sta. 190+00, # Sta. 299+00 to # Sta. 347+00, # Sta. 366+00 to # Sta. 404+00
Not to Scale



DETAIL (A)
Not to Scale



DETAIL (C)

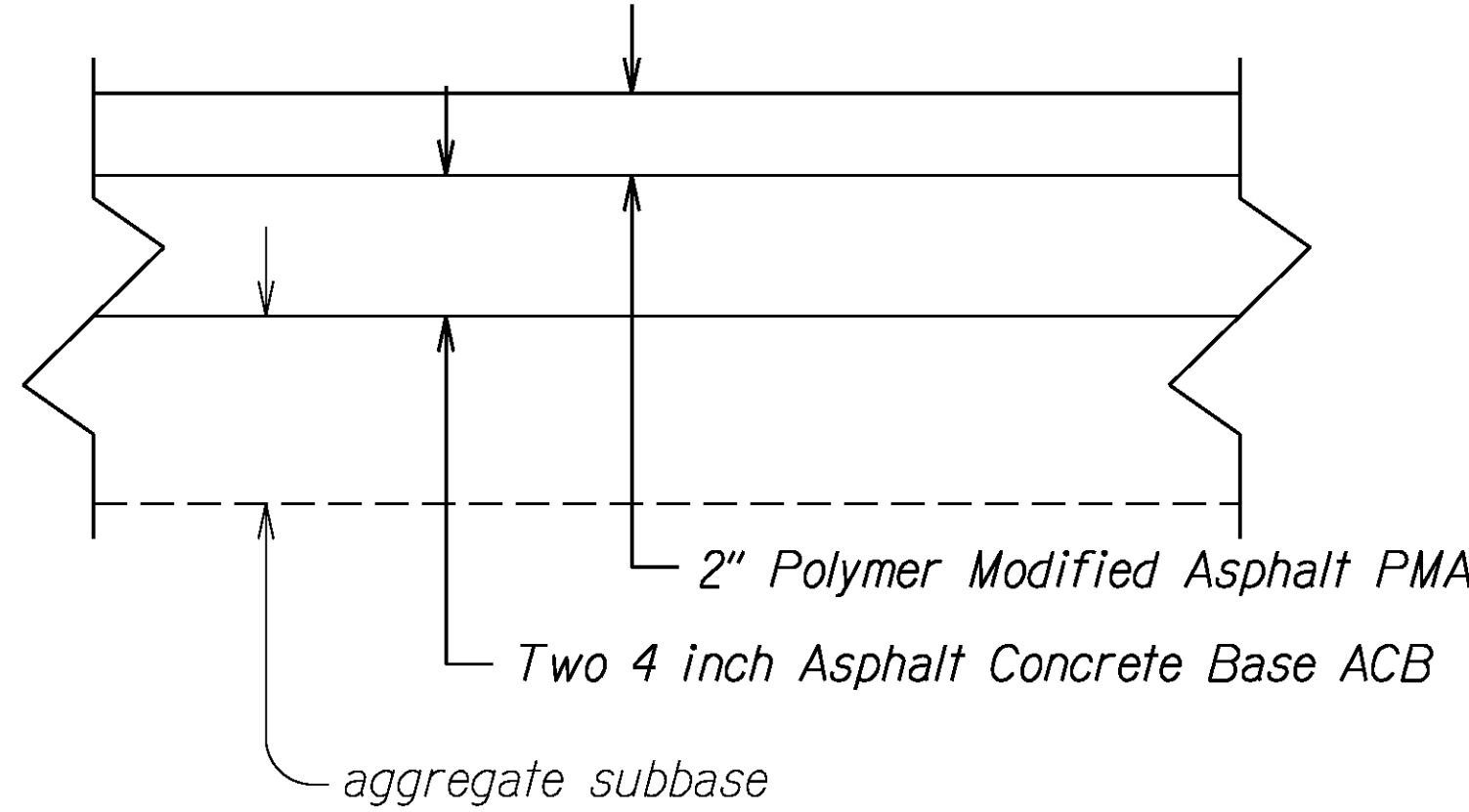
INTERSTATE ROUTE H-2 OUTBOUND SHOULDER
H-2 # Sta. 74+60± to H-2 # Sta. 122+50±
Not to Scale

Note:

1. Excavate 9 inches Below Grade within 24 inches of the PCC Travel Lane.
2. Excavate the Remainder of the 10-foot Wide Shoulder to 13 inches Below Grade.
3. Place a Non-woven Geotextile Fabric (Standard Specification 716.02) on the Subgrade.
4. Place a Triaxial Geogrid Tensar TX7 or Equivalent Over the Non-woven Geotextile Fabric.
5. Place 4 inches of Aggregate Base Course Compacted to at Least 90 Percent of it's Maximum dry Density (AASHTO T 180). Maintain existing grades
6. Place 9 inches PCC With Tie Bars to the Existing PCC Per Standard Plans and with Dowel Bars at the Transverse Joints Per Standard Plans.

Note:

See Roadway Plans and Schedule for Pavement Structure to be One of the Following:
1. 2½' Removal and 2½" HMA Mix No. IV.
2. Item 304.02 Aggregate Base per Engineer's Direction



DETAIL (B)

RAMP C SHOULDER
H-2 # Sta. 71+72 to H-2 # Sta. 72+68
Not to Scale

| | | |
|---------------|-------------------|------|
| ORIGINAL PLAN | SURVEY PLOTTED BY | DATE |
| NOTE BOOK | DRAWN BY | |
| No. 2015 | DESIGNED BY | |
| | CHECKED BY | |



4/16/21

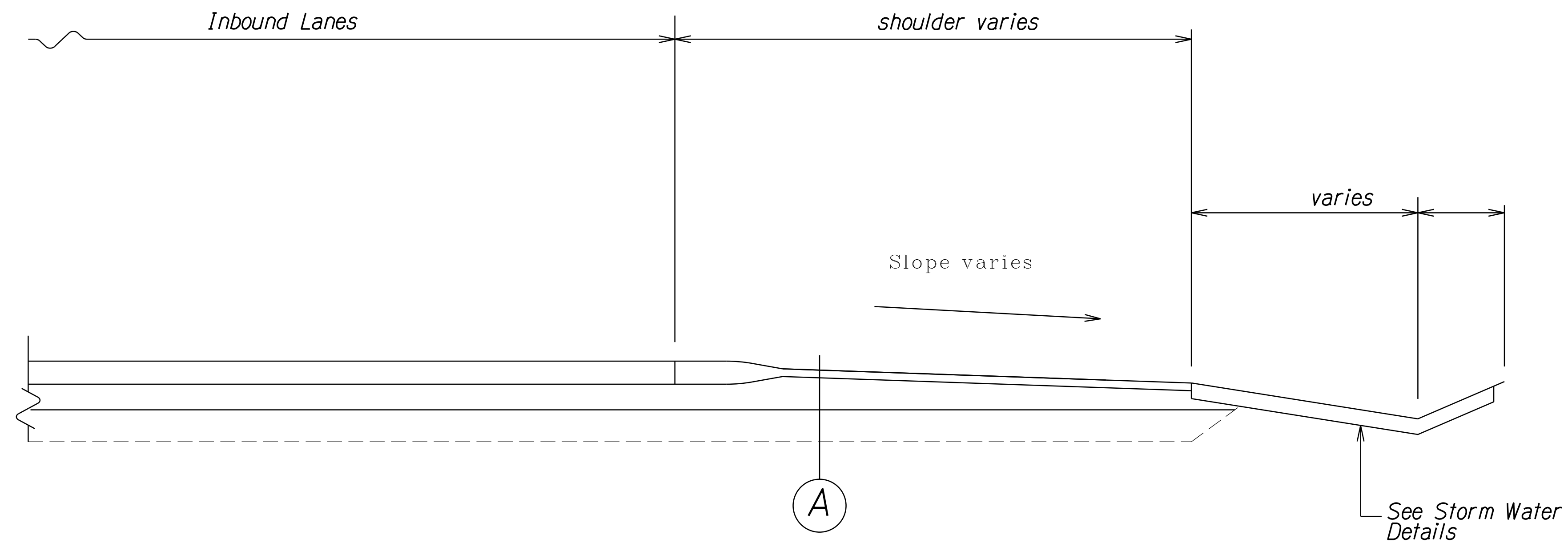
Removed Note of Triaxial Geogrid Tensar TX7 over Non-Woven Geotextile Fabric under PCC

DATE

REVISION

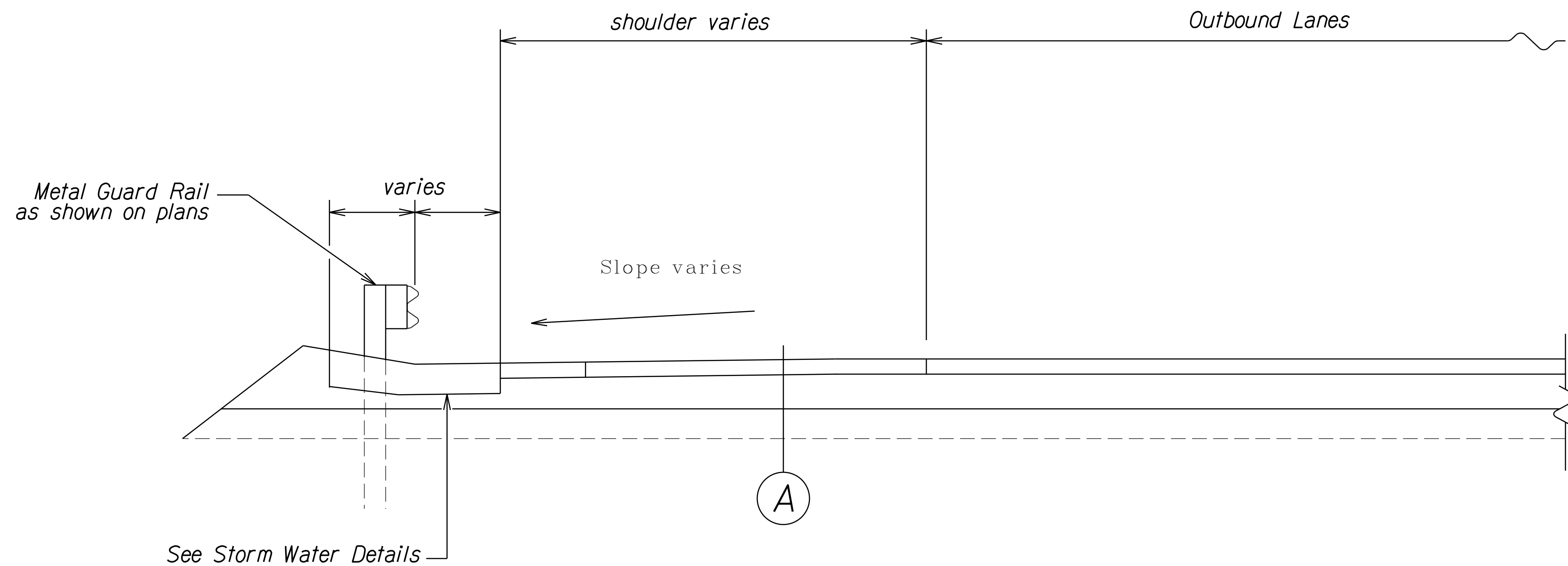
| |
|--|
| STATE OF HAWAII DEPARTMENT OF TRANSPORTATION HIGHWAYS DIVISION TYPICAL SHOULDER SECTION <u>INTERSTATE ROUTE H-2 and</u> <u>MOANALUA FREEWAY, PHASE 2</u> <u>Guardrail and Shoulder Improvements</u> <u>Federal Aid Project No. NH-STP-0300(164)</u> Scale: As Shown Date: August, 2020 SHEET No. 1 OF 2 SHEETS |
|--|

| FED. ROAD DIST. NO. | STATE | FED. AID PROJ. NO. | FISCAL YEAR | SHEET NO. | TOTAL SHEETS |
|------------------------|-------|-----------------------|----------------|--------------|-----------------|
| HAWAII | HAW. | NH-STP-0300(164) | 2021 | 11 | 119 |



INTERSTATE ROUTE H-2
TYPICAL SHOULDER SECTION
Not to Scale

Note:
See Roadway Plans and Schedule for Pavement
Structure to be One of the Following:
1. 2½' Removal and 2½" HMA Mix No. IV.



INTERSTATE ROUTE H-2
TYPICAL SHOULDER SECTION
Not to Scale

| | | |
|------------------|-------------------|------|
| ORIGINAL PLAN | SURVEY PLOTTED BY | DATE |
| NOTE BOOK | DRAWN BY | |
| N. | DESIGNED BY | |
| | QUANTITIES BY | |
| | CHECKED BY | |

| |
|--|
| STATE OF HAWAII DEPARTMENT OF TRANSPORTATION HIGHWAYS DIVISION |
| <u>TYPICAL SHOULDER SECTION</u> |
| <u>INTERSTATE ROUTE H-2 and</u> <u>MOANALUA FREEWAY, PHASE 2</u> |
| <u>Guardrail and Shoulder Improvements</u> |
| <u>Federal Aid Project No. NH-STP-0300(164)</u> |
| Scale: NTS Date: August, 2020 |
| SHEET No. 2 OF 2 SHEETS |