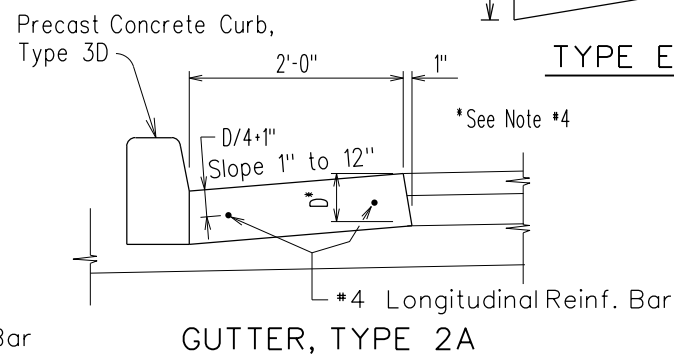
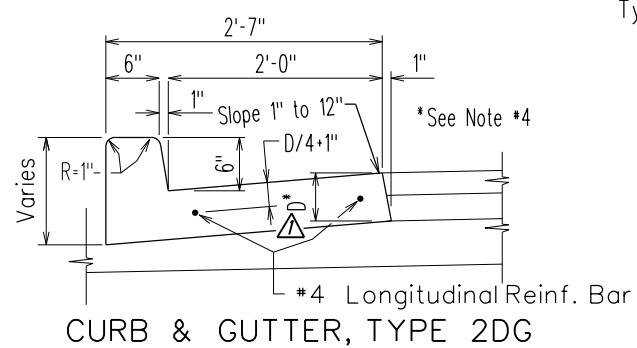
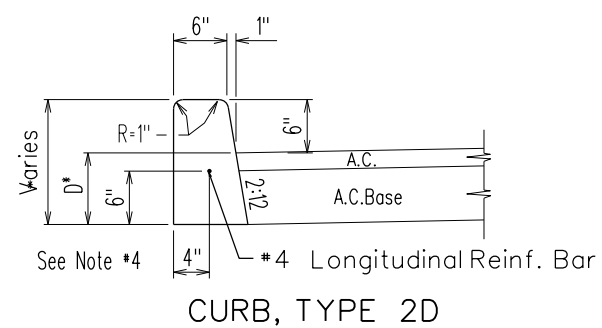
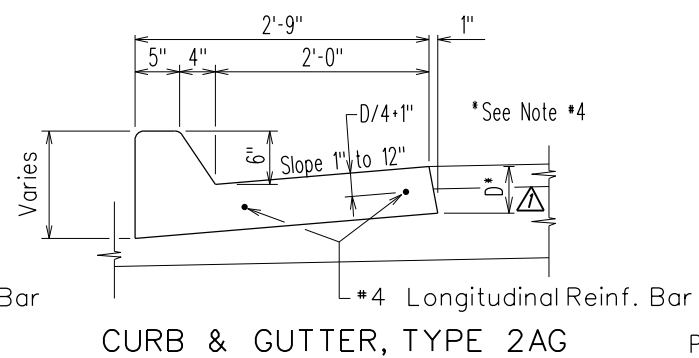
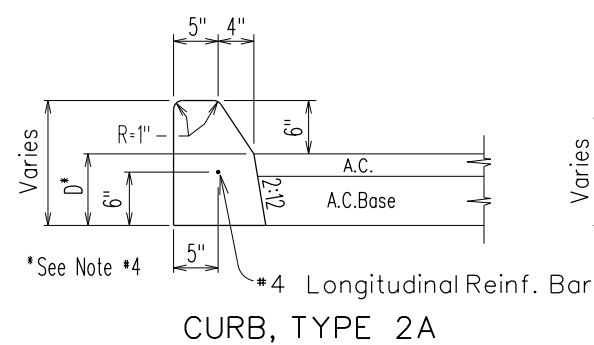
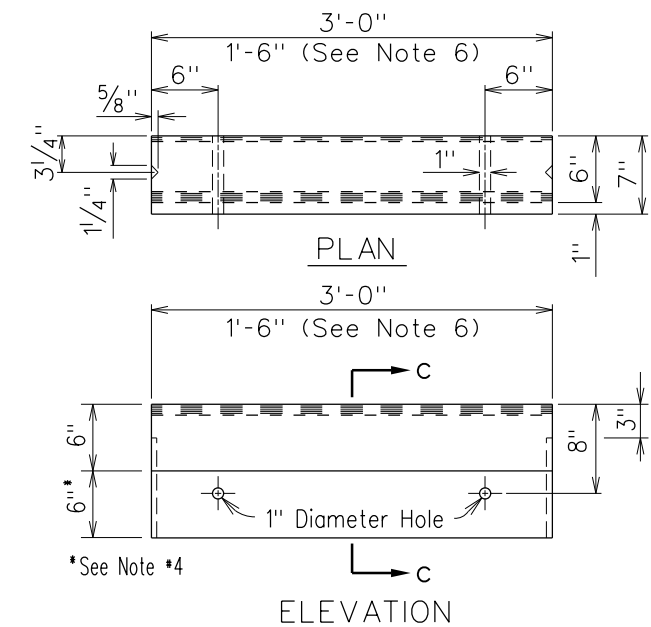
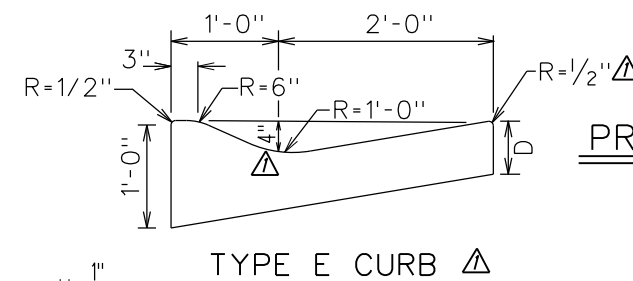


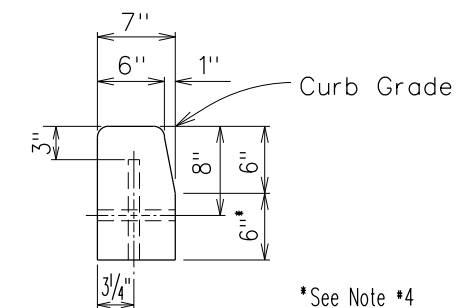
CAST-IN-PLACE CURB & GUTTER
CONSTRUCTION AND CONTRACTION JOINT DETAIL



- Note:**
1. Cast-In-Place P.C.C. Gutters shall be longitudinal broom finished.
 2. Curb, Type 2A, Curb & Gutter, Type 2AG, are to be used only for constructing short segments of existing curbs and/or gutters of the same type.
 3. The top of all types of concrete curbs, including driveway curbs shall be longitudinally broom finished.
 4. For A.C. pavement areas, D equals to thickness of A.C.+A.C.Base but not less than 10". For P.C.C. pavement areas, D equals to thickness of P.C.C. pavement. (For P.C.C. pavement, see also D-22)
 5. Concrete shall be Class A..
 6. For curb returns use 1'-6" pre-cast concrete curbs.
 7. Drawings are not to scale.
 8. Expansion joints shall be installed prior to concrete placement and at a maximum spacing of 50.0'.



CURB, TYPE 6
BITUMINOUS CURB



01/27/17	Add Note 8.	
	Replace 6" Gutter Height with D.	Added Type E Curb.
DATE	REVISION	APP'D.

CAST-IN-PLACE CONCRETE CURBS AND/OR GUTTERS