

CURB RAMP AND SIDEWALK NOTES:

- These typical details are intended as curb ramp guidelines for design and construction. These guidelines shall not replace site specific curb ramp plans.
- A 2% maximum cross slope shall be maintained in the direction of pedestrian traffic.
- Subject to field conditions, the Engineer shall determine the final location of curb ramps.
- All pullboxes shall be installed away from the curb ramp and within the sidewalk/unpaved area to the maximum extent feasible.
- Where necessary, existing pullboxes, handholes, manholes, etc. shall be adjusted to match curb ramp grade. Adjustments shall not be paid for separately but shall be considered incidental to the various curb ramp items unless indicated otherwise.
- Transitions from ramps to gutters and roadways shall be flush.
- Curb ramps and sidewalks shall be constructed to eliminate ponding to the maximum extent feasible.
- The pedestrian push button shall meet operational and reach requirements of the American with Disabilities Act Accessibility Guidelines (ADAAG):
 - Forward Reach. The maximum height for forward reach shall be 48".
 - Side Reach. The maximum height for side reach shall be 48".
 - Operation. Controls and operating mechanisms shall be operable with one hand and shall not require tight grasping, pinching, or twisting of the wrist. The force required to activate controls shall be no greater than 5 lbf.
- 1

 The maximum slopes of adjoining gutters or road surface immediately fronting the curb ramp shall not exceed 5%.
- There shall be a 30"x48" level ground surface (2% max. cross slope, both directions) for a forward or side approach, as appropriate, to a pedestrian push button.
- Construction joints are required to join curb ramps with sidewalks.
- Unless otherwise noted, new gutters are required as shown.
- All curb ramps shall be reinforced with 6x6 W1.4/W1.4 welded wire fabric.
- Surface of sidewalks and curb ramps shall be firm, stable, and slip-resistant. This includes the surfaces of pullboxes, valve covers, manhole covers, etc.
- Bed course material is required for curb ramps, sidewalks, and gutters.
- All sidewalks shall provide a minimum clear width of 3'-0" (excluding curb) for pedestrian circulation. If this cannot be met, a minimum 32-inch clear width is allowed for a distance of 24-inches.
- Passing spaces along new sidewalks with 5' clear width or less shall be provided at maximum 200' intervals as required by ADA guidelines. The passing area shall be a minimum 5' wide by 5' long as feasible.
- If possible, install utility poles, fire hydrants, light poles, sign posts, pullboxes, etc. off of sidewalk but within the right-of-way.

- Objects protruding from utility poles and walls adjacent to the sidewalks (i.e. wall mounted fire hydrants, telephones, meters on poles, etc.) shall be mounted to meet the current American with Disabilities Act Accessibility Guidelines (ADAAG) and will be subject to Engineer's approval.
- If a curb ramp is not constructed according to the plans, the Contractor shall reconstruct the curb ramp at no cost to the State. Construction tolerance for Portland Cement Concrete shall be based on 1/4 inch per 10 ft. (±0.2%). Remedial measures will not be accepted.

CURBLESS CROSSWALK NOTES:

- If conditions are encountered on site at crosswalks that do not have curb ramps and sidewalks, the Contractor shall inform the Engineer of these specific conditions and their locations. HDOT will submit construction plans for these specific conditions to the Disability and Communications Access Board (DCAB), indicating paved clear floor spaces with maximum 2% slopes or a Technical Infeasibility Statement pending DCAB approval.

Figure 5.1

1

7/8/22	Revised Note No. 9.
DATE	REVISION

STATE OF HAWAII
DEPARTMENT OF TRANSPORTATION
HIGHWAYS DIVISION

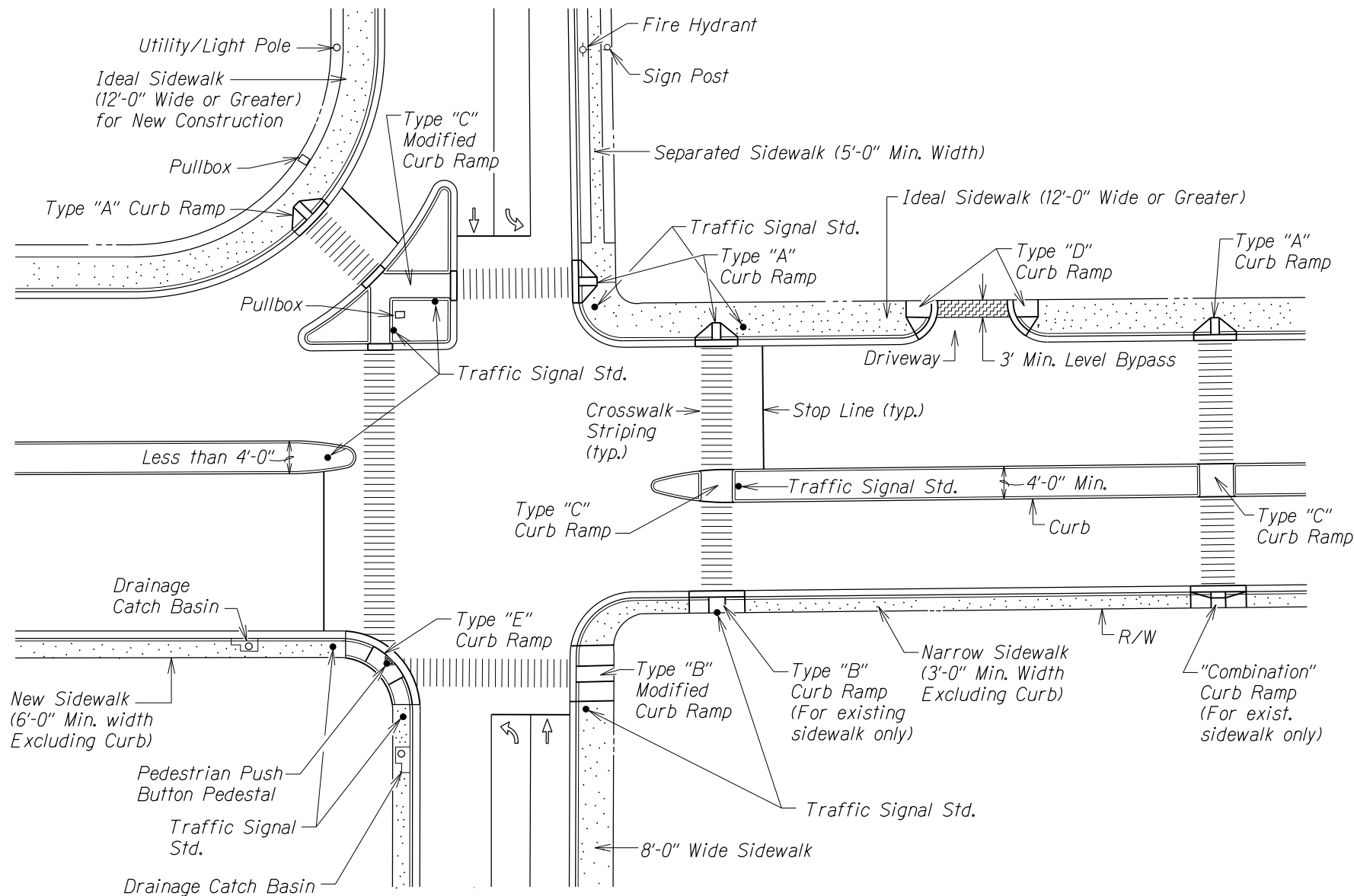
CURB RAMP AND SIDEWALK NOTES
SIDEWALK, CURB & GUTTER REPAIR
AT VARIOUS LOCATIONS
ISLAND OF OAHU
PROJECT NO. HWY-OM-2022-38
Date: June, 2022

SHEET No. 1 OF 9 SHEETS

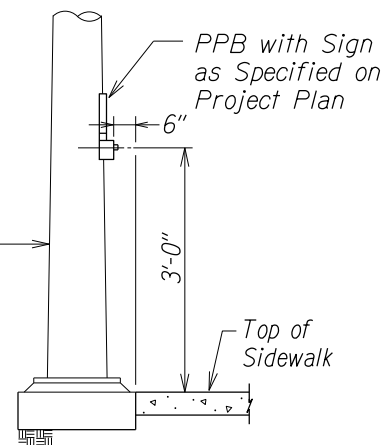
Addendum No. 2
r7/8/22

SURVEY PLOTTED BY	DATE
DRAWN BY	
CHECKED BY	
DESIGNED BY	
QUANTITIES BY	
CHECKED BY	
ORIGINAL PLAN	
NOTE BOOK	
No.	

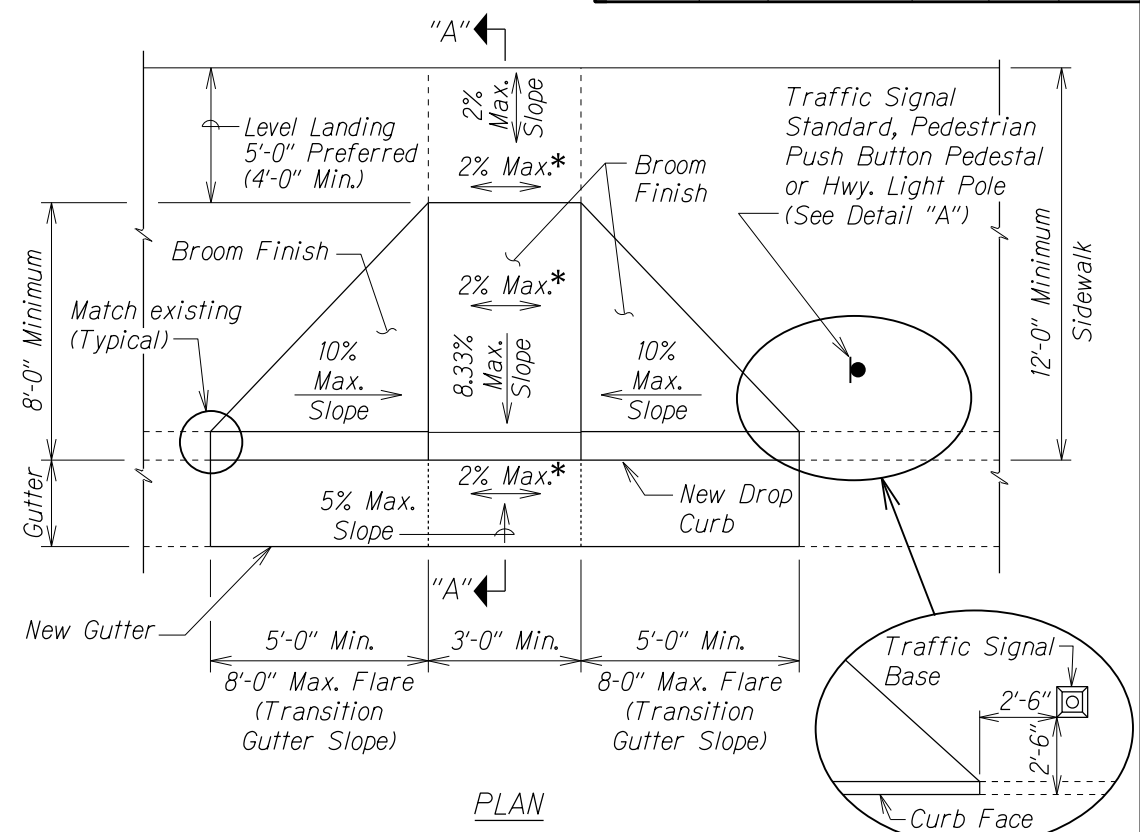
FED. ROAD DIST. NO.	STATE	PROJ. NO.	FISCAL YEAR	SHEET NO.	TOTAL SHEETS
HAWAII	HAW.				



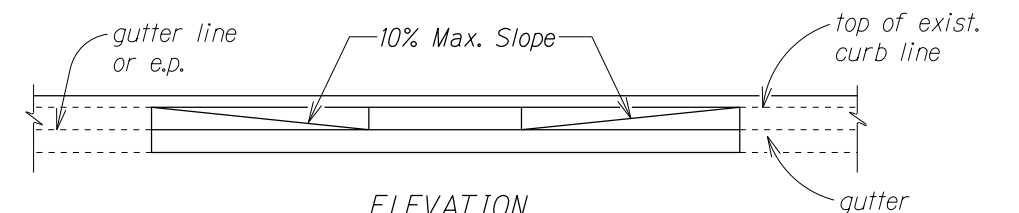
TYPICAL CURB RAMPS



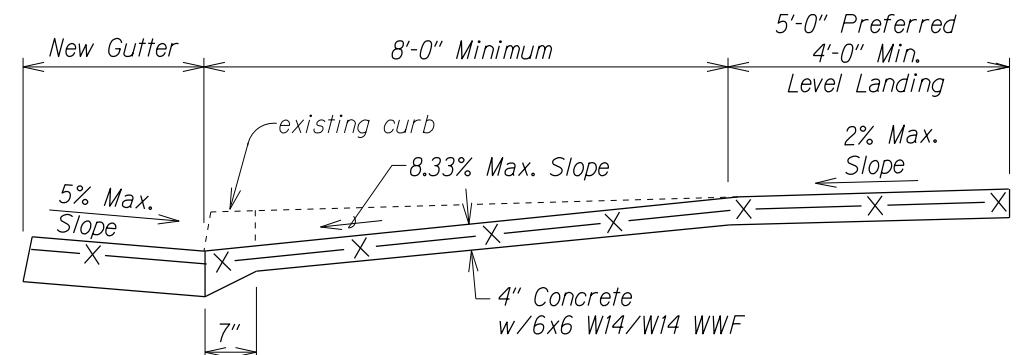
DETAIL "A"



PLAN



ELEVATION



SECTION "A-A"

CURB RAMP - TYPE "A"
SIDEWALK WIDTH 12'-0" OR GREATER

* If Roadway Slope >2% Conform to Roadway Slope and File Technical Infeasibility (TI) Statement

Figure 5.2

STATE OF HAWAII
DEPARTMENT OF TRANSPORTATION
HIGHWAYS DIVISION

CURB RAMP DETAILS

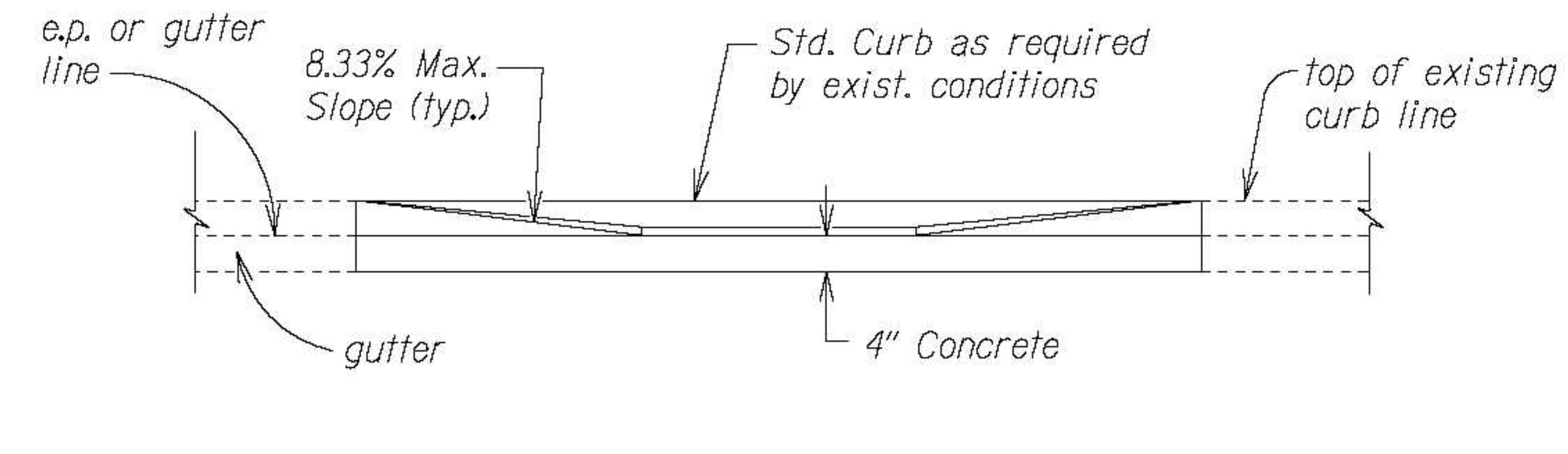
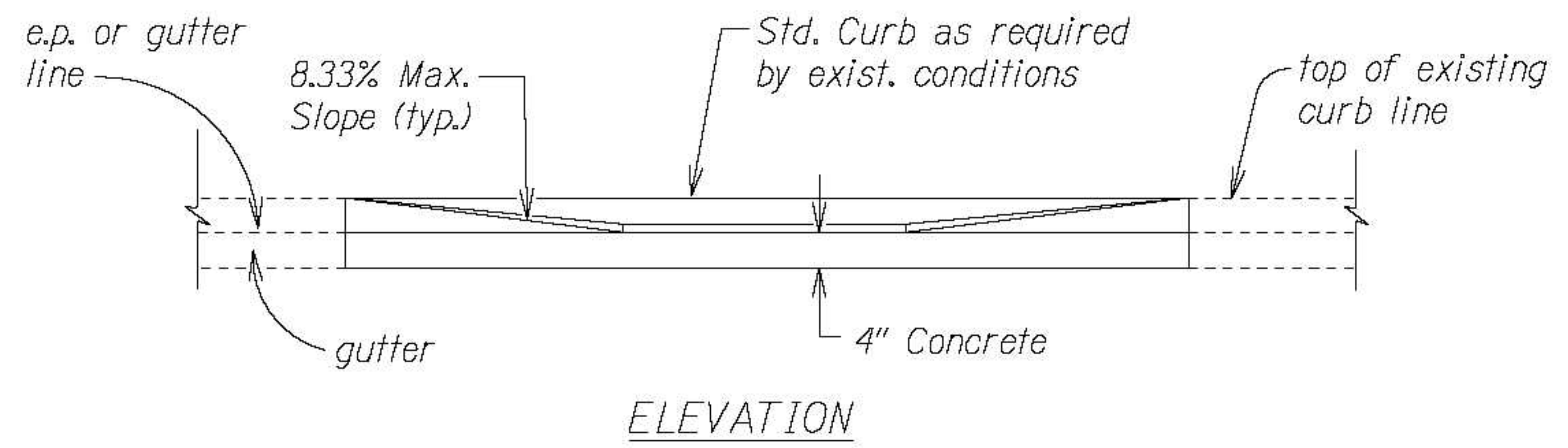
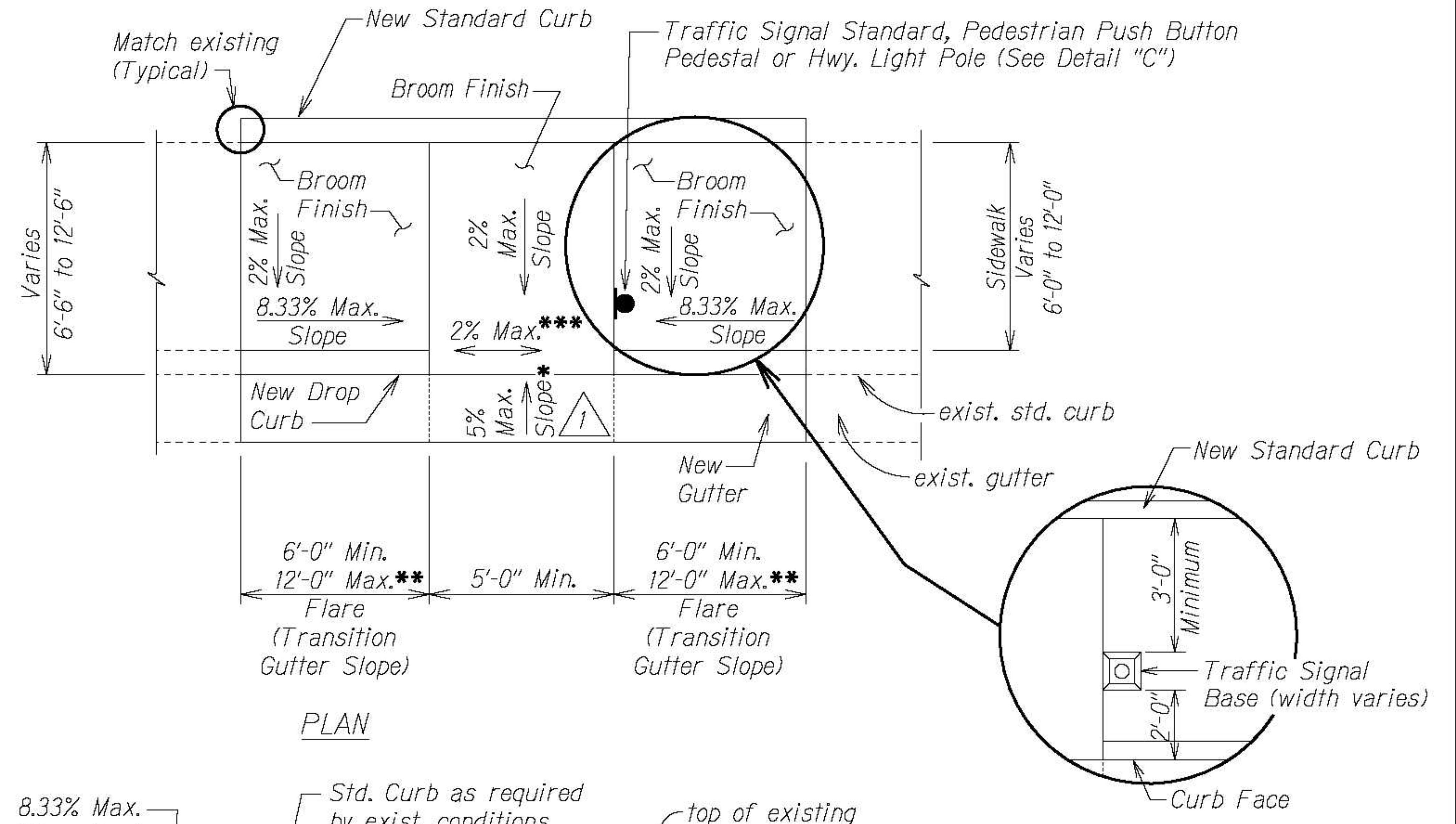
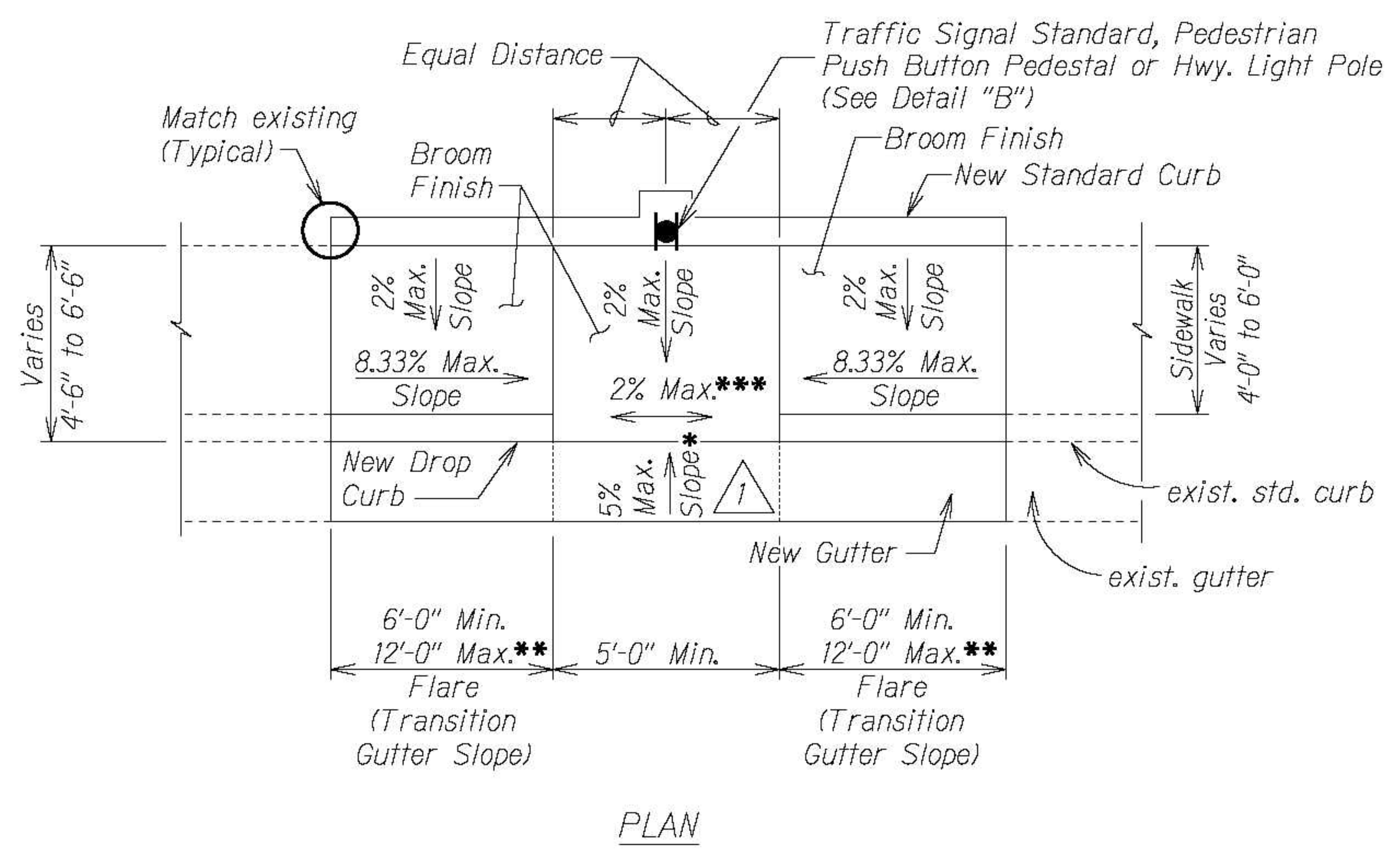
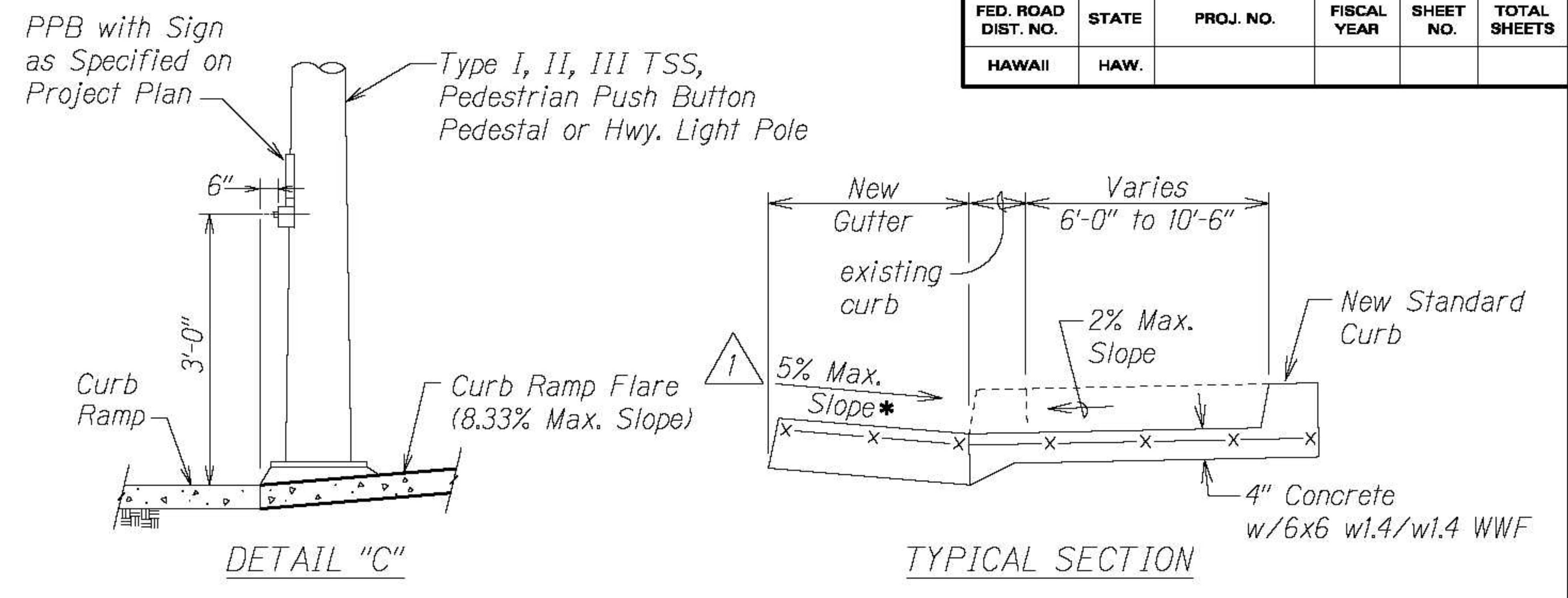
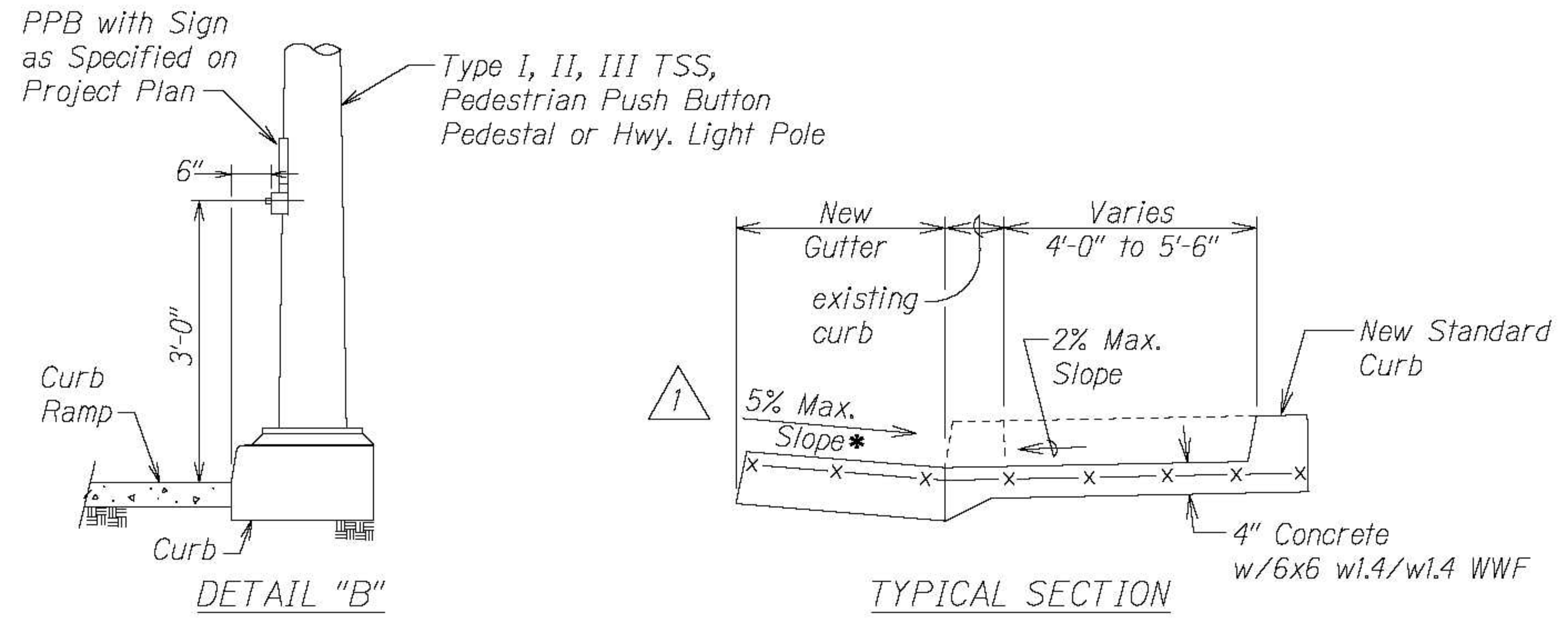
SIDEWALK, CURB & GUTTER REPAIR
AT VARIOUS LOCATIONS

ISLAND OF OAHU

PROJECT NO. HWY-OM-2022-38
Not to Scale Date: June, 2022

SURVEY PLOTTED BY	DATE
DRAWN BY	
DESIGNED BY	
QUANTITIES BY	
CHECKED BY	
ORIGINAL PLAN	
NOTE BOOK	
N ₂	

FED. ROAD DIST. NO.	STATE	PROJ. NO.	FISCAL YEAR	SHEET NO.	TOTAL SHEETS
HAWAII	HAW.				



CURB RAMP - TYPE "B"

SIDEWALK WIDTH 4'-0" OR GREATER BUT LESS THAN 6'-0" WIDTH

CURB RAMP - TYPE "B" MODIFIED

SIDEWALK WIDTH 6'-0" OR GREATER BUT LESS THAN 12'-0" WIDTH

Addendum No. 2 r7/8/22

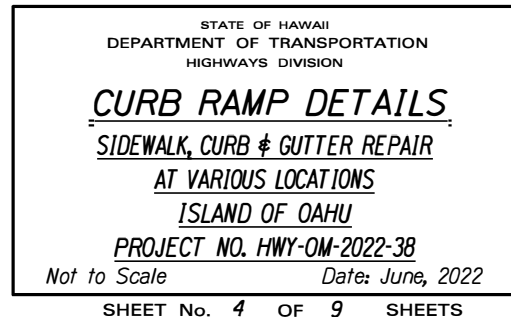
- * See Curb Ramp and Sidewalk Note No. 9
- ** The slope of the ramp shall take precedence over the length of the ramp. If the maximum slope of a ramp cannot be met within a length of 12 feet, then the slope of the ramp shall be set when the length of the ramp is set at the maximum of 12 feet.
- *** If Roadway Slope >2% Conform to Roadway Slope and File Technical Infeasibility (TI) Statement

Figure 5.3

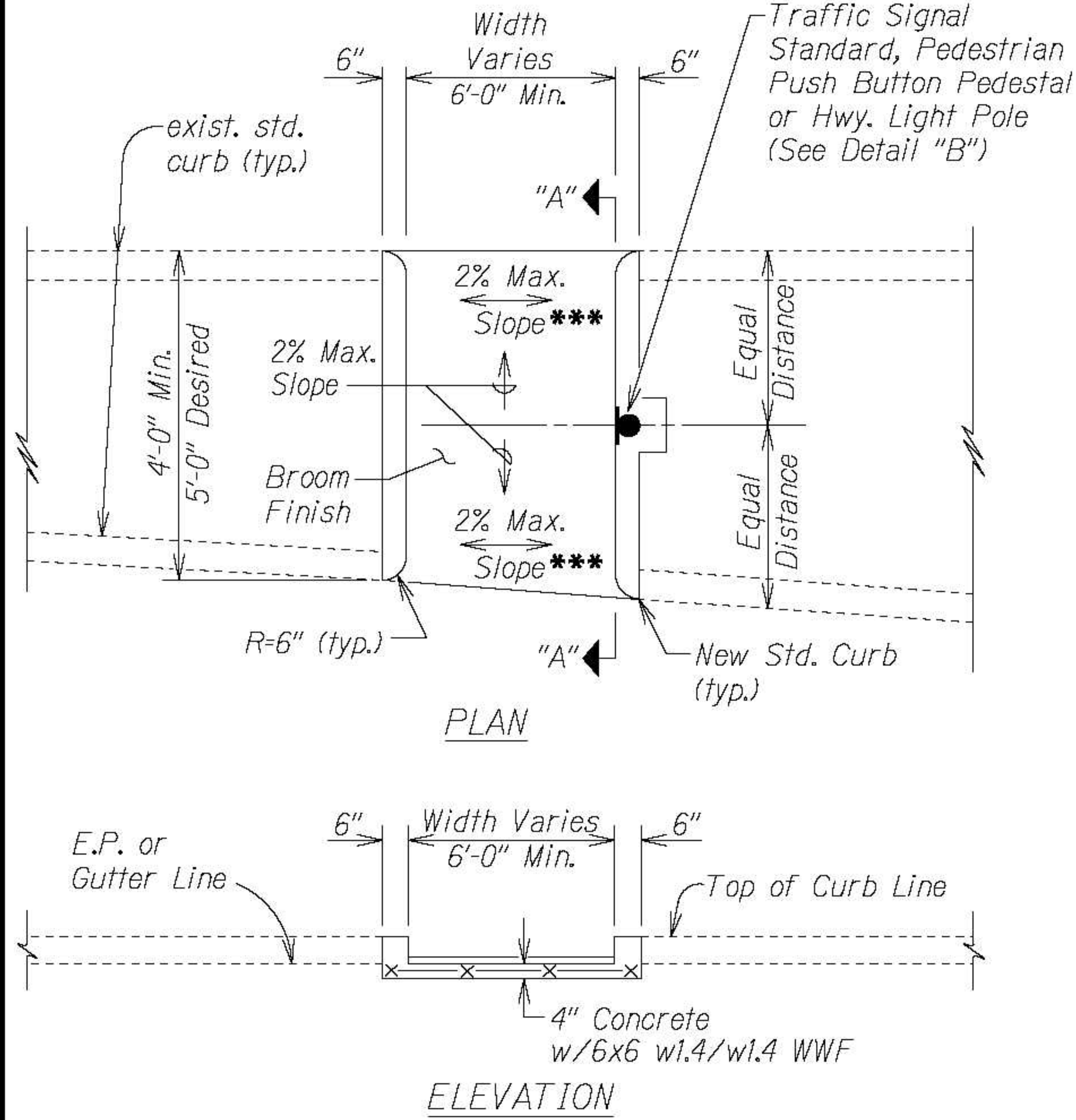
7/8/22	Revised maximum slope..
DATE	REVISION
STATE OF HAWAII DEPARTMENT OF TRANSPORTATION HIGHWAYS DIVISION	
CURB RAMP DETAILS	
SIDEWALK, CURB & GUTTER REPAIR	
AT VARIOUS LOCATIONS	
ISLAND OF OAHU	
PROJECT NO. HWY-OM-2022-38	
Not to Scale	Date: June, 2022
SHEET No. 3 OF 9 SHEETS	

SURVEY PLOTTED BY	DATE
DRAWN BY	
DESIGNED BY	
NOTED BY	
CHECKED BY	
ORIGINAL PLAN	
NOTE BOOK	
DATE	

ORIGINAL PLAN	SURVEY PLOTTED BY _____	DATE _____
NOTE BOOK	DRAWN BY _____	•
	TRACED BY _____	•
	DESIGNED BY _____	•
	QUANTITIES BY _____	•
No. _____	CHECKED BY _____	•

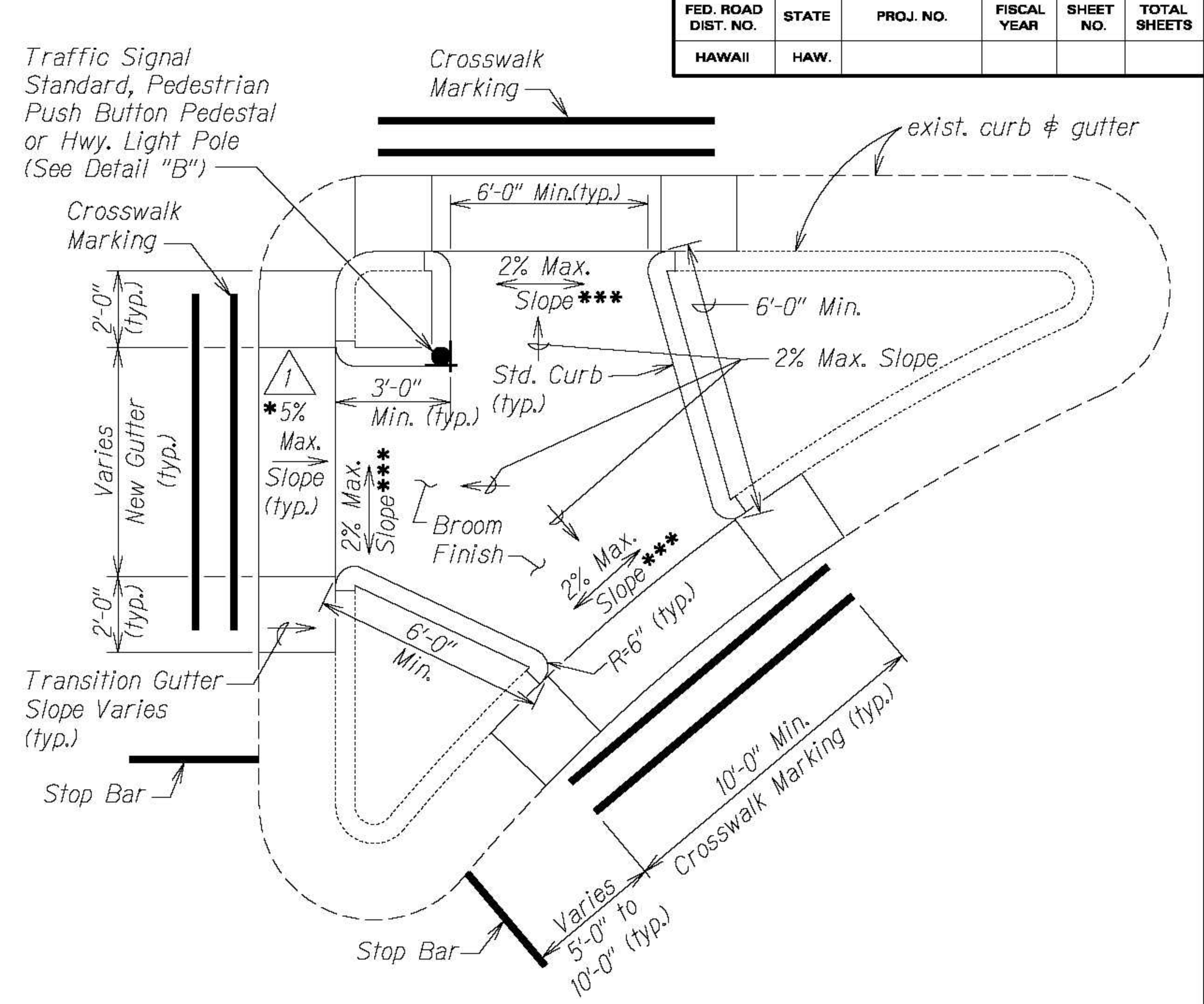
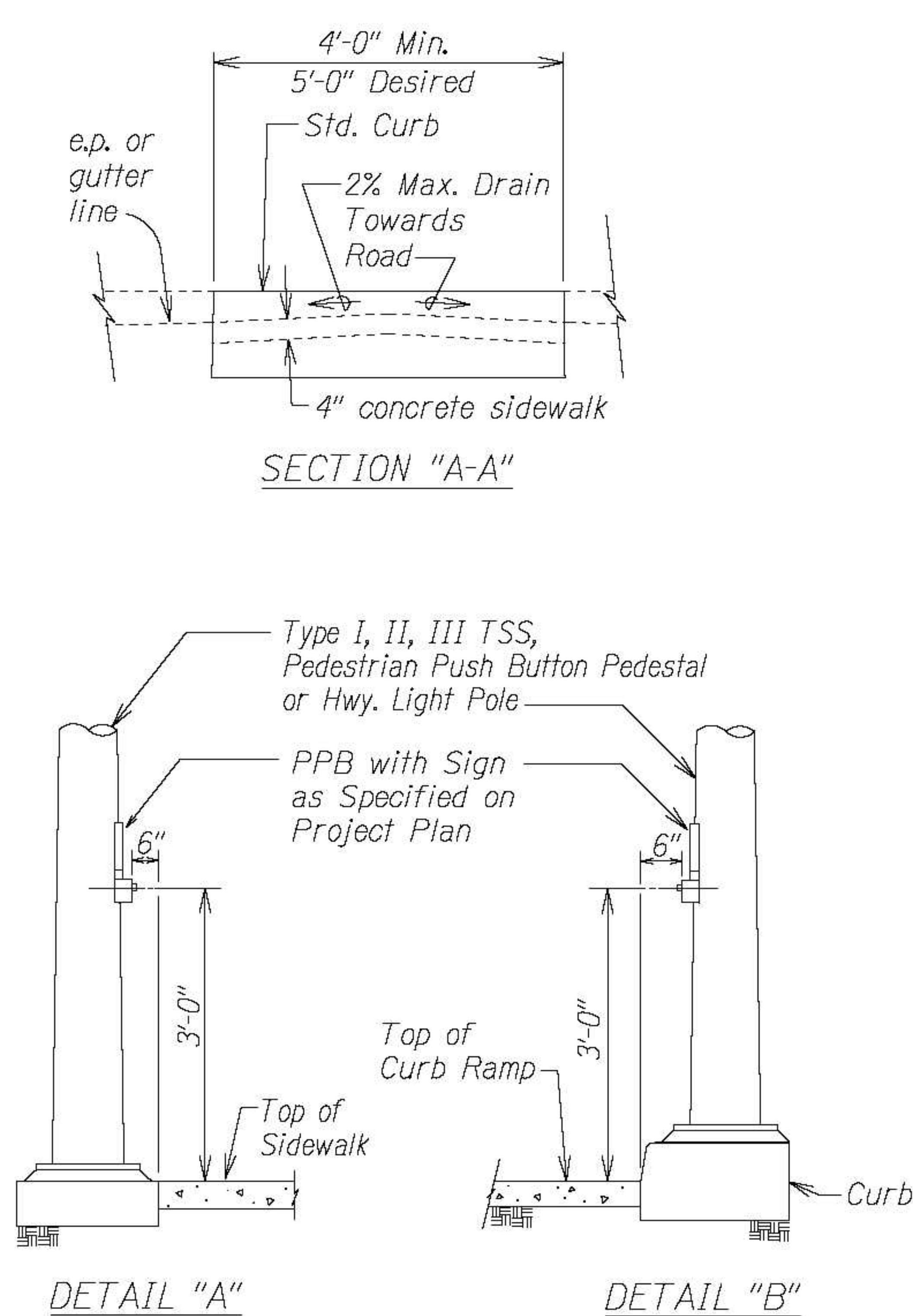


FED. ROAD DIST. NO.	STATE	PROJ. NO.	FISCAL YEAR	SHEET NO.	TOTAL SHEETS
HAWAII	HAW.				

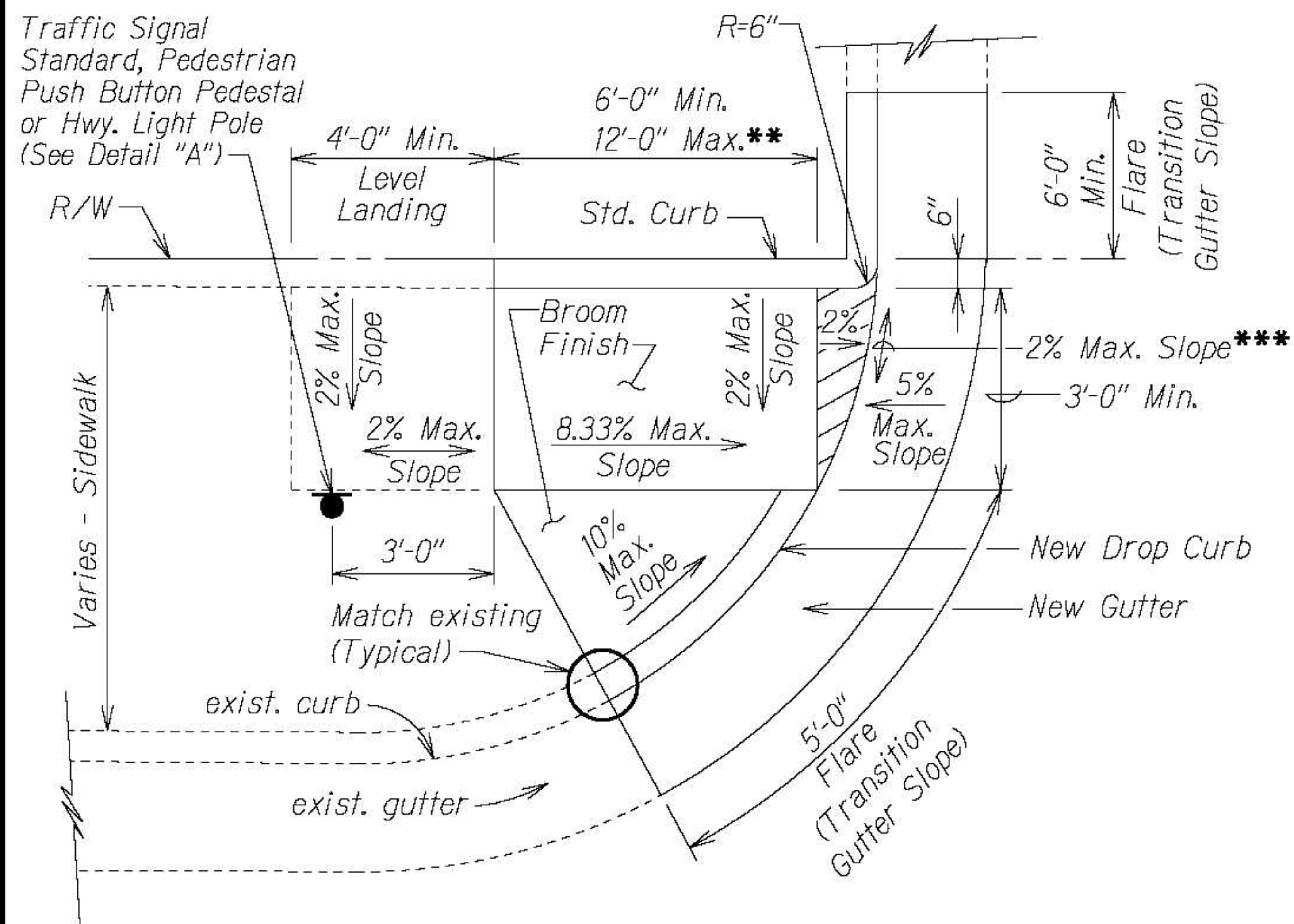


CURB RAMP - TYPE "C"

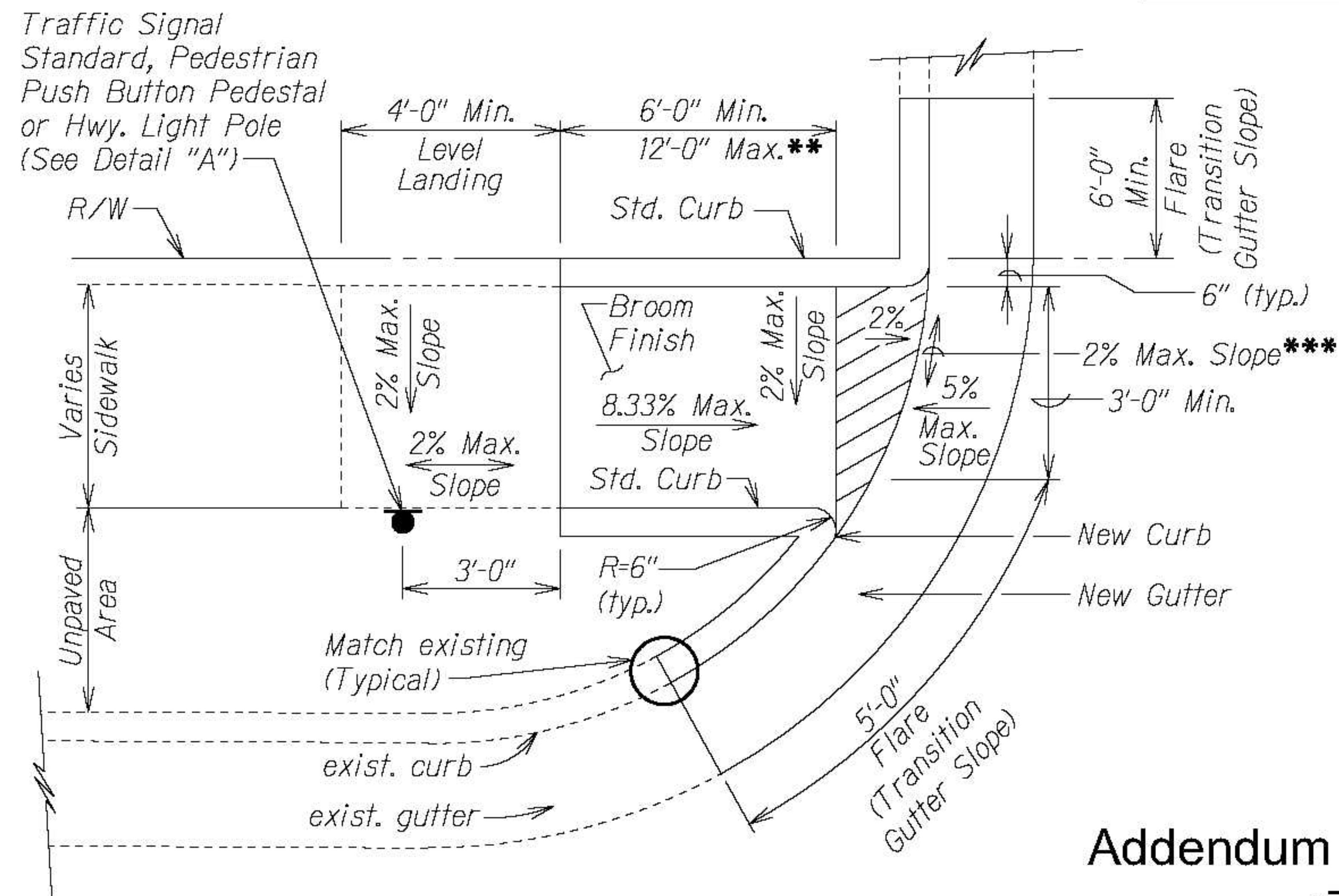
USE AT MEDIAN CROSSINGS, ISLANDS



CURB RAMP - TYPE "C" MODIFIED



CURB RAMP - TYPE "D"



CURB RAMP - TYPE "D" MODIFIED

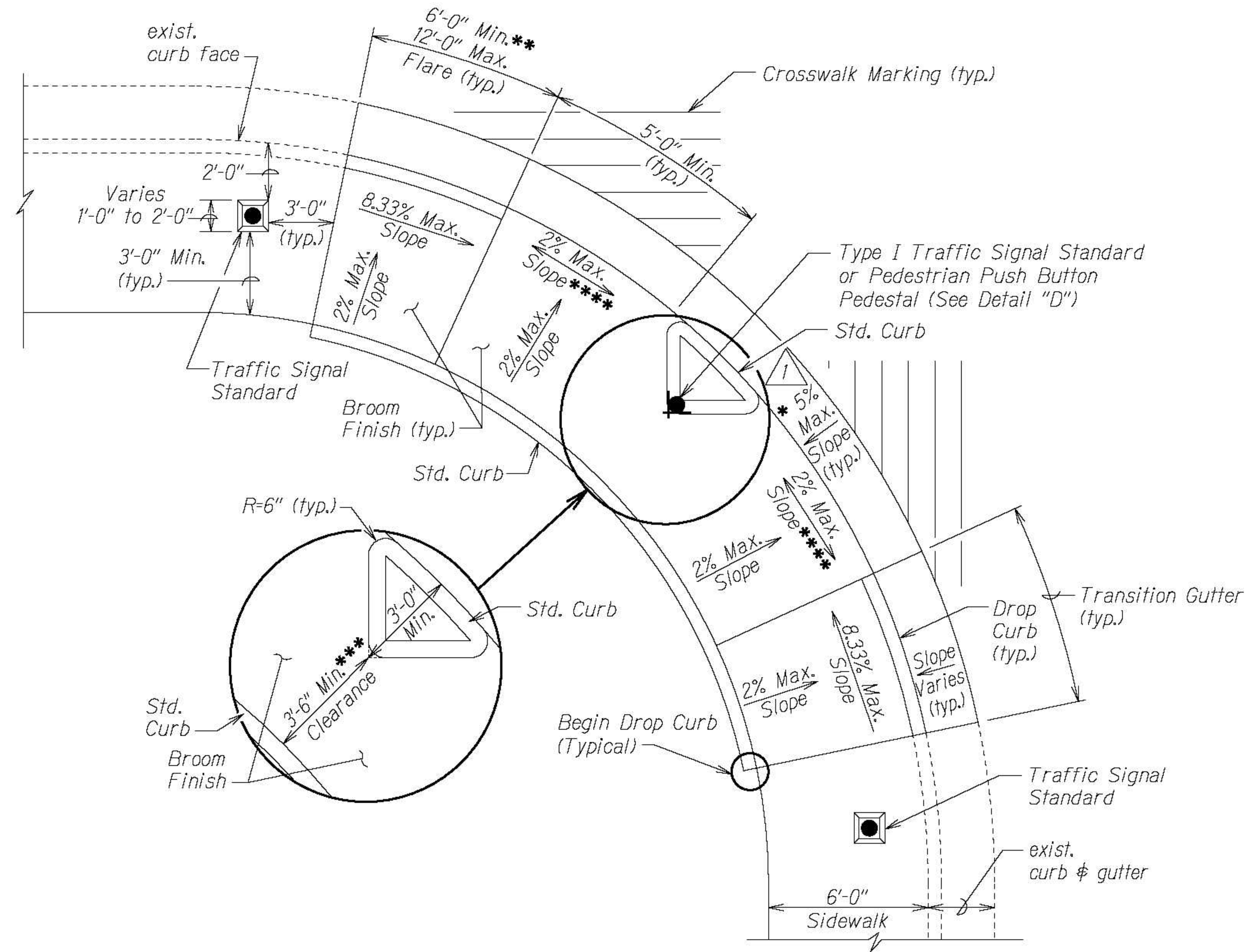
- * See Curb Ramp and Sidewalk Note No. 9.
- ** The slope of the ramp shall take precedence over the length of the ramp. If the maximum slope of a ramp cannot be met within a length of 12 feet, then the slope of the ramp shall be set when the length of the ramp is set at the maximum of 12 feet.
- *** If Roadway Slope >2% Conform to Roadway Slope and File a Technical Infeasibility (TI) Statement

Figure 5.5

DATE	REVISION
7/8/22	Revised maximum slope..
STATE OF HAWAII DEPARTMENT OF TRANSPORTATION HIGHWAYS DIVISION	
CURB RAMP DETAILS	
SIDEWALK, CURB & GUTTER REPAIR	
AT VARIOUS LOCATIONS	
ISLAND OF OAHU	
PROJECT NO. HWY-OM-2022-38	
Not to Scale Date: June, 2022	
SHEET No. 5 OF 9 SHEETS	

Addendum No. 2
r7/8/22

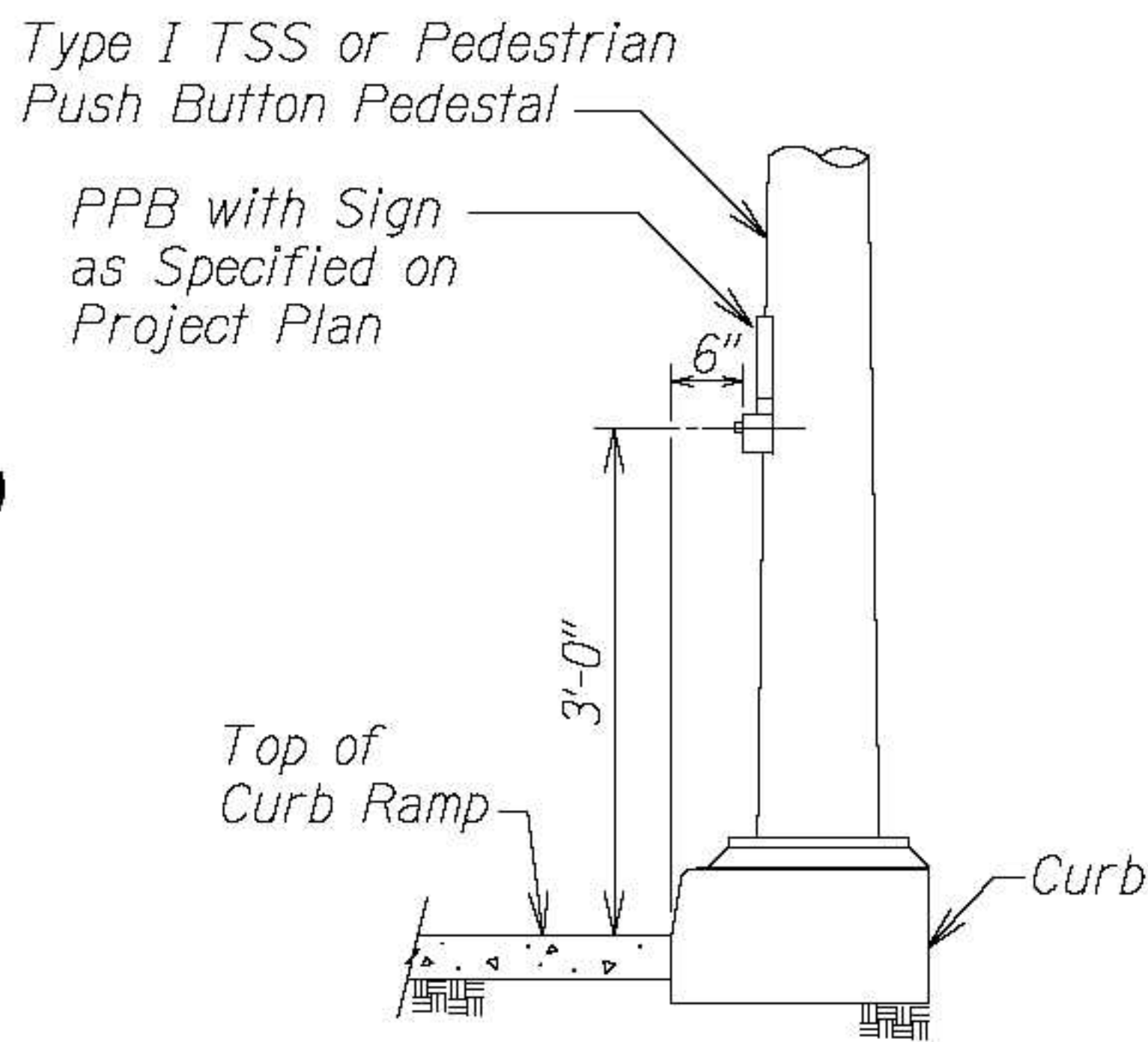
SURVEY PLOTTED BY	DATE
DRAWN BY	
DESIGNED BY	
QUANTITIES BY	
CHECKED BY	
ORIGINAL PLAN	
NOTE BOOK	
DATE	



CURB RAMP - TYPE "E"
SIDEWALK WIDTH 7'-0" OR GREATER

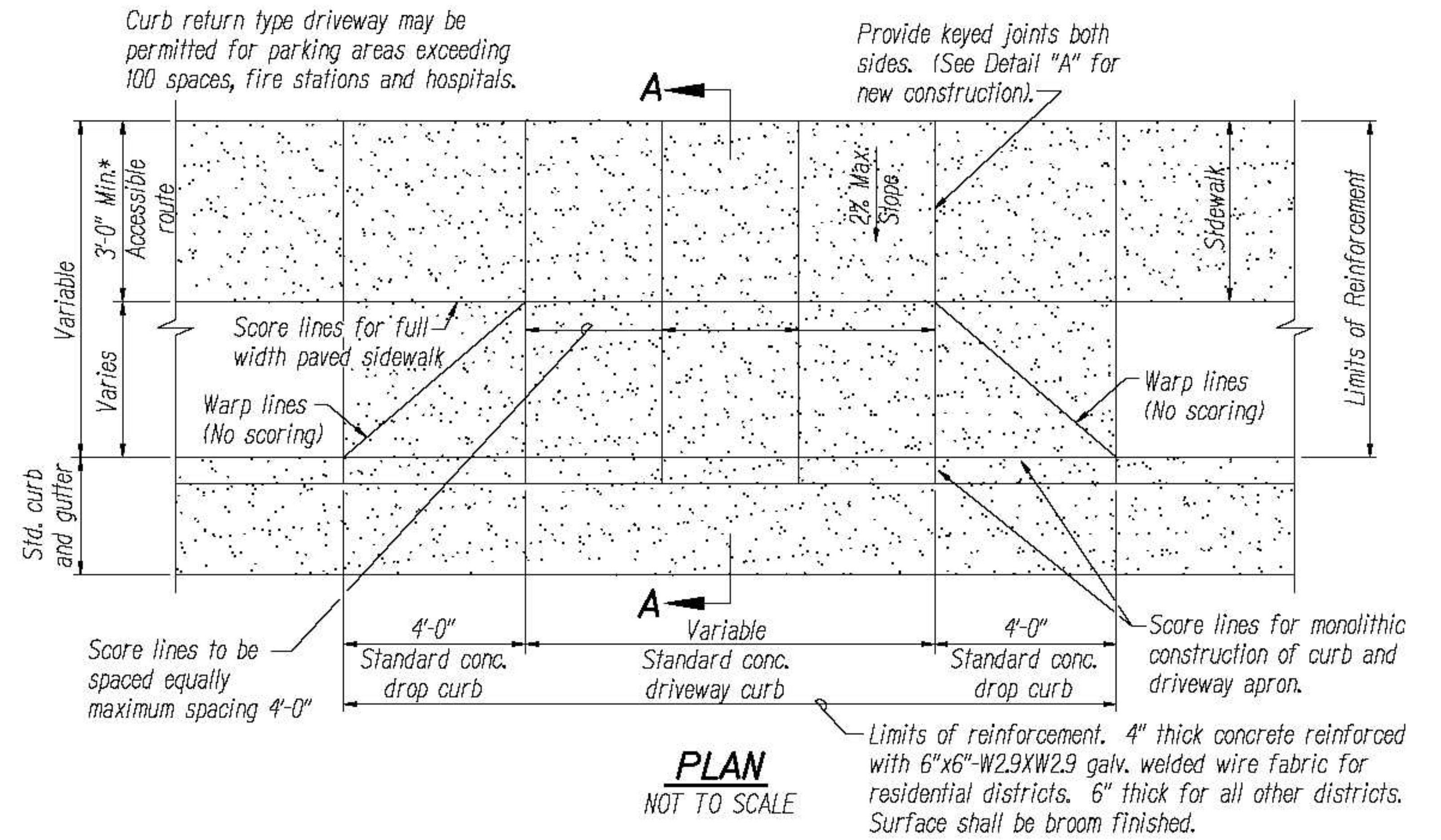
(TO BE USED ONLY WITH TRAFFIC SIGNAL STANDARD OR PEDESTRIAN PUSH BUTTON PEDESTAL ON TRIANGULAR "ISLAND")

- * See Curb Ramp and Sidewalk Note No. 9
- ** The slope of the ramp shall take precedence over the length of the ramp. If the maximum slope of a ramp cannot be met within a length of 12 feet, then the slope of the ramp shall be set when the length of the ramp is set at the maximum of 12 feet.
- *** The Clearance shall be increased to 6'-0" or wider at areas with high pedestrian traffic or as directed by the Engineer or as shown on the plans.
- **** If Roadway Slope >2% Conform to Roadway Slope and File Technical Infeasibility (TI) Statement

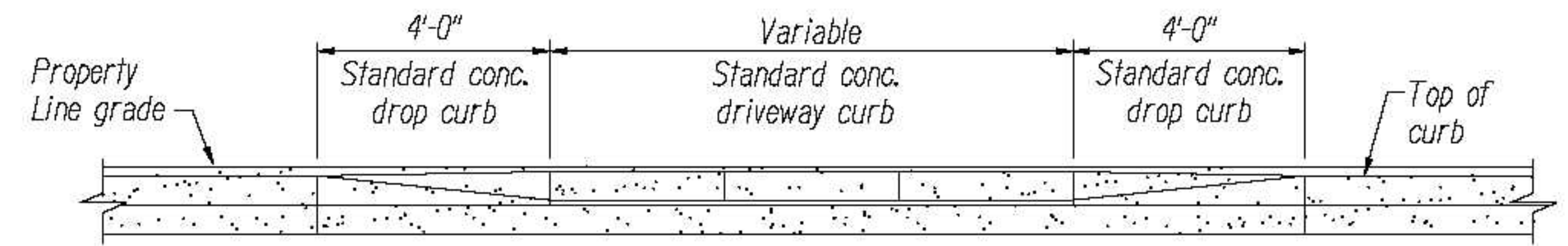


DETAIL "D"

Addendum No. 2
r7/8/22

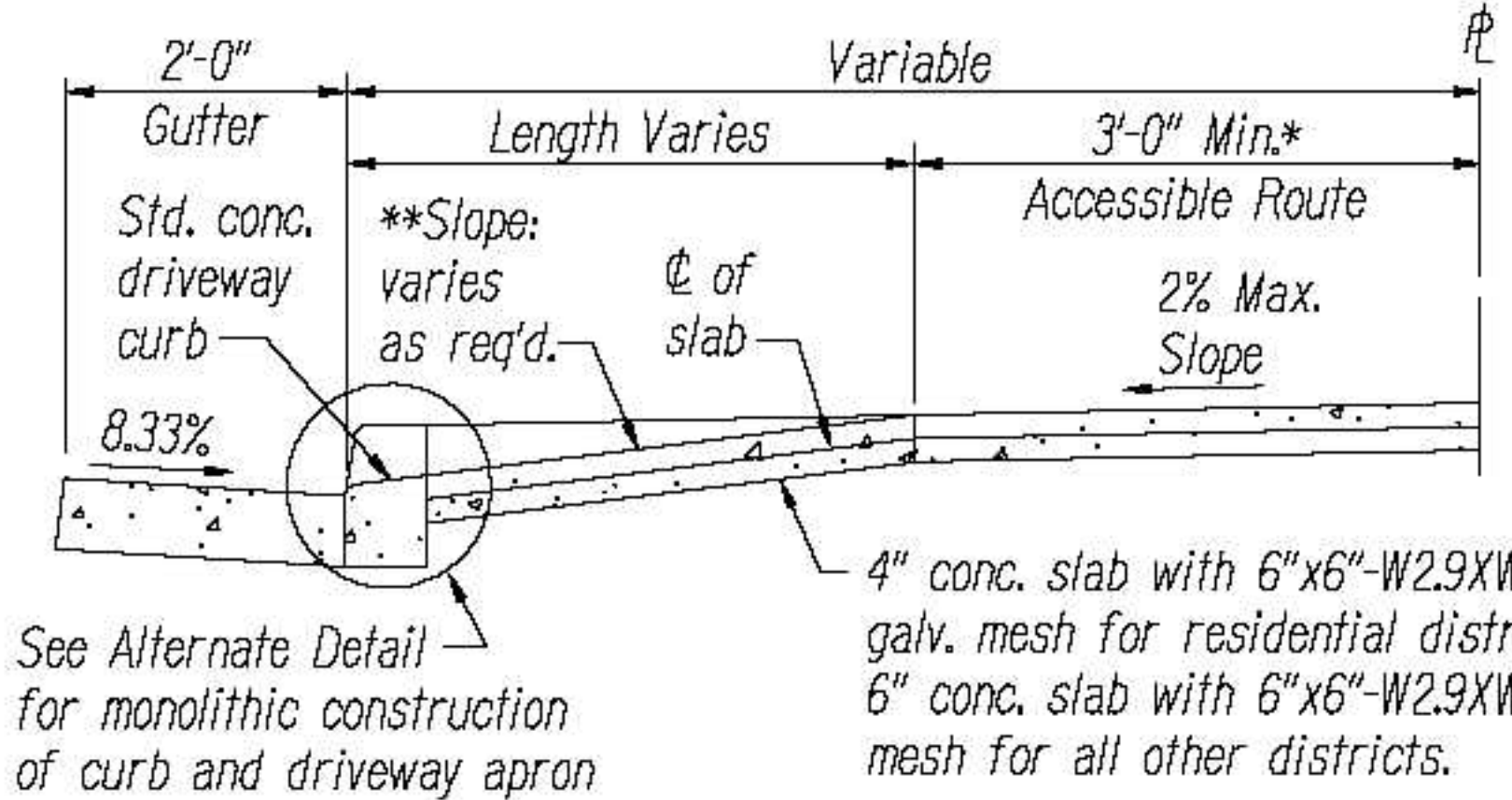


PLAN
NOT TO SCALE

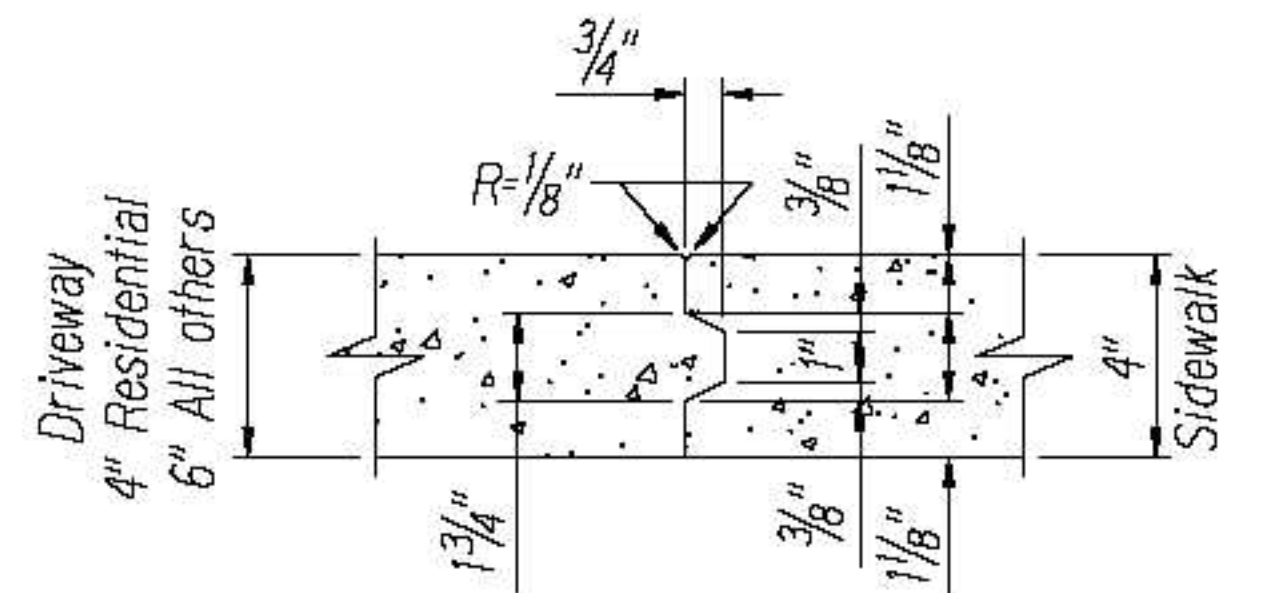


ELEVATION
NOT TO SCALE

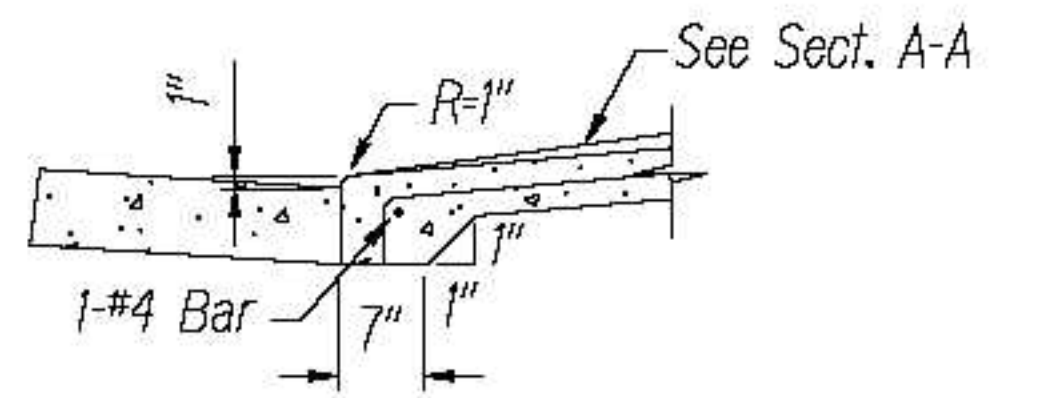
- * Match width of existing sidewalk whenever possible.
- ** Breakover and departure angles should not exceed 10 degrees or 17%.



SECTION A-A
NOT TO SCALE



DETAIL "A"
NOT TO SCALE
(NEW CONSTRUCTION)



ALTERNATE DETAIL
NOT TO SCALE

DRIVEWAY APRON Figure 5.6

NOTES:

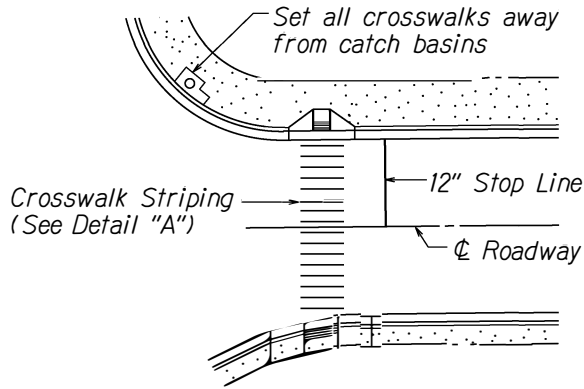
- For extension to existing driveway, scoring and finish shall match existing scoring and finish. For driveway constructed in built up areas, scoring conforming to scoring at adjacent driveways may be authorized.
- This detail is only one method for providing ADA access. Other methods can be used. These methods are shown in references listed in Curb Ramp and Sidewalk Note No. 21.



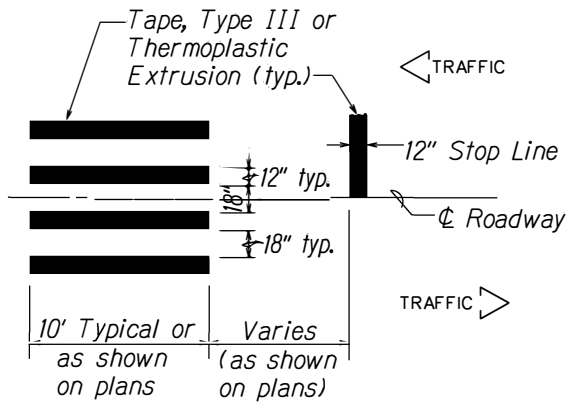
7/8/22
DATE

Revised maximum slope.
REVISION

FED. ROAD DIST. NO.	STATE	PROJ. NO.	FISCAL YEAR	SHEET NO.	TOTAL SHEETS
HAWAII	HAW.				



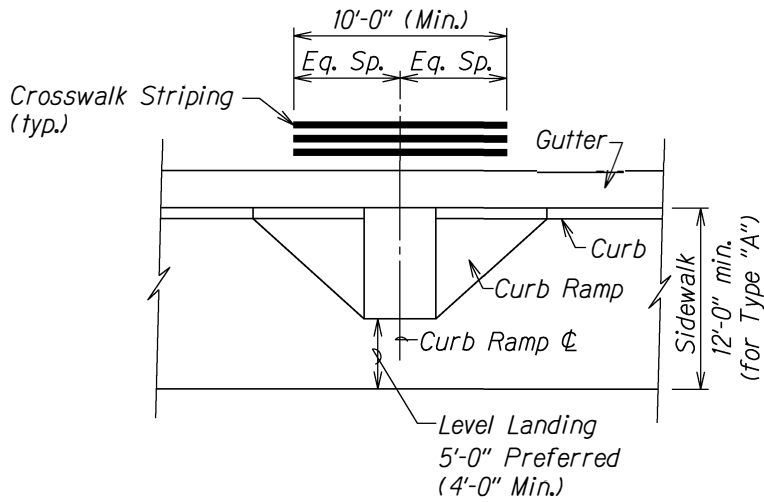
PLAN



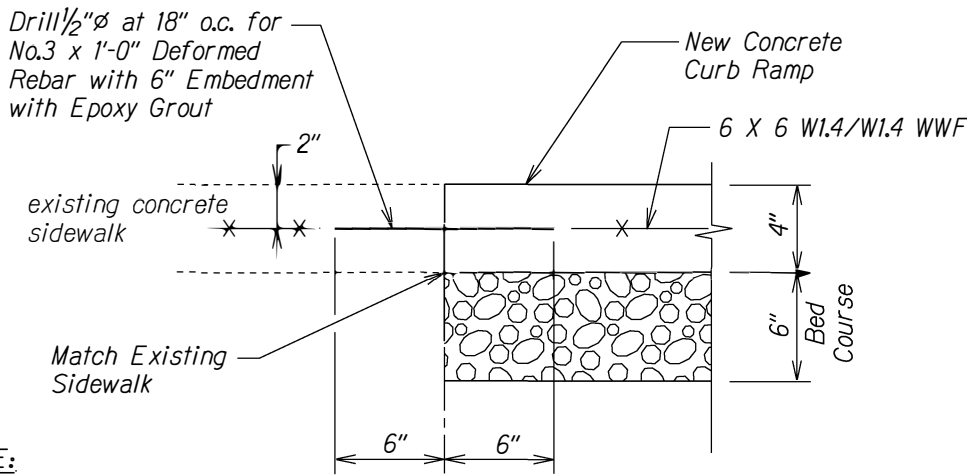
DETAIL "A"

CROSSWALK STRIPING DETAIL

NOTE:
Longitudinal lines shall be parallel to traffic flow.

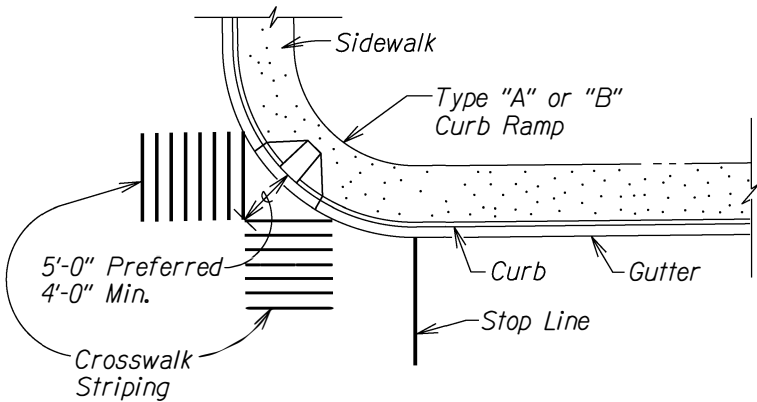


TYPICAL CROSSWALK STRIPING
AT CURB RAMP

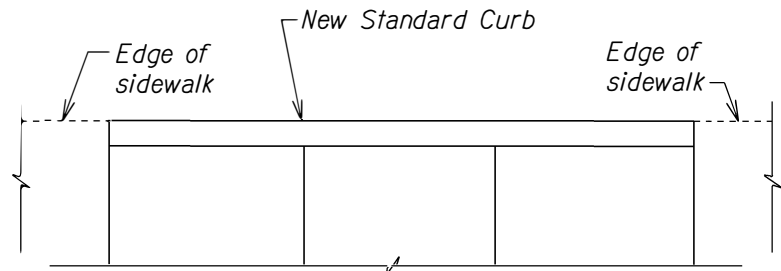


NOTE:
All curb ramps shall be reinforced.

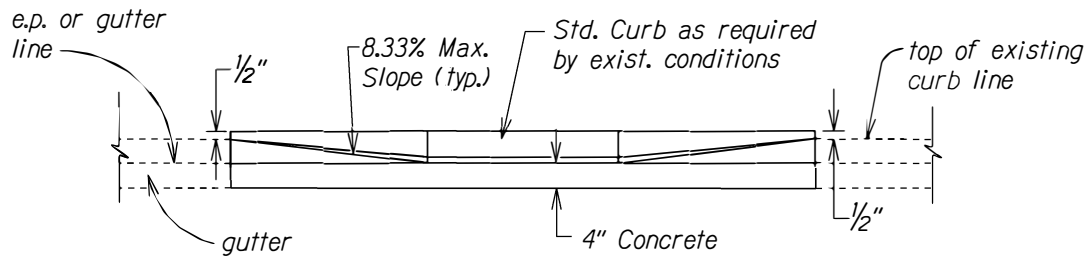
TYPICAL CONSTRUCTION JOINT
AT EXISTING SIDEWALK



TYPICAL CROSSWALK STRIPING
AT DIAGONAL CURB RAMP



PLAN



ELEVATION

DETAIL - BACK CURB

NOTE:
This detail can be used in situations where the edge of sidewalk cannot be flush with the face of (back) curb due to right of way restrictions.

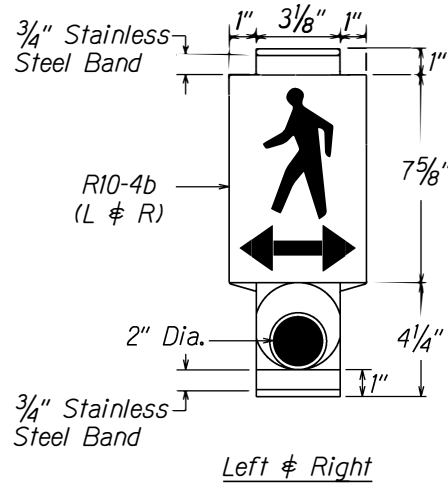
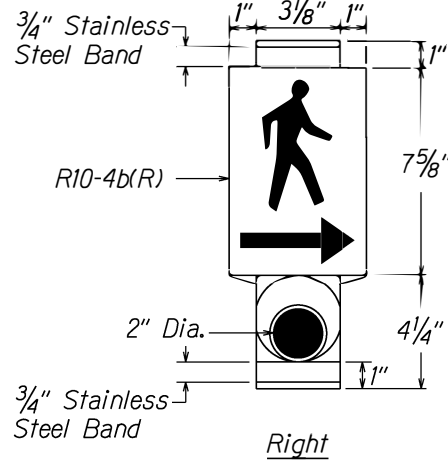
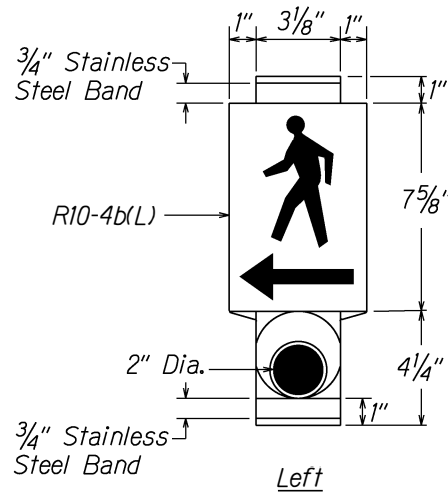
Figure 5.7



STATE OF HAWAII
DEPARTMENT OF TRANSPORTATION
HIGHWAYS DIVISION

MISCELLANEOUS DETAILS
SIDEWALK, CURB & GUTTER REPAIR
AT VARIOUS LOCATIONS
ISLAND OF OAHU
PROJECT NO. HWY-OM-2022-38
Not to Scale Date: June, 2022

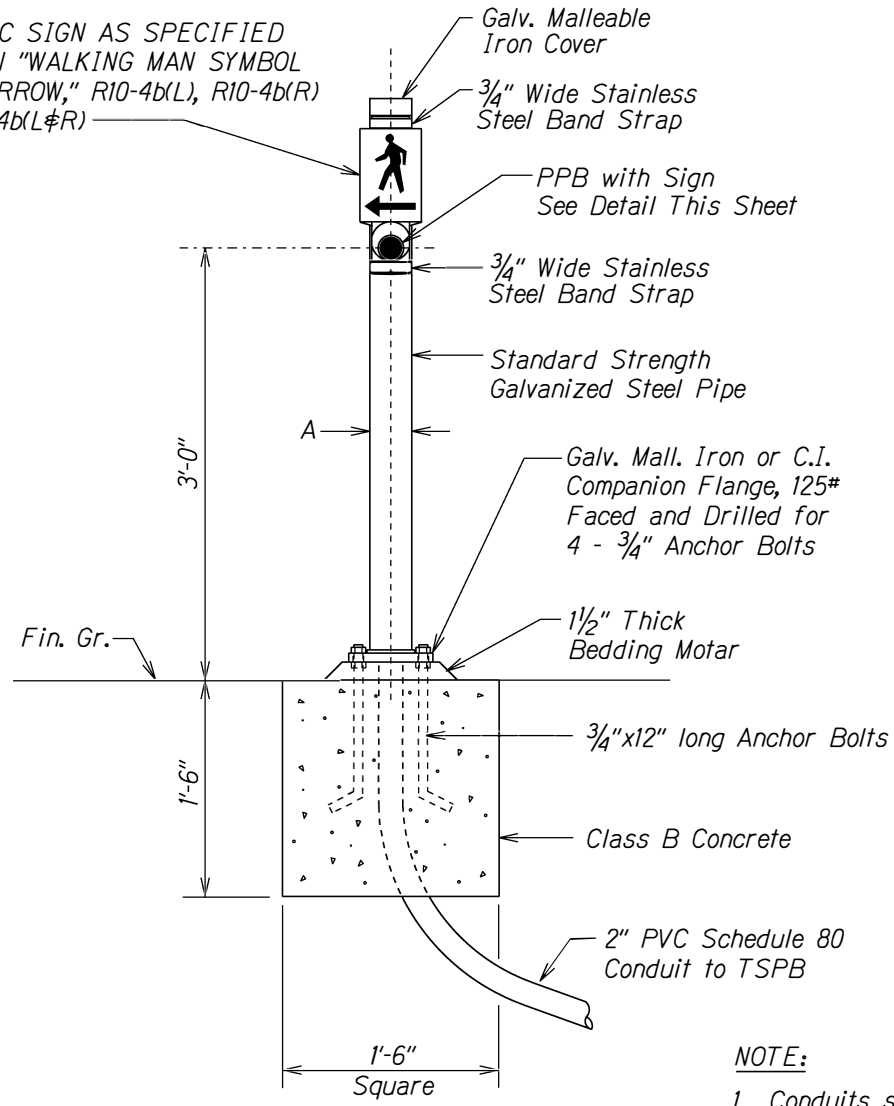
SHEET No. 7 OF 9 SHEETS



PEDESTRIAN PUSH BUTTON WITH SIGN

Man, Arrow & Push Button - White Background - Black

TRAFFIC SIGN AS SPECIFIED IN PLAN "WALKING MAN SYMBOL WITH ARROW," R10-4b(L), R10-4b(R) OR R10-4b(L&R)



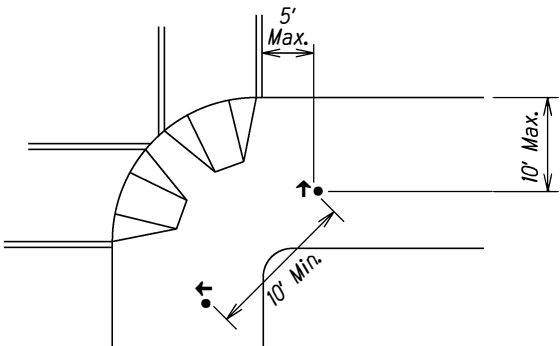
PPB POST AND FOOTING DETAIL

DATA TABLE FOR PPB POST		
AMOUNT OF PPB	DIMENSIONS	
	A	B
1	3 1/2"	8"
2-3	4 1/2"	9"

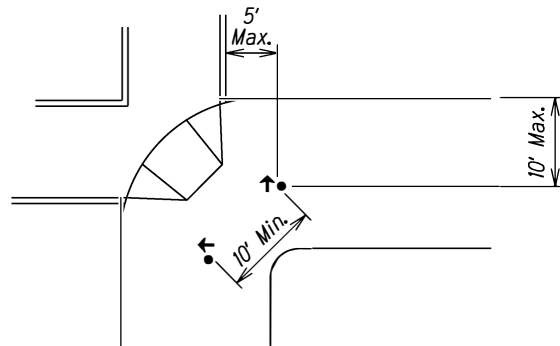
- NOTE:**
1. Conduits shall protrude 2" max. above finished surface of foundation.
 2. Conduits shall slope away from post foundation.

GENERAL NOTES:

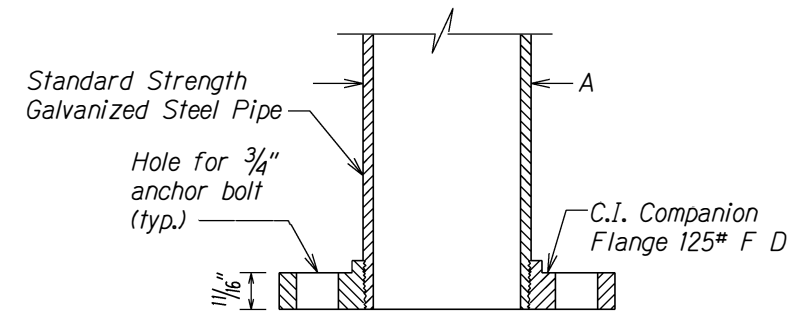
1. There shall be a 30" x 48" level ground surface (2% max. cross slope, both directions) for a forward or side approach, as appropriate, to a pedestrian push button. Location of pedestrian push button shall be shown on Civil Plans in addition to Electrical Plans.
2. At intersection corners where two pedestrian push buttons are provided, the push buttons should be separated by a distance of at least 10 ft. and located as follows:
 - A. adjacent to a level all-weather surface to provide access from a wheelchair and, where there is an all-weather surface, wheelchair accessible route to the ramp
 - B. within 5 ft. of the crosswalk extended
 - C. within 10 ft. of the edge of the curb, shoulder or pavement
 - D. parallel to the crosswalk to be used



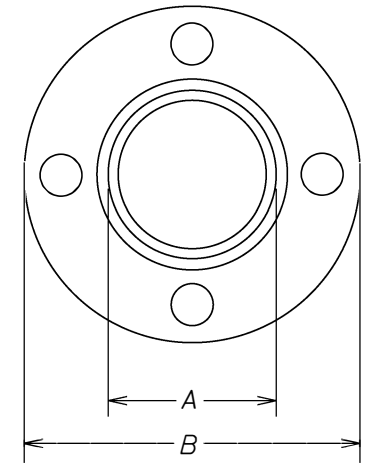
TWO CURB-CUT RAMPS



ONE CURB-CUT RAMP



SECTION



TOP VIEW

FLANGE DETAIL

Figure 5.8

STATE OF HAWAII
DEPARTMENT OF TRANSPORTATION
HIGHWAYS DIVISION

PEDESTRIAN PUSH BUTTON DETAILS

SIDEWALK, CURB & GUTTER REPAIR

AT VARIOUS LOCATIONS

ISLAND OF OAHU

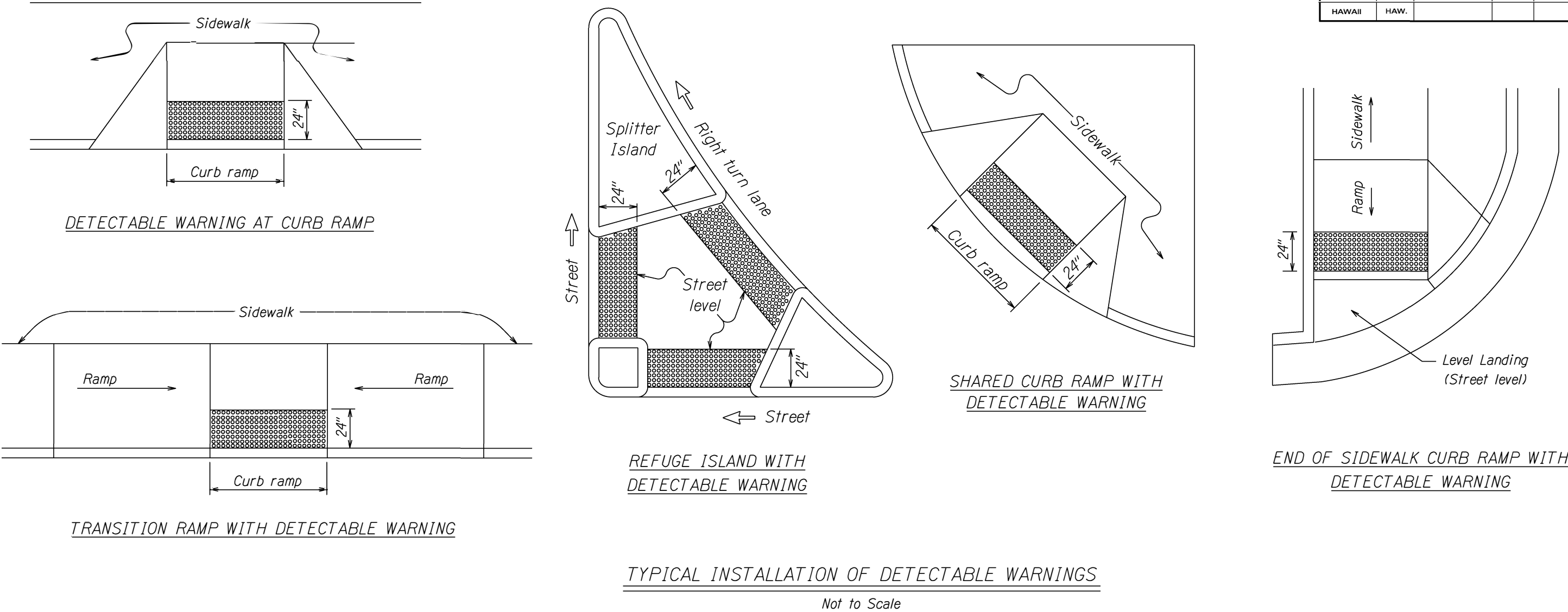
PROJECT NO. HWY-OM-2022-38

Scale: Not to scale Date: June, 2022

SHEET No. 8 OF 9 SHEETS

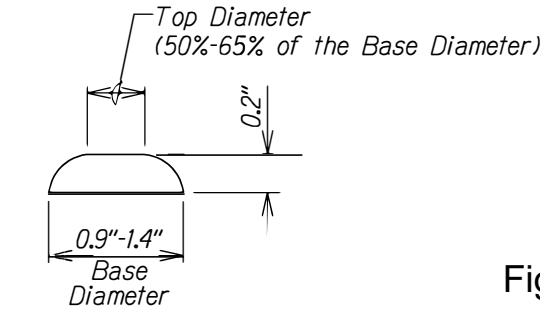
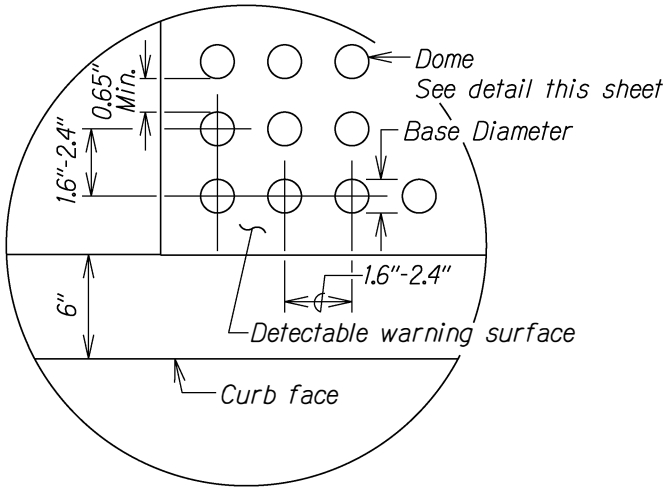
SURVEY PLOTTED BY	DATE
DRAWN BY	
DESIGNED BY	
QUANTITIES BY	
CHECKED BY	
ORIGINAL PLAN	
NOTE BOOK	
N ₁	

FED. ROAD DIST. NO.	STATE	PROJ. NO.	FISCAL YEAR	SHEET NO.	TOTAL SHEETS
HAWAII	HAW.				



NOTES:

1. Detectable warnings shall be 24 inches in the direction of travel and extend the full width of the curb ramp or flush surface (does not include flares).
2. Truncated domes shall have a diameter of 0.9 to 1.4 inch at the bottom, a diameter of 50%-65% of the base diameter at the top, a height of 0.2 inch and a center-to-center spacing of 1.6 to 2.4 inches measured along one side of a square arrangement.
3. Domes shall be aligned on a square grid in the predominant direction of travel to permit wheels to roll between the domes.
4. There shall be a minimum of 70 percent contrast in light reflectance between the detectable warning and an adjoining surface, or the detectable warning shall be "safety yellow".
5. The material used to provide visual contrast shall be an integral part of the detectable warning surface.
6. The detectable warning shall be located so that the edge nearest the curb line or other potential hazard is 6 to 8 inches from the curb line.



ENLARGEMENT

DOME SECTION

DETECTABLE WARNING DETAIL

Not to Scale

Figure 5.9

STATE OF HAWAII
DEPARTMENT OF TRANSPORTATION
HIGHWAYS DIVISION

DETECTABLE WARNING DETAILS
SIDEWALK, CURB & GUTTER REPAIR
AT VARIOUS LOCATIONS
ISLAND OF OAHU
PROJECT NO. HWY-OM-2022-38
Scale: XX Date: June, 2022

SHEET No. 9 OF 9 SHEETS