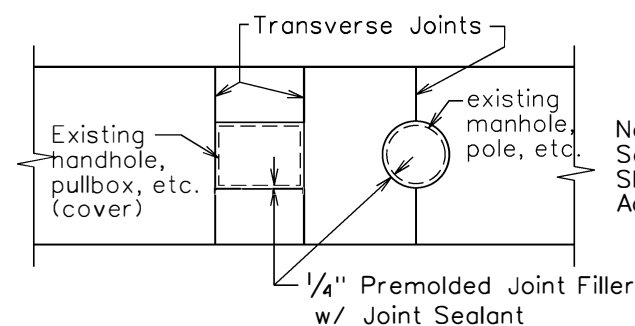
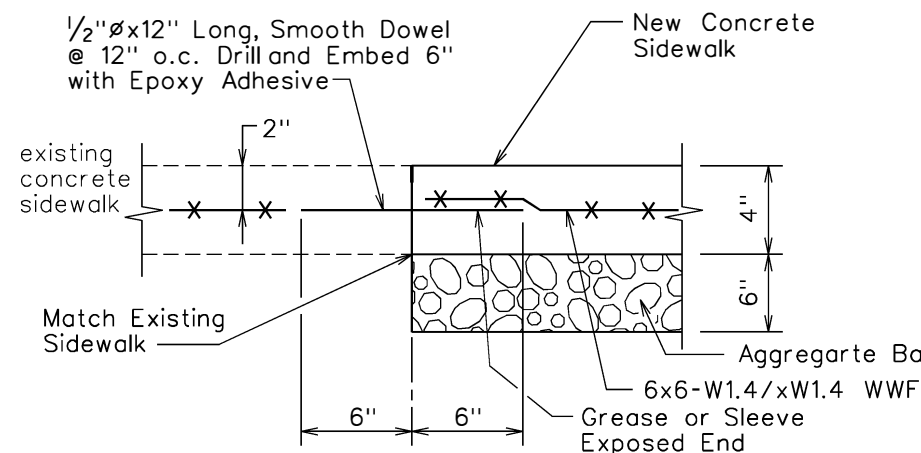


- Notes:**
1. Joint Dimensions: $(B/A \text{ or } A/B) < 1.25$ and $(A \text{ or } B)$ not to exceed 7'-0"
 2. Longitudinal Joints shall be similar to Transverse Joints.
 3. Special Design to be used where $A \text{ or } B > 7'-0"$

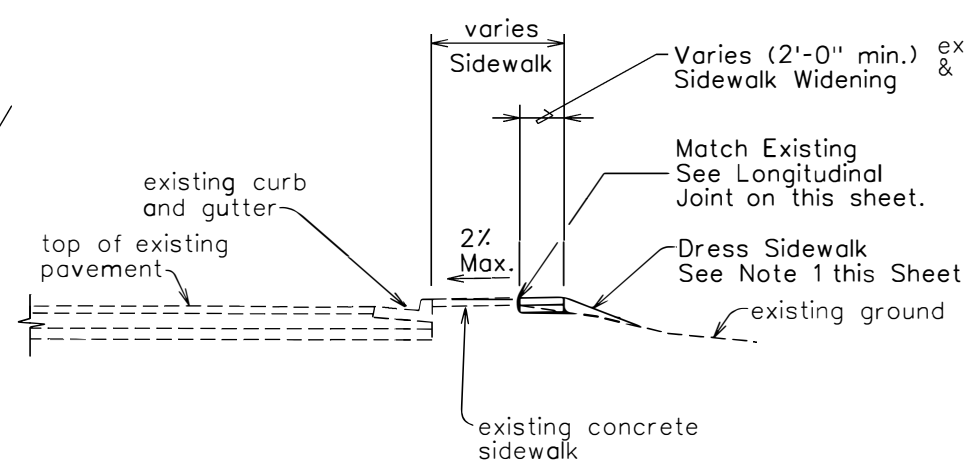
1 SIDEWALK CONTRACTION JOINT DETAIL



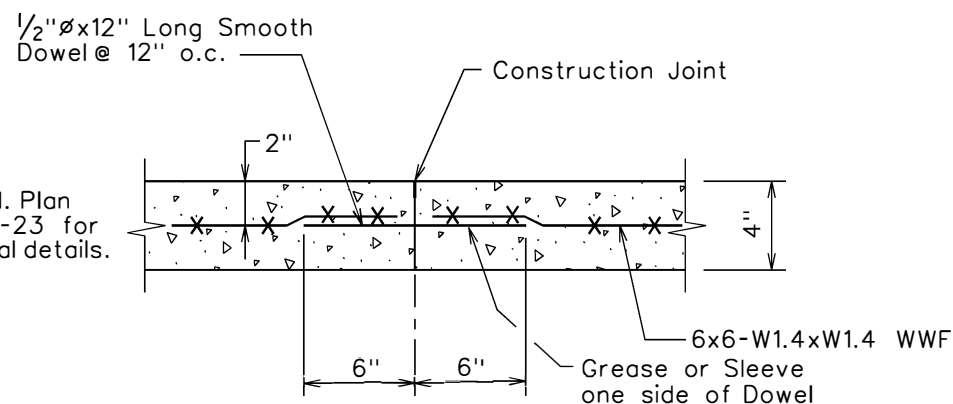
SIDEWALK ISOLATION JOINT DETAIL



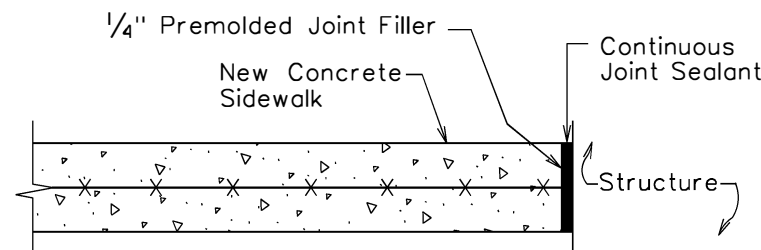
TRANSVERSE JOINT AT EXISTING SIDEWALK



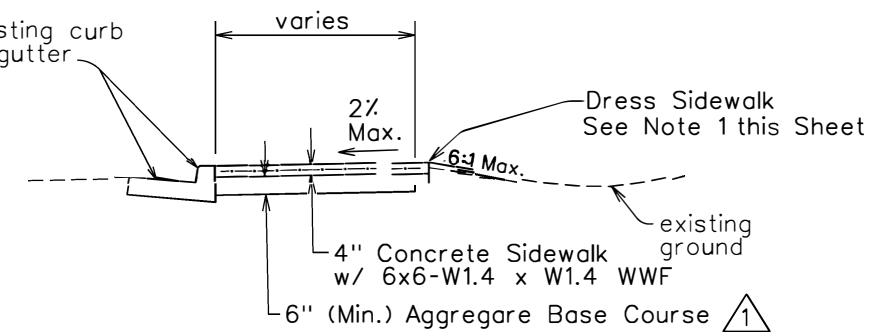
SIDEWALK WIDENING SECTION



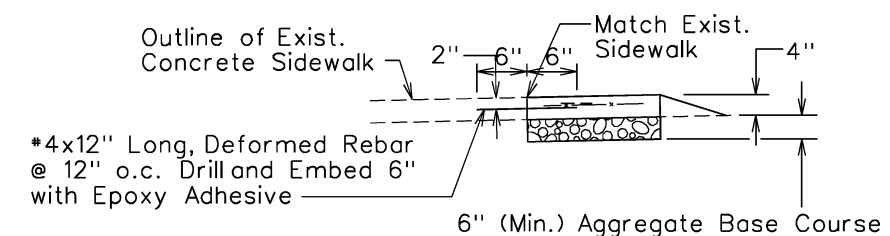
TRANSVERSE CONSTRUCTION JOINT DETAIL



TRANSVERSE JOINT AT STRUCTURE DETAIL



SIDEWALK DETAIL



- Note:**
1. Do not install rebars within 6" of any planned transverse contraction or transverse construction joint.

LONGITUDINAL JOINT AT EXISTING SIDEWALK

NOTES:

1. Dressing of sidewalk shall consist of clearing, grubbing, grading, reshaping and compacting the area adjacent to the improvement with suitable materials as shown on the plans and/or as directed by the Engineer. If existing ground is asphalt or concrete surface, dress sidewalk with A.C. pavement, Mix No. V. This work shall be considered incidental to the new sidewalk.
2. Transverse and longitudinal weakened plane joints for sidewalk shall be considered incidental to the new sidewalk.
3. Installation of dowels and tie bars, including drilling and epoxy grout, shall be incidental to Sidewalk.
4. Concrete shall be Class "A".
5. Only flat sheets of welded wire fabric reinforcement shall be used. No rolled welded wire fabric reinforcement will be allowed.

1	11/01/21	Revised and edited Sidewalk Contraction joint detail callout and notes.	
2	01/27/17	Replaced Bedcourse with Aggregate Base Course. Added Notes.	
	DATE	REVISION	APP'D.

STATE OF HAWAII DEPARTMENT OF TRANSPORTATION HIGHWAYS DIVISION
STANDARD PLAN D-15
CONCRETE SIDEWALK