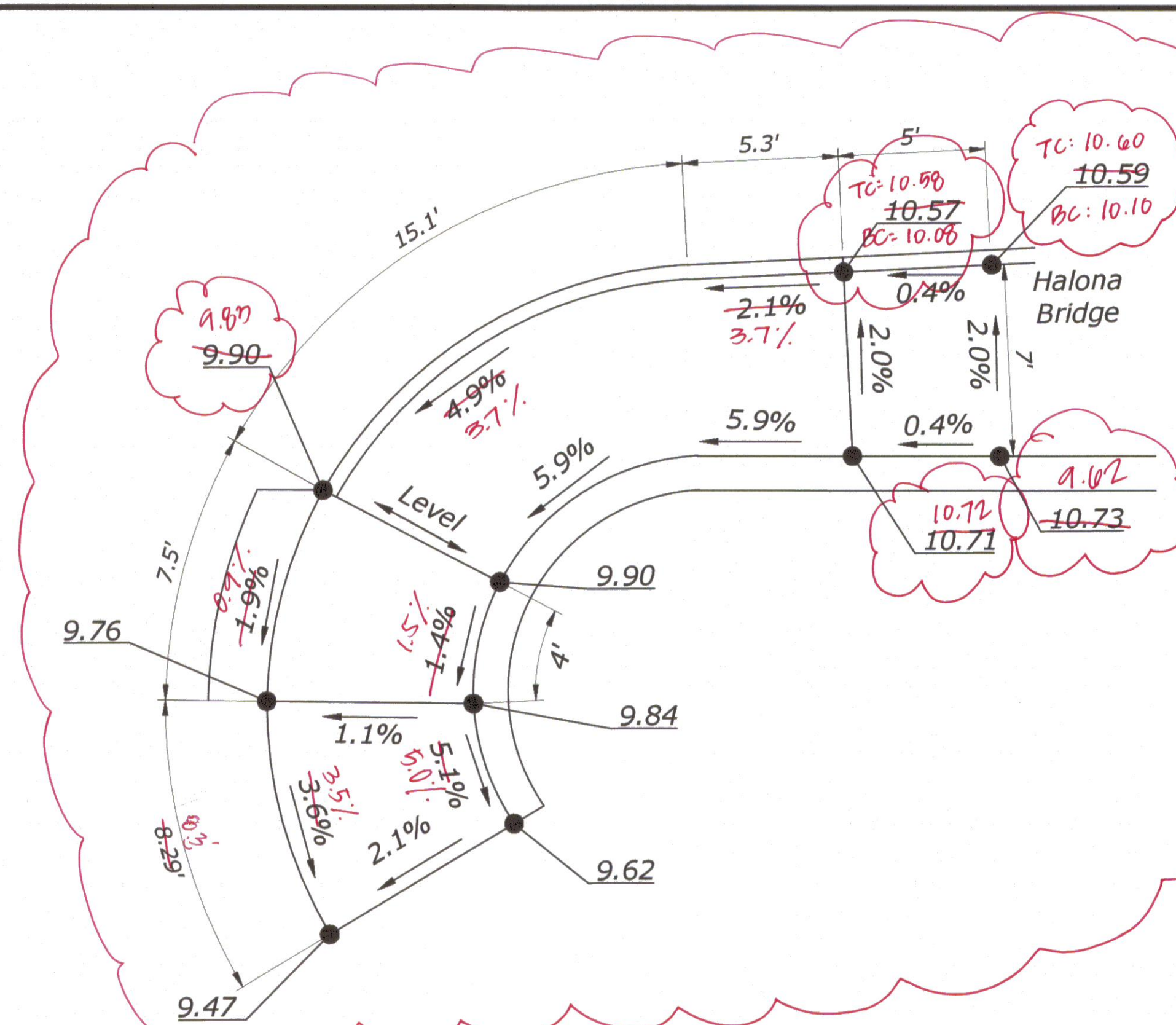
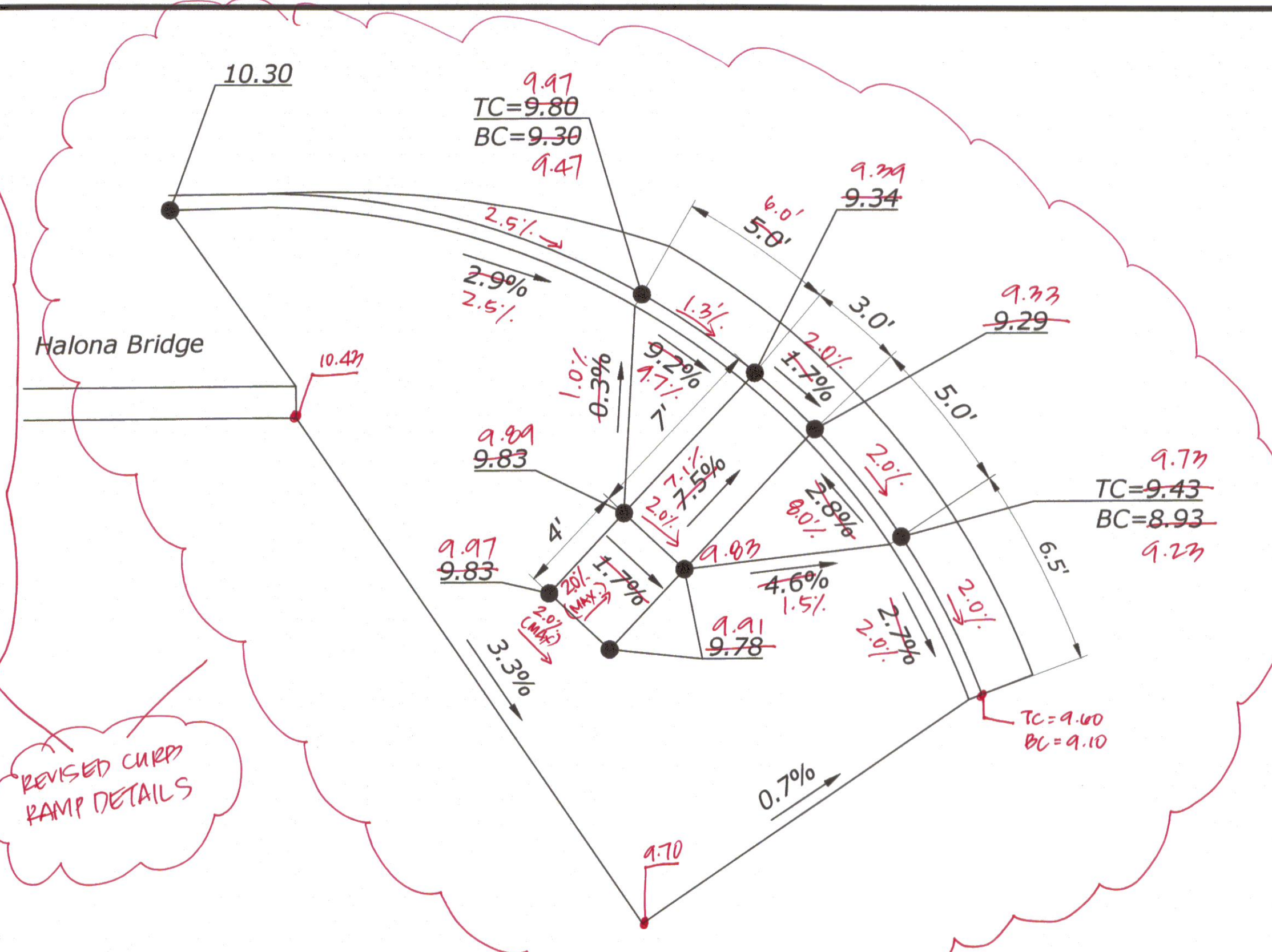


STATE	PROJECT	SHEET NO.
HI	HI STP H1(1)	T10

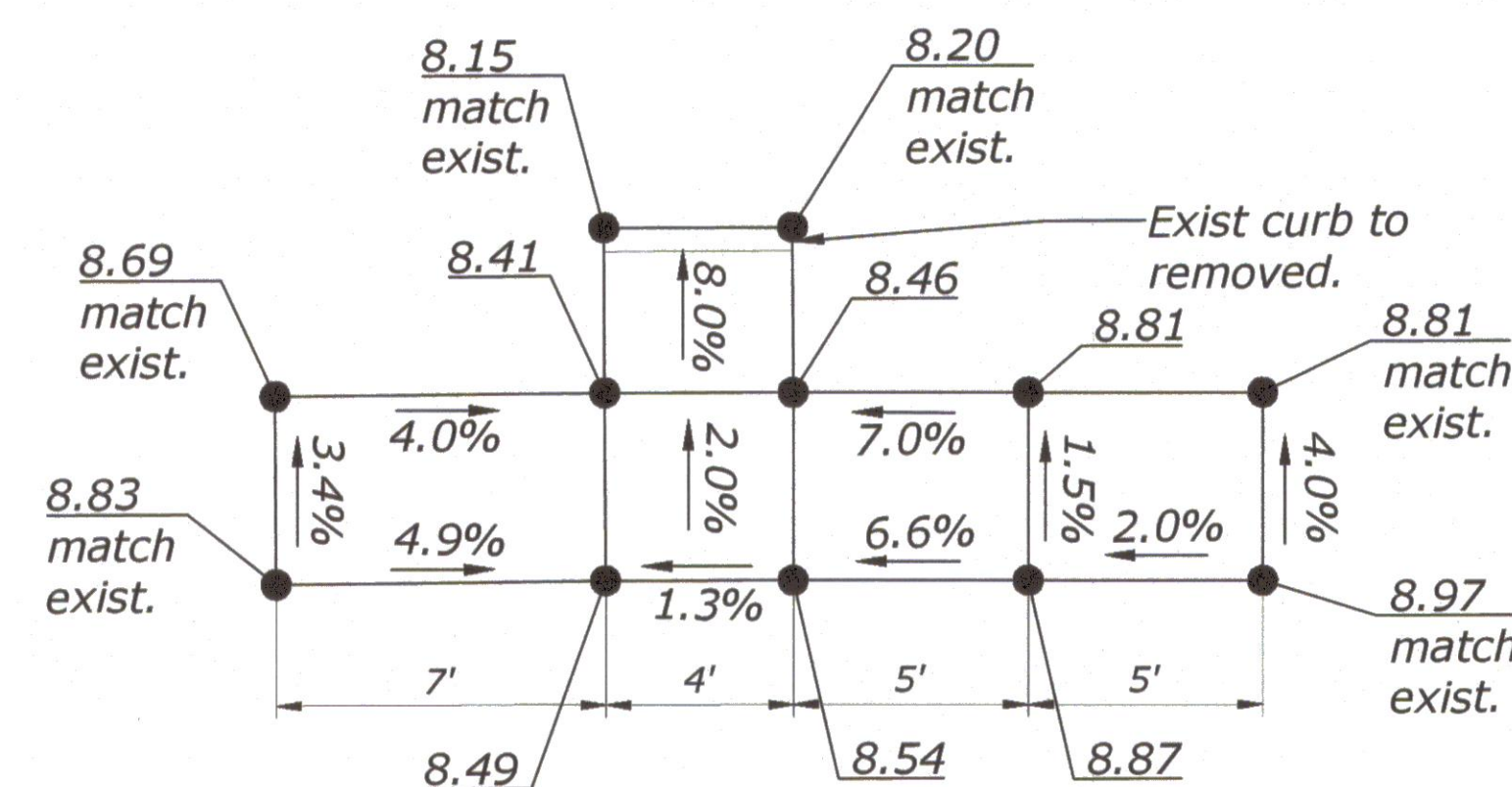


PARALLEL CURB RAMP - KOKEA STREET
SCALE: 1"=2'

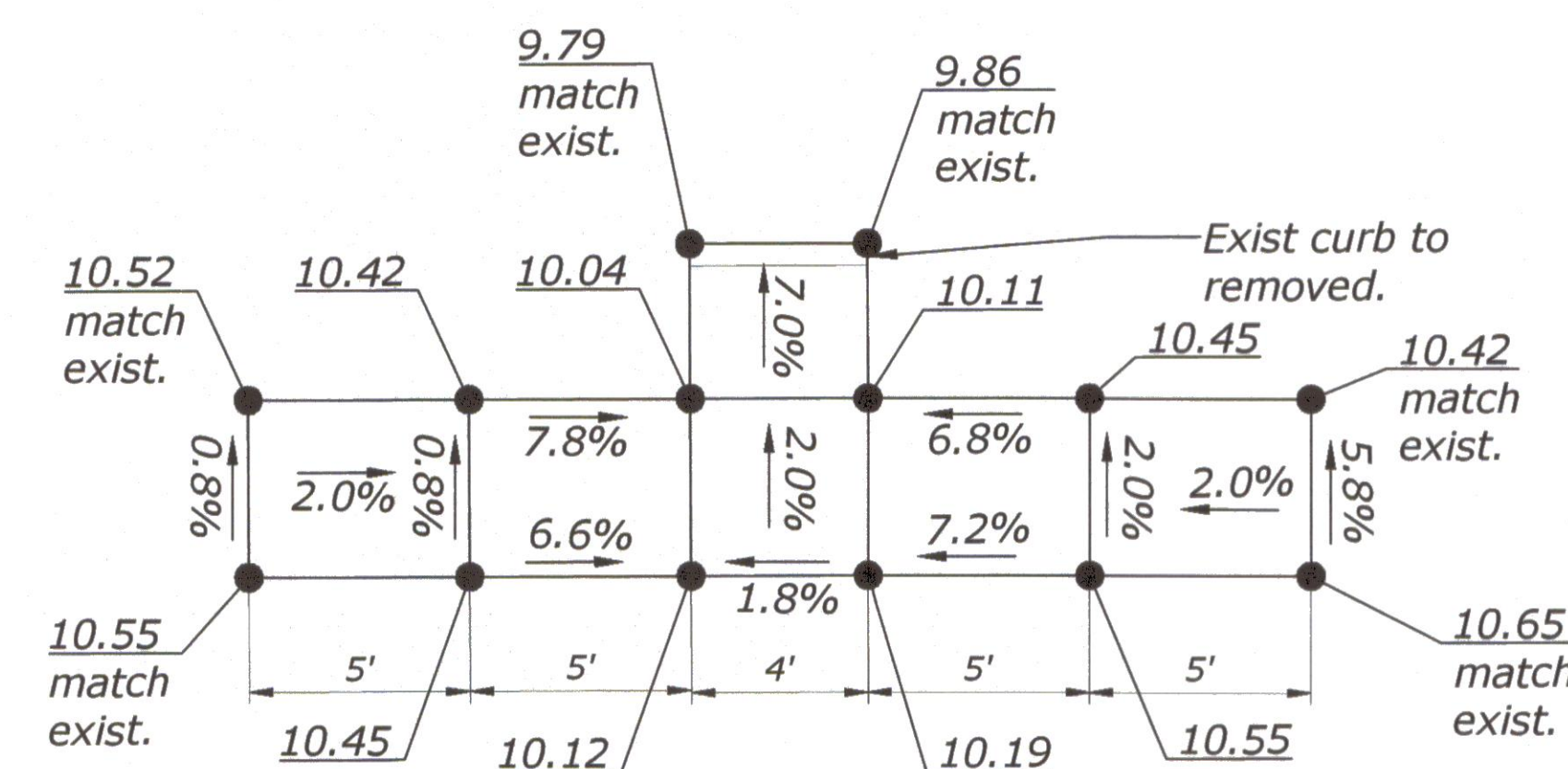


CURB RAMP - KOHOU STREET
SCALE: 1"=2'

- NOTES:**
1. *The maximum cross slopes of ramps must not exceed 2% in any direction.*
 2. *Use a coarse broom finish running perpendicular to the slope to create a slip resistant surface on concrete ramp surfaces, exclusive of the detectable warning fields.*
 3. *Construct curb ramp perpendicular to the curb. Avoid skewing the ramp face.*
 4. *Construct ramp transitions between walks, gutters, or streets that are flush and free of abrupt vertical changes not to exceed 2.5 inches.*
 5. *Locate drainage inlets and manholes outside of ramp walking surfaces or landings.*



**TEMPORARY PARALLEL CURB RAMP -
STA. 9+87.48 TO 10+08.40
SCALE: 1"=2'**



**TEMPORARY PARALLEL CURB RAMP -
STA. 14+04.50 TO 14+29.31
SCALE: 1"=2'**



EXPIRATION DATE 04/30/2018

Michael H. Oramé

THIS WORK WAS PREPARED BY ME OR
UNDER MY SUPERVISION

U.S. DEPARTMENT OF TRANSPORTATION
FEDERAL HIGHWAY ADMINISTRATION
CENTRAL FEDERAL LANDS HIGHWAY DIVISION

U.S. CUSTOMARY SPECIAL

WHEELCHAIR RAMP DETAILS

SPECIAL
615-A

4:01:10 PM c:\pw_workdir\den001\csnyder1\d0165066\HA_BOR_Master.dwg

9/23/2016