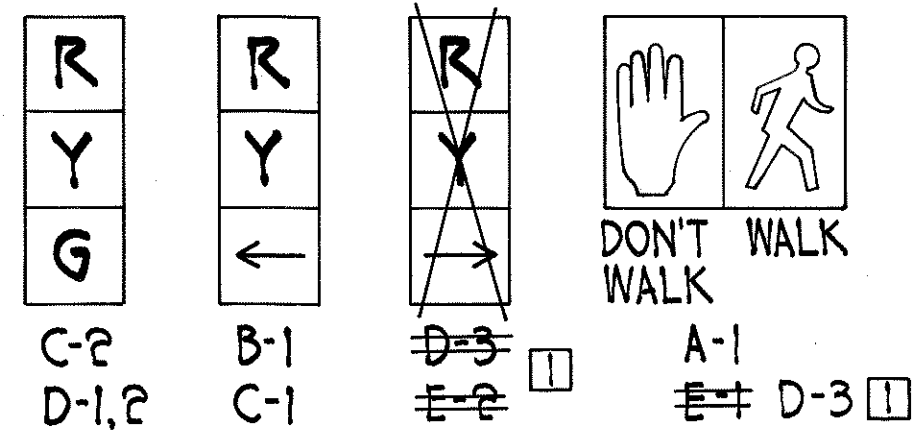


PHASE DIAGRAM



SIGNAL INDICATIONS

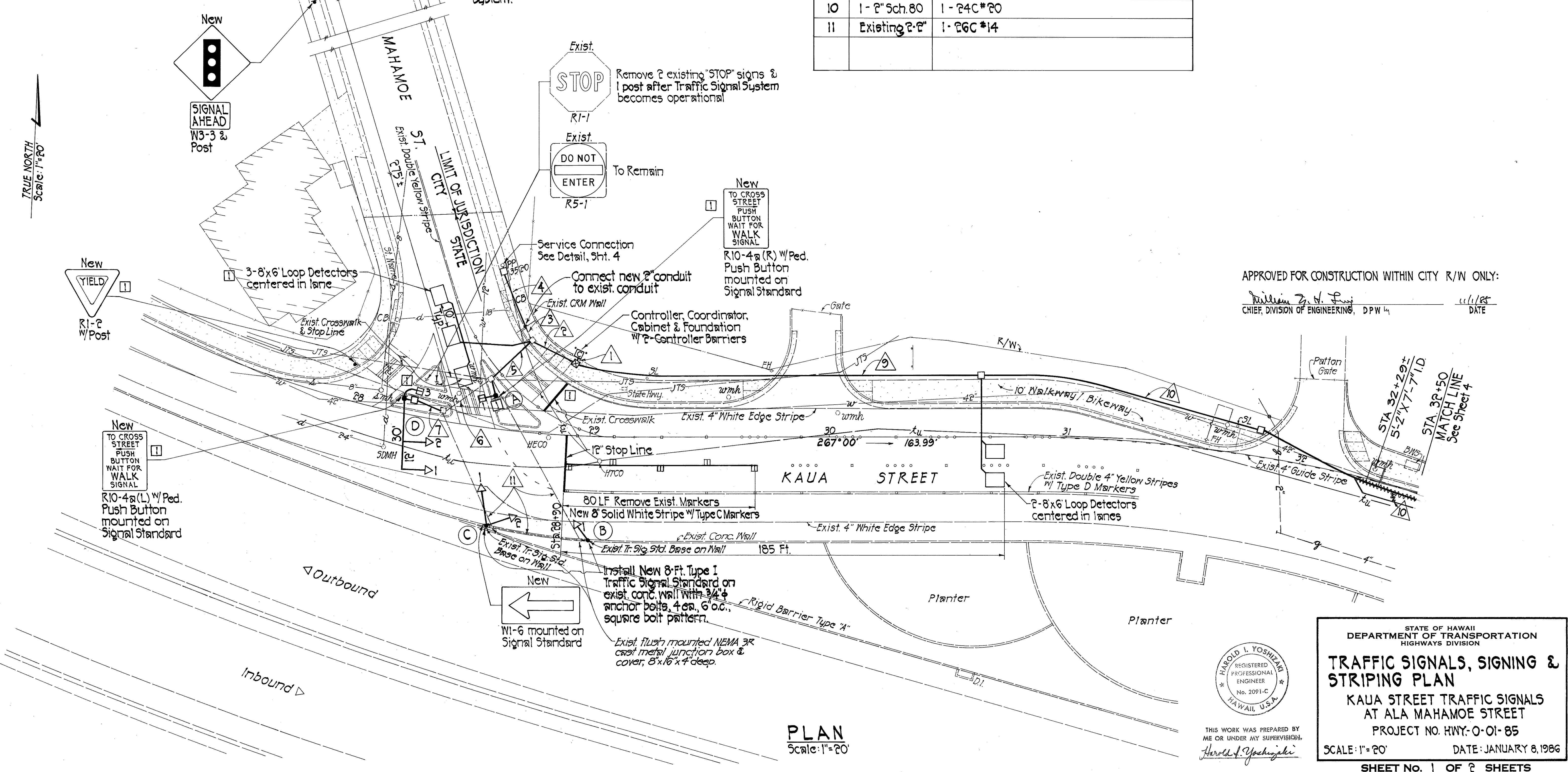
NOTES:

- The Master Controller, Controller, Coordination Units & Auxiliary Support Equipment shall be provided by the same mfr. and:
  - compatible with the exist. controller at Kaula St. & Pt. Shafter Rd. intersection;
  - or, the Contractor may elect to interface the new & existing traffic control equipment;
  - or, replace the exist. equipment with new.
 No additional payment for interfacing and/or replacing existing equipment shall be made separately & shall be incidental to Proposal Item Nos 623.2001 & 623.2002.
- The Contractor & traffic control equipment supplier shall examine the exist. traffic control equipment at Kaula St. & Pt. Shafter Rd. intersection to determine the exact nature of work, quantities of materials and/or equipment required to provide a complete operating interconnected & coordinated traffic signal system.

CONDUIT & CABLE SCHEDULE

△	CONDUIT	CABLE	
1	5 - 2" Sch. 80	2 - 26C #14, 1-3C #6, 3-2C #14, 1-24C #20	□
2	4 - 2" Sch. 80	2 - 26C #14, 1-3C #6, 2-2C #14	□
3	Existing 1-2"	1-3C #6	
4	1-2" Sch. 80	1-3C #6	
5	Exist. 1-2"; 2-2" Sch. 80	2 - 26C #14, 1-2C #14	□
6	Existing 2-2"	1 - 26C #14, 1-2C #14	□
7	3-2" Sch. 80	2 - 26C #14, 1-2C #14	□
8	3-2" Sch. 80	2 - 26C #14, 2-2C #14	□
9	2-2" Sch. 80	1 - 24C #20, 1-2C #14	
10	1-2" Sch. 80	1 - 24C #20	
11	Existing 2-2"	1 - 26C #14	

FED. ROAD DIST. NO.	STATE	PROJ. NO.	FISCAL YEAR	SHEET NO.	TOTAL SHEETS
HAWAII	HAW.	HWY-0-01-85	1986	3	14
DATE: 3/24/86					
REVISION					
□ Revision No. 1					
Removed Signals (E) & 1 set three Loop Detectors; moved (A) to 1st; changed Sign R3-5 to R1-2 w/ Post.					



APPROVED FOR CONSTRUCTION WITHIN CITY R/W ONLY:  
 [Signature] 4/1/85  
 CHIEF, DIVISION OF ENGINEERING, DPW  
 DATE

DATE	_____
SURVEY PLOTTED BY	_____
DRAWN BY	_____
TRACED BY	_____
QUANTITIES BY	_____
CHECKED BY	_____
NOTE BOOK	_____
No.	_____

PLAN  
Scale: 1"=20'

HAROLD I. YOSHIZAKI  
 REGISTERED PROFESSIONAL ENGINEER  
 No. 2091-C  
 HAWAII, U.S.A.  
 THIS WORK WAS PREPARED BY ME OR UNDER MY SUPERVISION.  
 Harold I. Yoshizaki

STATE OF HAWAII  
 DEPARTMENT OF TRANSPORTATION  
 HIGHWAYS DIVISION

**TRAFFIC SIGNALS, SIGNING & STRIPING PLAN**

KAUA STREET TRAFFIC SIGNALS  
 AT ALA MAHAMOE STREET

PROJECT NO. HWY-0-01-85  
 SCALE: 1"=20' DATE: JANUARY 8, 1986

SHEET No. 1 OF 2 SHEETS